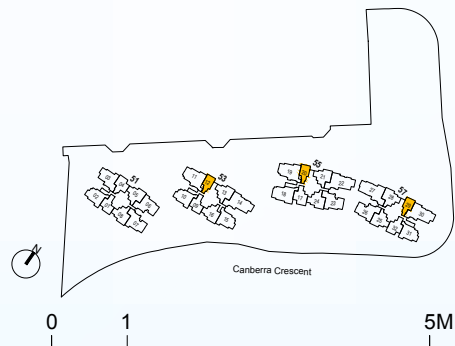
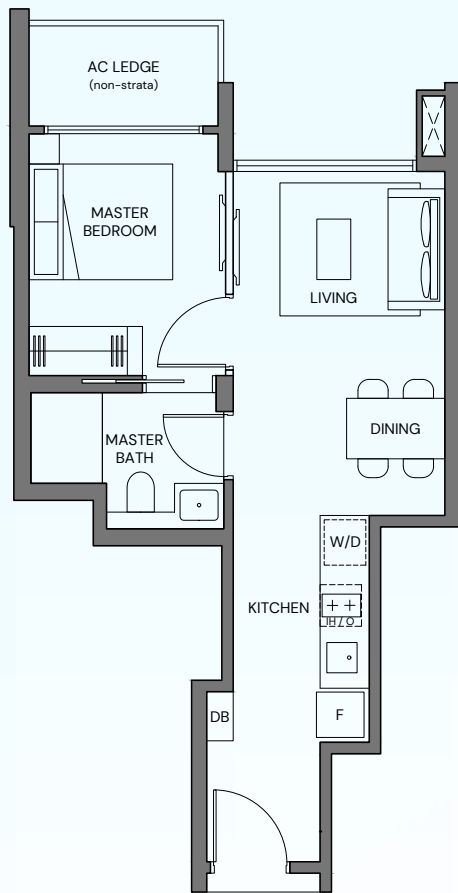


1-Bedroom

TYPE 1BR
38 sqm / 409 sqft

BLK 53 #01-12
BLK 55 #01-20
BLK 57 #01-29*
*Mirrored unit



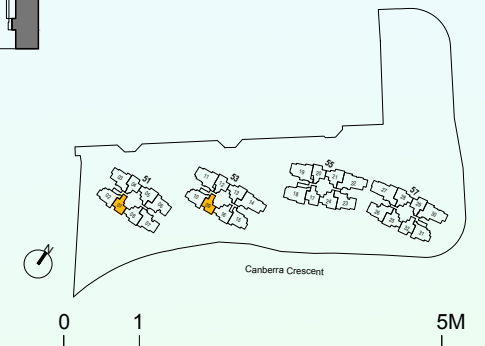
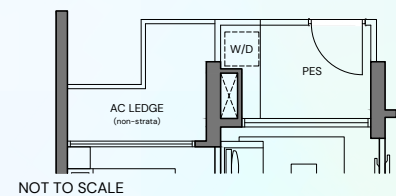
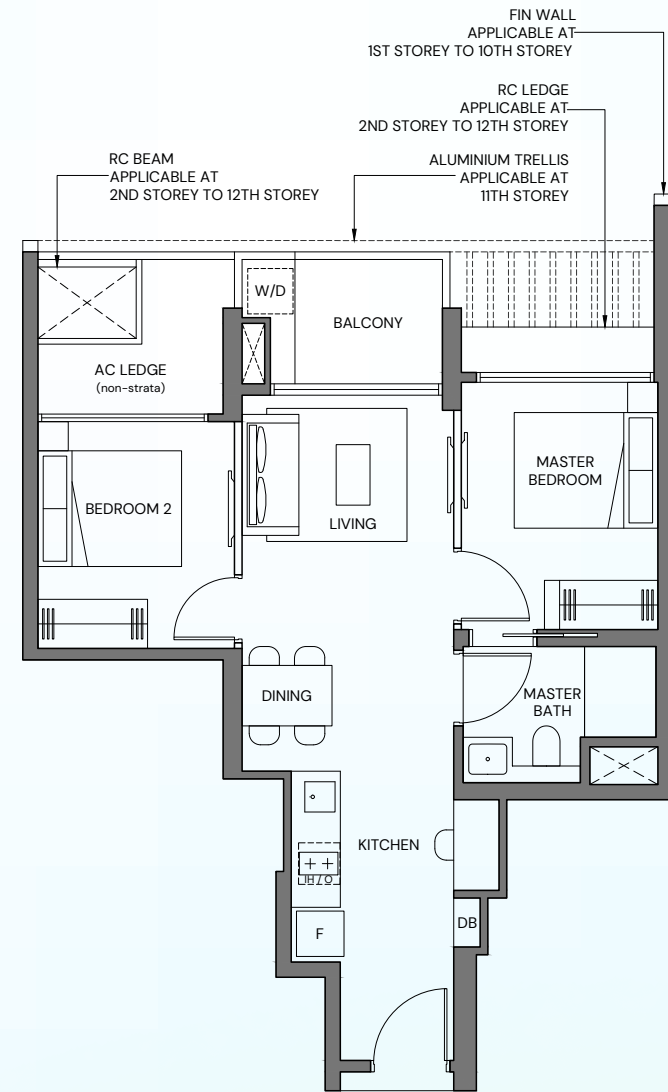
2-Bedroom Compact

TYPE 2BR-C (PES)
53 sqm / 570 sqft

BLK 53 #01-09

TYPE 2BR-C
53 sqm / 570 sqft

BLK 51 #02-01 - #12-01
BLK 53 #02-09 - #12-09



2-Bedroom Premium

TYPE 2BR-Pa
62 sqm / 667 sqft

BLK 51 #02-04 - #12-04
BLK 53 #02-12 - #12-12
BLK 55 #02-20 - #02-20
BLK 57 #02-29* - #12-29*
*Mirrored unit



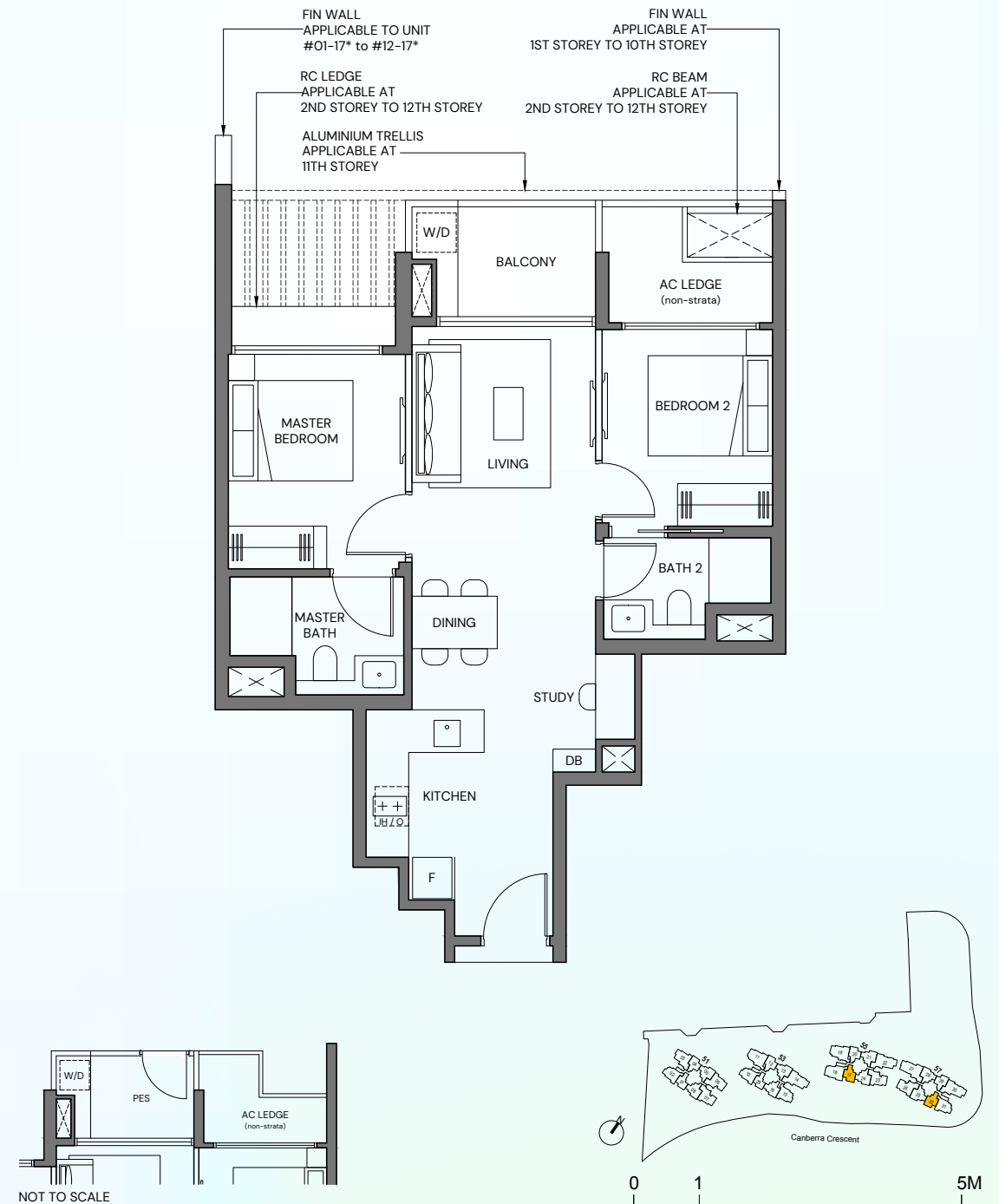
2-Bedroom Premium

TYPE 2BR-Pb (PES)
62 sqm / 667 sqft

BLK 55 #01-17*
BLK 57 #01-32

TYPE 2BR-Pb
62 sqm / 667 sqft

BLK 55 #02-17* - #12-17*
BLK 57 #02-32 - #12-32
*Mirrored unit



3-Bedroom Compact

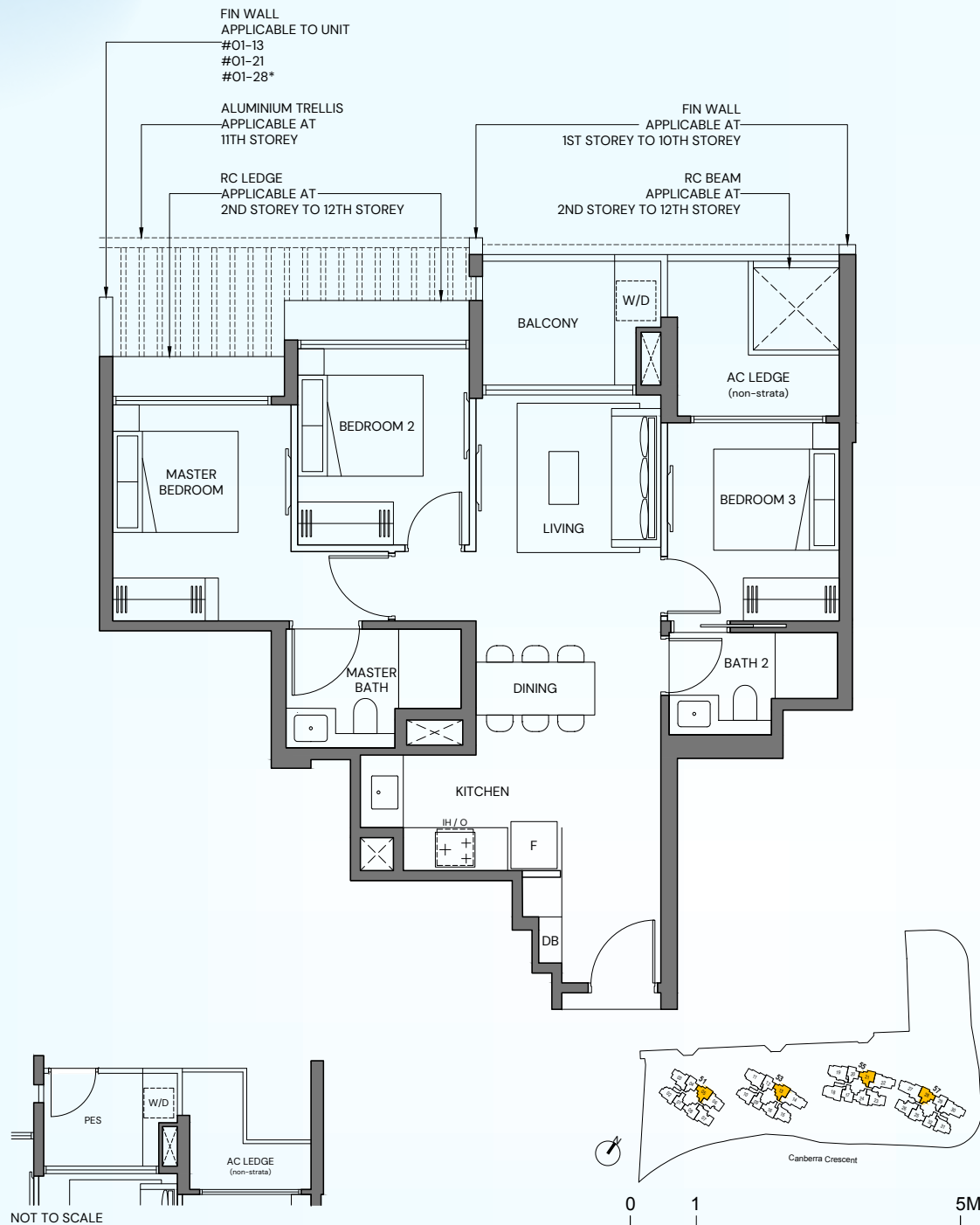
TYPE 3BR-Ca (PES)
74 sqm / 797 sqft

BLK 53 #01-13
BLK 55 #01-21
BLK 57 #01-28*

TYPE 3BR-Ca
74 sqm / 797 sqft

BLK 51 #02-05 - #11-05
BLK 53 #02-13 - #11-13
BLK 55 #02-21 - #11-21
BLK 57 #02-28* - #11-28*

*Mirrored unit



3-Bedroom Compact

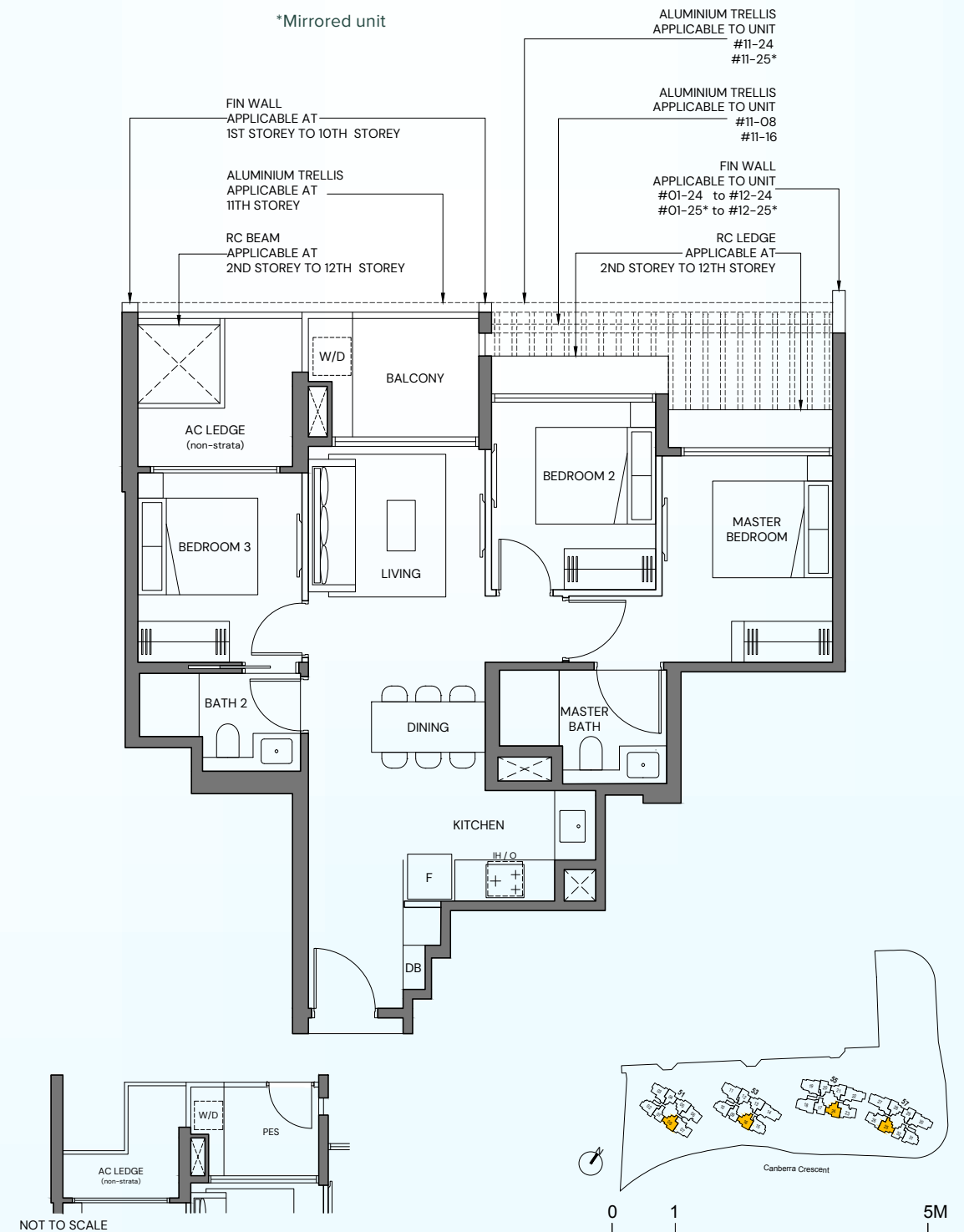
TYPE 3BR-Ca (PES)
74 sqm / 797 sqft

BLK 53 #01-16
BLK 55 #01-24
BLK 57 #01-25*

TYPE 3BR-Ca
74 sqm / 797 sqft

BLK 51 #02-08 - #12-08
BLK 53 #02-16 - #12-16
BLK 55 #02-24 - #12-24
BLK 57 #02-25* - #12-25*

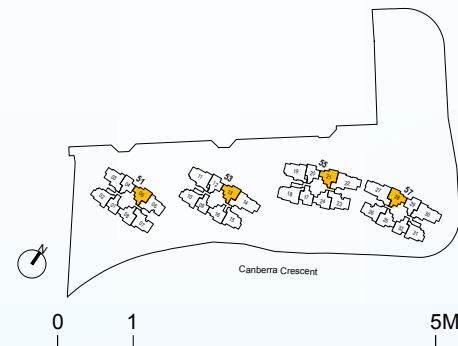
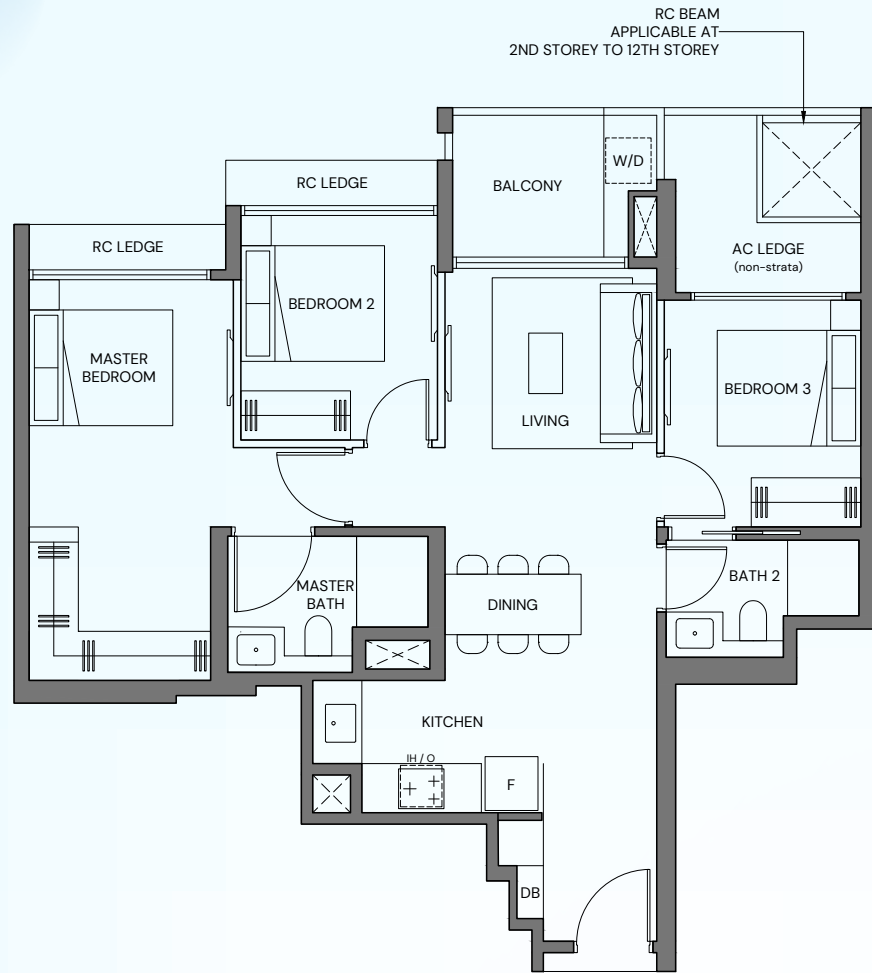
*Mirrored unit



3-Bedroom Compact

TYPE 3BR-Ca (P)
81 sqm / 872 sqft

BLK 51 #12-05
BLK 53 #12-13
BLK 55 #12-21
BLK 57 #12-28*
*Mirrored unit



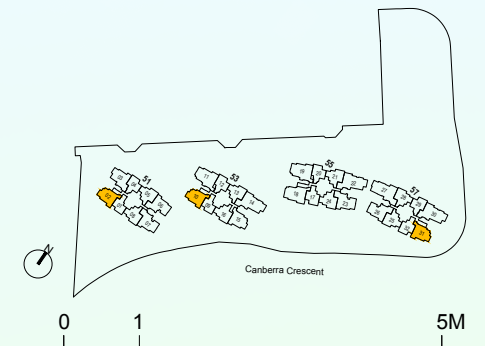
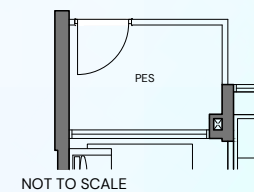
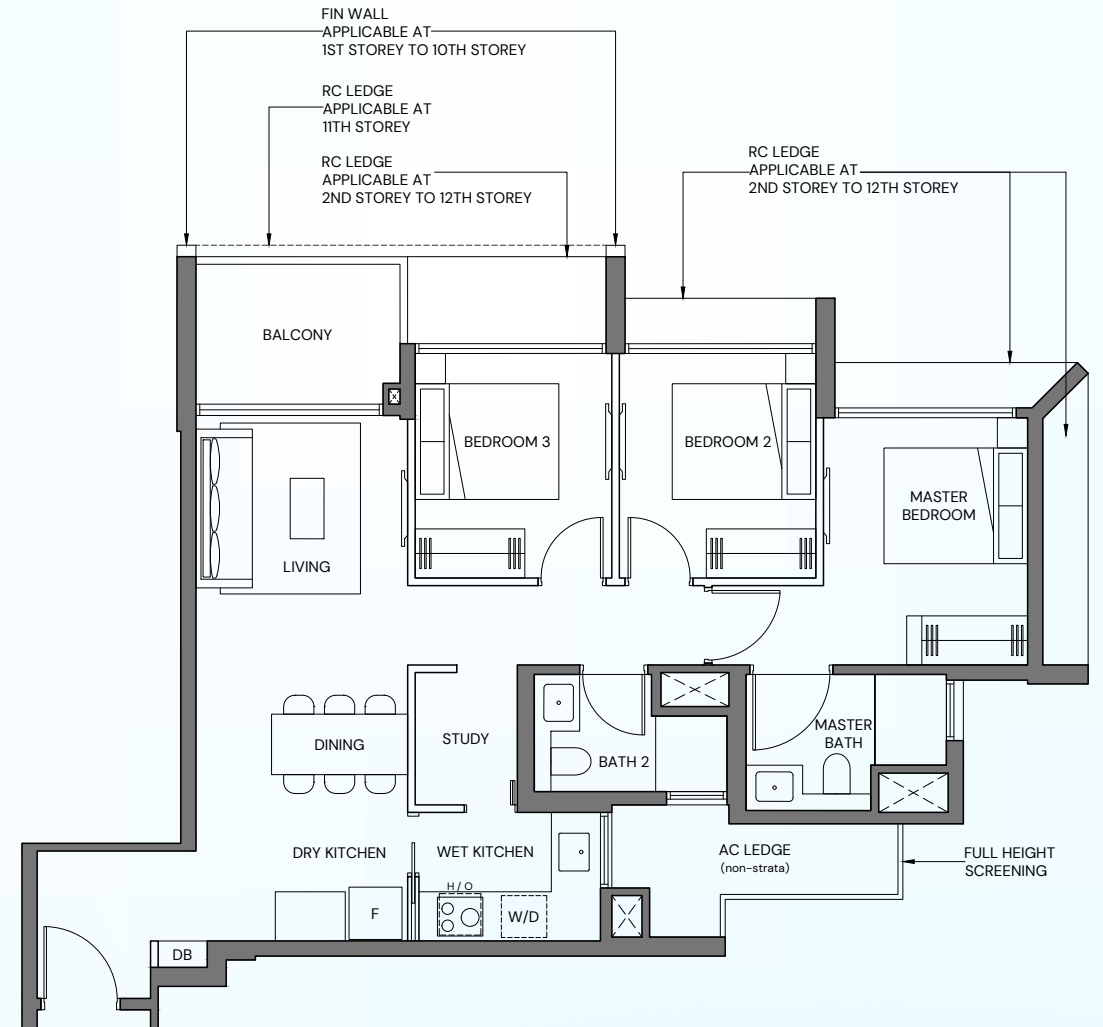
3-Bedroom Compact

TYPE 3BR-Cb (PES)
82 sqm / 883 sqft

BLK 53 #01-10
BLK 57 #01-31*

TYPE 3BR-Cb
82 sqm / 883 sqft

BLK 51 #02-02 - #12-02
BLK 53 #02-10 - #12-10
BLK 57 #02-31* - #12-31*
*Mirrored unit



3-Bedroom Compact

TYPE 3BR-Cc (PES)
81 sqm / 872 sqft

BLK 53 #01-15

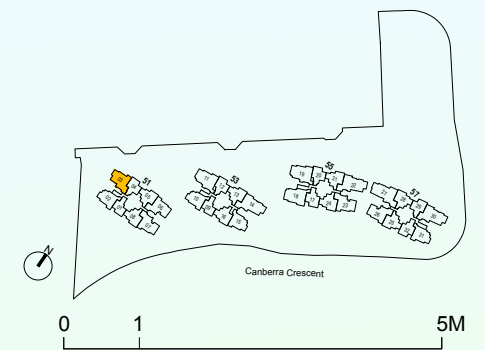
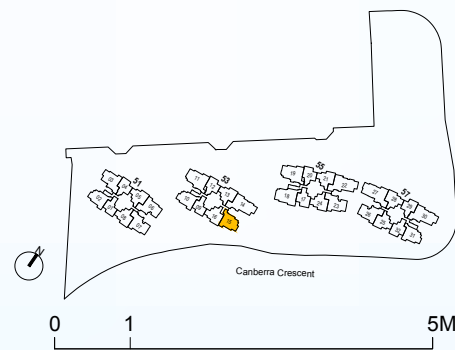
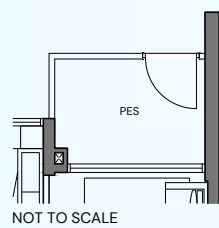
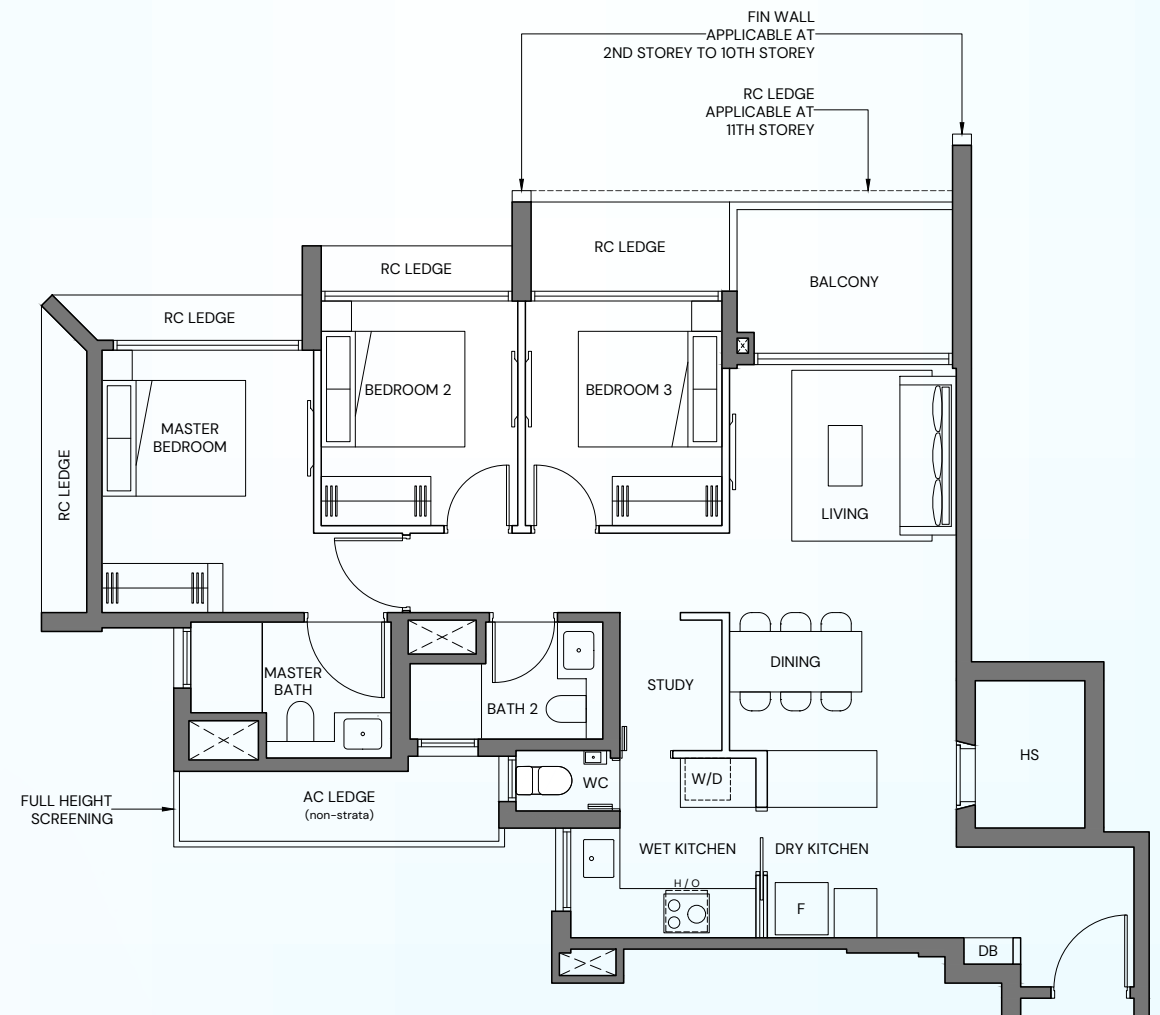
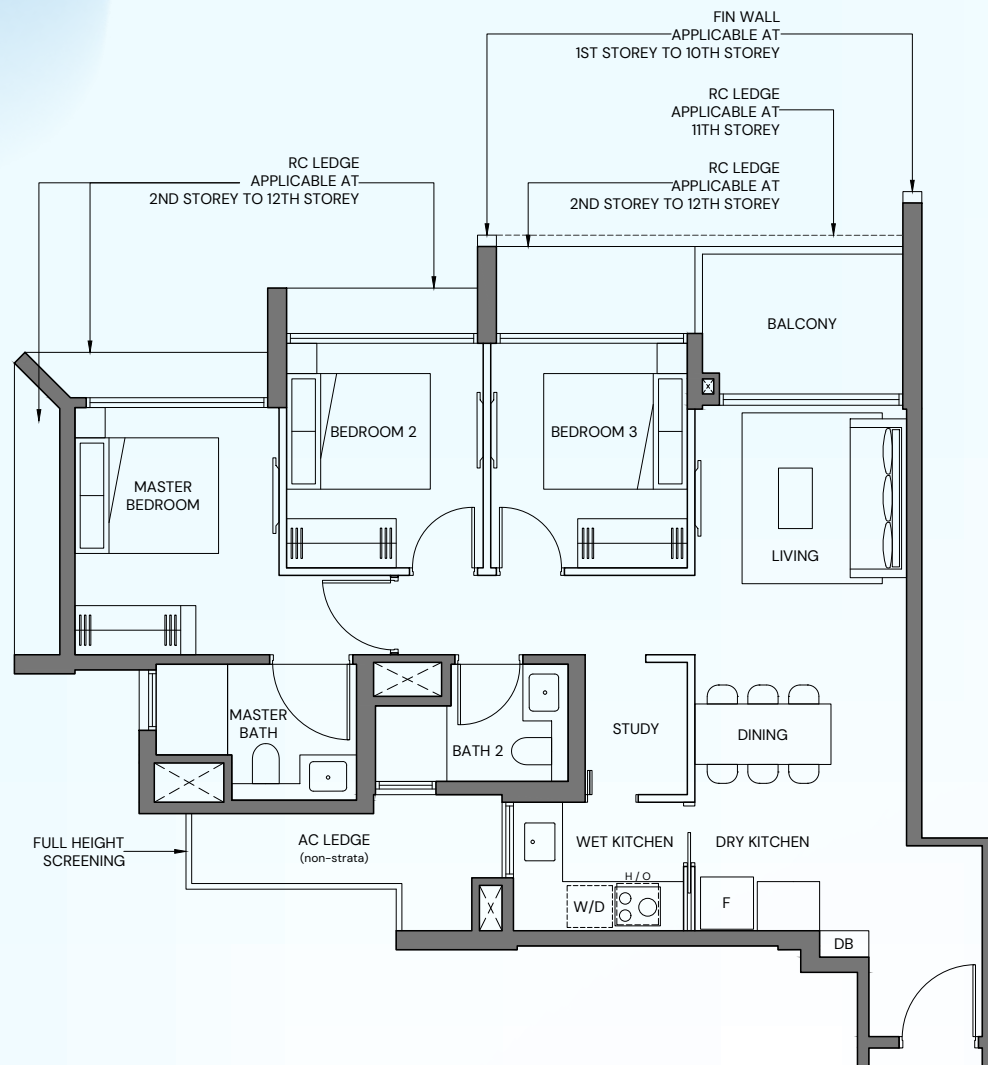
TYPE 3BR-Cc
81 sqm / 872 sqft

BLK 53 #02-15 - #12-15

3-Bedroom Premium

TYPE 3BR-Sa
92 sqm / 990 sqft

BLK 51 #02-03 - #12-03



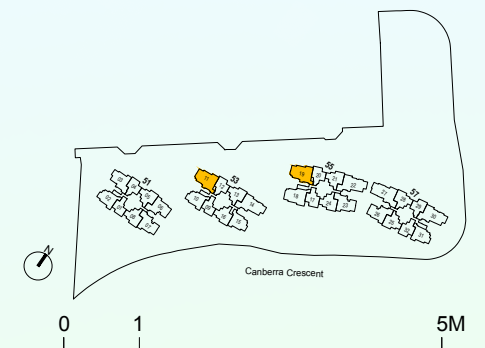
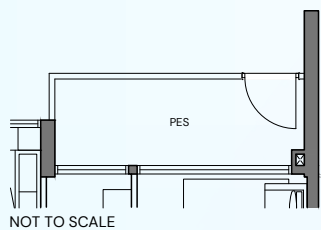
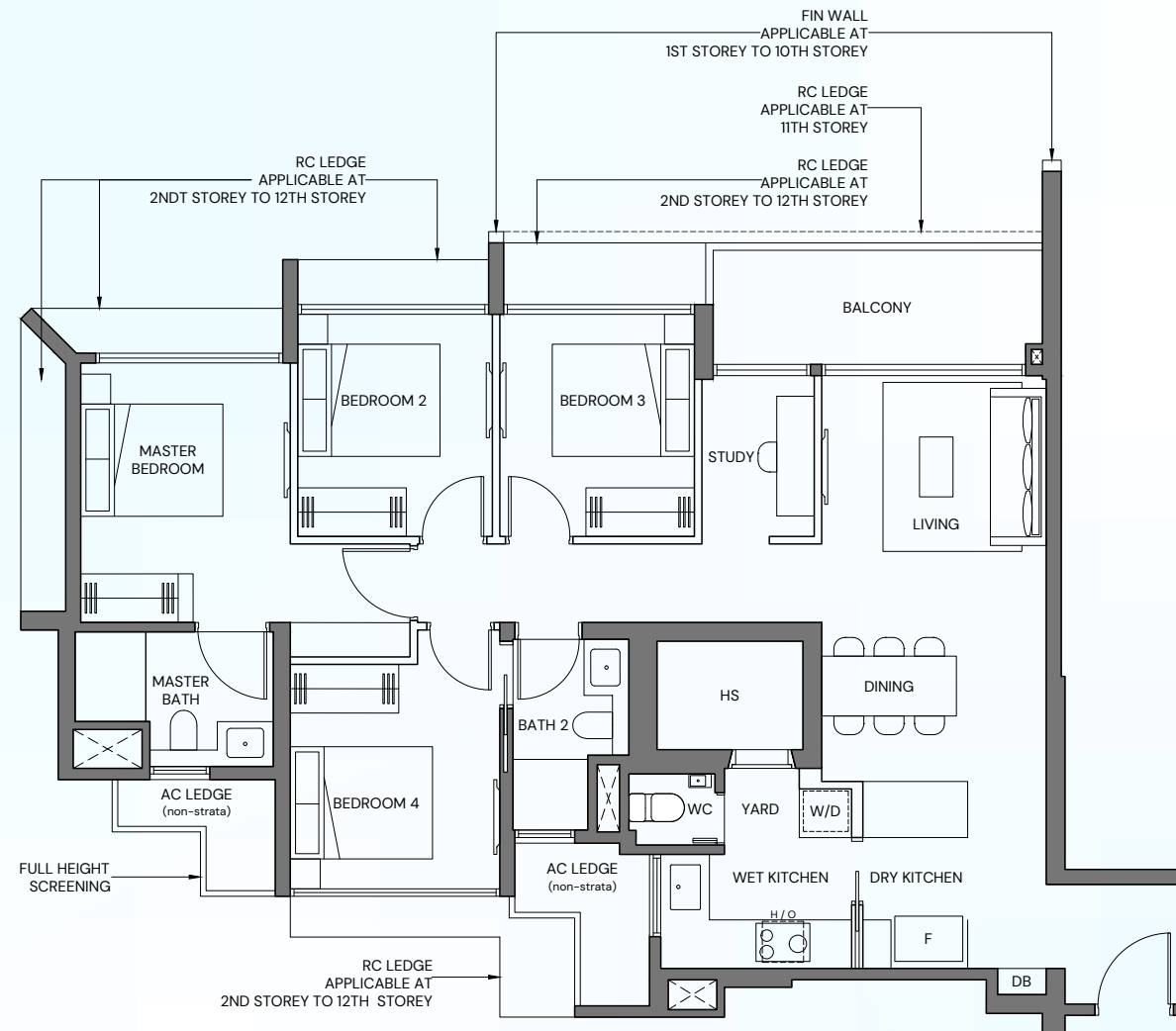
4-Bedroom Compact

TYPE 4BR-Ca (PES)
108 sqm / 1163 sqft

BLK 53 #01-11
BLK 55 #01-19

TYPE 4BR-Ca
108 sqm / 1163 sqft

BLK 53 #02-11 - #12-11
BLK 55 #02-19 - #12-19



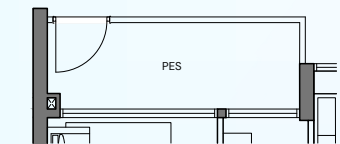
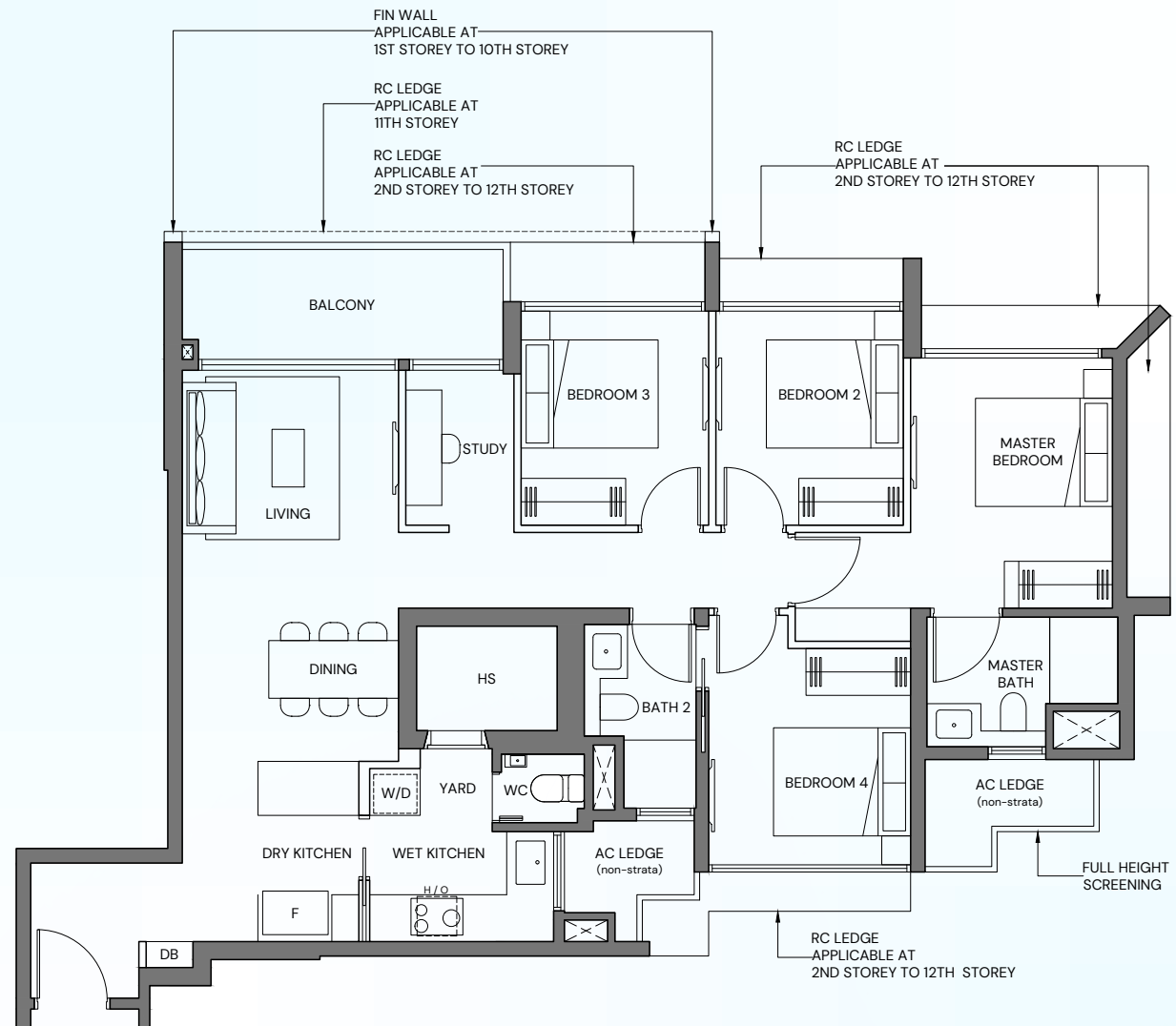
4-Bedroom Compact

TYPE 4BR-Cb (PES)
109 sqm / 1173 sqft

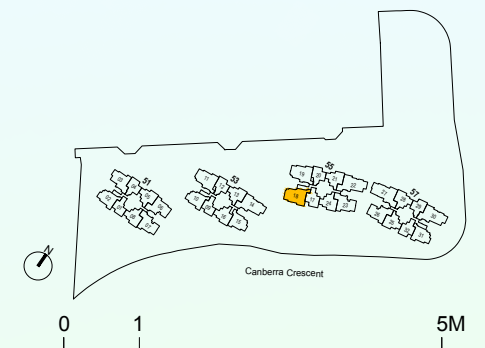
BLK 55 #01-18

TYPE 4BR-Cb
109 sqm / 1173 sqft

BLK 55 #02-18 - #12-18



NOT TO SCALE



Area includes private enclosed space (PES) or balcony, where applicable. all AC ledges and RC ledges (non-load bearing) are excluded from strata area. The plans are subjected to change as may be required by relevant authorities. All areas and measurements stated herein as approximate and subject to final survey.

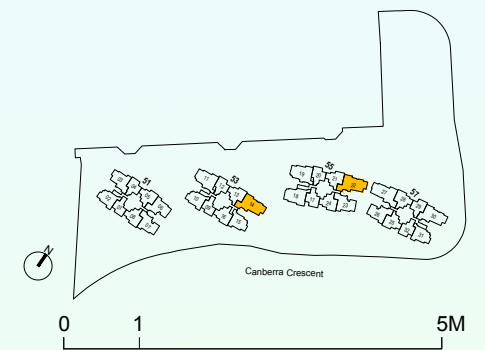
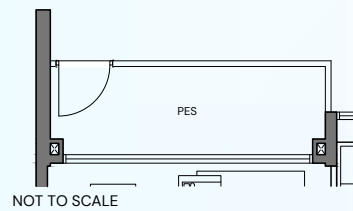
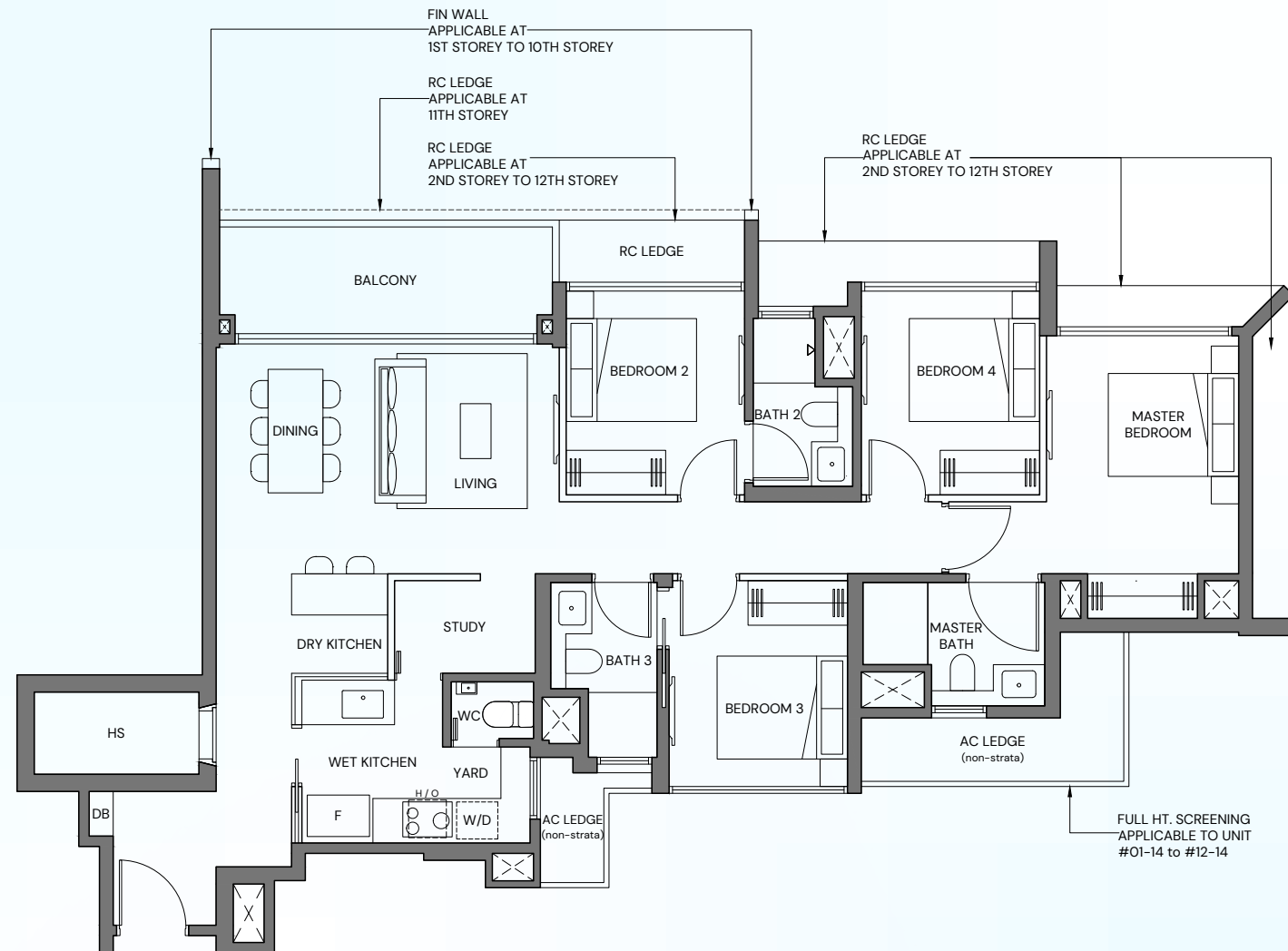
4-Bedroom Standard

TYPE 4BR-Sb (PES)
113 sqm / 1216 sqft

BLK 53 #01-14
BLK 55 #01-22

TYPE 4BR-Sb
113 sqm / 1216 sqft

BLK 53 #02-14 - #12-14
BLK 55 #02-22 - #12-22



4-Bedroom Premium

TYPE 4BR-P (PES)
123 sqm / 1324 sqft

BLK 57 #01-27

TYPE 4BR-P
123 sqm / 1324 sqft

BLK 57 #02-27 - #12-27

