



**ET GOLD**

@MACPHERSON





TOAST TO THE MANY GOLDEN  
OPPORTUNITIES AHEAD

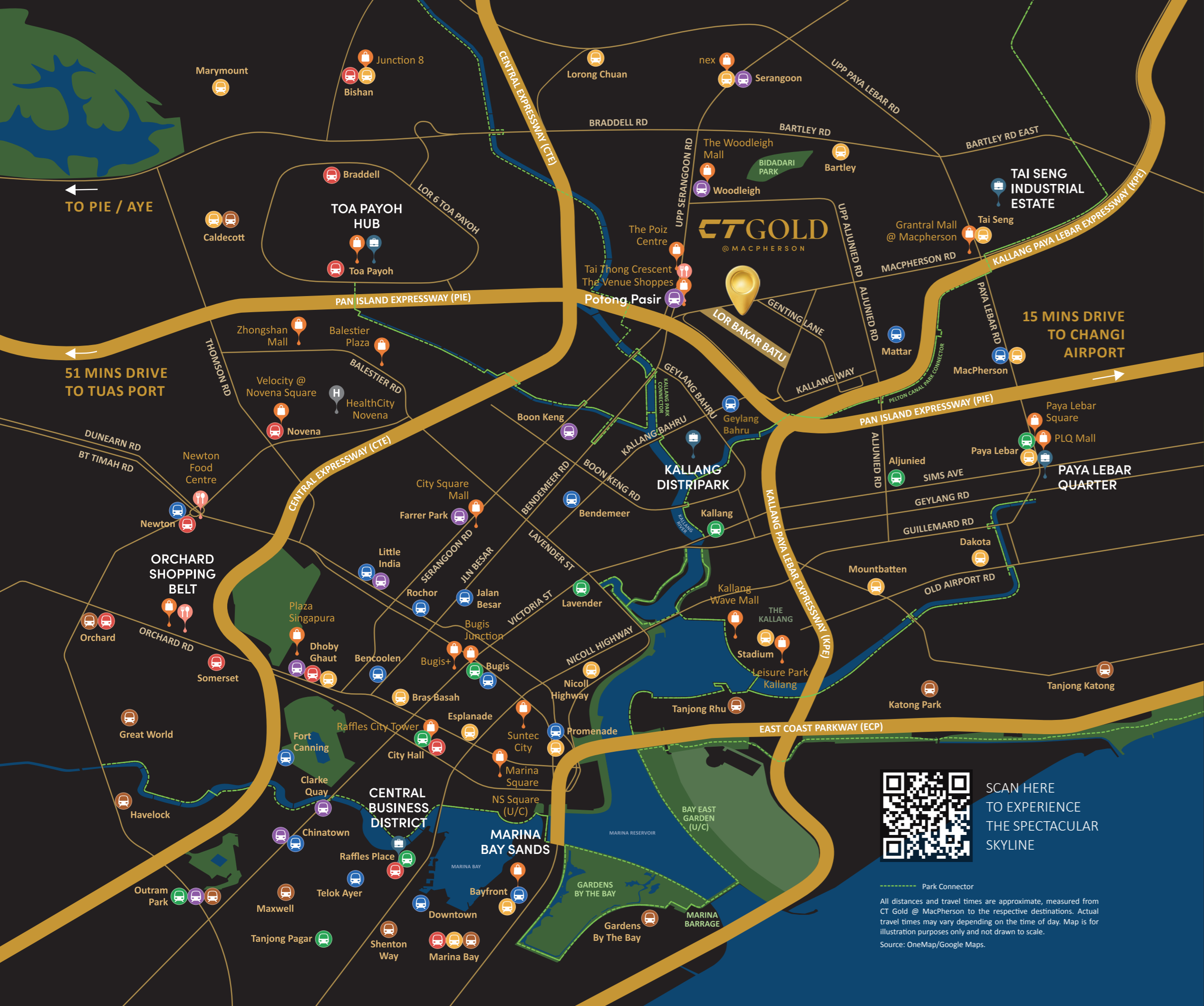
共庆无限黄金机遇



迈向城市黄金之门

YOUR GOLDEN GATEWAY IN THE HEART OF THE CITY





SCAN HERE TO EXPERIENCE THE SPECTACULAR SKYLINE

--- Park Connector  
 All distances and travel times are approximate, measured from CT Gold @ MacPherson to the respective destinations. Actual travel times may vary depending on the time of day. Map is for illustration purposes only and not drawn to scale.  
 Source: OneMap/Google Maps.



## 绿 NATURE

- KALLANG PARK CONNECTOR  
7 mins cycle
- BIDADARI PARK  
5 mins by car / 14 mins cycle



## 通 TRAVEL

- BUS STOP  
1 min walk
- POTONG PASIR MRT  
8 mins walk
- CTE / PIE  
4 mins by car
- NICOLL HIGHWAY / AYE  
12 mins by car
- CHANGI AIRPORT  
15 mins by car



## 城 AFTER 5

- ORCHARD SHOPPING BELT  
9 mins by car
- MARINA BAY SANDS  
12 mins by car



## 商 BUSINESS

- KALLANG DISTRI PARK  
3 mins by car
- PAYA LEBAR CENTRAL  
6 mins by car
- TAMPINES INDUSTRIAL PARK A  
15 mins by car
- CHANGI BUSINESS PARK  
19 mins by car



## 吃 LOCAL BITES

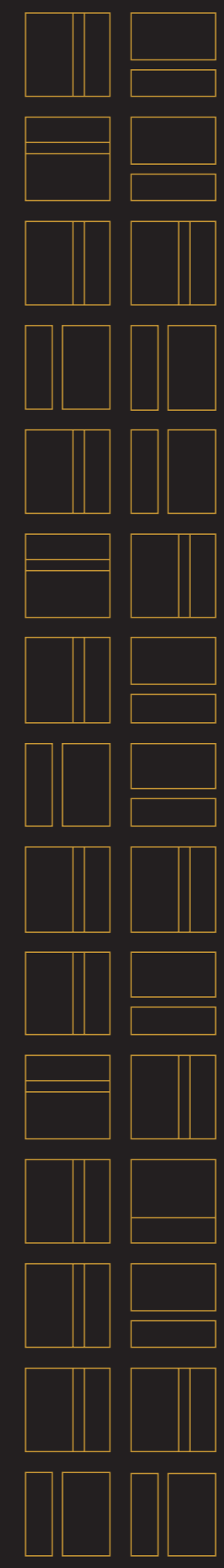
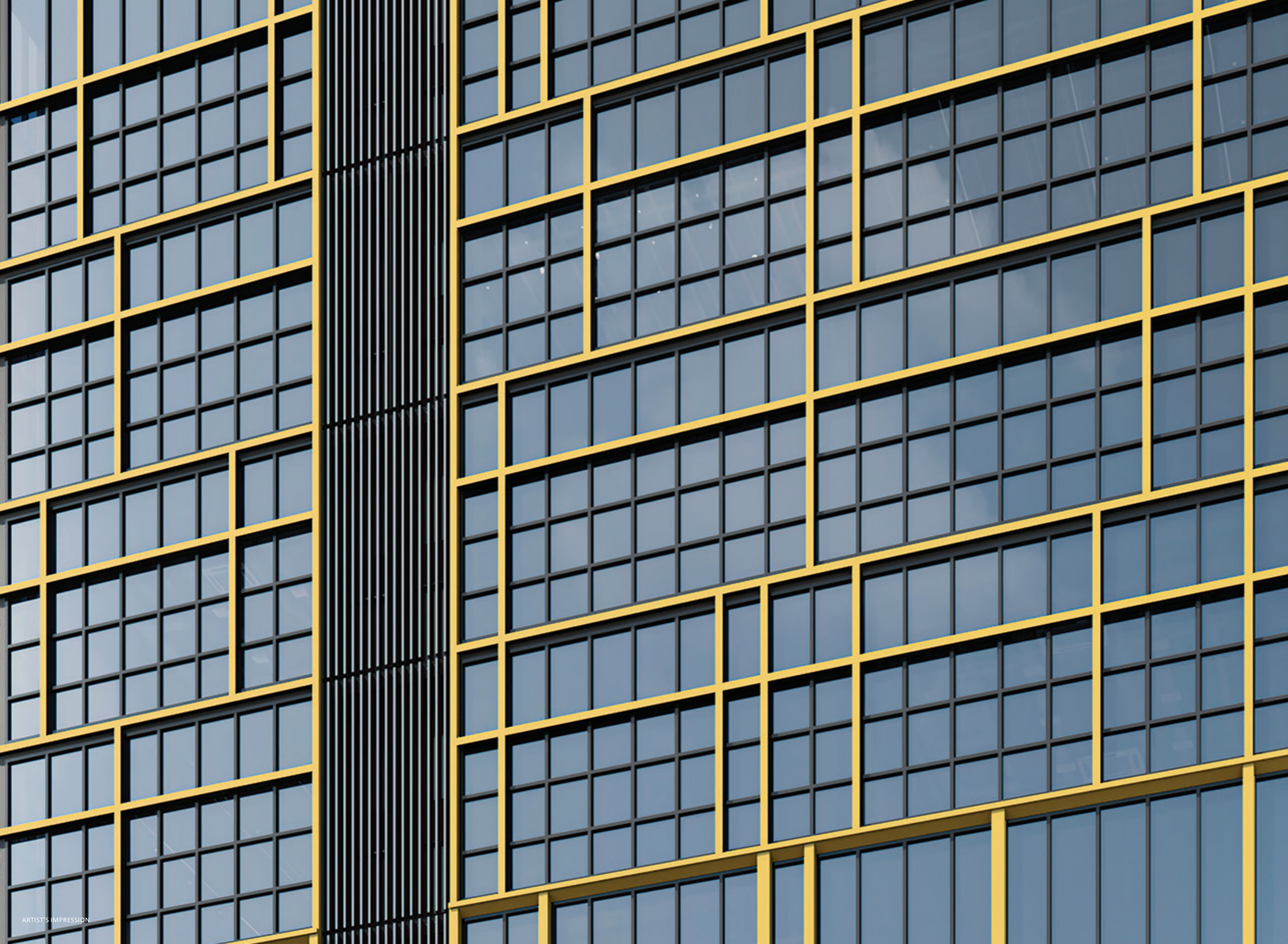
- BENDEMEER HAWKER CENTRE  
3 mins by car
- MACPHERSON FOOD CENTRE  
6 mins by car
- WHAMPOA HAWKER CENTRE  
7 mins by car



## 逛 SHOP / F&B

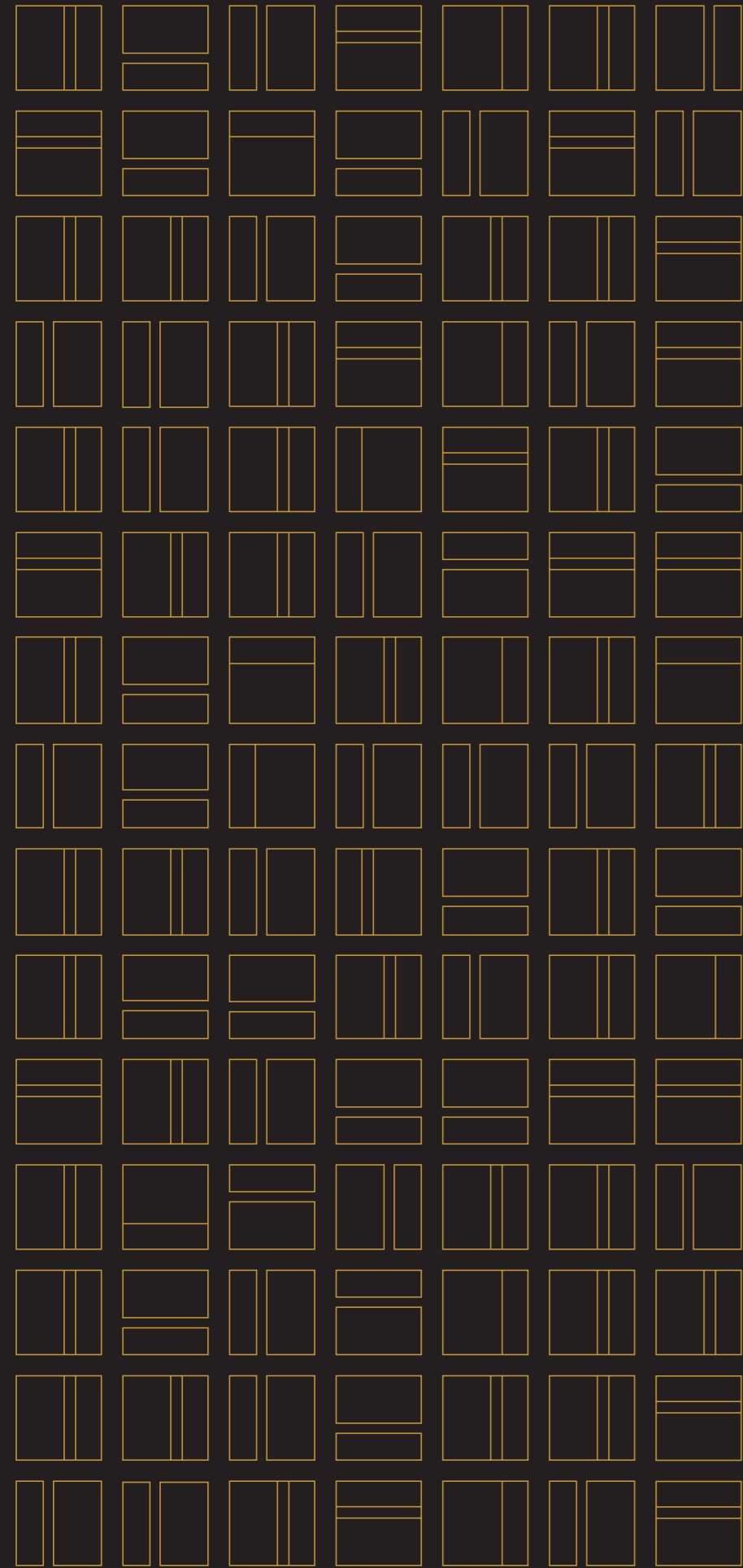
- TAI THONG CRESCENT THE VENUE SHOPPES  
6 mins walk
- THE POIZ CENTRE  
14 mins walk
- GRANTRAL MALL THE WOODLEIGH MALL  
4 mins by car
- NEX  
7 mins by car





TIMELESS • VALUABLE • VICTORIOUS

永恒 · 珍贵 · 致胜



RARE FREEHOLD IN SINGAPORE

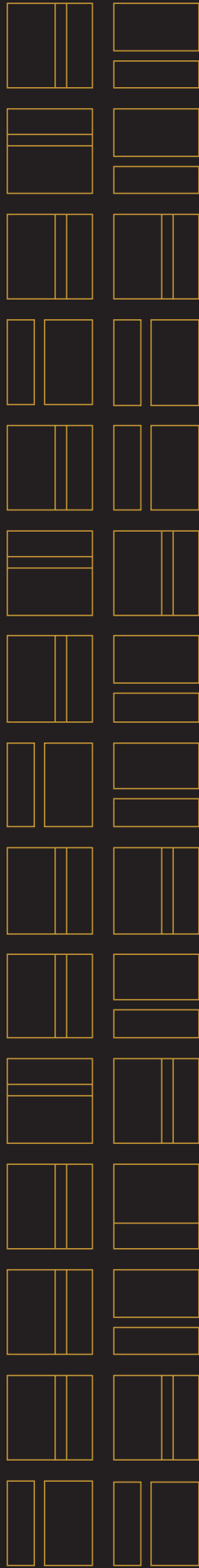
新加坡罕见永久地契





WELCOME TO THE GOLDEN ARRIVAL

金光之下，金辉登临



黄金食刻，迈向未来

YOUR GOLDEN BREAK STARTS HERE



ARTIST'S IMPRESSION

登高望远，尽享金耀

AN ELEVATED VIEW, WRAPPED IN GOLDEN GLOW



## GOLD-CLASS FUNCTIONALITY

市区B1工业楼  
CITY B1 INDUSTRIAL

63个独家宽敞工业单位  
63 EXCLUSIVE SPACIOUS  
INDUSTRIAL UNITS

3个已获永久批准的大型餐厅  
3 LARGE CANTEENS  
WITH PERMANENT APPROVAL

6层CAT-3坡道，可直接装卸货物  
6 LEVELS OF CAT-3 RAMP-UP DRIVEWAY  
FOR DIRECT LOADING / UNLOADING

每个单位配备独立洗手间  
ATTACHED TOILET FOR EVERY UNIT

可组合单元布局  
MODULAR UNIT LAYOUT

公共休憩亭  
COMMUNAL PAVILION

部分单位配备卷帘门入口  
ROLLER SHUTTER ENTRANCES  
FOR SELECTED UNITS

层高宽裕：5.6米至7.35米  
FLOOR-TO-FLOOR HEIGHT FROM  
5.6M TO 7.35M

4个适用于<7.5米刚性货车的  
装卸区  
4 NOS. OF < 7.5M RIGID TRUCK  
LOADING / UNLOADING  
PARKING LOTS

独立客梯及服务电梯大堂  
SEPARATE PASSENGER /  
SERVICE LIFT LOBBIES

金  
装  
级  
功  
能  
配  
置



## SECTIONAL DIAGRAM

8TH STOREY -  
7.000M\*

7TH STOREY -  
5.600M\*

6TH STOREY -  
5.600M\*

5TH STOREY -  
5.600M\*

4TH STOREY -  
7.350M\*      MEZZANINE - 3.675M\*  
4TH STOREY - 3.675M\*

3RD STOREY -  
7.350M\*      MEZZANINE - 3.675M\*  
3RD STOREY - 3.675M\*

2ND STOREY -  
6.300M\*

1ST STOREY -  
7.350M\*

ARTIST'S IMPRESSION

\*FLOOR-TO-FLOOR HEIGHT

GO BEYOND WITH  
GREEN EXCELLENCE

环 保 可 持 续

### END-OF-TRIP FACILITIES

Shower • Bike Racks • Lockers

### COMMUNAL AREA & DEVELOPMENT FEATURES

Communal Pavilion • EV Charging Stations  
(Future) • Solar Panels (Future)  
Recycling Corner • Water Saving Fittings  
Double-Glazed Windows  
(For Selected Units) • Motion-Sensor  
Lightings (Common Staircase)

### 终点便利设施

淋浴间 • 自行车停放架 • 储物柜

### 公共空间与项目特色

公共休憩亭 • 电动车充电站（未来规划）  
太阳能板（未来规划）• 回收角  
节水设备 • 双层玻璃窗（部分单位适用）  
感应式照明系统（公共楼梯间）

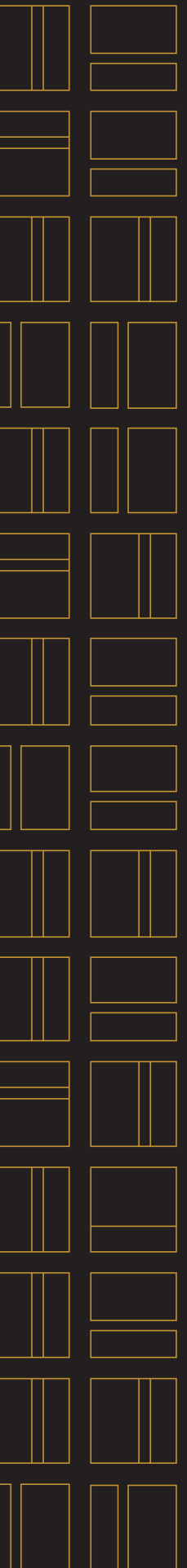


### BUSINESS SUITABILITY

- Media House
- Fashion Designing
- E-Business
- Live Streaming House
- Training Academy (In-House)
- Telecommunications
- Training Centre (In-House)
- Software Developers
- Electronic Publishing
- Call Centre
- Robotics and Automation

### 适合业务类型

- 媒体机构
- 服装设计
- 电子商务
- 直播机构
- 培训学院（内部）
- 电信公司
- 培训中心（内部）
- 软件开发商
- 电子出版
- 呼叫中心
- 电子商务平台



1ST STOREY  
- SITE PLAN



5TH STOREY  
- COMMUNAL PAVILION



- 01 Ingress (In)
- 02 Egress (Out)
- 03 Drop-off Point
- 04 Passenger Lift Lobby
- 05 Service Lift
- 06 Carpark Lots
- 07 Lorry Lots cum Loading / Unloading Bays
- 08 Locker
- 09 Toilet
- 10 Accessible Toilet
- 11 Bicycle Parking Area
- 12 Bin Centre
- 13 Transformer Room, Consumer Switchroom
- 14 Cable Chamber, PG Switchroom
- 15 Genset
- 16 Pedestrian Entry
- 17 Communal Pavilion With BBQ Pit
- 18 Bus Stop

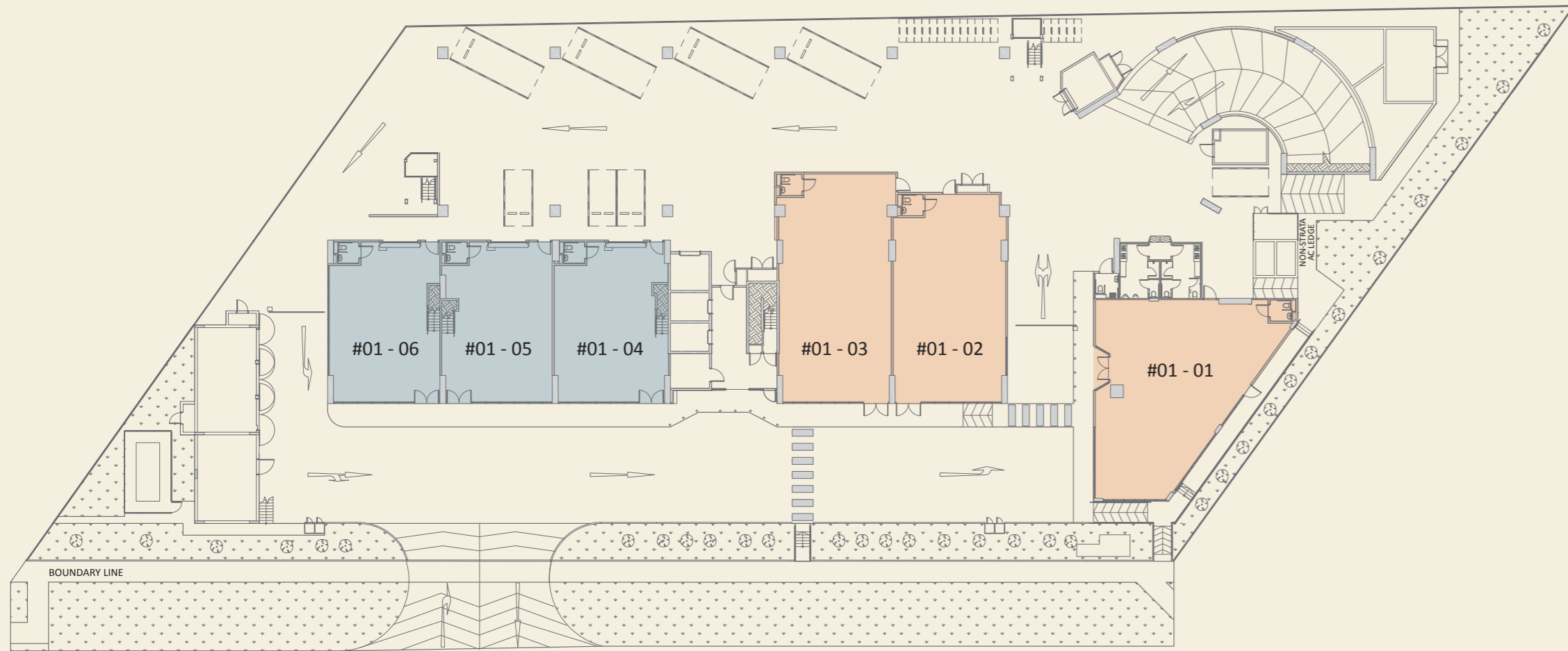
- Industrial Canteens
- Production Units



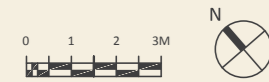
Scan here to view specifications

Building Plan No.:  
A2021-00001-2025-BP01 dated 30 March 2026  
Disclaimer: This is not an "as-built" plan. Any measurements stated or depicted in this drawing are approximate measurements and are subject to final survey.

# 1ST STOREY

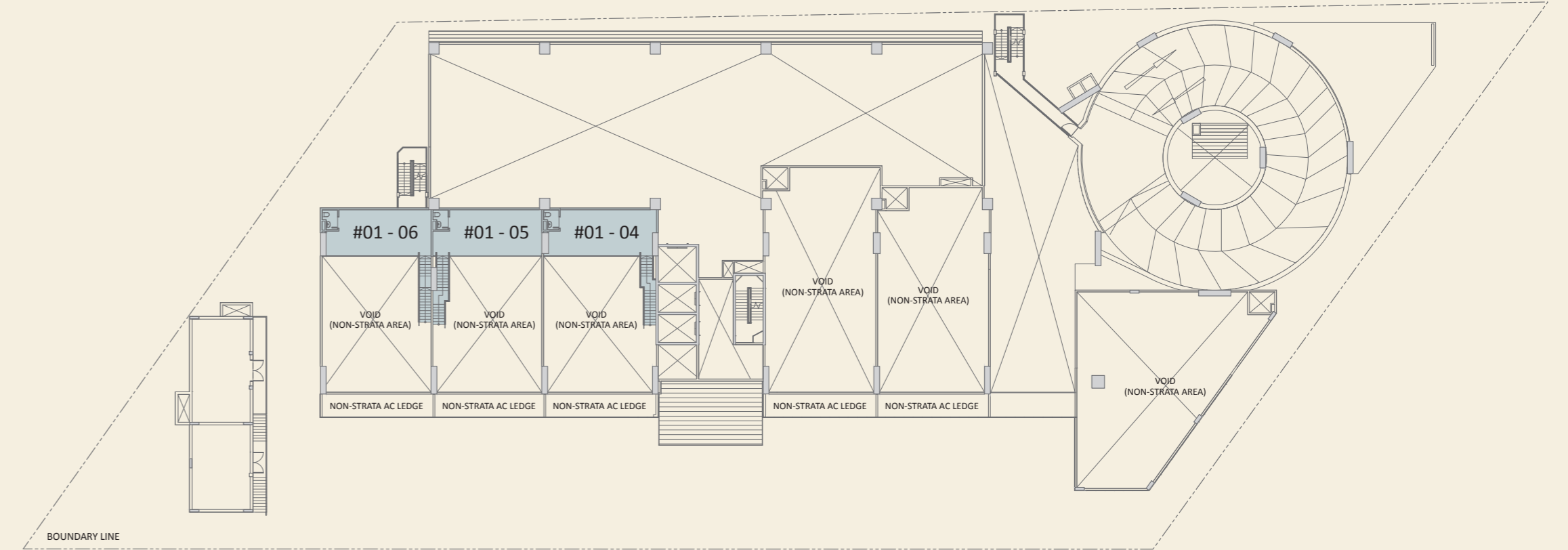


- Industrial Canteens
- Production Units
- Landscape / Planter

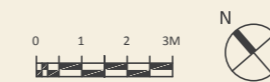


While reasonable care has been taken in the preparation of this brochure, neither the developer nor its agents assume any responsibility for any inaccuracies or omissions. All information, specifications, renderings, visual representations and plans are subject to change as may be required by relevant authorities. All plans and areas are approximate measurements and subject to final survey. Please refer to the letter containing the Particulars, Documents and Information relating to the development and the unit, for the floor plan relating to the unit you intend to purchase. The Sale and Purchase Agreement shall form the entire agreement between the developer and the purchaser and supersedes in all respects all previous representations, warranties, promises, inducements or statements of intention, whether written or oral made by the developer and/or the developer's agent which are not in the Sale and Purchase Agreement.

# 1ST STOREY MEZZANINE



- Production Units

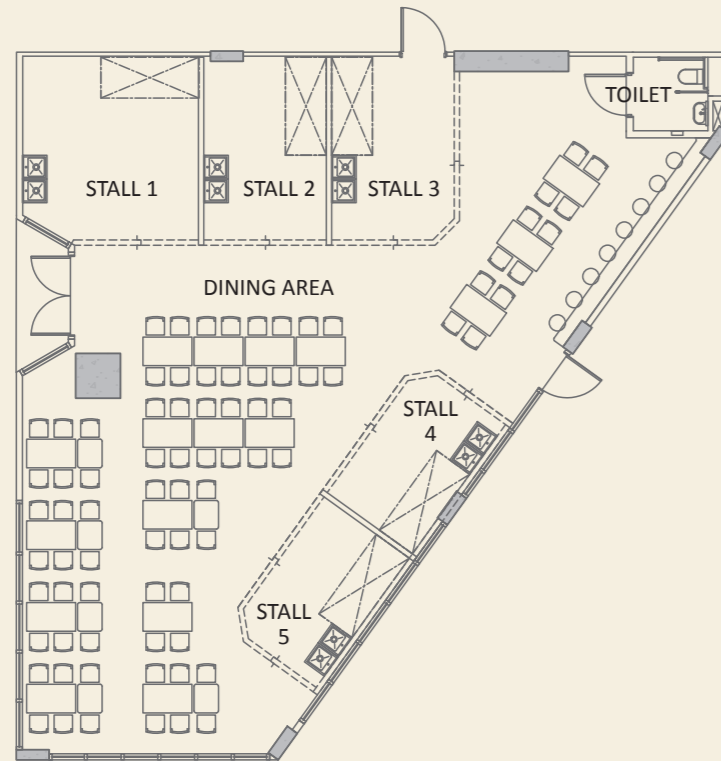


While reasonable care has been taken in the preparation of this brochure, neither the developer nor its agents assume any responsibility for any inaccuracies or omissions. All information, specifications, renderings, visual representations and plans are subject to change as may be required by relevant authorities. All plans and areas are approximate measurements and subject to final survey. Please refer to the letter containing the Particulars, Documents and Information relating to the development and the unit, for the floor plan relating to the unit you intend to purchase. The Sale and Purchase Agreement shall form the entire agreement between the developer and the purchaser and supersedes in all respects all previous representations, warranties, promises, inducements or statements of intention, whether written or oral made by the developer and/or the developer's agent which are not in the Sale and Purchase Agreement.

## TEST-FIT LAYOUT

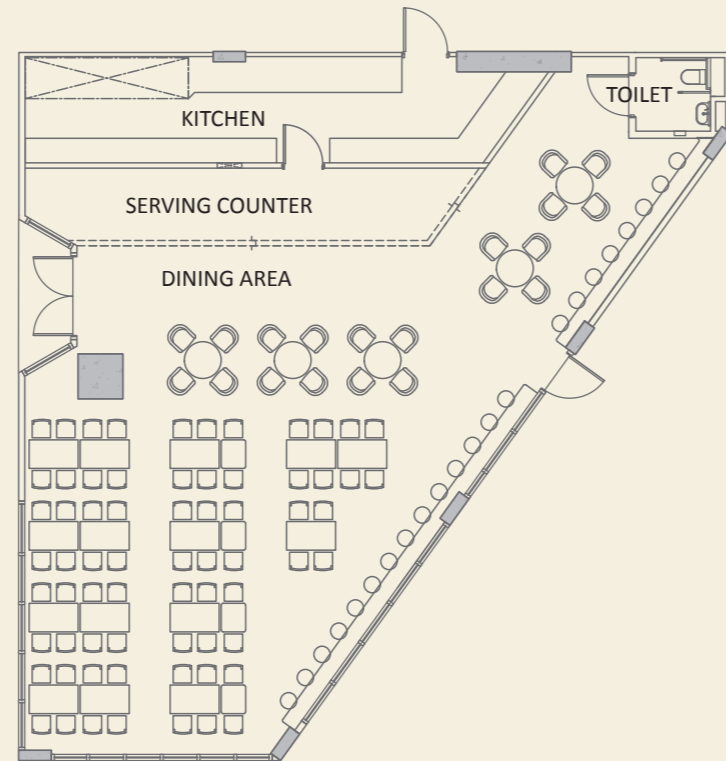
### #01 - 01 CANTEEN 1

No. of Stalls	5
No. of Seats	88
No. of Toilet	1

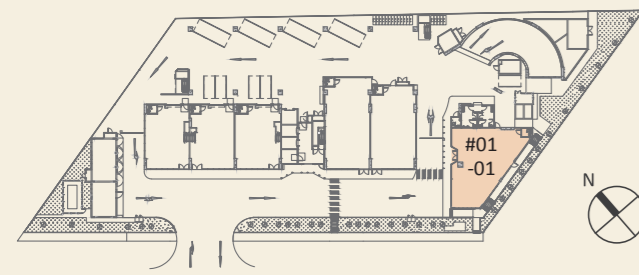


### #01 - 01 CANTEEN 1 WITHOUT STALL

No. of Seats	110
Kitchen	1
Serving Counter	1
No. of Toilet	1



SCAN HERE TO VIEW  
THE TEST-FIT PLAN

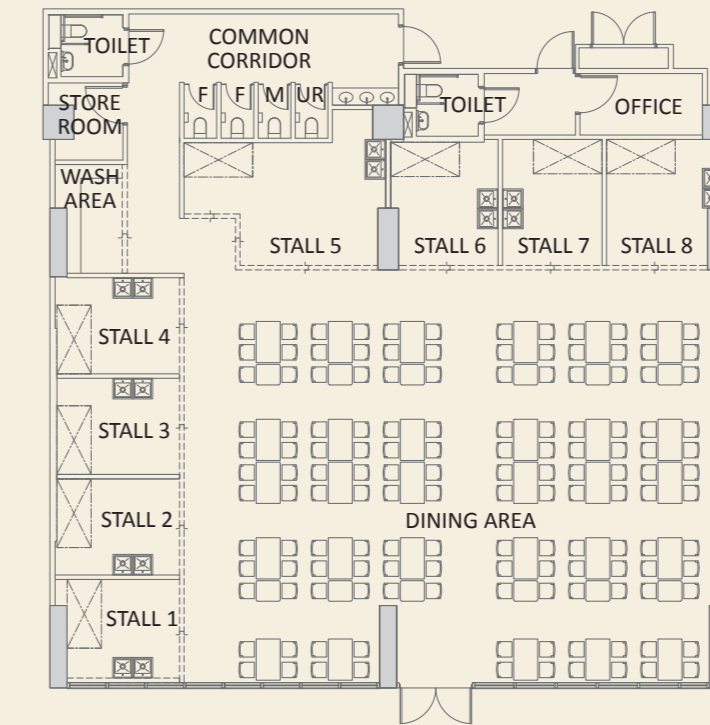


While reasonable care has been taken in the preparation of this brochure, neither the developer nor its agents assume any responsibility for any inaccuracies or omissions. All information, specifications, renderings, visual representations and plans are subject to change as may be required by relevant authorities. All plans and areas are approximate measurements and subject to final survey. Please refer to the letter containing the Particulars, Documents and Information relating to the development and the unit, for the floor plan relating to the unit you intend to purchase. The Sale and Purchase Agreement shall form the entire agreement between the developer and the purchaser and supersedes in all respects all previous representations, warranties, promises, inducements or statements of intention, whether written or oral made by the developer and/or the developer's agent which are not in the Sale and Purchase Agreement.

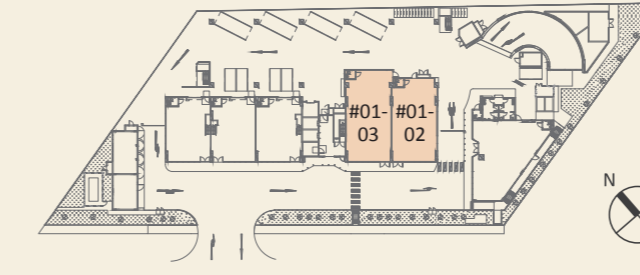
## TEST-FIT LAYOUT

### #01 - 02 & #01 - 03 CANTEEN 2 & CANTEEN 3

No. of Stalls	8
No. of Seats	140
No. of Toilets	6
Office	1
Wash Area	1
Store Room	1



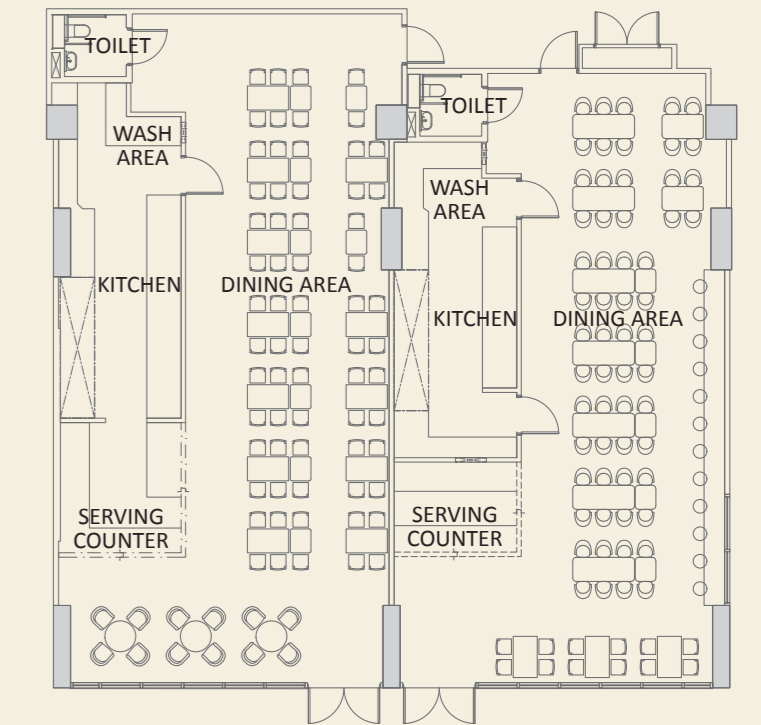
SCAN HERE TO VIEW  
THE TEST-FIT PLAN



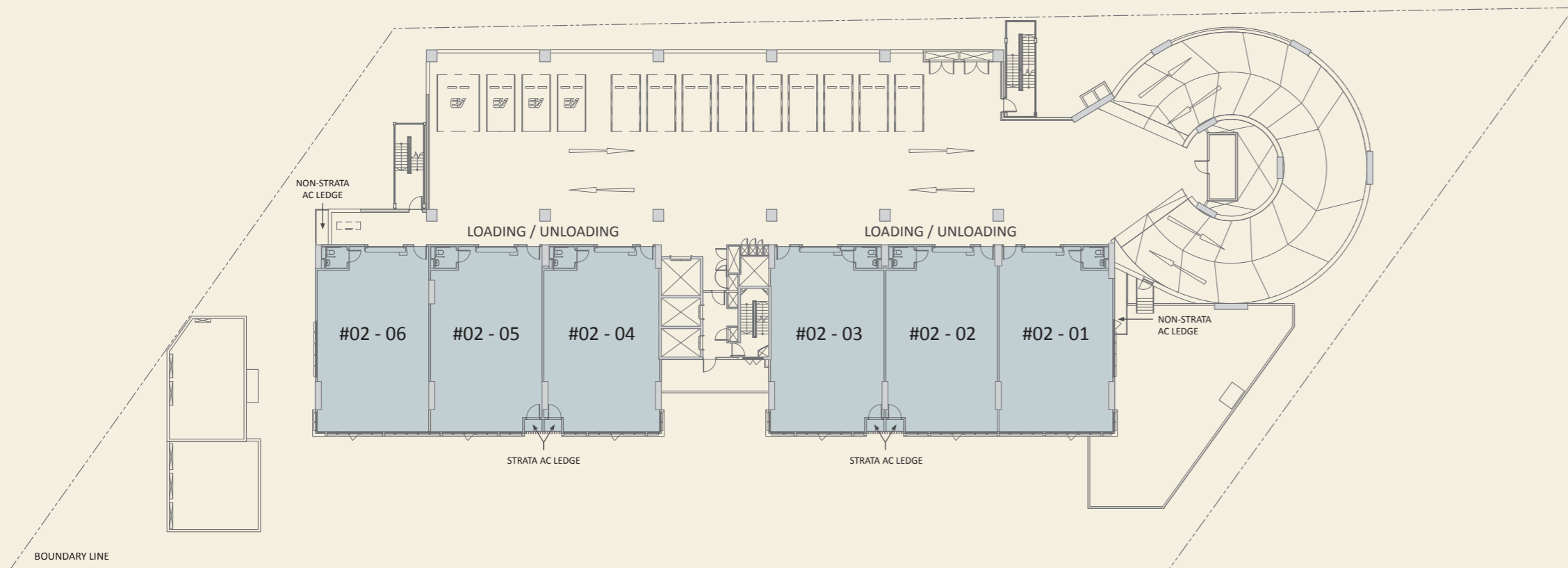
While reasonable care has been taken in the preparation of this brochure, neither the developer nor its agents assume any responsibility for any inaccuracies or omissions. All information, specifications, renderings, visual representations and plans are subject to change as may be required by relevant authorities. All plans and areas are approximate measurements and subject to final survey. Please refer to the letter containing the Particulars, Documents and Information relating to the development and the unit, for the floor plan relating to the unit you intend to purchase. The Sale and Purchase Agreement shall form the entire agreement between the developer and the purchaser and supersedes in all respects all previous representations, warranties, promises, inducements or statements of intention, whether written or oral made by the developer and/or the developer's agent which are not in the Sale and Purchase Agreement.

### #01 - 02 & #01 - 03 CANTEEN 2 | CANTEEN 3 WITHOUT STALL

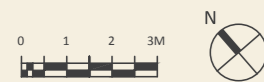
No. of Seats	84   78
Kitchen	1   1
Wash Area	1   1
Serving Counter	1   1
No. of Toilet	1   1



## 2ND STOREY



● Production Units



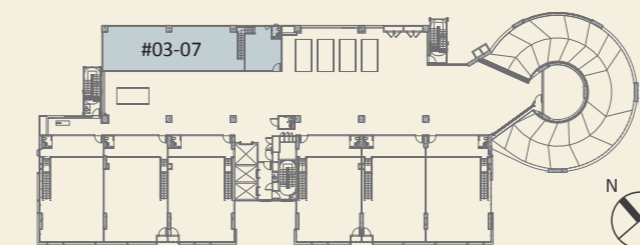
While reasonable care has been taken in the preparation of this brochure, neither the developer nor its agents assume any responsibility for any inaccuracies or omissions. All information, specifications, renderings, visual representations and plans are subject to change as may be required by relevant authorities. All plans and areas are approximate measurements and subject to final survey. Please refer to the letter containing the Particulars, Documents and Information relating to the development and the unit, for the floor plan relating to the unit you intend to purchase. The Sale and Purchase Agreement shall form the entire agreement between the developer and the purchaser and supersedes in all respects all previous representations, warranties, promises, inducements or statements of intention, whether written or oral made by the developer and/or the developer's agent which are not in the Sale and Purchase Agreement.

## TEST-FIT LAYOUT

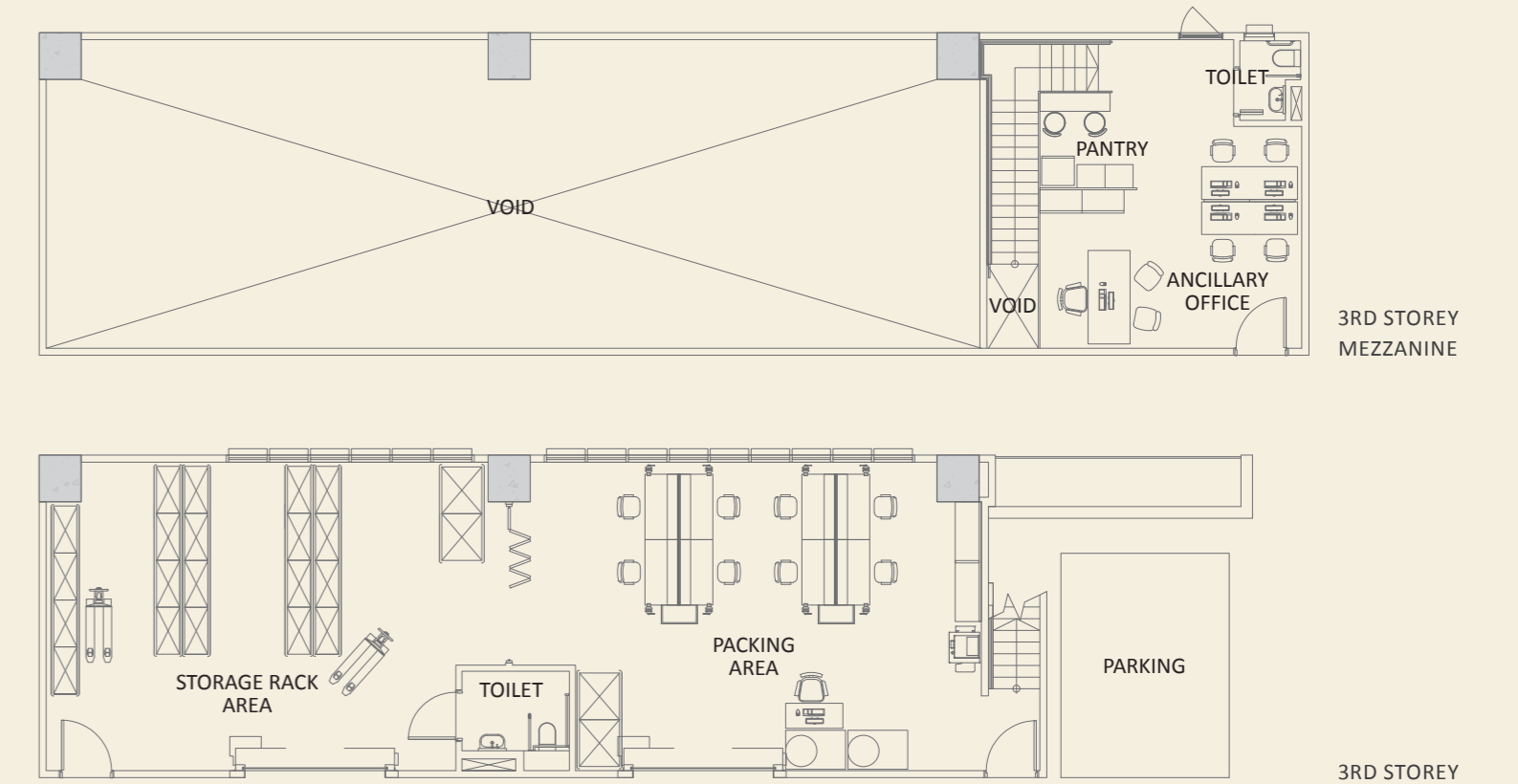
### #03 - 07 PACKAGING & PROCESSING WORKSHOP

No. of Toilets	2
Ancillary Office	1
Storage Rack Area	1
Packing Area	1
Pantry	1

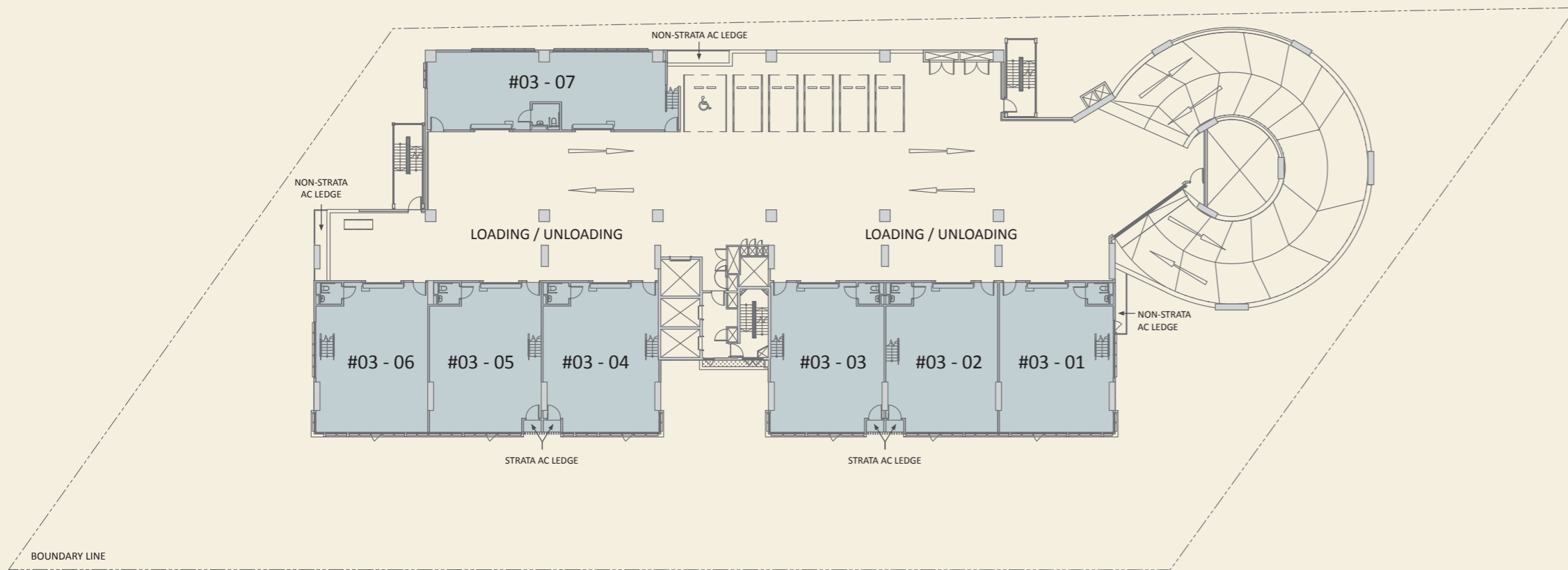
SCAN HERE TO VIEW  
THE TEST-FIT PLAN



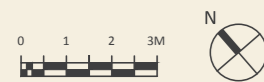
While reasonable care has been taken in the preparation of this brochure, neither the developer nor its agents assume any responsibility for any inaccuracies or omissions. All information, specifications, renderings, visual representations and plans are subject to change as may be required by relevant authorities. All plans and areas are approximate measurements and subject to final survey. Please refer to the letter containing the Particulars, Documents and Information relating to the development and the unit, for the floor plan relating to the unit you intend to purchase. The Sale and Purchase Agreement shall form the entire agreement between the developer and the purchaser and supersedes in all respects all previous representations, warranties, promises, inducements or statements of intention, whether written or oral made by the developer and/or the developer's agent which are not in the Sale and Purchase Agreement.



## 3RD STOREY

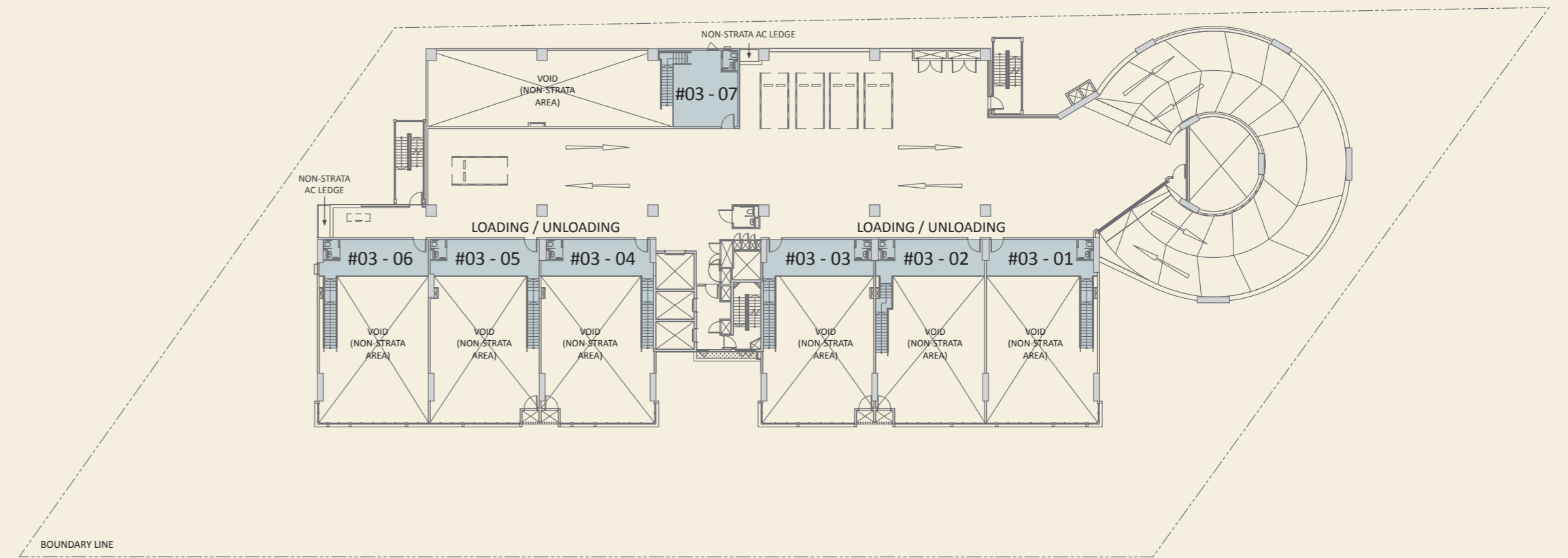


● Production Units

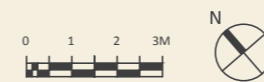


While reasonable care has been taken in the preparation of this brochure, neither the developer nor its agents assume any responsibility for any inaccuracies or omissions. All information, specifications, renderings, visual representations and plans are subject to change as may be required by relevant authorities. All plans and areas are approximate measurements and subject to final survey. Please refer to the letter containing the Particulars, Documents and Information relating to the development and the unit, for the floor plan relating to the unit you intend to purchase. The Sale and Purchase Agreement shall form the entire agreement between the developer and the purchaser and supersedes in all respects all previous representations, warranties, promises, inducements or statements of intention, whether written or oral made by the developer and/or the developer's agent which are not in the Sale and Purchase Agreement.

## 3RD STOREY MEZZANINE

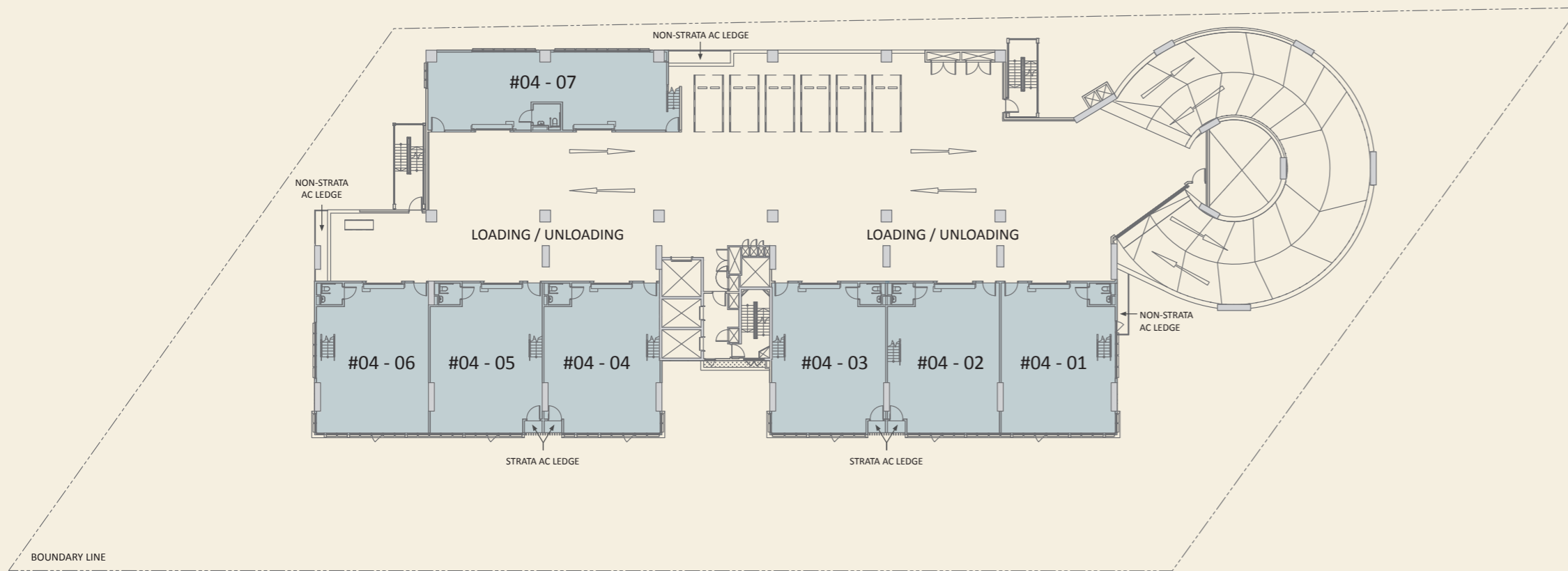


● Production Units

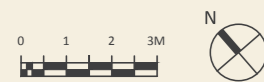


While reasonable care has been taken in the preparation of this brochure, neither the developer nor its agents assume any responsibility for any inaccuracies or omissions. All information, specifications, renderings, visual representations and plans are subject to change as may be required by relevant authorities. All plans and areas are approximate measurements and subject to final survey. Please refer to the letter containing the Particulars, Documents and Information relating to the development and the unit, for the floor plan relating to the unit you intend to purchase. The Sale and Purchase Agreement shall form the entire agreement between the developer and the purchaser and supersedes in all respects all previous representations, warranties, promises, inducements or statements of intention, whether written or oral made by the developer and/or the developer's agent which are not in the Sale and Purchase Agreement.

## 4TH STOREY

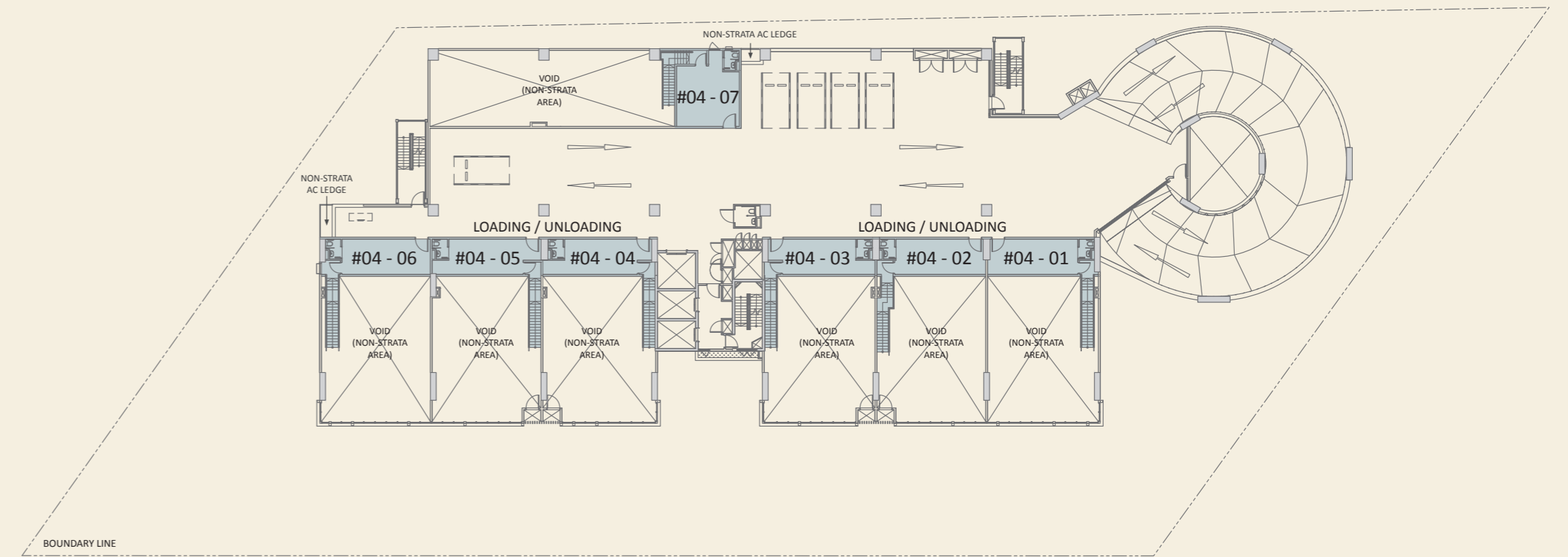


● Production Units

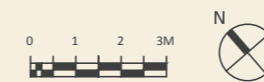


While reasonable care has been taken in the preparation of this brochure, neither the developer nor its agents assume any responsibility for any inaccuracies or omissions. All information, specifications, renderings, visual representations and plans are subject to change as may be required by relevant authorities. All plans and areas are approximate measurements and subject to final survey. Please refer to the letter containing the Particulars, Documents and Information relating to the development and the unit, for the floor plan relating to the unit you intend to purchase. The Sale and Purchase Agreement shall form the entire agreement between the developer and the purchaser and supersedes in all respects all previous representations, warranties, promises, inducements or statements of intention, whether written or oral made by the developer and/or the developer's agent which are not in the Sale and Purchase Agreement.

## 4TH STOREY MEZZANINE



● Production Units

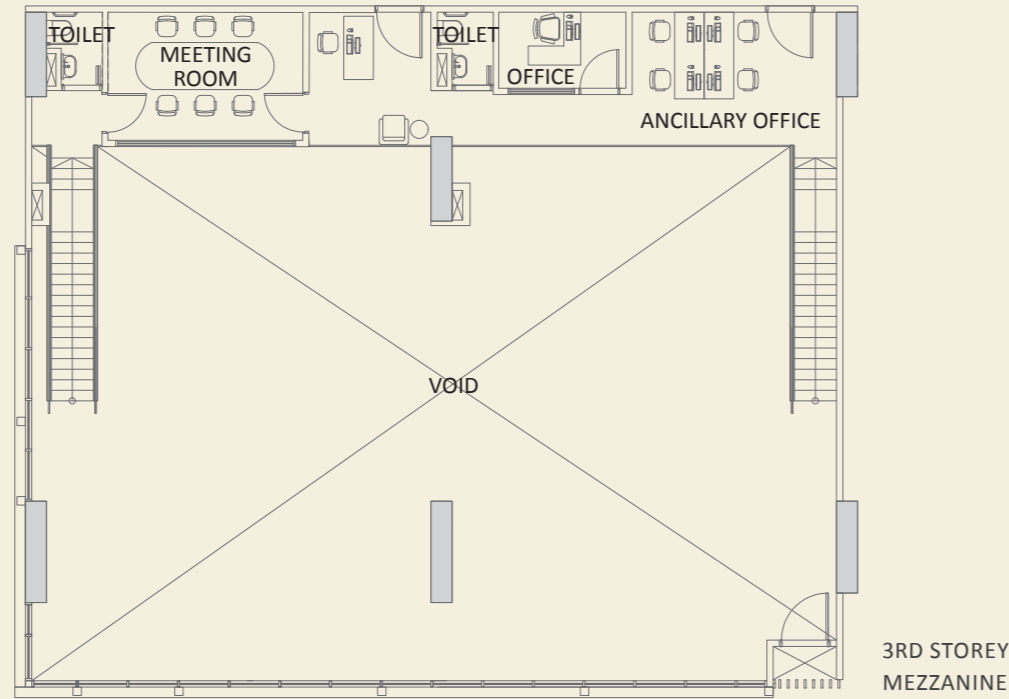


While reasonable care has been taken in the preparation of this brochure, neither the developer nor its agents assume any responsibility for any inaccuracies or omissions. All information, specifications, renderings, visual representations and plans are subject to change as may be required by relevant authorities. All plans and areas are approximate measurements and subject to final survey. Please refer to the letter containing the Particulars, Documents and Information relating to the development and the unit, for the floor plan relating to the unit you intend to purchase. The Sale and Purchase Agreement shall form the entire agreement between the developer and the purchaser and supersedes in all respects all previous representations, warranties, promises, inducements or statements of intention, whether written or oral made by the developer and/or the developer's agent which are not in the Sale and Purchase Agreement.

## TEST-FIT LAYOUT

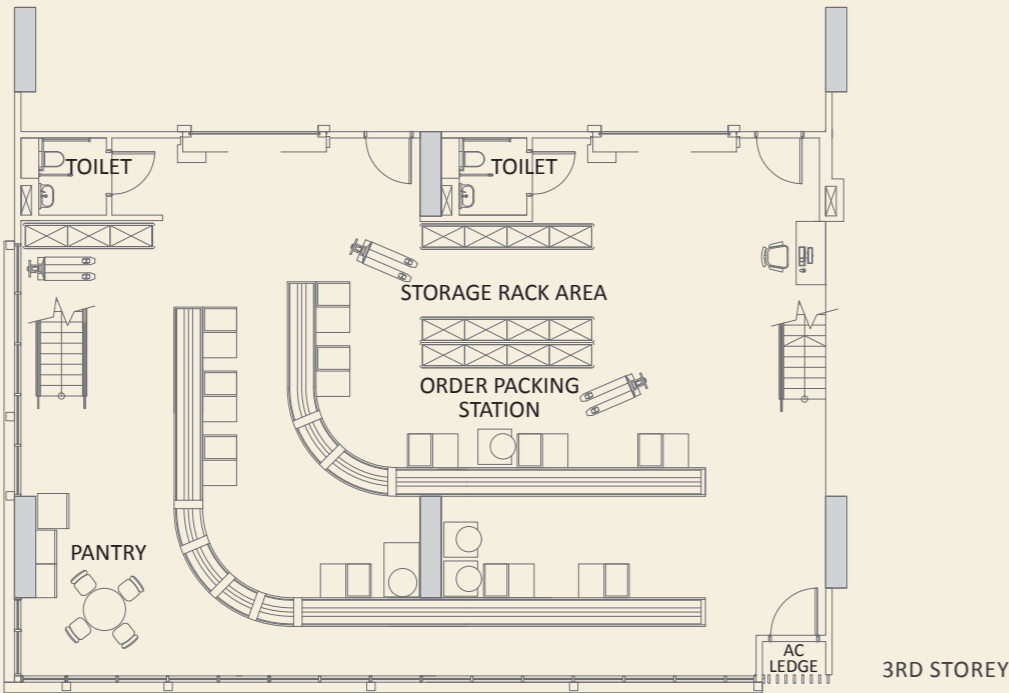
### #03 - 05 & #03 - 06 WAREHOUSE STORAGE FACILITY

No. of Toilets	4
Ancillary Office	1
Office	1
Order Packing Area	1
Storage Rack Area	1
Meeting Room	1
Pantry	1

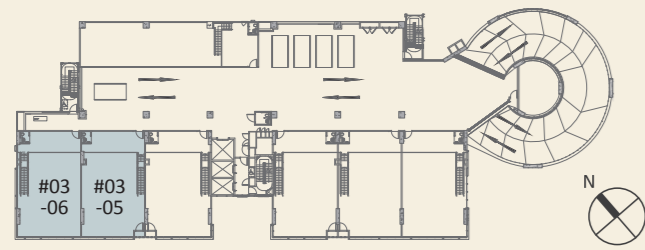


3RD STOREY  
MEZZANINE

SCAN HERE TO VIEW  
THE TEST-FIT PLAN



3RD STOREY

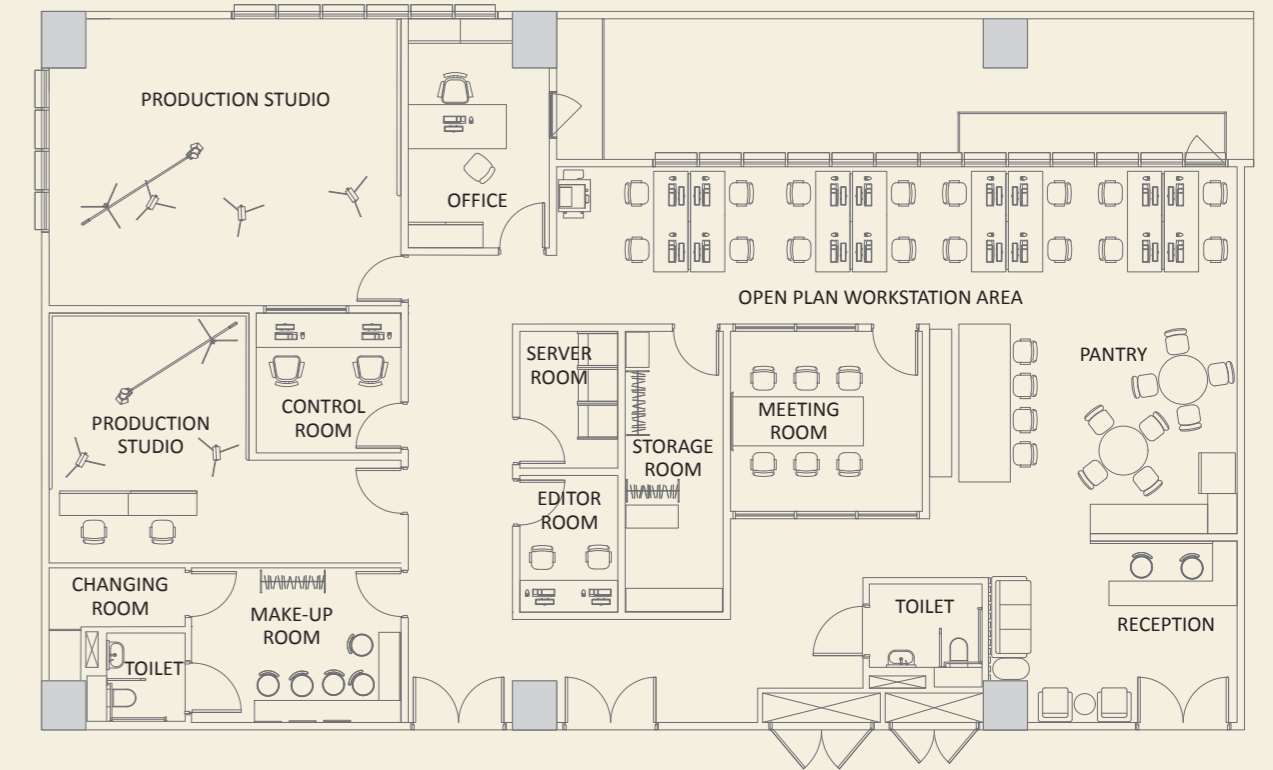


While reasonable care has been taken in the preparation of this brochure, neither the developer nor its agents assume any responsibility for any inaccuracies or omissions. All information, specifications, renderings, visual representations and plans are subject to change as may be required by relevant authorities. All plans and areas are approximate measurements and subject to final survey. Please refer to the letter containing the Particulars, Documents and Information relating to the development and the unit, for the floor plan relating to the unit you intend to purchase. The Sale and Purchase Agreement shall form the entire agreement between the developer and the purchaser and supersedes in all respects all previous representations, warranties, promises, inducements or statements of intention, whether written or oral made by the developer and/or the developer's agent which are not in the Sale and Purchase Agreement.

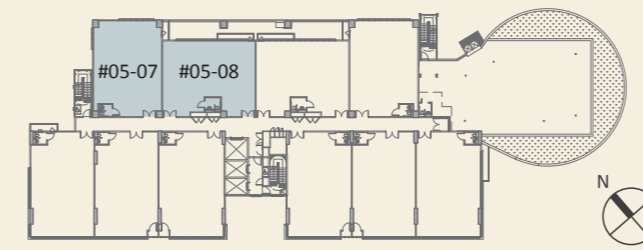
## TEST-FIT LAYOUT

### #05 - 07 & #05 - 08 MEDIA PRODUCTION STUDIO

No. of Work Stations	16
No. of Toilet	2
No. of Production Studios	2
Control Room	1
Server Room	1
Storage Room	1
Meeting Room	1
Changing Room	1
Office	1
Reception	1
Pantry	1



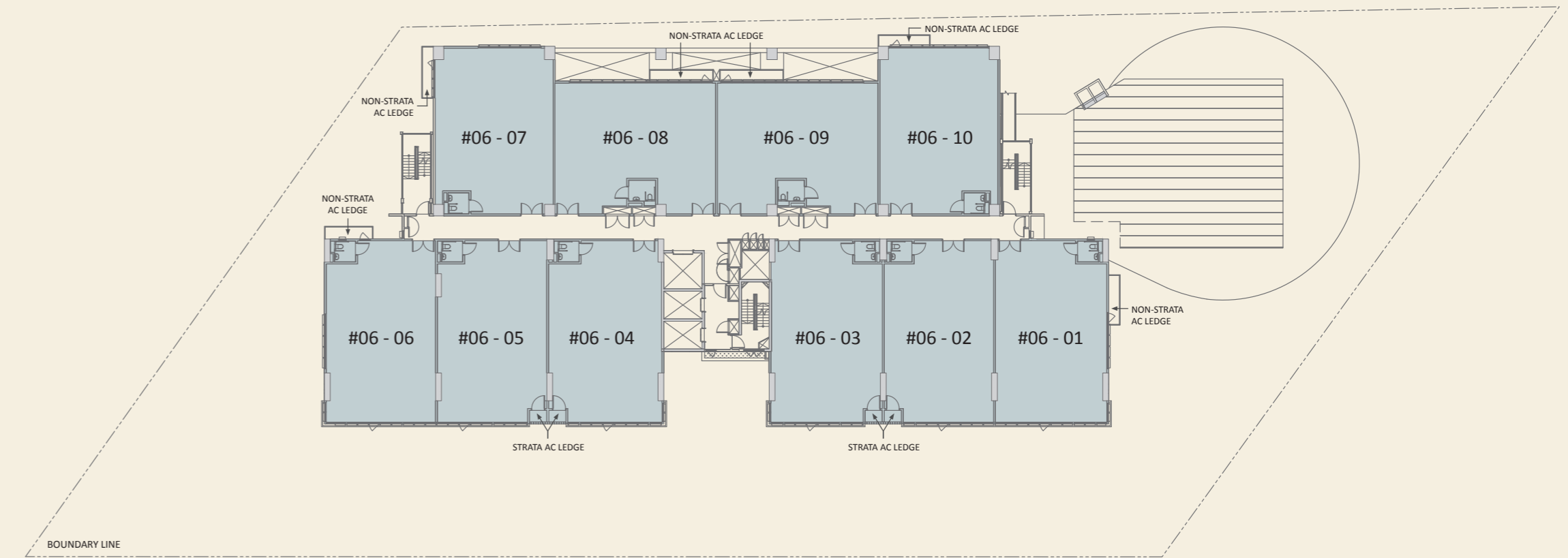
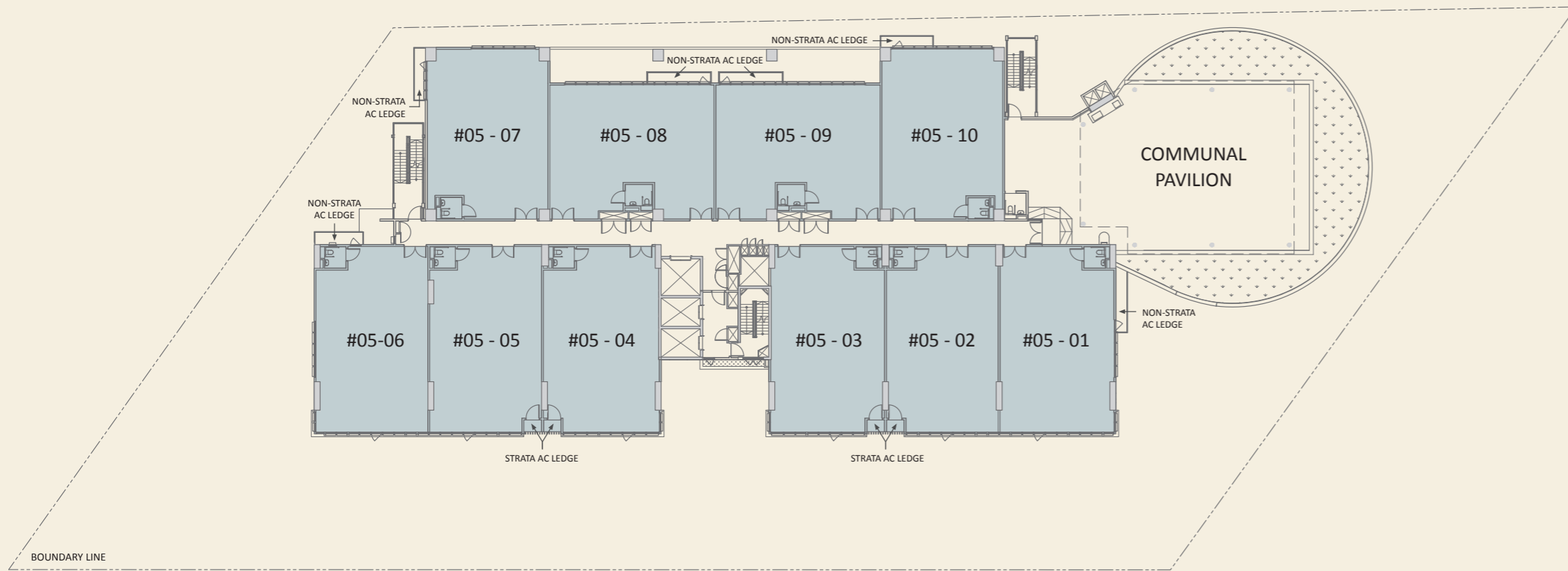
SCAN HERE TO VIEW  
THE TEST-FIT PLAN



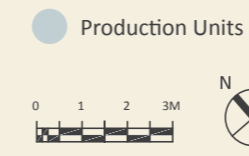
While reasonable care has been taken in the preparation of this brochure, neither the developer nor its agents assume any responsibility for any inaccuracies or omissions. All information, specifications, renderings, visual representations and plans are subject to change as may be required by relevant authorities. All plans and areas are approximate measurements and subject to final survey. Please refer to the letter containing the Particulars, Documents and Information relating to the development and the unit, for the floor plan relating to the unit you intend to purchase. The Sale and Purchase Agreement shall form the entire agreement between the developer and the purchaser and supersedes in all respects all previous representations, warranties, promises, inducements or statements of intention, whether written or oral made by the developer and/or the developer's agent which are not in the Sale and Purchase Agreement.

## 5TH STOREY

## 6TH STOREY



While reasonable care has been taken in the preparation of this brochure, neither the developer nor its agents assume any responsibility for any inaccuracies or omissions. All information, specifications, renderings, visual representations and plans are subject to change as may be required by relevant authorities. All plans and areas are approximate measurements and subject to final survey. Please refer to the letter containing the Particulars, Documents and Information relating to the development and the unit, for the floor plan relating to the unit you intend to purchase. The Sale and Purchase Agreement shall form the entire agreement between the developer and the purchaser and supersedes in all respects all previous representations, warranties, promises, inducements or statements of intention, whether written or oral made by the developer and/or the developer's agent which are not in the Sale and Purchase Agreement.



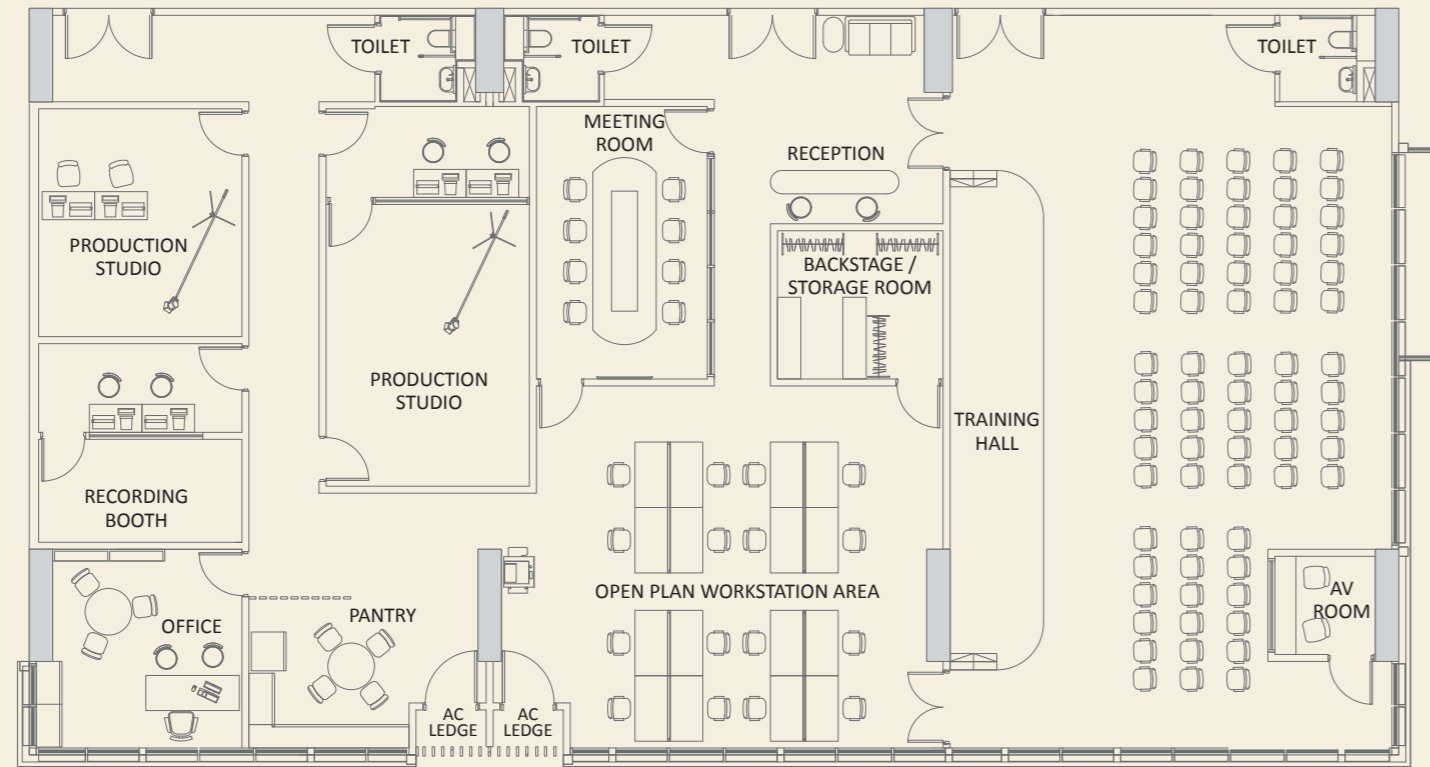
While reasonable care has been taken in the preparation of this brochure, neither the developer nor its agents assume any responsibility for any inaccuracies or omissions. All information, specifications, renderings, visual representations and plans are subject to change as may be required by relevant authorities. All plans and areas are approximate measurements and subject to final survey. Please refer to the letter containing the Particulars, Documents and Information relating to the development and the unit, for the floor plan relating to the unit you intend to purchase. The Sale and Purchase Agreement shall form the entire agreement between the developer and the purchaser and supersedes in all respects all previous representations, warranties, promises, inducements or statements of intention, whether written or oral made by the developer and/or the developer's agent which are not in the Sale and Purchase Agreement.

# TEST-FIT LAYOUT

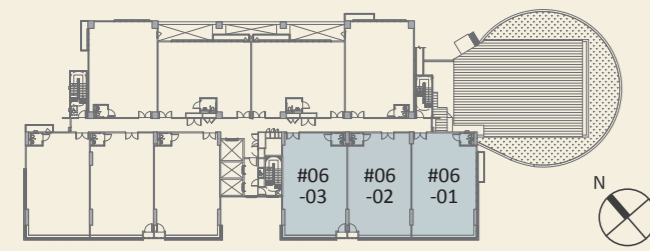
# 7TH & 8TH STOREY

## #06 - 01 TO 03 PRODUCTION STUDIO COMPANY

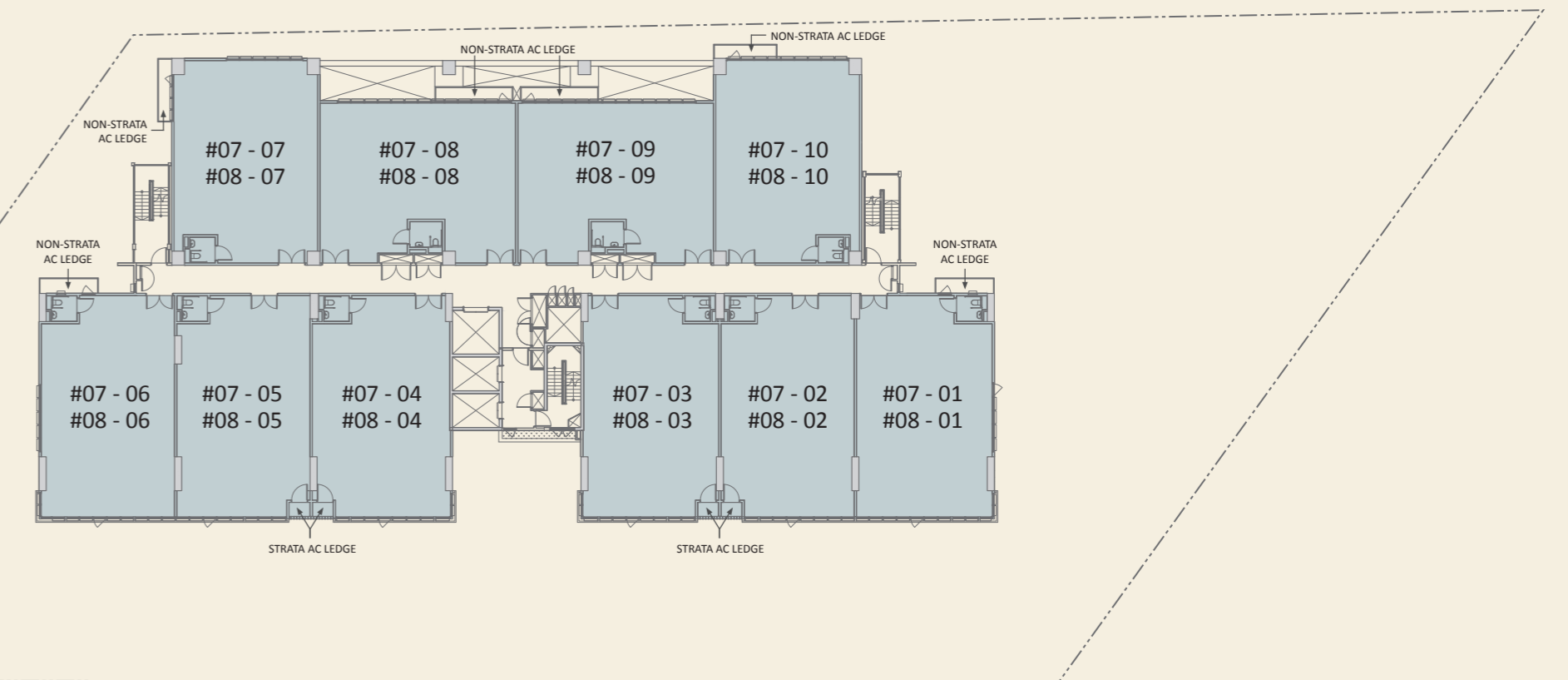
- No. of Work Stations 8
- No. of Toilets 3
- No. of Production Studios 2
- Recording Booth 1
- Training Hall 1
- AV Room 1
- Backstage / Storage Room 1
- Office 1
- Meeting Room 1
- Pantry 1



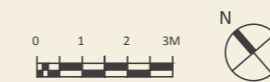
SCAN HERE TO VIEW  
THE TEST-FIT PLAN



While reasonable care has been taken in the preparation of this brochure, neither the developer nor its agents assume any responsibility for any inaccuracies or omissions. All information, specifications, renderings, visual representations and plans are subject to change as may be required by relevant authorities. All plans and areas are approximate measurements and subject to final survey. Please refer to the letter containing the Particulars, Documents and Information relating to the development and the unit, for the floor plan relating to the unit you intend to purchase. The Sale and Purchase Agreement shall form the entire agreement between the developer and the purchaser and supersedes in all respects all previous representations, warranties, promises, inducements or statements of intention, whether written or oral made by the developer and/or the developer's agent which are not in the Sale and Purchase Agreement.



● Production Units



While reasonable care has been taken in the preparation of this brochure, neither the developer nor its agents assume any responsibility for any inaccuracies or omissions. All information, specifications, renderings, visual representations and plans are subject to change as may be required by relevant authorities. All plans and areas are approximate measurements and subject to final survey. Please refer to the letter containing the Particulars, Documents and Information relating to the development and the unit, for the floor plan relating to the unit you intend to purchase. The Sale and Purchase Agreement shall form the entire agreement between the developer and the purchaser and supersedes in all respects all previous representations, warranties, promises, inducements or statements of intention, whether written or oral made by the developer and/or the developer's agent which are not in the Sale and Purchase Agreement.

# DEVELOPER PROFILE



Since 1999, CHIU TENG GROUP has built a reputation as a trusted developer and builder of high-quality industrial and commercial properties. Our projects are defined by intelligent design and reliable construction, with a focus on meeting people's needs. Versatility is central to our solutions, with modular designs enabling flexible use for both start-ups and established businesses. We emphasise construction quality to ensure durability, ease of maintenance, and precision. From development to construction, we deliver spaces that inspire innovation.



CT PEMIMPIN



CT FOODNEX



CT FOODCHAIN



CT HUB 2



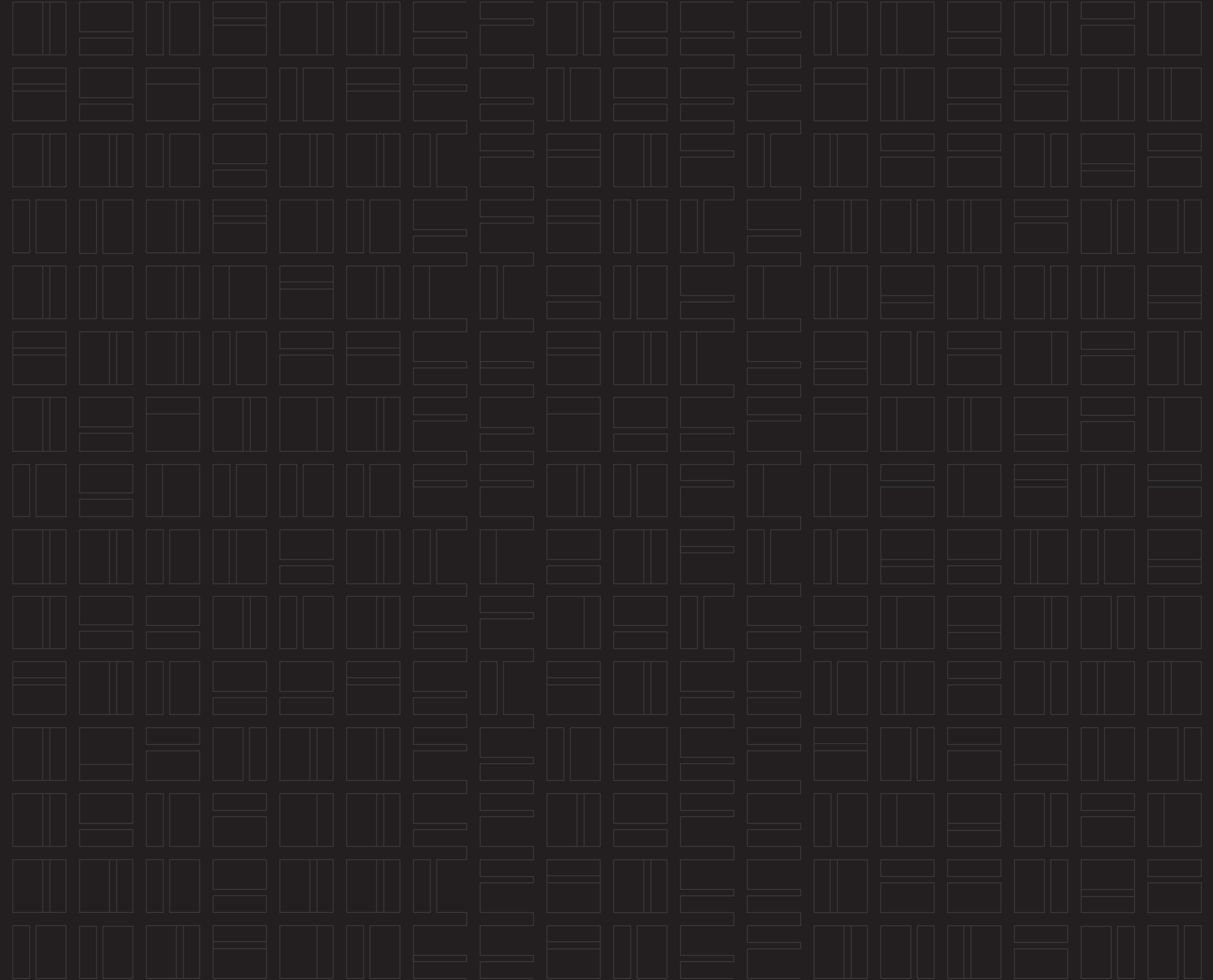
CT HUB



TAGORE 8



9@TAGORE



Project Name: CT Gold @ Macpherson • Developer: CT Macpherson Pte. Ltd. (Co. Reg. No.: 202521531C) • Land Tenure: Estate in Fee Simple • Encumbrances on Land: Mortgage in favour of Hong Leong Finance Limited • Location: Lot 06986C MK24 at 5 Lorong Bakar Batu Singapore 348742 • Building Plan No.: A2021-00001-2025-BP01 Dated 30 March 2026 • Expected Date of Vacant Possession: 30 November 2030 • Expected Date of Legal Completion: 30 November 2033

While reasonable care has been taken in the preparation of this brochure, including the specifications, plans, sales models, and showflats, the Developer and its agents shall not be held responsible for any inaccuracies or omissions. The statements, information, depictions, and plans in this brochure are believed to be accurate at the time of publication but should not be regarded or relied upon as statements or representations of fact. All information, specifications, plans, and depictions are current at the time of publication and are subject to change or amendments as required and/or approved by the Developer or relevant authorities and shall not be regarded as statements or representations of fact. Visual representations, illustrations, photographs, pictures, drawings, art renderings, display models, and showflat displays are artist's impressions only and should not be considered factual representations of the development. Photographs and renderings used may not reflect actual built standards or specifications. All plans and layouts are not to scale and may be subject to changes or amendments as directed by the Developer or relevant authorities. Floor areas indicated in the brochure are approximate measurements only and are subject to final survey. The development is subject to inspection by the Developer or relevant authorities to comply with the current codes of practice. All plans are subject to amendments as directed or approved by the Developer or relevant authorities. All areas are approximate measurements only and subject to final survey. The Sale and Purchase Agreement shall form the entire agreement between the Developer and the purchaser and shall supersede all statements, representations, or promises made prior to the signing of the sales and purchase agreement and shall in no way be modified by any such statements, representations or promises made.