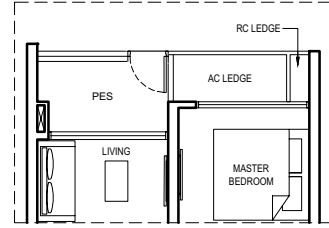


# 1 BEDROOM

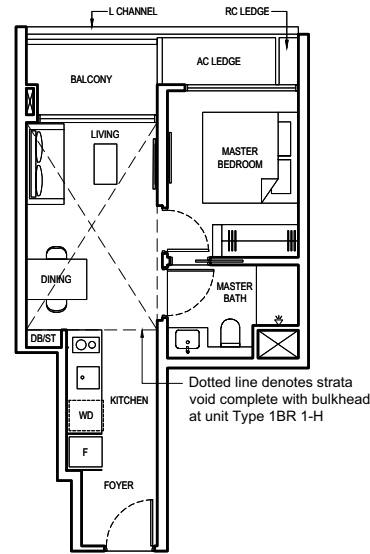
## TYPE 1BR 1-PES

42 SQM / 452 SQFT  
 (INCLUSIVE OF 4 SQM PES  
 & 2 SQM AC LEDGE)  
 BLOCK 6 #01-19 (mirrored)  
 BLOCK 8 #01-22  
 BLOCK 12 #01-39



## TYPE 1BR 1

42 SQM / 452 SQFT  
 (INCLUSIVE OF 4 SQM BALCONY  
 & 2 SQM AC LEDGE)  
 BLOCK 6 #02-19 to #17-19 (mirrored)  
 BLOCK 8 #02-22 to #17-22  
 BLOCK 12 #02-39 to #17-39



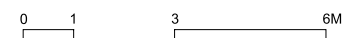
## TYPE 1BR 1-H

54 SQM / 581 SQFT  
 (INCLUSIVE OF 4 SQM BALCONY,  
 2 SQM AC LEDGE &  
 12 SQM STRATA VOID)  
 BLOCK 6 #18-19 (mirrored)  
 BLOCK 8 #18-22  
 BLOCK 12 #18-39

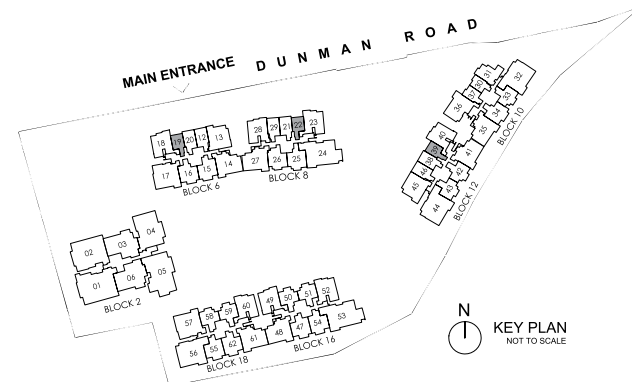
Dotted line denotes strata void complete with bulkhead at unit Type 1BR 1-H

### LEGEND:

- F FRIDGE
- WD WASHER CUM DRYER
- DB DISTRIBUTION BOARD
- ST STORE
- AC AIR-CONDITIONER
- RC REINFORCED CONCRETE (EXCLUDED FROM STRATA AREA)
- ☒ VOID SPACE (EXCLUDED FROM STRATA AREA)



ALL PLANS ARE SUBJECT TO CHANGES BY THE RELEVANT AUTHORITIES.  
 MEASUREMENTS ARE APPROXIMATE ONLY AND SUBJECT TO FINAL SURVEY.  
 INFORMATION ACCURATE AT POINT OF PRINTING.  
 BP NO.: A1716-00003-2022-BP01 DATED 15 MAY 2023  
 BP NO.: A1716-00003-2022-BP02 DATED 16 JUNE 2023

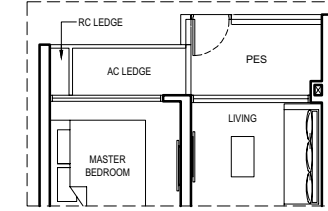


N  
 KEY PLAN  
 NOT TO SCALE

# 1 BEDROOM

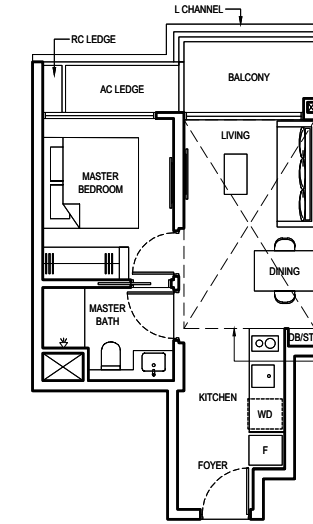
## TYPE 1BR 2-PES

42 SQM / 452 SQFT  
 (INCLUSIVE OF 5 SQM PES  
 & 2 SQM AC LEDGE)  
 BLOCK 10 #01-30  
 #01-37 (mirrored)



## TYPE 1BR 2

42 SQM / 452 SQFT  
 (INCLUSIVE OF 5 SQM BALCONY  
 & 2 SQM AC LEDGE)  
 BLOCK 10 #02-30 to #17-30  
 #02-37 to #17-37 (mirrored)



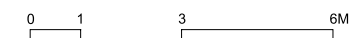
Dotted line denotes strata void complete with bulkhead at unit Type 1BR 2-H

## TYPE 1BR 2-H

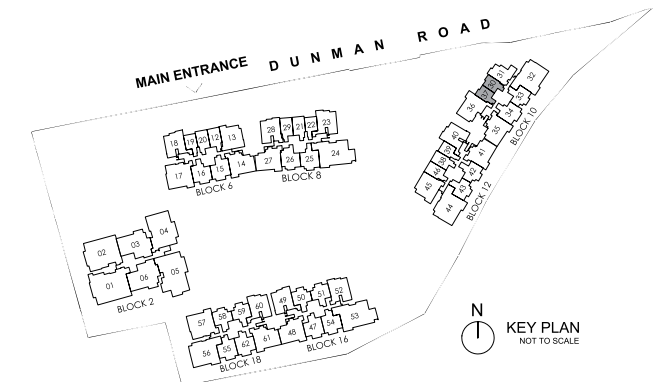
54 SQM / 581 SQFT  
 (INCLUSIVE OF 5 SQM BALCONY,  
 2 SQM AC LEDGE &  
 12 SQM STRATA VOID)  
 BLOCK 10 #18-30  
 #18-37 (mirrored)

### LEGEND:

- F FRIDGE
- WD WASHER CUM DRYER
- DB DISTRIBUTION BOARD
- ST STORE
- AC AIR-CONDITIONER
- RC REINFORCED CONCRETE (EXCLUDED FROM STRATA AREA)
- ☒ VOID SPACE (EXCLUDED FROM STRATA AREA)



ALL PLANS ARE SUBJECT TO CHANGES BY THE RELEVANT AUTHORITIES.  
 MEASUREMENTS ARE APPROXIMATE ONLY AND SUBJECT TO FINAL SURVEY.  
 INFORMATION ACCURATE AT POINT OF PRINTING.  
 BP NO.: A1716-00003-2022-BP01 DATED 15 MAY 2023  
 BP NO.: A1716-00003-2022-BP02 DATED 16 JUNE 2023

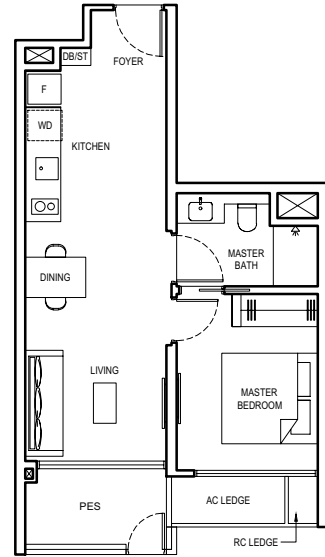


N  
 KEY PLAN  
 NOT TO SCALE

# 1 BEDROOM

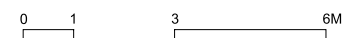
## TYPE 1BR 3-PES

51 SQM / 549 SQFT  
 (INCLUSIVE OF 5 SQM PES  
 & 2 SQM AC LEDGE)  
 BLOCK 10 #01-33  
 BLOCK 12 #01-43 (mirrored)

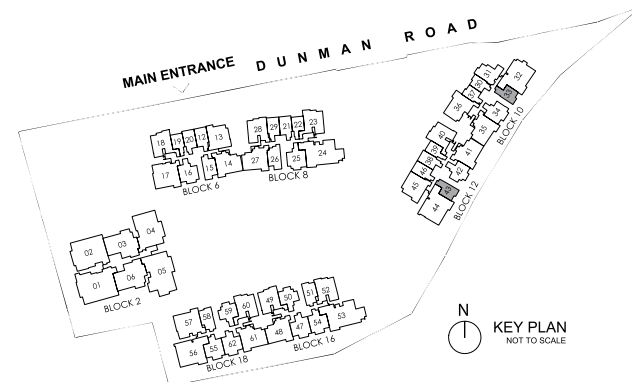


### LEGEND:

- F FRIDGE
- WD WASHER CUM DRYER
- DB DISTRIBUTION BOARD
- ST STORE
- AC AIR-CONDITIONER
- RC REINFORCED CONCRETE (EXCLUDED FROM STRATA AREA)
- ☒ VOID SPACE (EXCLUDED FROM STRATA AREA)



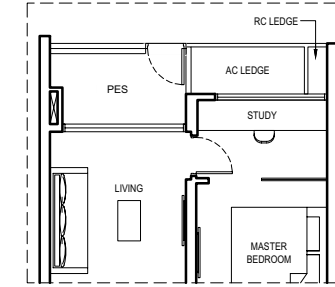
ALL PLANS ARE SUBJECT TO CHANGES BY THE RELEVANT AUTHORITIES.  
 MEASUREMENTS ARE APPROXIMATE ONLY AND SUBJECT TO FINAL SURVEY.  
 INFORMATION ACCURATE AT POINT OF PRINTING.  
 BP NO.: A1716-00003-2022-BP01 DATED 15 MAY 2023  
 BP NO.: A1716-00003-2022-BP02 DATED 16 JUNE 2023



# 1 BEDROOM + STUDY

## TYPE 1BR S1-PES

51 SQM / 549 SQFT  
 (INCLUSIVE OF 5 SQM PES  
 & 2 SQM AC LEDGE)  
 BLOCK 6 #01-20  
 BLOCK 8 #01-29  
 BLOCK 12 #01-46

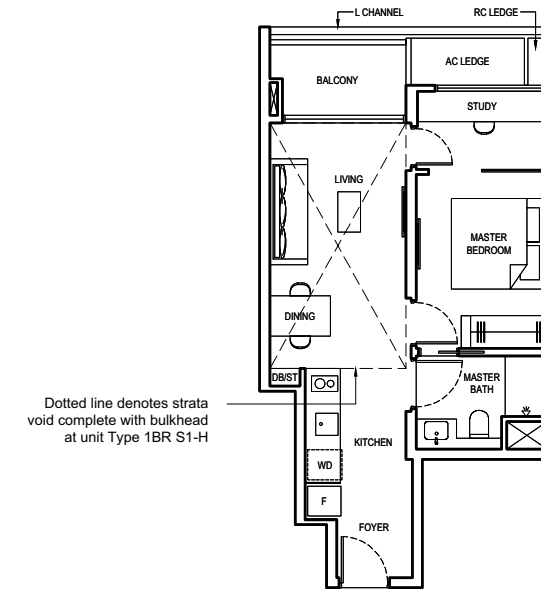


## TYPE 1BR S1

51 SQM / 549 SQFT  
 (INCLUSIVE OF 5 SQM BALCONY  
 & 2 SQM AC LEDGE)  
 BLOCK 6 #02-20 to #17-20  
 BLOCK 8 #02-29 to #17-29  
 BLOCK 12 #02-46 to #17-46

## TYPE 1BR S1-H

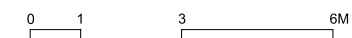
66 SQM / 710 SQFT  
 (INCLUSIVE OF 5 SQM BALCONY,  
 2 SQM AC LEDGE &  
 15 SQM STRATA VOID)  
 BLOCK 6 #18-20  
 BLOCK 8 #18-29  
 BLOCK 12 #18-46



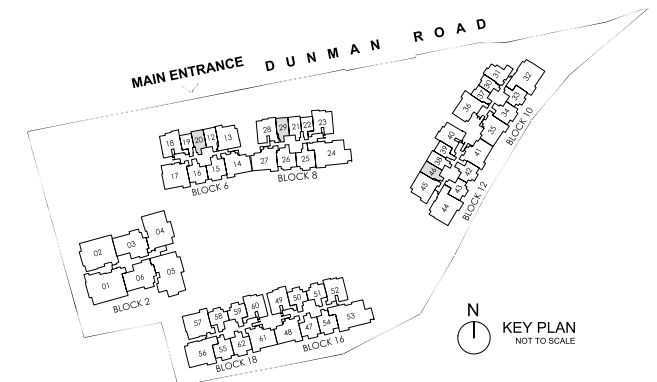
Dotted line denotes strata void complete with bulkhead at unit Type 1BR S1-H

### LEGEND:

- F FRIDGE
- WD WASHER CUM DRYER
- DB DISTRIBUTION BOARD
- ST STORE
- AC AIR-CONDITIONER
- RC REINFORCED CONCRETE (EXCLUDED FROM STRATA AREA)
- ☒ VOID SPACE (EXCLUDED FROM STRATA AREA)



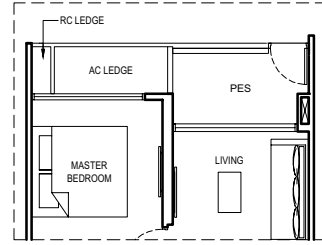
ALL PLANS ARE SUBJECT TO CHANGES BY THE RELEVANT AUTHORITIES.  
 MEASUREMENTS ARE APPROXIMATE ONLY AND SUBJECT TO FINAL SURVEY.  
 INFORMATION ACCURATE AT POINT OF PRINTING.  
 BP NO.: A1716-00003-2022-BP01 DATED 15 MAY 2023  
 BP NO.: A1716-00003-2022-BP02 DATED 16 JUNE 2023



# 1 BEDROOM + STUDY

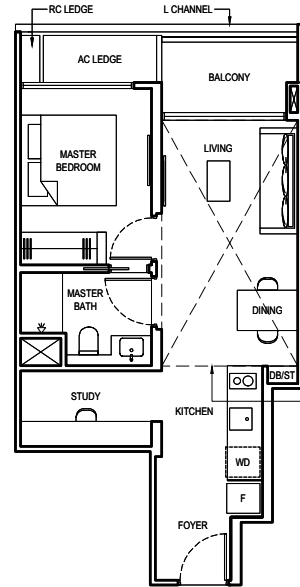
## TYPE 1BR S2-PES

51 SQM / 549 SQFT  
 (INCLUSIVE OF 5 SQM PES  
 & 2 SQM AC LEDGE)  
 BLOCK 6 #01-12  
 BLOCK 8 #01-21  
 BLOCK 12 #01-38



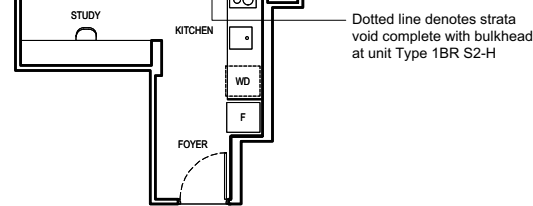
## TYPE 1BR S2

51 SQM / 549 SQFT  
 (INCLUSIVE OF 5 SQM BALCONY  
 & 2 SQM AC LEDGE)  
 BLOCK 6 #02-12 to #17-12  
 BLOCK 8 #02-21 to #17-21  
 BLOCK 12 #02-38 to #17-38



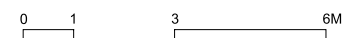
## TYPE 1BR S2-H

66 SQM / 710 SQFT  
 (INCLUSIVE OF 5 SQM BALCONY,  
 2 SQM AC LEDGE &  
 15 SQM STRATA VOID)  
 BLOCK 6 #18-12  
 BLOCK 8 #18-21  
 BLOCK 12 #18-38

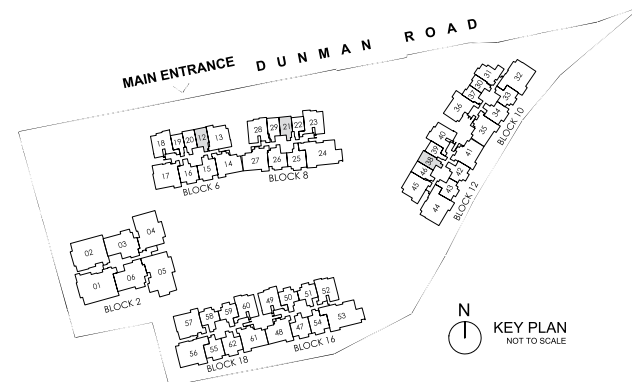


### LEGEND:

- F FRIDGE
- WD WASHER CUM DRYER
- DB DISTRIBUTION BOARD
- ST STORE
- AC AIR-CONDITIONER
- RC REINFORCED CONCRETE (EXCLUDED FROM STRATA AREA)
- ☒ VOID SPACE (EXCLUDED FROM STRATA AREA)



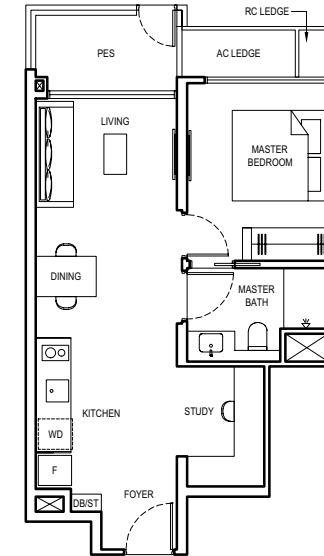
ALL PLANS ARE SUBJECT TO CHANGES BY THE RELEVANT AUTHORITIES.  
 MEASUREMENTS ARE APPROXIMATE ONLY AND SUBJECT TO FINAL SURVEY.  
 INFORMATION ACCURATE AT POINT OF PRINTING.  
 BP NO.: A1716-00003-2022-BP01 DATED 15 MAY 2023  
 BP NO.: A1716-00003-2022-BP02 DATED 16 JUNE 2023



# 1 BEDROOM + STUDY

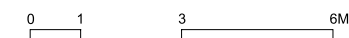
## TYPE 1BR S3-PES

55 SQM / 592 SQFT  
 (INCLUSIVE OF 5 SQM PES  
 & 2 SQM AC LEDGE)  
 BLOCK 16 #01-51  
 BLOCK 18 #01-58 (mirrored)

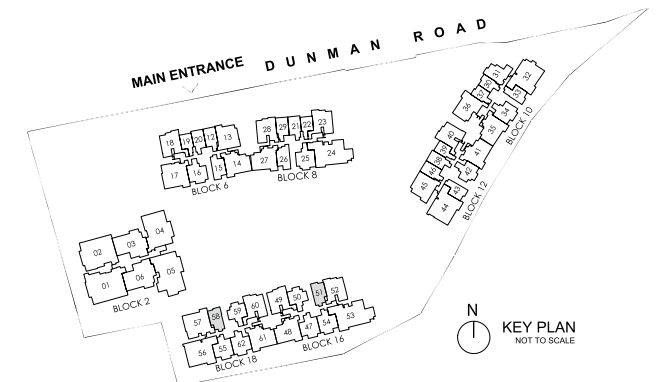


### LEGEND:

- F FRIDGE
- WD WASHER CUM DRYER
- DB DISTRIBUTION BOARD
- ST STORE
- AC AIR-CONDITIONER
- RC REINFORCED CONCRETE (EXCLUDED FROM STRATA AREA)
- ☒ VOID SPACE (EXCLUDED FROM STRATA AREA)



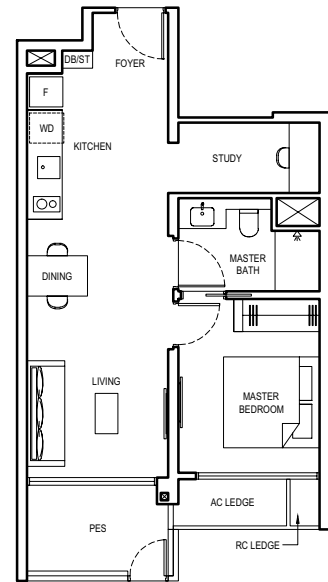
ALL PLANS ARE SUBJECT TO CHANGES BY THE RELEVANT AUTHORITIES.  
 MEASUREMENTS ARE APPROXIMATE ONLY AND SUBJECT TO FINAL SURVEY.  
 INFORMATION ACCURATE AT POINT OF PRINTING.  
 BP NO.: A1716-00003-2022-BP01 DATED 15 MAY 2023  
 BP NO.: A1716-00003-2022-BP02 DATED 16 JUNE 2023



# 1 BEDROOM + STUDY

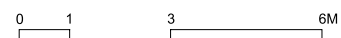
## TYPE 1BR S4-PES

56 SQM / 603 SQFT  
 (INCLUSIVE OF 6 SQM PES  
 & 2 SQM AC LEDGE)  
 BLOCK 6 #01-15

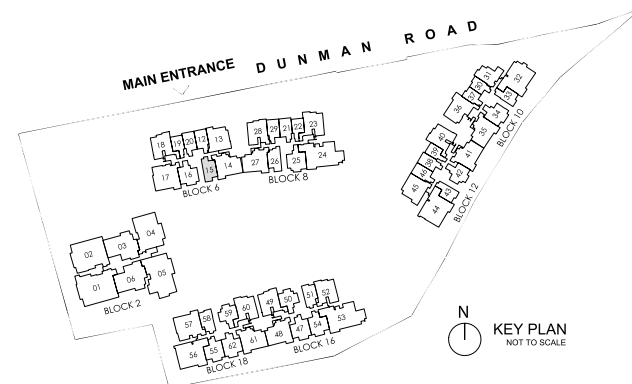


### LEGEND:

- F FRIDGE
- WD WASHER CUM DRYER
- DB DISTRIBUTION BOARD
- ST STORE
- AC AIR-CONDITIONER
- RC REINFORCED CONCRETE (EXCLUDED FROM STRATA AREA)
- ☒ VOID SPACE (EXCLUDED FROM STRATA AREA)



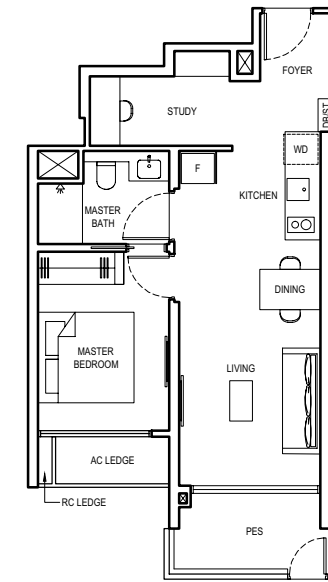
ALL PLANS ARE SUBJECT TO CHANGES BY THE RELEVANT AUTHORITIES.  
 MEASUREMENTS ARE APPROXIMATE ONLY AND SUBJECT TO FINAL SURVEY.  
 INFORMATION ACCURATE AT POINT OF PRINTING.  
 BP NO.: A1716-00003-2022-BP01 DATED 15 MAY 2023  
 BP NO.: A1716-00003-2022-BP02 DATED 16 JUNE 2023



# 1 BEDROOM + STUDY

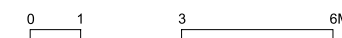
## TYPE 1BR S5-PES

55 SQM / 592 SQFT  
 (INCLUSIVE OF 6 SQM PES  
 & 3 SQM AC LEDGE)  
 BLOCK 8 #01-26

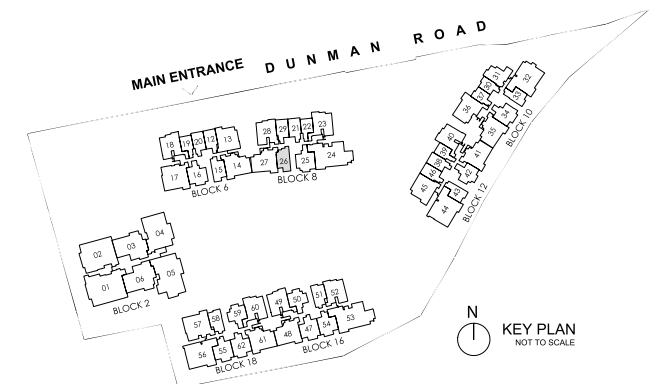


### LEGEND:

- F FRIDGE
- WD WASHER CUM DRYER
- DB DISTRIBUTION BOARD
- ST STORE
- AC AIR-CONDITIONER
- RC REINFORCED CONCRETE (EXCLUDED FROM STRATA AREA)
- ☒ VOID SPACE (EXCLUDED FROM STRATA AREA)



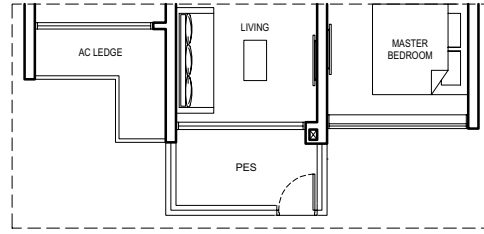
ALL PLANS ARE SUBJECT TO CHANGES BY THE RELEVANT AUTHORITIES.  
 MEASUREMENTS ARE APPROXIMATE ONLY AND SUBJECT TO FINAL SURVEY.  
 INFORMATION ACCURATE AT POINT OF PRINTING.  
 BP NO.: A1716-00003-2022-BP01 DATED 15 MAY 2023  
 BP NO.: A1716-00003-2022-BP02 DATED 16 JUNE 2023



# 2 BEDROOM

## TYPE 2BR 1-PES

62 SQM / 667 SQFT  
 (INCLUSIVE OF 5 SQM PES  
 & 4 SQM AC LEDGE)  
 BLOCK 12 #01-42  
 BLOCK 16 #01-50  
 BLOCK 18 #01-59 (mirrored)

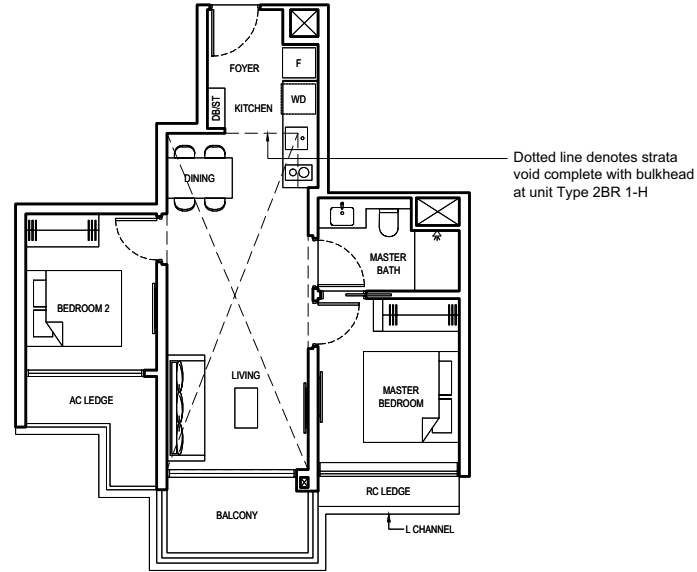


## TYPE 2BR 1

62 SQM / 667 SQFT  
 (INCLUSIVE OF 5 SQM BALCONY  
 & 4 SQM AC LEDGE)  
 BLOCK 12 #02-42 to #17-42  
 BLOCK 16 #02-50 to #17-50  
 BLOCK 18 #02-59 to #17-59 (mirrored)

## TYPE 2BR 1-H

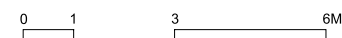
83 SQM / 893 SQFT  
 (INCLUSIVE OF 5 SQM BALCONY,  
 4 SQM AC LEDGE &  
 21 SQM STRATA VOID)  
 BLOCK 16 #18-50  
 BLOCK 18 #18-59 (mirrored)



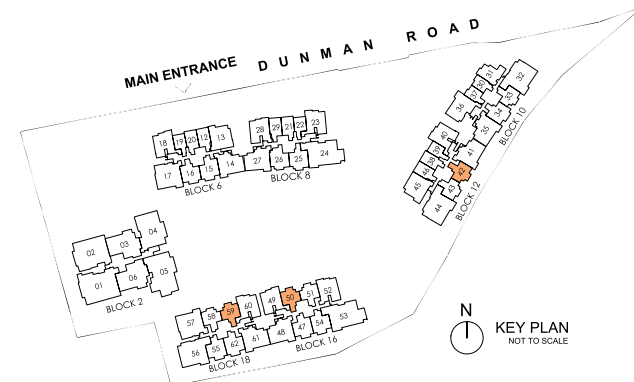
Dotted line denotes strata void complete with bulkhead at unit Type 2BR 1-H

### LEGEND:

- F FRIDGE
- WD WASHER CUM DRYER
- DB DISTRIBUTION BOARD
- ST STORE
- AC AIR-CONDITIONER
- RC REINFORCED CONCRETE (EXCLUDED FROM STRATA AREA)
- ☒ VOID SPACE (EXCLUDED FROM STRATA AREA)



ALL PLANS ARE SUBJECT TO CHANGES BY THE RELEVANT AUTHORITIES.  
 MEASUREMENTS ARE APPROXIMATE ONLY AND SUBJECT TO FINAL SURVEY.  
 INFORMATION ACCURATE AT POINT OF PRINTING.  
 BP NO.: A1716-00003-2022-BP01 DATED 15 MAY 2023  
 BP NO.: A1716-00003-2022-BP02 DATED 16 JUNE 2023



N  
 KEY PLAN  
 NOT TO SCALE

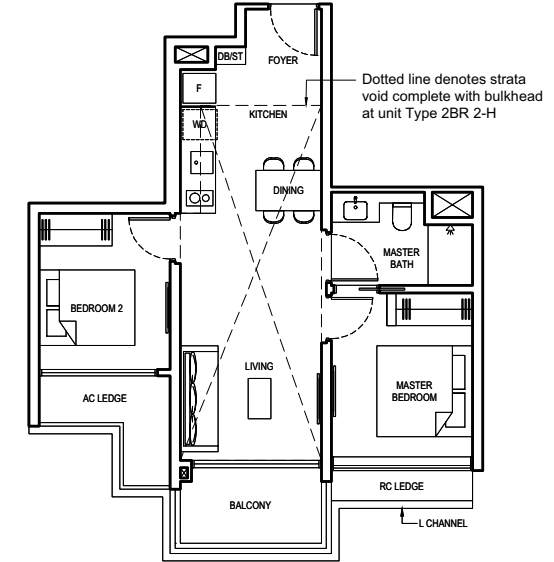
# 2 BEDROOM

## TYPE 2BR 2

62 SQM / 667 SQFT  
 (INCLUSIVE OF 5 SQM BALCONY  
 & 4 SQM AC LEDGE)  
 BLOCK 10 #02-33 to #17-33  
 BLOCK 12 #02-43 to #17-43 (mirrored)  
 BLOCK 16 #02-51 to #17-51 (mirrored)  
 BLOCK 18 #02-58 to #17-58

## TYPE 2BR 2-H

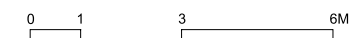
83 SQM / 893 SQFT  
 (INCLUSIVE OF 5 SQM BALCONY,  
 4 SQM AC LEDGE &  
 21 SQM STRATA VOID)  
 BLOCK 16 #18-51 (mirrored)  
 BLOCK 18 #18-58



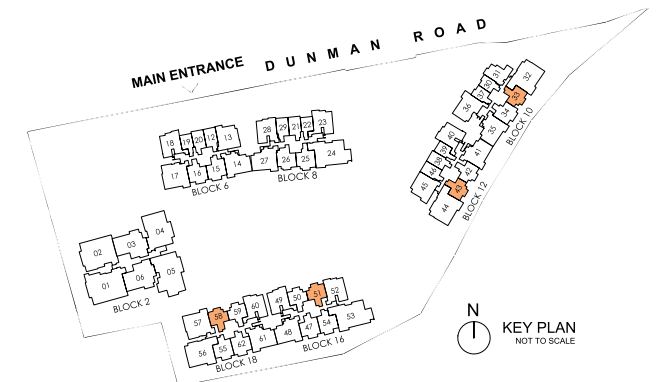
Dotted line denotes strata void complete with bulkhead at unit Type 2BR 2-H

### LEGEND:

- F FRIDGE
- WD WASHER CUM DRYER
- DB DISTRIBUTION BOARD
- ST STORE
- AC AIR-CONDITIONER
- RC REINFORCED CONCRETE (EXCLUDED FROM STRATA AREA)
- ☒ VOID SPACE (EXCLUDED FROM STRATA AREA)



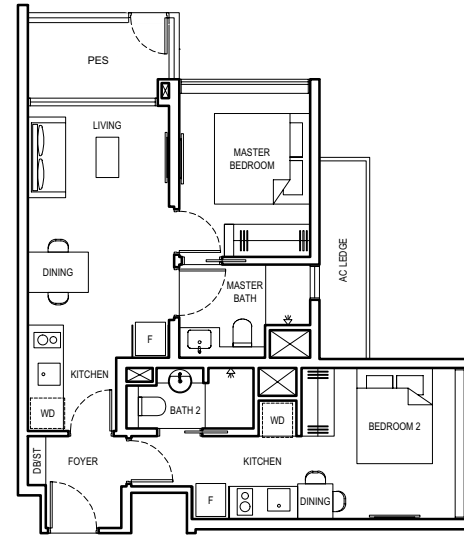
ALL PLANS ARE SUBJECT TO CHANGES BY THE RELEVANT AUTHORITIES.  
 MEASUREMENTS ARE APPROXIMATE ONLY AND SUBJECT TO FINAL SURVEY.  
 INFORMATION ACCURATE AT POINT OF PRINTING.  
 BP NO.: A1716-00003-2022-BP01 DATED 15 MAY 2023  
 BP NO.: A1716-00003-2022-BP02 DATED 16 JUNE 2023



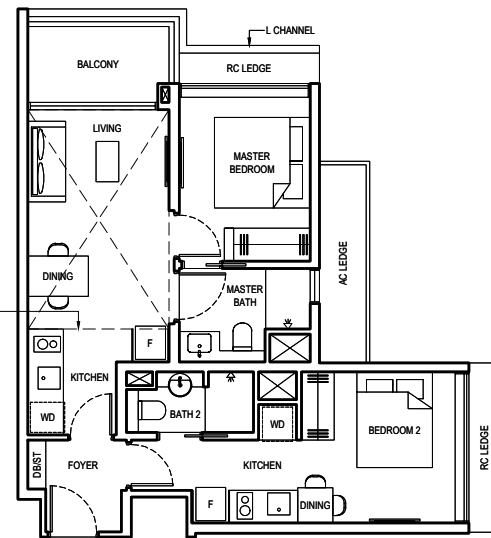
N  
 KEY PLAN  
 NOT TO SCALE

# 2 BEDROOM DUAL KEY

TYPE 2BR DK1-PES  
67 SQM / 721 SQFT  
(INCLUSIVE OF 5 SQM PES  
& 4 SQM AC LEDGE)  
BLOCK 10 #01-31



TYPE 2BR DK1  
67 SQM / 721 SQFT  
(INCLUSIVE OF 5 SQM BALCONY  
& 4 SQM AC LEDGE)  
BLOCK 10 #02-31 to #17-31



Dotted line denotes strata void complete with bulkhead at unit Type 2BR DK1-H

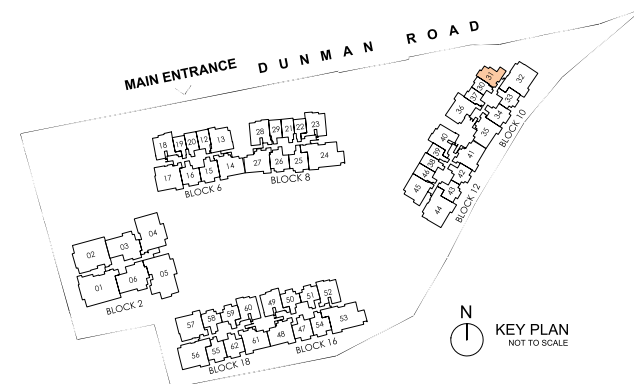
TYPE 2BR DK1-H  
81 SQM / 872 SQFT  
(INCLUSIVE OF 5 SQM BALCONY,  
4 SQM AC LEDGE  
& 14 SQM STRATA VOID)  
BLOCK 10 #18-31

## LEGEND:

- F FRIDGE
- WD WASHER CUM DRYER
- DB DISTRIBUTION BOARD
- ST STORE
- AC AIR-CONDITIONER
- RC REINFORCED CONCRETE (EXCLUDED FROM STRATA AREA)
- ☒ VOID SPACE (EXCLUDED FROM STRATA AREA)

0 1 3 6M

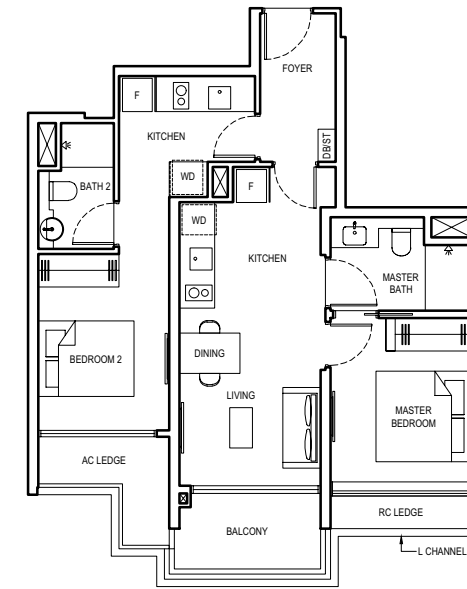
ALL PLANS ARE SUBJECT TO CHANGES BY THE RELEVANT AUTHORITIES.  
MEASUREMENTS ARE APPROXIMATE ONLY AND SUBJECT TO FINAL SURVEY.  
INFORMATION ACCURATE AT POINT OF PRINTING.  
BP NO.: A1716-00003-2022-BP01 DATED 15 MAY 2023  
BP NO.: A1716-00003-2022-BP02 DATED 16 JUNE 2023



N  
KEY PLAN  
NOT TO SCALE

# 2 BEDROOM DUAL KEY

TYPE 2BR DK2  
72 SQM / 775 SQFT  
(INCLUSIVE OF 5 SQM BALCONY  
& 4 SQM AC LEDGE)  
BLOCK 8 #02-26 to #17-26

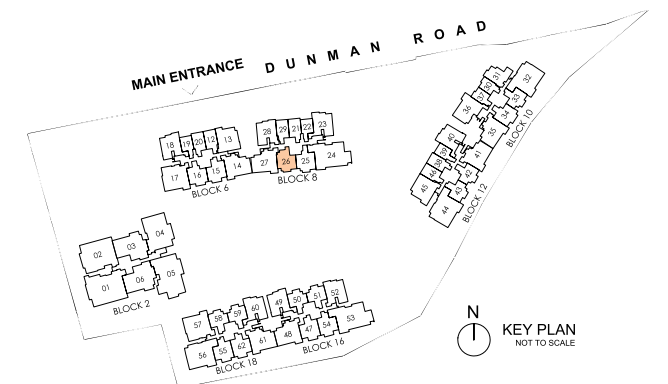


## LEGEND:

- F FRIDGE
- WD WASHER CUM DRYER
- DB DISTRIBUTION BOARD
- ST STORE
- AC AIR-CONDITIONER
- RC REINFORCED CONCRETE (EXCLUDED FROM STRATA AREA)
- ☒ VOID SPACE (EXCLUDED FROM STRATA AREA)

0 1 3 6M

ALL PLANS ARE SUBJECT TO CHANGES BY THE RELEVANT AUTHORITIES.  
MEASUREMENTS ARE APPROXIMATE ONLY AND SUBJECT TO FINAL SURVEY.  
INFORMATION ACCURATE AT POINT OF PRINTING.  
BP NO.: A1716-00003-2022-BP01 DATED 15 MAY 2023  
BP NO.: A1716-00003-2022-BP02 DATED 16 JUNE 2023

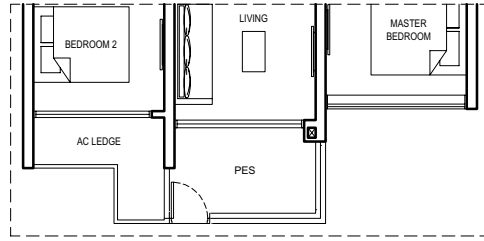


N  
KEY PLAN  
NOT TO SCALE

# 2 BEDROOM + STUDY

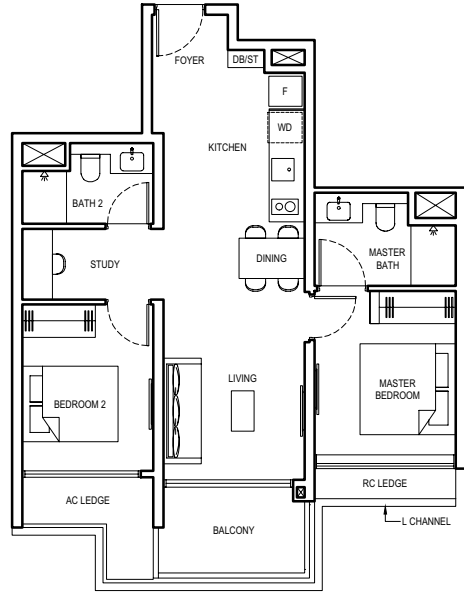
## TYPE 2BR S1-PES

72 SQM / 775 SQFT  
 (INCLUSIVE OF 6 SQM PES  
 & 4 SQM AC LEDGE)  
 BLOCK 16 #01-47 (mirrored)  
 #01-54  
 BLOCK 18 #01-55 (mirrored)  
 #01-62



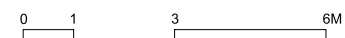
## TYPE 2BR S1

72 SQM / 775 SQFT  
 (INCLUSIVE OF 6 SQM BALCONY  
 & 4 SQM AC LEDGE)  
 BLOCK 16 #02-47 to #17-47 (mirrored)  
 #02-54 to #17-54  
 BLOCK 18 #02-55 to #17-55 (mirrored)  
 #02-62 to #17-62

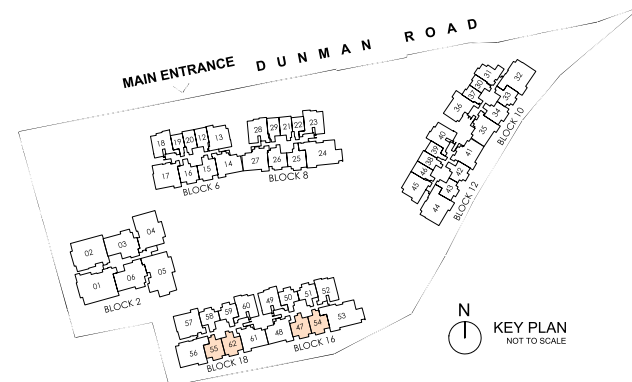


### LEGEND:

- F FRIDGE
- WD WASHER CUM DRYER
- DB DISTRIBUTION BOARD
- ST STORE
- AC AIR-CONDITIONER
- RC REINFORCED CONCRETE (EXCLUDED FROM STRATA AREA)
- ☒ VOID SPACE (EXCLUDED FROM STRATA AREA)



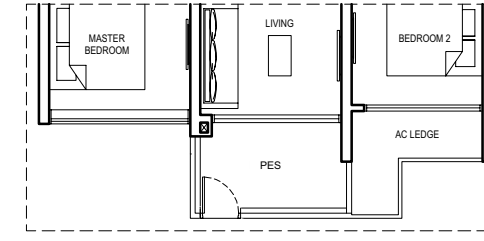
ALL PLANS ARE SUBJECT TO CHANGES BY THE RELEVANT AUTHORITIES.  
 MEASUREMENTS ARE APPROXIMATE ONLY AND SUBJECT TO FINAL SURVEY.  
 INFORMATION ACCURATE AT POINT OF PRINTING.  
 BP NO.: A1716-00003-2022-BP01 DATED 15 MAY 2023  
 BP NO.: A1716-00003-2022-BP02 DATED 16 JUNE 2023



# 2 BEDROOM + STUDY

## TYPE 2BR S2-PES

72 SQM / 775 SQFT  
 (INCLUSIVE OF 6 SQM PES  
 & 4 SQM AC LEDGE)  
 BLOCK 6 #01-16  
 BLOCK 10 #01-34

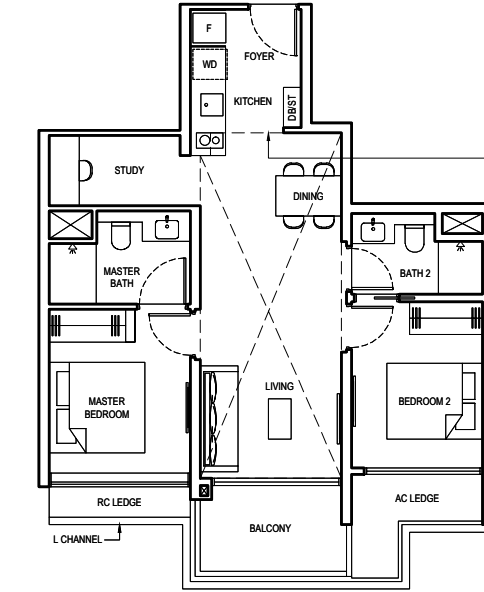


## TYPE 2BR S2

72 SQM / 775 SQFT  
 (INCLUSIVE OF 6 SQM BALCONY  
 & 4 SQM AC LEDGE)  
 BLOCK 6 #02-16 to #17-16  
 BLOCK 10 #02-34 to #17-34

## TYPE 2BR S2-H

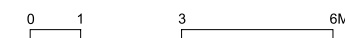
93 SQM / 1001 SQFT  
 (INCLUSIVE OF 6 SQM BALCONY,  
 4 SQM AC LEDGE &  
 21 SQM STRATA VOID)  
 BLOCK 6 #18-16



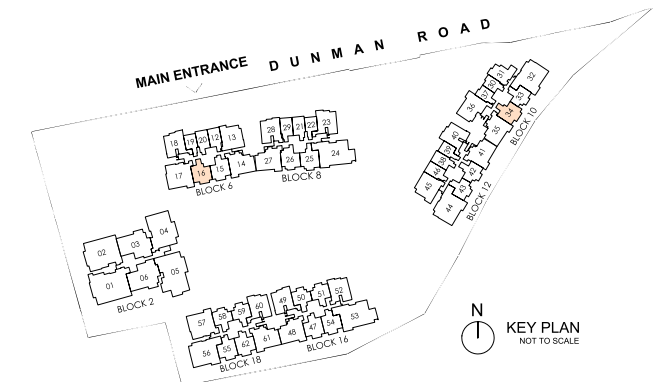
Dotted line denotes strata void complete with bulkhead at unit Type 2BR S2-H

### LEGEND:

- F FRIDGE
- WD WASHER CUM DRYER
- DB DISTRIBUTION BOARD
- ST STORE
- AC AIR-CONDITIONER
- RC REINFORCED CONCRETE (EXCLUDED FROM STRATA AREA)
- ☒ VOID SPACE (EXCLUDED FROM STRATA AREA)



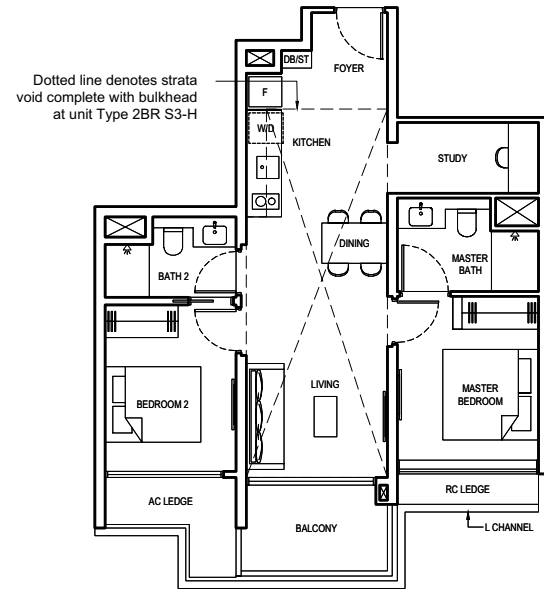
ALL PLANS ARE SUBJECT TO CHANGES BY THE RELEVANT AUTHORITIES.  
 MEASUREMENTS ARE APPROXIMATE ONLY AND SUBJECT TO FINAL SURVEY.  
 INFORMATION ACCURATE AT POINT OF PRINTING.  
 BP NO.: A1716-00003-2022-BP01 DATED 15 MAY 2023  
 BP NO.: A1716-00003-2022-BP02 DATED 16 JUNE 2023



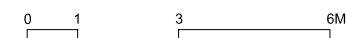
# 2 BEDROOM + STUDY

**TYPE 2BR S3**  
 72 SQM / 775 SQFT  
 (INCLUSIVE OF 6 SQM BALCONY  
 & 4 SQM AC LEDGE)  
 BLOCK 6 #02-15 to #17-15

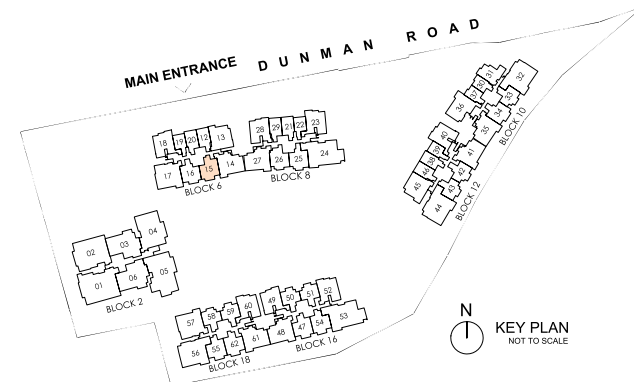
**TYPE 2BR S3-H**  
 94 SQM / 1012 SQFT  
 (INCLUSIVE OF 6 SQM BALCONY,  
 4 SQM AC LEDGE & 22 SQM STRATA VOID)  
 BLOCK 6 #18-15



- LEGEND:
- F FRIDGE
  - WD WASHER CUM DRYER
  - DB DISTRIBUTION BOARD
  - ST STORE
  - AC AIR-CONDITIONER
  - RC REINFORCED CONCRETE (EXCLUDED FROM STRATA AREA)
  - ☒ VOID SPACE (EXCLUDED FROM STRATA AREA)

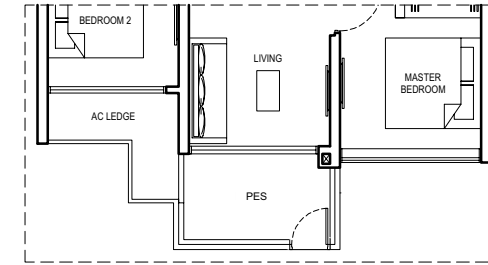


ALL PLANS ARE SUBJECT TO CHANGES BY THE RELEVANT AUTHORITIES.  
 MEASUREMENTS ARE APPROXIMATE ONLY AND SUBJECT TO FINAL SURVEY.  
 INFORMATION ACCURATE AT POINT OF PRINTING.  
 BP NO.: A1716-00003-2022-BP01 DATED 15 MAY 2023  
 BP NO.: A1716-00003-2022-BP02 DATED 16 JUNE 2023

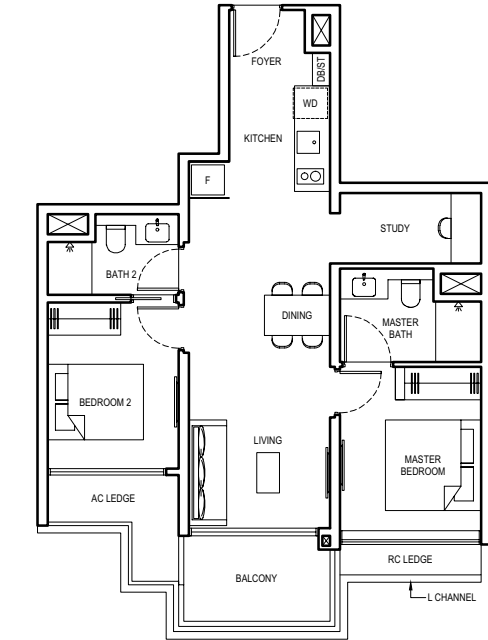


# 2 BEDROOM + STUDY

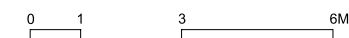
**TYPE 2BR S4-PES**  
 74 SQM / 797 SQFT  
 (INCLUSIVE OF 6 SQM PES  
 & 4 SQM AC LEDGE)  
 BLOCK 8 #01-25



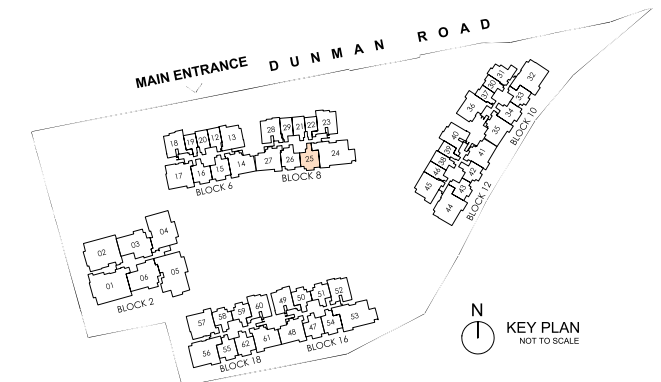
**TYPE 2BR S4**  
 74 SQM / 797 SQFT  
 (INCLUSIVE OF 6 SQM BALCONY  
 & 4 SQM AC LEDGE)  
 BLOCK 8 #02-25 to #17-25



- LEGEND:
- F FRIDGE
  - WD WASHER CUM DRYER
  - DB DISTRIBUTION BOARD
  - ST STORE
  - AC AIR-CONDITIONER
  - RC REINFORCED CONCRETE (EXCLUDED FROM STRATA AREA)
  - ☒ VOID SPACE (EXCLUDED FROM STRATA AREA)



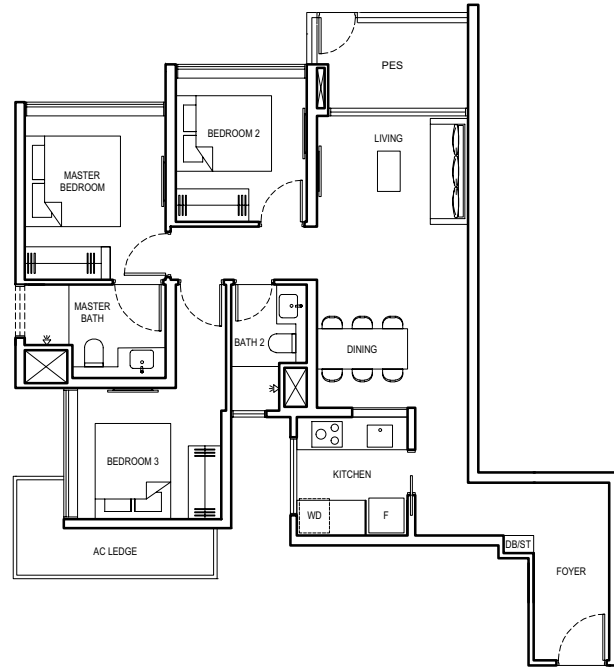
ALL PLANS ARE SUBJECT TO CHANGES BY THE RELEVANT AUTHORITIES.  
 MEASUREMENTS ARE APPROXIMATE ONLY AND SUBJECT TO FINAL SURVEY.  
 INFORMATION ACCURATE AT POINT OF PRINTING.  
 BP NO.: A1716-00003-2022-BP01 DATED 15 MAY 2023  
 BP NO.: A1716-00003-2022-BP02 DATED 16 JUNE 2023



# 3 BEDROOM

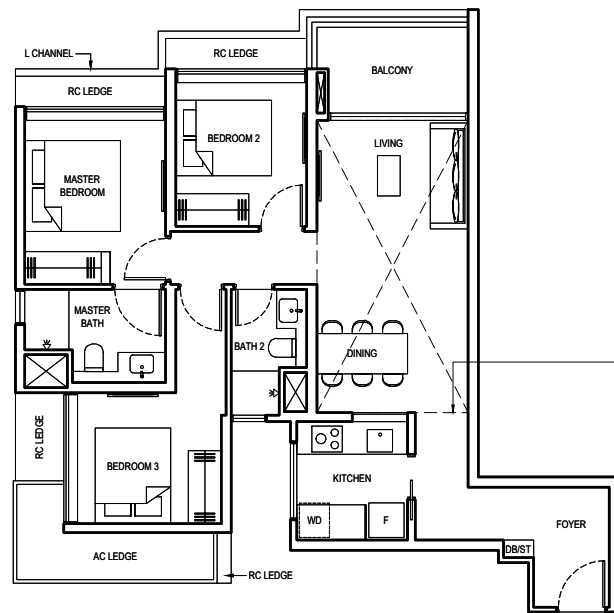
## TYPE 3BR 1-PES

91 SQM / 980 SQFT  
(INCLUSIVE OF 6 SQM PES  
& 5 SQM AC LEDGE)  
BLOCK 6 #01-18  
BLOCK 8 #01-23 (mirrored)  
BLOCK 12 #01-40 (mirrored)  
BLOCK 16 #01-49  
BLOCK 18 #01-60 (mirrored)



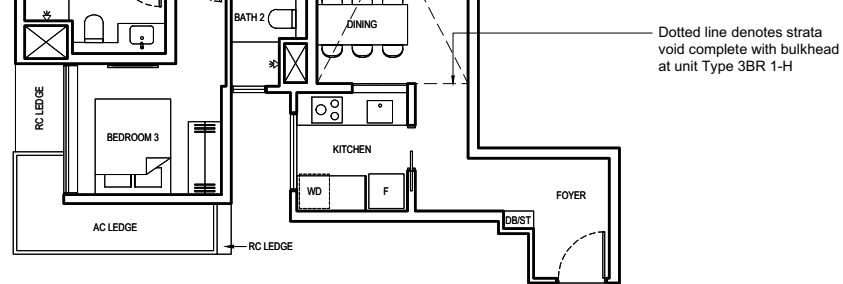
## TYPE 3BR 1

89 SQM / 958 SQFT  
(INCLUSIVE OF 6 SQM BALCONY  
& 5 SQM AC LEDGE)  
BLOCK 6 #02-18 to #17-18  
BLOCK 8 #02-23 to #17-23 (mirrored)  
BLOCK 12 #02-40 to #17-40 (mirrored)  
BLOCK 16 #02-49 to #17-49  
BLOCK 18 #02-60 to #17-60 (mirrored)



## TYPE 3BR 1-H

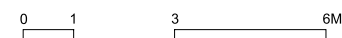
108 SQM / 1163 SQFT  
(INCLUSIVE OF 6 SQM BALCONY,  
5 SQM AC LEDGE &  
19 SQM STRATA VOID)  
BLOCK 6 #18-18  
BLOCK 8 #18-23 (mirrored)  
BLOCK 12 #18-40 (mirrored)  
BLOCK 16 #18-49  
BLOCK 18 #18-60 (mirrored)



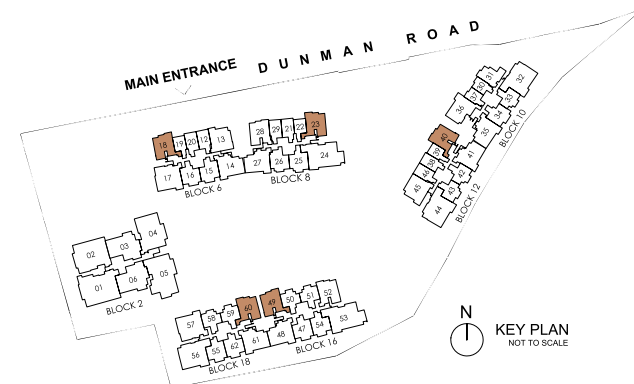
Dotted line denotes strata void complete with bulkhead at unit Type 3BR 1-H

### LEGEND:

- F FRIDGE
- WD WASHER CUM DRYER
- DB DISTRIBUTION BOARD
- ST STORE
- AC AIR-CONDITIONER
- RC REINFORCED CONCRETE (EXCLUDED FROM STRATA AREA)
- ☒ VOID SPACE (EXCLUDED FROM STRATA AREA)



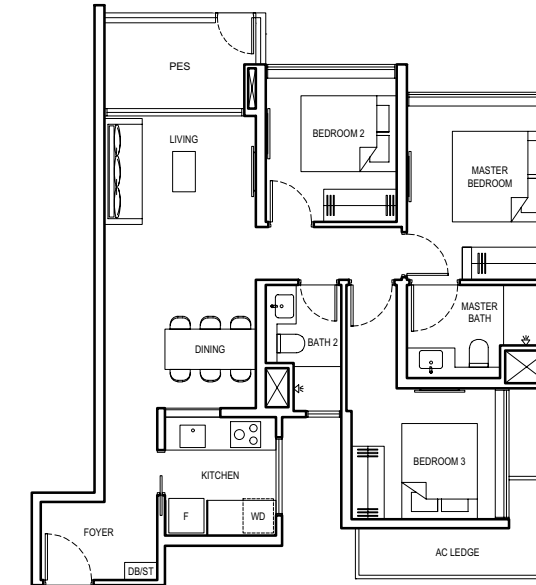
ALL PLANS ARE SUBJECT TO CHANGES BY THE RELEVANT AUTHORITIES.  
MEASUREMENTS ARE APPROXIMATE ONLY AND SUBJECT TO FINAL SURVEY.  
INFORMATION ACCURATE AT POINT OF PRINTING.  
BP NO.: A1716-00003-2022-BP01 DATED 15 MAY 2023  
BP NO.: A1716-00003-2022-BP02 DATED 16 JUNE 2023



# 3 BEDROOM

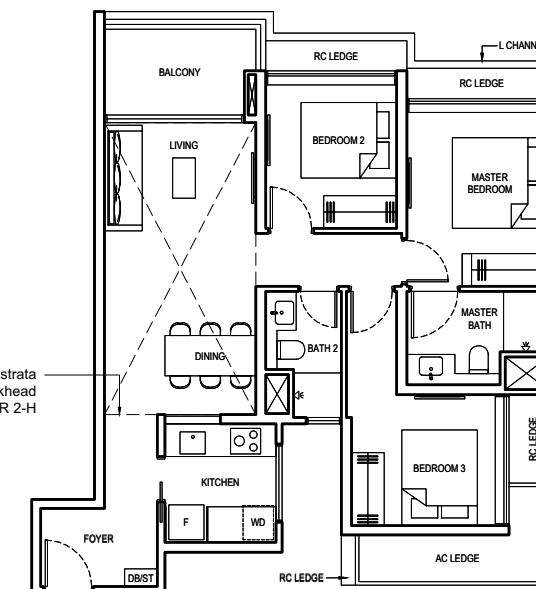
## TYPE 3BR 2-PES

87 SQM / 936 SQFT  
(INCLUSIVE OF 6 SQM PES  
& 5 SQM AC LEDGE)  
BLOCK 16 #01-52



## TYPE 3BR 2

87 SQM / 936 SQFT  
(INCLUSIVE OF 6 SQM BALCONY  
& 5 SQM AC LEDGE)  
BLOCK 16 #02-52 to #17-52



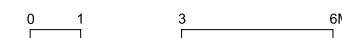
## TYPE 3BR 2-H

106 SQM / 1141 SQFT  
(INCLUSIVE OF 6 SQM BALCONY,  
5 SQM AC LEDGE &  
19 SQM STRATA VOID)  
BLOCK 16 #18-52

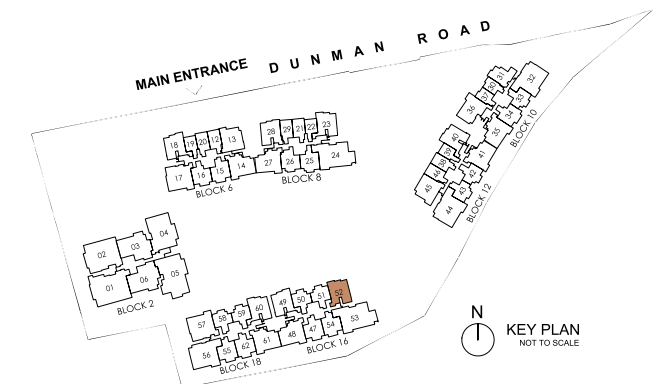
Dotted line denotes strata void complete with bulkhead at unit Type 3BR 2-H

### LEGEND:

- F FRIDGE
- WD WASHER CUM DRYER
- DB DISTRIBUTION BOARD
- ST STORE
- AC AIR-CONDITIONER
- RC REINFORCED CONCRETE (EXCLUDED FROM STRATA AREA)
- ☒ VOID SPACE (EXCLUDED FROM STRATA AREA)

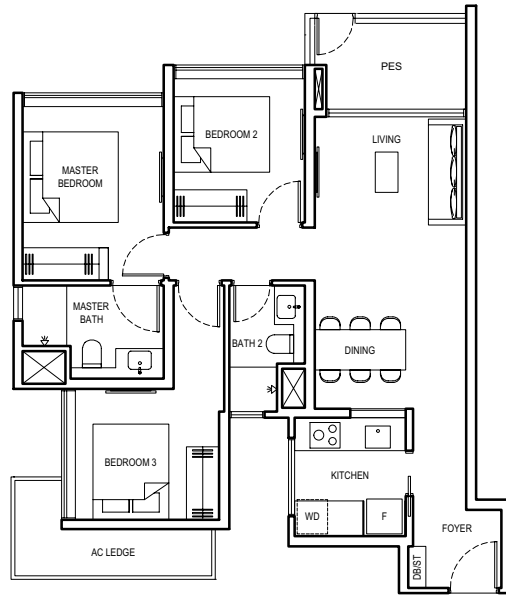


ALL PLANS ARE SUBJECT TO CHANGES BY THE RELEVANT AUTHORITIES.  
MEASUREMENTS ARE APPROXIMATE ONLY AND SUBJECT TO FINAL SURVEY.  
INFORMATION ACCURATE AT POINT OF PRINTING.  
BP NO.: A1716-00003-2022-BP01 DATED 15 MAY 2023  
BP NO.: A1716-00003-2022-BP02 DATED 16 JUNE 2023

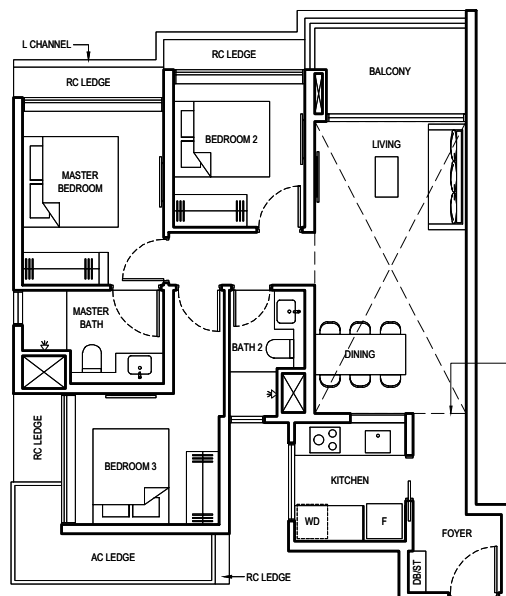


# 3 BEDROOM

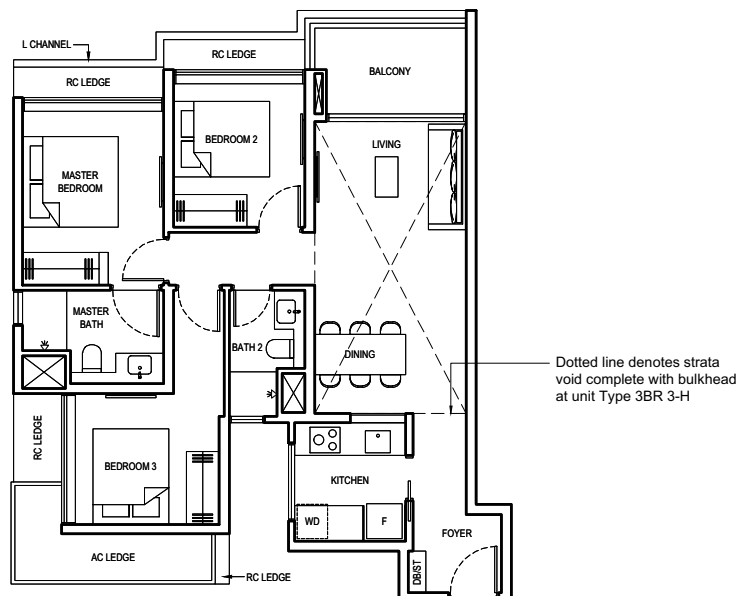
**TYPE 3BR 3-PES**  
 86 SQM / 926 SQFT  
 (INCLUSIVE OF 6 SQM PES  
 & 5 SQM AC LEDGE)  
 BLOCK 8 #01-28



**TYPE 3BR 3**  
 86 SQM / 926 SQFT  
 (INCLUSIVE OF 6 SQM BALCONY  
 & 5 SQM AC LEDGE)  
 BLOCK 8 #02-28 to #17-28



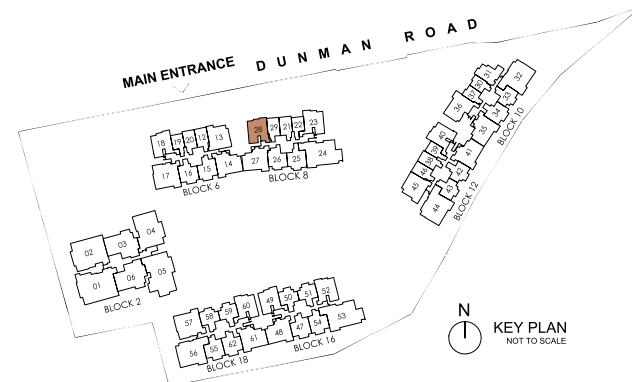
**TYPE 3BR 3-H**  
 105 SQM / 1130 SQFT  
 (INCLUSIVE OF 6 SQM BALCONY,  
 5 SQM AC LEDGE &  
 19 SQM STRATA VOID)  
 BLOCK 8 #18-28



- LEGEND:
- F FRIDGE
  - WD WASHER CUM DRYER
  - DB DISTRIBUTION BOARD
  - ST STORE
  - AC AIR-CONDITIONER
  - RC REINFORCED CONCRETE (EXCLUDED FROM STRATA AREA)
  - ☒ VOID SPACE (EXCLUDED FROM STRATA AREA)

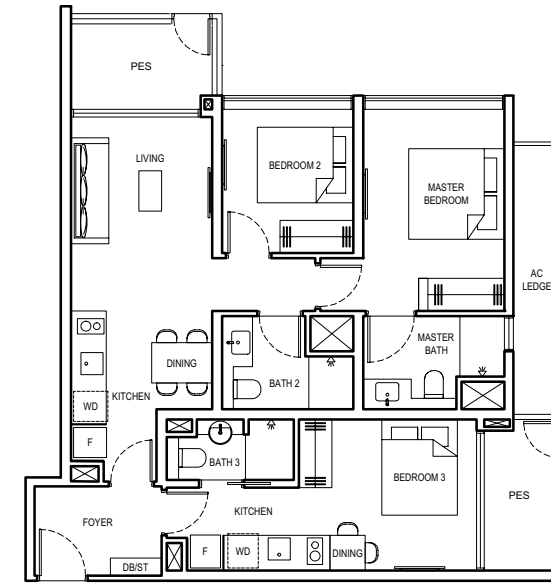
0 1 3 6M

ALL PLANS ARE SUBJECT TO CHANGES BY THE RELEVANT AUTHORITIES.  
 MEASUREMENTS ARE APPROXIMATE ONLY AND SUBJECT TO FINAL SURVEY.  
 INFORMATION ACCURATE AT POINT OF PRINTING.  
 BP NO.: A1716-00003-2022-BP01 DATED 15 MAY 2023  
 BP NO.: A1716-00003-2022-BP02 DATED 16 JUNE 2023

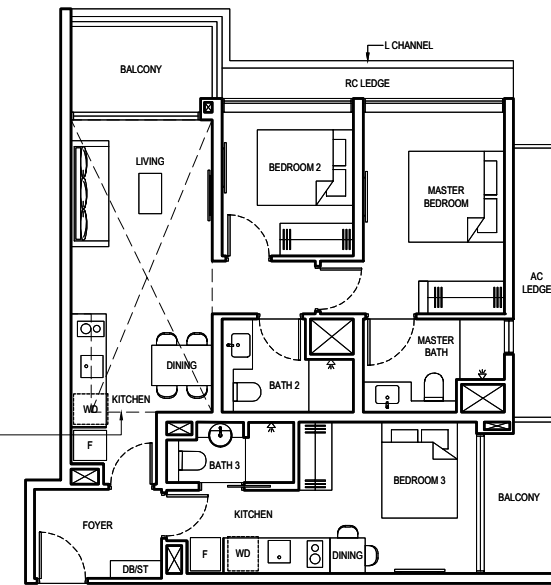


# 3 BEDROOM DUAL KEY

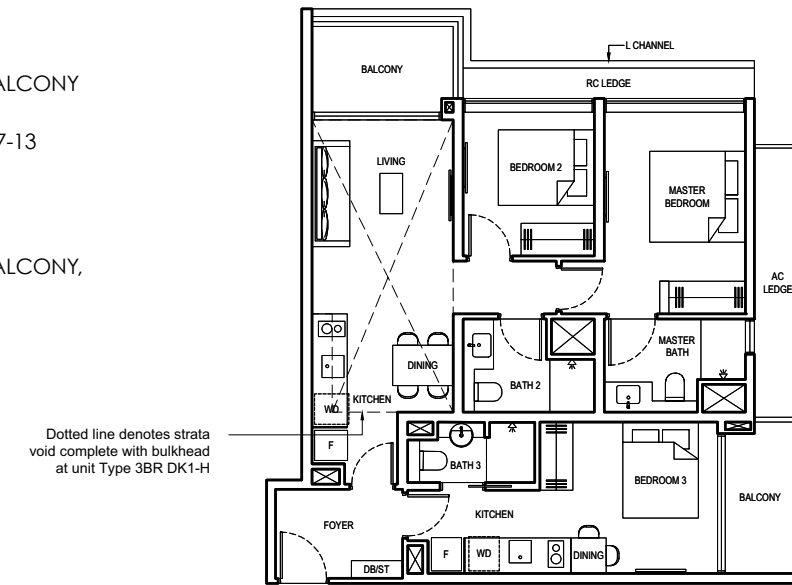
**TYPE 3BR DK1-PES**  
 97 SQM / 1044 SQFT  
 (INCLUSIVE OF 11 SQM PES  
 & 6 SQM AC LEDGE)  
 BLOCK 6 #01-13



**TYPE 3BR DK1**  
 97 SQM / 1044 SQFT  
 (INCLUSIVE OF 11 SQM BALCONY  
 & 6 SQM AC LEDGE)  
 BLOCK 6 #02-13 to #17-13



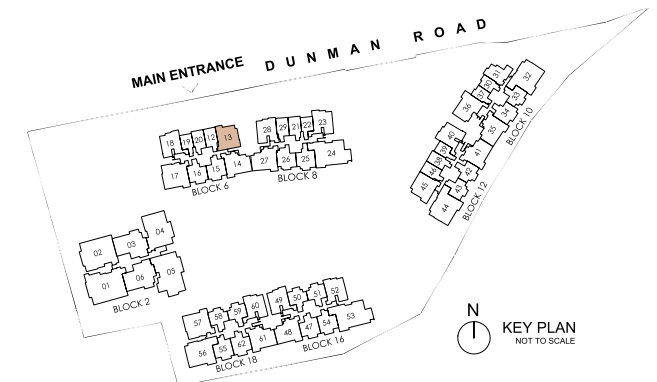
**TYPE 3BR DK1-H**  
 114 SQM / 1227 SQFT  
 (INCLUSIVE OF 11 SQM BALCONY,  
 6 SQM AC LEDGE &  
 17 SQM STRATA VOID)  
 BLOCK 6 #18-13



- LEGEND:
- F FRIDGE
  - WD WASHER CUM DRYER
  - DB DISTRIBUTION BOARD
  - ST STORE
  - AC AIR-CONDITIONER
  - RC REINFORCED CONCRETE (EXCLUDED FROM STRATA AREA)
  - ☒ VOID SPACE (EXCLUDED FROM STRATA AREA)

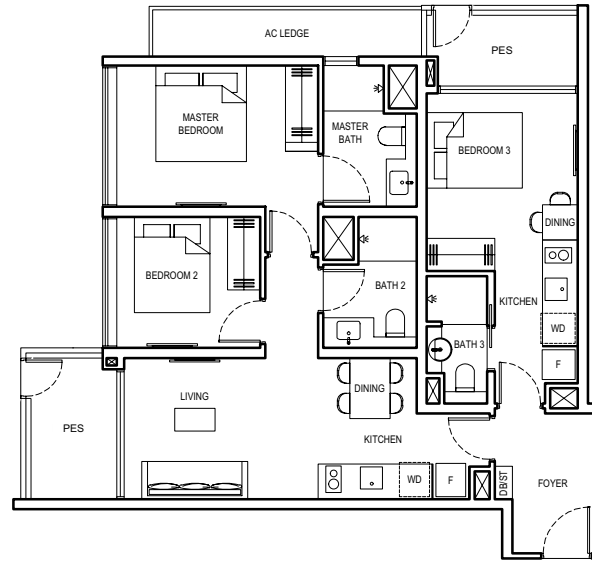
0 1 3 6M

ALL PLANS ARE SUBJECT TO CHANGES BY THE RELEVANT AUTHORITIES.  
 MEASUREMENTS ARE APPROXIMATE ONLY AND SUBJECT TO FINAL SURVEY.  
 INFORMATION ACCURATE AT POINT OF PRINTING.  
 BP NO.: A1716-00003-2022-BP01 DATED 15 MAY 2023  
 BP NO.: A1716-00003-2022-BP02 DATED 16 JUNE 2023

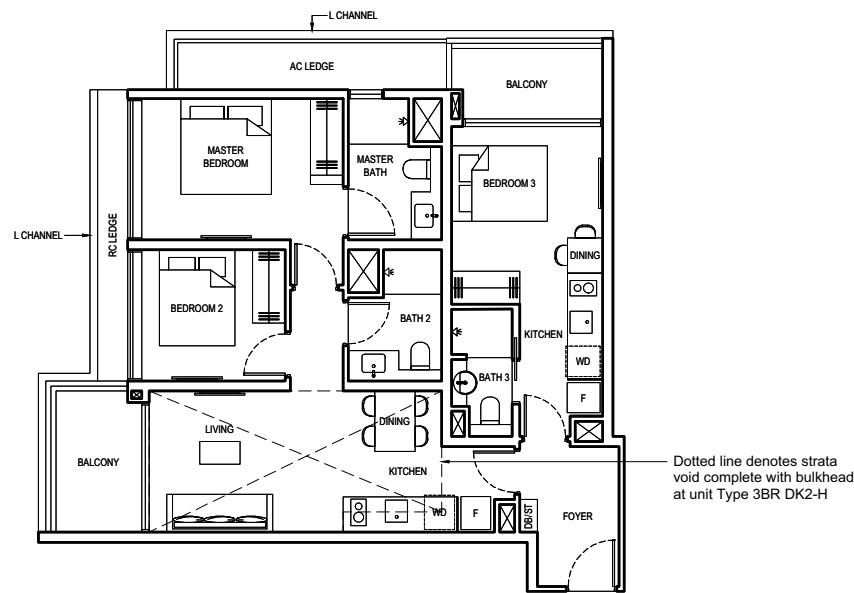


# 3 BEDROOM DUAL KEY

**TYPE 3BR DK2-PES**  
 98 SQM / 1055 SQFT  
 (INCLUSIVE OF 11 SQM PES  
 & 6 SQM AC LEDGE)  
 BLOCK 12 #01-45



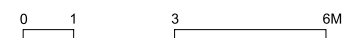
**TYPE 3BR DK2**  
 98 SQM / 1055 SQFT  
 (INCLUSIVE OF 11 SQM BALCONY  
 & 6 SQM AC LEDGE)  
 BLOCK 12 #02-45 to #17-45



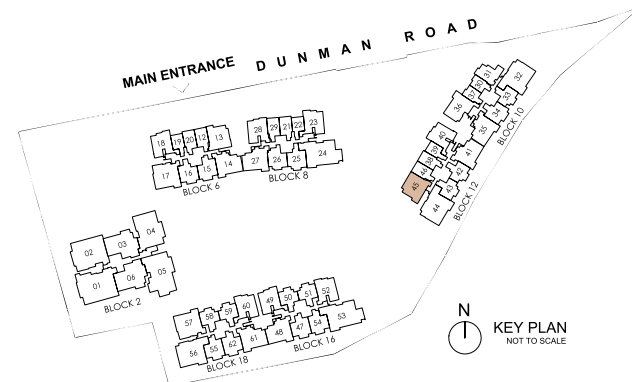
**TYPE 3BR DK2-H**  
 115 SQM / 1238 SQFT  
 (INCLUSIVE OF 11 SQM BALCONY,  
 6 SQM AC LEDGE &  
 17 SQM STRATA VOID)  
 BLOCK 12 #18-45

Dotted line denotes strata void complete with bulkhead at unit Type 3BR DK2-H

- LEGEND:
- F FRIDGE
  - WD WASHER CUM DRYER
  - DB DISTRIBUTION BOARD
  - ST STORE
  - AC AIR-CONDITIONER
  - RC REINFORCED CONCRETE (EXCLUDED FROM STRATA AREA)
  - ☒ VOID SPACE (EXCLUDED FROM STRATA AREA)

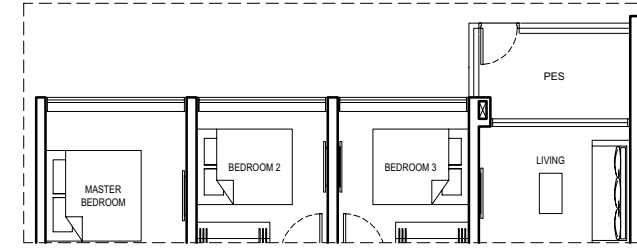


ALL PLANS ARE SUBJECT TO CHANGES BY THE RELEVANT AUTHORITIES. MEASUREMENTS ARE APPROXIMATE ONLY AND SUBJECT TO FINAL SURVEY. INFORMATION ACCURATE AT POINT OF PRINTING.  
 BP NO.: A1716-00003-2022-BP01 DATED 15 MAY 2023  
 BP NO.: A1716-00003-2022-BP02 DATED 16 JUNE 2023

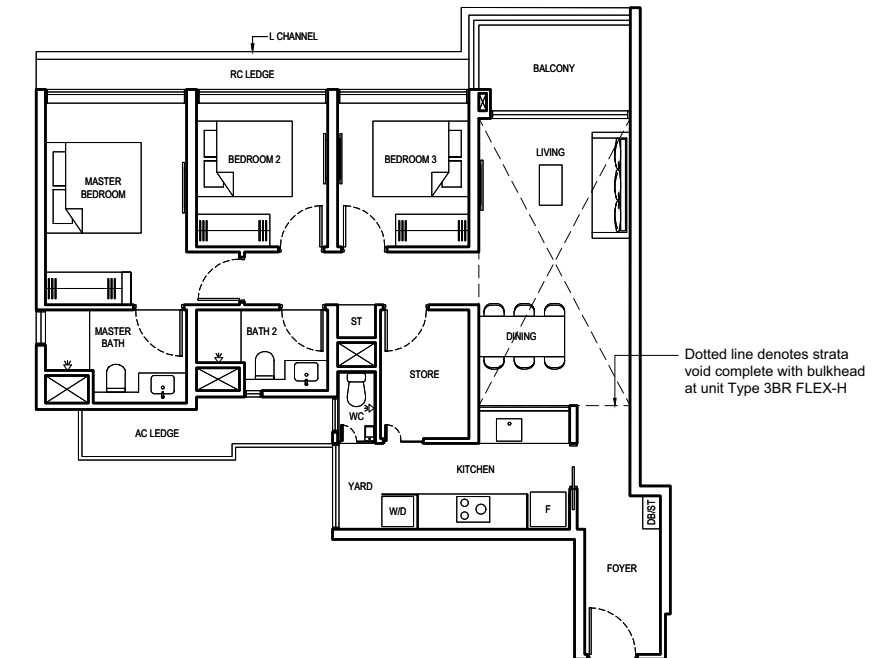


# 3 BEDROOM FLEX

**TYPE 3BR FLEX-PES**  
 102 SQM / 1098 SQFT  
 (INCLUSIVE OF 6 SQM PES  
 & 6 SQM AC LEDGE)  
 BLOCK 10 #01-36



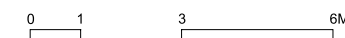
**TYPE 3BR FLEX**  
 102 SQM / 1098 SQFT  
 (INCLUSIVE OF 6 SQM BALCONY  
 & 6 SQM AC LEDGE)  
 BLOCK 10 #02-36 to #17-36



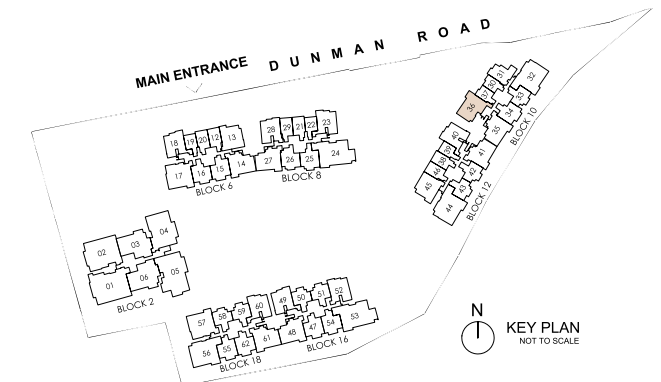
Dotted line denotes strata void complete with bulkhead at unit Type 3BR FLEX-H

**TYPE 3BR FLEX-H**  
 121 SQM / 1302 SQFT  
 (INCLUSIVE OF 6 SQM BALCONY,  
 6 SQM AC LEDGE &  
 19 SQM STRATA VOID)  
 BLOCK 10 #18-36

- LEGEND:
- F FRIDGE
  - W/D WASHER AND DRYER
  - DB DISTRIBUTION BOARD
  - ST STORE
  - WC WATER CLOSET
  - AC AIR-CONDITIONER
  - RC REINFORCED CONCRETE (EXCLUDED FROM STRATA AREA)
  - ☒ VOID SPACE (EXCLUDED FROM STRATA AREA)



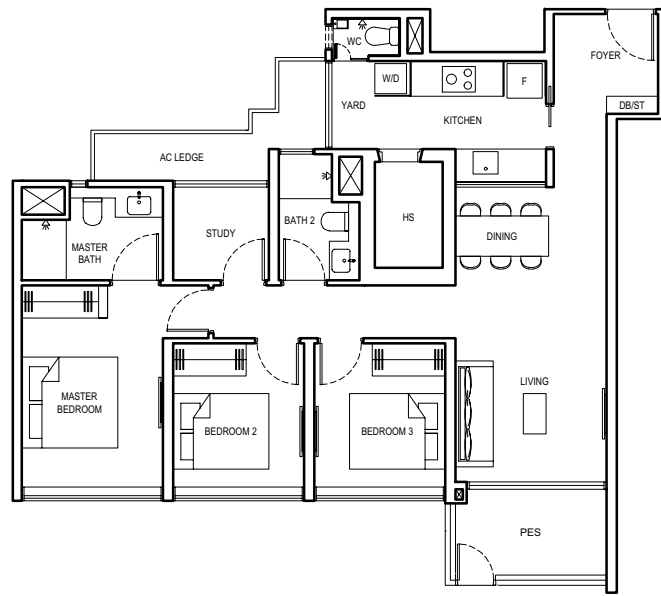
ALL PLANS ARE SUBJECT TO CHANGES BY THE RELEVANT AUTHORITIES. MEASUREMENTS ARE APPROXIMATE ONLY AND SUBJECT TO FINAL SURVEY. INFORMATION ACCURATE AT POINT OF PRINTING.  
 BP NO.: A1716-00003-2022-BP01 DATED 15 MAY 2023  
 BP NO.: A1716-00003-2022-BP02 DATED 16 JUNE 2023



# 3 BEDROOM + STUDY (LUXURY)

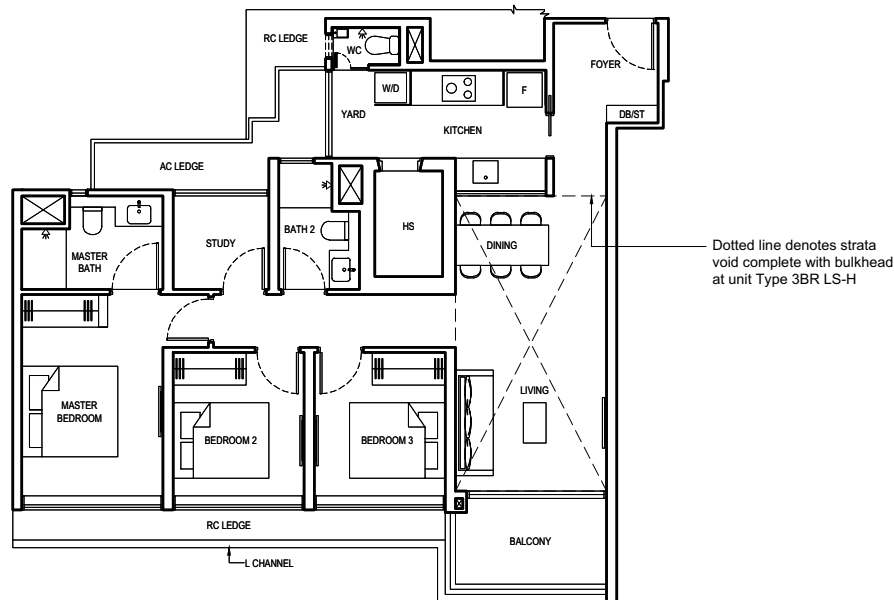
## TYPE 3BR LS-PES

104 SQM / 1119 SQFT  
(INCLUSIVE OF 6 SQM PES  
& 6 SQM AC LEDGE)  
BLOCK 6 #01-14 (mirrored)  
BLOCK 8 #01-27  
BLOCK 10 #01-35  
BLOCK 12 #01-41 (mirrored)  
BLOCK 16 #01-48  
BLOCK 18 #01-61 (mirrored)



## TYPE 3BR LS

104 SQM / 1119 SQFT  
(INCLUSIVE OF 6 SQM BALCONY  
& 6 SQM AC LEDGE)  
BLOCK 6 #02-14 to #17-14 (mirrored)  
BLOCK 8 #02-27 to #17-27  
BLOCK 10 #02-35 to #17-35  
BLOCK 12 #02-41 to #17-41 (mirrored)  
BLOCK 16 #02-48 to #17-48  
BLOCK 18 #02-61 to #17-61 (mirrored)

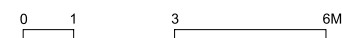


## TYPE 3BR LS-H

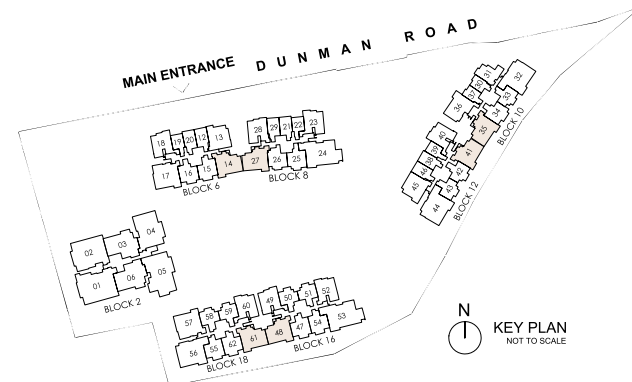
124 SQM / 1335 SQFT  
(INCLUSIVE OF 6 SQM BALCONY,  
6 SQM AC LEDGE &  
20 SQM STRATA VOID)  
BLOCK 6 #18-14 (mirrored)

### LEGEND:

- F FRIDGE
- W/D WASHER AND DRYER
- DB DISTRIBUTION BOARD
- ST STORE
- WC WATER CLOSET
- HS HOUSEHOLD SHELTER
- AC AIR-CONDITIONER
- RC REINFORCED CONCRETE (EXCLUDED FROM STRATA AREA)
- ☒ VOID SPACE (EXCLUDED FROM STRATA AREA)



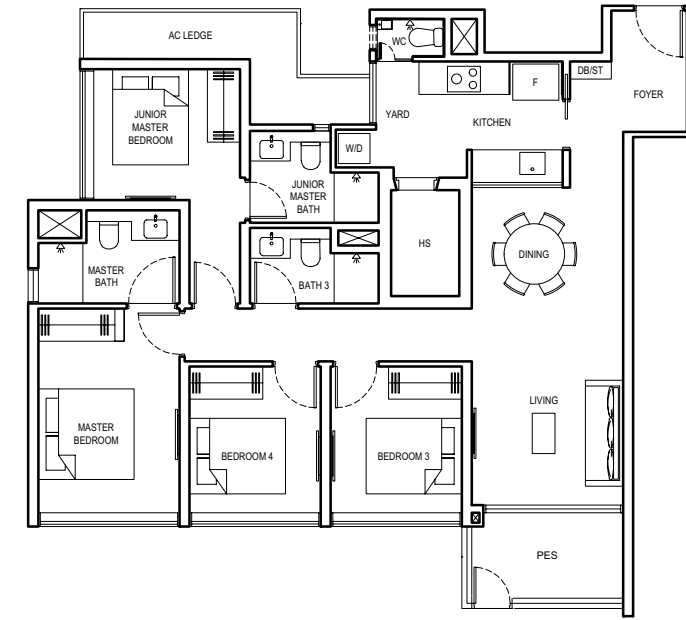
ALL PLANS ARE SUBJECT TO CHANGES BY THE RELEVANT AUTHORITIES.  
MEASUREMENTS ARE APPROXIMATE ONLY AND SUBJECT TO FINAL SURVEY.  
INFORMATION ACCURATE AT POINT OF PRINTING.  
BP NO.: A1716-00003-2022-BP01 DATED 15 MAY 2023  
BP NO.: A1716-00003-2022-BP02 DATED 16 JUNE 2023



# 4 BEDROOM

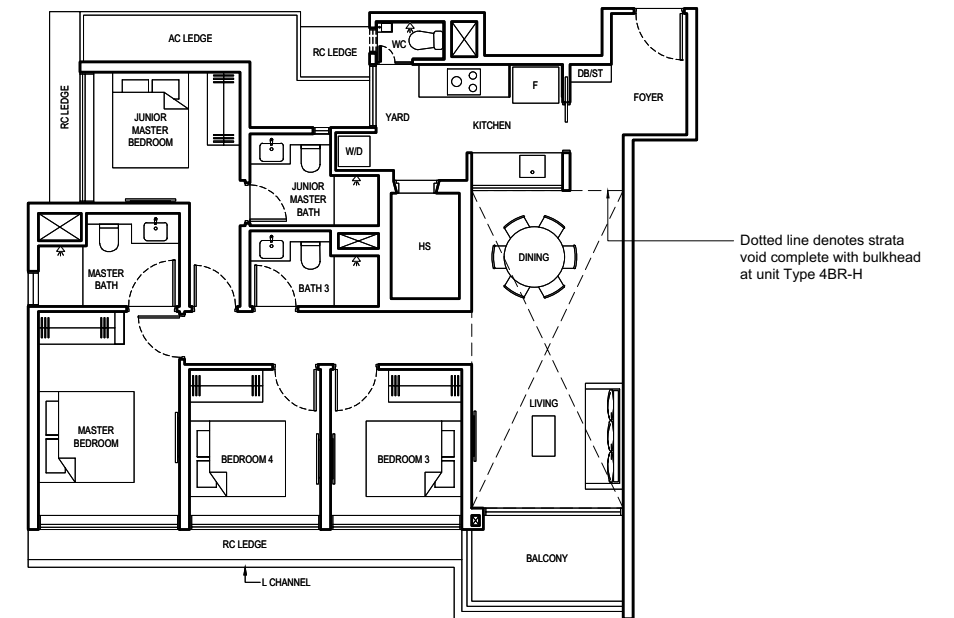
## TYPE 4BR-PES

120 SQM / 1292 SQFT  
(INCLUSIVE OF 6 SQM PES  
& 8 SQM AC LEDGE)  
BLOCK 6 #01-17  
BLOCK 18 #01-57 (mirrored)



## TYPE 4BR

120 SQM / 1292 SQFT  
(INCLUSIVE OF 6 SQM BALCONY  
& 8 SQM AC LEDGE)  
BLOCK 6 #02-17 to #17-17  
BLOCK 18 #02-57 to #17-57 (mirrored)

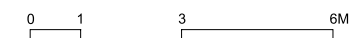


## TYPE 4BR-H

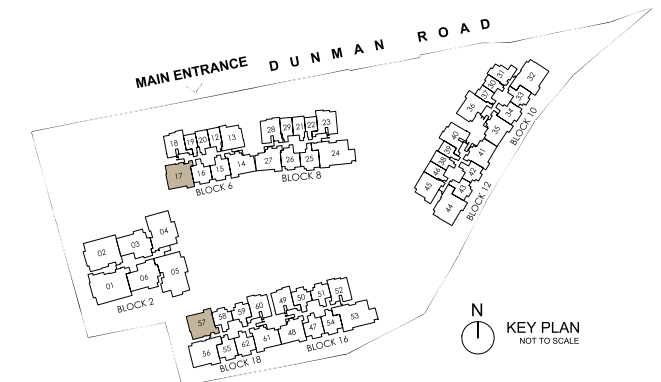
141 SQM / 1518 SQFT  
(INCLUSIVE OF 6 SQM BALCONY,  
8 SQM AC LEDGE &  
21 SQM STRATA VOID)  
BLOCK 6 #18-17  
BLOCK 18 #18-57 (mirrored)

### LEGEND:

- F FRIDGE
- W/D WASHER AND DRYER
- DB DISTRIBUTION BOARD
- ST STORE
- WC WATER CLOSET
- HS HOUSEHOLD SHELTER
- AC AIR-CONDITIONER
- RC REINFORCED CONCRETE (EXCLUDED FROM STRATA AREA)
- ☒ VOID SPACE (EXCLUDED FROM STRATA AREA)

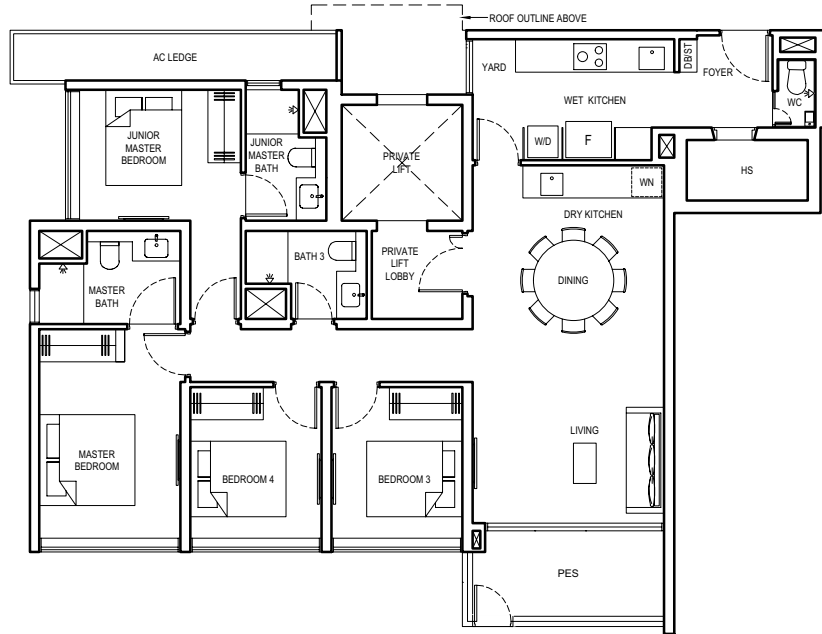


ALL PLANS ARE SUBJECT TO CHANGES BY THE RELEVANT AUTHORITIES.  
MEASUREMENTS ARE APPROXIMATE ONLY AND SUBJECT TO FINAL SURVEY.  
INFORMATION ACCURATE AT POINT OF PRINTING.  
BP NO.: A1716-00003-2022-BP01 DATED 15 MAY 2023  
BP NO.: A1716-00003-2022-BP02 DATED 16 JUNE 2023

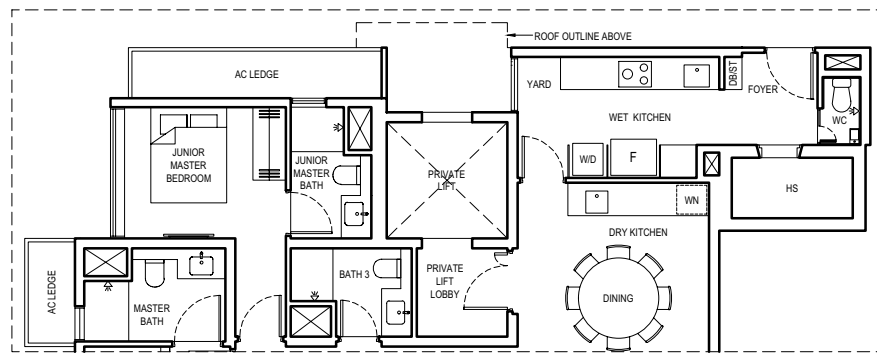


# 4 BEDROOM (LUXURY)

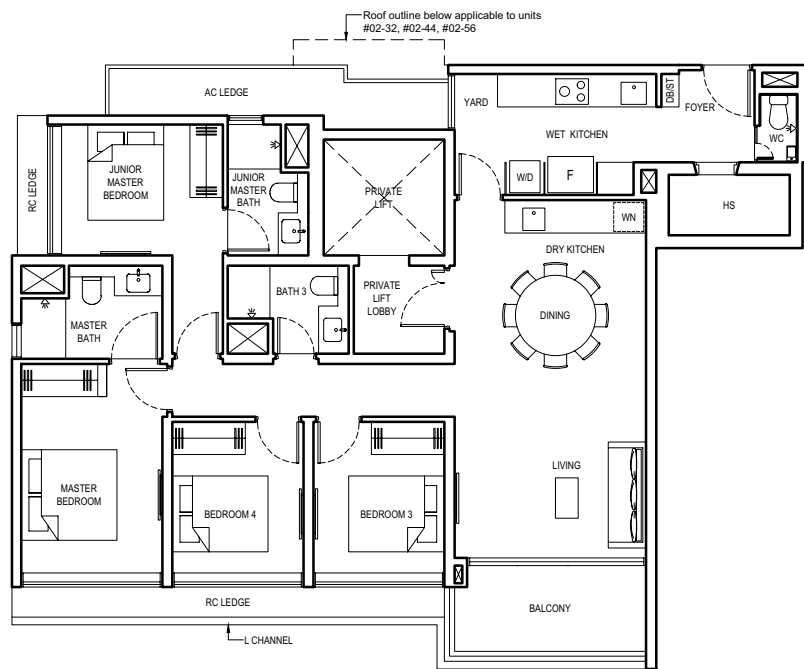
**TYPE 4BR L-PES1**  
 132 SQM / 1421 SQFT  
 (INCLUSIVE OF 8 SQM PES,  
 7 SQM AC LEDGE &  
 4 SQM PRIVATE LIFT LOBBY)  
 BLOCK 12 #01-44  
 BLOCK 18 #01-56



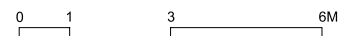
**TYPE 4BR L-PES2**  
 133 SQM / 1432 SQFT  
 (INCLUSIVE OF 8 SQM PES,  
 8 SQM AC LEDGE &  
 4 SQM PRIVATE LIFT LOBBY)  
 BLOCK 10 #01-32 (mirrored)



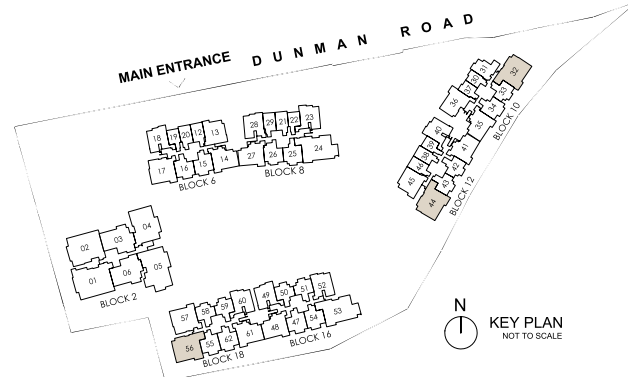
**TYPE 4BR L**  
 133 SQM / 1432 SQFT  
 (INCLUSIVE OF 8 SQM BALCONY,  
 8 SQM AC LEDGE &  
 4 SQM PRIVATE LIFT LOBBY)  
 BLOCK 10 #02-32 to #17-32 (mirrored)  
 BLOCK 12 #02-44 to #17-44  
 BLOCK 18 #02-56 to #17-56



- LEGEND:
- F FRIDGE
  - W/D WASHER AND DRYER
  - DB DISTRIBUTION BOARD
  - ST STORE
  - WC WATER CLOSET
  - HS HOUSEHOLD SHELTER
  - WN WINE CHILLER
  - AC AIR-CONDITIONER
  - RC REINFORCED CONCRETE (EXCLUDED FROM STRATA AREA)
  - ☒ VOID SPACE (EXCLUDED FROM STRATA AREA)

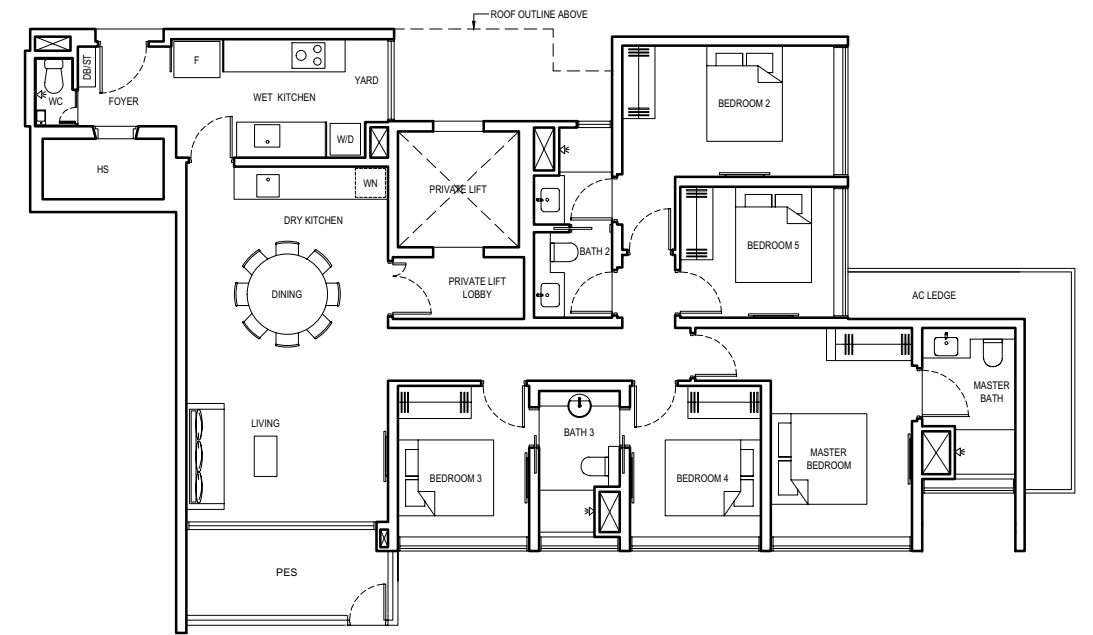


ALL PLANS ARE SUBJECT TO CHANGES BY THE RELEVANT AUTHORITIES.  
 MEASUREMENTS ARE APPROXIMATE ONLY AND SUBJECT TO FINAL SURVEY.  
 INFORMATION ACCURATE AT POINT OF PRINTING.  
 BP NO.: A1716-00003-2022-BP01 DATED 15 MAY 2023  
 BP NO.: A1716-00003-2022-BP02 DATED 16 JUNE 2023

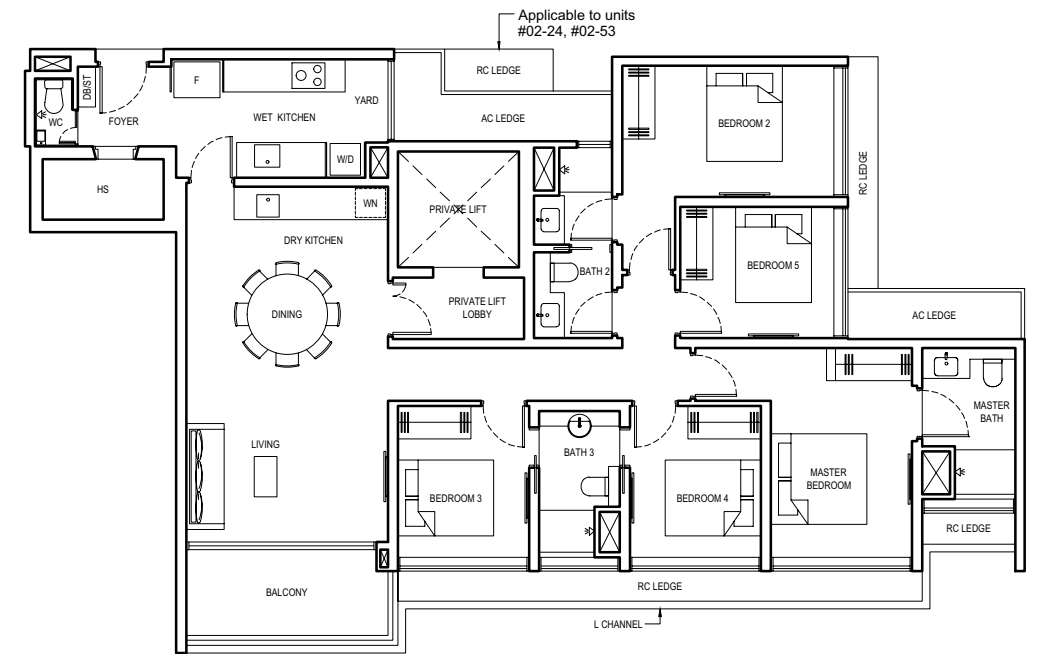


# 5 BEDROOM (LUXURY)

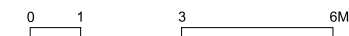
**TYPE 5BR L-PES**  
 156 SQM / 1679 SQFT  
 (INCLUSIVE OF 8 SQM PES,  
 8 SQM AC LEDGE &  
 4 SQM PRIVATE LIFT LOBBY)  
 BLOCK 8 #01-24  
 BLOCK 16 #01-53



**TYPE 5BR L**  
 157 SQM / 1690 SQFT  
 (INCLUSIVE OF 8 SQM BALCONY,  
 9 SQM AC LEDGE &  
 4 SQM PRIVATE LIFT LOBBY)  
 BLOCK 8 #02-24 to #17-24  
 BLOCK 16 #02-53 to #17-53



- LEGEND:
- F FRIDGE
  - W/D WASHER AND DRYER
  - DB DISTRIBUTION BOARD
  - ST STORE
  - WC WATER CLOSET
  - HS HOUSEHOLD SHELTER
  - WN WINE CHILLER
  - AC AIR-CONDITIONER
  - RC REINFORCED CONCRETE (EXCLUDED FROM STRATA AREA)
  - ☒ VOID SPACE (EXCLUDED FROM STRATA AREA)



ALL PLANS ARE SUBJECT TO CHANGES BY THE RELEVANT AUTHORITIES.  
 MEASUREMENTS ARE APPROXIMATE ONLY AND SUBJECT TO FINAL SURVEY.  
 INFORMATION ACCURATE AT POINT OF PRINTING.  
 BP NO.: A1716-00003-2022-BP01 DATED 15 MAY 2023  
 BP NO.: A1716-00003-2022-BP02 DATED 16 JUNE 2023

