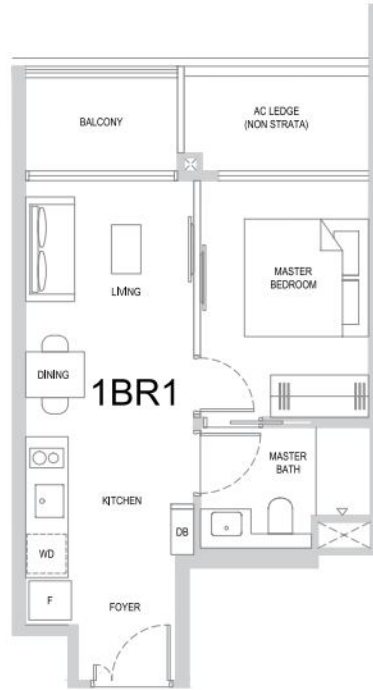


1-BEDROOM

TYPE 1BR1
40 sqm / 431 sqft

#02-07 to #30-07



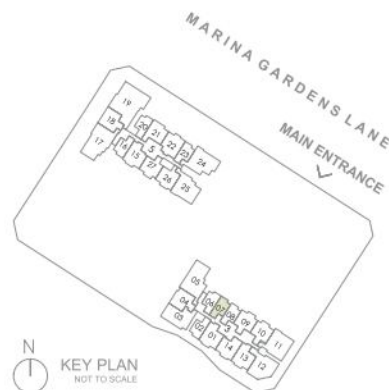
BP NO. :
A1805-00010-2023-BP01 dated 14 Dec 2024
A1805-00010-2023-BP02 dated 24 Feb 2025



- Legend
- F Fridge
 - WD Washer cum Dryer
 - DB Distribution Board
 - AC LEDGE Air-Conditioner Ledge (Excluded from Strata Area)
 - ⊠ Void Space/Rainwater Down Pipe (Excluded from Strata Area)

Wall not allowed to be hacked or altered (including by way of drilling)

Areas include balcony, where applicable. All AC ledges and RC ledges are excluded from strata area. All RC ledges are non-load bearing. The plans are subjected to change as may be required by relevant authorities. All areas and measurements stated herein as approximate and subject to final survey.



1-BEDROOM

TYPE 1BR2
40 sqm / 431 sqft

#02-06 to #30-06



BP NO. :
A1805-00010-2023-BP01 dated 14 Dec 2024
A1805-00010-2023-BP02 dated 24 Feb 2025



- Legend
- F Fridge
 - WD Washer cum Dryer
 - DB Distribution Board
 - AC LEDGE Air-Conditioner Ledge (Excluded from Strata Area)
 - RC LEDGE Reinforced Concrete Ledge (Excluded from Strata Area)
 - ⊠ Void Space/Rainwater Down Pipe (Excluded from Strata Area)

Wall not allowed to be hacked or altered (including by way of drilling)

Areas include balcony, where applicable. All AC ledges and RC ledges are excluded from strata area. All RC ledges are non-load bearing. The plans are subjected to change as may be required by relevant authorities. All areas and measurements stated herein as approximate and subject to final survey.



1-BEDROOM

TYPE 1BR3
40 sqm / 431 sqft

#02-08 to #30-08



BP NO. :
A1805-00010-2023-BP01 dated 14 Dec 2024
A1805-00010-2023-BP02 dated 24 Feb 2025



- Legend
- F Fridge
 - WD Washer cum Dryer
 - DB Distribution Board
 - AC LEDGE Air-Conditioner Ledge (Excluded from Strata Area)
 - ⊠ Void Space/Rainwater Down Pipe (Excluded from Strata Area)

Wall not allowed to be hacked or altered (including by way of drilling)

Areas include balcony, where applicable. All AC ledges and RC ledges are excluded from strata area. All RC ledges are non-load bearing. The plans are subjected to change as may be required by relevant authorities. All areas and measurements stated herein as approximate and subject to final survey.

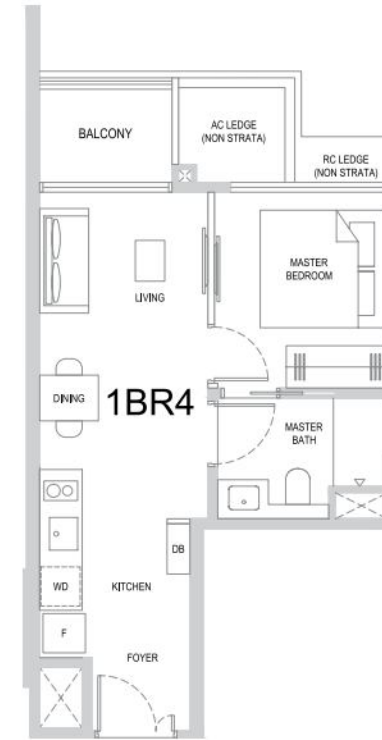


N
KEY PLAN
NOT TO SCALE

1-BEDROOM

TYPE 1BR4
39 sqm / 420 sqft

#02-02 to #30-02



BP NO. :
A1805-00010-2023-BP01 dated 14 Dec 2024
A1805-00010-2023-BP02 dated 24 Feb 2025



- Legend
- F Fridge
 - WD Washer cum Dryer
 - DB Distribution Board
 - AC LEDGE Air-Conditioner Ledge (Excluded from Strata Area)
 - RC LEDGE Reinforced Concrete Ledge (Excluded from Strata Area)
 - ⊠ Void Space/Rainwater Down Pipe (Excluded from Strata Area)

Wall not allowed to be hacked or altered (including by way of drilling)

Areas include balcony, where applicable. All AC ledges and RC ledges are excluded from strata area. All RC ledges are non-load bearing. The plans are subjected to change as may be required by relevant authorities. All areas and measurements stated herein as approximate and subject to final survey.



N
KEY PLAN
NOT TO SCALE

1-BEDROOM

TYPE 1BR5

42 sqm / 452 sqft

#02-27



BP NO. :
 A1805-00010-2023-BP01 dated 14 Dec 2024
 A1805-00010-2023-BP02 dated 24 Feb 2025



- Legend
- F Fridge
 - WD Washer cum Dryer
 - DB Distribution Board
 - AC LEDGE Air-Conditioner Ledge (Excluded from Strata Area)
 - ⊠ Void Space/Rainwater Down Pipe (Excluded from Strata Area)

Wall not allowed to be hacked or altered (including by way of drilling)

Areas include balcony, where applicable. All AC ledges and RC ledges are excluded from strata area. All RC ledges are non-load bearing. The plans are subjected to change as may be required by relevant authorities. All areas and measurements stated herein as approximate and subject to final survey.



1-BEDROOM

TYPE 1BR6

40 sqm / 431 sqft

#03-23 to #13-23
 #15-23 to #33-23
 #35-23 to #44-23



TYPE 1BR6 - PES

40 sqm / 431 sqft

#02-23

BP NO. :
 A1805-00010-2023-BP01 dated 14 Dec 2024
 A1805-00010-2023-BP02 dated 24 Feb 2025



- Legend
- F Fridge
 - WD Washer cum Dryer
 - DB Distribution Board
 - AC LEDGE Air-Conditioner Ledge (Excluded from Strata Area)
 - ⊠ Void Space/Rainwater Down Pipe (Excluded from Strata Area)

Wall not allowed to be hacked or altered (including by way of drilling)

Areas include balcony, where applicable. All AC ledges and RC ledges are excluded from strata area. All RC ledges are non-load bearing. The plans are subjected to change as may be required by relevant authorities. All areas and measurements stated herein as approximate and subject to final survey.



1-BEDROOM

TYPE 1BR7

39 sqm / 420 sqft

#03-20 to #13-20
#15-20 to #33-20
#35-20 to #44-20



TYPE 1BR7 - PES

39 sqm / 420 sqft

#02-20



BP NO. :
A1805-00010-2023-BP01 dated 14 Dec 2024
A1805-00010-2023-BP02 dated 24 Feb 2025



- Legend
- F Fridge
 - WD Washer cum Dryer
 - DB Distribution Board
 - AC LEDGE Air-Conditioner Ledge (Excluded from Strata Area)
 - RC LEDGE Reinforced Concrete Ledge (Excluded from Strata Area)
 - ⊗ Void Space/Rainwater Down Pipe (Excluded from Strata Area)

Wall not allowed to be hacked or altered (including by way of drilling)

Areas include balcony, where applicable. All AC ledges and RC ledges are excluded from strata area. All RC ledges are non-load bearing. The plans are subjected to change as may be required by relevant authorities. All areas and measurements stated herein as approximate and subject to final survey.



1-BEDROOM

TYPE 1BR8

40 sqm / 431 sqft

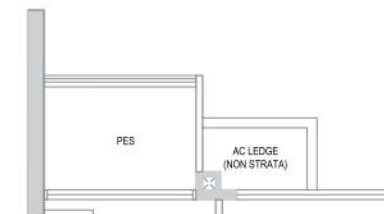
#03-16 to #13-16
#15-16 to #33-16
#35-16 to #44-16



TYPE 1BR8 - PES

40 sqm / 431 sqft

#02-16



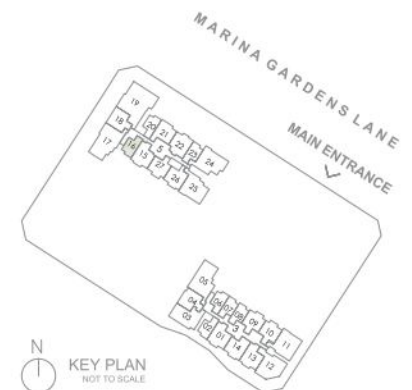
BP NO. :
A1805-00010-2023-BP01 dated 14 Dec 2024
A1805-00010-2023-BP02 dated 24 Feb 2025



- Legend
- F Fridge
 - WD Washer cum Dryer
 - DB Distribution Board
 - AC LEDGE Air-Conditioner Ledge (Excluded from Strata Area)
 - RC LEDGE Reinforced Concrete Ledge (Excluded from Strata Area)
 - ⊗ Void Space/Rainwater Down Pipe (Excluded from Strata Area)

Wall not allowed to be hacked or altered (including by way of drilling)

Areas include balcony, where applicable. All AC ledges and RC ledges are excluded from strata area. All RC ledges are non-load bearing. The plans are subjected to change as may be required by relevant authorities. All areas and measurements stated herein as approximate and subject to final survey.

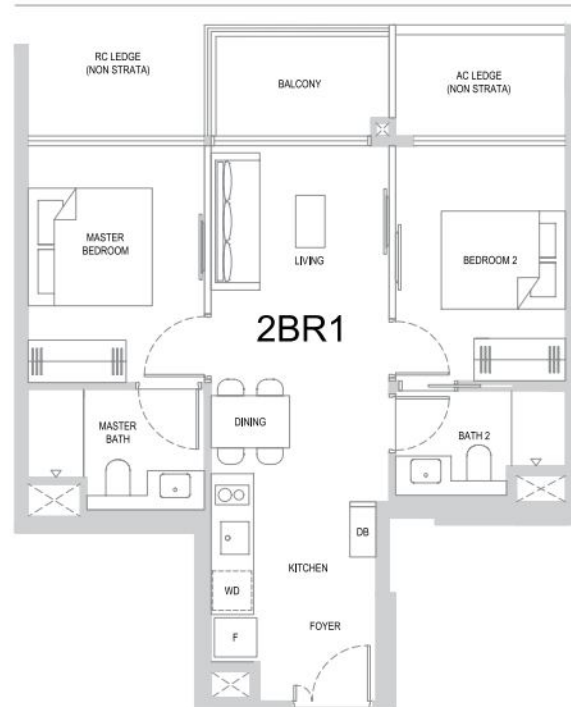


2-BEDROOM

TYPE 2BR1

60 sqm / 646 sqft

#03-09 to #30-09



BP NO. :
A1805-00010-2023-BP01 dated 14 Dec 2024
A1805-00010-2023-BP02 dated 24 Feb 2025

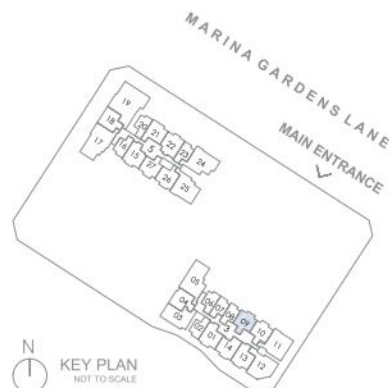
Scale
0 1 2 3 4 5M

Legend

F	Fridge
WD	Washer cum Dryer
DB	Distribution Board
AC LEDGE	Air-Conditioner Ledge (Excluded from Strata Area)
RC LEDGE	Reinforced Concrete Ledge (Excluded from Strata Area)
⊠	Void Space / Rainwater Down Pipe (Excluded from Strata Area)

Wall not allowed to be hacked or altered (including by way of drilling)

Areas include balcony, where applicable. All AC ledges and RC ledges are excluded from strata area. All RC ledges are non-load bearing. The plans are subjected to change as may be required by relevant authorities. All areas and measurements stated herein as approximate and subject to final survey.



2-BEDROOM

TYPE 2BR2

62 sqm / 667 sqft

#03-26 to #13-26
#15-26 to #33-26
#35-26 to #44-26



BP NO. :
A1805-00010-2023-BP01 dated 14 Dec 2024
A1805-00010-2023-BP02 dated 24 Feb 2025

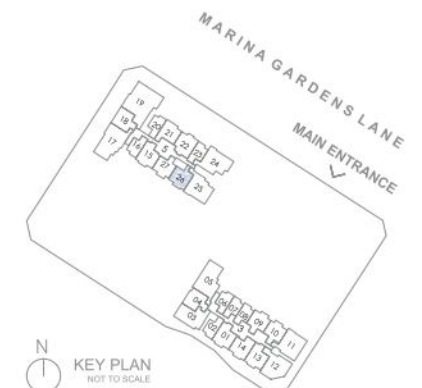
Scale
0 1 2 3 4 5M

Legend

F	Fridge
WD	Washer cum Dryer
DB	Distribution Board
AC LEDGE	Air-Conditioner Ledge (Excluded from Strata Area)
RC LEDGE	Reinforced Concrete Ledge (Excluded from Strata Area)
⊠	Void Space / Rainwater Down Pipe (Excluded from Strata Area)

Wall not allowed to be hacked or altered (including by way of drilling)

Areas include balcony, where applicable. All AC ledges and RC ledges are excluded from strata area. All RC ledges are non-load bearing. The plans are subjected to change as may be required by relevant authorities. All areas and measurements stated herein as approximate and subject to final survey.



2-BEDROOM

TYPE 2BR3

61 sqm / 657 sqft

#03-27 to #13-27
 #15-27 to #33-27
 #35-27 to #44-27



BP NO. :
 A1805-00010-2023-BP01 dated 14 Dec 2024
 A1805-00010-2023-BP02 dated 24 Feb 2025



Legend

F	Fridge
WD	Washer cum Dryer
DB	Distribution Board
AC LEDGE	Air-Conditioner Ledge (Excluded from Strata Area)
RC LEDGE	Reinforced Concrete Ledge (Excluded from Strata Area)
⊠	Void Space/Rainwater Down Pipe (Excluded from Strata Area)

Wall not allowed to be hacked or altered (including by way of drilling)

Areas include balcony, where applicable. All AC ledges and RC ledges are excluded from strata area. All RC ledges are non-load bearing. The plans are subjected to change as may be required by relevant authorities. All areas and measurements stated herein as approximate and subject to final survey.



2-BEDROOM

TYPE 2BR4

61 sqm / 657 sqft

#03-21 to #13-21
 #15-21 to #33-21
 #35-21 to #44-21



BP NO. :
 A1805-00010-2023-BP01 dated 14 Dec 2024
 A1805-00010-2023-BP02 dated 24 Feb 2025

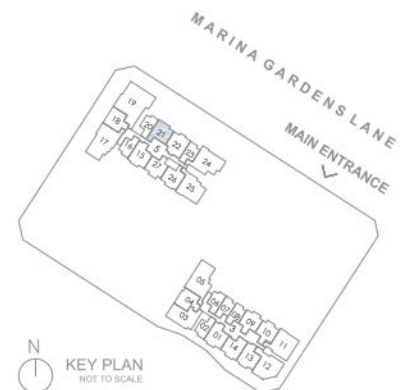


Legend

F	Fridge
WD	Washer cum Dryer
DB	Distribution Board
AC LEDGE	Air-Conditioner Ledge (Excluded from Strata Area)
RC LEDGE	Reinforced Concrete Ledge (Excluded from Strata Area)
⊠	Void Space/Rainwater Down Pipe (Excluded from Strata Area)

Wall not allowed to be hacked or altered (including by way of drilling)

Areas include balcony, where applicable. All AC ledges and RC ledges are excluded from strata area. All RC ledges are non-load bearing. The plans are subjected to change as may be required by relevant authorities. All areas and measurements stated herein as approximate and subject to final survey.



TYPE 2BR4 - PES

61sqm / 657sqft

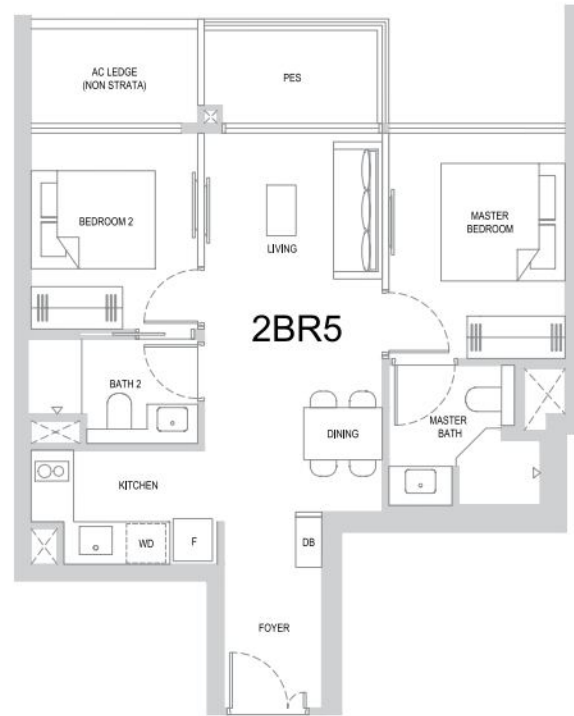
#02-21



2-BEDROOM

TYPE 2BR5
61 sqm / 657 sqft

#02-26



BP NO. :
A1805-00010-2023-BP01 dated 14 Dec 2024
A1805-00010-2023-BP02 dated 24 Feb 2025



- Legend
- F Fridge
 - WD Washer cum Dryer
 - DB Distribution Board
 - AC LEDGE Air-Conditioner Ledge (Excluded from Strata Area)
 - ⊠ Void Space/Rainwater Down Pipe (Excluded from Strata Area)

Wall not allowed to be hacked or altered (including by way of drilling)

Areas include balcony, where applicable. All AC ledges and RC ledges are excluded from strata area. All RC ledges are non-load bearing. The plans are subjected to change as may be required by relevant authorities. All areas and measurements stated herein as approximate and subject to final survey.



2-BEDROOM

TYPE 2BR6
60 sqm / 646 sqft

#02-10 to #30-10



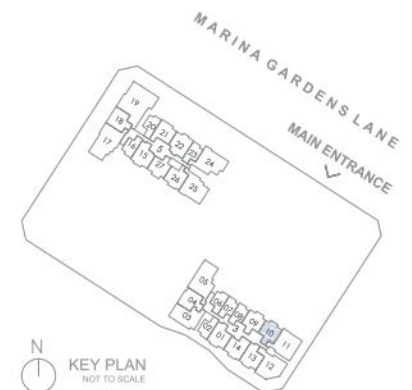
BP NO. :
A1805-00010-2023-BP01 dated 14 Dec 2024
A1805-00010-2023-BP02 dated 24 Feb 2025



- Legend
- F Fridge
 - WD Washer cum Dryer
 - DB Distribution Board
 - AC LEDGE Air-Conditioner Ledge (Excluded from Strata Area)
 - RC LEDGE Reinforced Concrete Ledge (Excluded from Strata Area)
 - ⊠ Void Space/Rainwater Down Pipe (Excluded from Strata Area)

Wall not allowed to be hacked or altered (including by way of drilling)

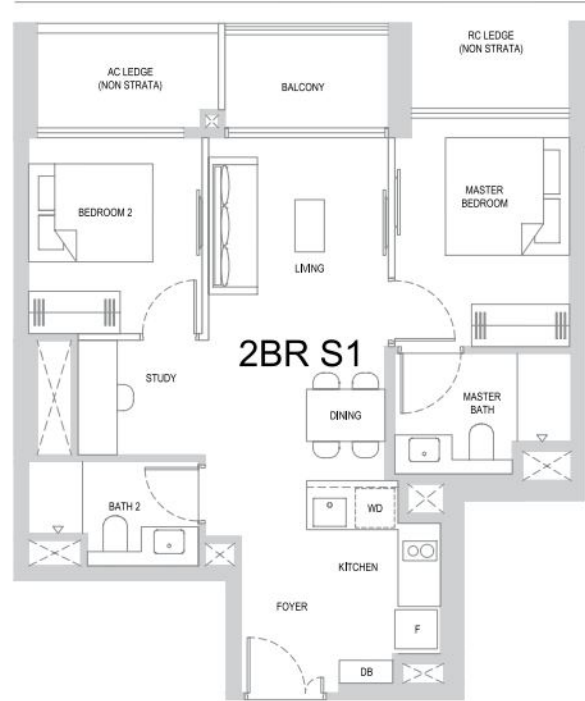
Areas include balcony, where applicable. All AC ledges and RC ledges are excluded from strata area. All RC ledges are non-load bearing. The plans are subjected to change as may be required by relevant authorities. All areas and measurements stated herein as approximate and subject to final survey.



2-BEDROOM

TYPE 2BR S1
63 sqm / 678 sqft

#03-18 to #13-18
#15-18 to #33-18
#35-18 to #44-18



TYPE 2BR S1 - PES
63 sqm / 678 sqft

#02-18



BP NO. :
A1805-00010-2023-BP01 dated 14 Dec 2024
A1805-00010-2023-BP02 dated 24 Feb 2025

Scale
0 1 2 3 4 5M

Legend

F	Fridge
WD	Washer cum Dryer
DB	Distribution Board
AC LEDGE	Air-Conditioner Ledge (Excluded from Strata Area)
RC LEDGE	Reinforced Concrete Ledge (Excluded from Strata Area)
⊠	Void Space/Rainwater Down Pipe (Excluded from Strata Area)

Wall not allowed to be hacked or altered (including by way of drilling)

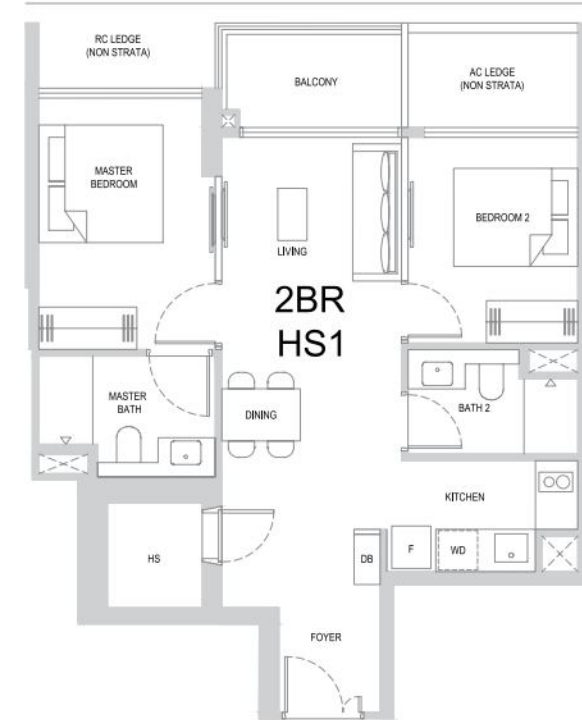
Areas include balcony, where applicable. All AC ledges and RC ledges are excluded from strata area. All RC ledges are non-load bearing. The plans are subjected to change as may be required by relevant authorities. All areas and measurements stated herein as approximate and subject to final survey.



2-BEDROOM

TYPE 2BR HS1
67 sqm / 721 sqft

#02-04 to #30-04



BP NO. :
A1805-00010-2023-BP01 dated 14 Dec 2024
A1805-00010-2023-BP02 dated 24 Feb 2025

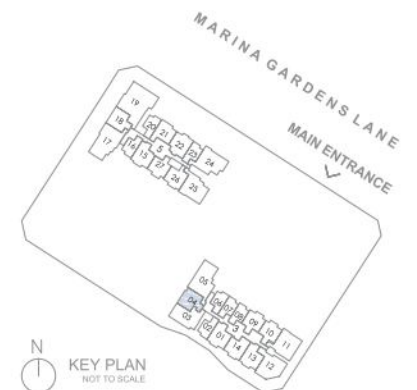
Scale
0 1 2 3 4 5M

Legend

F	Fridge	AC LEDGE	Air-Conditioner Ledge (Excluded from Strata Area)
WD	Washer cum Dryer	RC LEDGE	Reinforced Concrete Ledge (Excluded from Strata Area)
HS	Household Shelter	⊠	Void Space/Rainwater Down Pipe (Excluded from Strata Area)
DB	Distribution Board		

Wall not allowed to be hacked or altered (including by way of drilling)

Areas include balcony, where applicable. All AC ledges and RC ledges are excluded from strata area. All RC ledges are non-load bearing. The plans are subjected to change as may be required by relevant authorities. All areas and measurements stated herein as approximate and subject to final survey.

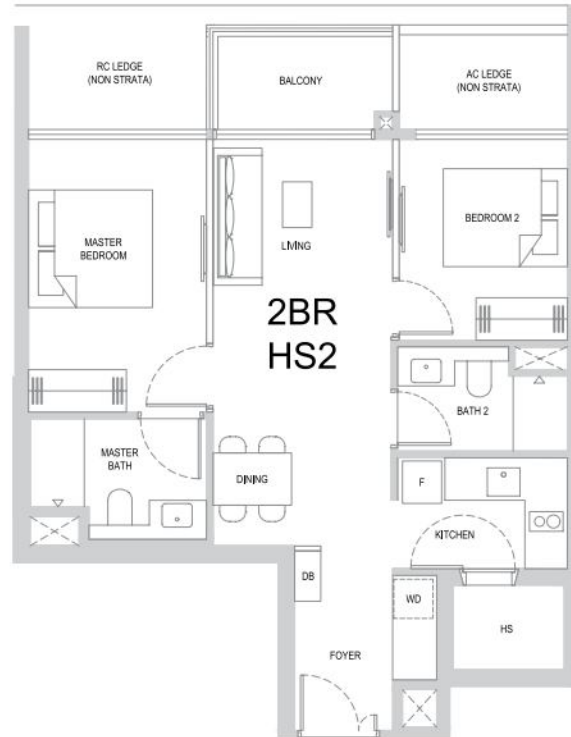


2-BEDROOM

TYPE 2BR HS2

68 sqm / 732 sqft

#02-01 to #30-01



BP NO. :
A1805-00010-2023-BP01 dated 14 Dec 2024
A1805-00010-2023-BP02 dated 24 Feb 2025



Legend

- | | | | |
|----|--------------------|----------|---|
| F | Fridge | AC LEDGE | Air-Conditioner Ledge
(Excluded from Strata Area) |
| WD | Washer cum Dryer | RC LEDGE | Reinforced Concrete Ledge
(Excluded from Strata Area) |
| HS | Household Shelter | ⊠ | Void Space/Rainwater Down Pipe
(Excluded from Strata Area) |
| DB | Distribution Board | | |

Wall not allowed to be hacked or altered (including by way of drilling)

Areas include balcony, where applicable. All AC ledges and RC ledges are excluded from strata area. All RC ledges are non-load bearing. The plans are subjected to change as may be required by relevant authorities. All areas and measurements stated herein as approximate and subject to final survey.

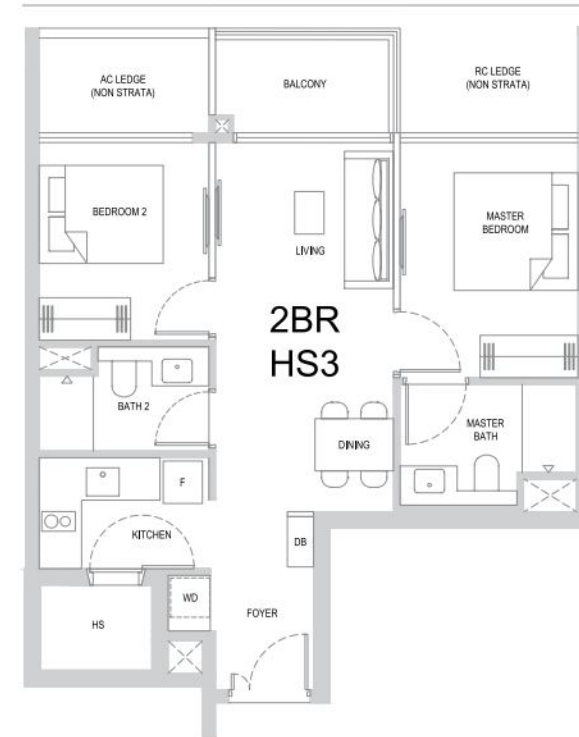


2-BEDROOM

TYPE 2BR HS3

64 sqm / 689 sqft

#02-14 to #30-14



BP NO. :
A1805-00010-2023-BP01 dated 14 Dec 2024
A1805-00010-2023-BP02 dated 24 Feb 2025



Legend

- | | | | |
|----|--------------------|----------|---|
| F | Fridge | AC LEDGE | Air-Conditioner Ledge
(Excluded from Strata Area) |
| WD | Washer cum Dryer | RC LEDGE | Reinforced Concrete Ledge
(Excluded from Strata Area) |
| HS | Household Shelter | ⊠ | Void Space/Rainwater Down Pipe
(Excluded from Strata Area) |
| DB | Distribution Board | | |

Wall not allowed to be hacked or altered (including by way of drilling)

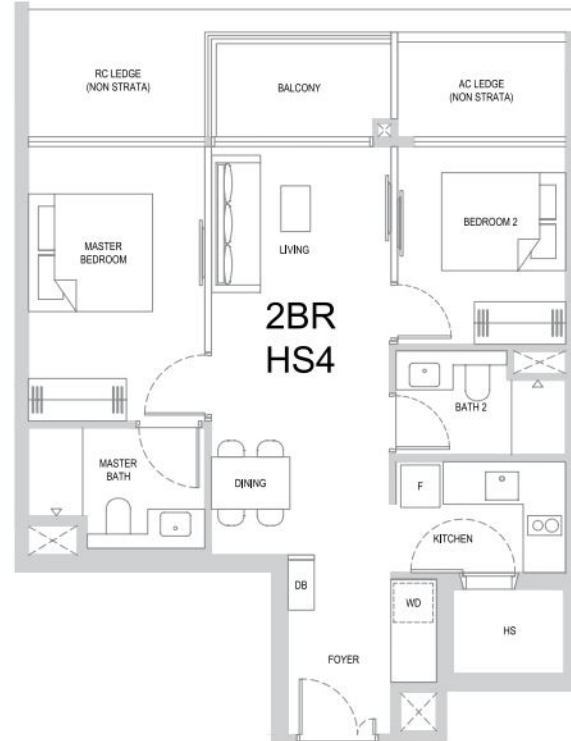
Areas include balcony, where applicable. All AC ledges and RC ledges are excluded from strata area. All RC ledges are non-load bearing. The plans are subjected to change as may be required by relevant authorities. All areas and measurements stated herein as approximate and subject to final survey.



2-BEDROOM

TYPE 2BR HS4
68 sqm / 732 sqft

#02-13 to #30-13



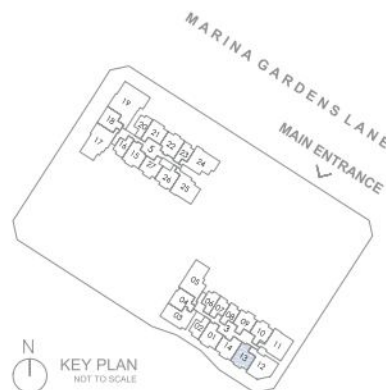
BP NO. :
A1805-00010-2023-BP01 dated 14 Dec 2024
A1805-00010-2023-BP02 dated 24 Feb 2025



- Legend
- F Fridge
 - WD Washer cum Dryer
 - HS Household Shelter
 - DB Distribution Board
 - AC LEDGE Air-Conditioner Ledge (Excluded from Strata Area)
 - RC LEDGE Reinforced Concrete Ledge (Excluded from Strata Area)
 - ⊠ Void Space/Rainwater Down Pipe (Excluded from Strata Area)

Wall not allowed to be hacked or altered (including by way of drilling)

Areas include balcony, where applicable. All AC ledges and RC ledges are excluded from strata area. All RC ledges are non-load bearing. The plans are subjected to change as may be required by relevant authorities. All areas and measurements stated herein as approximate and subject to final survey.



2-BEDROOM

TYPE 2BR HS5
66 sqm / 710 sqft

#03-15 to #13-15
#15-15 to #33-15
#35-15 to #44-15



TYPE 2BR HS5 - PES
66 sqm / 710 sqft

#02-15



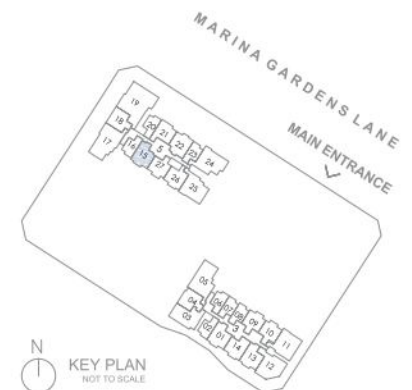
BP NO. :
A1805-00010-2023-BP01 dated 14 Dec 2024
A1805-00010-2023-BP02 dated 24 Feb 2025



- Legend
- F Fridge
 - WD Washer cum Dryer
 - HS Household Shelter
 - DB Distribution Board
 - AC LEDGE Air-Conditioner Ledge (Excluded from Strata Area)
 - RC LEDGE Reinforced Concrete Ledge (Excluded from Strata Area)
 - ⊠ Void Space/Rainwater Down Pipe (Excluded from Strata Area)

Wall not allowed to be hacked or altered (including by way of drilling)

Areas include balcony, where applicable. All AC ledges and RC ledges are excluded from strata area. All RC ledges are non-load bearing. The plans are subjected to change as may be required by relevant authorities. All areas and measurements stated herein as approximate and subject to final survey.



2-BEDROOM

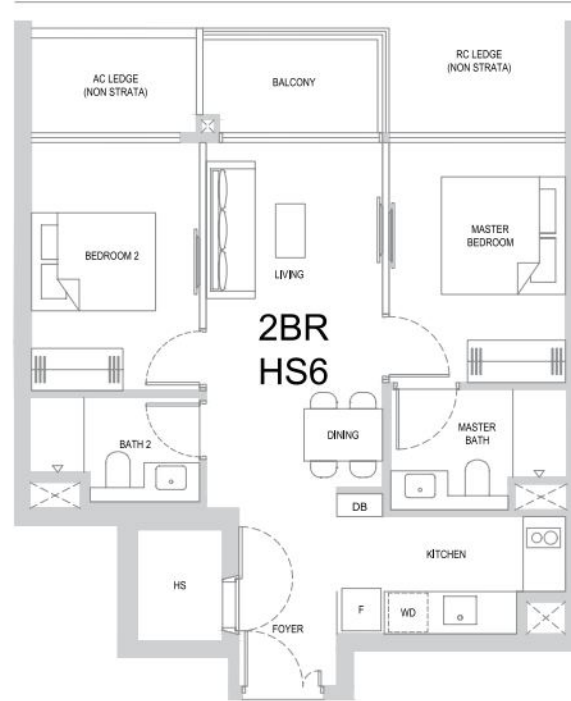
TYPE 2BR HS6

67 sqm / 721 sqft

#03-22 to #13-22

#15-22 to #33-22

#35-22 to #44-22



TYPE 2BR HS6 - PES

67 sqm / 721 sqft

#02-22



BP NO. :

A1805-00010-2023-BP01 dated 14 Dec 2024
A1805-00010-2023-BP02 dated 24 Feb 2025

Scale

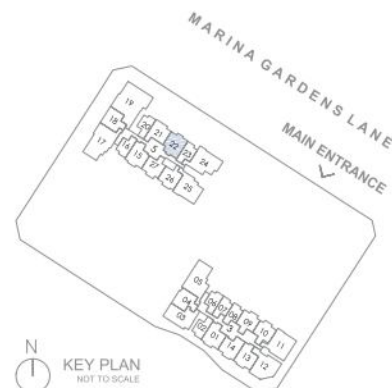


Legend

F	Fridge	AC LEDGE	Air-Conditioner Ledge (Excluded from Strata Area)
WD	Washer cum Dryer	RC LEDGE	Reinforced Concrete Ledge (Excluded from Strata Area)
HS	Household Shelter	⊠	Void Space/Rainwater Down Pipe (Excluded from Strata Area)
DB	Distribution Board		

Wall not allowed to be hacked or altered (including by way of drilling)

Areas include balcony, where applicable. All AC ledges and RC ledges are excluded from strata area. All RC ledges are non-load bearing. The plans are subjected to change as may be required by relevant authorities. All areas and measurements stated herein as approximate and subject to final survey.

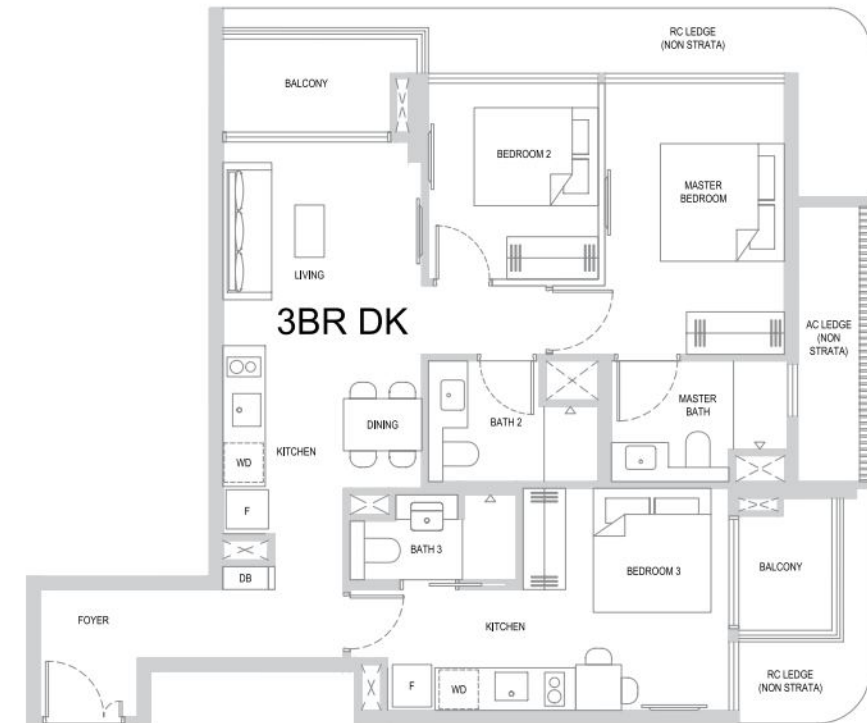


3-BEDROOM

TYPE 3BR DK

90 sqm / 969 sqft

#02-11 to #30-11



BP NO. :

A1805-00010-2023-BP01 dated 14 Dec 2024
A1805-00010-2023-BP02 dated 24 Feb 2025

Scale

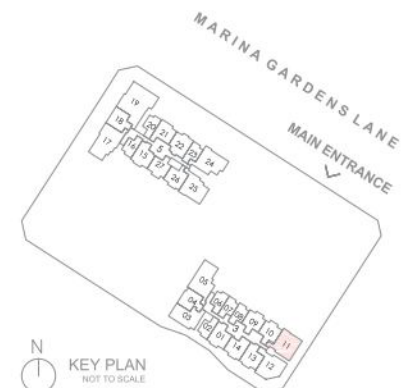


Legend

F	Fridge	AC LEDGE	Air-Conditioner Ledge (Excluded from Strata Area)
WD	Washer cum Dryer	RC LEDGE	Reinforced Concrete Ledge (Excluded from Strata Area)
DB	Distribution Board	⊠	Void Space/Rainwater Down Pipe (Excluded from Strata Area)
AC LEDGE	Air-Conditioner Ledge (Excluded from Strata Area)		
RC LEDGE	Reinforced Concrete Ledge (Excluded from Strata Area)		
⊠	Void Space/Rainwater Down Pipe (Excluded from Strata Area)		

Wall not allowed to be hacked or altered (including by way of drilling)

Areas include balcony, where applicable. All AC ledges and RC ledges are excluded from strata area. All RC ledges are non-load bearing. The plans are subjected to change as may be required by relevant authorities. All areas and measurements stated herein as approximate and subject to final survey.



3-BEDROOM

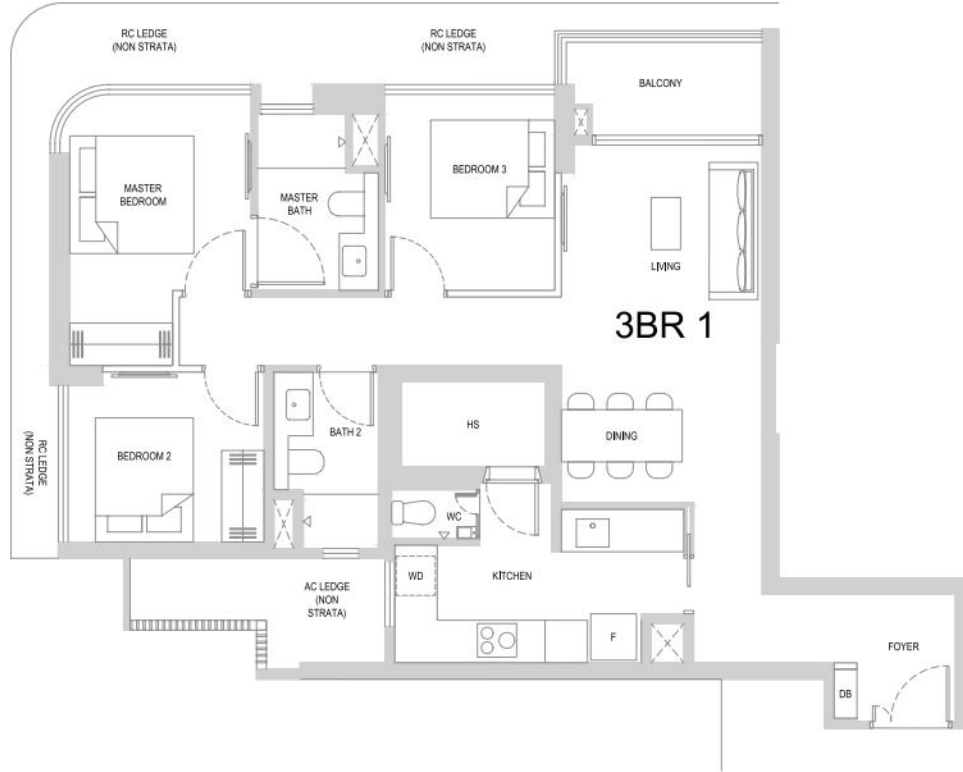
TYPE 3BR1

94 sqm / 1012 sqft

#03-25 to #13-25

#15-25 to #33-25

#35-25 to #44-25



TYPE 3BR1 - PES

94 sqm / 1012 sqft

#02-25



BP NO. :
A1805-00010-2023-BP01 dated 14 Dec 2024
A1805-00010-2023-BP02 dated 24 Feb 2025

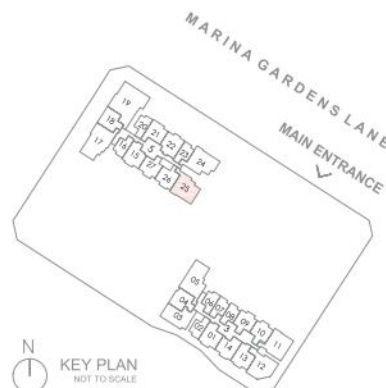


Legend

- | | | | |
|----|--------------------|----------|---|
| F | Fridge | AC LEDGE | Air-Conditioner Ledge
(Excluded from Strata Area) |
| WD | Washer cum Dryer | RC LEDGE | Reinforced Concrete Ledge
(Excluded from Strata Area) |
| WC | Water Closet | ⊠ | Void Space/Rainwater Down Pipe
(Excluded from Strata Area) |
| HS | Household Shelter | | |
| DB | Distribution Board | | |

Wall not allowed to be hacked or altered (including by way of drilling)

Areas include balcony, where applicable. All AC ledges and RC ledges are excluded from strata area. All RC ledges are non-load bearing. The plans are subjected to change as may be required by relevant authorities. All areas and measurements stated herein as approximate and subject to final survey.



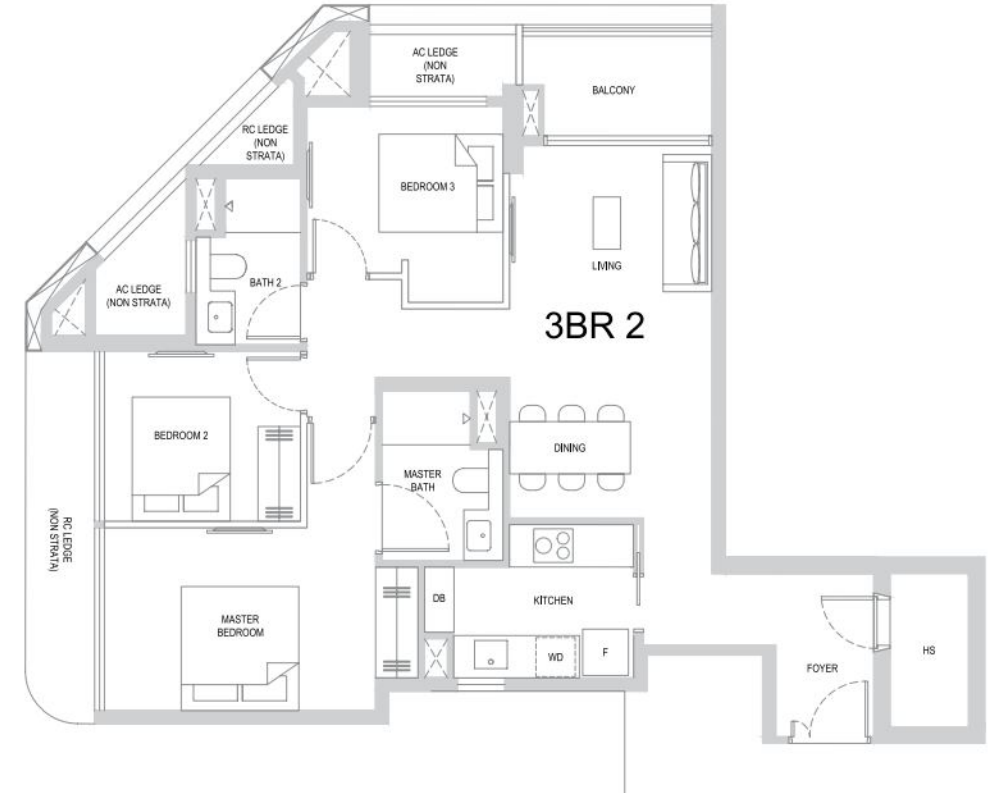
KEY PLAN
NOT TO SCALE

3-BEDROOM

TYPE 3BR2

91 sqm / 980 sqft

#02-12 to #30-12



BP NO. :
A1805-00010-2023-BP01 dated 14 Dec 2024
A1805-00010-2023-BP02 dated 24 Feb 2025

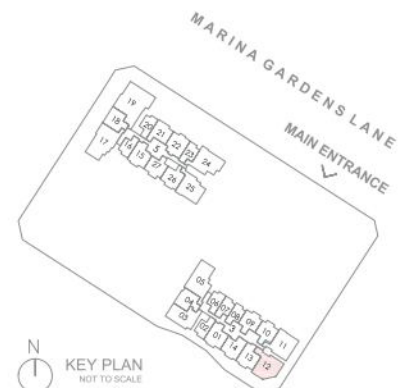


Legend

- | | | | |
|----|--------------------|----------|---|
| F | Fridge | AC LEDGE | Air-Conditioner Ledge
(Excluded from Strata Area) |
| WD | Washer cum Dryer | RC LEDGE | Reinforced Concrete Ledge
(Excluded from Strata Area) |
| HS | Household Shelter | ⊠ | Void Space/Rainwater Down Pipe
(Excluded from Strata Area) |
| DB | Distribution Board | | |

Wall not allowed to be hacked or altered (including by way of drilling)

Areas include balcony, where applicable. All AC ledges and RC ledges are excluded from strata area. All RC ledges are non-load bearing. The plans are subjected to change as may be required by relevant authorities. All areas and measurements stated herein as approximate and subject to final survey.



KEY PLAN
NOT TO SCALE

3-BEDROOM

TYPE 3BR3
84 sqm / 904 sqft

#02-03 to #30-03



BP NO. :
A1805-00010-2023-BP01 dated 14 Dec 2024
A1805-00010-2023-BP02 dated 24 Feb 2025



- Legend
- F Fridge
 - WD Washer cum Dryer
 - HS Household Shelter
 - DB Distribution Board
 - AC LEDGE Air-Conditioner Ledge (Excluded from Strata Area)
 - RC LEDGE Reinforced Concrete Ledge (Excluded from Strata Area)
 - ⊠ Void Space/Rainwater Down Pipe (Excluded from Strata Area)

Wall not allowed to be hacked or altered (including by way of drilling)

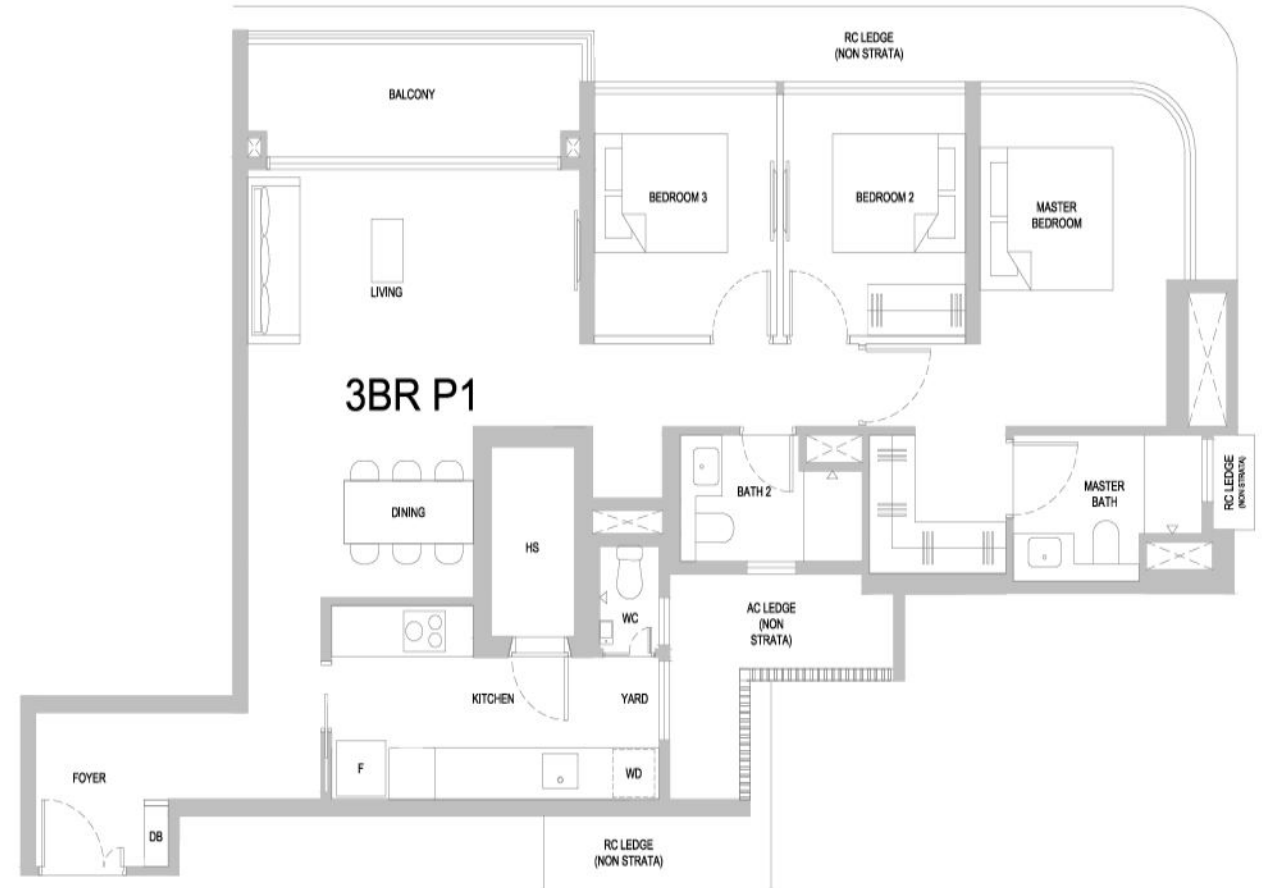
Areas include balcony, where applicable. All AC ledges and RC ledges are excluded from strata area. All RC ledges are non-load bearing. The plans are subjected to change as may be required by relevant authorities. All areas and measurements stated herein as approximate and subject to final survey.



3-BEDROOM PREMIUM

TYPE 3BR P1
109 sqm / 1173 sqft

#02-05 to #30-05



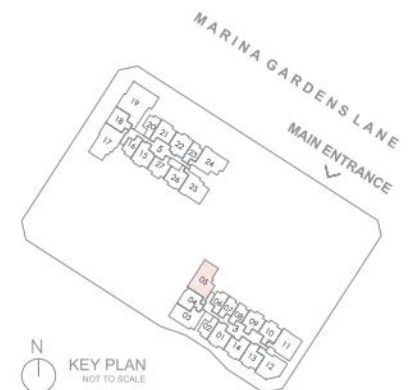
BP NO. :
A1805-00010-2023-BP01 dated 14 Dec 2024
A1805-00010-2023-BP02 dated 24 Feb 2025



- Legend
- F Fridge
 - WD Washer cum Dryer
 - WC Water Closet
 - HS Household Shelter
 - DB Distribution Board
 - AC LEDGE Air-Conditioner Ledge (Excluded from Strata Area)
 - RC LEDGE Reinforced Concrete Ledge (Excluded from Strata Area)
 - ⊠ Void Space/Rainwater Down Pipe (Excluded from Strata Area)

Wall not allowed to be hacked or altered (including by way of drilling)

Areas include balcony, where applicable. All AC ledges and RC ledges are excluded from strata area. All RC ledges are non-load bearing. The plans are subjected to change as may be required by relevant authorities. All areas and measurements stated herein as approximate and subject to final survey.



3-BEDROOM PREMIUM

TYPE 3BR P2

115 sqm / 1238 sqft

#03-17 to #13-17
 #15-17 to #33-17
 #35-17 to #44-17



TYPE 3BR P2 - PES

115 sqm / 1238sqft

#02-17



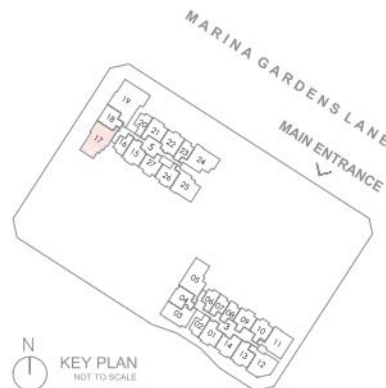
BP NO. :
 A1805-00010-2023-BP01 dated 14 Dec 2024
 A1805-00010-2023-BP02 dated 24 Feb 2025



- Legend
- F Fridge
 - WD Washer cum Dryer
 - WC Water Closet
 - HS Household Shelter
 - DB Distribution Board
 - AC LEDGE Air-Conditioner Ledge (Excluded from Strata Area)
 - RC LEDGE Reinforced Concrete Ledge (Excluded from Strata Area)
 - ⊠ Void Space/Rainwater Down Pipe (Excluded from Strata Area)

Wall not allowed to be hacked or altered (including by way of drilling)

Areas include balcony, where applicable. All AC ledges and RC ledges are excluded from strata area. All RC ledges are non-load bearing. The plans are subjected to change as may be required by relevant authorities. All areas and measurements stated herein as approximate and subject to final survey.

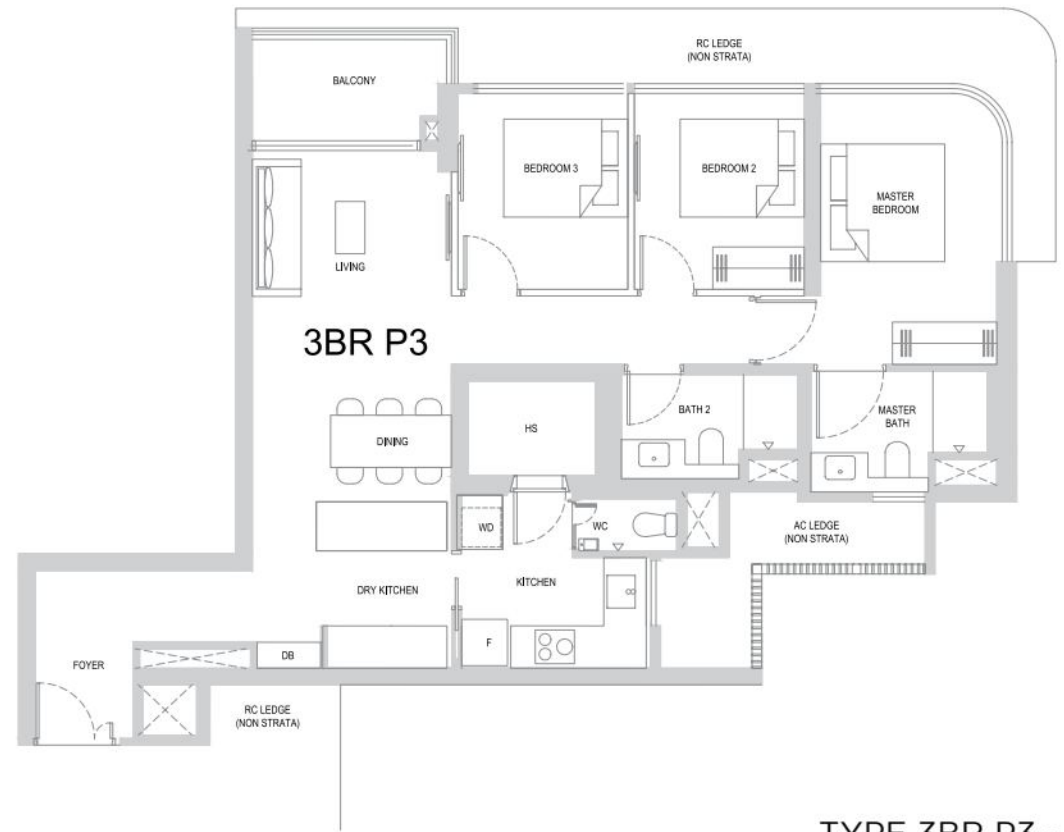


3-BEDROOM PREMIUM

TYPE 3BR P3

99 sqm / 1066 sqft

#03-24 to #13-24
 #15-24 to #33-24
 #35-24 to #44-24



TYPE 3BR P3 - PES

99 sqm / 1066 sqft

#02-24



BP NO. :
 A1805-00010-2023-BP01 dated 14 Dec 2024
 A1805-00010-2023-BP02 dated 24 Feb 2025



- Legend
- F Fridge
 - WD Washer cum Dryer
 - WC Water Closet
 - HS Household Shelter
 - DB Distribution Board
 - AC LEDGE Air-Conditioner Ledge (Excluded from Strata Area)
 - RC LEDGE Reinforced Concrete Ledge (Excluded from Strata Area)
 - ⊠ Void Space/Rainwater Down Pipe (Excluded from Strata Area)

Wall not allowed to be hacked or altered (including by way of drilling)

Areas include balcony, where applicable. All AC ledges and RC ledges are excluded from strata area. All RC ledges are non-load bearing. The plans are subjected to change as may be required by relevant authorities. All areas and measurements stated herein as approximate and subject to final survey.



4-BEDROOM PREMIUM

TYPE 4BR P

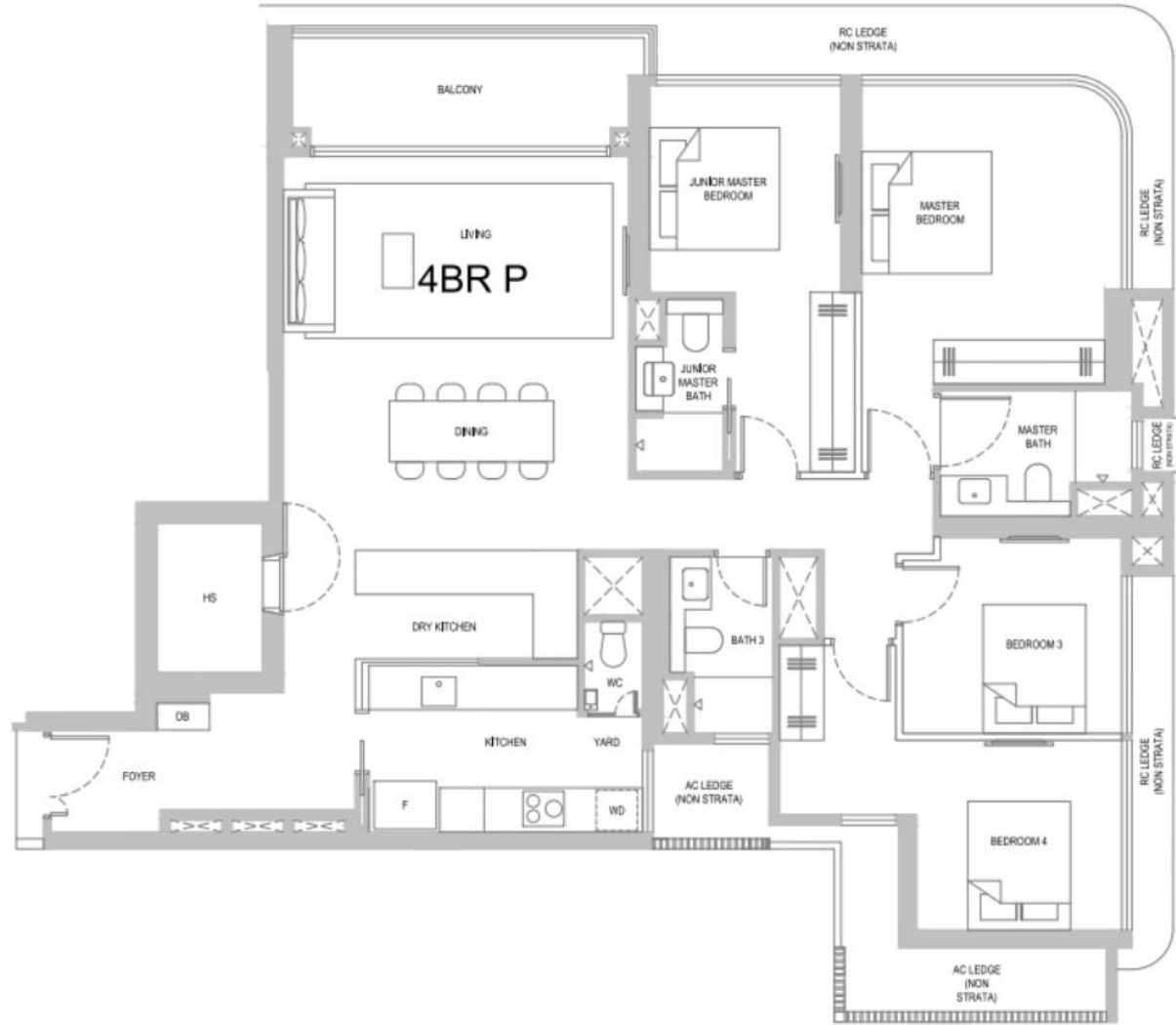
153 sqm / 1647 sqft

#03-19 to #13-19

#15-19 to #33-19

#35-19 to #44-19

BALCONY SCREEN



BP NO. :
 A1805-00010-2023-BP01 dated 14 Dec 2024
 A1805-00010-2023-BP02 dated 24 Feb 2025



Legend

- | | | | |
|----|--------------------|----------|---|
| F | Fridge | AC LEDGE | Air-Conditioner Ledge
(Excluded from Strata Area) |
| WD | Washer cum Dryer | RC LEDGE | Reinforced Concrete Ledge
(Excluded from Strata Area) |
| WC | Water Closet | ⊠ | Void Space/Rainwater Down Pipe
(Excluded from Strata Area) |
| HS | Household Shelter | | |
| DB | Distribution Board | | |

Wall not allowed to be hacked or altered (including by way of drilling)

Areas include balcony, where applicable. All AC ledges and RC ledges are excluded from strata area. All RC ledges are non-load bearing. The plans are subjected to change as may be required by relevant authorities. All areas and measurements stated herein as approximate and subject to final survey.



SECTION A-A
(TYPICAL SECTION OF BALCONY / PES SCREEN)

ELEVATION 1
(TYPICAL ELEVATION OF BALCONY / PES SCREEN)

TYPICAL BALCONY / PES SCREEN
 Scale: NTS