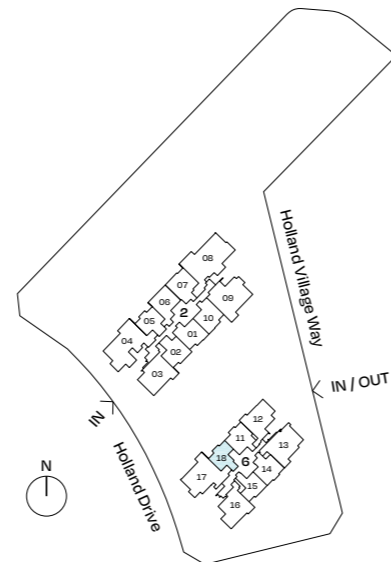
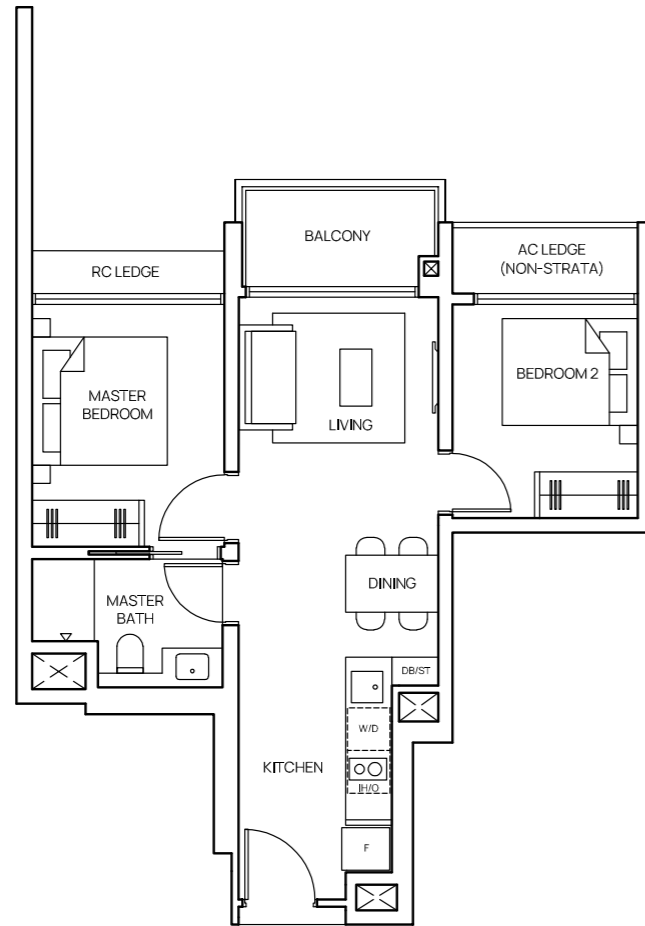


2-Bedroom

TYPE B1

54 sqm (581 sqft)
#04-18 to #40-18



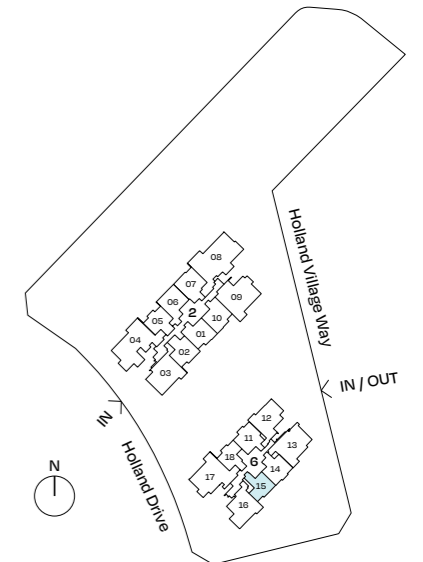
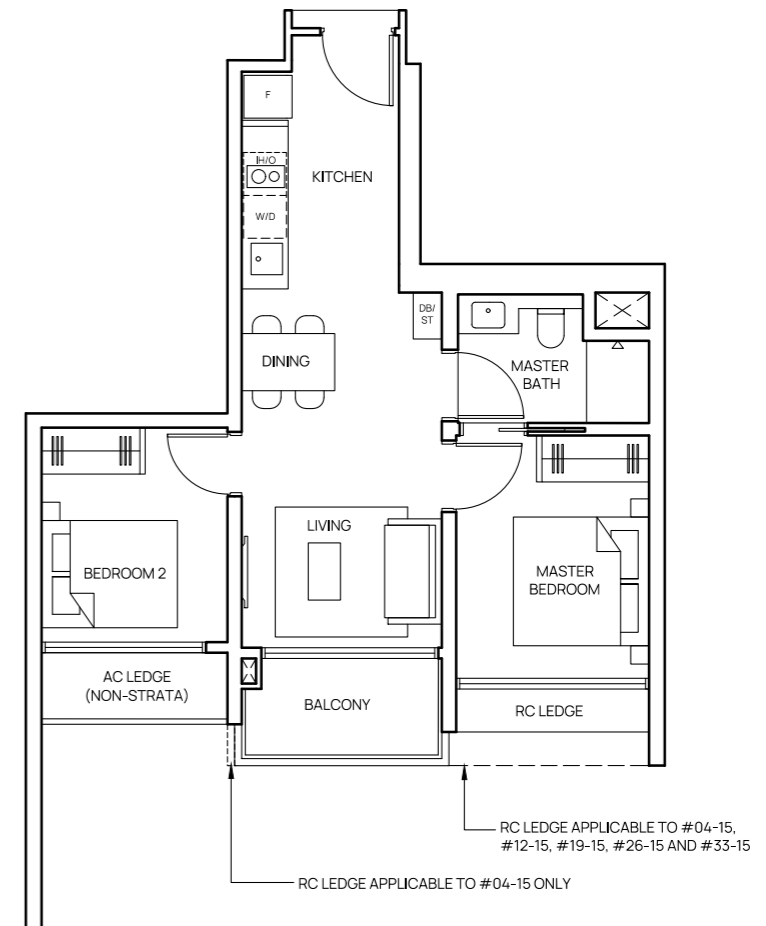
0 1 2 3 4 5m

Areas include balcony where applicable. All AC ledges and RC ledges (non-load bearing) are excluded from strata area. The plans are subjected to change as may be required by relevant authorities. All areas and measurements stated herein as approximate and subject to final survey.

2-Bedroom

TYPE B2

54 sqm (581 sqft)
#04-15 to #40-15



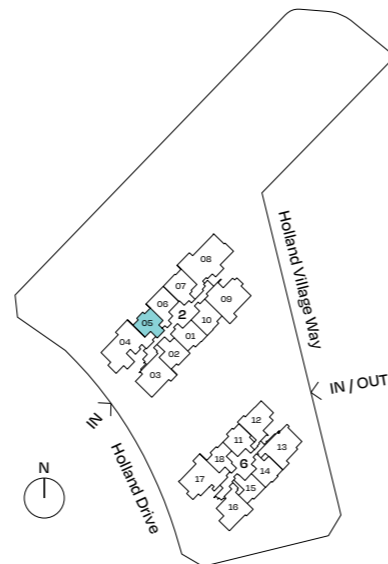
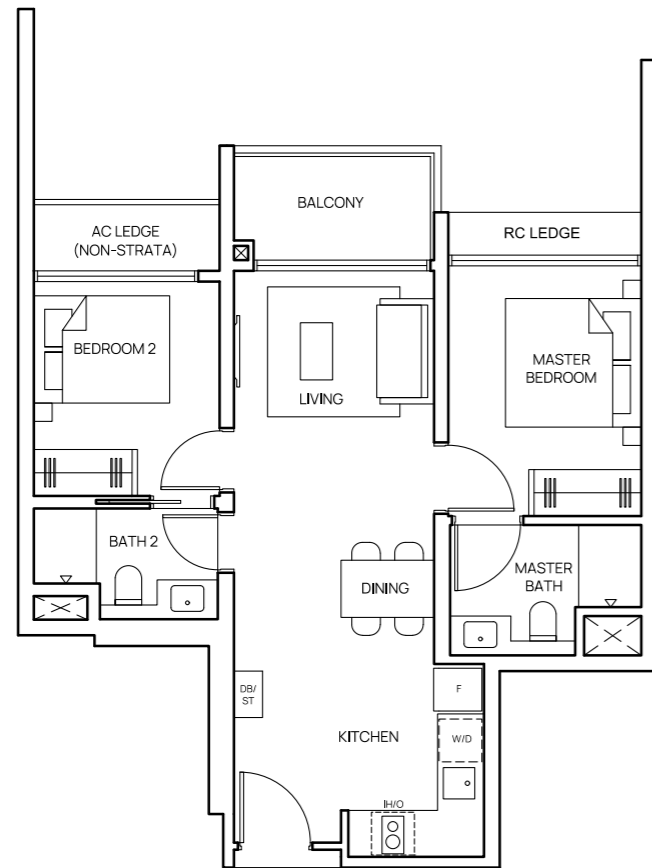
0 1 2 3 4 5m

Areas include balcony where applicable. All AC ledges and RC ledges (non-load bearing) are excluded from strata area. The plans are subjected to change as may be required by relevant authorities. All areas and measurements stated herein as approximate and subject to final survey.

2-Bedroom Premium

TYPE BP1

62 sqm (667 sqft)
#04-05 to #40-05



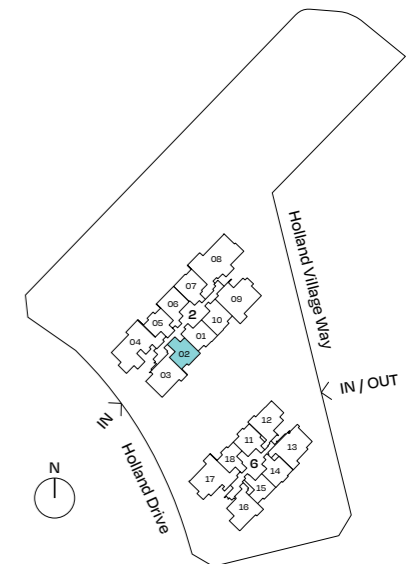
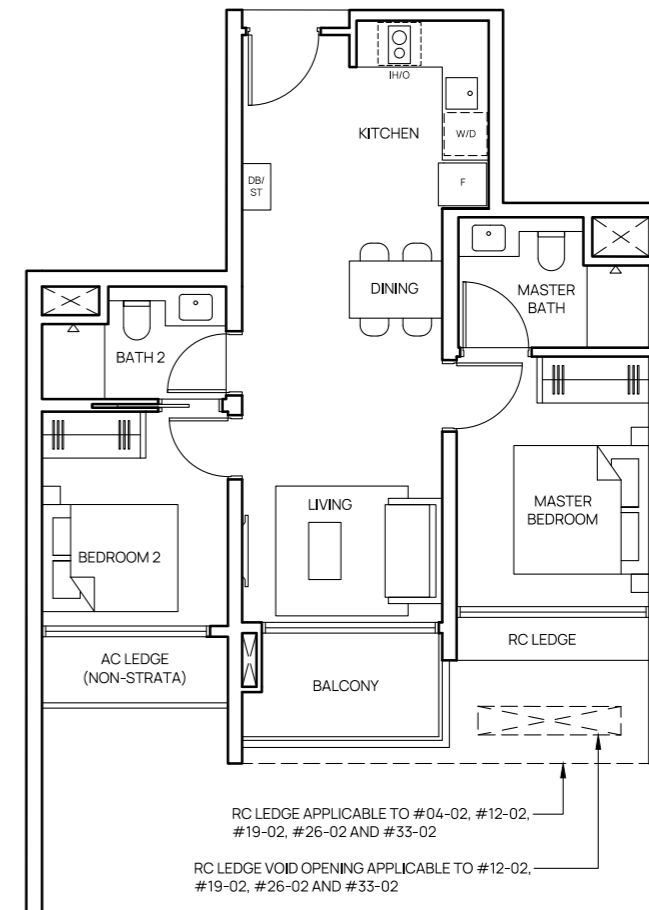
0 1 2 3 4 5m

Areas include balcony where applicable. All AC ledges and RC ledges (non-load bearing) are excluded from strata area. The plans are subjected to change as may be required by relevant authorities. All areas and measurements stated herein as approximate and subject to final survey.

2-Bedroom Premium

TYPE BP2

62 sqm (667 sqft)
#04-02 to #40-02



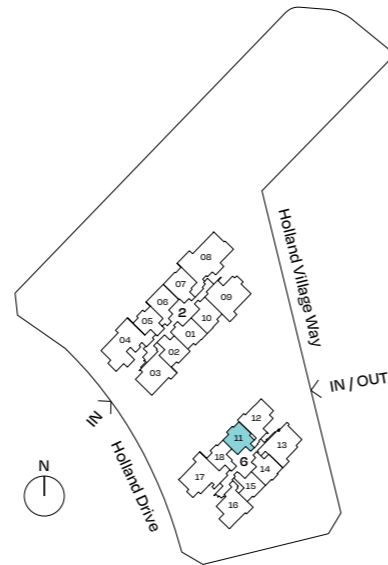
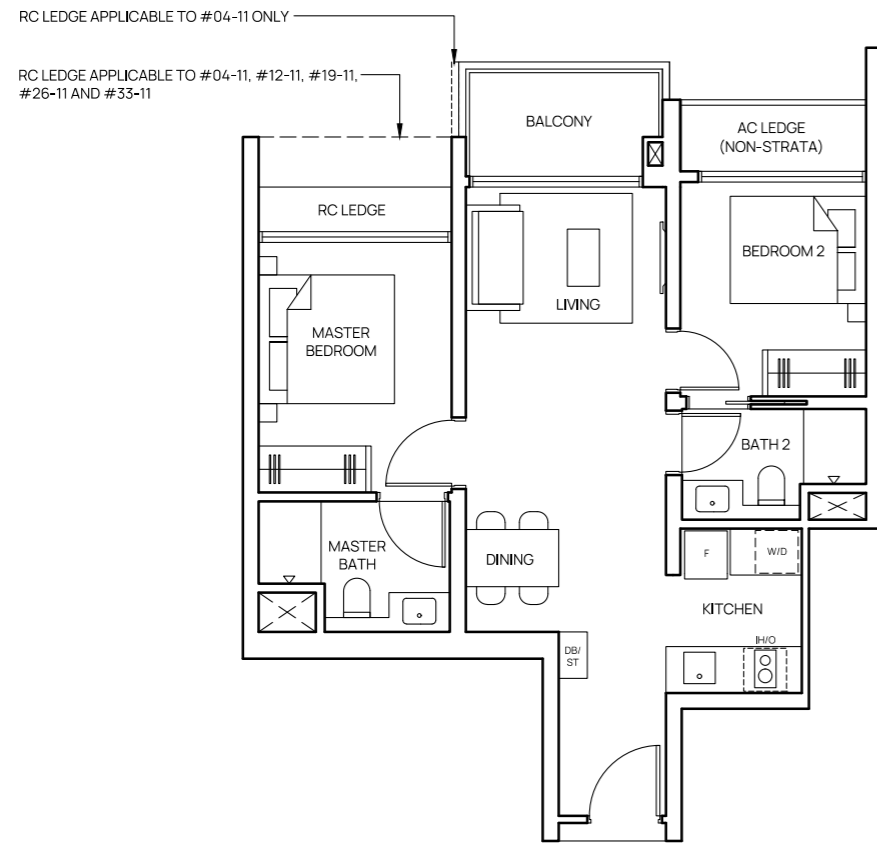
0 1 2 3 4 5m

Areas include balcony where applicable. All AC ledges and RC ledges (non-load bearing) are excluded from strata area. The plans are subjected to change as may be required by relevant authorities. All areas and measurements stated herein as approximate and subject to final survey.

2-Bedroom Premium

TYPE BP3

63 sqm (678 sqft)
#04-11 to #40-11



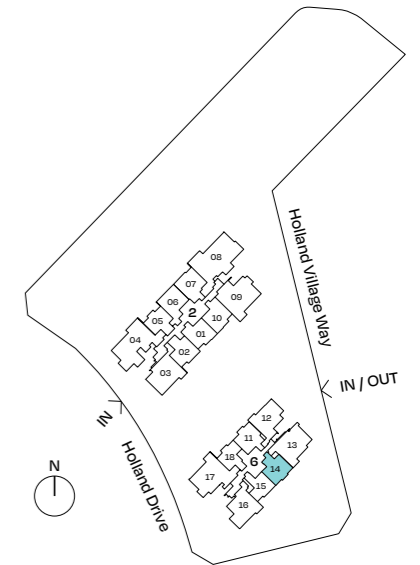
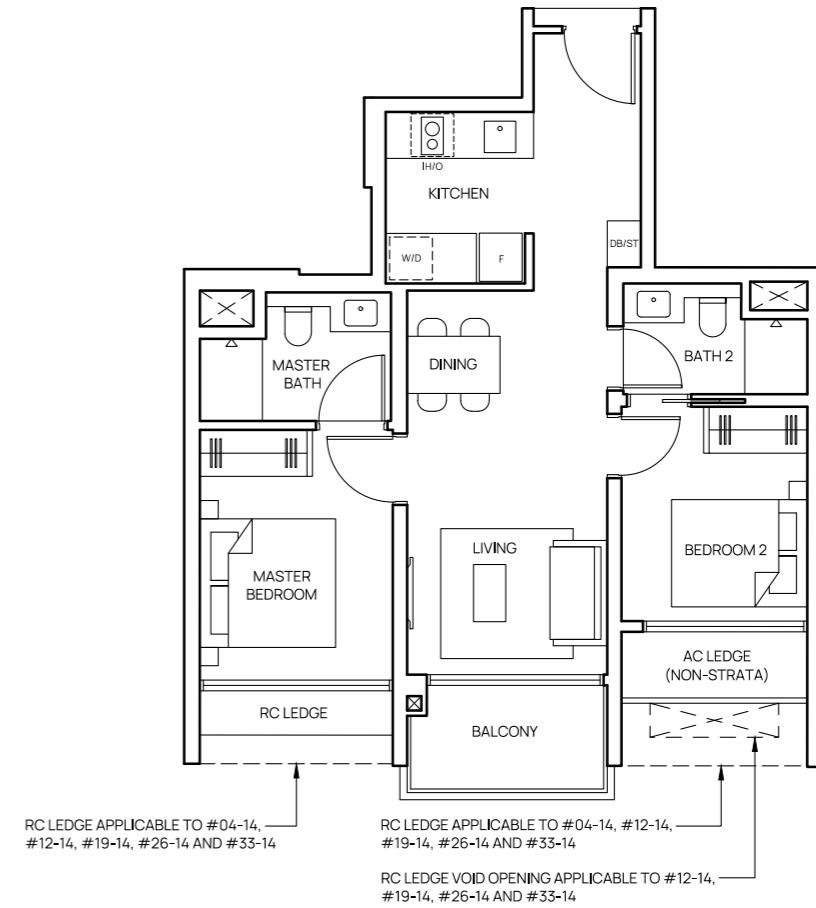
0 1 2 3 4 5m

Areas include balcony where applicable. All AC ledges and RC ledges (non-load bearing) are excluded from strata area. The plans are subjected to change as may be required by relevant authorities. All areas and measurements stated herein as approximate and subject to final survey.

2-Bedroom Premium

TYPE BP4

63 sqm (678 sqft)
#04-14 to #40-14



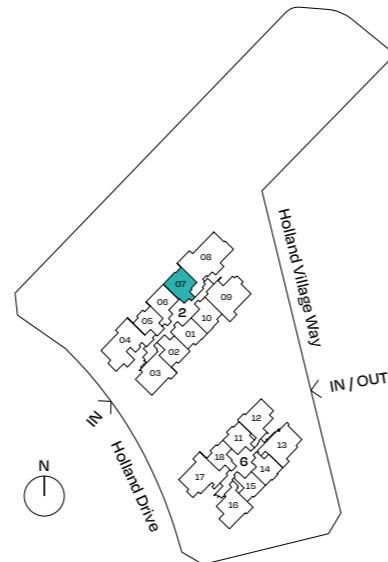
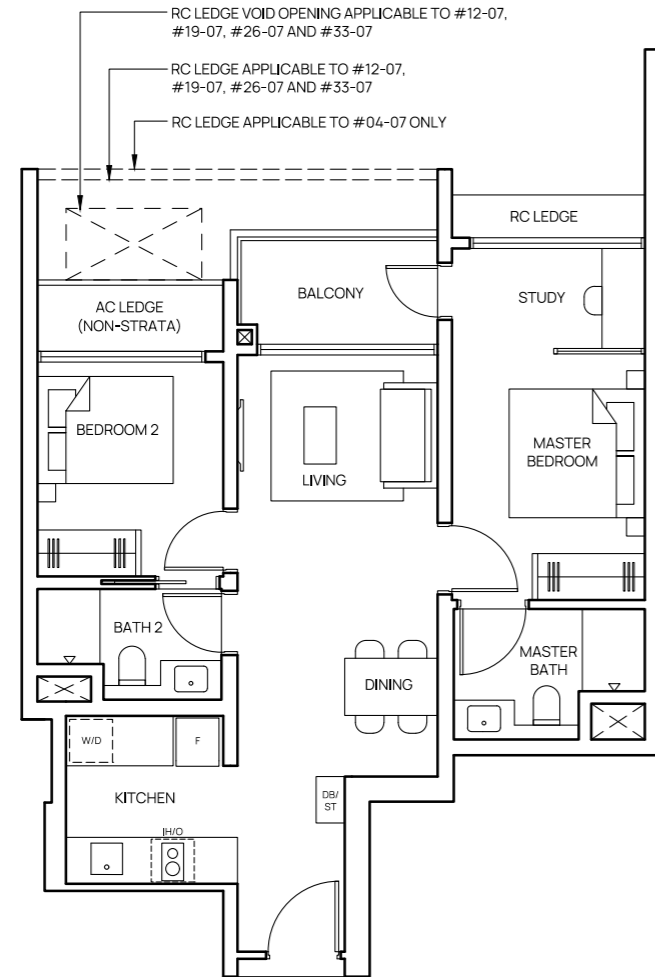
0 1 2 3 4 5m

Areas include balcony where applicable. All AC ledges and RC ledges (non-load bearing) are excluded from strata area. The plans are subjected to change as may be required by relevant authorities. All areas and measurements stated herein as approximate and subject to final survey.

2-Bedroom Premium + Study

TYPE BPS1

68 sqm (732 sqft)
#04-07 to #40-07



0 1 2 3 4 5m

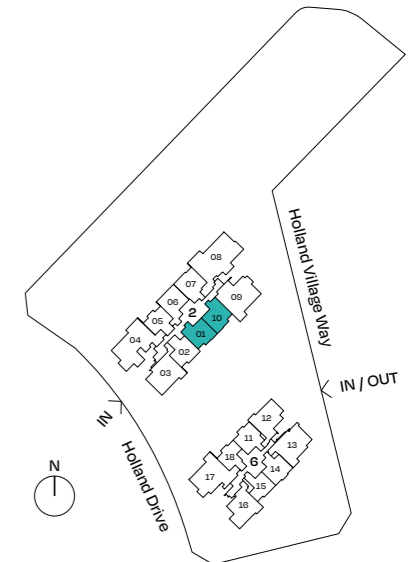
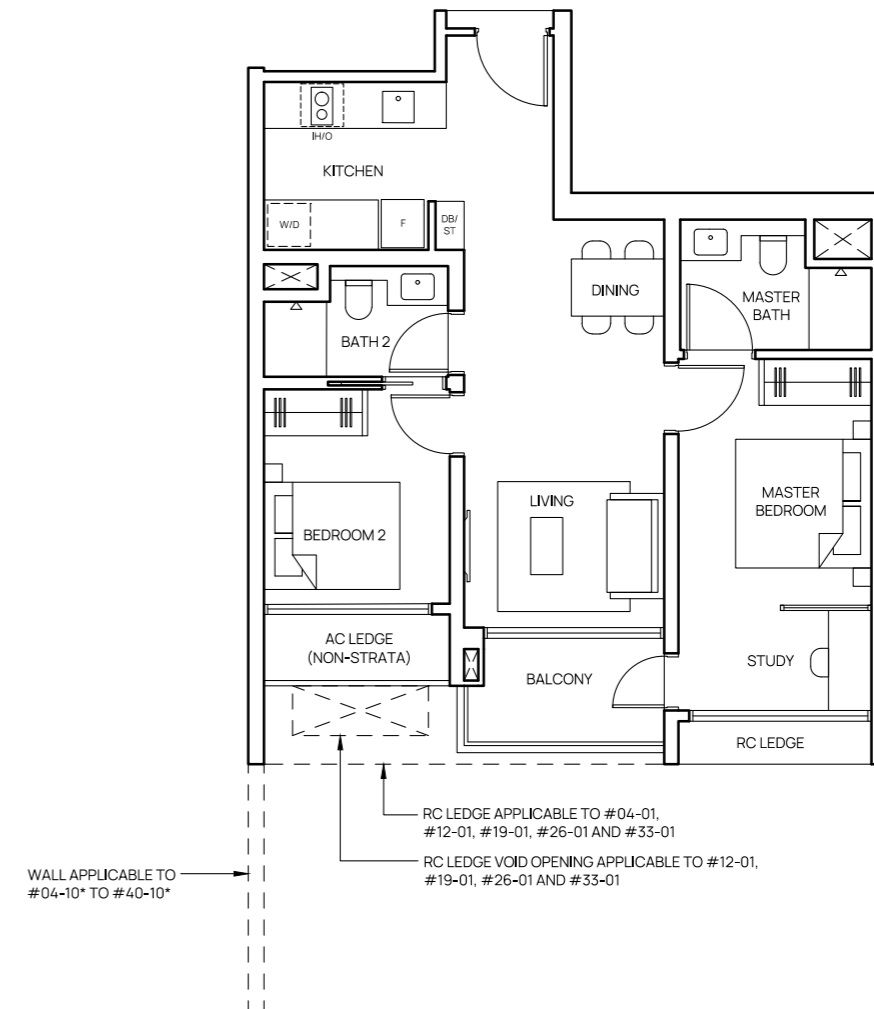
Areas include balcony where applicable. All AC ledges and RC ledges (non-load bearing) are excluded from strata area. The plans are subjected to change as may be required by relevant authorities. All areas and measurements stated herein as approximate and subject to final survey.

2-Bedroom Premium + Study

TYPE BPS2

68 sqm (732 sqft)
#04-01 to #40-01

#04-10* to #40-10*
*Mirrored Unit



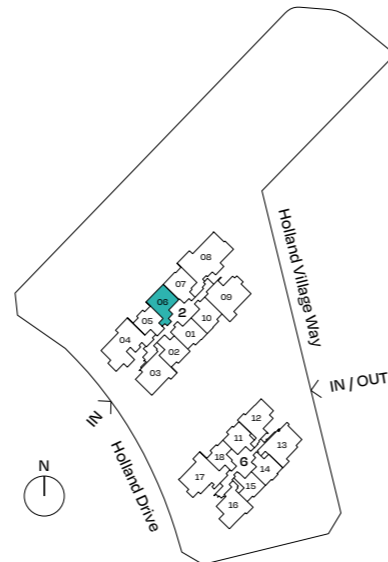
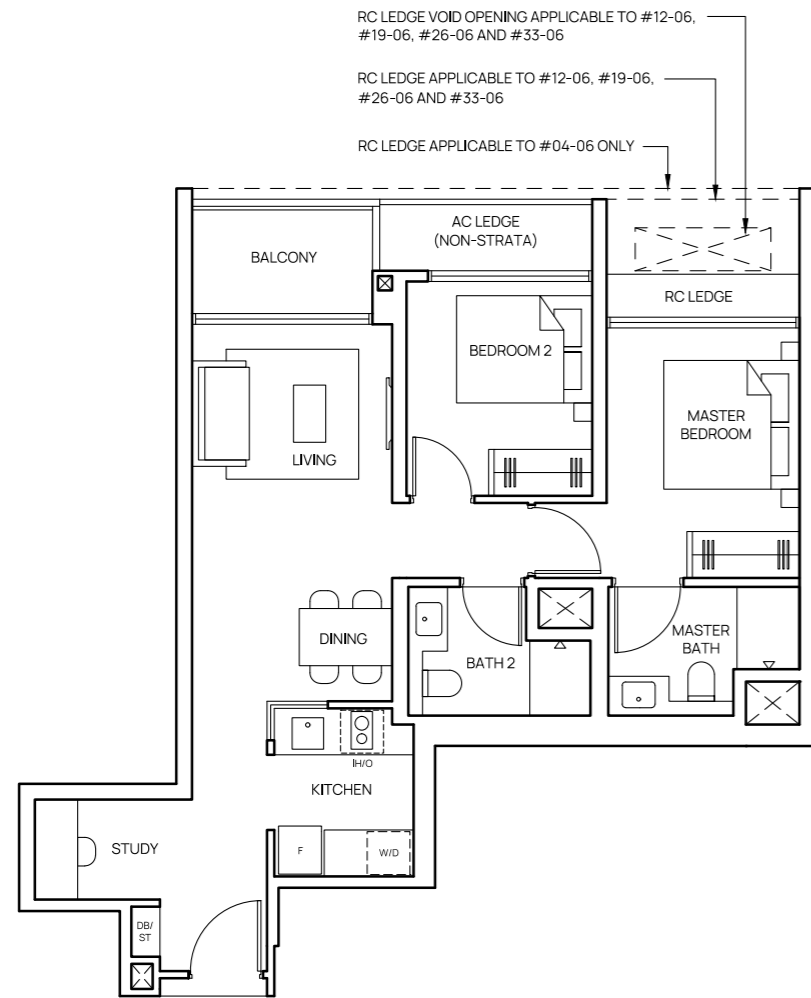
0 1 2 3 4 5m

Areas include balcony where applicable. All AC ledges and RC ledges (non-load bearing) are excluded from strata area. The plans are subjected to change as may be required by relevant authorities. All areas and measurements stated herein as approximate and subject to final survey.

2-Bedroom Premium + Study

TYPE BPS3

69 sqm (743 sqft)
#04-06 to #40-06

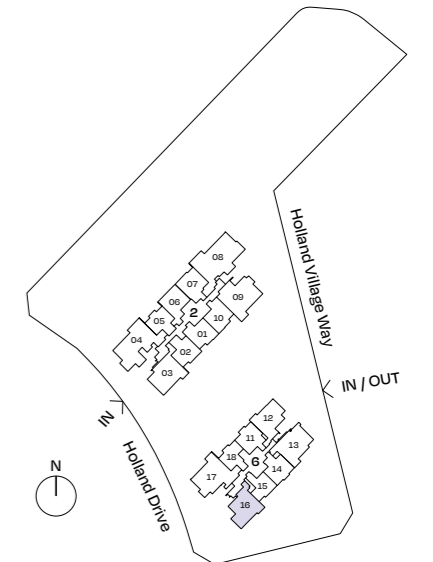
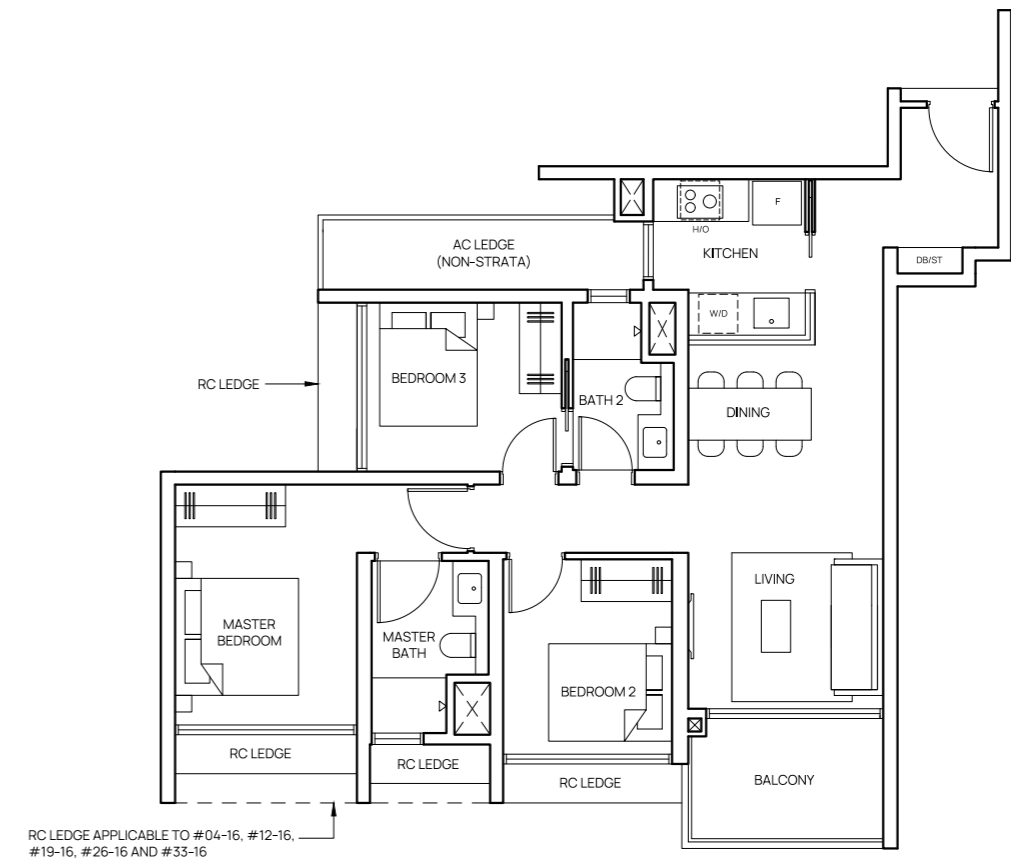


Areas include balcony where applicable. All AC ledges and RC ledges (non-load bearing) are excluded from strata area. The plans are subjected to change as may be required by relevant authorities. All areas and measurements stated herein as approximate and subject to final survey.

3-Bedroom

TYPE C1

85 sqm (915 sqft)
#04-16 to #40-16

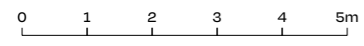
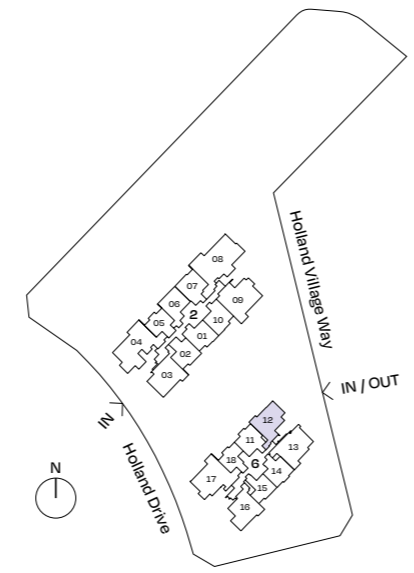
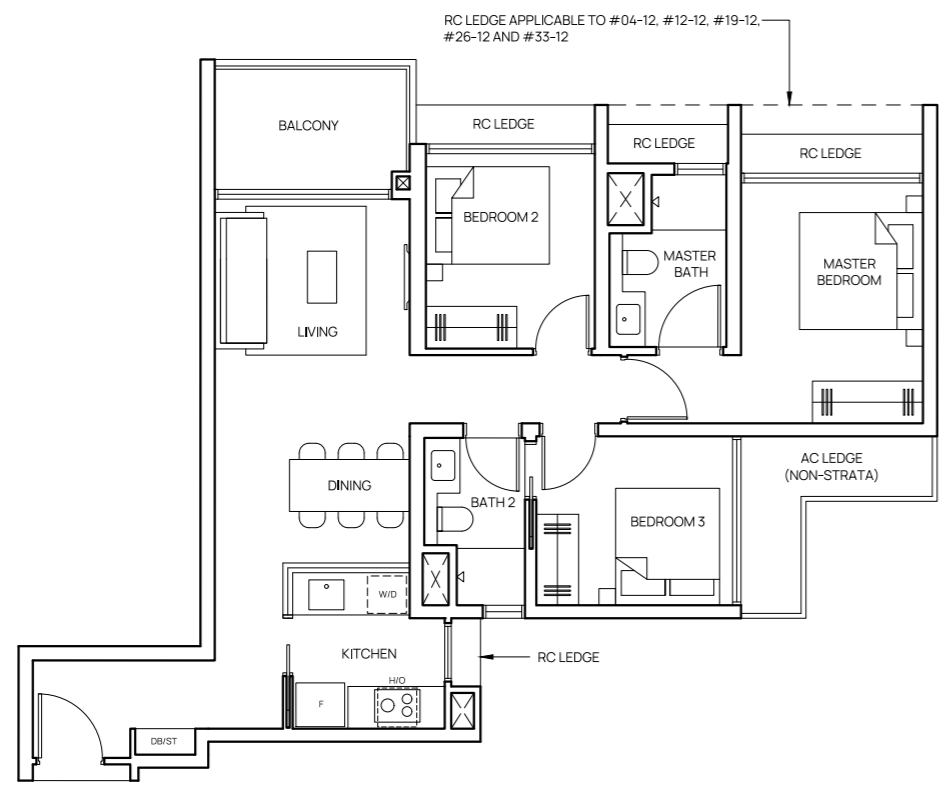


Areas include balcony where applicable. All AC ledges and RC ledges (non-load bearing) are excluded from strata area. The plans are subjected to change as may be required by relevant authorities. All areas and measurements stated herein as approximate and subject to final survey.

3-Bedroom

TYPE C2

85 sqm (915 sqft)
#04-12 to #40-12

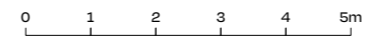
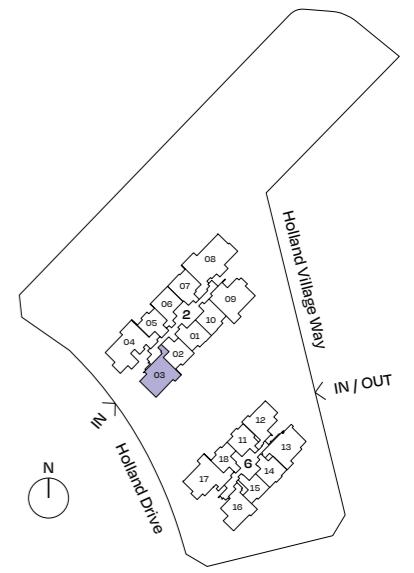
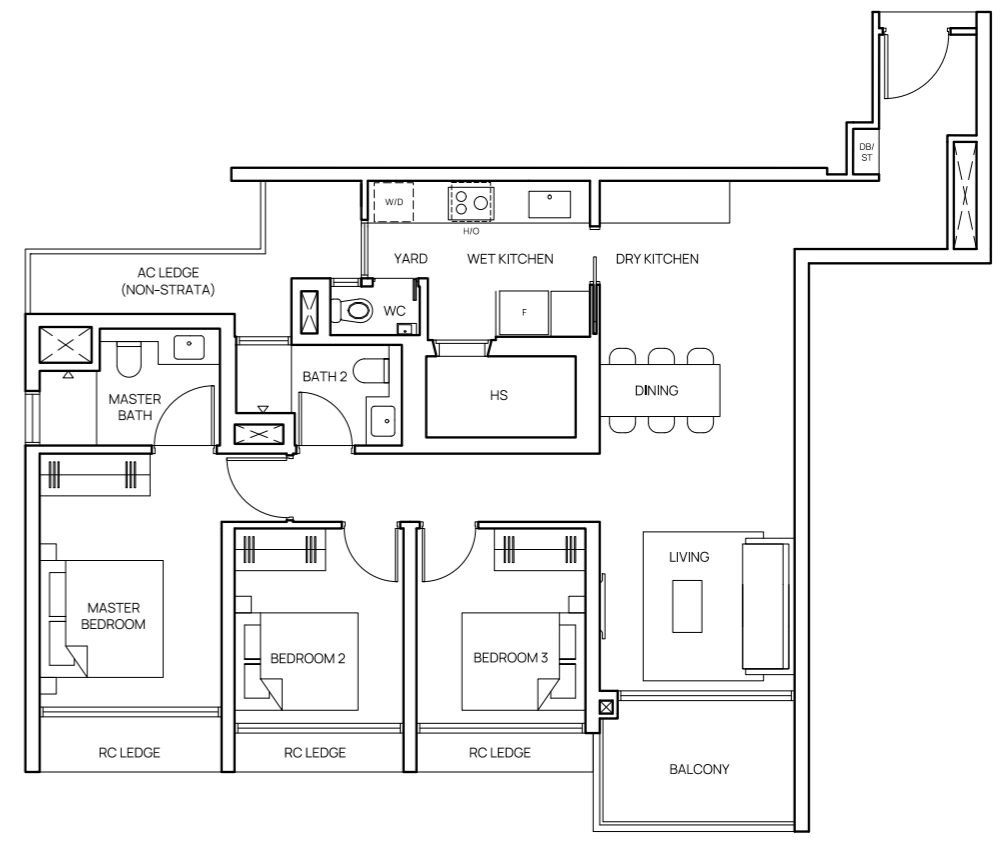


Areas include balcony where applicable. All AC ledges and RC ledges (non-load bearing) are excluded from strata area. The plans are subjected to change as may be required by relevant authorities. All areas and measurements stated herein as approximate and subject to final survey.

3-Bedroom Premium

TYPE CP1

100 sqm (1,076 sqft)
#04-03 to #40-03

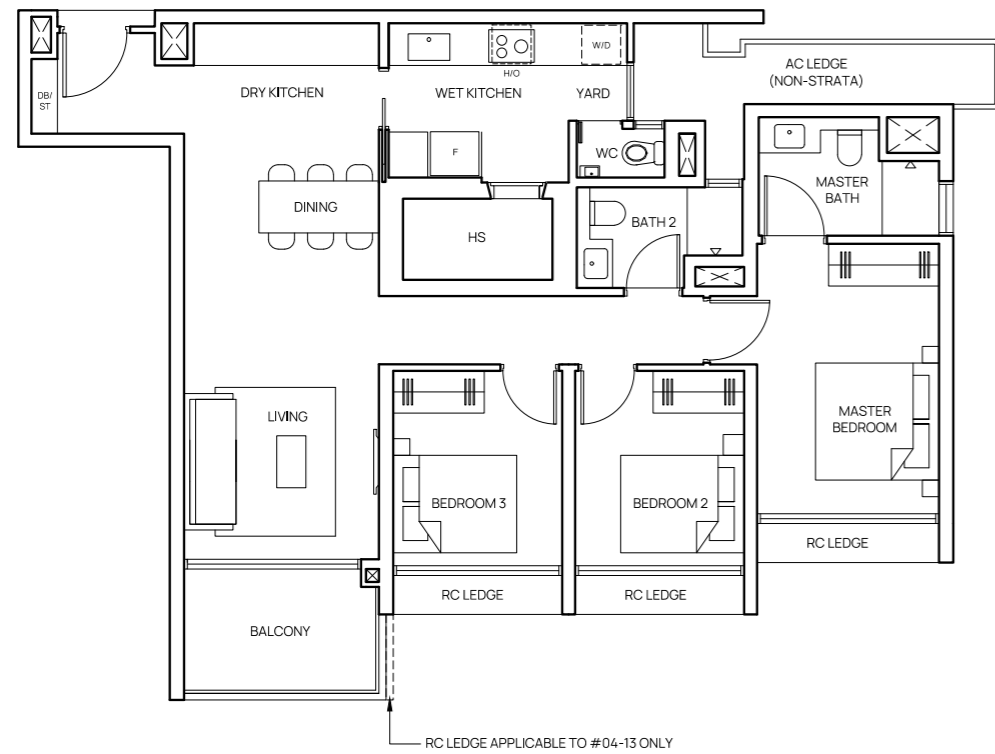


Areas include balcony where applicable. All AC ledges and RC ledges (non-load bearing) are excluded from strata area. The plans are subjected to change as may be required by relevant authorities. All areas and measurements stated herein as approximate and subject to final survey.

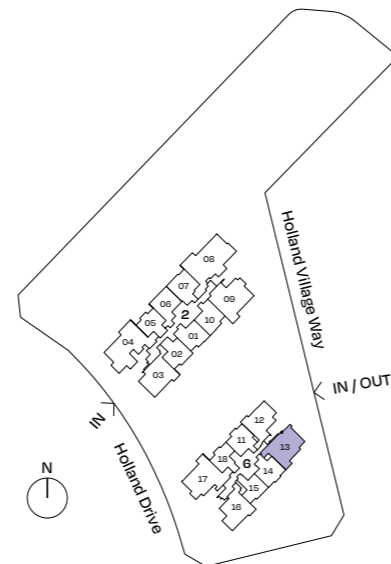
3-Bedroom Premium

TYPE CP2

100 sqm (1,076 sqft)
 #04-13 to #40-13



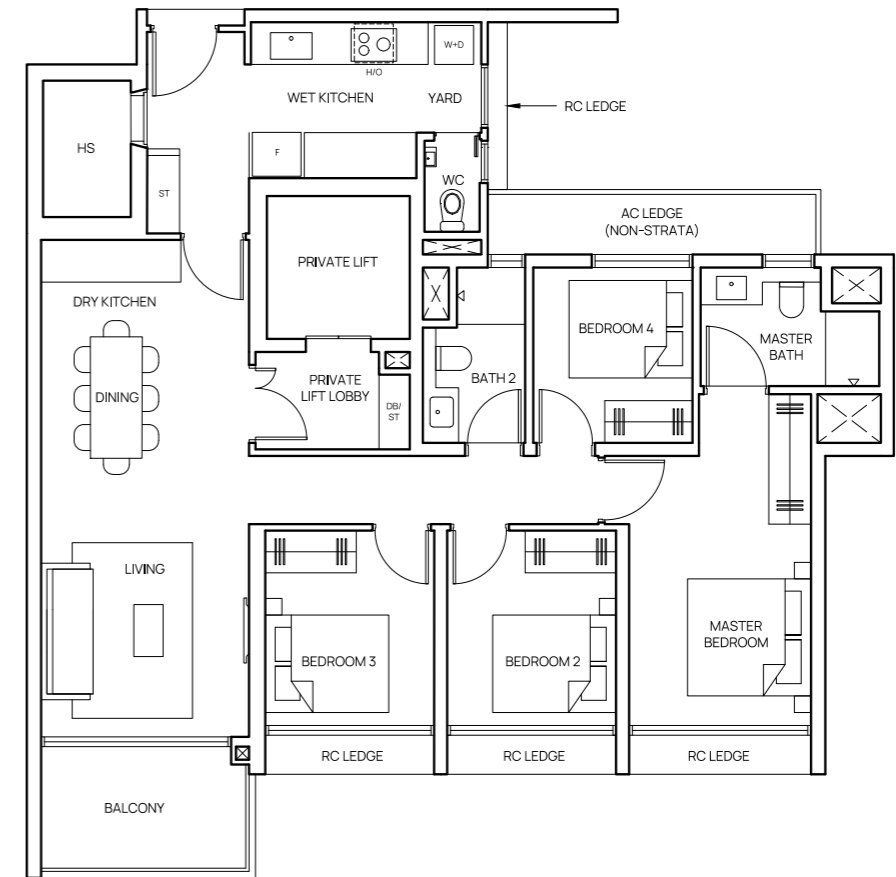
Areas include balcony where applicable. All AC ledges and RC ledges (non-load bearing) are excluded from strata area. The plans are subjected to change as may be required by relevant authorities. All areas and measurements stated herein as approximate and subject to final survey.



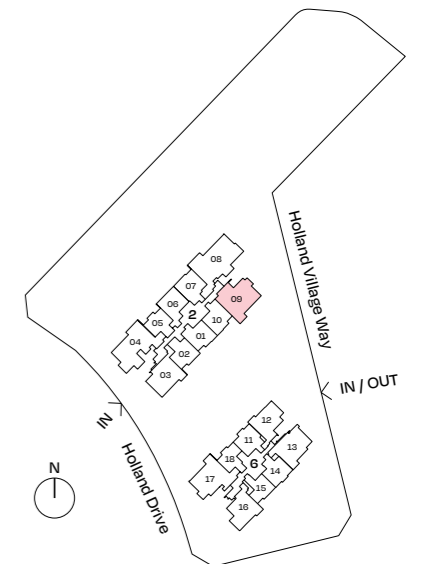
4-Bedroom (with Private Lift)

TYPE D1

115 sqm (1,238 sqft)
 #04-09 to #40-09



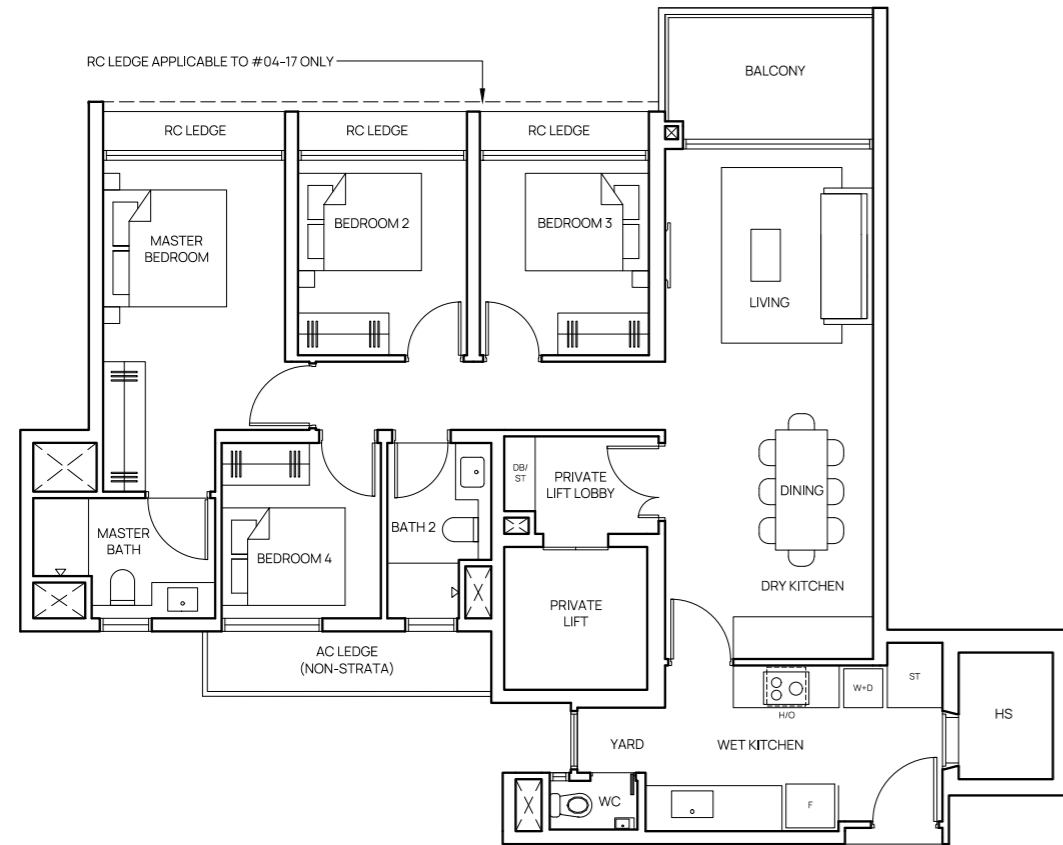
Areas include balcony where applicable. All AC ledges and RC ledges (non-load bearing) are excluded from strata area. The plans are subjected to change as may be required by relevant authorities. All areas and measurements stated herein as approximate and subject to final survey.



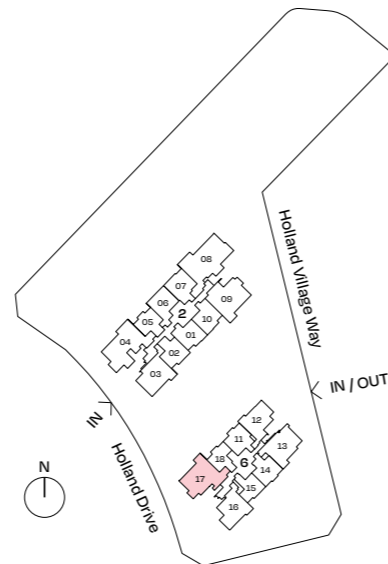
4-Bedroom (with Private Lift)

TYPE D2

115 sqm (1,238 sqft)
#04-17 to #40-17



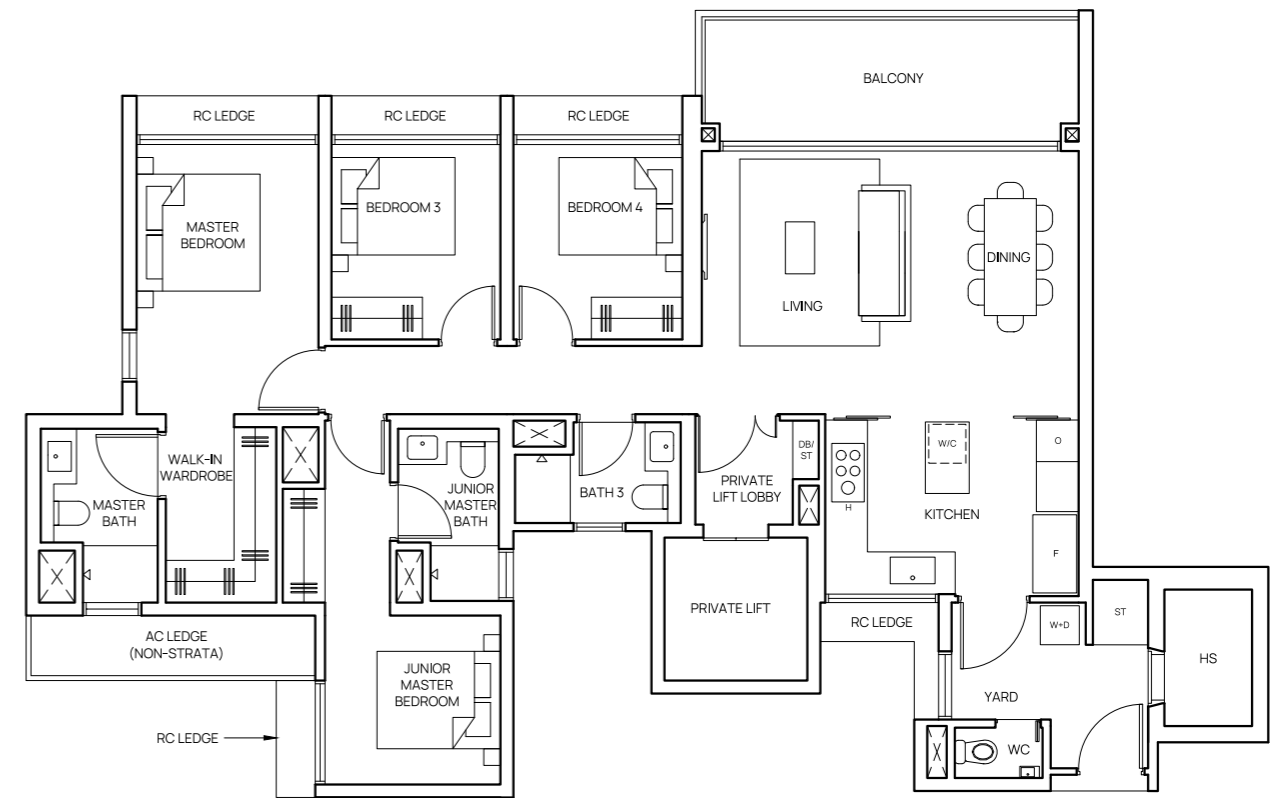
Areas include balcony where applicable. All AC ledges and RC ledges (non-load bearing) are excluded from strata area. The plans are subjected to change as may be required by relevant authorities. All areas and measurements stated herein as approximate and subject to final survey.



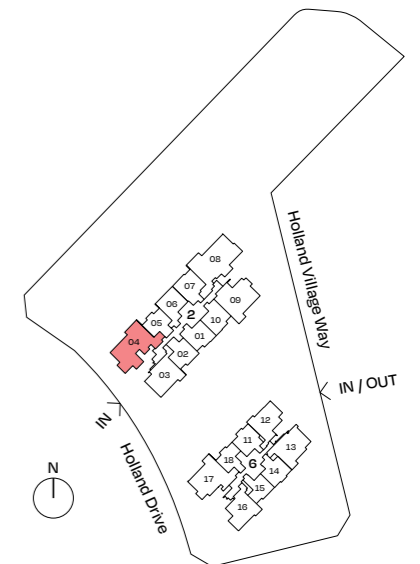
4-Bedroom Premium (with Private Lift)

TYPE DP1

136 sqm (1,464 sqft)
#04-04 to #40-04



Areas include balcony where applicable. All AC ledges and RC ledges (non-load bearing) are excluded from strata area. The plans are subjected to change as may be required by relevant authorities. All areas and measurements stated herein as approximate and subject to final survey.

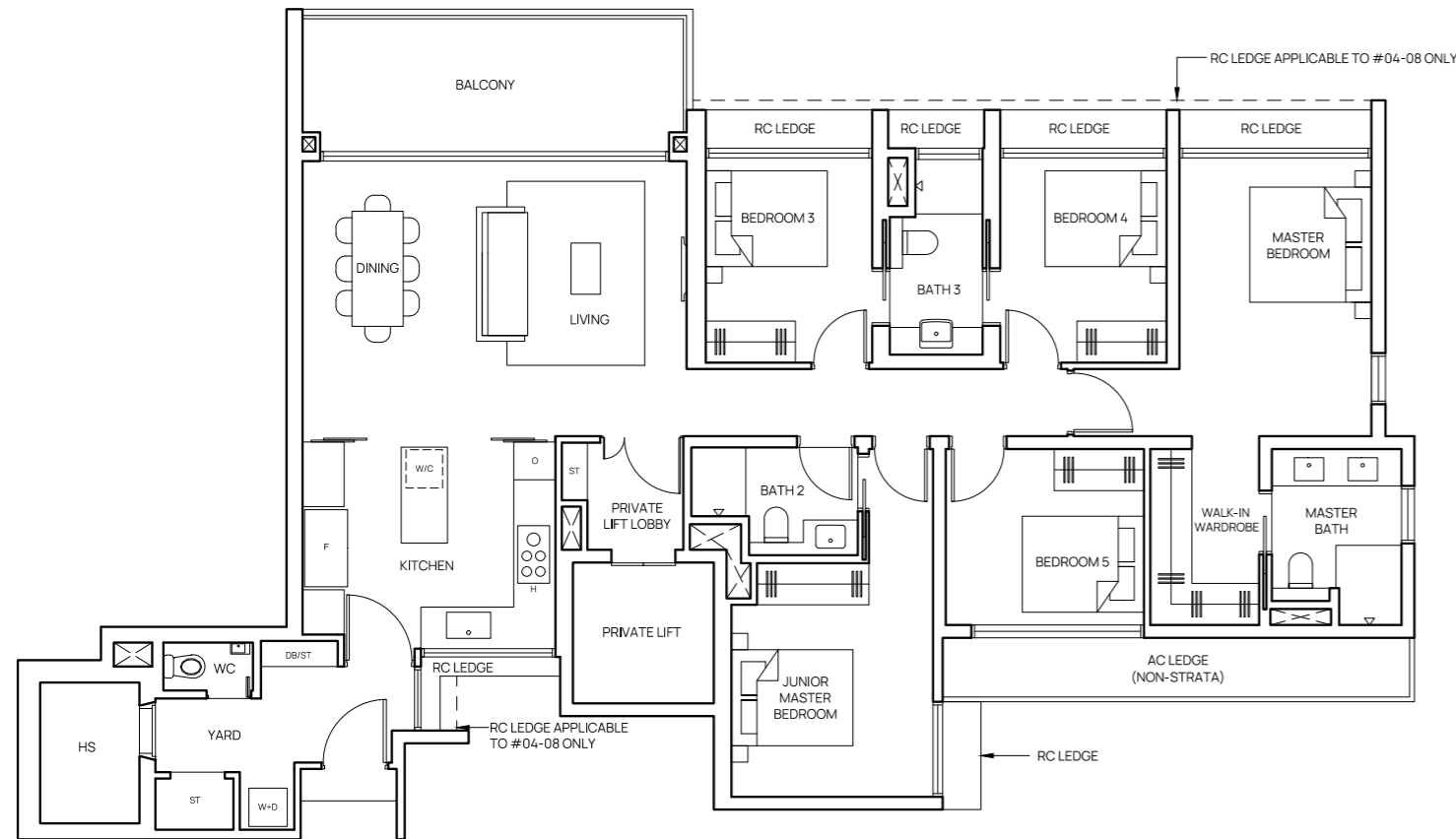


5-Bedroom Premium (with Private Lift)

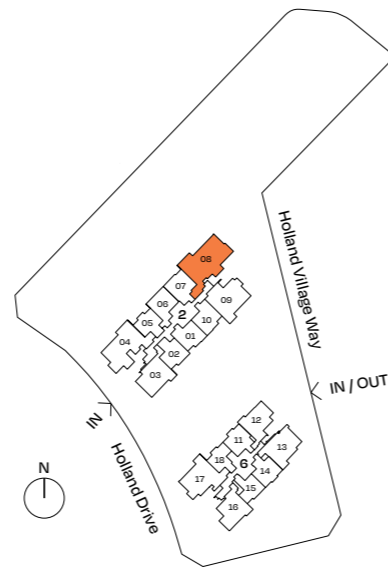
TYPE E1

164 sqm (1,765 sqft)

#04-08 to #40-08



0 1 2 3 4 5m



Areas include balcony where applicable. All AC ledges and RC ledges (non-load bearing) are excluded from strata area. The plans are subjected to change as may be required by relevant authorities. All areas and measurements stated herein as approximate and subject to final survey.



FOR ILLUSTRATION ONLY

Exceptional Fittings & Furnishings



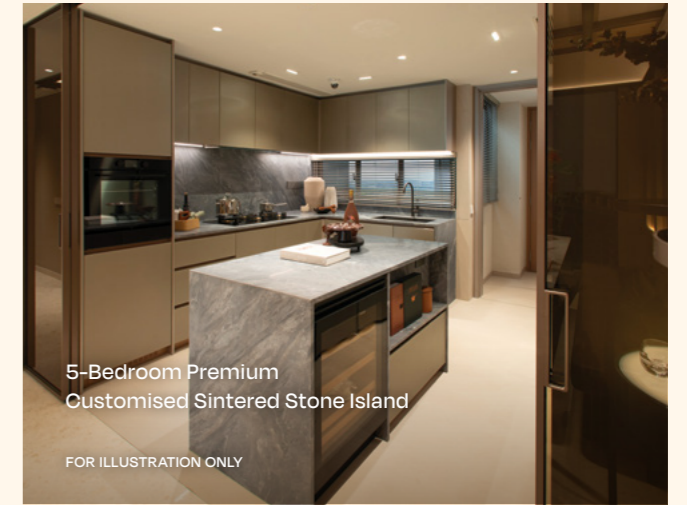
V-ZUG Kitchen Appliances
FOR ILLUSTRATION ONLY



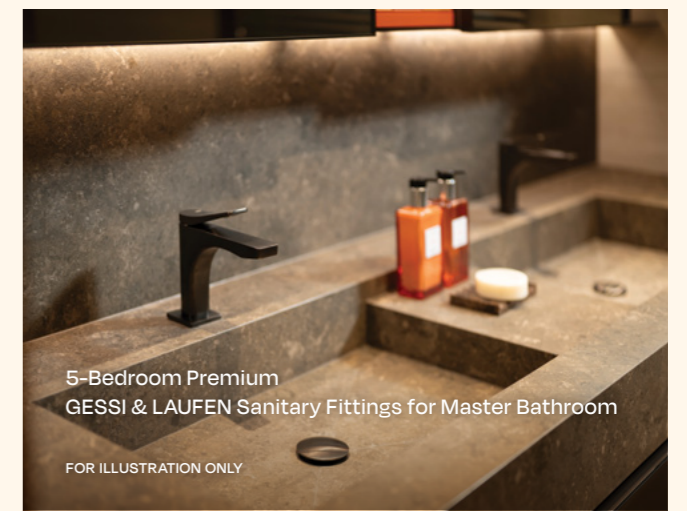
5-Bedroom Premium
Liebherr Fridge and Freezer
FOR ILLUSTRATION ONLY



5-Bedroom Premium
Walk-in Wardrobe for Master Bedroom
FOR ILLUSTRATION ONLY



5-Bedroom Premium
Customised Sintered Stone Island
FOR ILLUSTRATION ONLY



5-Bedroom Premium
GESSI & LAUFEN Sanitary Fittings for Master Bathroom
FOR ILLUSTRATION ONLY

A brilliant configuration of state-of-the-art fixtures and sustainably sensible appliances keeps everything in place.

KITCHEN APPLIANCES



LIEBHERR

SANITARY WARES & FITTINGS

LAUFEN

BLANCO

hansgrohe

GESSI

(2 - 3 BEDROOM UNIT TYPES)

(4 - 5 BEDROOM UNIT TYPES)