

# Unit Plans – 1 Bedroom

## Type A1

42 sqm / 452 sqft

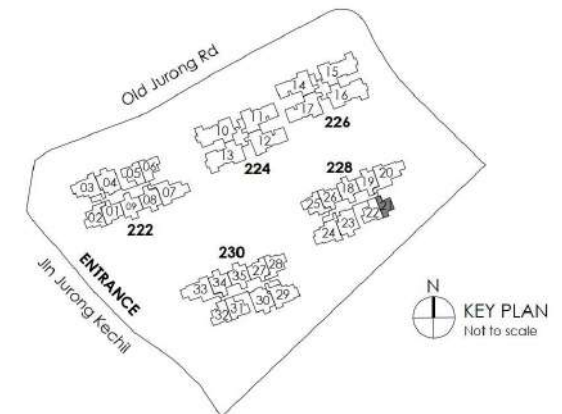
### Block 228

#01-21 to #10-21



#### Legend (Where Applicable):

- |                         |                        |
|-------------------------|------------------------|
| F - Fridge              | WC - Water Closet      |
| W/D - Washer cum Dryer  | HS - Household Shelter |
| W - Washer              | WF - Wine Fridge       |
| D - Dryer               |                        |
| DB - Distribution Board |                        |



# Unit Plans – 2 Bedrooms

SHOW UNIT

## Type B1

63 sqm / 678 sqft

### Block 222

#01-05 to #10-05

#01-06\* to #10-06\*

### Block 228

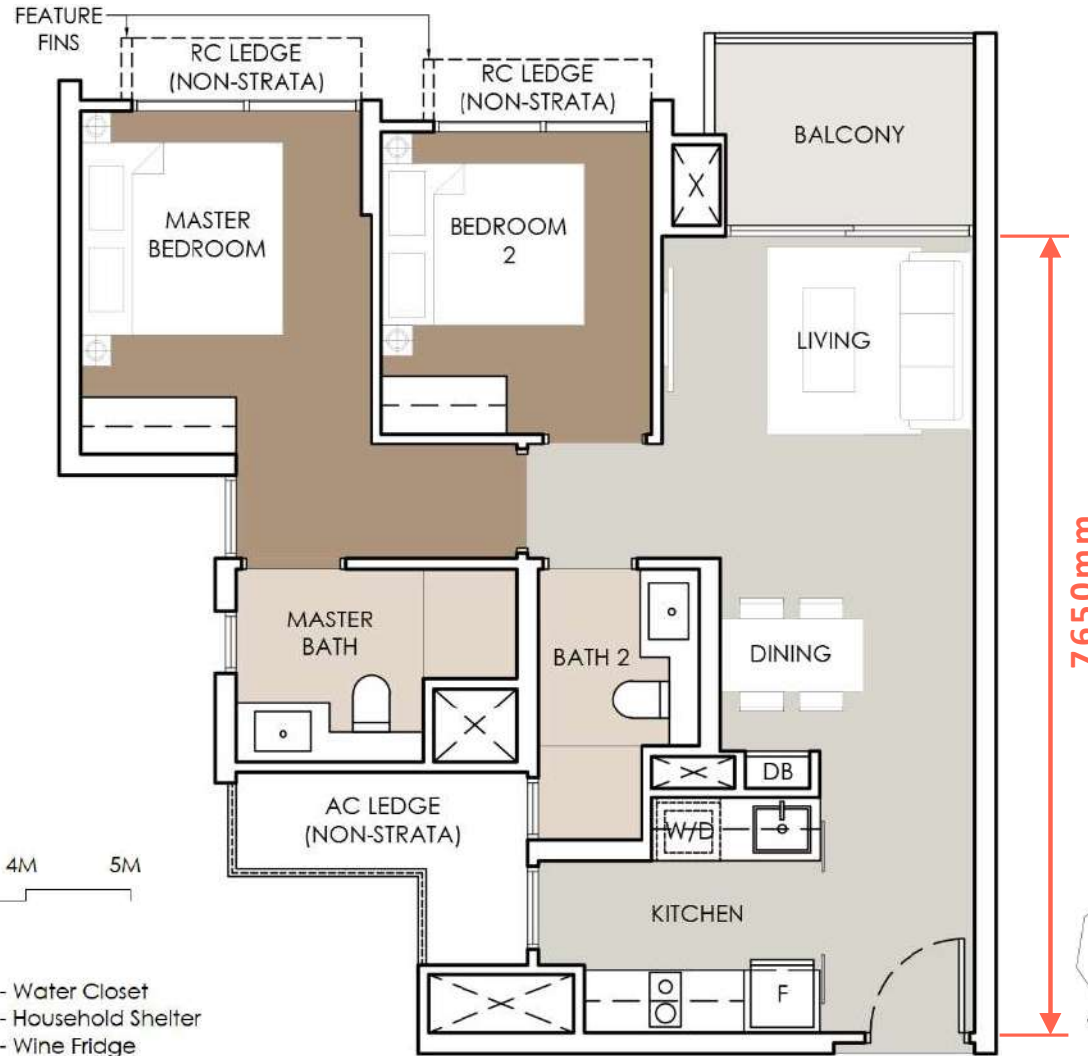
#01-22\* to #10-22\*

### Block 230

#01-31 to #10-31

#01-32\* to #10-32\*

\*Mirror Image

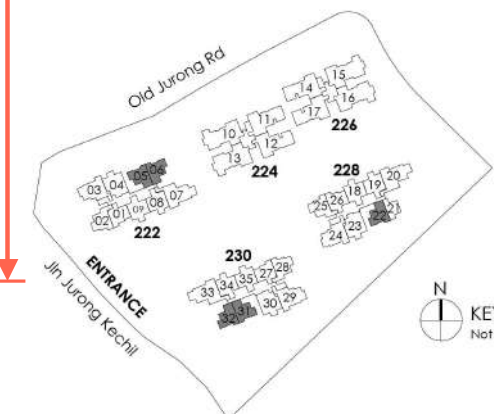


0 1M 2M 3M 4M 5M

### Legend (Where Applicable):

- |                         |                        |
|-------------------------|------------------------|
| F - Fridge              | WC - Water Closet      |
| W/D - Washer cum Dryer  | HS - Household Shelter |
| W - Washer              | WF - Wine Fridge       |
| D - Dryer               |                        |
| DB - Distribution Board |                        |

7650mm



N  
KEY PLAN  
Not to scale

# Unit Plans – 2 Bedrooms

## Type B2

63 sqm / 678 sqft

**Block 222**  
#01-01 to #10-01

**Block 228**  
#01-26\* to #10-26\*

**Block 230**  
#01-27 to #10-27

\*Mirror Image

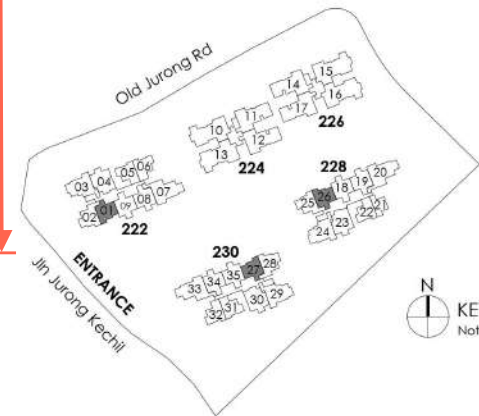


8100mm

0 1M 2M 3M 4M 5M

**Legend (Where Applicable):**

- |                         |                        |
|-------------------------|------------------------|
| F - Fridge              | WC - Water Closet      |
| W/D - Washer cum Dryer  | HS - Household Shelter |
| W - Washer              | WF - Wine Fridge       |
| D - Dryer               |                        |
| DB - Distribution Board |                        |



N  
KEY PLAN  
Not to scale

# Unit Plans – 2 Bedrooms

## Type B3

68 sqm / 732 sqft

### Block 222

#01-02 to #10-02

### Block 228

#01-25\* to #10-25\*

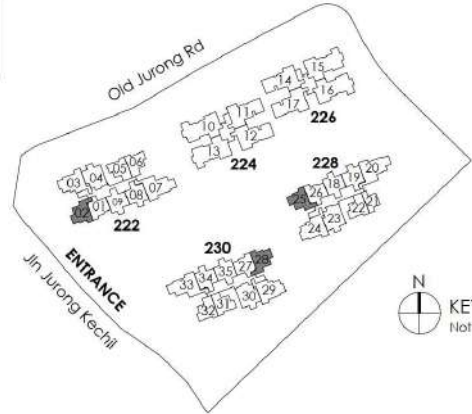
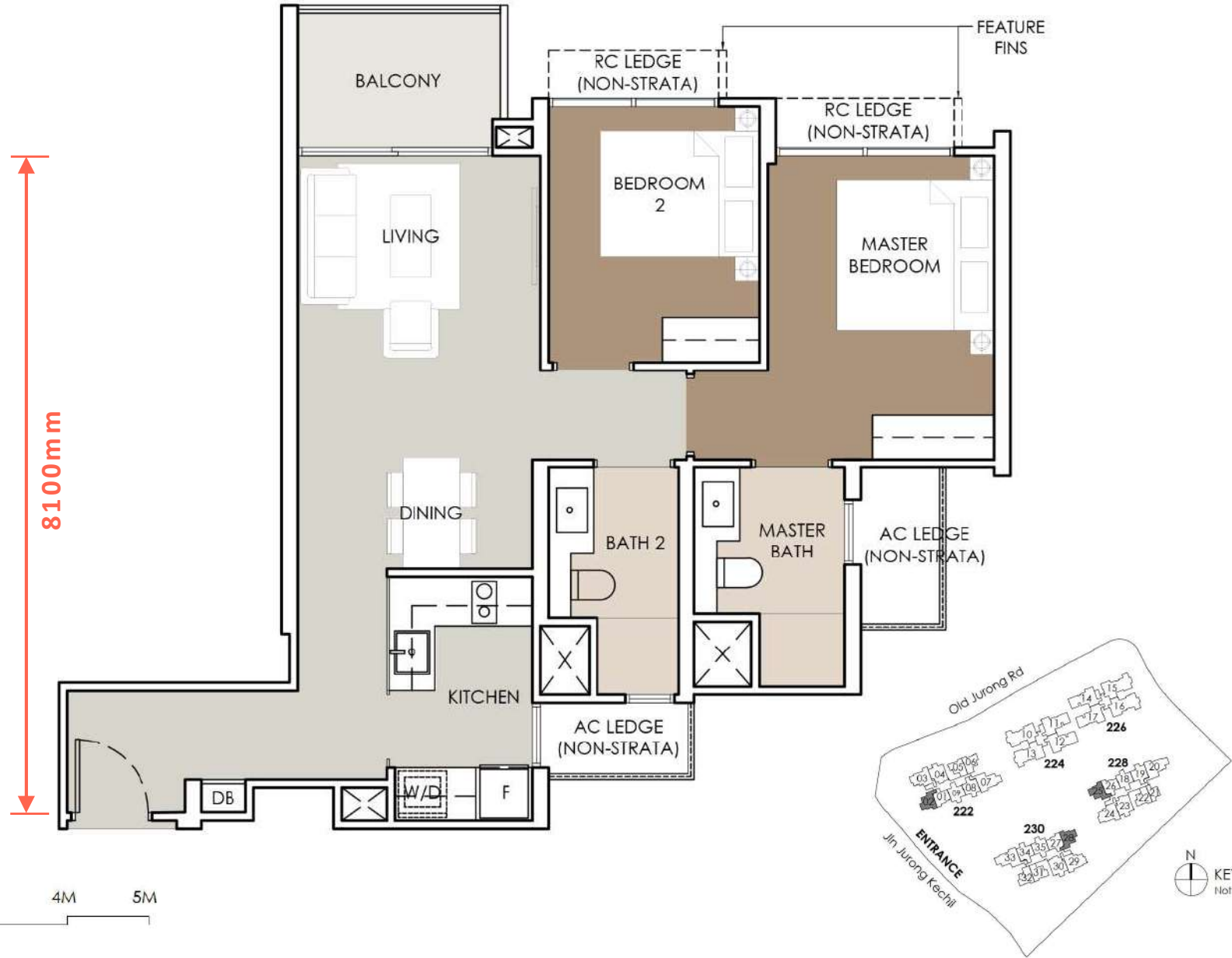
### Block 230

#01-28 to #10-28

\*Mirror Image

### Legend (Where Applicable):

- F - Fridge
- W/D - Washer cum Dryer
- W - Washer
- D - Dryer
- DB - Distribution Board
- WC - Water Closet
- HS - Household Shelter
- WF - Wine Fridge



# Unit Plans – 2 Bedrooms + Study

## Type B4 (Dumbbell Unit)

71 sqm / 764 sqft

### Block 222

#01-08 to #10-08

### Block 228

#01-19\* to #10-19\*

### Block 230

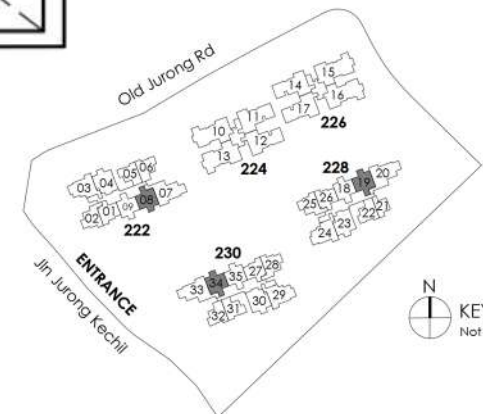
#01-34 to #10-34

\*Mirror Image

### Legend (Where Applicable):

- F - Fridge
- W/D - Washer cum Dryer
- W - Washer
- D - Dryer
- DB - Distribution Board
- WC - Water Closet
- HS - Household Shelter
- WF - Wine Fridge

9750 mm



# Unit Plans – 2 Bedrooms + Study

## Type B4A (Dumbbell Unit)

72 sqm / 775 sqft

### Block 222

#02-09 to #10-09

### Block 228

#02-18\* to #10-18\*

### Block 230

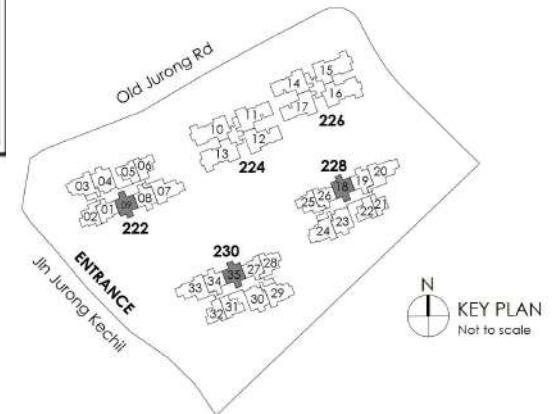
#02-35 to #10-35

\*Mirror Image

### Legend (Where Applicable):

- F - Fridge
- W/D - Washer cum Dryer
- W - Washer
- D - Dryer
- DB - Distribution Board
- WC - Water Closet
- HS - Household Shelter
- WF - Wine Fridge

9750mm



0 1M 2M 3M 4M 5M

# Unit Plans – 3 Bedrooms

## Type C1 (Dumbbell Unit)

81 sqm / 872 sqft

**Block 222**  
#01-04 to #10-04

**Block 228**  
#01-23\* to #10-23\*

**Block 230**  
#01-30 to #10-30

\*Mirror Image



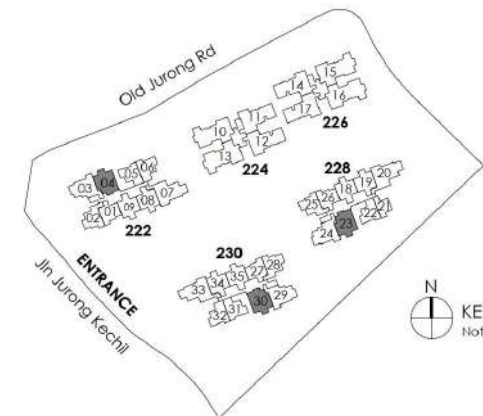
9575 mm



Legend (Where Applicable):

- |                         |                        |
|-------------------------|------------------------|
| F - Fridge              | WC - Water Closet      |
| W/D - Washer cum Dryer  | HS - Household Shelter |
| W - Washer              | WF - Wine Fridge       |
| D - Dryer               |                        |
| DB - Distribution Board |                        |

Area includes balcony and PES (where applicable). All AC ledges, RC ledges and non-strata void are excluded from the strata area. The above plans and illustrations are subject to change as may be required by the relevant authorities. All areas and measurements stated herein are approximate and subject to final survey. The balcony and PES shall not be enclosed unless with the approved balcony screen. For an illustration of the approved balcony screen, please refer to the diagram annexed hereto and marked "Annexure 1".



N  
KEY PLAN  
Not to scale

# Unit Plans – 3 Bedrooms

## Type C2

87 sqm / 936 sqft

**Block 222**  
#01-03 to #10-03

**Block 228**  
#01-24\* to #10-24\*

**Block 230**  
#01-29 to #10-29

\*Mirror Image



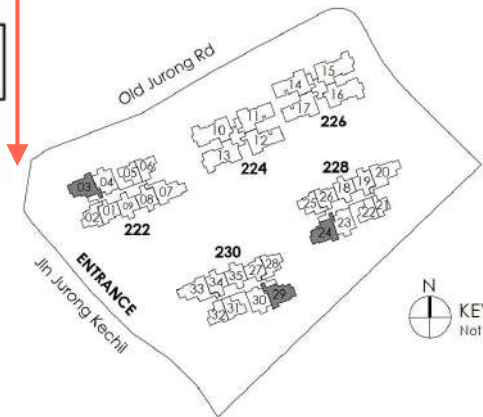
10125m m



Legend (Where Applicable):

- |                         |                        |
|-------------------------|------------------------|
| F - Fridge              | WC - Water Closet      |
| W/D - Washer cum Dryer  | HS - Household Shelter |
| W - Washer              | WF - Wine Fridge       |
| D - Dryer               |                        |
| DB - Distribution Board |                        |

Area includes balcony and PES (where applicable). All AC ledges, RC ledges and non-strata void are excluded from the strata area. The above plans and illustrations are subject to change as may be required by the relevant authorities. All areas and measurements stated herein are approximate and subject to final survey. The balcony and PES shall not be enclosed unless with the approved balcony screen. For an illustration of the approved balcony screen, please refer to the diagram annexed hereto and marked "Annexure 1".



# Unit Plans – 3 Bedrooms

## Type C3

103 sqm / 1109 sqft

### Block 222

#01-07 to #10-07

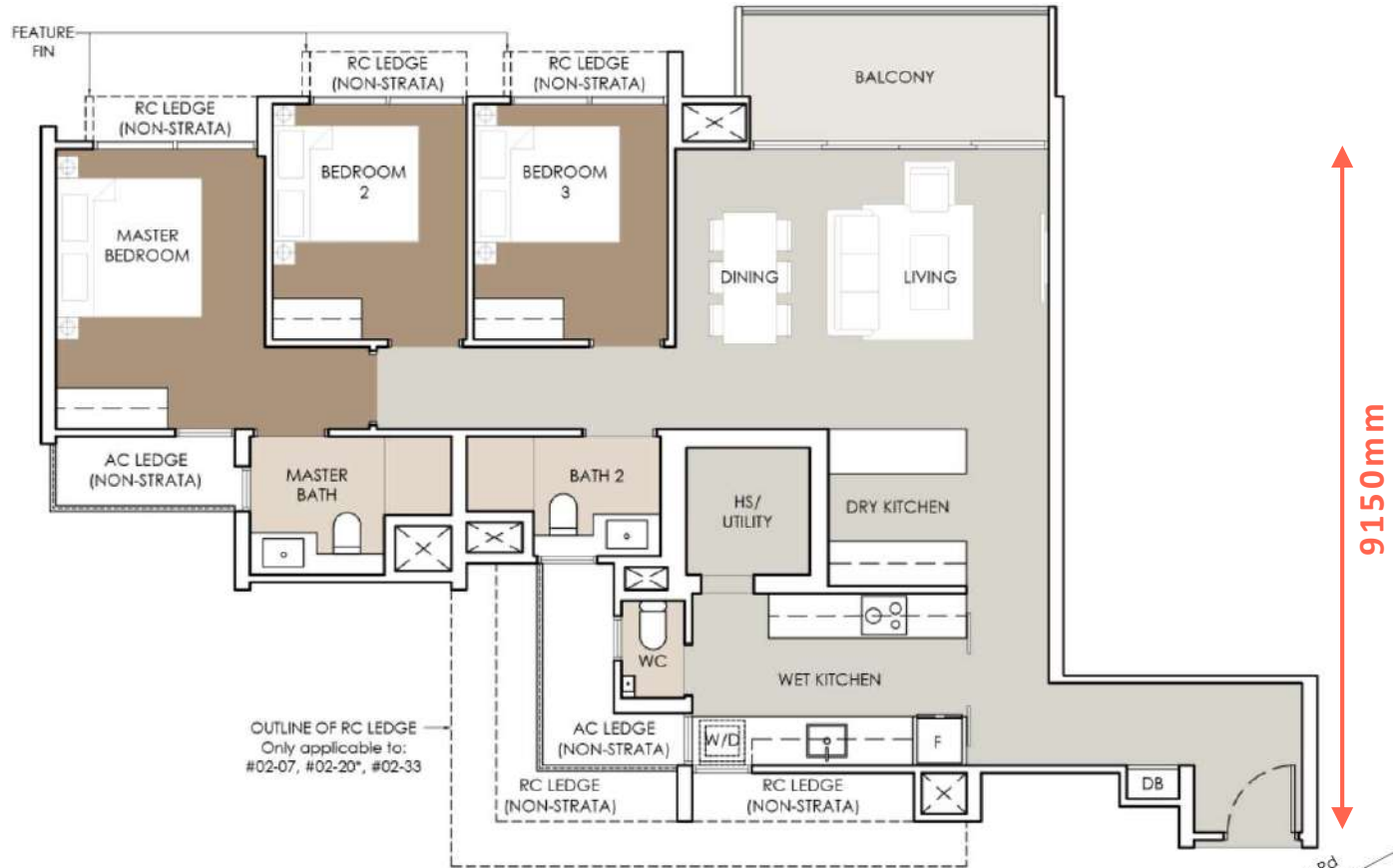
### Block 228

#01-20\* to #10-20\*

### Block 230

#01-33 to #10-33

\*Mirror Image



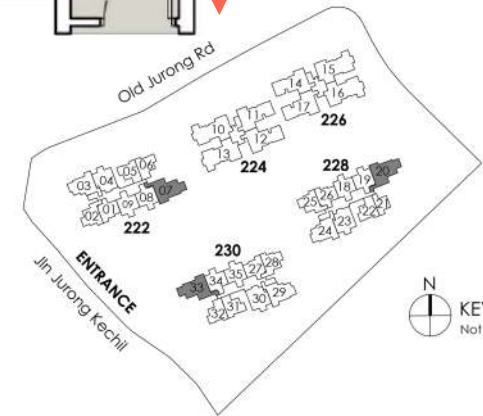
SHOW UNIT



Legend (Where Applicable):

- |                         |                        |
|-------------------------|------------------------|
| F - Fridge              | WC - Water Closet      |
| W/D - Washer cum Dryer  | HS - Household Shelter |
| W - Washer              | WF - Wine Fridge       |
| D - Dryer               |                        |
| DB - Distribution Board |                        |

Area includes balcony and PES (where applicable). All AC ledges, RC ledges and non-strata void are excluded from the strata area. The above plans and illustrations are subject to change as may be required by the relevant authorities. All areas and measurements stated herein are approximate and subject to final survey. The balcony and PES shall not be enclosed unless with the approved balcony screen. For an illustration of the approved balcony screen, please refer to the diagram annexed hereto and marked "Annexure 1".



# Unit Plans – 3 Bedrooms + Study

## Type C4

117 sqm / 1259 sqft

### Block 224

#01-11\* to #10-11\*  
#01-12 to #10-12

### Block 226

#01-14 to #10-14  
#01-17\* to #10-17\*

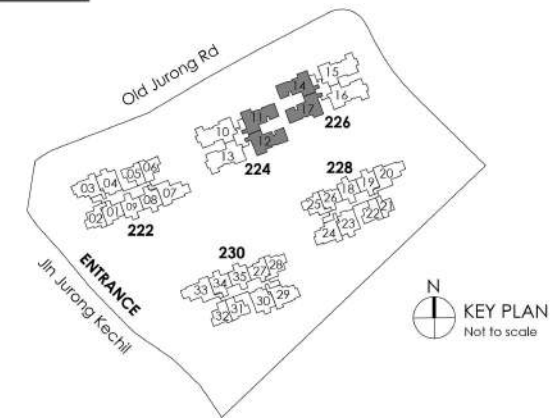
\*Mirror Image



### Legend (Where Applicable):

F - Fridge	WC - Water Closet
W/D - Washer cum Dryer	HS - Household Shelter
W - Washer	WF - Wine Fridge
D - Dryer	
DB - Distribution Board	

Area includes balcony and PES (where applicable). All AC ledges, RC ledges and non-strata void are excluded from the strata area. The above plans and illustrations are subject to change as may be required by the relevant authorities. All areas and measurements stated herein are approximate and subject to final survey. The balcony and PES shall not be enclosed unless with the approved balcony screen. For an illustration of the approved balcony screen, please refer to the diagram annexed hereto and marked "Annexure 1".



# Unit Plans – 4 Bedrooms + Study

## Type D1

135 sqm / 1453 sqft

### Block 224

#01-13 to #10-13

### Block 226

#01-16\* to #10-16\*

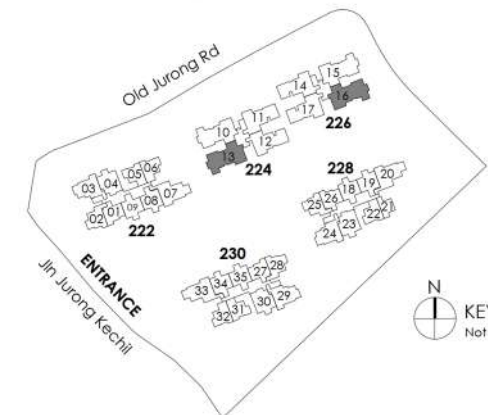
\*Mirror Image



Legend (Where Applicable):

F - Fridge	WC - Water Closet
W/D - Washer cum Dryer	HS - Household Shelter
W - Washer	WF - Wine Fridge
D - Dryer	
DB - Distribution Board	

Area includes balcony and PES (where applicable). All AC ledges, RC ledges and non-strata void are excluded from the strata area. The above plans and illustrations are subject to change as may be required by the relevant authorities. All areas and measurements stated herein are approximate and subject to final survey. The balcony and PES shall not be enclosed unless with the approved balcony screen. For an illustration of the approved balcony screen, please refer to the diagram annexed hereto and marked "Annexure 1".



# Unit Plans – 4 Bedrooms + Study

## Type D1A

135 sqm / 1453 sqft

### Block 224

#01-10 to #10-10

### Block 226

#01-15\* to #10-15\*

\*Mirror Image

SHOW UNIT



Legend (Where Applicable):

- |                         |                        |
|-------------------------|------------------------|
| F - Fridge              | WC - Water Closet      |
| W/D - Washer cum Dryer  | HS - Household Shelter |
| W - Washer              | WF - Wine Fridge       |
| D - Dryer               |                        |
| DB - Distribution Board |                        |

Area includes balcony and PES (where applicable). All AC ledges, RC ledges and non-strata void are excluded from the strata area. The above plans and illustrations are subject to change as may be required by the relevant authorities. All areas and measurements stated herein are approximate and subject to final survey. The balcony and PES shall not be enclosed unless with the approved balcony screen. For an illustration of the approved balcony screen, please refer to the diagram annexed hereto and marked "Annexure 1".

