

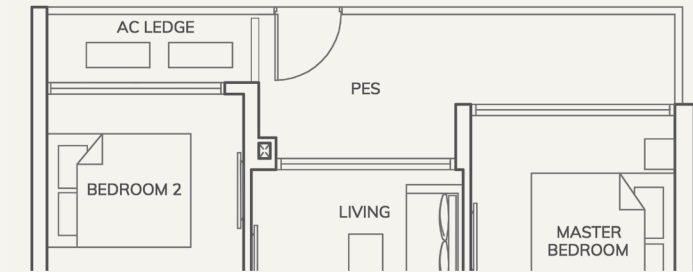
181 HAIG ROAD (S438780)

UNIT \ FLOOR	1	2	3	4	5	6	7	8
5	C1-PH	B2	A1	B3-PH	B3-PH	A1	B1	C2-PH
4	C1	B2	A1	B3	B3	A1	B1	C2
3	C1	B2	A1	B3	B3	A1	B1	C2
2	C1	B2	A1	B3	B3	A1	B1	C2
1	C1-P	B2-P	A1-P					

TYPE A1-P

83 SQ M / 893 SQ FT

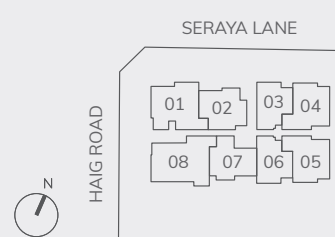
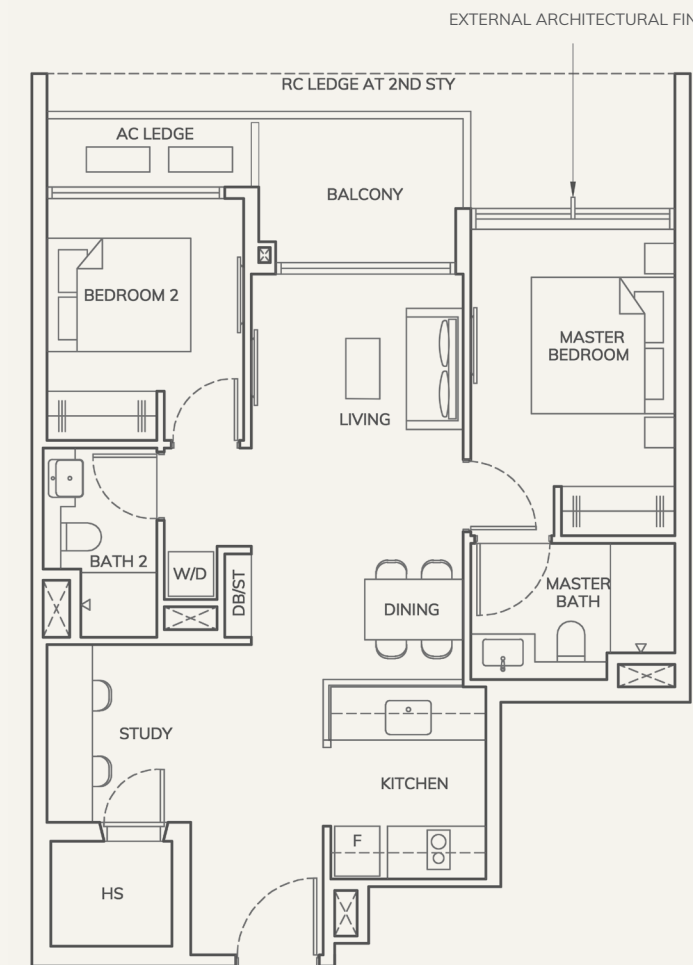
Unit(s):
#01-03



TYPE A1

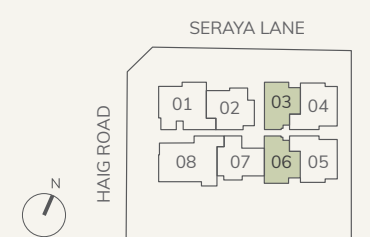
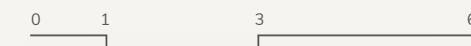
80 SQ M / 861 SQ FT

Unit(s):
#02-03 to #05-03
#02-06* to #05-06*



- A1 2-Bedroom + Study
- B1 3-Bedroom
- B2 3-Bedroom Deluxe
- B3 3-Bedroom Premium
- C1 4-Bedroom
- C2 4-Bedroom + Study

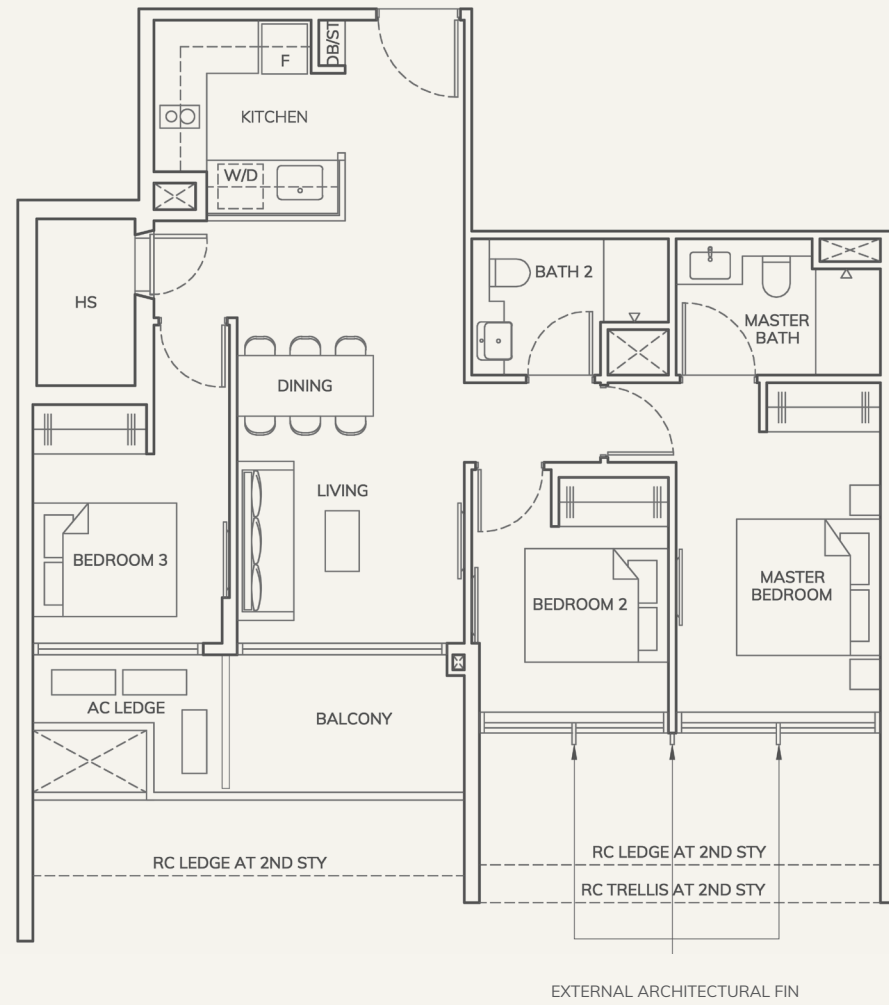
- LEGEND:
- F - Fridge
 - DB/ST - Distribution Board / Storage
 - W/D - Washer Dryer Combo
 - AC - Air Conditioner
 - HS - Household Shelter
 - WC - Water Closet
 - RC LEDGE - Reinforced Concrete Ledge (Non-Strata Area)
 - * - Mirrored Unit
 - VOID Space (Non - Strata Area)



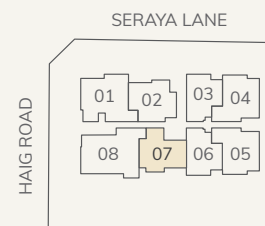
Areas include AC ledge, balcony, PES and strata void where applicable. The plans are subject to change as may be required by relevant authorities. All areas and measurements stated herein are approximate and subject to final survey.

TYPE B1
91 SQ M / 980 SQ FT

Unit(s):
#02-07 to #05-07



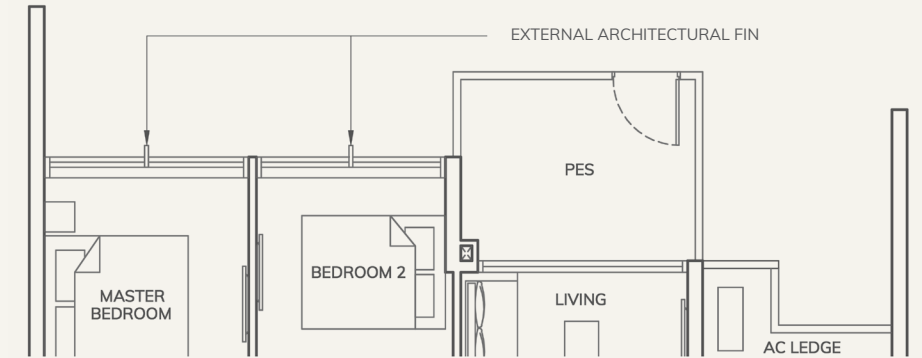
- LEGEND:
- F - Fridge
 - DB/ST - Distribution Board / Storage
 - W/D - Washer Dryer Combo
 - AC - Air Conditioner
 - HS - Household Shelter
 - WC - Water Closet
 - RC LEDGE - Reinforced Concrete Ledge (Non-Strata Area)
 - * - Mirrored Unit
 - ☒ - VOID Space (Non - Strata Area)



Areas include AC ledge, balcony, PES and strata void where applicable. The plans are subject to change as may be required by relevant authorities. All areas and measurements stated herein are approximate and subject to final survey.

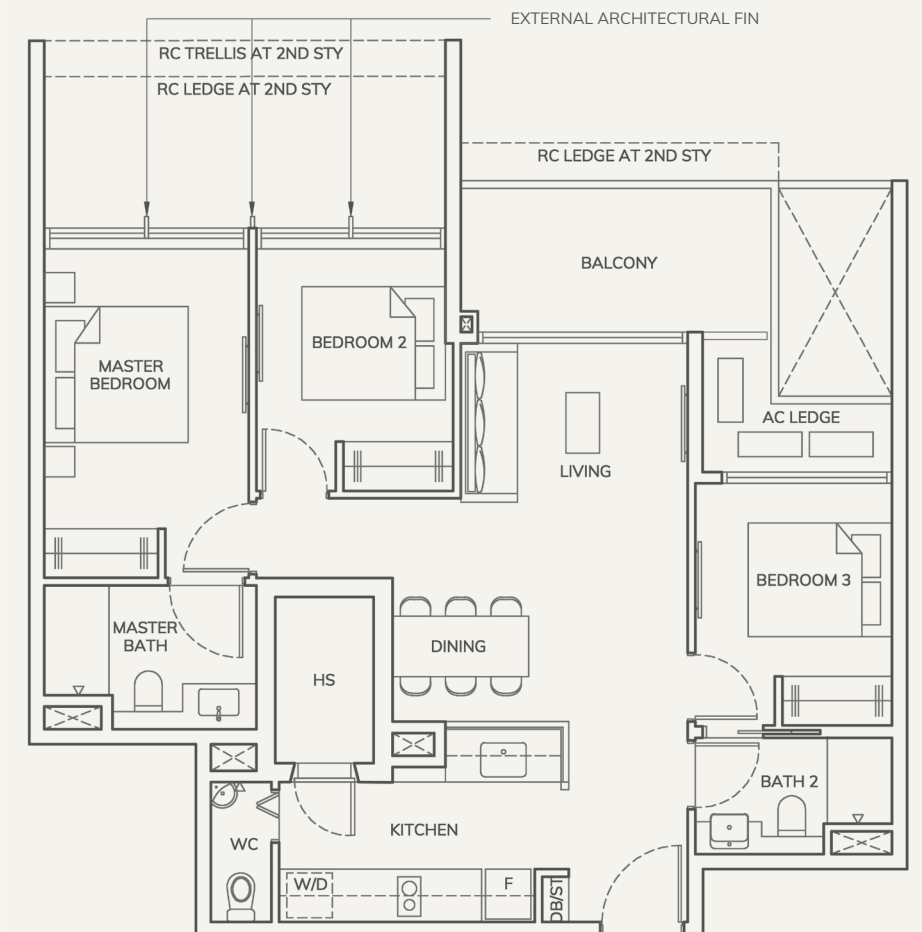
TYPE B2-P
95 SQ M / 1023 SQ FT

Unit(s):
#01-02

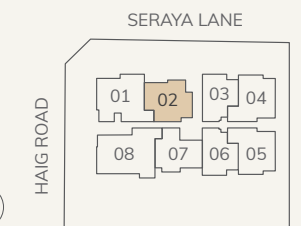
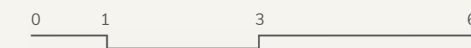


TYPE B2
95 SQ M / 1023 SQ FT

Unit(s):
#02-02 to #05-02



- LEGEND:
- F - Fridge
 - DB/ST - Distribution Board / Storage
 - W/D - Washer Dryer Combo
 - AC - Air Conditioner
 - HS - Household Shelter
 - WC - Water Closet
 - RC LEDGE - Reinforced Concrete Ledge (Non-Strata Area)
 - * - Mirrored Unit
 - ☒ - VOID Space (Non - Strata Area)



Areas include AC ledge, balcony, PES and strata void where applicable. The plans are subject to change as may be required by relevant authorities. All areas and measurements stated herein are approximate and subject to final survey.

TYPE B3

97 SQ M / 1044 SQ FT

Unit(s):

#02-04 to #04-04

#02-05* to #04-05*

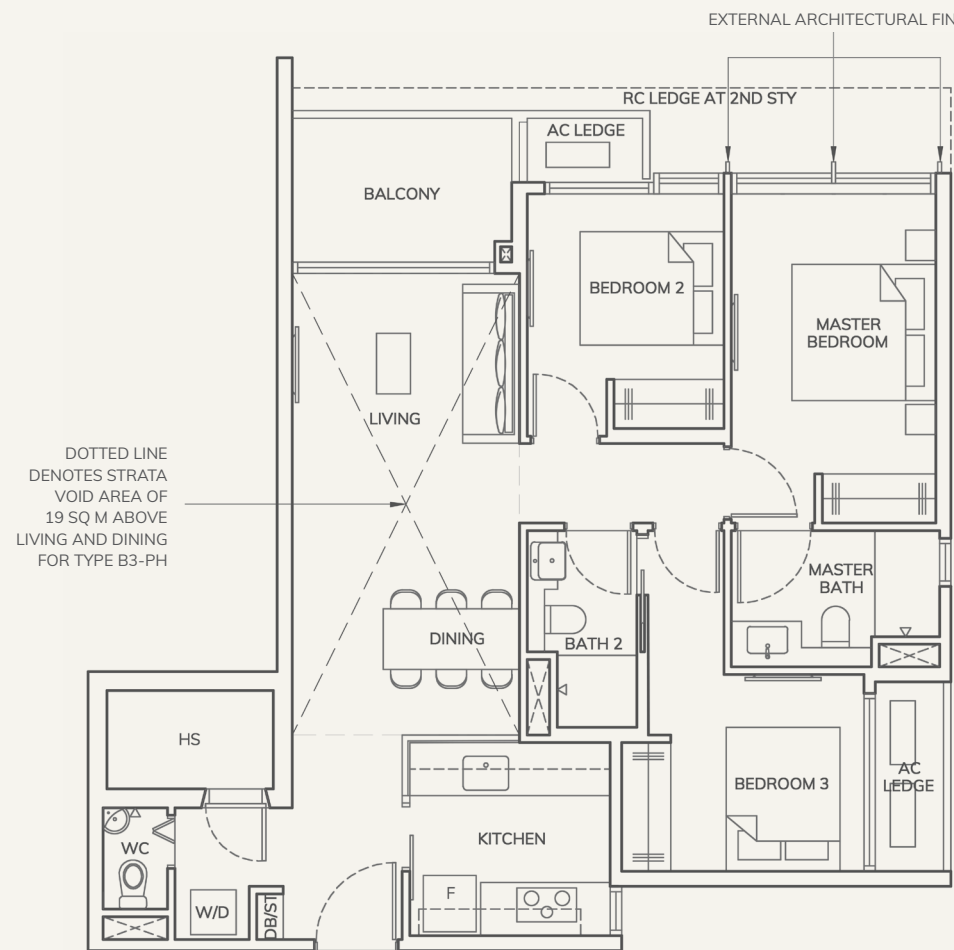
TYPE B3-PH

116 SQ M / 1249 SQ FT

Includes strata void area of 19 sq m above living and dining

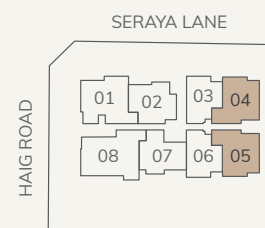
Unit(s):

#05-04 and #05-05*



DOTTED LINE DENOTES STRATA VOID AREA OF 19 SQ M ABOVE LIVING AND DINING FOR TYPE B3-PH

- LEGEND:
- F - Fridge
 - DB/ST - Distribution Board / Storage
 - W/D - Washer Dryer Combo
 - AC - Air Conditioner
 - HS - Household Shelter
 - WC - Water Closet
 - RC LEDGE - Reinforced Concrete Ledge (Non-Strata Area)
 - * - Mirrored Unit
 - ☒ - VOID Space (Non - Strata Area)



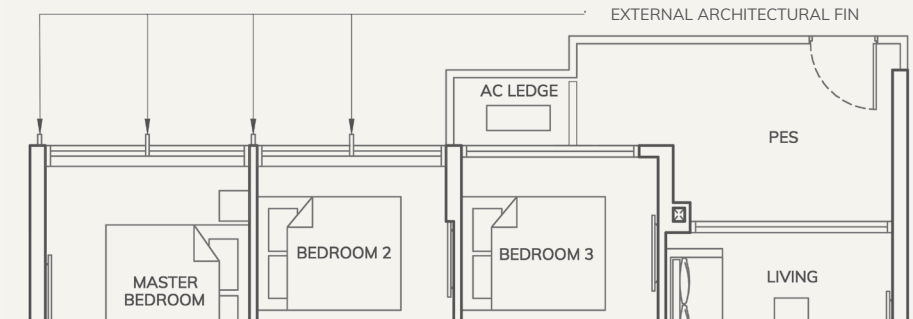
Areas include AC ledge, balcony, PES and strata void where applicable. The plans are subject to change as may be required by relevant authorities. All areas and measurements stated herein are approximate and subject to final survey.

TYPE C1-P

123 SQ M / 1324 SQ FT

Unit(s):

#01-01



TYPE C1

120 SQ M / 1292 SQ FT

Unit(s):

#02-01 to #04-01

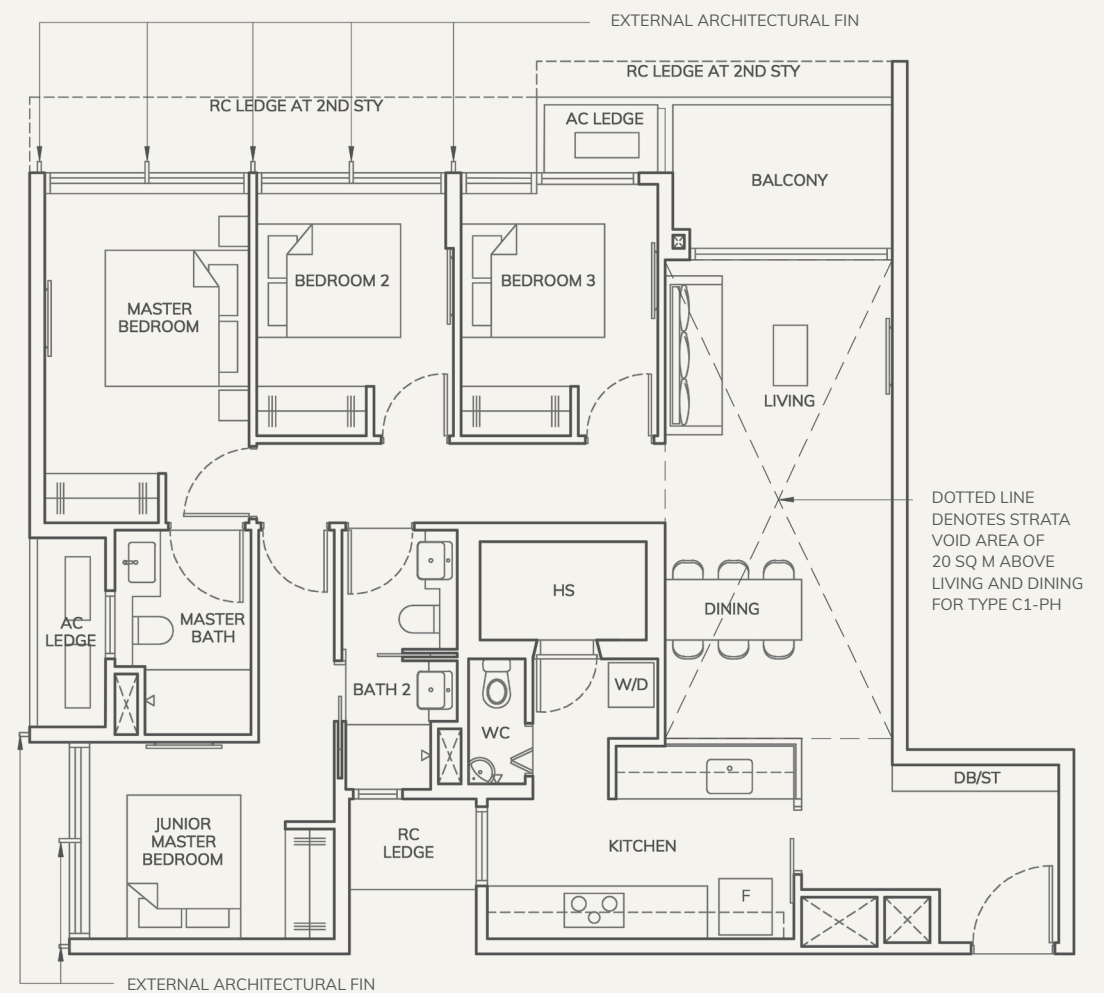
TYPE C1-PH

140 SQ M / 1507 SQ FT

Includes strata void area of 20 sq m above living and dining

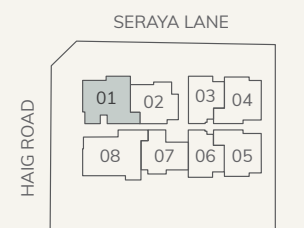
Unit(s):

#05-01



DOTTED LINE DENOTES STRATA VOID AREA OF 20 SQ M ABOVE LIVING AND DINING FOR TYPE C1-PH

- LEGEND:
- F - Fridge
 - DB/ST - Distribution Board / Storage
 - W/D - Washer Dryer Combo
 - AC - Air Conditioner
 - HS - Household Shelter
 - WC - Water Closet
 - RC LEDGE - Reinforced Concrete Ledge (Non-Strata Area)
 - * - Mirrored Unit
 - ☒ - VOID Space (Non - Strata Area)



Areas include AC ledge, balcony, PES and strata void where applicable. The plans are subject to change as may be required by relevant authorities. All areas and measurements stated herein are approximate and subject to final survey.

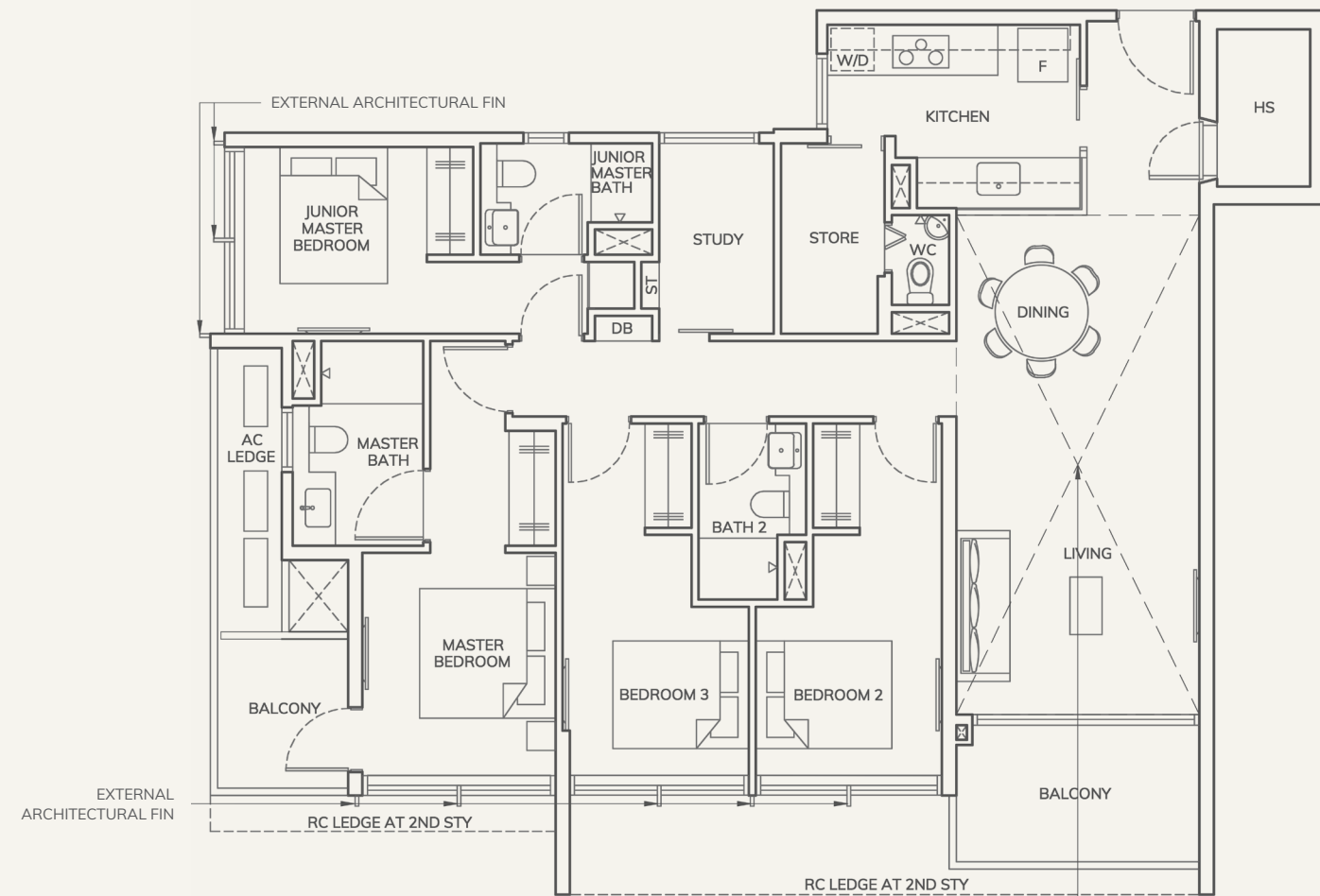
TYPE C2
141 SQ M / 1518 SQ FT

Unit(s):
#02-08 to #04-08

TYPE C2-PH
165 SQ M / 1776 SQ FT

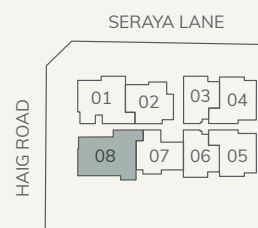
Includes strata void area of 24 sq m above living and dining

Unit(s):
#05-08



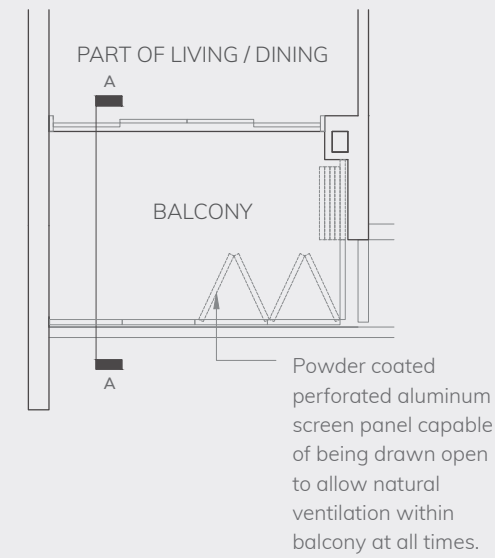
DOTTED LINE DENOTES STRATA VOID AREA OF 24 SQ M ABOVE LIVING AND DINING FOR TYPE C2-PH

- LEGEND:**
- F - Fridge
 - DB/ST - Distribution Board / Storage
 - W/D - Washer Dryer Combo
 - AC - Air Conditioner
 - HS - Household Shelter
 - WC - Water Closet
 - RC LEDGE - Reinforced Concrete Ledge (Non-Strata Area)
 - * - Mirrored Unit
 - ☐ - VOID Space (Non - Strata Area)

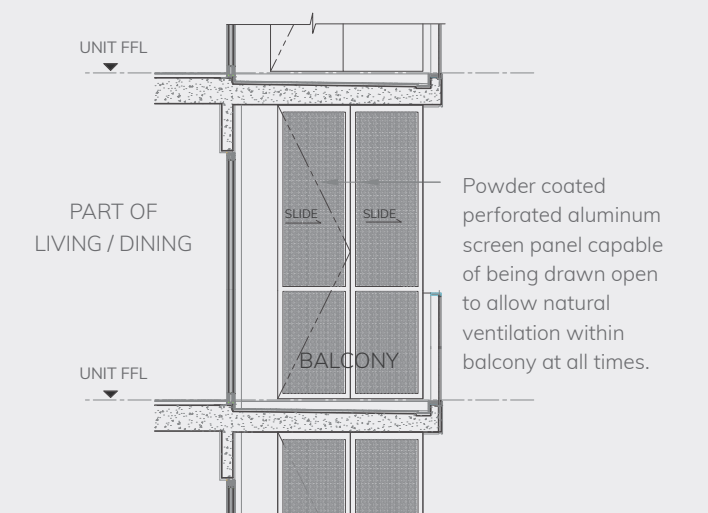


Areas include AC ledge, balcony, PES and strata void where applicable. The plans are subject to change as may be required by relevant authorities. All areas and measurements stated herein are approximate and subject to final survey.

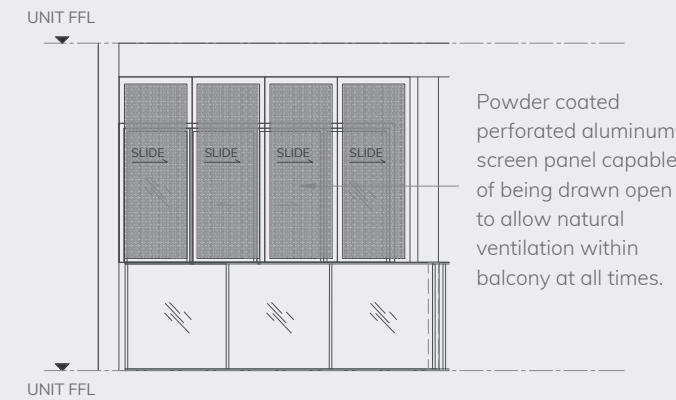
PLAN VIEW



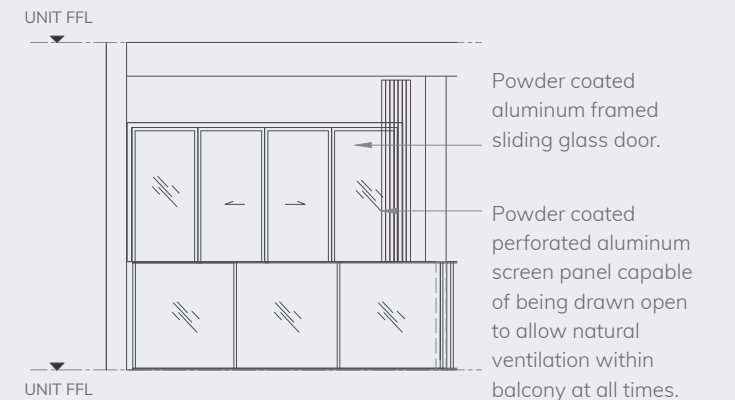
SECTION VIEW



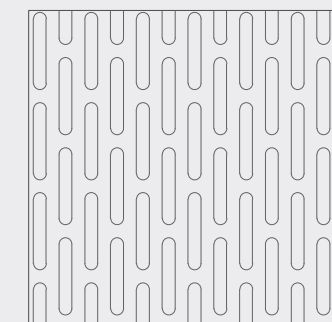
ELEVATION, CLOSE POSITION



ELEVATION, OPEN POSITION



SCREEN PATTERN



NOTES:

1. Balcony screen is not provided for this development (unless otherwise stated).
2. The balcony and Private Enclosed Space (PES) shall not be enclosed unless the screen is approved by the relevant authorities.
3. Final selection of material, colour and detailing of the screen is subject to MCST approval (when formed).
4. Approval from MCST (when formed) is required before installation.
5. Owner to engage their own contractor to install the screen or opt to pre-install the screen.
6. All installation fees to be borne by the owner.
7. Measurements are approximate only and subject to final survey.