

UNIT DISTRIBUTION CHART

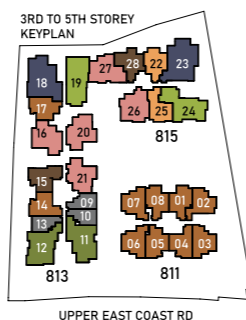
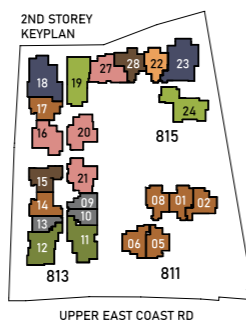
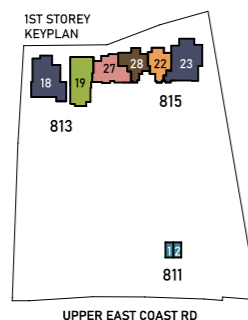
811 UPPER EAST COAST ROAD								
STACK \ FLOOR	01	02	03	04	05	06	07	08
05	B2a 69 sqm	B2f 70 sqm	B2e 70 sqm	B2b 70 sqm	B2c 70 sqm	B2d 70 sqm	B2d 70 sqm	B2a 69 sqm
04	B2a 69 sqm	B2f 70 sqm	B2e 70 sqm	B2b 70 sqm	B2c 70 sqm	B2d 70 sqm	B2d 70 sqm	B2a 69 sqm
03	B2a 69 sqm	B2f 70 sqm	B2e 70 sqm	B2b 70 sqm	B2c 70 sqm	B2d 70 sqm	B2d 70 sqm	B2a 69 sqm
02	B2a 69 sqm	B2f 70 sqm			B2c 70 sqm	B2d 70 sqm		B2a 69 sqm
01	SHOP 1 16 sqm	SHOP 2 16 sqm	CARPARK					

813 UPPER EAST COAST ROAD													
STACK \ FLOOR	09	10	11	12	13	14	15	16	17	18	19	20	21
05	A1 46 sqm	A1 46 sqm	E2a 116 sqm	E2b 116 sqm	A1 46 sqm	B2b 70 sqm	C1 75 sqm	D1 91 sqm	B2c 70 sqm	F1 142 sqm	E1a 116 sqm	D2 91 sqm	D2 91 sqm
04	A1 46 sqm	A1 46 sqm	E2a 116 sqm	E2b 116 sqm	A1 46 sqm	B2b 70 sqm	C1 75 sqm	D1 91 sqm	B2c 70 sqm	F1 142 sqm	E1a 116 sqm	D2 91 sqm	D2 91 sqm
03	A1 46 sqm	A1 46 sqm	E2a 116 sqm	E2b 116 sqm	A1 46 sqm	B2b 70 sqm	C1 75 sqm	D1 91 sqm	B2c 70 sqm	F1 142 sqm	E1a 116 sqm	D2 91 sqm	D2 91 sqm
02	A1 46 sqm	A1 46 sqm	E2a 116 sqm	E2b 116 sqm	A1 46 sqm	B2b 70 sqm	C1 75 sqm	D1 91 sqm	B2c 70 sqm	F1 142 sqm	E1a 116 sqm	D2 91 sqm	D2 91 sqm
01	CARPARK									F1-G 142 sqm	E1a-G 116 sqm	CARPARK	

815 UPPER EAST COAST ROAD							
STACK \ FLOOR	22	23	24	25	26	27	28
05	B1a 71 sqm	F2 142 sqm	E1b 116 sqm	B1b 72 sqm	D4 96 sqm	D3 96 sqm	C2 77 sqm
04	B1a 71 sqm	F2 142 sqm	E1b 116 sqm	B1b 72 sqm	D4 96 sqm	D3 96 sqm	C2 77 sqm
03	B1a 71 sqm	F2 142 sqm	E1b 116 sqm	B1b 72 sqm	D4 96 sqm	D3 96 sqm	C2 77 sqm
02	B1a 71 sqm	F2 142 sqm	E1b 116 sqm			D3 96 sqm	C2 77 sqm
01	B1a-G 71 sqm	F2-G 142 sqm	CARPARK			D3-G 96 sqm	C2-G 77 sqm

LEGEND

- 1 BEDROOM + FLEXI
- 2 BEDROOM
- 2 BEDROOM + FLEXI
- 2 BEDROOM + GUEST
- 3 BEDROOM + FLEXI
- 4 BEDROOM
- 4 BEDROOM + FLEXI
- 5 BEDROOM
- SHOP



SHOP FLOOR PLAN

SHOP 1

BLOCK 811
16 SQM

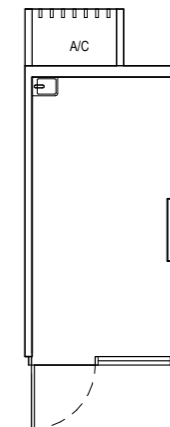
#01-01



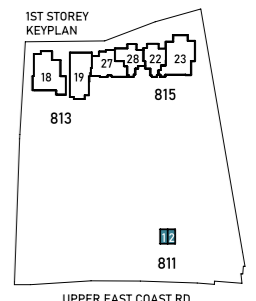
SHOP 2

BLOCK 811
16 SQM

#01-02



ALL FLOOR AREAS INDICATED ARE INCLUSIVE OF AC LEDGE.
ALL FLOOR AREAS ARE ESTIMATE ONLY AND SUBJECT TO FINAL SURVEY.
ALL FLOOR PLANS ARE SUBJECT TO CHANGES AS MAY BE REQUIRED OR APPROVED BY RELEVANT AUTHORITIES.

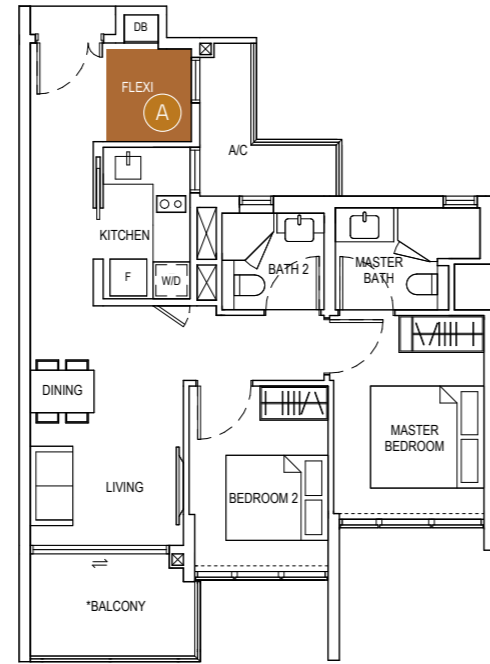


FLEXI SPACE

2 BEDROOM + FLEXI TYPE B2e

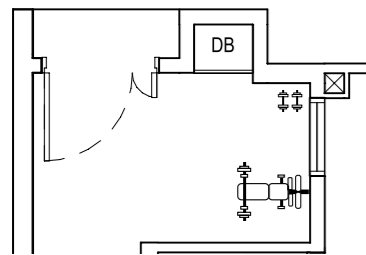
Our house designs consciously integrate a flexible layout to give residents more control over their living quarters. With this purposeful addition of a flexi space, this heritage home sees to a household's growth—where adaptations are endlessly possible.

ORIGINAL LAYOUT

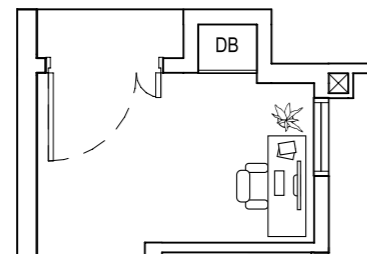


CREATIVE USE OF SPACE

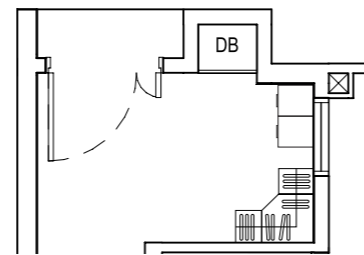
- A** Adapt this flexi space into a personal gym, recreation area, or storage space. Slightly isolated from the rest of the home, it is an ideal quiet space for moments of relaxation or concentration.



PERSONAL GYM



RECREATION AREA



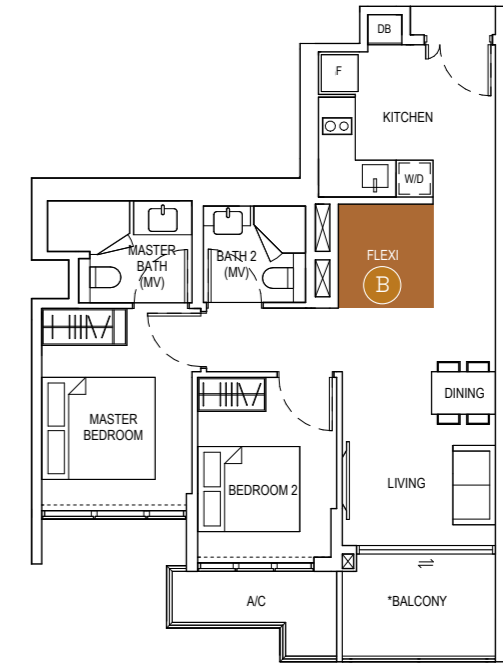
STORAGE SPACE

ALL FLOOR AREAS INDICATED ARE INCLUSIVE OF AC LEDGE AND BALCONY.
ALL FLOOR AREAS ARE ESTIMATE ONLY AND SUBJECT TO FINAL SURVEY.
ALL FLOOR PLANS ARE SUBJECT TO CHANGES AS MAY BE REQUIRED OR APPROVED BY RELEVANT AUTHORITIES.
* THE BALCONY SHALL NOT BE ENCLOSED. ONLY APPROVED BALCONY SCREENS ARE TO BE USED.
FOR AN ILLUSTRATION OF THE APPROVED BALCONY SCREEN, PLEASE REFER TO ANNEX A OF THIS BROCHURE.

FLEXI SPACE

2 BEDROOM + FLEXI TYPE B2b

ORIGINAL LAYOUT



FLEXIBLE SPACE FOR EVERYONE

- B** Next to the living and dining area, this flexi space is perfect for quality time with friends and family. Treat it as an extension for hosting or a playpen. Alternatively, configure it into an office separate from more intimate spaces like the bedrooms.



TYPE B2b
FLEXI

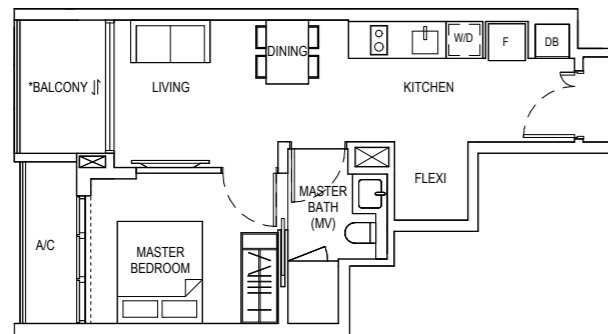
IMPRESSION ONLY

ALL FLOOR AREAS INDICATED ARE INCLUSIVE OF AC LEDGE AND BALCONY.
ALL FLOOR AREAS ARE ESTIMATE ONLY AND SUBJECT TO FINAL SURVEY.
ALL FLOOR PLANS ARE SUBJECT TO CHANGES AS MAY BE REQUIRED OR APPROVED BY RELEVANT AUTHORITIES.
* THE BALCONY SHALL NOT BE ENCLOSED. ONLY APPROVED BALCONY SCREENS ARE TO BE USED.
FOR AN ILLUSTRATION OF THE APPROVED BALCONY SCREEN, PLEASE REFER TO ANNEX A OF THIS BROCHURE.

1 BEDROOM + FLEXI TYPE A1

BLOCK 813
46 SQM

- #02-09 TO #05-09
- #02-10 TO #05-10 (MIRROR)
- #02-13 TO #05-13



2 BEDROOM TYPE B1a-G

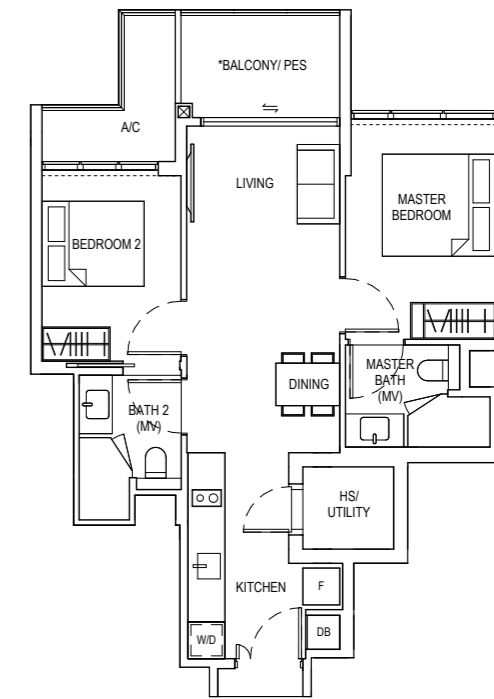
BLOCK 815
71 SQM

- #01-22

TYPE B1a

BLOCK 815
71 SQM

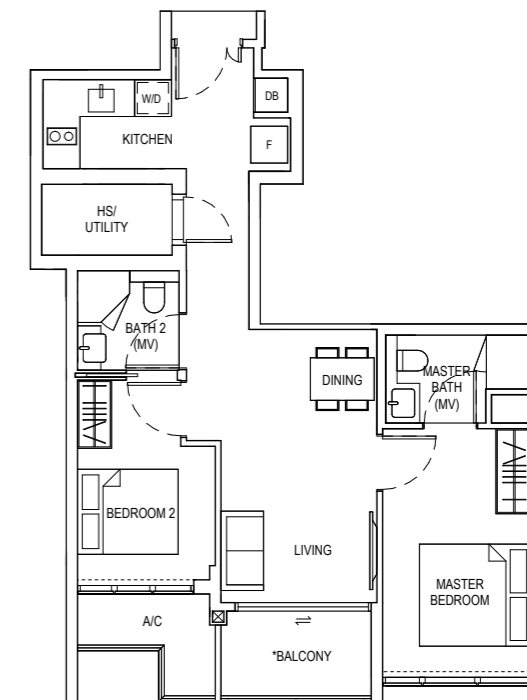
- #02-22 TO #05-22



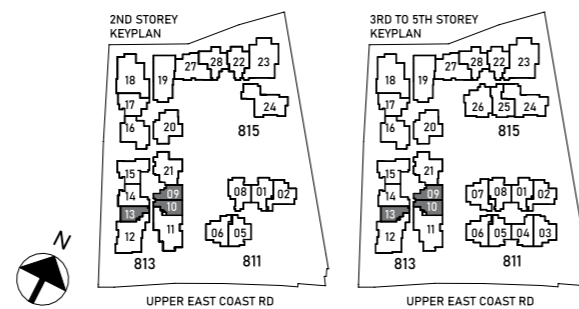
2 BEDROOM TYPE B1b

BLOCK 815
72 SQM

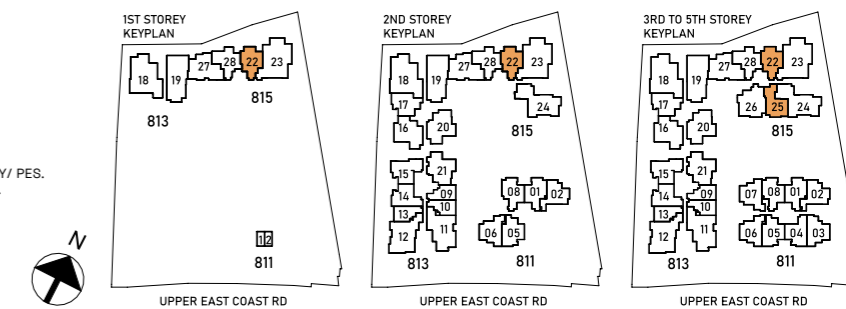
- #03-25 TO #05-25



ALL FLOOR AREAS INDICATED ARE INCLUSIVE OF AC LEDGE AND BALCONY.
ALL FLOOR AREAS ARE ESTIMATE ONLY AND SUBJECT TO FINAL SURVEY.
ALL FLOOR PLANS ARE SUBJECT TO CHANGES AS MAY BE REQUIRED OR APPROVED BY RELEVANT AUTHORITIES.
* THE BALCONY SHALL NOT BE ENCLOSED. ONLY APPROVED BALCONY SCREENS ARE TO BE USED.
FOR AN ILLUSTRATION OF THE APPROVED BALCONY SCREEN, PLEASE REFER TO ANNEX A OF THIS BROCHURE.



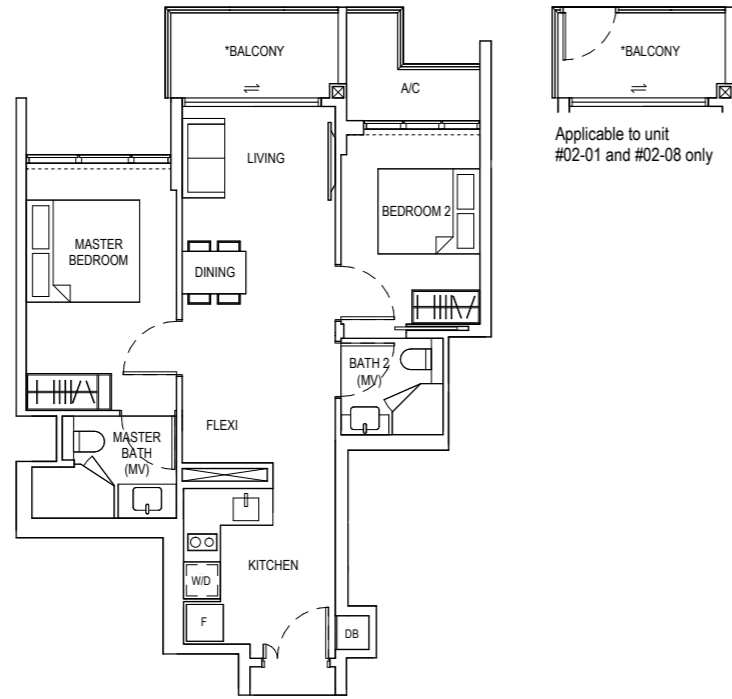
ALL FLOOR AREAS INDICATED ARE INCLUSIVE OF AC LEDGE AND BALCONY / PES.
ALL FLOOR AREAS ARE ESTIMATE ONLY AND SUBJECT TO FINAL SURVEY.
ALL FLOOR PLANS ARE SUBJECT TO CHANGES AS MAY BE REQUIRED OR APPROVED BY RELEVANT AUTHORITIES.
* THE BALCONY / PES SHALL NOT BE ENCLOSED.
ONLY APPROVED BALCONY / PES SCREENS ARE TO BE USED.
FOR AN ILLUSTRATION OF THE APPROVED BALCONY/PES SCREEN, PLEASE REFER TO ANNEX A OF THIS BROCHURE.



2 BEDROOM + FLEXI TYPE B2a

BLOCK 811
69 SQM

#02-01 TO #05-01
#02-08 TO #05-08 (MIRROR)



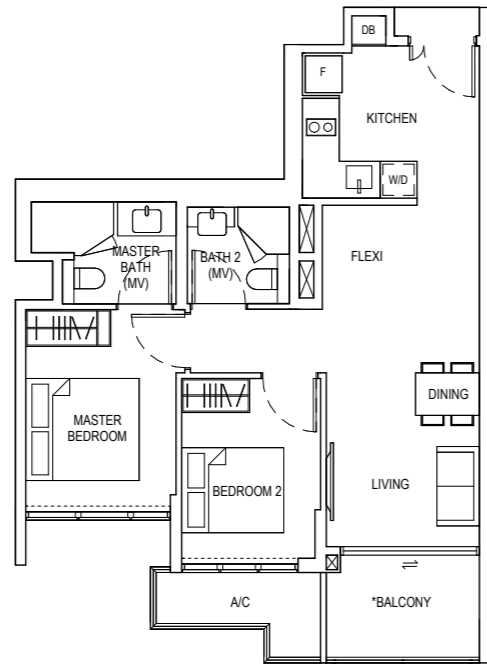
2 BEDROOM + FLEXI TYPE B2b

BLOCK 811
70 SQM

#03-04 TO #05-04

BLOCK 813
70 SQM

#02-14 TO #05-14



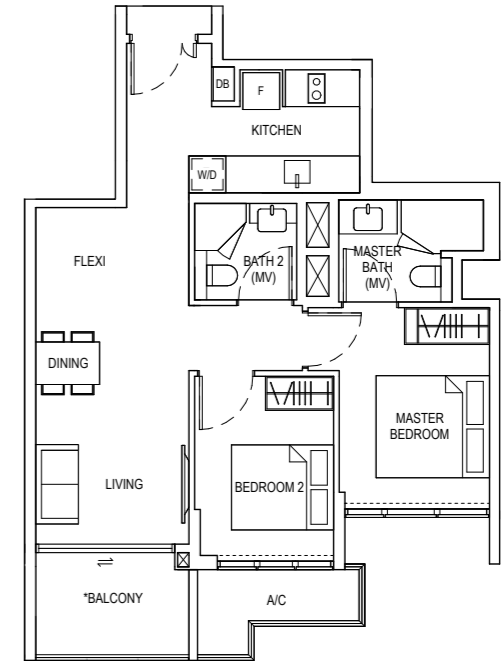
2 BEDROOM + FLEXI TYPE B2c

BLOCK 811
70 SQM

#02-05 TO #05-05

BLOCK 813
70 SQM

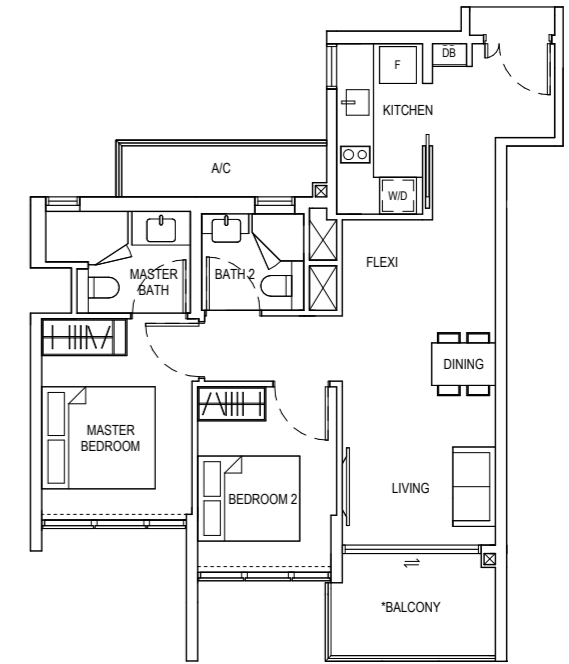
#02-17 TO #05-17



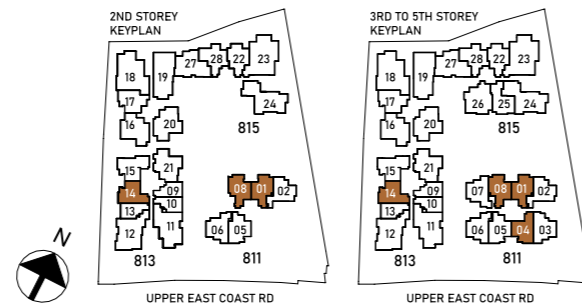
2 BEDROOM + FLEXI TYPE B2d

BLOCK 811
70 SQM

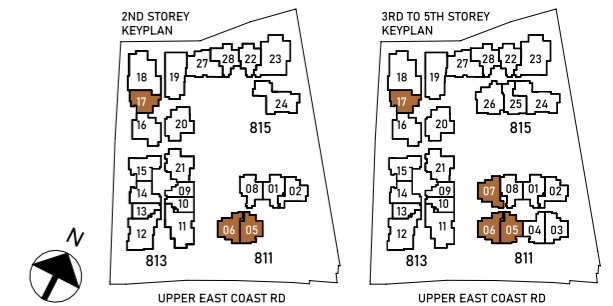
#02-06 TO #05-06
#03-07 TO #05-07 (MIRROR)



ALL FLOOR AREAS INDICATED ARE INCLUSIVE OF AC LEDGE AND BALCONY.
ALL FLOOR AREAS ARE ESTIMATE ONLY AND SUBJECT TO FINAL SURVEY.
ALL FLOOR PLANS ARE SUBJECT TO CHANGES AS MAY BE REQUIRED OR APPROVED BY RELEVANT AUTHORITIES.
* THE BALCONY SHALL NOT BE ENCLOSED. ONLY APPROVED BALCONY SCREENS ARE TO BE USED.
FOR AN ILLUSTRATION OF THE APPROVED BALCONY SCREEN, PLEASE REFER TO ANNEX A OF THIS BROCHURE.



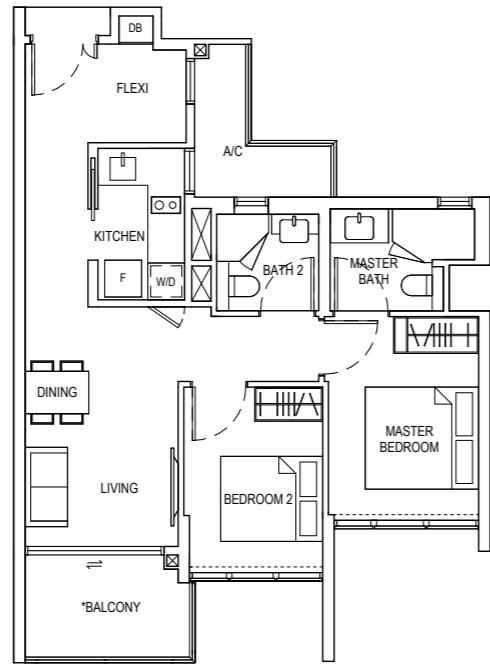
ALL FLOOR AREAS INDICATED ARE INCLUSIVE OF AC LEDGE AND BALCONY.
ALL FLOOR AREAS ARE ESTIMATE ONLY AND SUBJECT TO FINAL SURVEY.
ALL FLOOR PLANS ARE SUBJECT TO CHANGES AS MAY BE REQUIRED OR APPROVED BY RELEVANT AUTHORITIES.
* THE BALCONY SHALL NOT BE ENCLOSED. ONLY APPROVED BALCONY SCREENS ARE TO BE USED.
FOR AN ILLUSTRATION OF THE APPROVED BALCONY SCREEN, PLEASE REFER TO ANNEX A OF THIS BROCHURE.



2 BEDROOM + FLEXI TYPE B2e

BLOCK 811
70 SQM

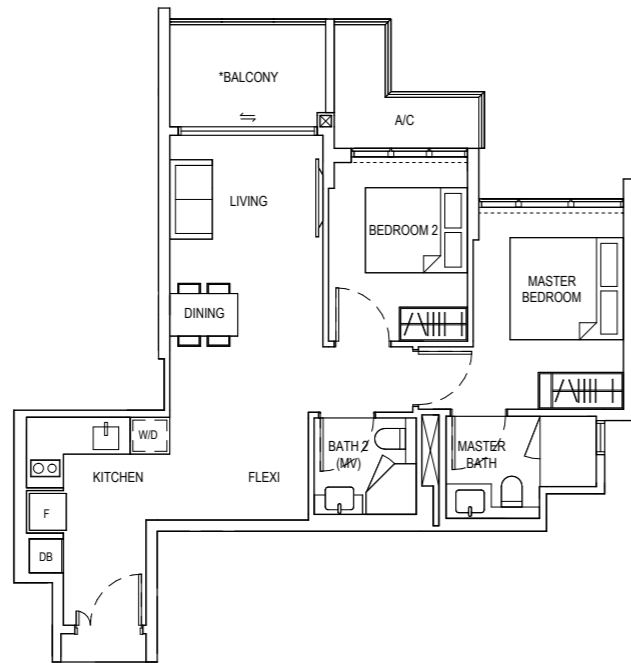
#03-03 TO #05-03



2 BEDROOM + FLEXI TYPE B2f

BLOCK 811
70 SQM

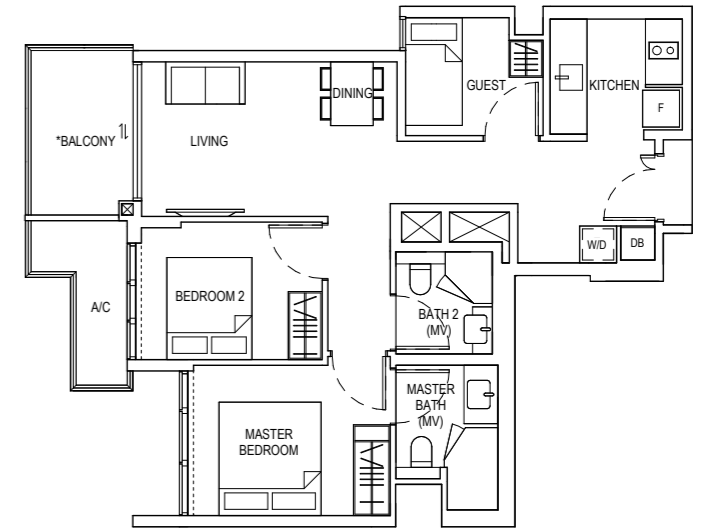
#02-02 TO #05-02



2 BEDROOM + GUEST TYPE C1

BLOCK 813
75 SQM

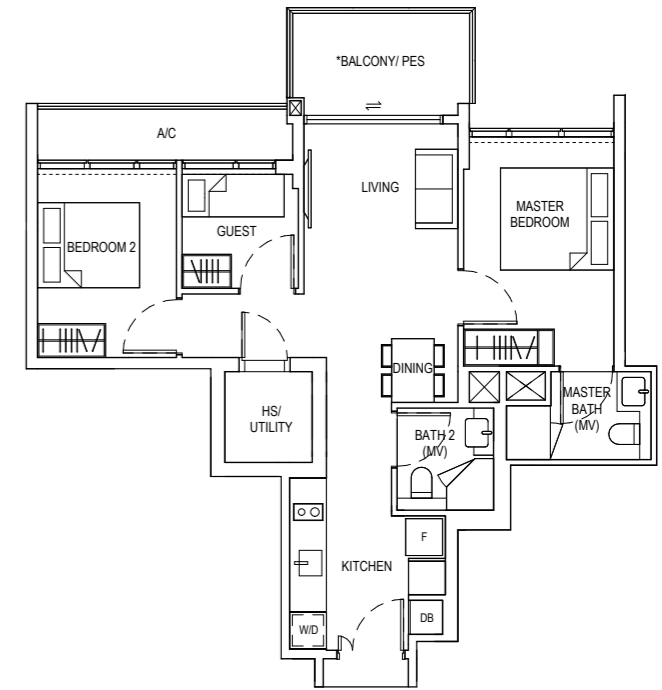
#02-15 TO #05-15



2 BEDROOM + GUEST TYPE C2-G

BLOCK 815
77 SQM

#01-28

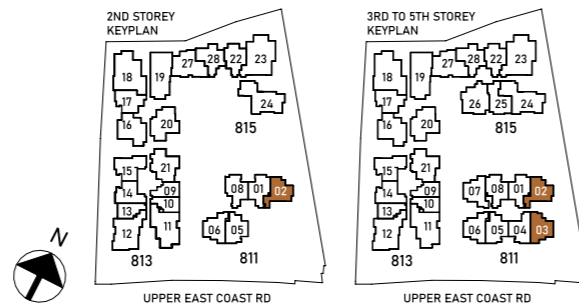


TYPE C2

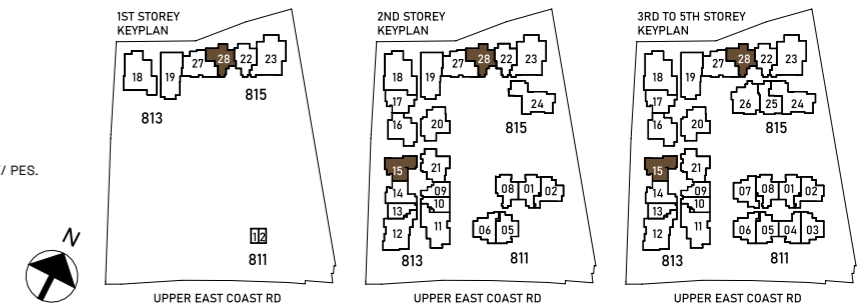
BLOCK 815
77 SQM

#02-28 TO #05-28

ALL FLOOR AREAS INDICATED ARE INCLUSIVE OF AC LEDGE AND BALCONY.
ALL FLOOR AREAS ARE ESTIMATE ONLY AND SUBJECT TO FINAL SURVEY.
ALL FLOOR PLANS ARE SUBJECT TO CHANGES AS MAY BE REQUIRED OR APPROVED BY RELEVANT AUTHORITIES.
* THE BALCONY SHALL NOT BE ENCLOSED. ONLY APPROVED BALCONY SCREENS ARE TO BE USED.
FOR AN ILLUSTRATION OF THE APPROVED BALCONY SCREEN, PLEASE REFER TO ANNEX A OF THIS BROCHURE.



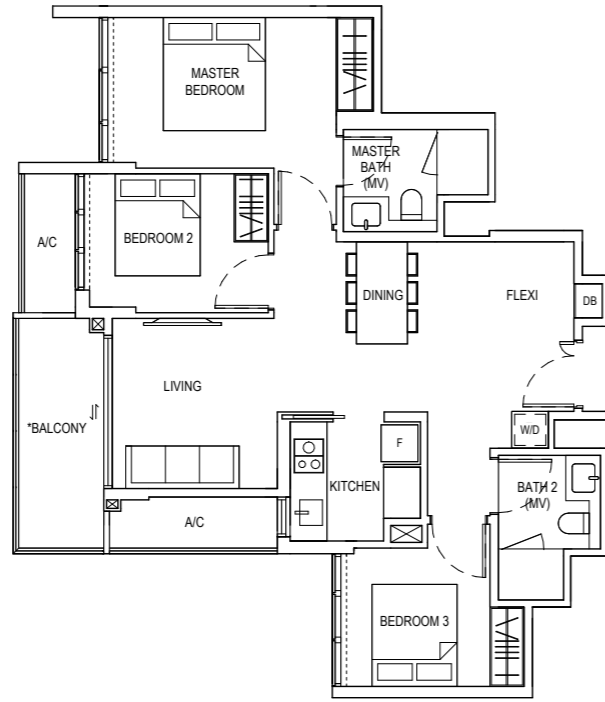
ALL FLOOR AREAS INDICATED ARE INCLUSIVE OF AC LEDGE AND BALCONY / PES.
ALL FLOOR AREAS ARE ESTIMATE ONLY AND SUBJECT TO FINAL SURVEY.
ALL FLOOR PLANS ARE SUBJECT TO CHANGES AS MAY BE REQUIRED OR APPROVED BY RELEVANT AUTHORITIES.
* THE BALCONY / PES SHALL NOT BE ENCLOSED.
ONLY APPROVED BALCONY / PES SCREENS ARE TO BE USED.
FOR AN ILLUSTRATION OF THE APPROVED BALCONY/PES SCREEN, PLEASE REFER TO ANNEX A OF THIS BROCHURE.



3 BEDROOM + FLEXI TYPE D1

BLOCK 813
91 SQM

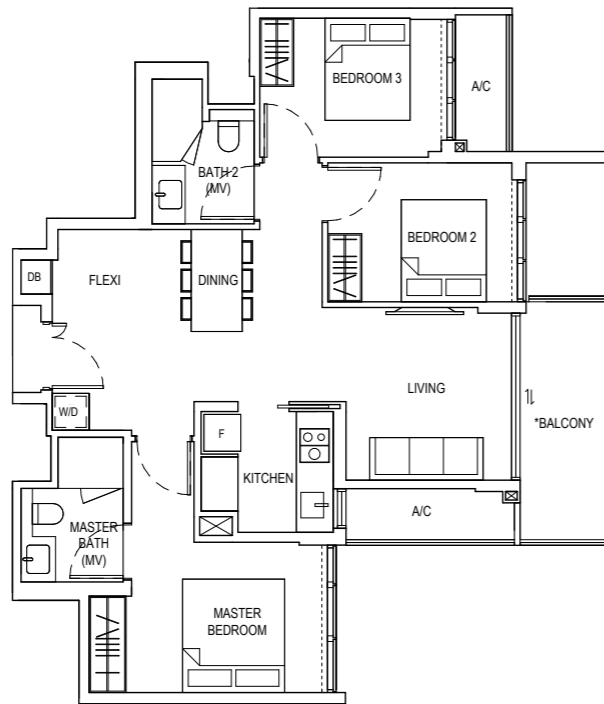
#02-16 TO #05-16



3 BEDROOM + FLEXI TYPE D2

BLOCK 813
91 SQM

#02-20 TO #05-20
#02-21 TO #05-21 (MIRROR)



3 BEDROOM + FLEXI TYPE D3-G

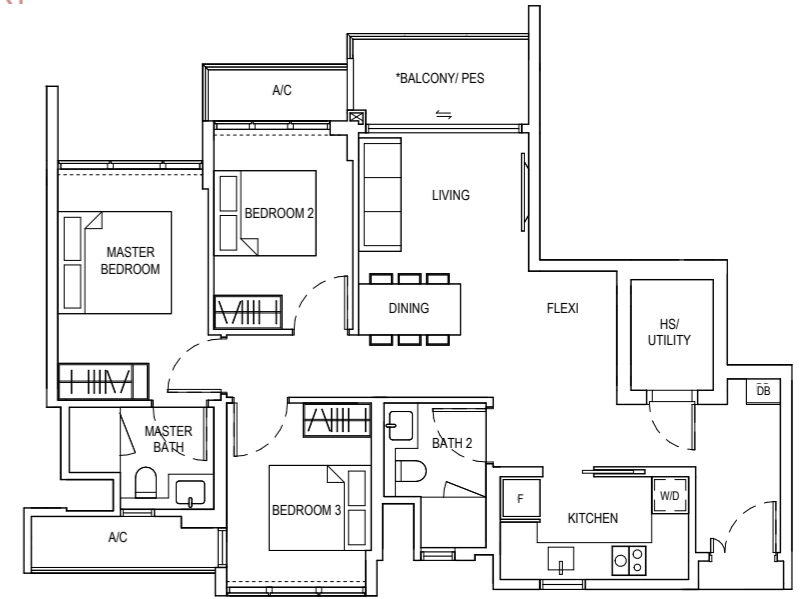
BLOCK 815
96 SQM

#01-27

TYPE D3

BLOCK 815
96 SQM

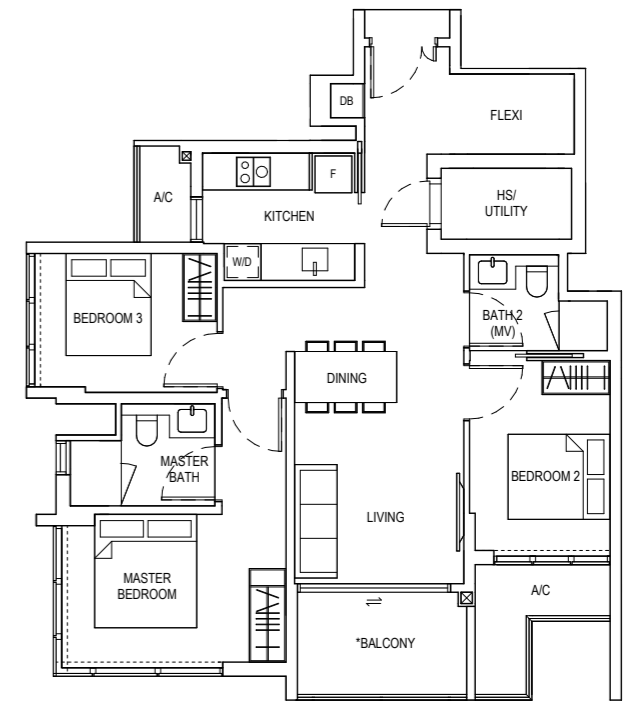
#02-27 TO #05-27



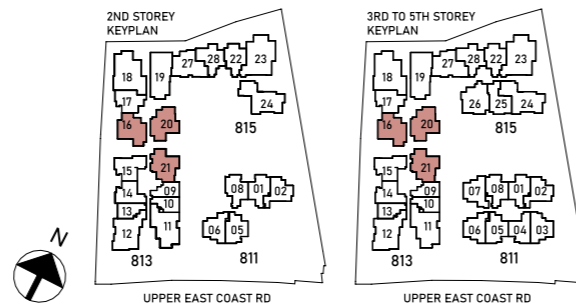
3 BEDROOM + FLEXI TYPE D4

BLOCK 815
96 SQM

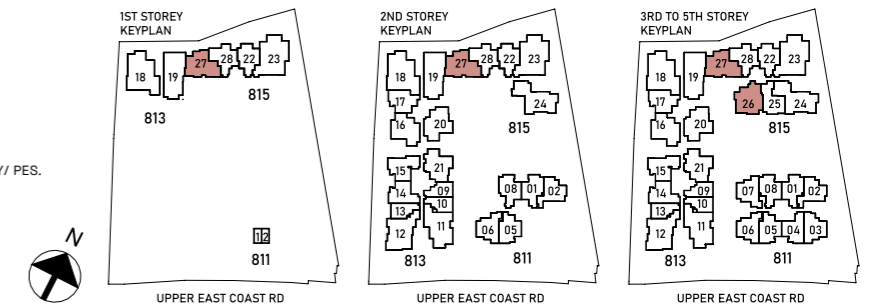
#03-26 TO #05-26



ALL FLOOR AREAS INDICATED ARE INCLUSIVE OF AC LEDGE AND BALCONY.
ALL FLOOR AREAS ARE ESTIMATE ONLY AND SUBJECT TO FINAL SURVEY.
ALL FLOOR PLANS ARE SUBJECT TO CHANGES AS MAY BE REQUIRED OR APPROVED BY RELEVANT AUTHORITIES.
* THE BALCONY SHALL NOT BE ENCLOSED. ONLY APPROVED BALCONY SCREENS ARE TO BE USED.
FOR AN ILLUSTRATION OF THE APPROVED BALCONY SCREEN, PLEASE REFER TO ANNEX A OF THIS BROCHURE.



ALL FLOOR AREAS INDICATED ARE INCLUSIVE OF AC LEDGE AND BALCONY / PES.
ALL FLOOR AREAS ARE ESTIMATE ONLY AND SUBJECT TO FINAL SURVEY.
ALL FLOOR PLANS ARE SUBJECT TO CHANGES AS MAY BE REQUIRED OR APPROVED BY RELEVANT AUTHORITIES.
* THE BALCONY / PES SHALL NOT BE ENCLOSED.
ONLY APPROVED BALCONY / PES SCREENS ARE TO BE USED.
FOR AN ILLUSTRATION OF THE APPROVED BALCONY / PES SCREEN, PLEASE REFER TO ANNEX A OF THIS BROCHURE.



4 BEDROOM TYPE E1a-G

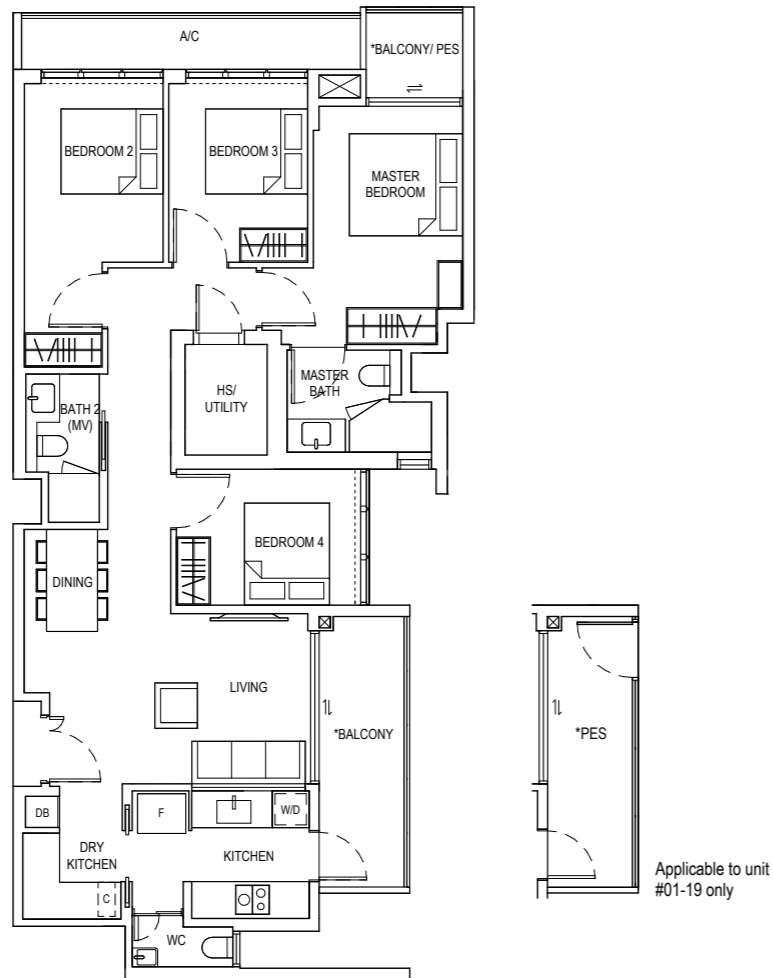
BLOCK 813
116 SQM

#01-19

TYPE E1a

BLOCK 813
116 SQM

#02-19 TO #05-19



4 BEDROOM TYPE E1b

BLOCK 815
116 SQM

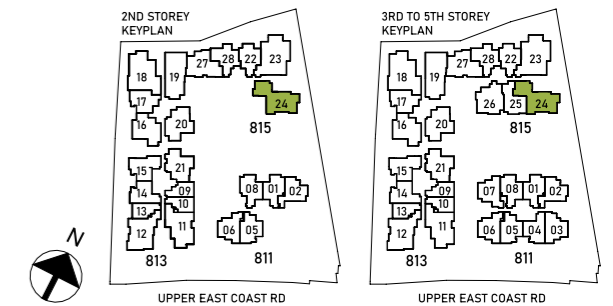
#02-24 TO #05-24



ALL FLOOR AREAS INDICATED ARE INCLUSIVE OF AC LEDGE AND BALCONY / PES.
ALL FLOOR AREAS ARE ESTIMATE ONLY AND SUBJECT TO FINAL SURVEY.
ALL FLOOR PLANS ARE SUBJECT TO CHANGES AS MAY BE REQUIRED OR APPROVED BY RELEVANT AUTHORITIES.
* THE BALCONY / PES SHALL NOT BE ENCLOSED.
ONLY APPROVED BALCONY / PES SCREENS ARE TO BE USED.
FOR AN ILLUSTRATION OF THE APPROVED BALCONY/PES SCREEN, PLEASE REFER TO ANNEX A OF THIS BROCHURE.



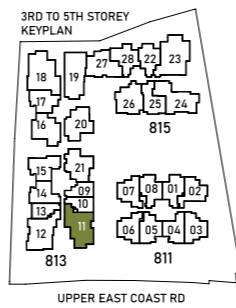
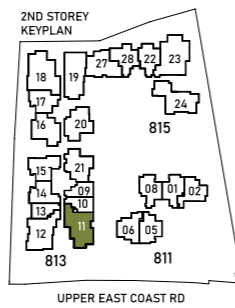
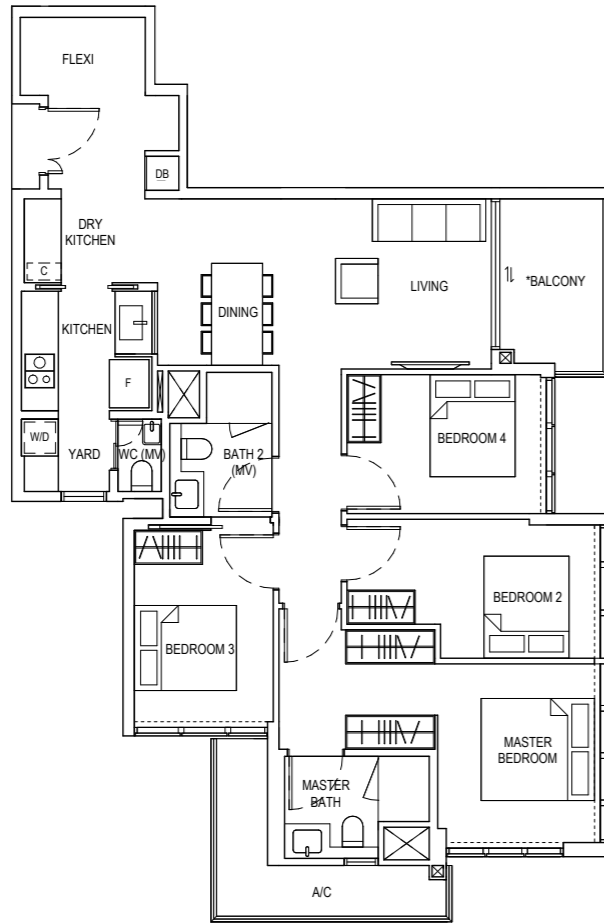
ALL FLOOR AREAS INDICATED ARE INCLUSIVE OF AC LEDGE AND BALCONY.
ALL FLOOR AREAS ARE ESTIMATE ONLY AND SUBJECT TO FINAL SURVEY.
ALL FLOOR PLANS ARE SUBJECT TO CHANGES AS MAY BE REQUIRED OR APPROVED BY RELEVANT AUTHORITIES.
* THE BALCONY SHALL NOT BE ENCLOSED. ONLY APPROVED BALCONY SCREENS ARE TO BE USED.
FOR AN ILLUSTRATION OF THE APPROVED BALCONY SCREEN, PLEASE REFER TO ANNEX A OF THIS BROCHURE.



4 BEDROOM + FLEXI TYPE E2a

BLOCK 813
116 SQM

#02-11 TO #05-11



ALL FLOOR AREAS INDICATED ARE INCLUSIVE OF AC LEDGE AND BALCONY.
ALL FLOOR AREAS ARE ESTIMATE ONLY AND SUBJECT TO FINAL SURVEY.
ALL FLOOR PLANS ARE SUBJECT TO CHANGES AS MAY BE REQUIRED OR APPROVED BY RELEVANT AUTHORITIES.
* THE BALCONY SHALL NOT BE ENCLOSED, ONLY APPROVED BALCONY SCREENS ARE TO BE USED.
FOR AN ILLUSTRATION OF THE APPROVED BALCONY SCREEN, PLEASE REFER TO ANNEX A OF THIS BROCHURE.



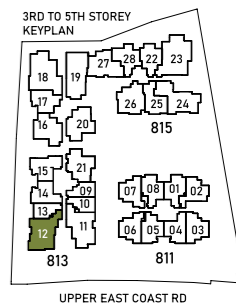
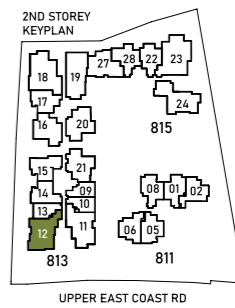
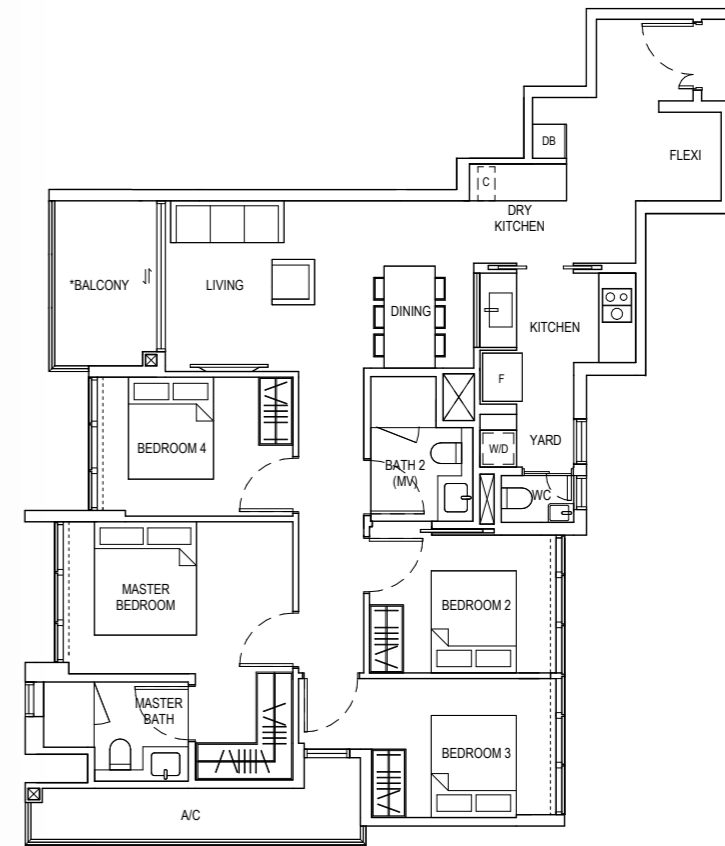
UPPER EAST COAST RD

UPPER EAST COAST RD

4 BEDROOM + FLEXI TYPE E2b

BLOCK 813
116 SQM

#02-12 TO #05-12



ALL FLOOR AREAS INDICATED ARE INCLUSIVE OF AC LEDGE AND BALCONY.
ALL FLOOR AREAS ARE ESTIMATE ONLY AND SUBJECT TO FINAL SURVEY.
ALL FLOOR PLANS ARE SUBJECT TO CHANGES AS MAY BE REQUIRED OR APPROVED BY RELEVANT AUTHORITIES.
* THE BALCONY SHALL NOT BE ENCLOSED, ONLY APPROVED BALCONY SCREENS ARE TO BE USED.
FOR AN ILLUSTRATION OF THE APPROVED BALCONY SCREEN, PLEASE REFER TO ANNEX A OF THIS BROCHURE.



UPPER EAST COAST RD

UPPER EAST COAST RD

5 BEDROOM TYPE F1-G

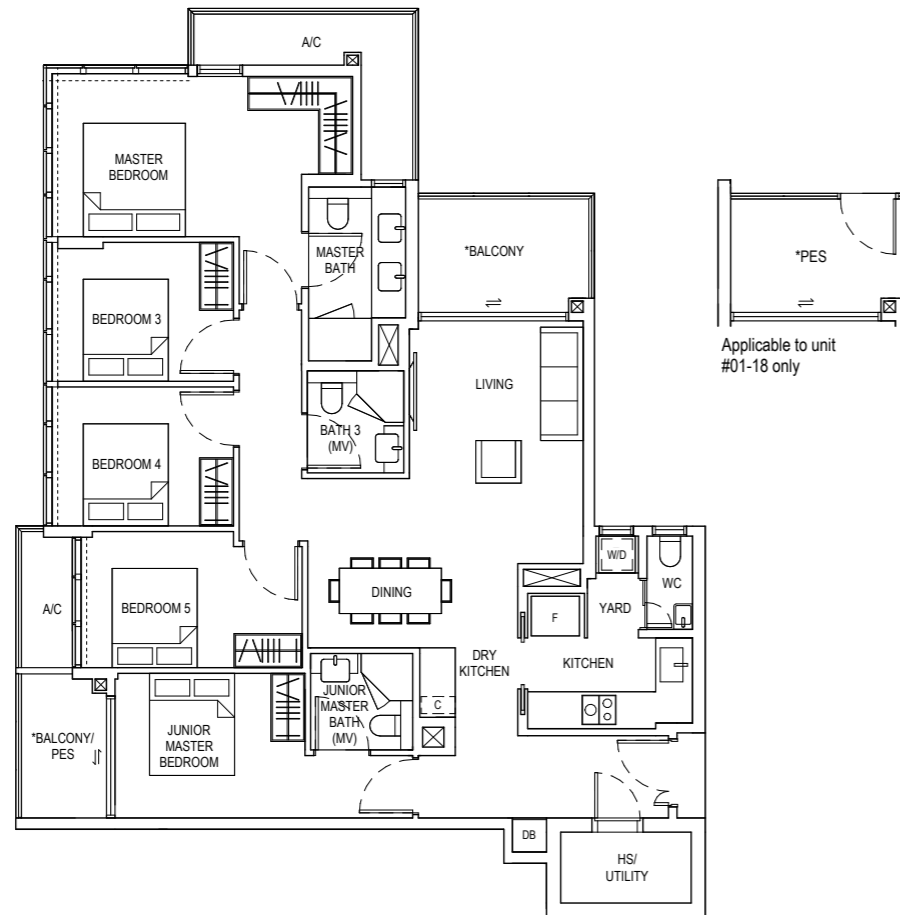
BLOCK 813
142 SQM

#01-18

TYPE F1

BLOCK 813
142 SQM

#02-18 TO #05-18



5 BEDROOM TYPE F2-G

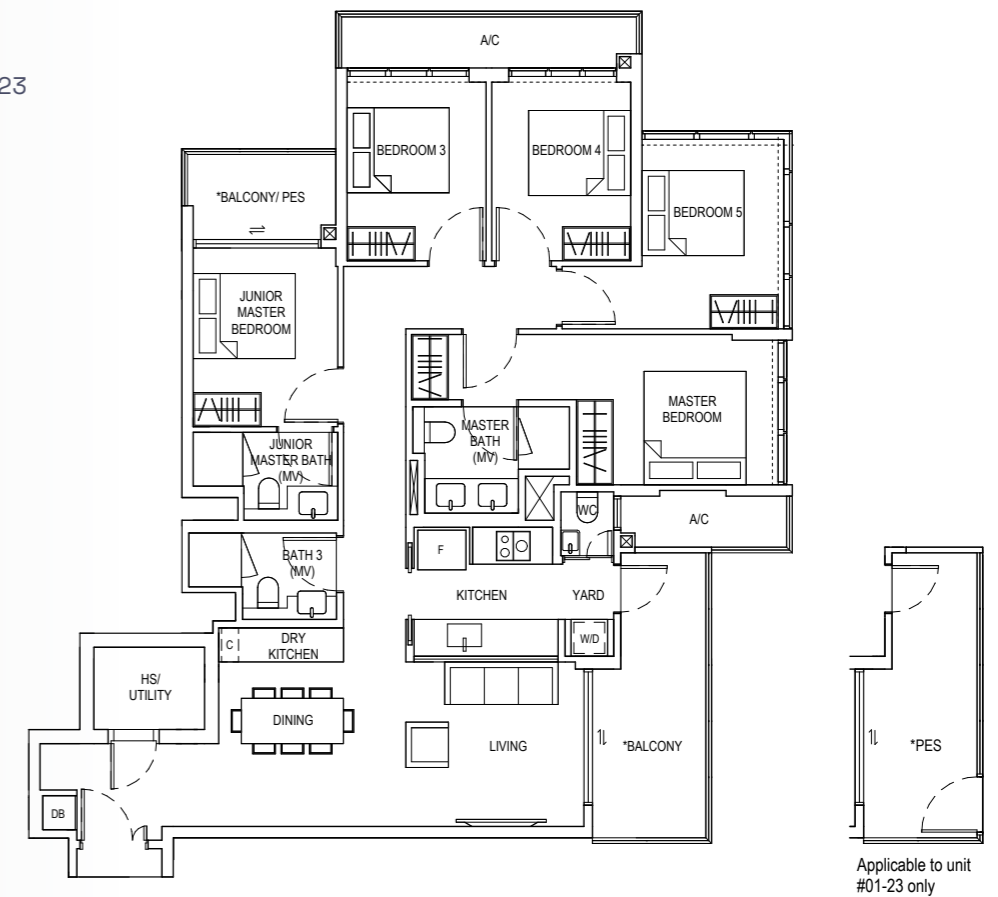
BLOCK 815
142 SQM

#01-23

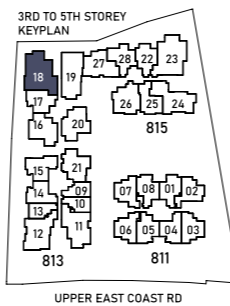
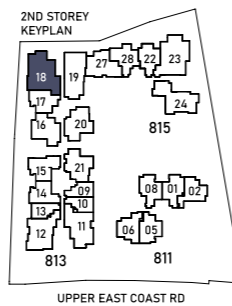
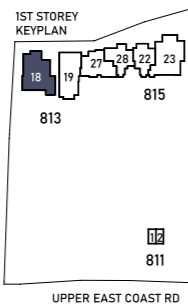
TYPE F2

BLOCK 815
142 SQM

#02-23 TO #05-23



ALL FLOOR AREAS INDICATED ARE INCLUSIVE OF AC LEDGE AND BALCONY/ PES.
ALL FLOOR AREAS ARE ESTIMATE ONLY AND SUBJECT TO FINAL SURVEY.
ALL FLOOR PLANS ARE SUBJECT TO CHANGES AS MAY BE REQUIRED OR APPROVED BY RELEVANT AUTHORITIES.
* THE BALCONY/ PES SHALL NOT BE ENCLOSED.
ONLY APPROVED BALCONY / PES SCREENS ARE TO BE USED.
FOR AN ILLUSTRATION OF THE APPROVED BALCONY/PES SCREEN, PLEASE REFER TO ANNEX A OF THIS BROCHURE.



ALL FLOOR AREAS INDICATED ARE INCLUSIVE OF AC LEDGE AND BALCONY/ PES.
ALL FLOOR AREAS ARE ESTIMATE ONLY AND SUBJECT TO FINAL SURVEY.
ALL FLOOR PLANS ARE SUBJECT TO CHANGES AS MAY BE REQUIRED OR APPROVED BY RELEVANT AUTHORITIES.
* THE BALCONY/ PES SHALL NOT BE ENCLOSED.
ONLY APPROVED BALCONY / PES SCREENS ARE TO BE USED.
FOR AN ILLUSTRATION OF THE APPROVED BALCONY/PES SCREEN, PLEASE REFER TO ANNEX A OF THIS BROCHURE.

