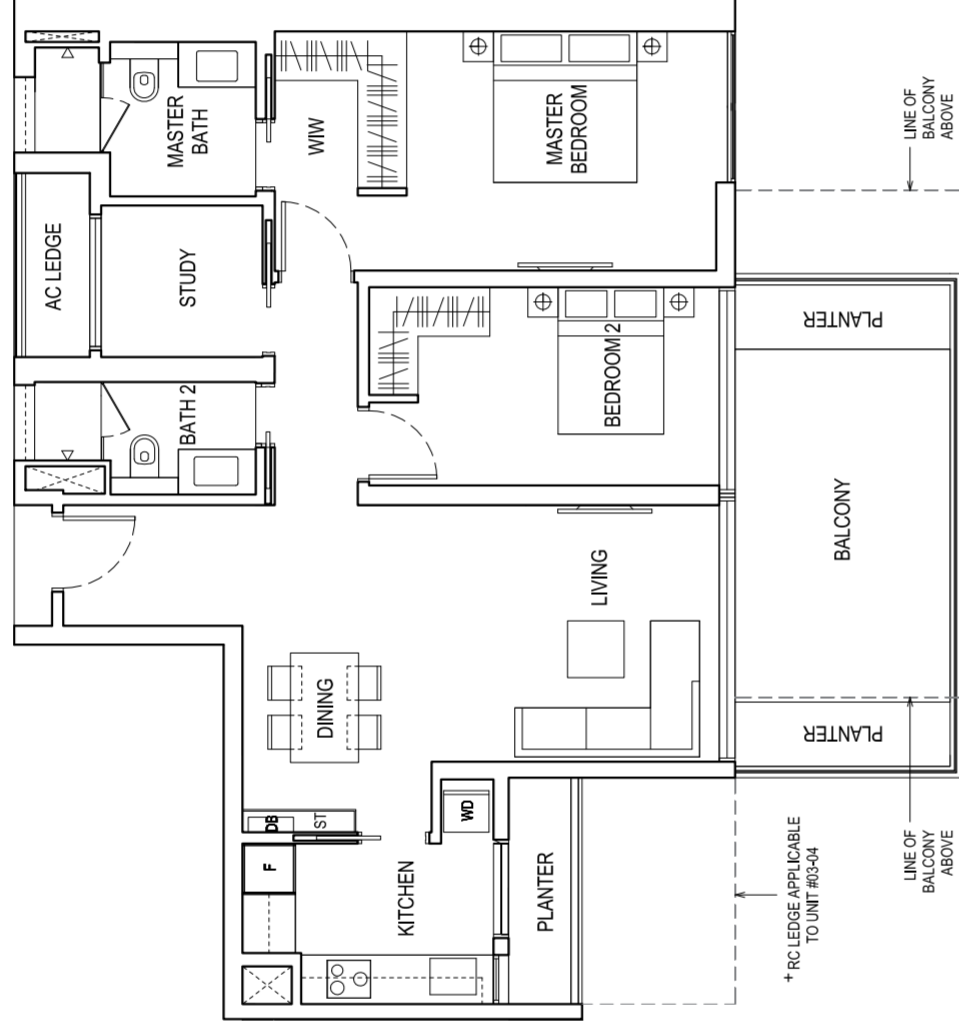


2 BEDROOM + STUDY

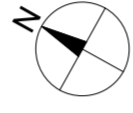
TYPE A1

122 SQM / 1313 SQ FT

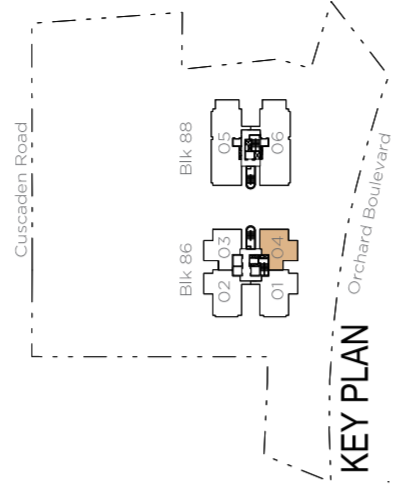
*#03-04, #05-04, #07-04,
#09-04, #11-04, #13-04,
#15-04, #17-04, #19-04,
#21-04, #23-04, #25-04,
#27-04



Area includes air-con (A/C) ledge, balcony, bay window and planter where applicable. Some units are mirror images of the apartment plans shown in the brochure. Please refer to the key plan for orientation. The plans are subject to change as may be approved by relevant authorities. All floor plans are approximate measurements only and are subject to government re-survey. The balcony shall not be enclosed unless with the approved balcony screen. For an illustration of the approved balcony screen, please refer to the diagram annexed hereto as "Annexure".



KEY PLAN

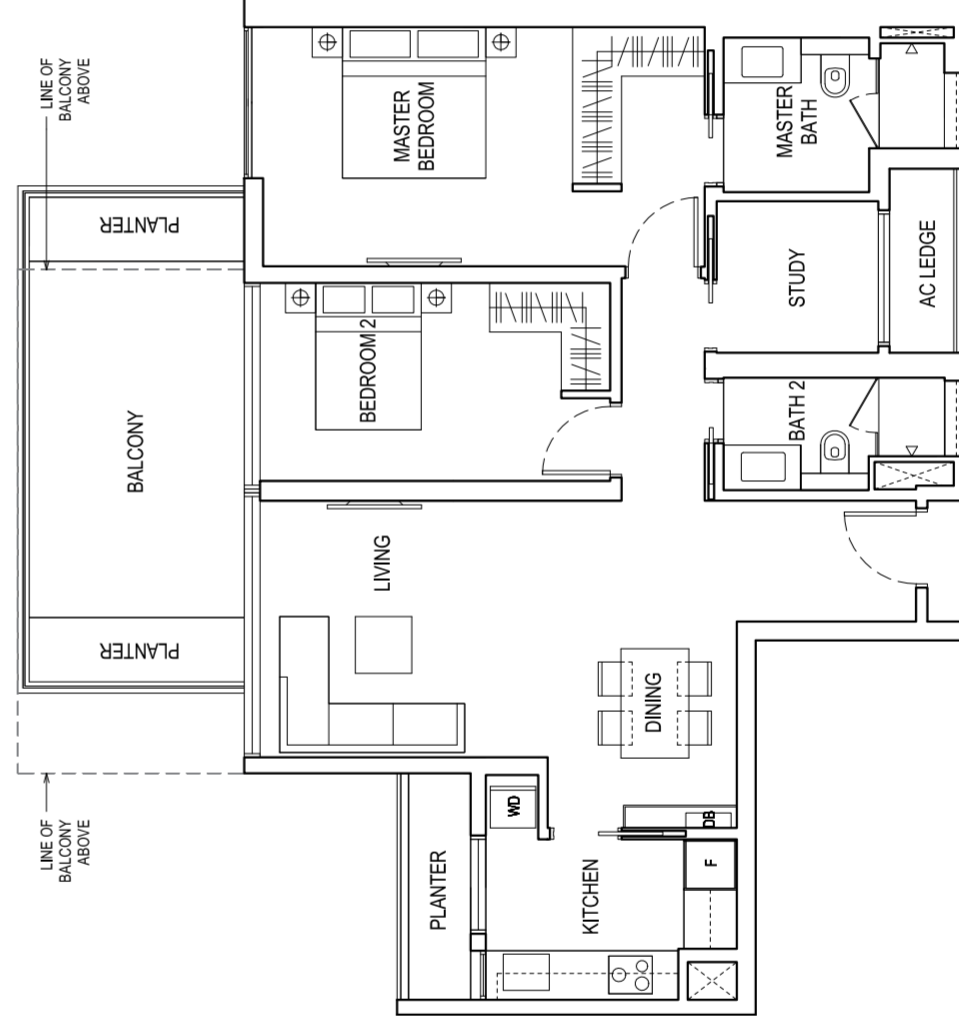


2 BEDROOM + STUDY

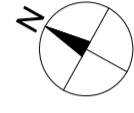
TYPE A2*

122 SQM / 1313 SQ FT

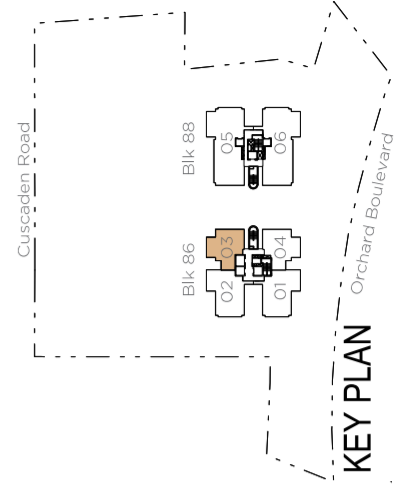
#04-03, #06-03, #08-03,
#10-03, #12-03, #14-03,
#16-03, #18-03, #20-03,
#22-03, #24-03, #26-03



Area includes air-con (A/C) ledge, balcony, bay window and planter where applicable. Some units are mirror images of the apartment plans shown in the brochure. Please refer to the key plan for orientation. The plans are subject to change as may be approved by relevant authorities. All floor plans are approximate measurements only and are subject to government re-survey. The balcony shall not be enclosed unless with the approved balcony screen. For an illustration of the approved balcony screen, please refer to the diagram annexed hereto as "Annexure". * Denotes mirror image units.



KEY PLAN

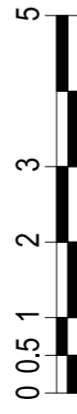
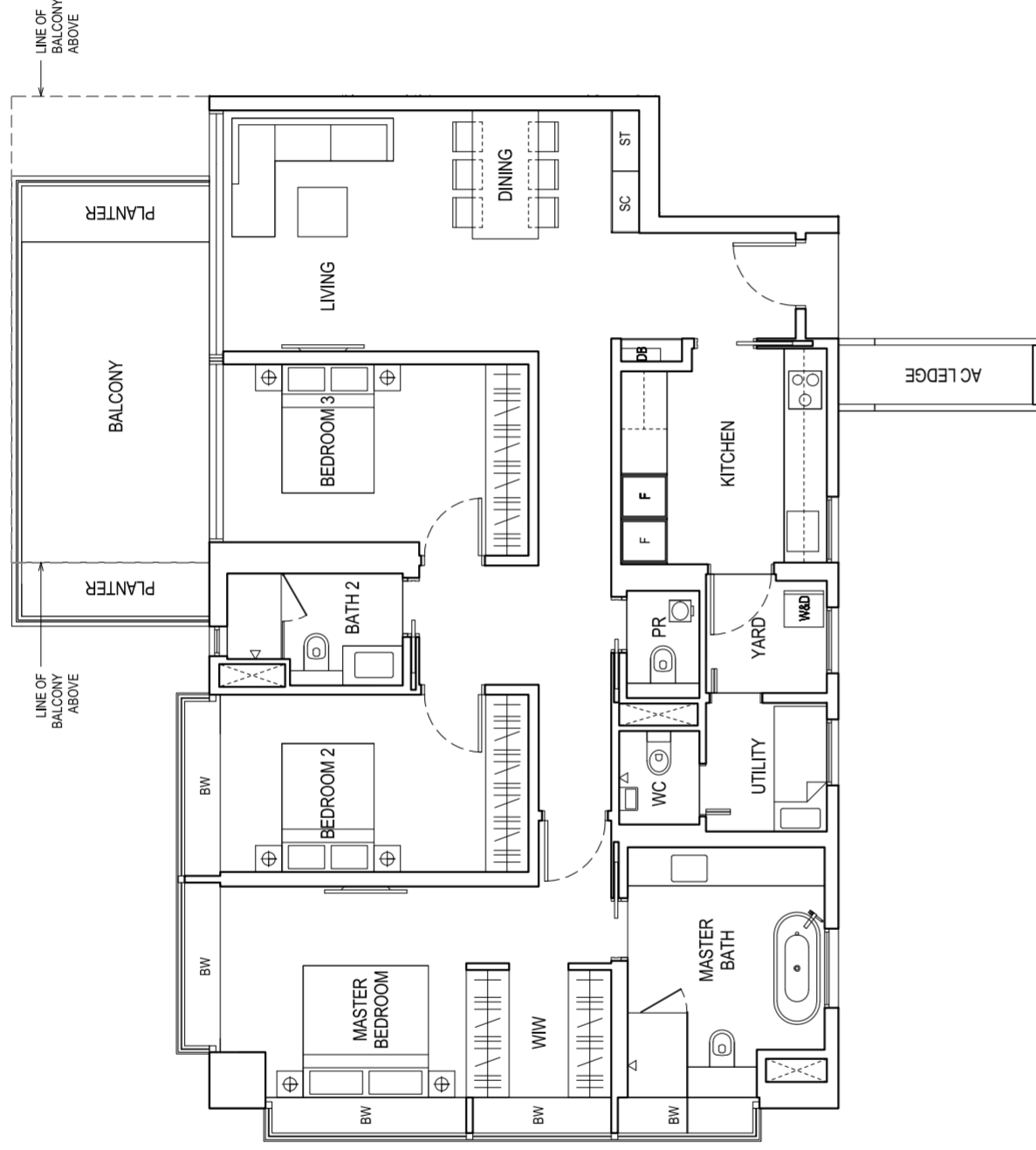


3 BEDROOM

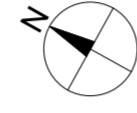
TYPE B1*

165 SQM / 1776 SQ FT

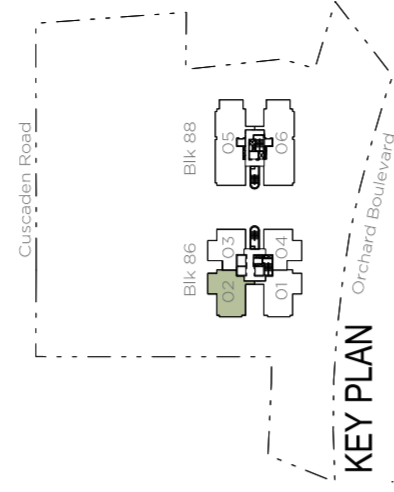
#03-02, #05-02, #07-02,
#09-02, #11-02, #13-02,
#15-02, #17-02, #19-02,
#21-02, #23-02, #25-02,
#27-02



Area includes air-con (A/C) ledge, balcony, bay window and planter, where applicable. Some units are mirror images of the apartment plans shown in the brochure. Please refer to the key plan for orientation. The plans are subject to change as may be approved by relevant authorities. All floor plans are approximate measurements only and are subject to government re-survey. The balcony shall not be enclosed unless with the approved balcony screen. For an illustration of the approved balcony screen, please refer to the diagram annexed hereto as "Annexure". Denotes mirror image units.



KEY PLAN



3 BEDROOM

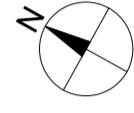
TYPE B2

165 SQM / 1776 SQ FT

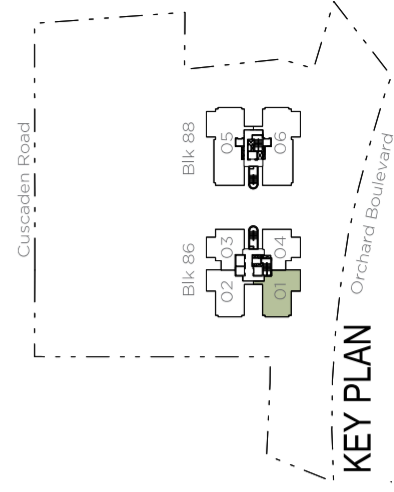
#04-01, #06-01, #08-01,
#10-01, #12-01, #14-01



Area includes air-con (A/C) ledge, balcony, bay window and planter, where applicable. Some units are mirror images of the apartment plans shown in the brochure. Please refer to the key plan for orientation. The plans are subject to change as may be approved by relevant authorities. All floor plans are approximate measurements only and are subject to government re-survey. The balcony shall not be enclosed unless with the approved balcony screen. For an illustration of the approved balcony screen, please refer to the diagram annexed hereto as "Annexure".



KEY PLAN

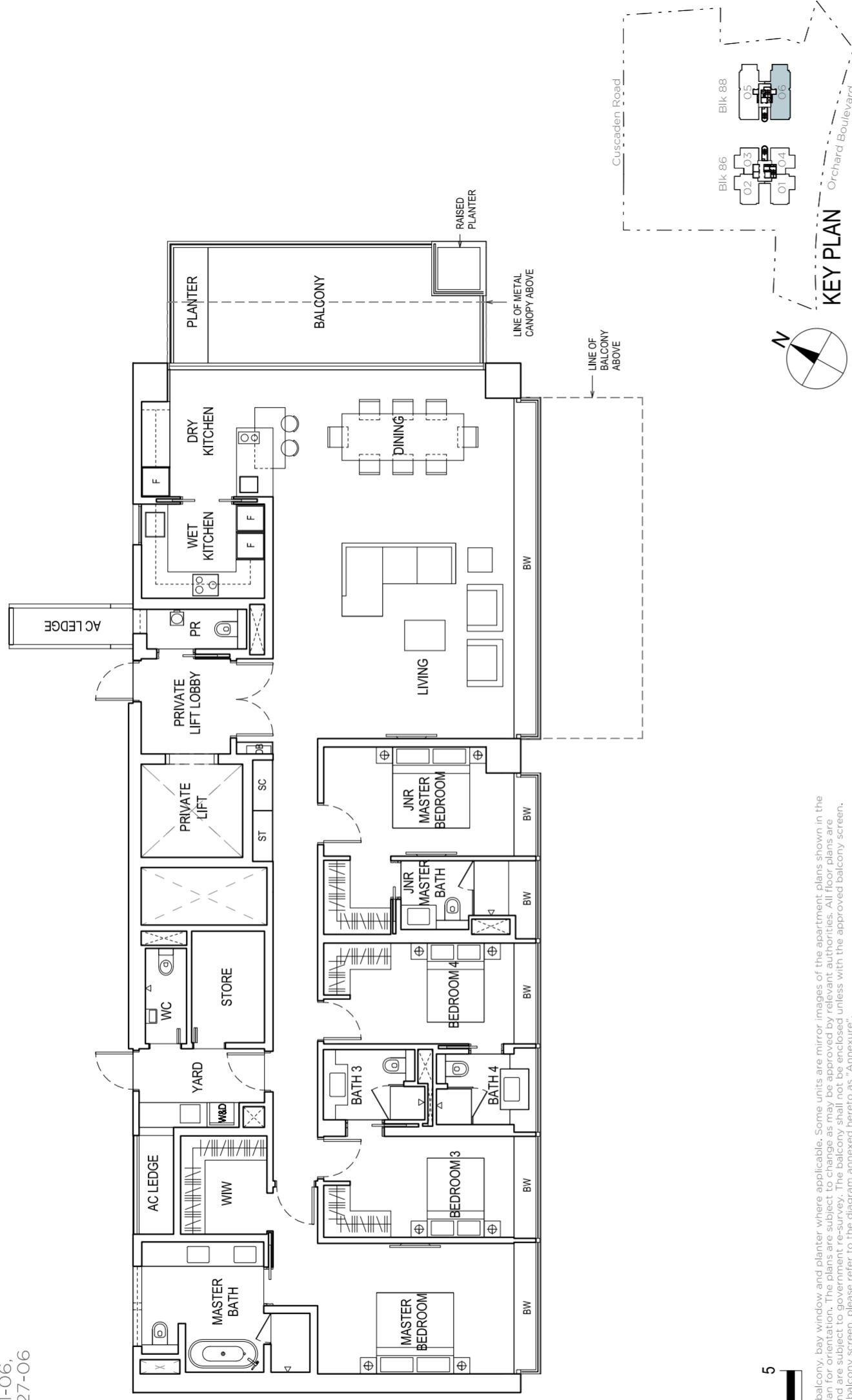


4 BEDROOM

TYPE C1

257 SQM / 2766 SQ FT

- #05-06, #07-06, #09-06,
- #11-06, #13-06, #15-06,
- #17-06, #19-06, #21-06,
- #23-06, #25-06, #27-06



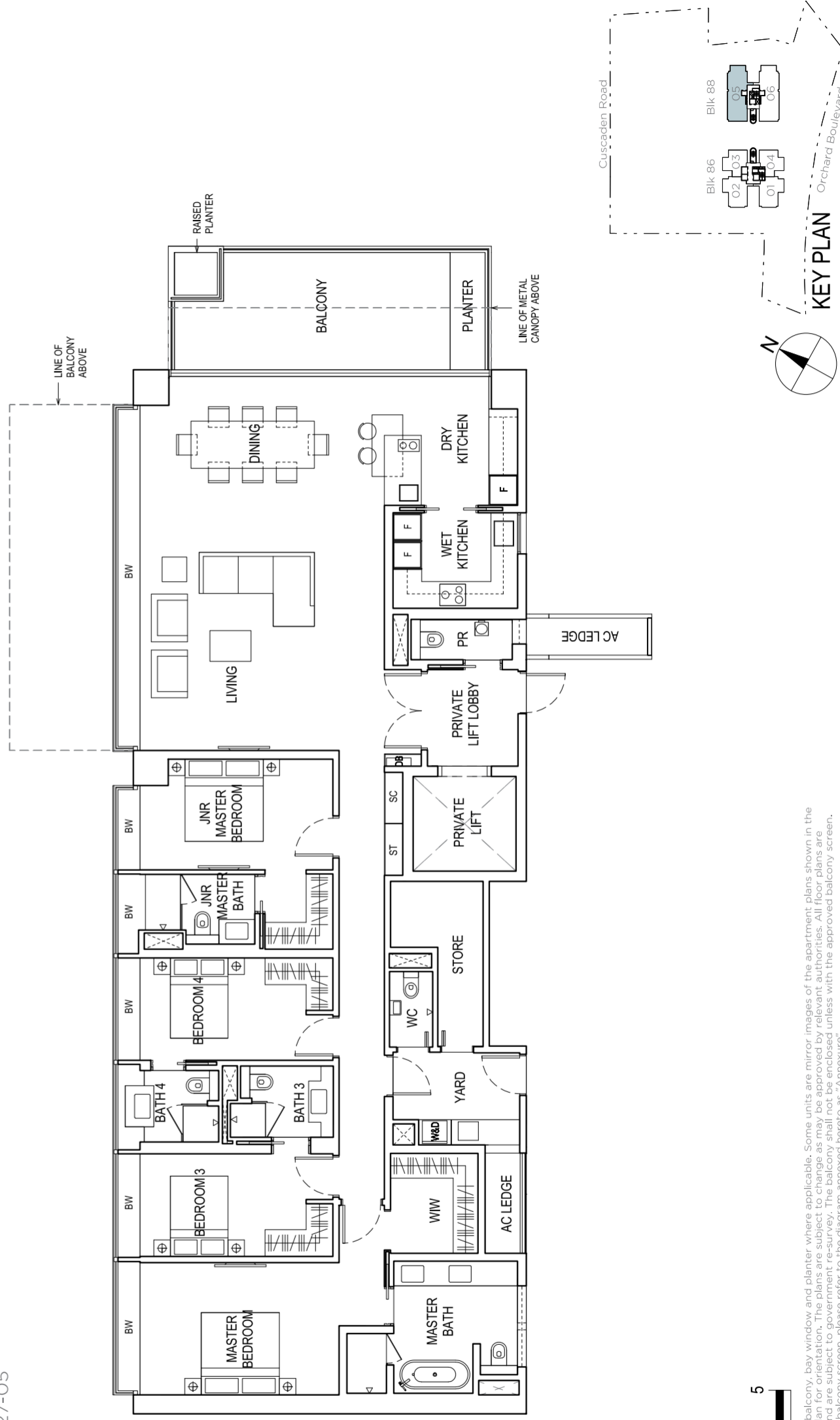
Area includes air-con (A/C) ledge, balcony, bay window and planter, where applicable. Some units are mirror images of the apartment plans shown in the brochure. Please refer to the key plan for orientation. The plans are subject to change as may be approved by relevant authorities. All floor plans are approximate measurements only and are subject to government re-survey. The balcony shall not be enclosed unless with the approved balcony screen. For an illustration of the approved balcony screen, please refer to the diagram annexed hereto as "Annexure".

4 BEDROOM

TYPE C1a

258 SQM / 2777 SQ FT

- #05-05, #07-05, #09-05,
- #11-05, #13-05, #15-05,
- #17-05, #19-05, #21-05,
- #23-05, #25-05, #27-05



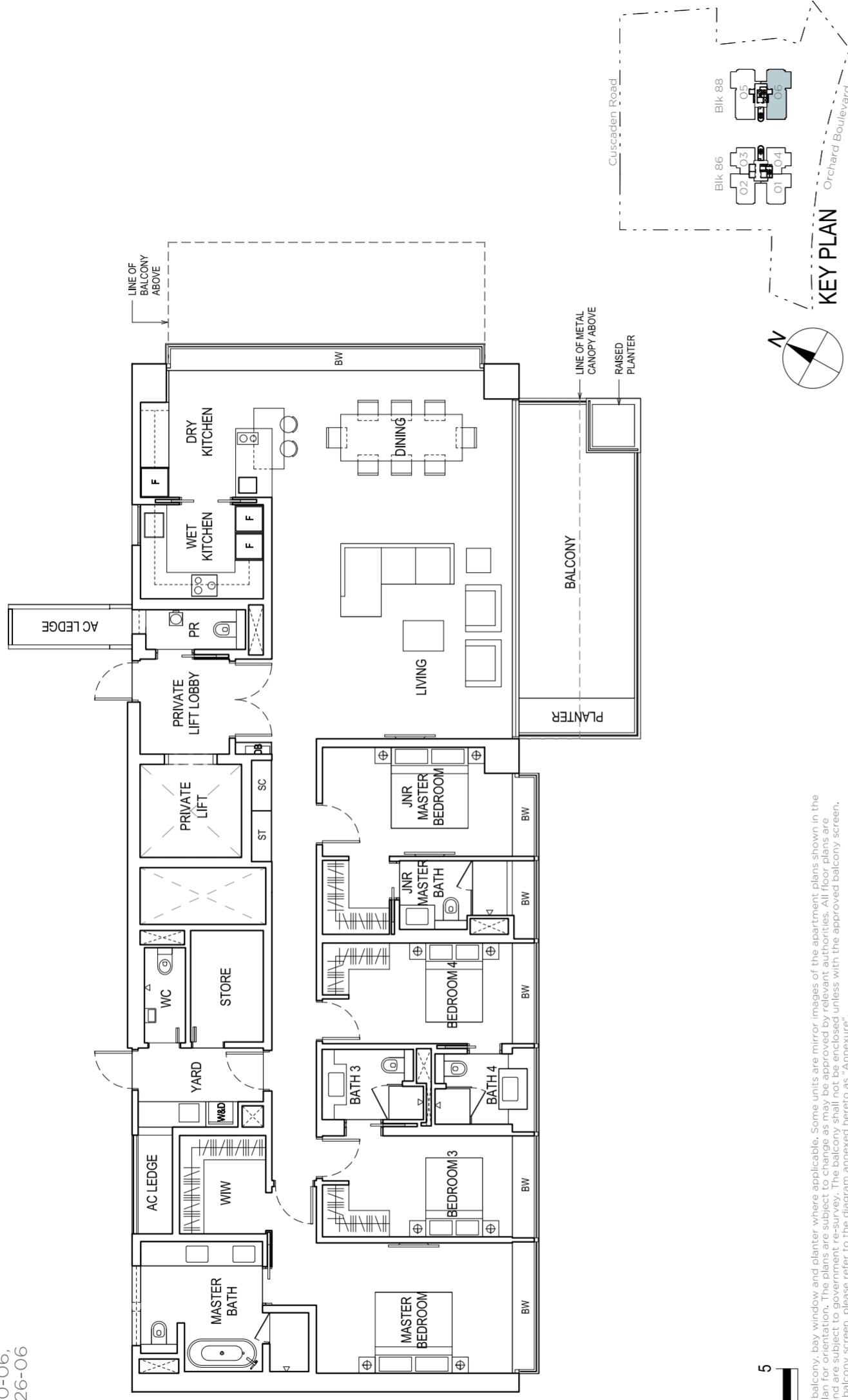
Area includes air-con (A/C) ledge, balcony, bay window and planter, where applicable. Some units are mirror images of the apartment plans shown in the brochure. Please refer to the key plan for orientation. The plans are subject to change as may be approved by relevant authorities. All floor plans are approximate measurements only and are subject to government re-survey. The balcony shall not be enclosed unless with the approved balcony screen. For an illustration of the approved balcony screen, please refer to the diagram annexed hereto as "Annexure".

4 BEDROOM

TYPE C2

258 SQM / 2777 SQ FT

- #04-06, #06-06, #08-06,
- #10-06, #12-06, #14-06,
- #16-06, #18-06, #20-06,
- #22-06, #24-06, #26-06



4 BEDROOM

TYPE C2a

260 SQM / 2799 SQ FT

- #04-05, #06-05, #08-05,
- #10-05, #12-05, #14-05,
- #16-05, #18-05, #20-05,
- #22-05, #24-05, #26-05

