

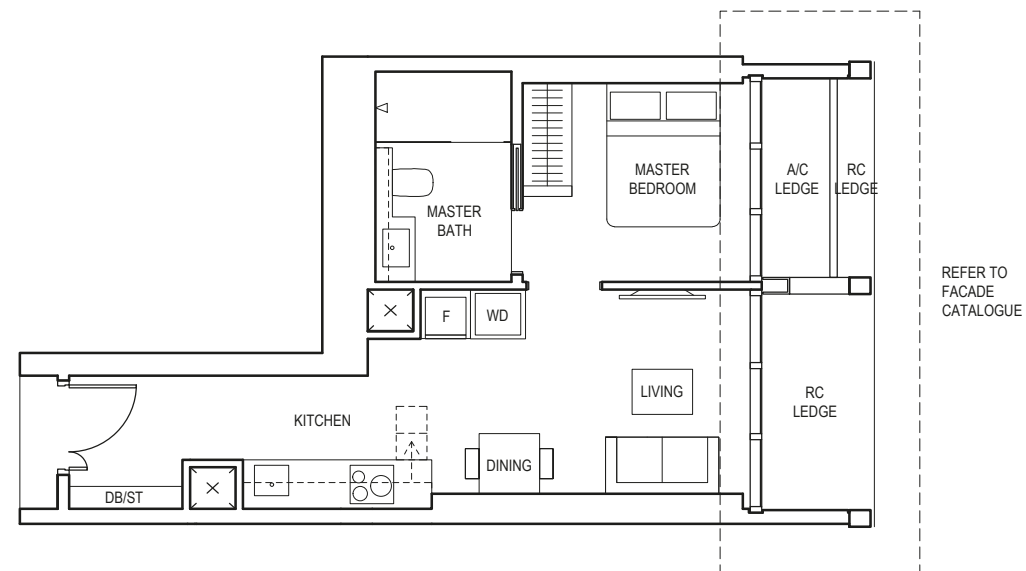


# 1-BEDROOM

## TYPE A3

43 sq m / 463 sq ft

BLK 1  
#04-09 to #23-09  
#25-09 to #44-09

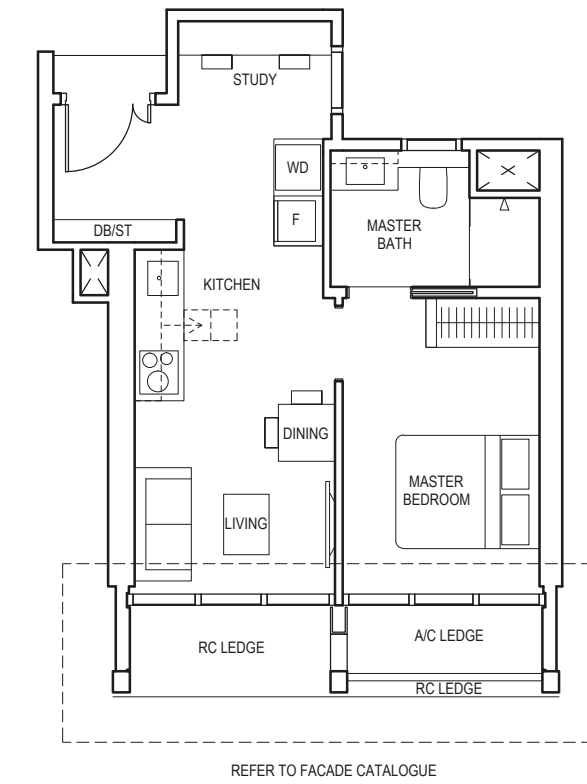


# 1-BEDROOM + STUDY

## TYPE AS1

44 sq m / 474 sq ft

BLK 5  
#04-15 to #23-15



**LEGEND (WHERE APPLICABLE)**  
**DB** Distribution Board    **WD** Washer cum Dryer    **WD** Washer and Dryer    **F** Fridge    **DW** Dishwasher    **WIW** Walk-In Wardrobe  
**WC** Water Closet    **ST** Storage    **HS** Household Shelter    **TB** Tallboy    **CH** Wine Chiller

Area includes air-con (a/c) ledge, balcony and void where applicable. Please refer to the keyplan for orientation. The plans are subjected to change as may be approved by relevant authorities. All floor plans are approximate measurements only and are subjected to government re-survey. The balcony shall not be enclosed unless with the approved balcony screen. For an illustration of the approved balcony screen, please refer to the diagram annexed hereto as "Annexure A".



**LEGEND (WHERE APPLICABLE)**  
**DB** Distribution Board    **WD** Washer cum Dryer    **WD** Washer and Dryer    **F** Fridge    **DW** Dishwasher    **WIW** Walk-In Wardrobe  
**WC** Water Closet    **ST** Storage    **HS** Household Shelter    **TB** Tallboy    **CH** Wine Chiller

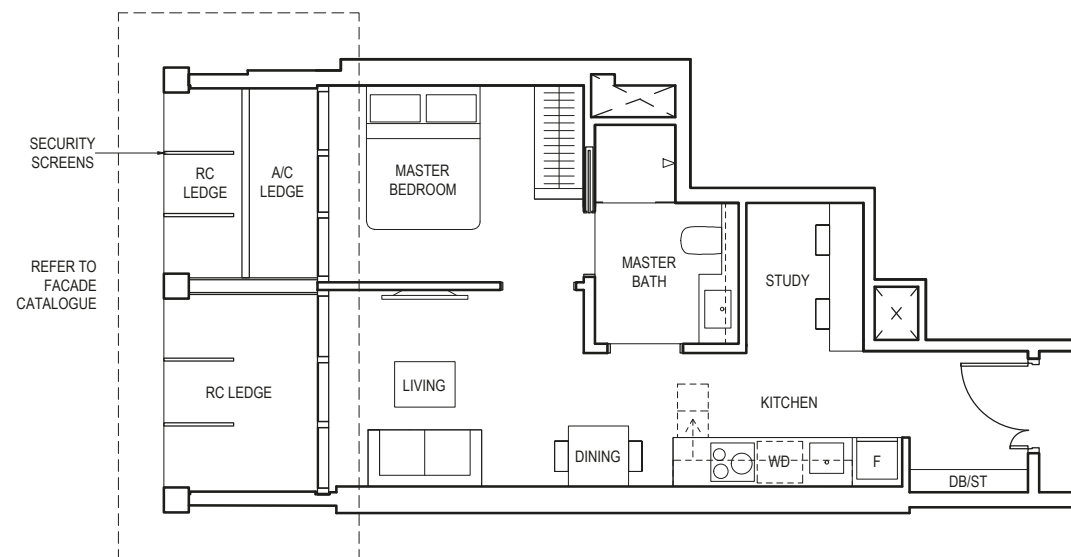
Area includes air-con (a/c) ledge, balcony and void where applicable. Please refer to the keyplan for orientation. The plans are subjected to change as may be approved by relevant authorities. All floor plans are approximate measurements only and are subjected to government re-survey. The balcony shall not be enclosed unless with the approved balcony screen. For an illustration of the approved balcony screen, please refer to the diagram annexed hereto as "Annexure A".

# 1-BEDROOM + STUDY

## TYPE AS2

45 sq m / 484 sq ft

BLK 1  
#40-04 to #44-04  
#46-04 to #47-04



**LEGEND (WHERE APPLICABLE)**  
**DB** Distribution Board    **WD** Washer cum Dryer    **WD** Washer and Dryer    **F** Fridge    **DW** Dishwasher    **WIW** Walk-In Wardrobe  
**WC** Water Closet    **ST** Storage    **HS** Household Shelter    **TB** Tallboy    **CH** Wine Chiller

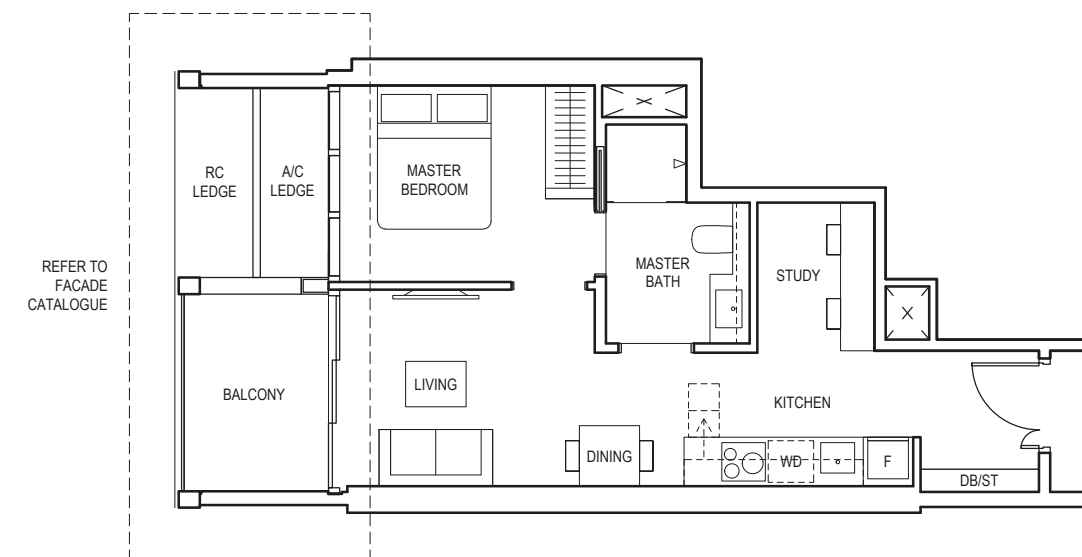
Area includes air-con (a/c) ledge, balcony and void where applicable. Please refer to the keyplan for orientation. The plans are subjected to change as may be approved by relevant authorities. All floor plans are approximate measurements only and are subjected to government re-survey. The balcony shall not be enclosed unless with the approved balcony screen. For an illustration of the approved balcony screen, please refer to the diagram annexed hereto as "Annexure A".

# 1-BEDROOM + STUDY

## TYPE AS2a

50 sq m / 538 sq ft

BLK 1  
#04-04 to #22-04  
#25-04 to #39-04



**LEGEND (WHERE APPLICABLE)**  
**DB** Distribution Board    **WD** Washer cum Dryer    **WD** Washer and Dryer    **F** Fridge    **DW** Dishwasher    **WIW** Walk-In Wardrobe  
**WC** Water Closet    **ST** Storage    **HS** Household Shelter    **TB** Tallboy    **CH** Wine Chiller

Area includes air-con (a/c) ledge, balcony and void where applicable. Please refer to the keyplan for orientation. The plans are subjected to change as may be approved by relevant authorities. All floor plans are approximate measurements only and are subjected to government re-survey. The balcony shall not be enclosed unless with the approved balcony screen. For an illustration of the approved balcony screen, please refer to the diagram annexed hereto as "Annexure A".

## TYPE AS2a(p)

50 sq m / 538 sq ft

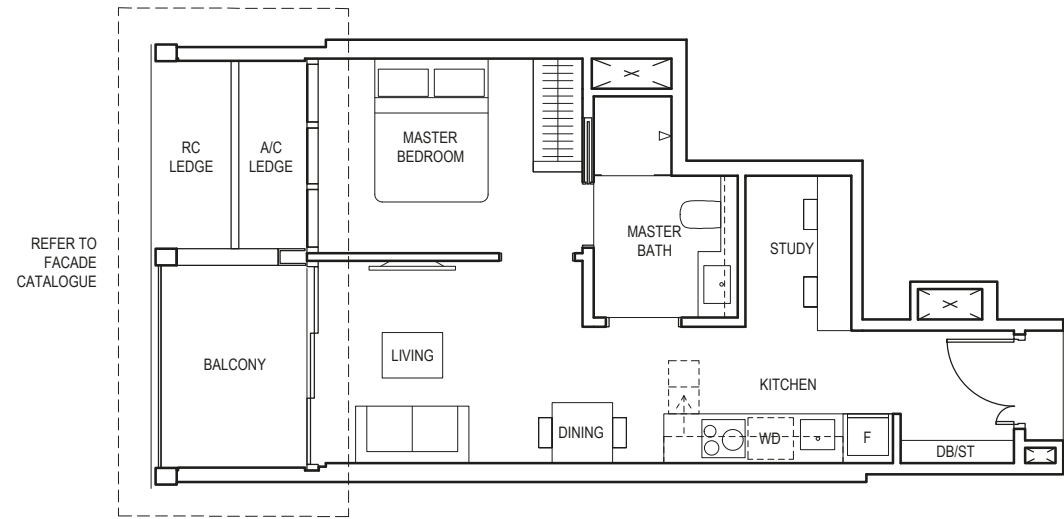
BLK 1  
#23-04

# 1-BEDROOM + STUDY

## TYPE AS2b

50 sq m / 538 sq ft

BLK 5  
#04-19 to #23-19



**LEGEND (WHERE APPLICABLE)**  
**DB** Distribution Board    **WD** Washer cum Dryer    **WD** Washer and Dryer    **F** Fridge    **DW** Dishwasher    **WIW** Walk-In Wardrobe  
**WC** Water Closet    **ST** Storage    **HS** Household Shelter    **TB** Tallboy    **CH** Wine Chiller

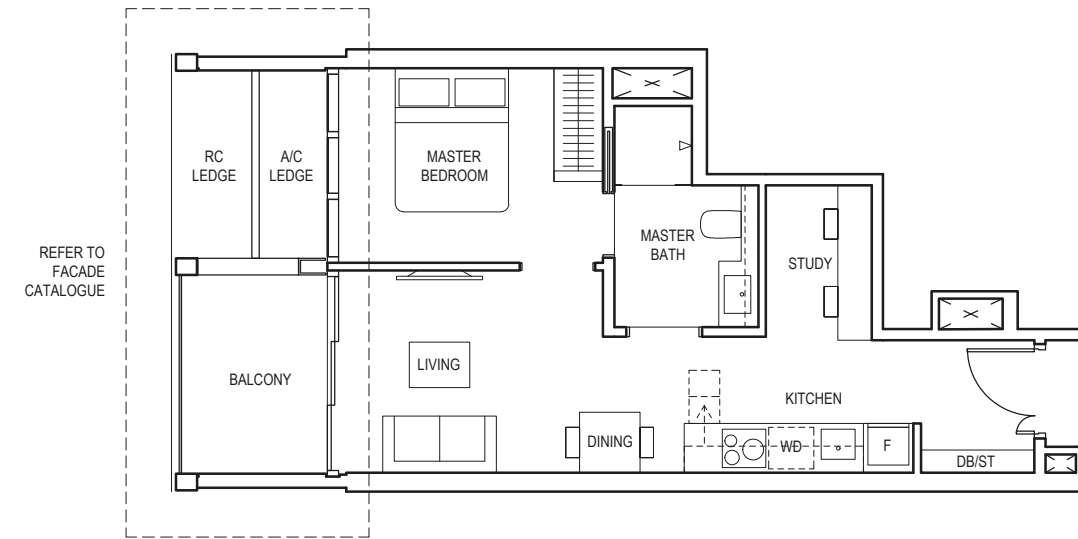
Area includes air-con (a/c) ledge, balcony and void where applicable. Please refer to the keyplan for orientation. The plans are subjected to change as may be approved by relevant authorities. All floor plans are approximate measurements only and are subjected to government re-survey. The balcony shall not be enclosed unless with the approved balcony screen. For an illustration of the approved balcony screen, please refer to the diagram annexed hereto as "Annexure A".

# 1-BEDROOM + STUDY

## TYPE AS2c

50 sq m / 538 sq ft

BLK 5  
#04-18 to #23-18



**LEGEND (WHERE APPLICABLE)**  
**DB** Distribution Board    **WD** Washer cum Dryer    **WD** Washer and Dryer    **F** Fridge    **DW** Dishwasher    **WIW** Walk-In Wardrobe  
**WC** Water Closet    **ST** Storage    **HS** Household Shelter    **TB** Tallboy    **CH** Wine Chiller

Area includes air-con (a/c) ledge, balcony and void where applicable. Please refer to the keyplan for orientation. The plans are subjected to change as may be approved by relevant authorities. All floor plans are approximate measurements only and are subjected to government re-survey. The balcony shall not be enclosed unless with the approved balcony screen. For an illustration of the approved balcony screen, please refer to the diagram annexed hereto as "Annexure A".

# 1-BEDROOM + STUDY

## TYPE AS3

45 sq m / 484 sq ft

BLK 1  
#40-03 to #44-03  
#46-03 to #47-03

## TYPE AS3(p)

45 sq m / 484 sq ft

BLK 1  
#48-03

# 1-BEDROOM + STUDY

## TYPE AS3a

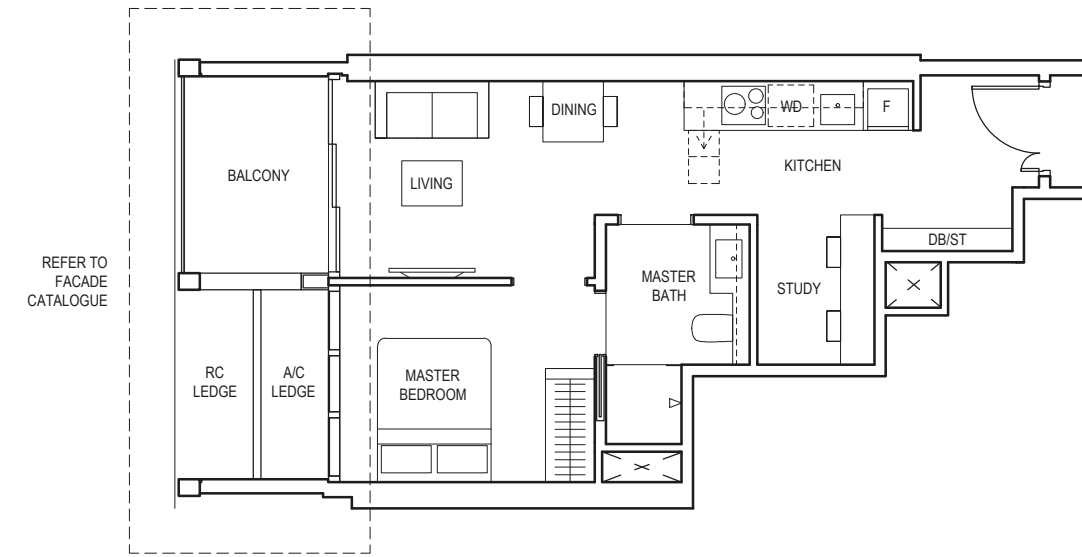
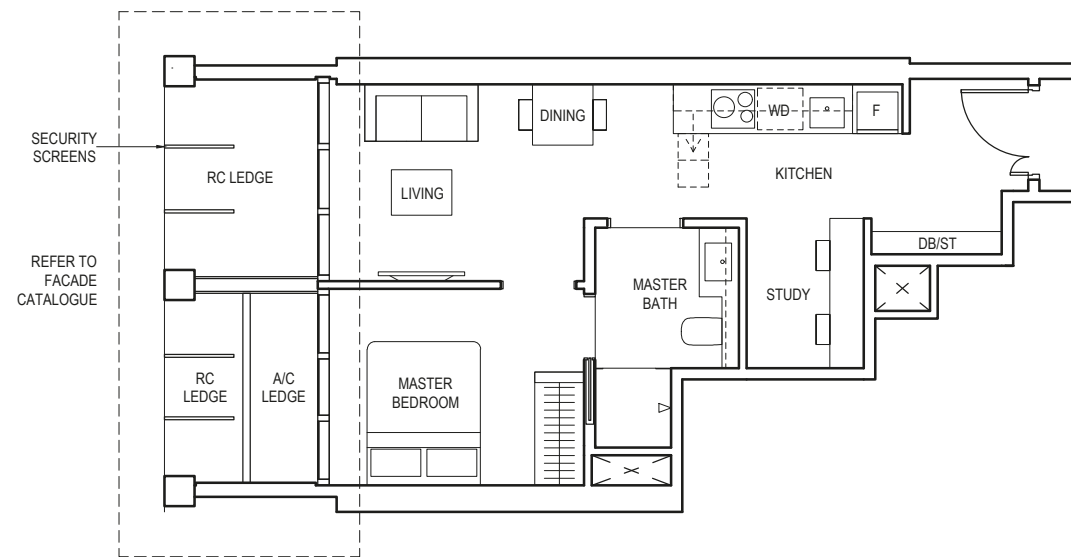
51 sq m / 549 sq ft

BLK 1  
#04-03 to #22-03  
#25-03 to #39-03

## TYPE AS3a(p)

51 sq m / 549 sq ft

BLK 1  
#23-03



**LEGEND (WHERE APPLICABLE)**  
**DB** Distribution Board    **WD** Washer cum Dryer    **W/D** Washer and Dryer    **F** Fridge    **DW** Dishwasher    **WIW** Walk-In Wardrobe  
**WC** Water Closet    **ST** Storage    **HS** Household Shelter    **TB** Tallboy    **CH** Wine Chiller

Area includes air-con (a/c) ledge, balcony and void where applicable. Please refer to the keyplan for orientation. The plans are subjected to change as may be approved by relevant authorities. All floor plans are approximate measurements only and are subjected to government re-survey. The balcony shall not be enclosed unless with the approved balcony screen. For an illustration of the approved balcony screen, please refer to the diagram annexed hereto as "Annexure A".



**LEGEND (WHERE APPLICABLE)**  
**DB** Distribution Board    **WD** Washer cum Dryer    **W/D** Washer and Dryer    **F** Fridge    **DW** Dishwasher    **WIW** Walk-In Wardrobe  
**WC** Water Closet    **ST** Storage    **HS** Household Shelter    **TB** Tallboy    **CH** Wine Chiller

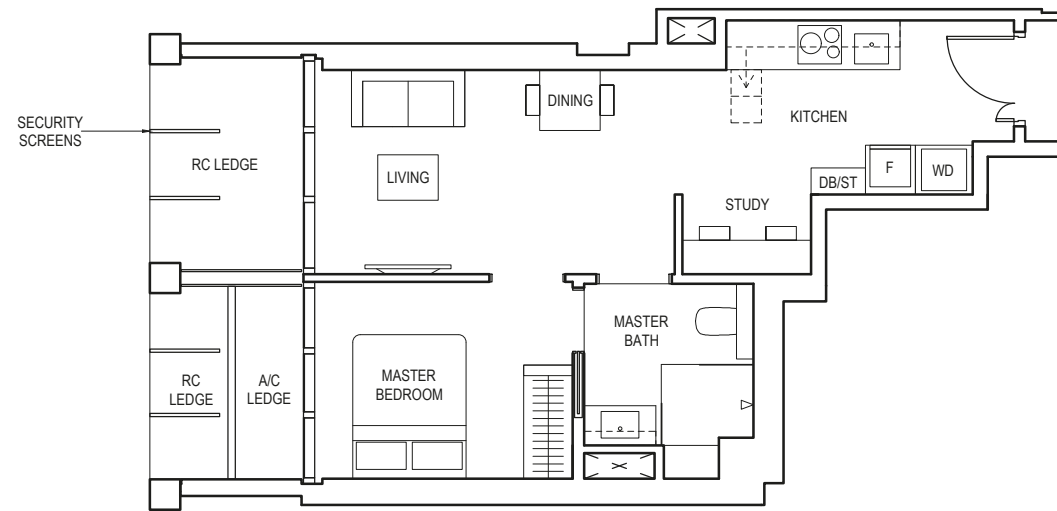
Area includes air-con (a/c) ledge, balcony and void where applicable. Please refer to the keyplan for orientation. The plans are subjected to change as may be approved by relevant authorities. All floor plans are approximate measurements only and are subjected to government re-survey. The balcony shall not be enclosed unless with the approved balcony screen. For an illustration of the approved balcony screen, please refer to the diagram annexed hereto as "Annexure A".

# 1-BEDROOM + STUDY

## TYPE AS4

47 sq m / 506 sq ft

BLK 1  
#46-02 to #47-02



**LEGEND (WHERE APPLICABLE)**  
**DB** Distribution Board    **WD** Washer cum Dryer    **W/D** Washer and Dryer    **F** Fridge    **DW** Dishwasher    **WIW** Walk-In Wardrobe  
**WC** Water Closet    **ST** Storage    **HS** Household Shelter    **TB** Tallboy    **CH** Wine Chiller

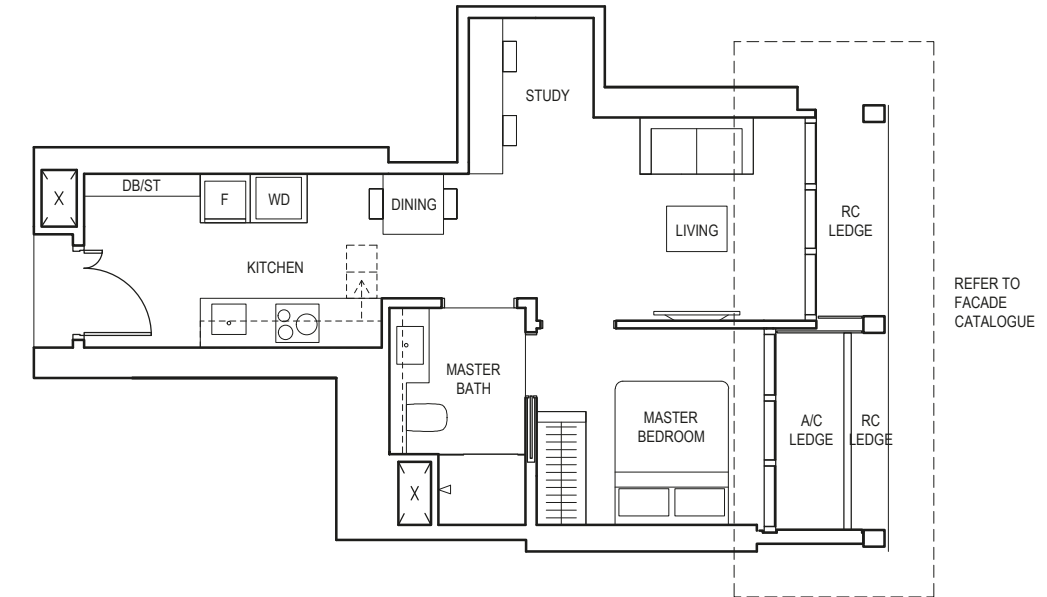
Area includes air-con (a/c) ledge, balcony and void where applicable. Please refer to the keyplan for orientation. The plans are subjected to change as may be approved by relevant authorities. All floor plans are approximate measurements only and are subjected to government re-survey. The balcony shall not be enclosed unless with the approved balcony screen. For an illustration of the approved balcony screen, please refer to the diagram annexed hereto as "Annexure A".

# 1-BEDROOM + STUDY

## TYPE AS5

47 sq m / 506 sq ft

BLK 1  
#04-08 to #23-08



**LEGEND (WHERE APPLICABLE)**  
**DB** Distribution Board    **WD** Washer cum Dryer    **W/D** Washer and Dryer    **F** Fridge    **DW** Dishwasher    **WIW** Walk-In Wardrobe  
**WC** Water Closet    **ST** Storage    **HS** Household Shelter    **TB** Tallboy    **CH** Wine Chiller

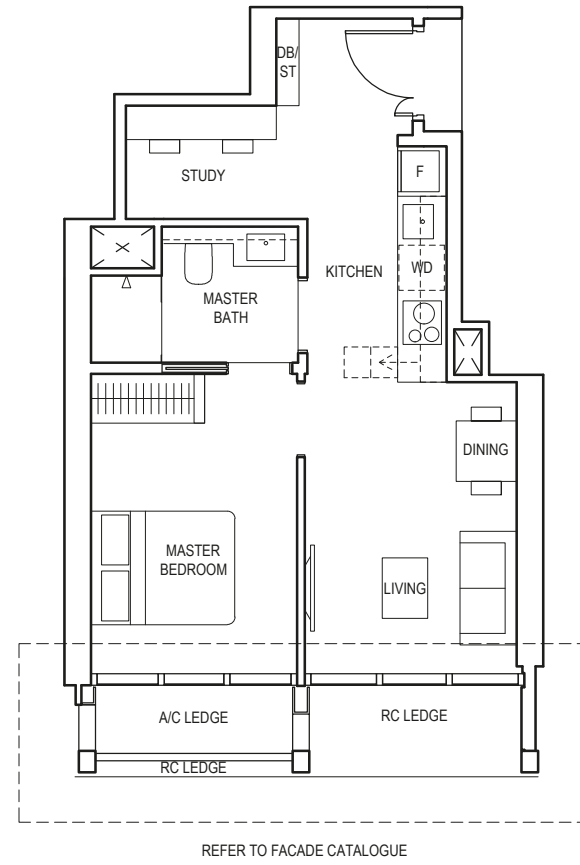
Area includes air-con (a/c) ledge, balcony and void where applicable. Please refer to the keyplan for orientation. The plans are subjected to change as may be approved by relevant authorities. All floor plans are approximate measurements only and are subjected to government re-survey. The balcony shall not be enclosed unless with the approved balcony screen. For an illustration of the approved balcony screen, please refer to the diagram annexed hereto as "Annexure A".

# 1-BEDROOM + STUDY

## TYPE AS6

47 sq m / 506 sq ft

BLK 5  
#04-16 to #23-16



**LEGEND (WHERE APPLICABLE)**  
**DB** Distribution Board    **WD** Washer cum Dryer    **W/D** Washer and Dryer    **F** Fridge    **DW** Dishwasher    **WIW** Walk-In Wardrobe  
**WC** Water Closet    **ST** Storage    **HS** Household Shelter    **TB** Tallboy    **CH** Wine Chiller

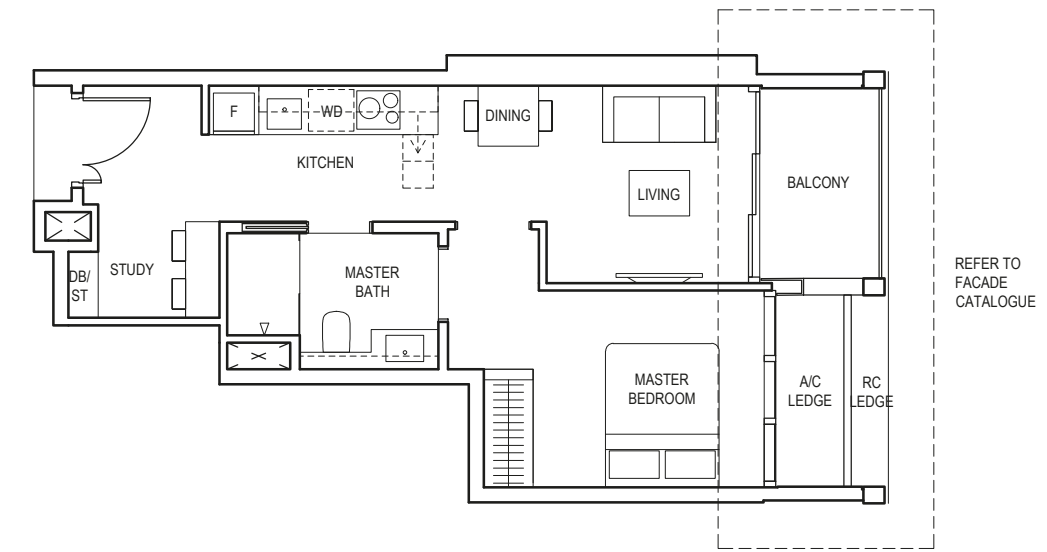
Area includes air-con (a/c) ledge, balcony and void where applicable. Please refer to the keyplan for orientation. The plans are subjected to change as may be approved by relevant authorities. All floor plans are approximate measurements only and are subjected to government re-survey. The balcony shall not be enclosed unless with the approved balcony screen. For an illustration of the approved balcony screen, please refer to the diagram annexed hereto as "Annexure A".

# 1-BEDROOM + STUDY

## TYPE AS7

50 sq m / 538 sq ft

BLK 1  
#04-10 to #23-10



**LEGEND (WHERE APPLICABLE)**  
**DB** Distribution Board    **WD** Washer cum Dryer    **W/D** Washer and Dryer    **F** Fridge    **DW** Dishwasher    **WIW** Walk-In Wardrobe  
**WC** Water Closet    **ST** Storage    **HS** Household Shelter    **TB** Tallboy    **CH** Wine Chiller

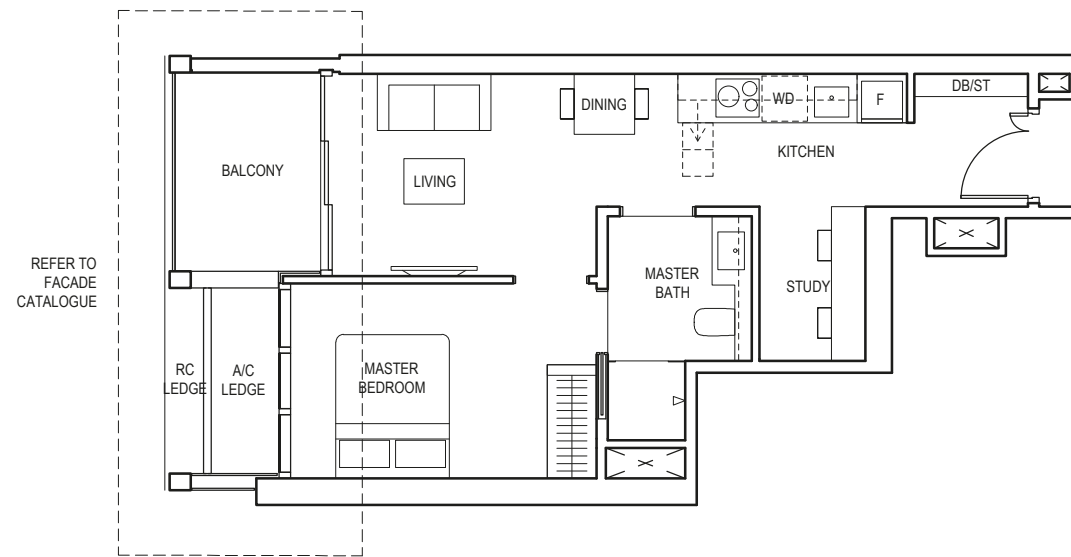
Area includes air-con (a/c) ledge, balcony and void where applicable. Please refer to the keyplan for orientation. The plans are subjected to change as may be approved by relevant authorities. All floor plans are approximate measurements only and are subjected to government re-survey. The balcony shall not be enclosed unless with the approved balcony screen. For an illustration of the approved balcony screen, please refer to the diagram annexed hereto as "Annexure A".

# 1-BEDROOM + STUDY

## TYPE AS8

52 sq m / 560 sq ft

BLK 5  
#04-17 to #23-17



**LEGEND (WHERE APPLICABLE)**  
 DB Distribution Board    WD Washer cum Dryer    W/D Washer and Dryer    F Fridge    DW Dishwasher    WIW Walk-In Wardrobe  
 WC Water Closet    ST Storage    HS Household Shelter    TB Tallboy    CH Wine Chiller

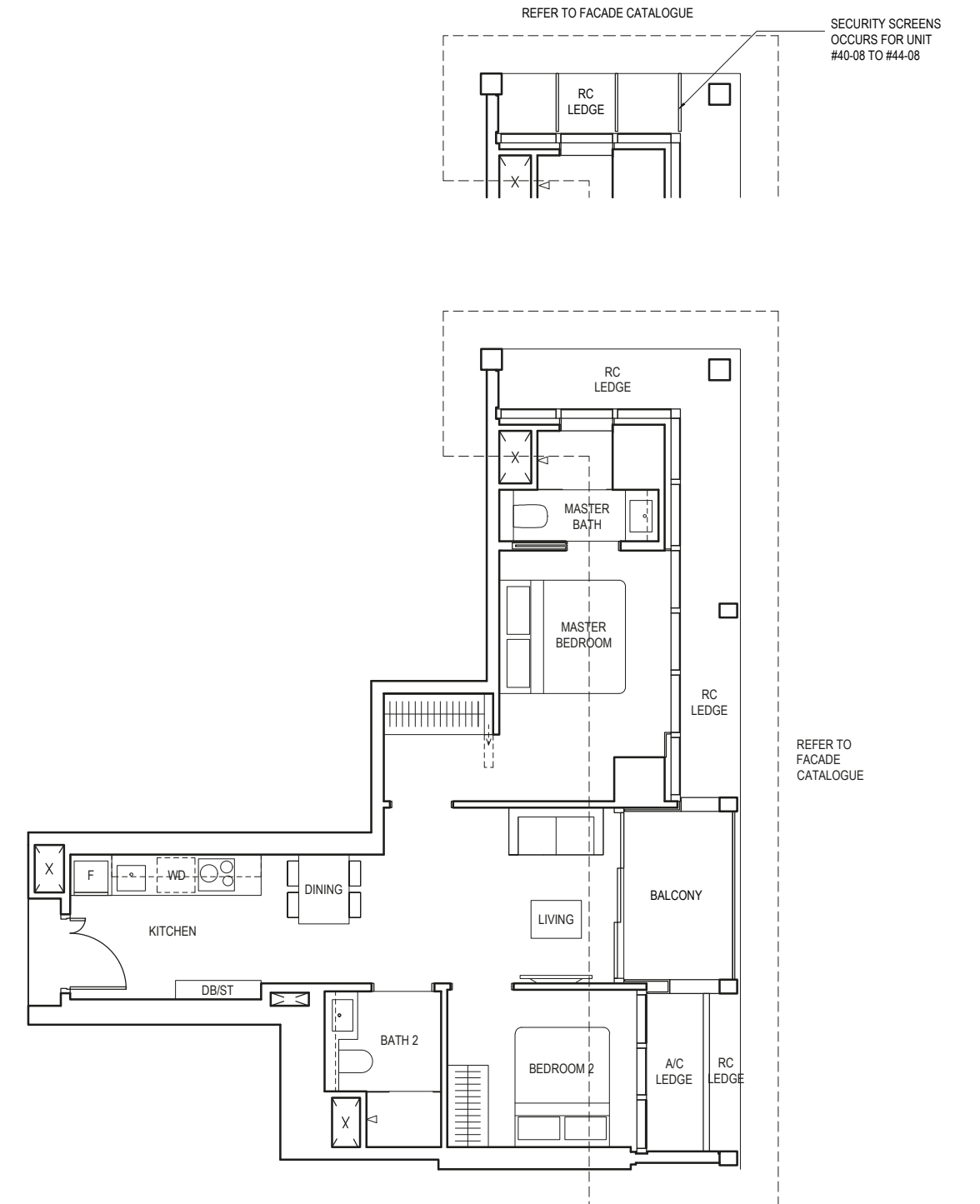
Area includes air-con (a/c) ledge, balcony and void where applicable. Please refer to the keyplan for orientation. The plans are subjected to change as may be approved by relevant authorities. All floor plans are approximate measurements only and are subjected to government re-survey. The balcony shall not be enclosed unless with the approved balcony screen. For an illustration of the approved balcony screen, please refer to the diagram annexed hereto as "Annexure A".

# 2-BEDROOM

## TYPE B1

68 sq m / 732 sq ft

BLK 1  
#25-08 to #44-08



**LEGEND (WHERE APPLICABLE)**  
 DB Distribution Board    WD Washer cum Dryer    W/D Washer and Dryer    F Fridge    DW Dishwasher    WIW Walk-In Wardrobe  
 WC Water Closet    ST Storage    HS Household Shelter    TB Tallboy    CH Wine Chiller

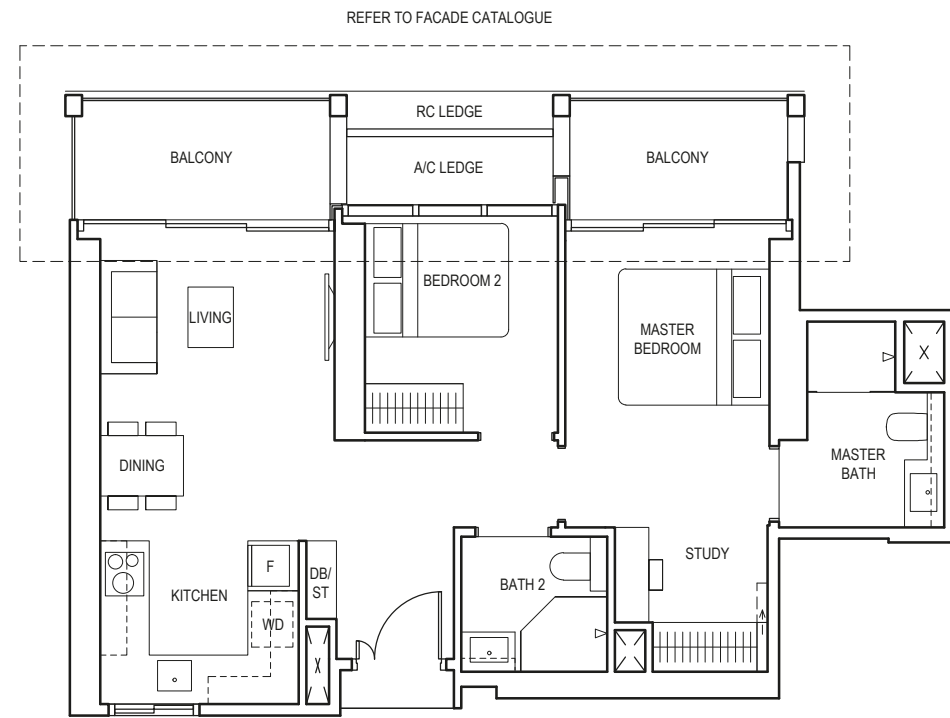
Area includes air-con (a/c) ledge, balcony and void where applicable. Please refer to the keyplan for orientation. The plans are subjected to change as may be approved by relevant authorities. All floor plans are approximate measurements only and are subjected to government re-survey. The balcony shall not be enclosed unless with the approved balcony screen. For an illustration of the approved balcony screen, please refer to the diagram annexed hereto as "Annexure A".

# 2-BEDROOM + ENSUITE STUDY

## TYPE B1(S)

77 sq m / 829 sq ft

BLK 1  
#04-07 to #23-07



**LEGEND (WHERE APPLICABLE)**  
 DB Distribution Board    WD Washer cum Dryer    W/D Washer and Dryer    F Fridge    DW Dishwasher    WIW Walk-In Wardrobe  
 WC Water Closet    ST Storage    HS Household Shelter    TB Tallboy    CH Wine Chiller

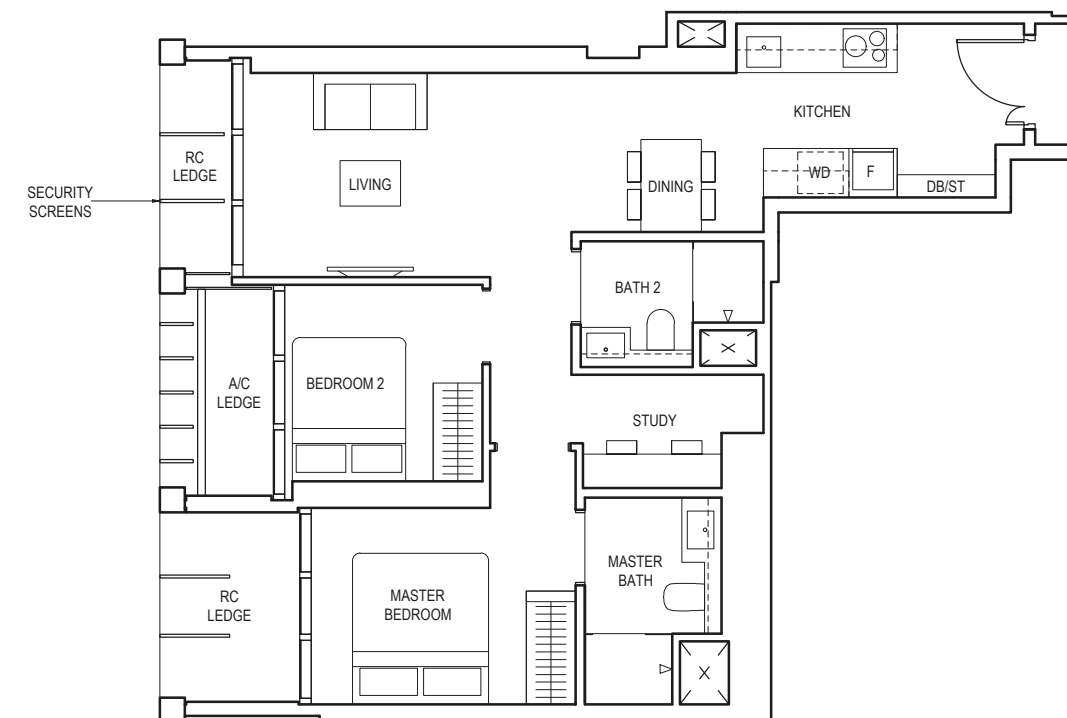
Area includes air-con (a/c) ledge, balcony and void where applicable. Please refer to the keyplan for orientation. The plans are subjected to change as may be approved by relevant authorities. All floor plans are approximate measurements only and are subjected to government re-survey. The balcony shall not be enclosed unless with the approved balcony screen. For an illustration of the approved balcony screen, please refer to the diagram annexed hereto as "Annexure A".

# 2-BEDROOM + STUDY

## TYPE BS1

68 sq m / 732 sq ft

BLK 1  
#40-02 to #44-02



**LEGEND (WHERE APPLICABLE)**  
 DB Distribution Board    WD Washer cum Dryer    W/D Washer and Dryer    F Fridge    DW Dishwasher    WIW Walk-In Wardrobe  
 WC Water Closet    ST Storage    HS Household Shelter    TB Tallboy    CH Wine Chiller

Area includes air-con (a/c) ledge, balcony and void where applicable. Please refer to the keyplan for orientation. The plans are subjected to change as may be approved by relevant authorities. All floor plans are approximate measurements only and are subjected to government re-survey. The balcony shall not be enclosed unless with the approved balcony screen. For an illustration of the approved balcony screen, please refer to the diagram annexed hereto as "Annexure A".

# 2-BEDROOM + STUDY

## TYPE BS1a

76 sq m / 818 sq ft

BLK 1  
#04-02 to #22-02  
#25-02 to #39-02

## TYPE BS1a(p)

76 sq m / 818 sq ft

BLK 1  
#23-02



**LEGEND (WHERE APPLICABLE)**  
 DB Distribution Board    WD Washer cum Dryer    W/D Washer and Dryer    F Fridge    DW Dishwasher    WIW Walk-In Wardrobe  
 WC Water Closet    ST Storage    HS Household Shelter    TB Tallboy    CH Wine Chiller

Area includes air-con (a/c) ledge, balcony and void where applicable. Please refer to the keyplan for orientation. The plans are subjected to change as may be approved by relevant authorities. All floor plans are approximate measurements only and are subjected to government re-survey. The balcony shall not be enclosed unless with the approved balcony screen. For an illustration of the approved balcony screen, please refer to the diagram annexed hereto as "Annexure A".

# 2-BEDROOM + STUDY

## TYPE BS2

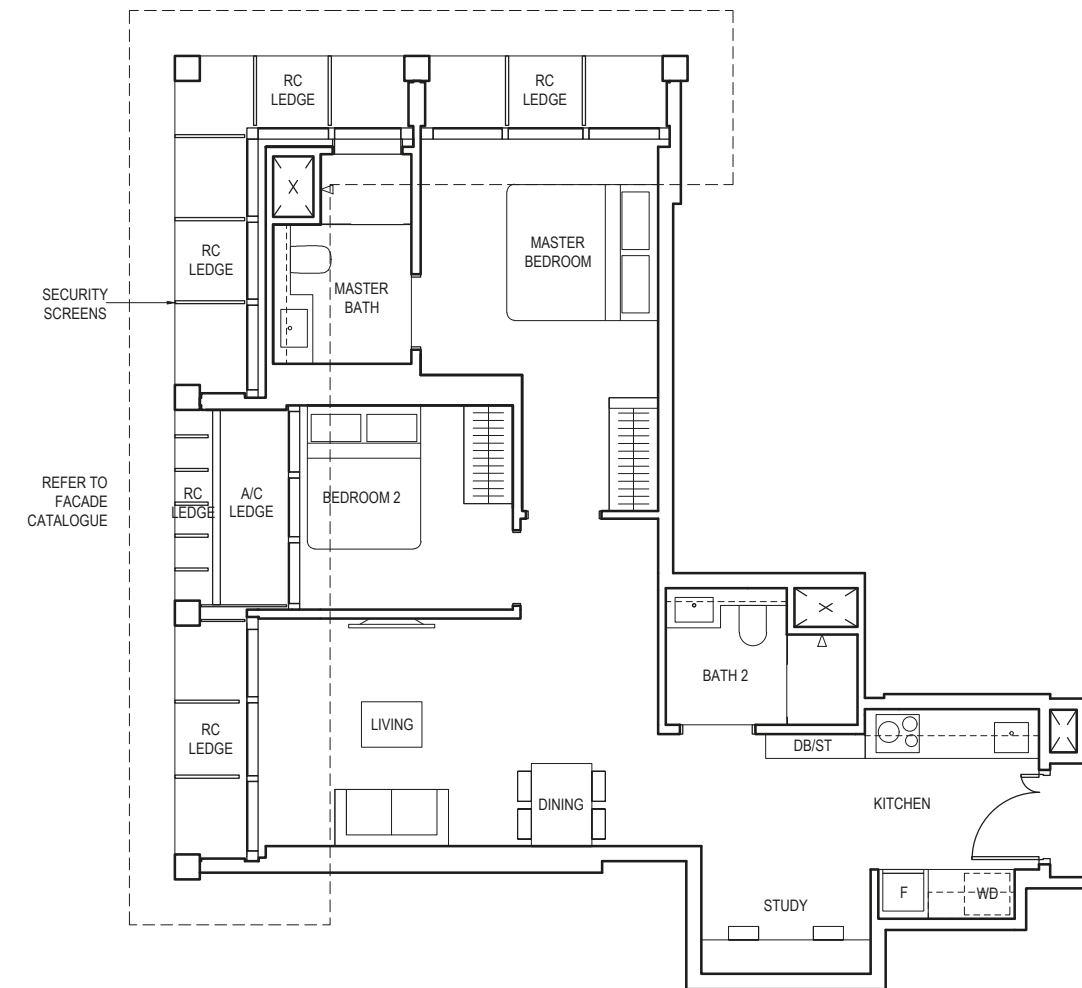
74 sq m / 797 sq ft

BLK 1  
#40-05 to #44-05  
#46-05 to #47-05

## TYPE BS2(p)

74 sq m / 797 sq ft

BLK 1  
#48-05



**LEGEND (WHERE APPLICABLE)**  
 DB Distribution Board    WD Washer cum Dryer    W/D Washer and Dryer    F Fridge    DW Dishwasher    WIW Walk-In Wardrobe  
 WC Water Closet    ST Storage    HS Household Shelter    TB Tallboy    CH Wine Chiller

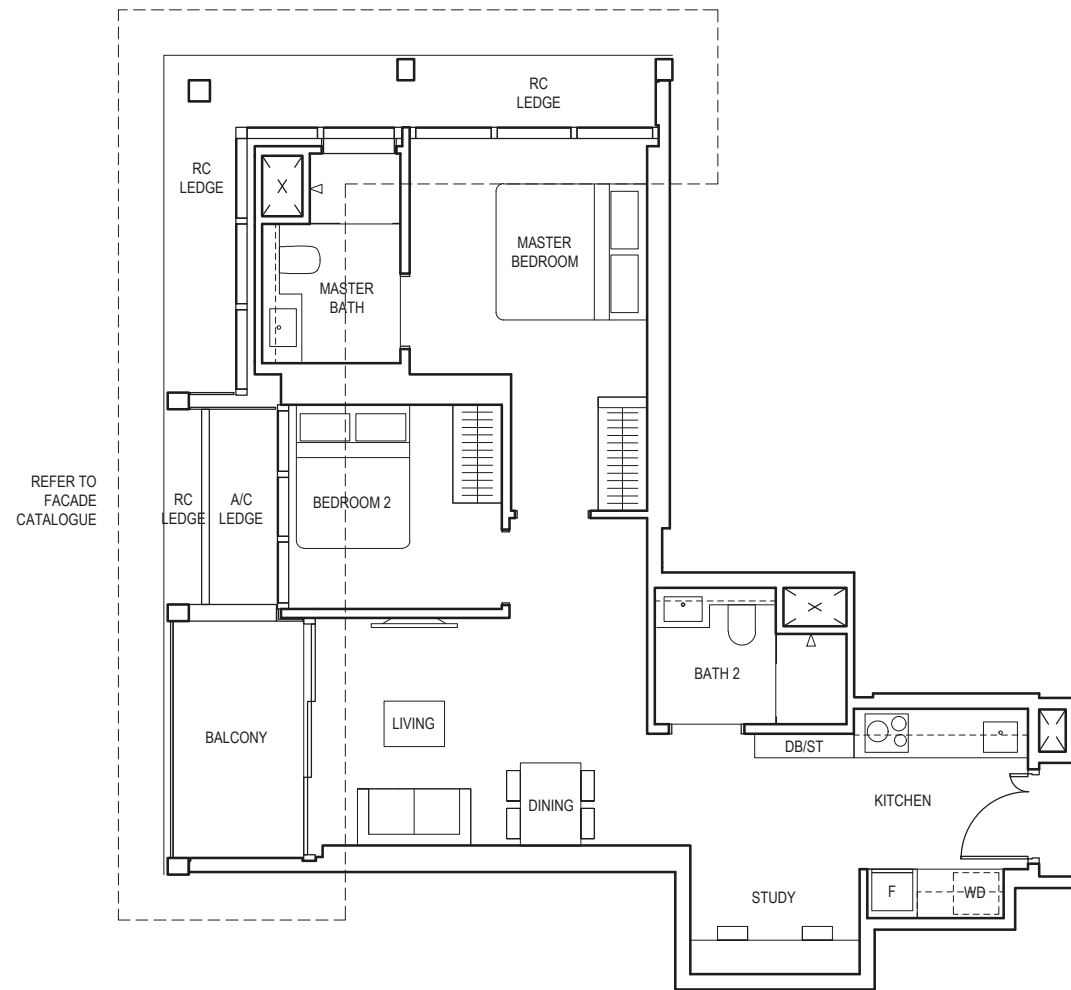
Area includes air-con (a/c) ledge, balcony and void where applicable. Please refer to the keyplan for orientation. The plans are subjected to change as may be approved by relevant authorities. All floor plans are approximate measurements only and are subjected to government re-survey. The balcony shall not be enclosed unless with the approved balcony screen. For an illustration of the approved balcony screen, please refer to the diagram annexed hereto as "Annexure A".

# 2-BEDROOM + STUDY

## TYPE BS2a

77 sq m / 829 sq ft

BLK 1  
#04-05 to #22-05  
#25-05 to #39-05



**LEGEND (WHERE APPLICABLE)**  
**DB** Distribution Board    **WD** Washer cum Dryer    **WD** Washer and Dryer    **F** Fridge    **DW** Dishwasher    **WIW** Walk-In Wardrobe  
**WC** Water Closet    **ST** Storage    **HS** Household Shelter    **TB** Tallboy    **CH** Wine Chiller

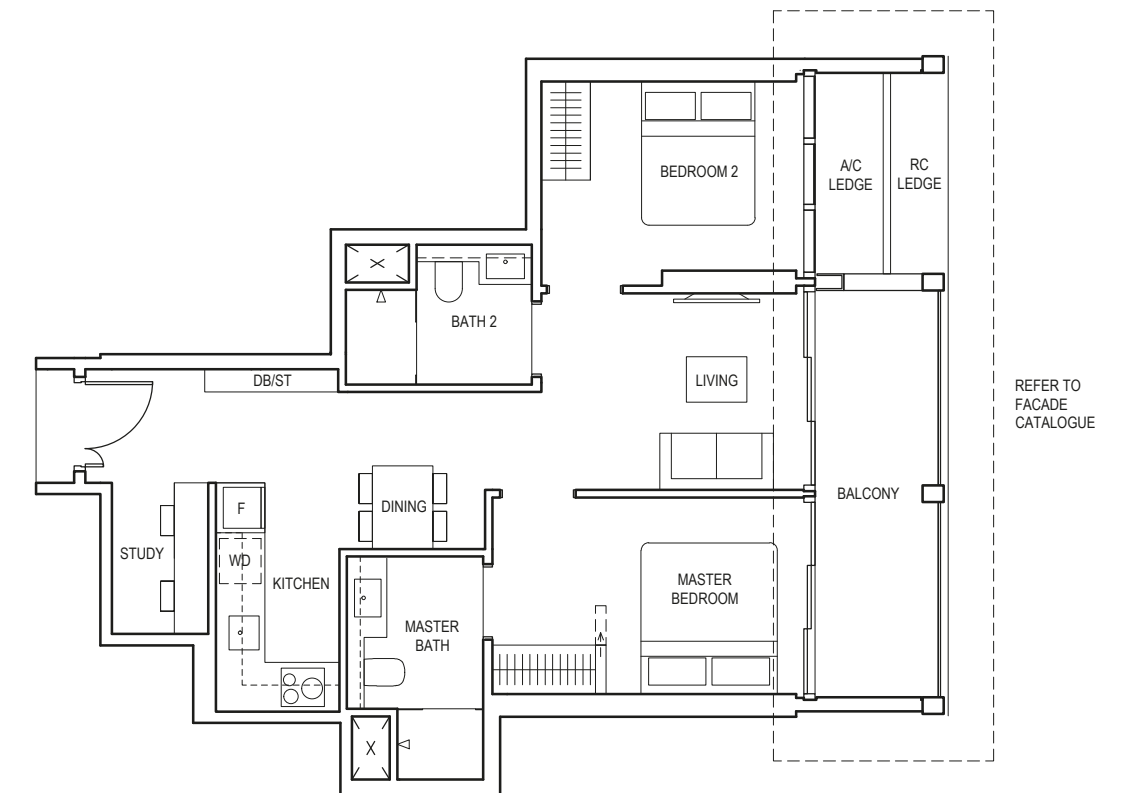
Area includes air-con (a/c) ledge, balcony and void where applicable. Please refer to the keyplan for orientation. The plans are subjected to change as may be approved by relevant authorities. All floor plans are approximate measurements only and are subjected to government re-survey. The balcony shall not be enclosed unless with the approved balcony screen. For an illustration of the approved balcony screen, please refer to the diagram annexed hereto as "Annexure A".

# 2-BEDROOM + STUDY

## TYPE BS3

75 sq m / 807 sq ft

BLK 5  
#04-24 to #23-24



**LEGEND (WHERE APPLICABLE)**  
**DB** Distribution Board    **WD** Washer cum Dryer    **WD** Washer and Dryer    **F** Fridge    **DW** Dishwasher    **WIW** Walk-In Wardrobe  
**WC** Water Closet    **ST** Storage    **HS** Household Shelter    **TB** Tallboy    **CH** Wine Chiller

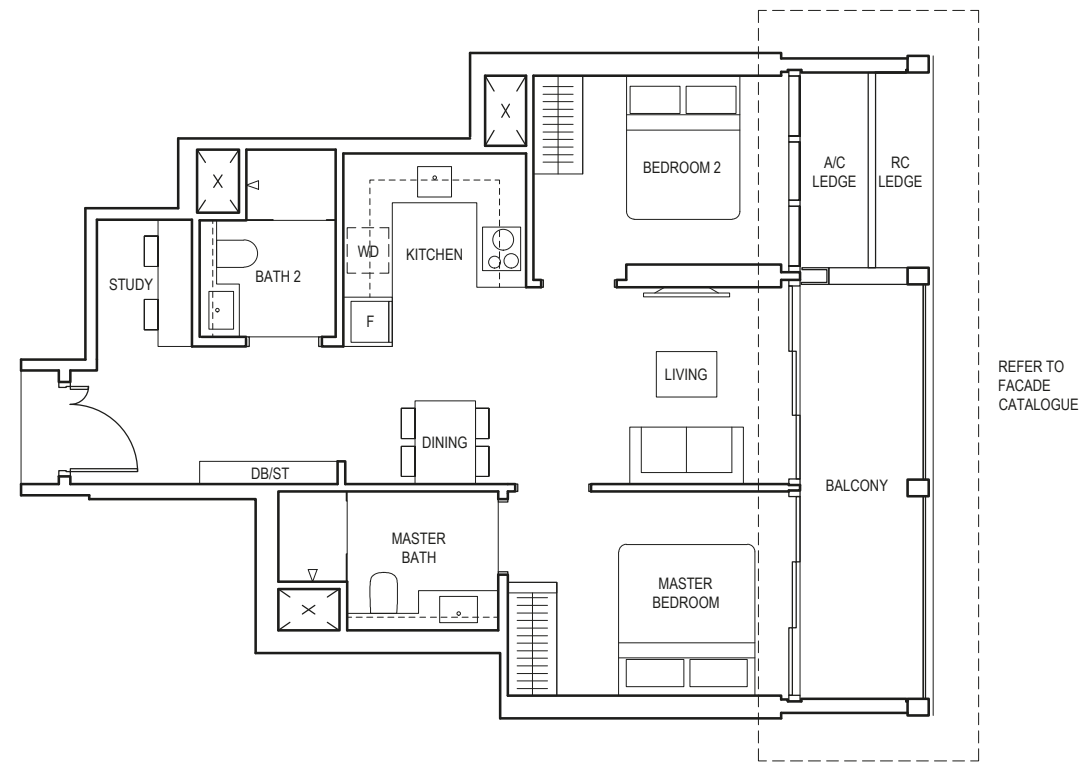
Area includes air-con (a/c) ledge, balcony and void where applicable. Please refer to the keyplan for orientation. The plans are subjected to change as may be approved by relevant authorities. All floor plans are approximate measurements only and are subjected to government re-survey. The balcony shall not be enclosed unless with the approved balcony screen. For an illustration of the approved balcony screen, please refer to the diagram annexed hereto as "Annexure A".

# 2-BEDROOM + STUDY

## TYPE BS4

75 sq m / 807 sq ft

BLK 5  
#04-25 to #23-25



**LEGEND (WHERE APPLICABLE)**  
**DB** Distribution Board    **WD** Washer cum Dryer    **WD** Washer and Dryer    **F** Fridge    **DW** Dishwasher    **WIW** Walk-In Wardrobe  
**WC** Water Closet    **ST** Storage    **HS** Household Shelter    **TB** Tallboy    **CH** Wine Chiller

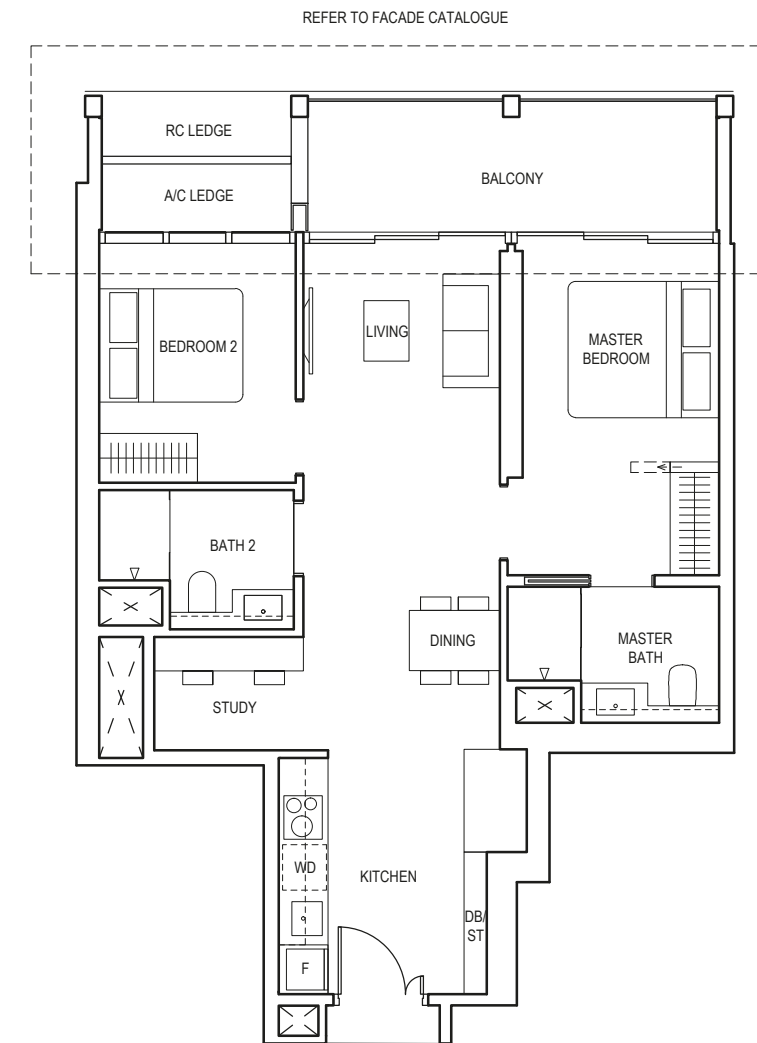
Area includes air-con (a/c) ledge, balcony and void where applicable. Please refer to the keyplan for orientation. The plans are subjected to change as may be approved by relevant authorities. All floor plans are approximate measurements only and are subjected to government re-survey. The balcony shall not be enclosed unless with the approved balcony screen. For an illustration of the approved balcony screen, please refer to the diagram annexed hereto as "Annexure A".

# 2-BEDROOM + STUDY

## TYPE BS5

80 sq m / 861 sq ft

BLK 5  
#04-21 to #23-21



**LEGEND (WHERE APPLICABLE)**  
**DB** Distribution Board    **WD** Washer cum Dryer    **WD** Washer and Dryer    **F** Fridge    **DW** Dishwasher    **WIW** Walk-In Wardrobe  
**WC** Water Closet    **ST** Storage    **HS** Household Shelter    **TB** Tallboy    **CH** Wine Chiller

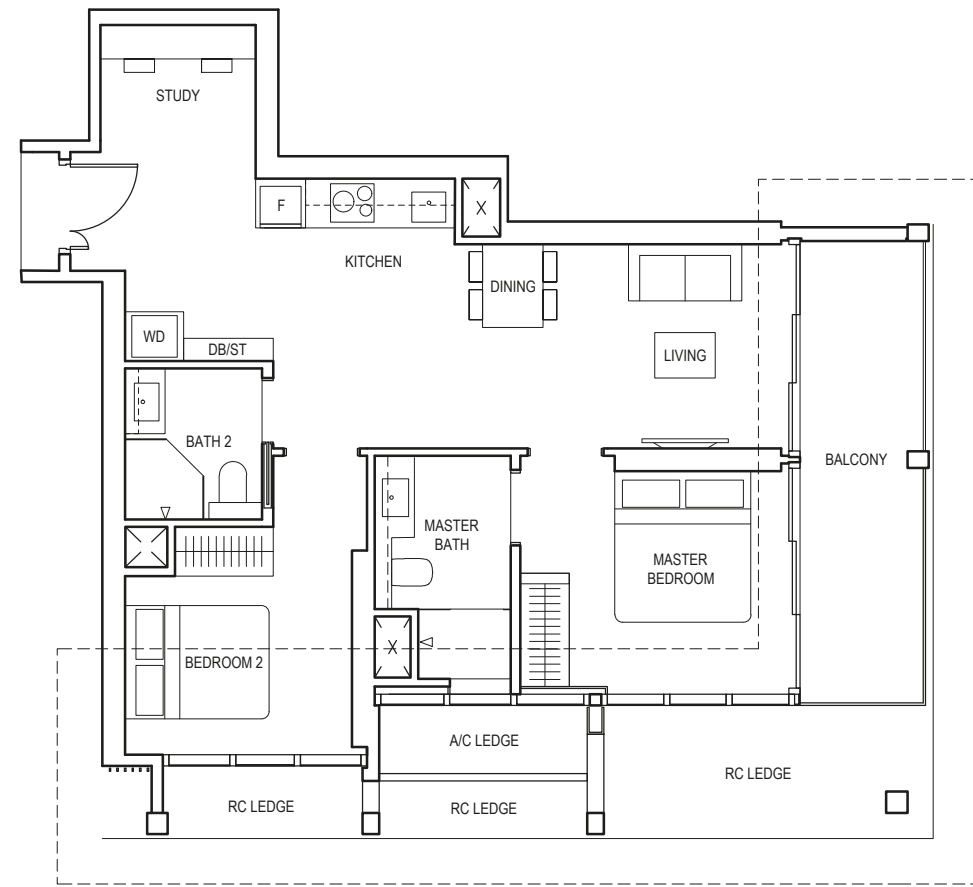
Area includes air-con (a/c) ledge, balcony and void where applicable. Please refer to the keyplan for orientation. The plans are subjected to change as may be approved by relevant authorities. All floor plans are approximate measurements only and are subjected to government re-survey. The balcony shall not be enclosed unless with the approved balcony screen. For an illustration of the approved balcony screen, please refer to the diagram annexed hereto as "Annexure A".

# 2-BEDROOM + STUDY

## TYPE BS6

82 sq m / 883 sq ft

BLK 5  
#04-26 to #23-26



REFER TO FACADE CATALOGUE



**LEGEND (WHERE APPLICABLE)**  
 DB Distribution Board    WD Washer cum Dryer    W/D Washer and Dryer    F Fridge    DW Dishwasher    WIW Walk-In Wardrobe  
 WC Water Closet    ST Storage    HS Household Shelter    TB Tallboy    CH Wine Chiller

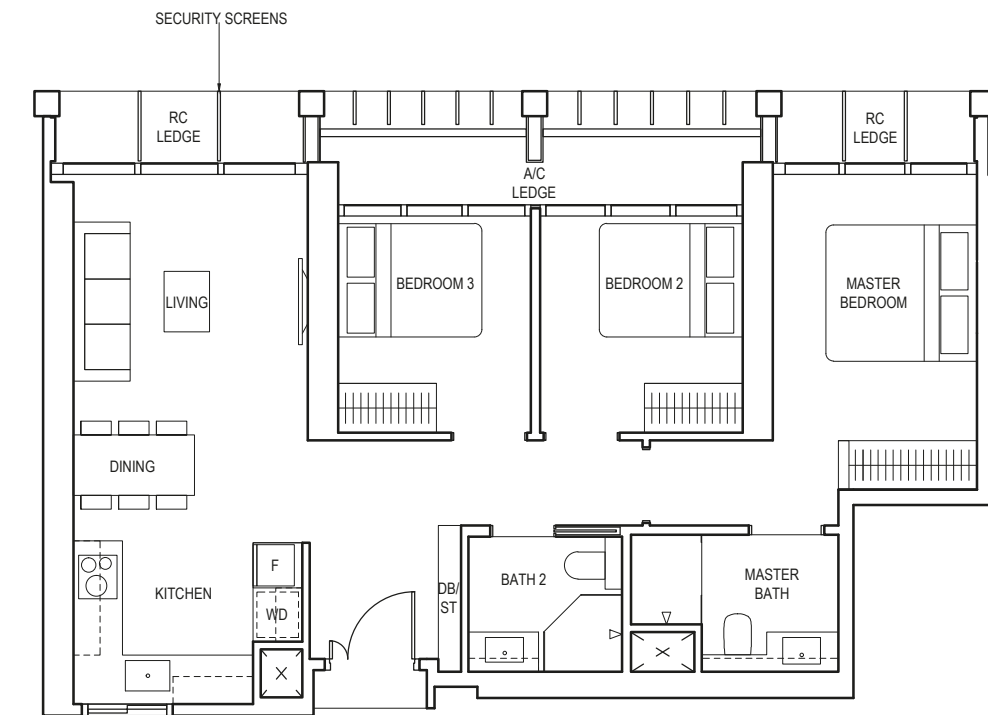
Area includes air-con (a/c) ledge, balcony and void where applicable. Please refer to the keyplan for orientation. The plans are subjected to change as may be approved by relevant authorities. All floor plans are approximate measurements only and are subjected to government re-survey. The balcony shall not be enclosed unless with the approved balcony screen. For an illustration of the approved balcony screen, please refer to the diagram annexed hereto as "Annexure A".

# 3-BEDROOM

## TYPE C1

83 sq m / 893 sq ft

BLK 1  
#40-07 to #44-07



**LEGEND (WHERE APPLICABLE)**  
 DB Distribution Board    WD Washer cum Dryer    W/D Washer and Dryer    F Fridge    DW Dishwasher    WIW Walk-In Wardrobe  
 WC Water Closet    ST Storage    HS Household Shelter    TB Tallboy    CH Wine Chiller

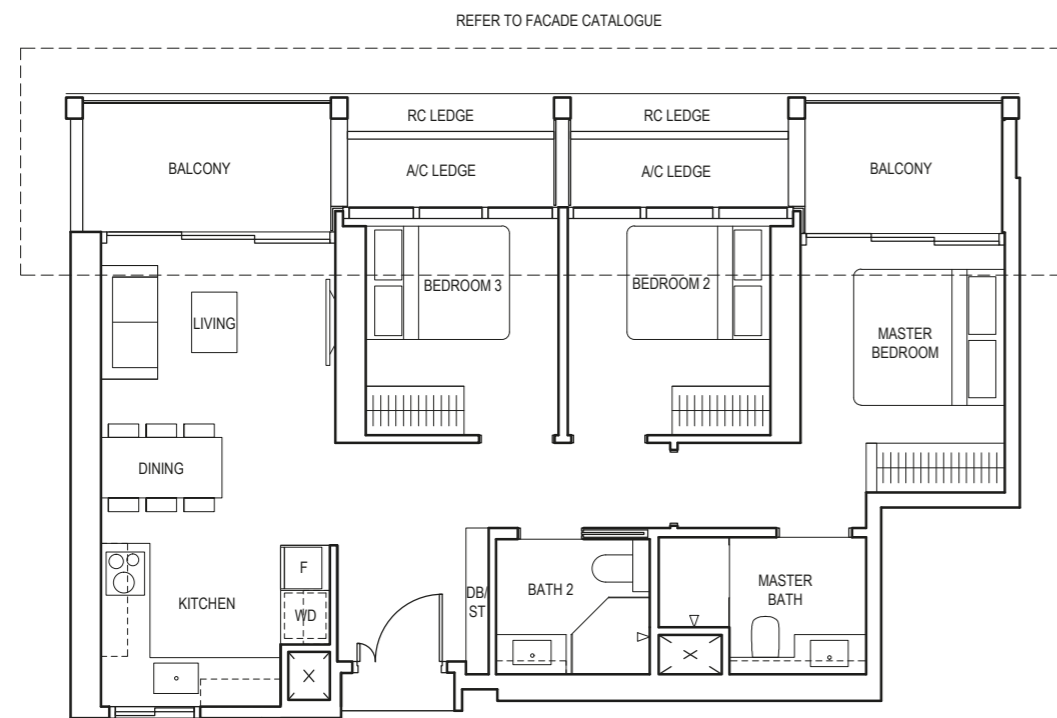
Area includes air-con (a/c) ledge, balcony and void where applicable. Please refer to the keyplan for orientation. The plans are subjected to change as may be approved by relevant authorities. All floor plans are approximate measurements only and are subjected to government re-survey. The balcony shall not be enclosed unless with the approved balcony screen. For an illustration of the approved balcony screen, please refer to the diagram annexed hereto as "Annexure A".

# 3-BEDROOM

## TYPE C1a

88 sq m / 947 sq ft

BLK 1  
#25-07 to #39-07



**LEGEND (WHERE APPLICABLE)**  
 DB Distribution Board    WD Washer cum Dryer    W/D Washer and Dryer    F Fridge    DW Dishwasher    WIW Walk-In Wardrobe  
 WC Water Closet    ST Storage    HS Household Shelter    TB Tallboy    CH Wine Chiller

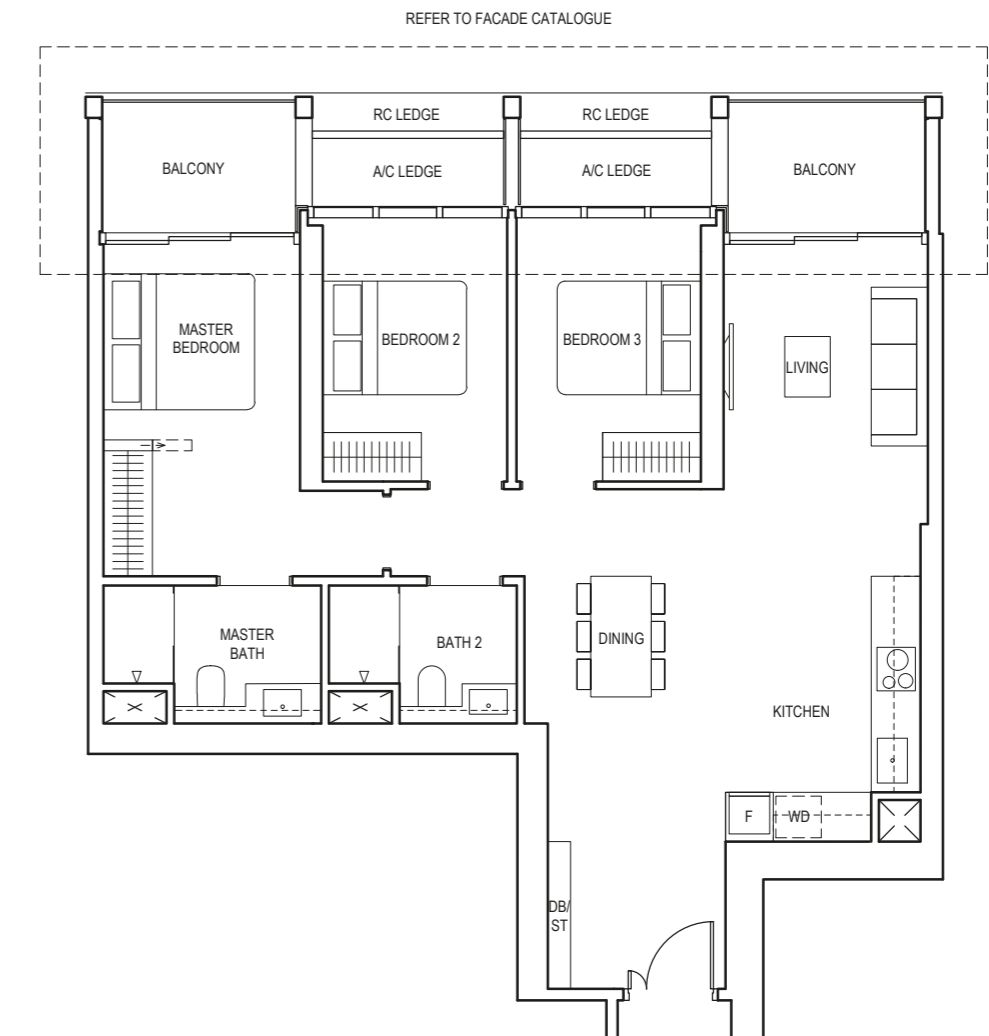
Area includes air-con (a/c) ledge, balcony and void where applicable. Please refer to the keyplan for orientation. The plans are subjected to change as may be approved by relevant authorities. All floor plans are approximate measurements only and are subjected to government re-survey. The balcony shall not be enclosed unless with the approved balcony screen. For an illustration of the approved balcony screen, please refer to the diagram annexed hereto as "Annexure A".

# 3-BEDROOM

## TYPE C2

105 sq m / 1130 sq ft

BLK 5  
#04-22 to #23-22



**LEGEND (WHERE APPLICABLE)**  
 DB Distribution Board    WD Washer cum Dryer    W/D Washer and Dryer    F Fridge    DW Dishwasher    WIW Walk-In Wardrobe  
 WC Water Closet    ST Storage    HS Household Shelter    TB Tallboy    CH Wine Chiller

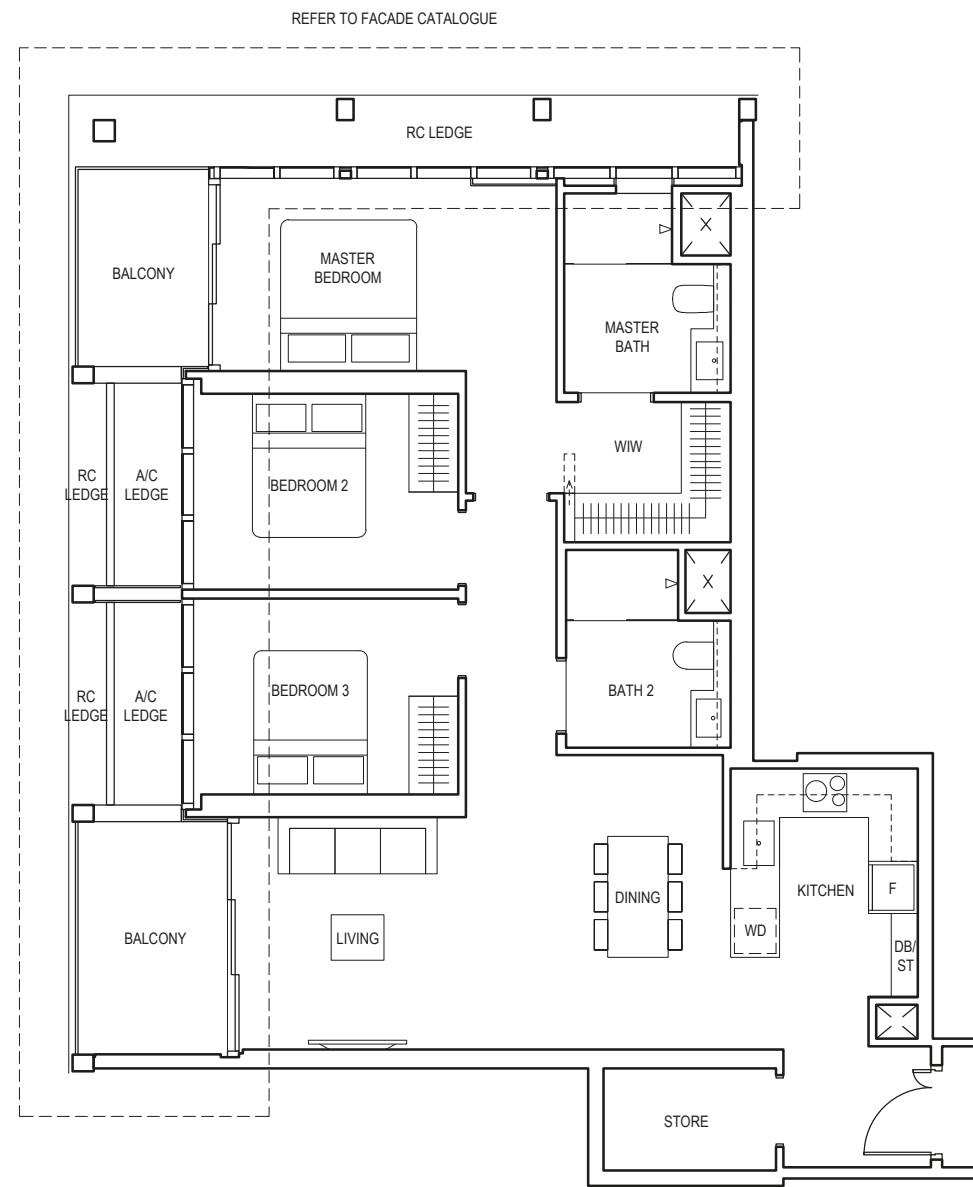
Area includes air-con (a/c) ledge, balcony and void where applicable. Please refer to the keyplan for orientation. The plans are subjected to change as may be approved by relevant authorities. All floor plans are approximate measurements only and are subjected to government re-survey. The balcony shall not be enclosed unless with the approved balcony screen. For an illustration of the approved balcony screen, please refer to the diagram annexed hereto as "Annexure A".

# 3-BEDROOM

## TYPE C3

117 sq m / 1259 sq ft

BLK 5  
#04-20 to #23-20



**LEGEND (WHERE APPLICABLE)**  
 DB Distribution Board    WD Washer cum Dryer    W/D Washer and Dryer    F Fridge    DW Dishwasher    WIW Walk-In Wardrobe  
 WC Water Closet    ST Storage    HS Household Shelter    TB Tallboy    CH Wine Chiller

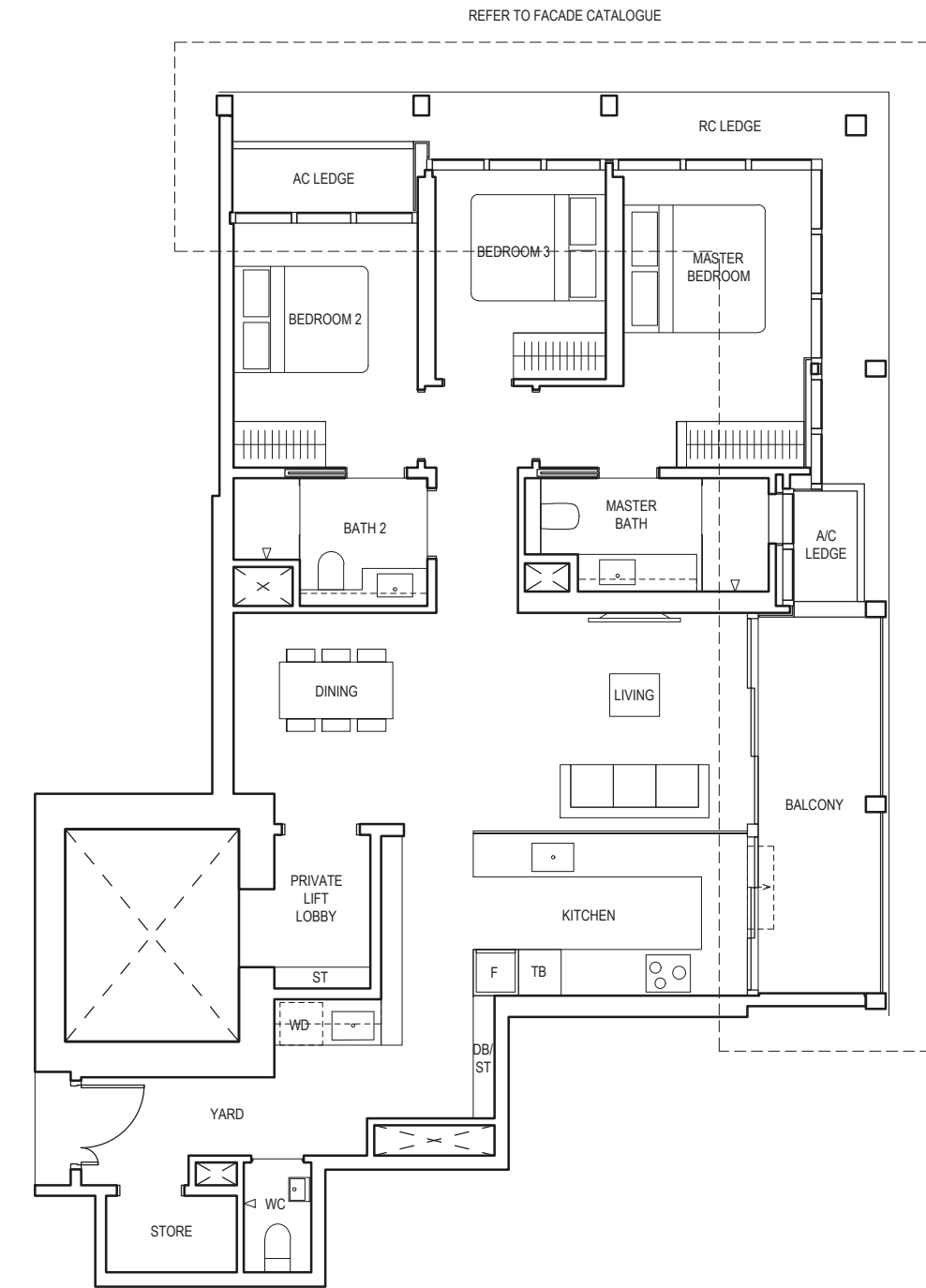
Area includes air-con (a/c) ledge, balcony and void where applicable. Please refer to the keyplan for orientation. The plans are subjected to change as may be approved by relevant authorities. All floor plans are approximate measurements only and are subjected to government re-survey. The balcony shall not be enclosed unless with the approved balcony screen. For an illustration of the approved balcony screen, please refer to the diagram annexed hereto as "Annexure A".

# 3-BEDROOM PREMIUM

## TYPE CP1

122 sq m / 1313 sq ft

BLK 5  
#04-23 to #23-23



**LEGEND (WHERE APPLICABLE)**  
 DB Distribution Board    WD Washer cum Dryer    W/D Washer and Dryer    F Fridge    DW Dishwasher    WIW Walk-In Wardrobe  
 WC Water Closet    ST Storage    HS Household Shelter    TB Tallboy    CH Wine Chiller

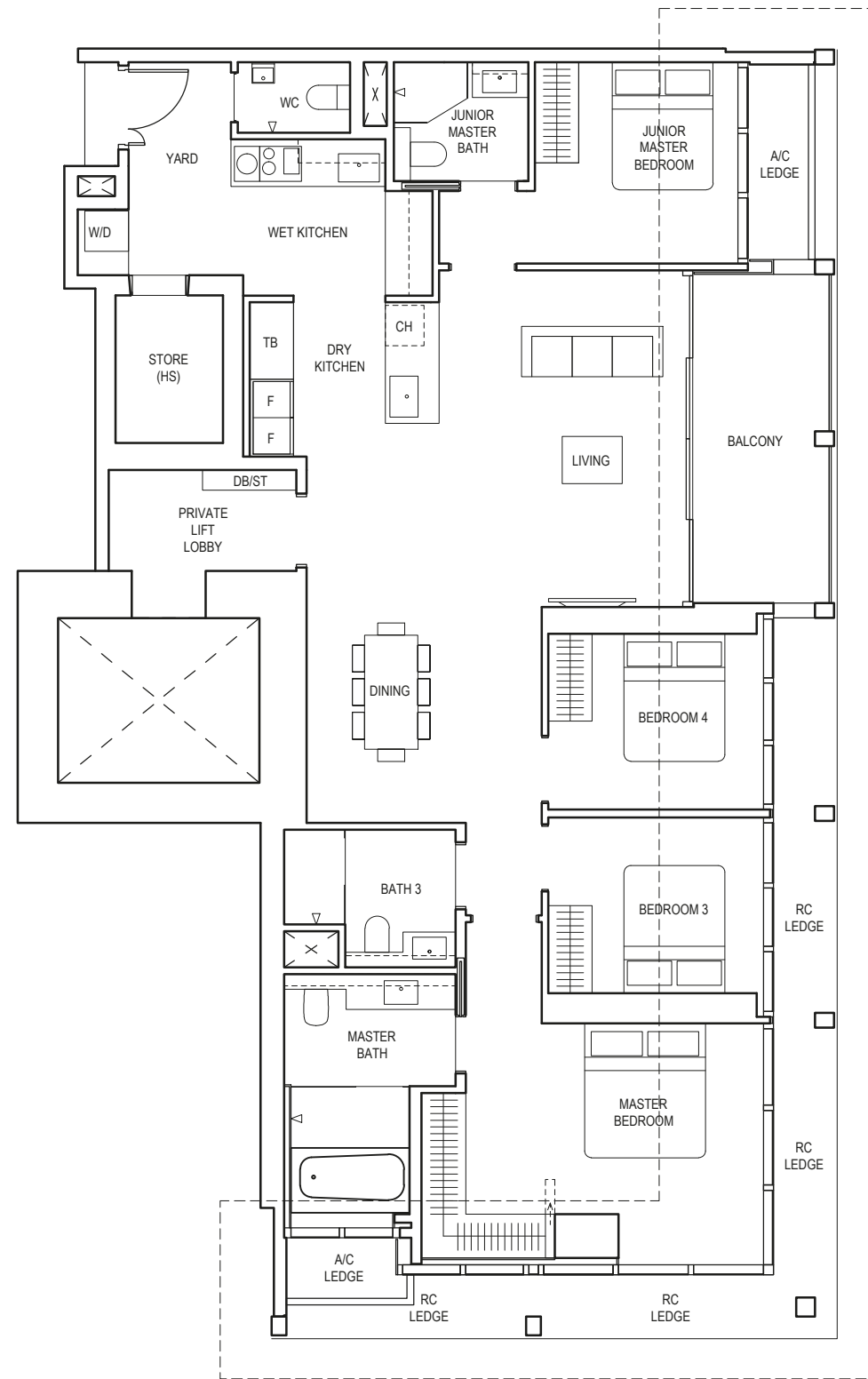
Area includes air-con (a/c) ledge, balcony and void where applicable. Please refer to the keyplan for orientation. The plans are subjected to change as may be approved by relevant authorities. All floor plans are approximate measurements only and are subjected to government re-survey. The balcony shall not be enclosed unless with the approved balcony screen. For an illustration of the approved balcony screen, please refer to the diagram annexed hereto as "Annexure A".

# 4-BEDROOM PREMIUM

## TYPE DP1

163 sq m / 1755 sq ft

BLK 1  
#25-10 to #44-10



REFER TO FACADE CATALOGUE



**LEGEND (WHERE APPLICABLE)**  
 DB Distribution Board    WD Washer cum Dryer    W/D Washer and Dryer    F Fridge    DW Dishwasher    WIW Walk-In Wardrobe  
 WC Water Closet    ST Storage    HS Household Shelter    TB Tallboy    CH Wine Chiller

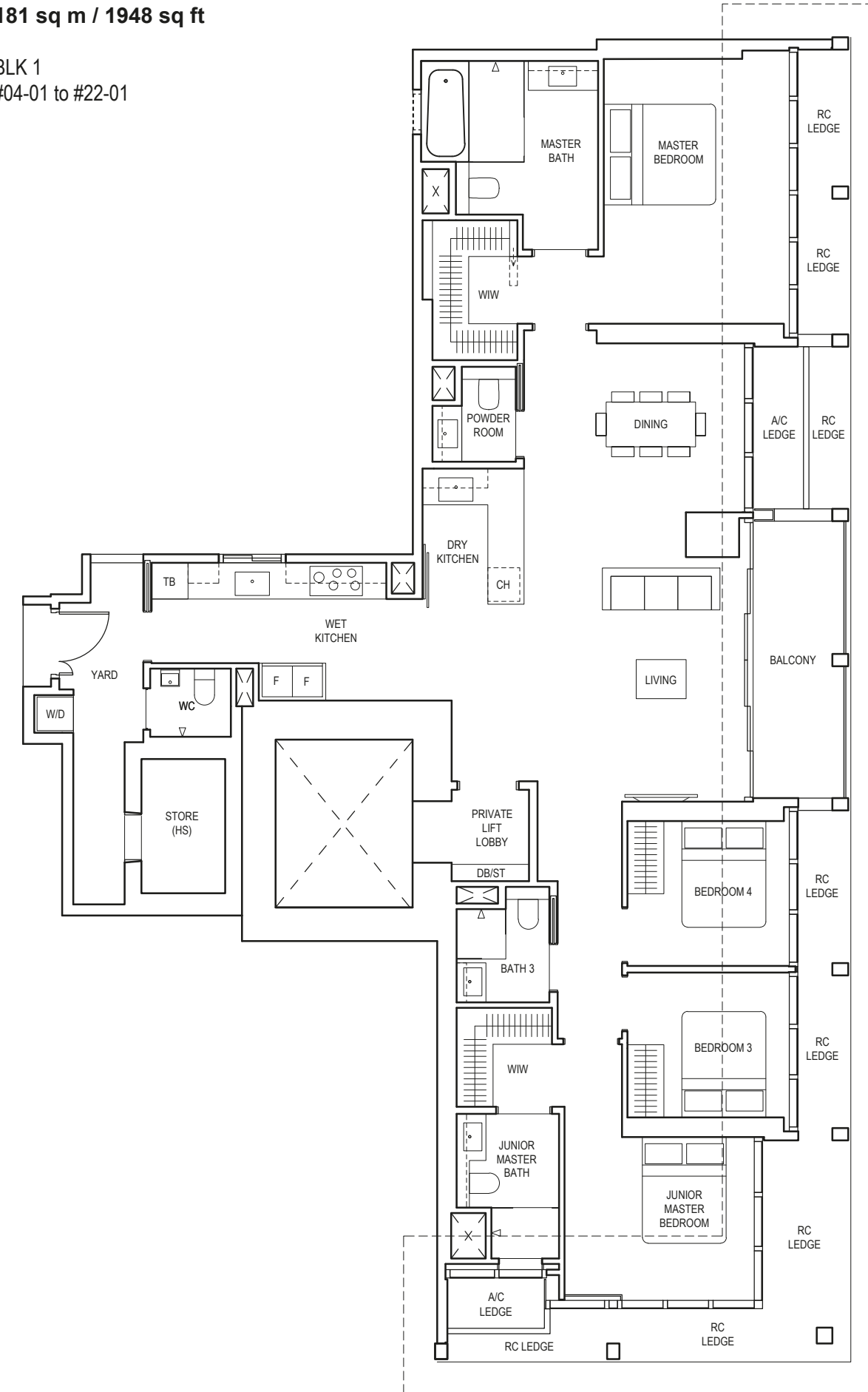
Area includes air-con (a/c) ledge, balcony and void where applicable. Please refer to the keyplan for orientation. The plans are subjected to change as may be approved by relevant authorities. All floor plans are approximate measurements only and are subjected to government re-survey. The balcony shall not be enclosed unless with the approved balcony screen. For an illustration of the approved balcony screen, please refer to the diagram annexed hereto as "Annexure A".

# 4-BEDROOM PREMIUM

## TYPE DP2

181 sq m / 1948 sq ft

BLK 1  
#04-01 to #22-01



REFER TO FACADE CATALOGUE



**LEGEND (WHERE APPLICABLE)**  
 DB Distribution Board    WD Washer cum Dryer    W/D Washer and Dryer    F Fridge    DW Dishwasher    WIW Walk-In Wardrobe  
 WC Water Closet    ST Storage    HS Household Shelter    TB Tallboy    CH Wine Chiller

Area includes air-con (a/c) ledge, balcony and void where applicable. Please refer to the keyplan for orientation. The plans are subjected to change as may be approved by relevant authorities. All floor plans are approximate measurements only and are subjected to government re-survey. The balcony shall not be enclosed unless with the approved balcony screen. For an illustration of the approved balcony screen, please refer to the diagram annexed hereto as "Annexure A".

## TYPE DP2(p)

181 sq m / 1948 sq ft

BLK 1  
#23-01

# 4-BEDROOM PREMIUM

## TYPE DP3

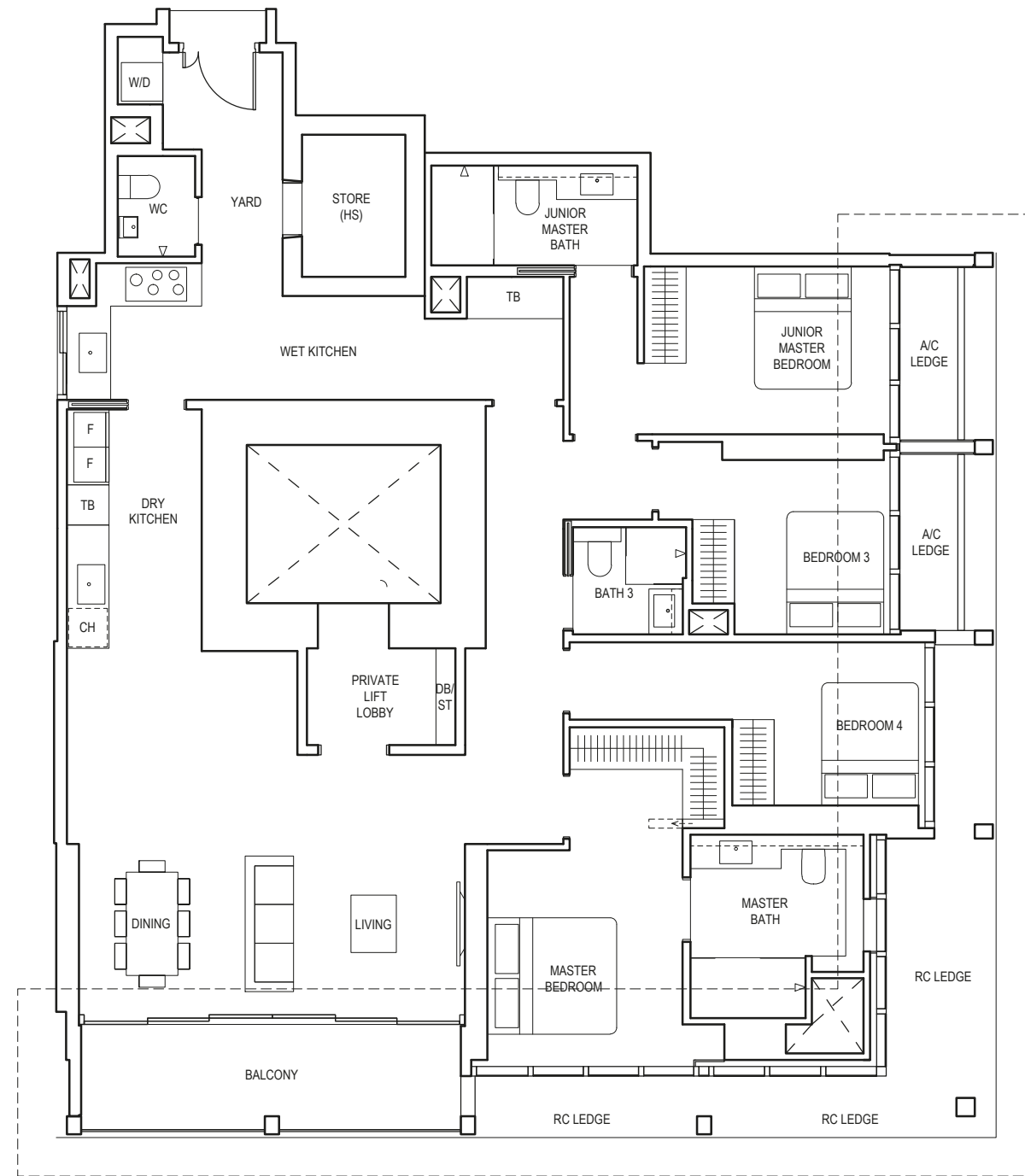
182 sq m / 1959 sq ft

BLK 1  
#04-11 to #22-11

## TYPE DP3(p)

182 sq m / 1959 sq ft

BLK 1  
#23-11



REFER TO FACADE CATALOGUE

BASK IN THE  
SPACIOUSNESS  
OF A RARE CITY  
HOME



**LEGEND (WHERE APPLICABLE)**  
 DB Distribution Board    WD Washer cum Dryer    W/D Washer and Dryer    F Fridge    DW Dishwasher    WIW Walk-In Wardrobe  
 WC Water Closet    ST Storage    HS Household Shelter    TB Tallboy    CH Wine Chiller

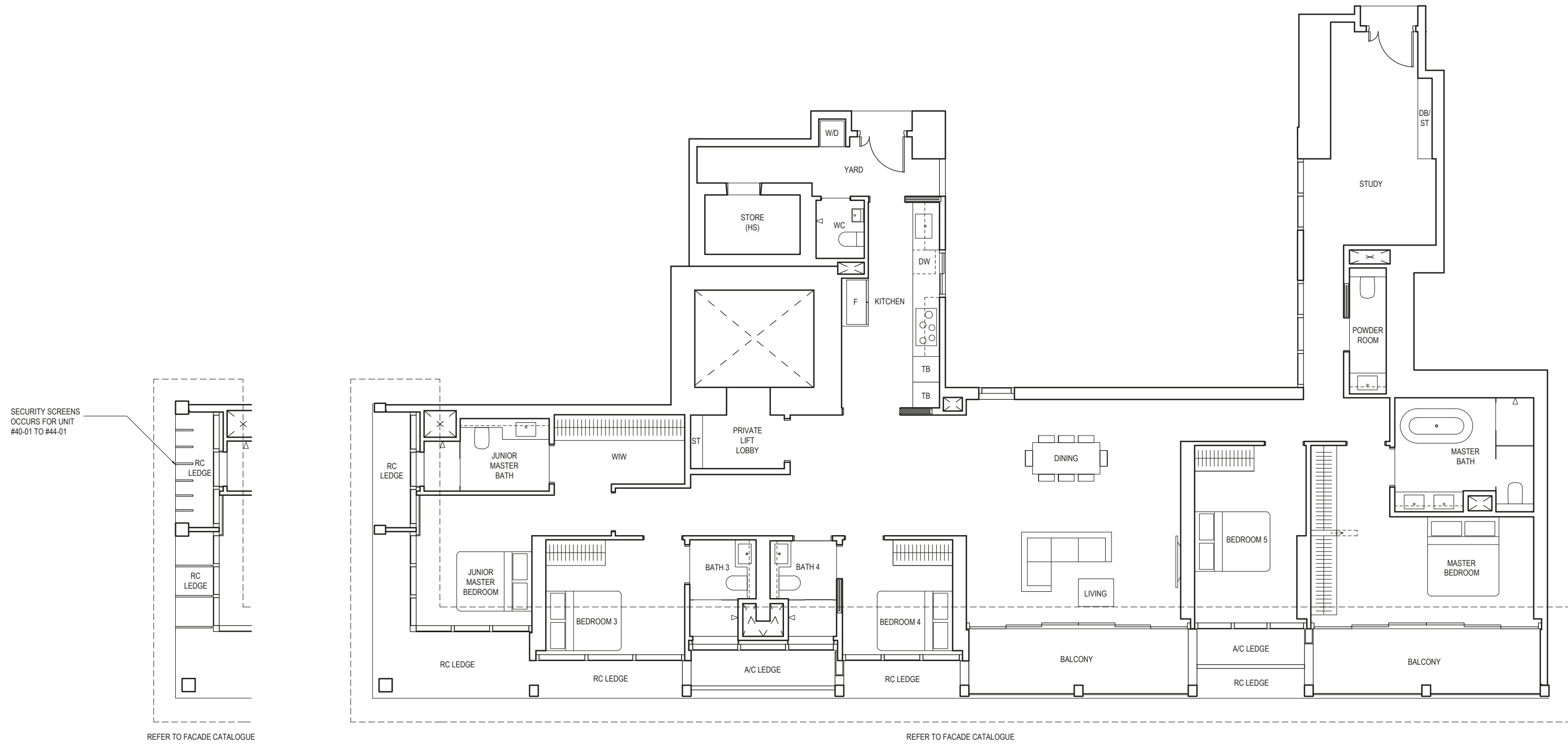
Area includes air-con (a/c) ledge, balcony and void where applicable. Please refer to the keyplan for orientation. The plans are subjected to change as may be approved by relevant authorities. All floor plans are approximate measurements only and are subjected to government re-survey. The balcony shall not be enclosed unless with the approved balcony screen. For an illustration of the approved balcony screen, please refer to the diagram annexed hereto as "Annexure A".

# 5-BEDROOM PREMIUM

## TYPE EP1

259 sq m / 2788 sq ft

BLK 1  
#25-01 to #44-01



**LEGEND (WHERE APPLICABLE)**  
 DB Distribution Board    WD Washer cum Dryer    W/D Washer and Dryer    F Fridge    DW Dishwasher    WIW Walk-In Wardrobe  
 WC Water Closet    ST Storage    HS Household Shelter    TB Tallboy    CH Wine Chiller

Area includes air-con (a/c) ledge, balcony and void where applicable. Please refer to the keyplan for orientation. The plans are subjected to change as may be approved by relevant authorities. All floor plans are approximate measurements only and are subjected to government re-survey. The balcony shall not be enclosed unless with the approved balcony screen. For an illustration of the approved balcony screen, please refer to the diagram annexed hereto as "Annexure A".