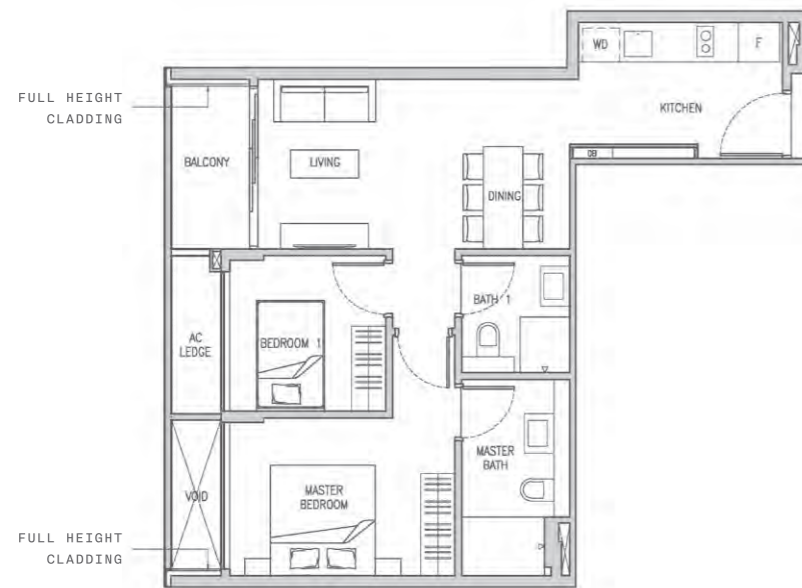


2 - BED ROOM

TYPE B

73 sqm / 786 sqft

- #02 - 06
- #03 - 06
- #04 - 06
- #05 - 06



F FRIDGE
 WD WASHER DRYER
 DB DISTRIBUTION BOX
 ST STORAGE



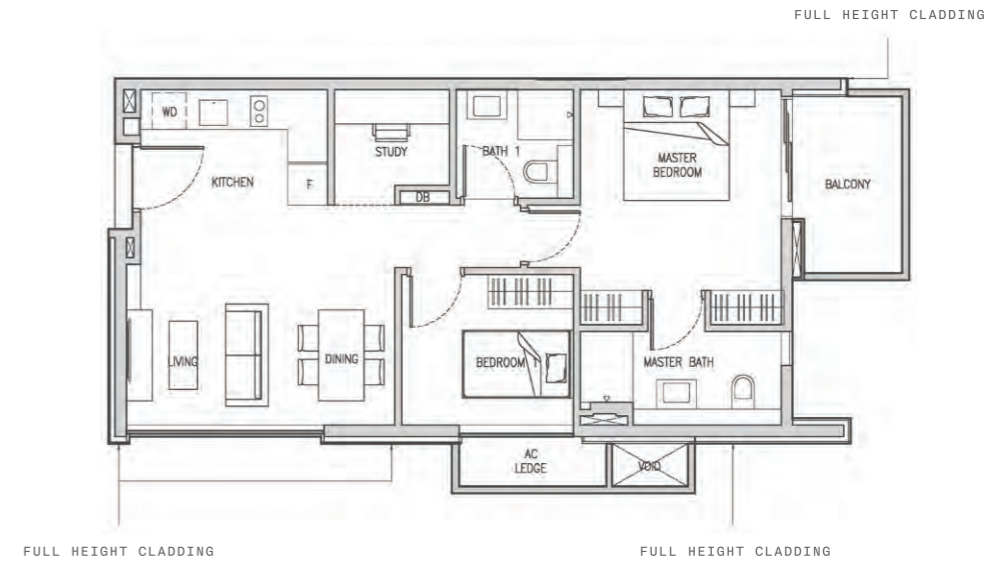
Area includes air conditioner (AC) ledge, balcony, roof terrace and strata void where applicable. The above plans are subject to change as may be approved by the relevant authorities. All floor plans are approximate measurements only and are subject to government re-survey. The balcony shall not be enclosed unless with approved balcony screen. The installation and cost of the screen shall be borne by the purchaser.

2 - BED ROOM + 1

TYPE B1

81 sqm / 872 sqft

- #02-04
- #03-04
- #04-04



F FRIDGE
 WD WASHER DRYER
 DB DISTRIBUTION BOX
 ST STORAGE



Area includes air conditioner (AC) ledge, balcony, roof terrace and strata void where applicable. The above plans are subject to change as may be approved by the relevant authorities. All floor plans are approximate measurements only and are subject to government re-survey. The balcony shall not be enclosed unless with approved balcony screen. The installation and cost of the screen shall be borne by the purchaser.

2 - BEDROOM + 1

TYPE B2

85 sqm / 915 sqft

#02 - 05

#03 - 05

#04 - 05

#05 - 05



F FRIDGE
WD WASHER DRYER
DB DISTRIBUTION BOX
ST STORAGE



Area includes air conditioner (AC) ledge, balcony, roof terrace and strata void where applicable. The above plans are subject to change as may be approved by the relevant authorities. All floor plans are approximate measurements only and are subject to government re-survey. The balcony shall not be enclosed unless with approved balcony screen. The installation and cost of the screen shall be borne by the purchaser.

3 - BEDROOM

TYPE C

100 sqm / 1076 sqft

#02 - 07

#03 - 07

#04 - 07

#05 - 07



F FRIDGE
WD WASHER DRYER
DB DISTRIBUTION BOX
ST STORAGE



Area includes air conditioner (AC) ledge, balcony, roof terrace and strata void where applicable. The above plans are subject to change as may be approved by the relevant authorities. All floor plans are approximate measurements only and are subject to government re-survey. The balcony shall not be enclosed unless with approved balcony screen. The installation and cost of the screen shall be borne by the purchaser.

3 - BEDROOM + 1

TYPE C1

112 sqm / 1206 sqft

#02 - 01

#03 - 01

#04 - 01



F FRIDGE
WD WASHER DRYER
DB DISTRIBUTION BOX
ST STORAGE



Area includes air conditioner (AC) ledge, balcony, roof terrace and strata void where applicable. The above plans are subject to change as may be approved by the relevant authorities. All floor plans are approximate measurements only and are subject to government re-survey. The balcony shall not be enclosed unless with approved balcony screen. The installation and cost of the screen shall be borne by the purchaser.

3 - BEDROOM + 1 (PREMIUM)

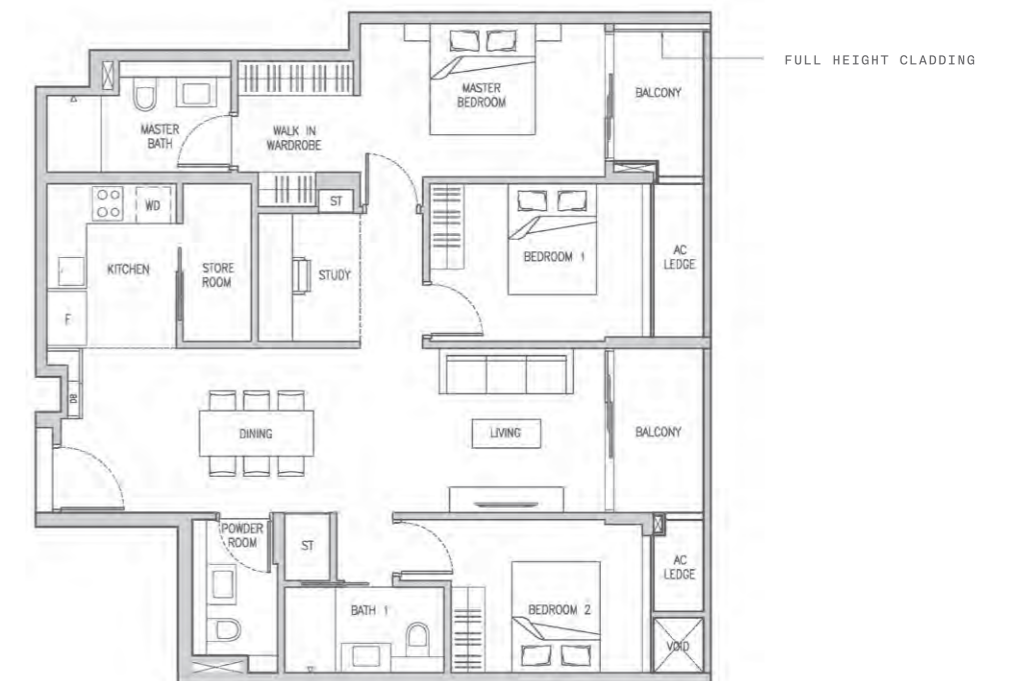
TYPE C2

122 sqm / 1313 sqft

#02 - 02

#03 - 02

#04 - 02



F FRIDGE
WD WASHER DRYER
DB DISTRIBUTION BOX
ST STORAGE



Area includes air conditioner (AC) ledge, balcony, roof terrace and strata void where applicable. The above plans are subject to change as may be approved by the relevant authorities. All floor plans are approximate measurements only and are subject to government re-survey. The balcony shall not be enclosed unless with approved balcony screen. The installation and cost of the screen shall be borne by the purchaser.

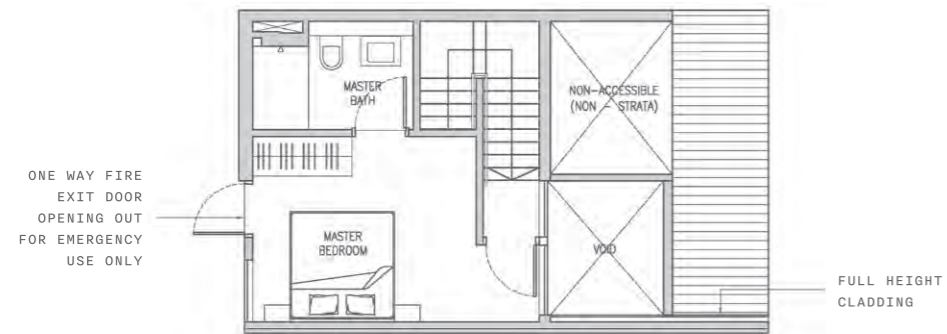
2 - BEDROOM PENTHOUSE

TYPE B3(PH)
91 sqm / 980 sqft

#05-03



LOWER LEVEL



UPPER LEVEL

F FRIDGE
WD WASHER DRYER
DB DISTRIBUTION BOX
ST STORAGE

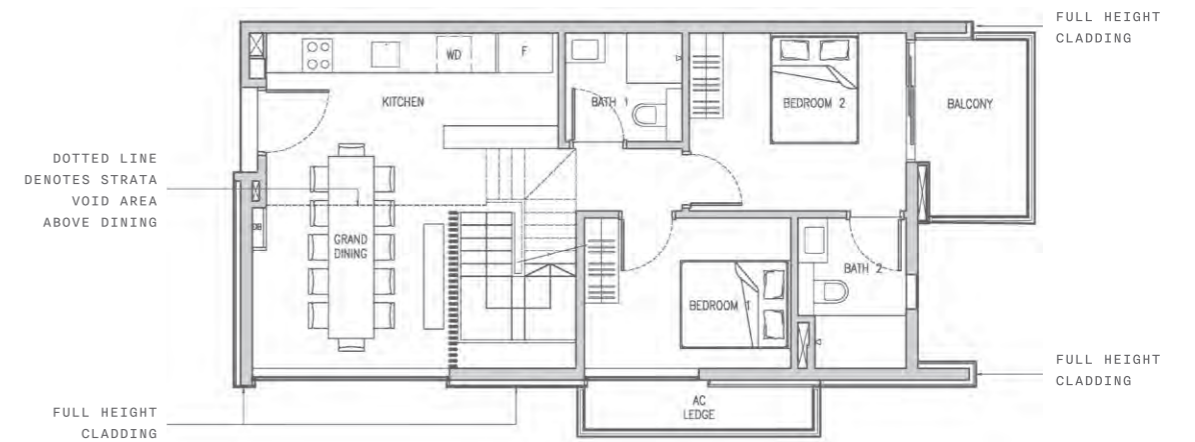


Area includes air conditioner (AC) ledge, balcony, roof terrace and strata void where applicable. The above plans are subject to change as may be approved by the relevant authorities. All floor plans are approximate measurements only and are subject to government re-survey. The balcony shall not be enclosed unless with approved balcony screen. The installation and cost of the screen shall be borne by the purchaser.

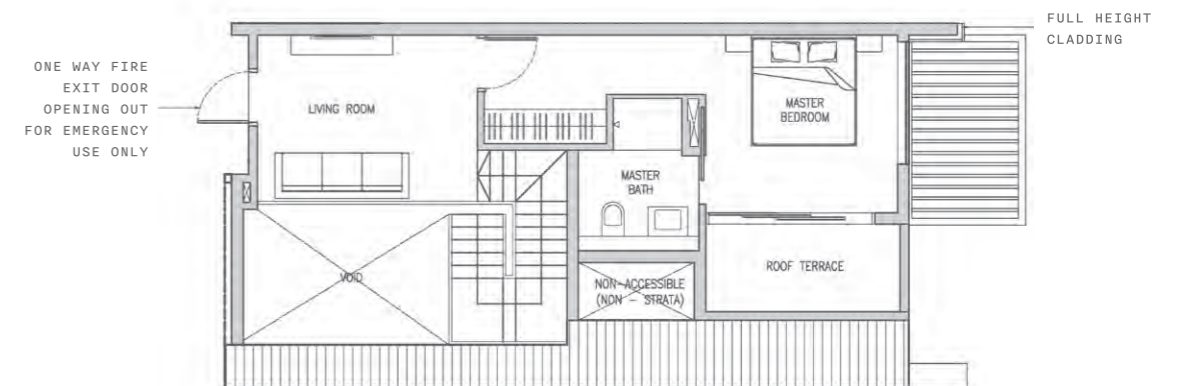
3 - BEDROOM (PREMIUM) PENTHOUSE

TYPE C3(PH)
137 sqm / 1475 sqft

#05-04

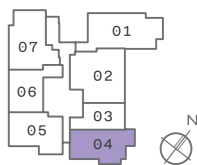


LOWER LEVEL



UPPER LEVEL

F FRIDGE
WD WASHER DRYER
DB DISTRIBUTION BOX
ST STORAGE

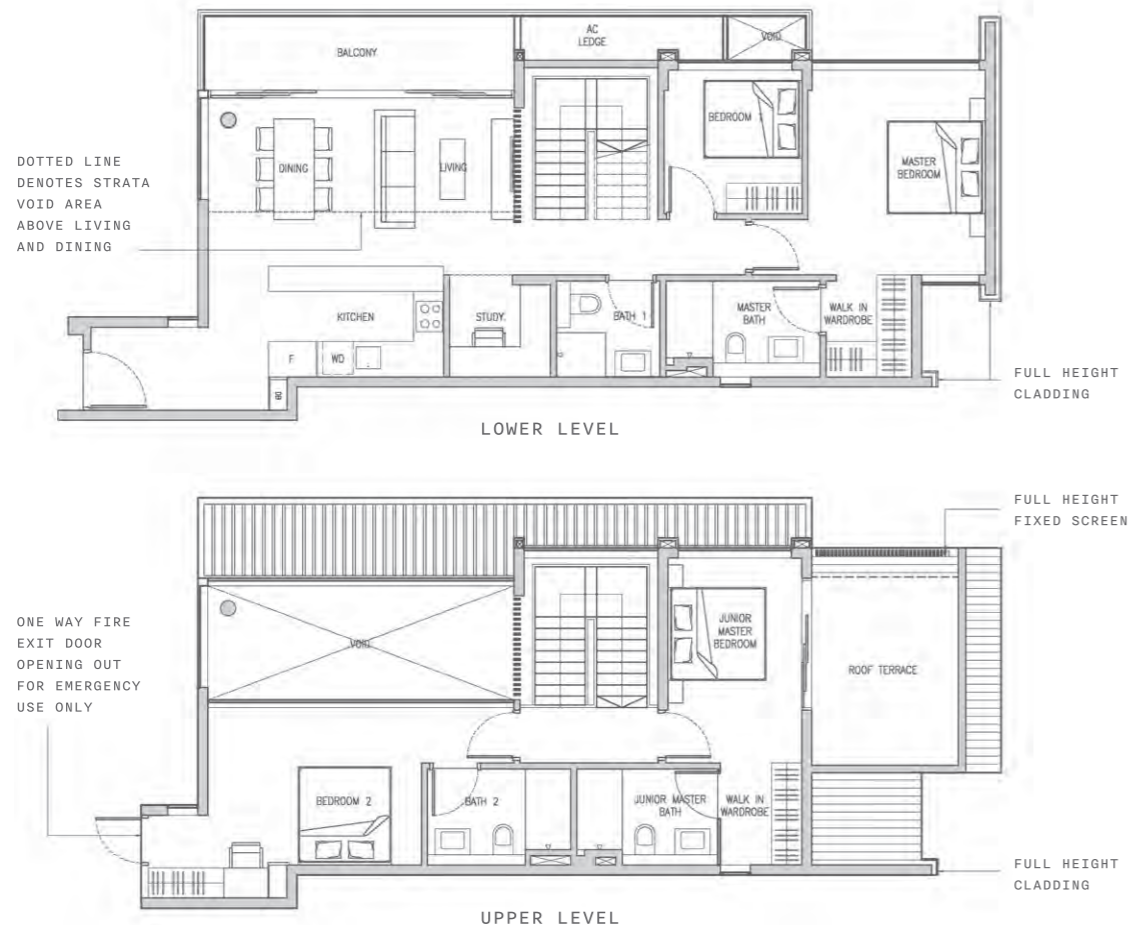


Area includes air conditioner (AC) ledge, balcony, roof terrace and strata void where applicable. The above plans are subject to change as may be approved by the relevant authorities. All floor plans are approximate measurements only and are subject to government re-survey. The balcony shall not be enclosed unless with approved balcony screen. The installation and cost of the screen shall be borne by the purchaser.

4 - BEDROOM + 1 PENTHOUSE

TYPE D(PH)
201 sqm / 2164 sqft

#05-01



F FRIDGE
WD WASHER DRYER
DB DISTRIBUTION BOX
ST STORAGE

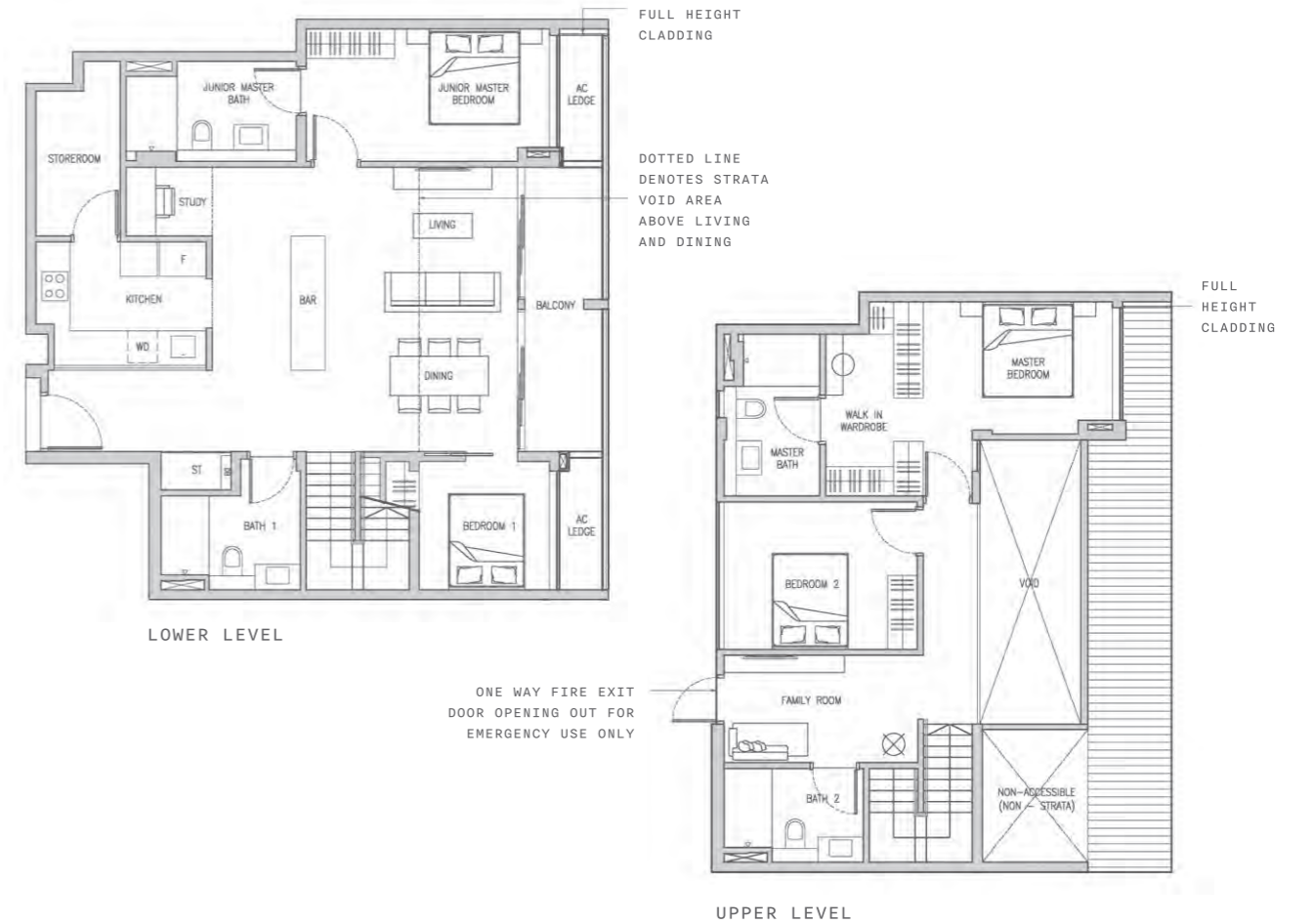


Area includes air conditioner (AC) ledge, balcony, roof terrace and strata void where applicable. The above plans are subject to change as may be approved by the relevant authorities. All floor plans are approximate measurements only and are subject to government re-survey. The balcony shall not be enclosed unless with approved balcony screen. The installation and cost of the screen shall be borne by the purchaser.

4 - BEDROOM (PREMIUM) PENTHOUSE

TYPE D1(PH)
203 sqm / 2185 sqft

#05-02



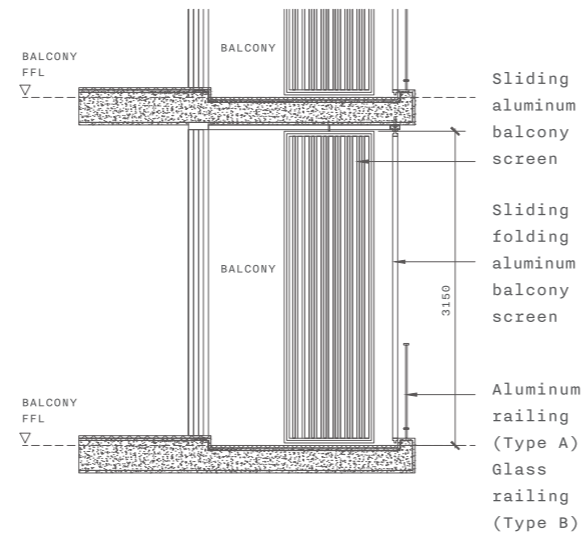
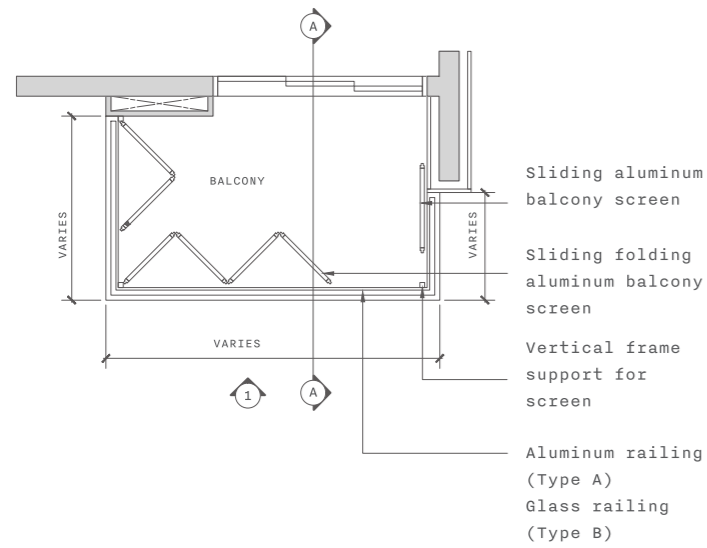
F FRIDGE
WD WASHER DRYER
DB DISTRIBUTION BOX
ST STORAGE



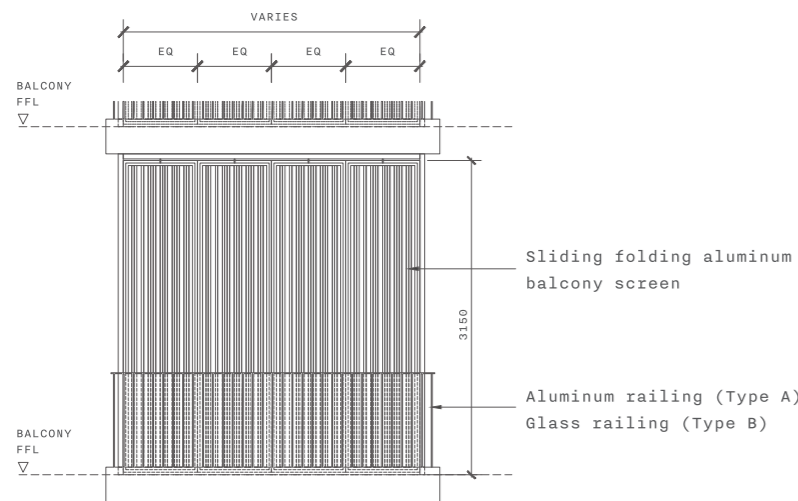
Area includes air conditioner (AC) ledge, balcony, roof terrace and strata void where applicable. The above plans are subject to change as may be approved by the relevant authorities. All floor plans are approximate measurements only and are subject to government re-survey. The balcony shall not be enclosed unless with approved balcony screen. The installation and cost of the screen shall be borne by the purchaser.

APPROVED SCREEN FOR BALCONY

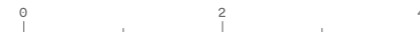
**TYPICAL BALCONY SCREEN
- PLAN**



**TYPICAL BALCONY SCREEN
- SECTION A - A**



**TYPICAL BALCONY SCREEN
- ELEVATION 1**



- NOTES:
1. The balcony shall not be enclosed unless with the approved screen as shown above ("approved screen");
 2. Balcony screen is not provided, the cost of screen and installation of the approved screen shall be borne by the purchaser; and
 3. On-site verification is necessary to obtain actual measurement prior to fabrication and installation of the approved screen.

EQ - Equidistant

HONG HOW GROUP



Real Estate Developer,
Investor & Development Manager

Hong How Group is a Singapore-based estate developer and investor with over 40 years of experience. Our wide experience includes commercial, residential, mixed and industrial developments. We seek transformative projects with special interest in and deep knowledge of shophouse conservation. Hong How Group has won several industry awards in conservation, built quality and greenery.

Our reputation for delivering consistently high quality development of enduring value is sustained by hands-on involvement in the entire development process. We manage all properties held for long term investments to ensure proper upkeep and pre-emptive maintenance. Our Group's past developments include Lighthouse, Quartet on Ford, 15 Little Road and URA Architectural Heritage (AHA) award-winning 36 & 38 Armenian Street and recently, 292 Joo Chiat Road.



URA AHA 2022

Co-Working offices at 292 Joo Chiat Road in a restored 4-storey 1950s art décor commercial street block near Dunman Road junction.



URA AHA 2010

Off-street shops & SOHO offices at 36 & 38 Armenian Street within a transformed corner cluster of 1930s & 1940s art décor commercial.



Lighthouse

51-unit resort style Lighthouse condominium within short walk to Pasir Ris beach.