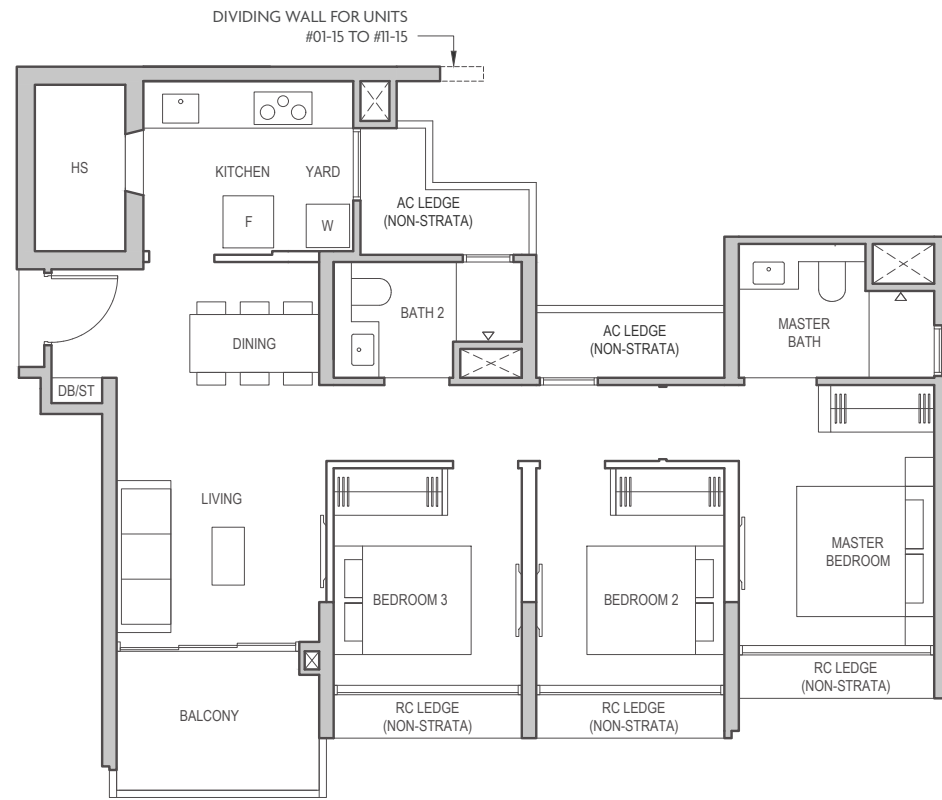


3-BEDROOM DELUXE

Type Cl<sub>a</sub>  
81 sqm (872 sq ft)

Block 8 #02-15 to #11-15

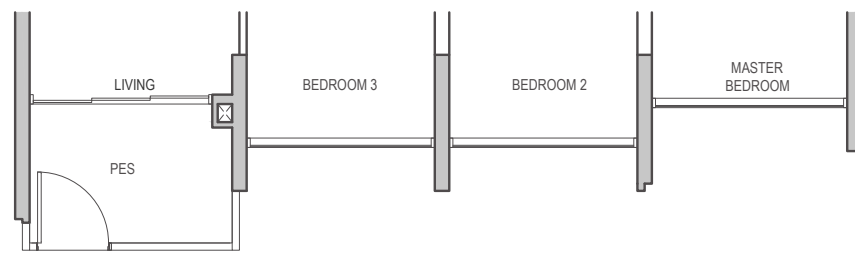
\*Mirrored Units  
Block 6 #02-12\* to #11-12\*



Type Cl<sub>a</sub> (p)  
81 sqm (872 sq ft)

Block 8 #01-15

\*Mirrored Units  
Block 6 #01-12\*

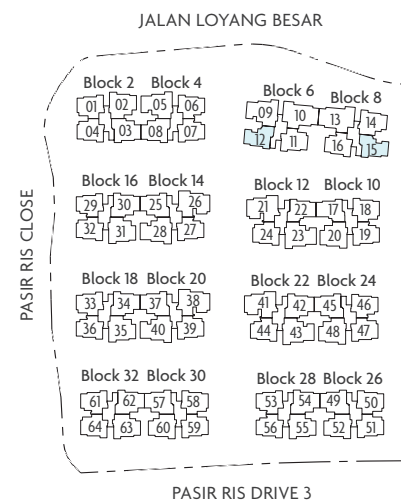


- PES - Private Enclosed Space
- WC - Water Closet
- F - Fridge (not included)
- W - Washer (not included)
- DB/ST - Distribution Board/Storage
- HS - Household Shelter
- RC - Reinforced Concrete
- AC - Air-Conditioner
- - Wall not allowed to be hacked or altered



Key plan is not drawn to scale

Area includes balcony or private enclosed space (PES), where applicable. All AC ledges and RC ledges (non-load bearing) are excluded from strata area. The above plans and illustrations are subject to change as may be required or approved by the relevant authorities. All areas and measurements stated herein as approximate and subject to final survey.

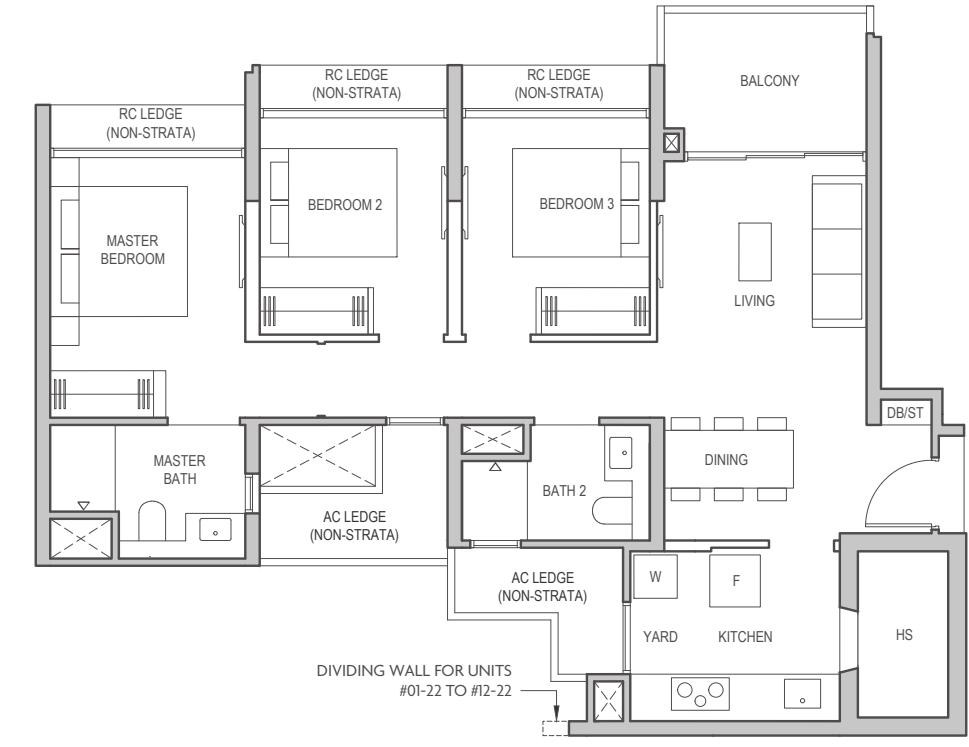


3-BEDROOM DELUXE

Type Cl<sub>b</sub>  
81 sqm (872 sq ft)

Block 10 #02-17 to #12-17

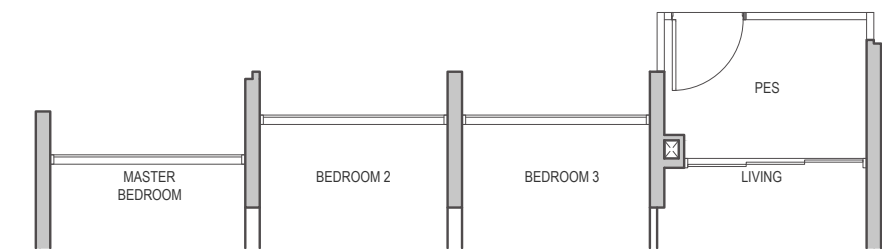
\*Mirrored Units  
Block 12 #02-22\* to #12-22\*



Type Cl<sub>b</sub> (p)  
81 sqm (872 sq ft)

Block 10 #01-17

\*Mirrored Units  
Block 12 #01-22\*

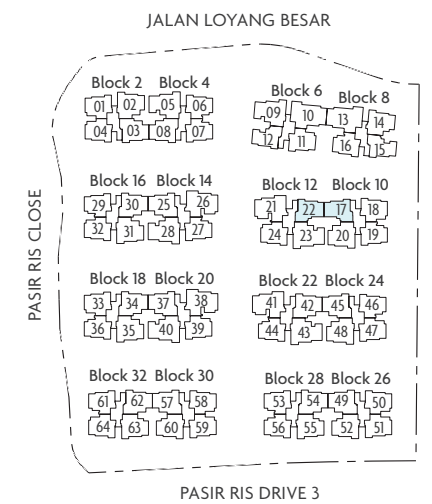


- PES - Private Enclosed Space
- WC - Water Closet
- F - Fridge (not included)
- W - Washer (not included)
- DB/ST - Distribution Board/Storage
- HS - Household Shelter
- RC - Reinforced Concrete
- AC - Air-Conditioner
- - Wall not allowed to be hacked or altered



Key plan is not drawn to scale

Area includes balcony or private enclosed space (PES), where applicable. All AC ledges and RC ledges (non-load bearing) are excluded from strata area. The above plans and illustrations are subject to change as may be required or approved by the relevant authorities. All areas and measurements stated herein as approximate and subject to final survey.



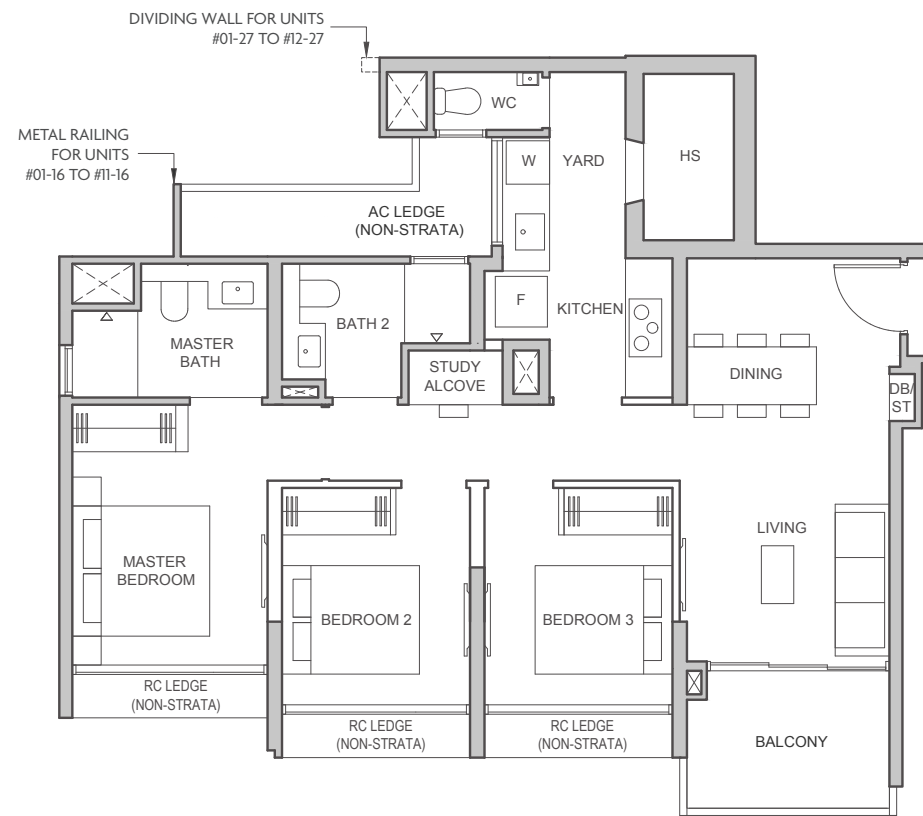
### 3-BEDROOM PREMIUM

#### Type C2 85 sqm (915 sq ft)

- Block 4 #03-06 to #11-06
- Block 8 #02-16 to #11-16
- Block 18 #02-36 to #12-36
- Block 22 #02-44 to #12-44
- Block 24 #02-46 to #12-46
- Block 28 #02-56 to #12-56

\*Mirrored Units

- Block 4 #02-07\* to #11-07\*
- Block 10 #02-19\* to #12-19\*
- Block 14 #02-27\* to #12-27\*
- Block 16 #02-29\* to #12-29\*
- Block 28 #02-53\* to #12-53\*
- Block 32 #02-61\* to #12-61\*

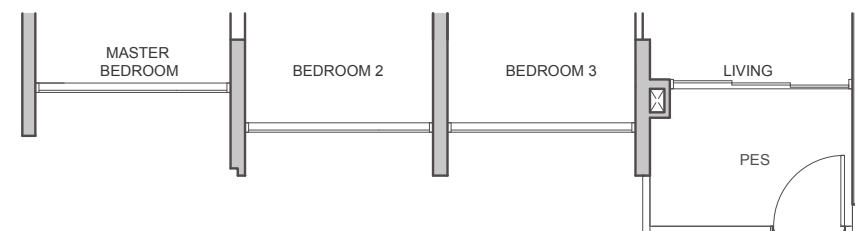


#### Type C2 (p) 85 sqm (915 sq ft)

- Block 8 #01-16
- Block 18 #01-36
- Block 22 #01-44
- Block 24 #01-46
- Block 28 #01-56

\*Mirrored Units

- Block 4 #01-07\*
- Block 10 #01-19\*
- Block 14 #01-27\*
- Block 16 #01-29\*
- Block 28 #01-53\*
- Block 32 #01-61\*

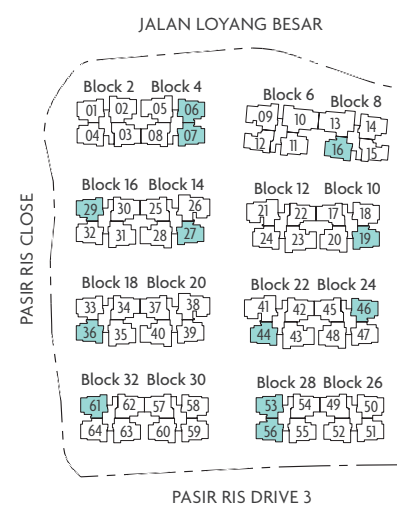


- PES - Private Enclosed Space
- WC - Water Closet
- F - Fridge (not included)
- W - Washer (not included)
- DB/ST - Distribution Board/Storage
- HS - Household Shelter
- RC - Reinforced Concrete
- AC - Air-Conditioner
- - Wall not allowed to be hacked or altered



Key plan is not drawn to scale

Area includes balcony or private enclosed space (PES), where applicable. All AC ledges and RC ledges (non-load bearing) are excluded from strata area. The above plans and illustrations are subject to change as may be required or approved by the relevant authorities. All areas and measurements stated herein as approximate and subject to final survey.



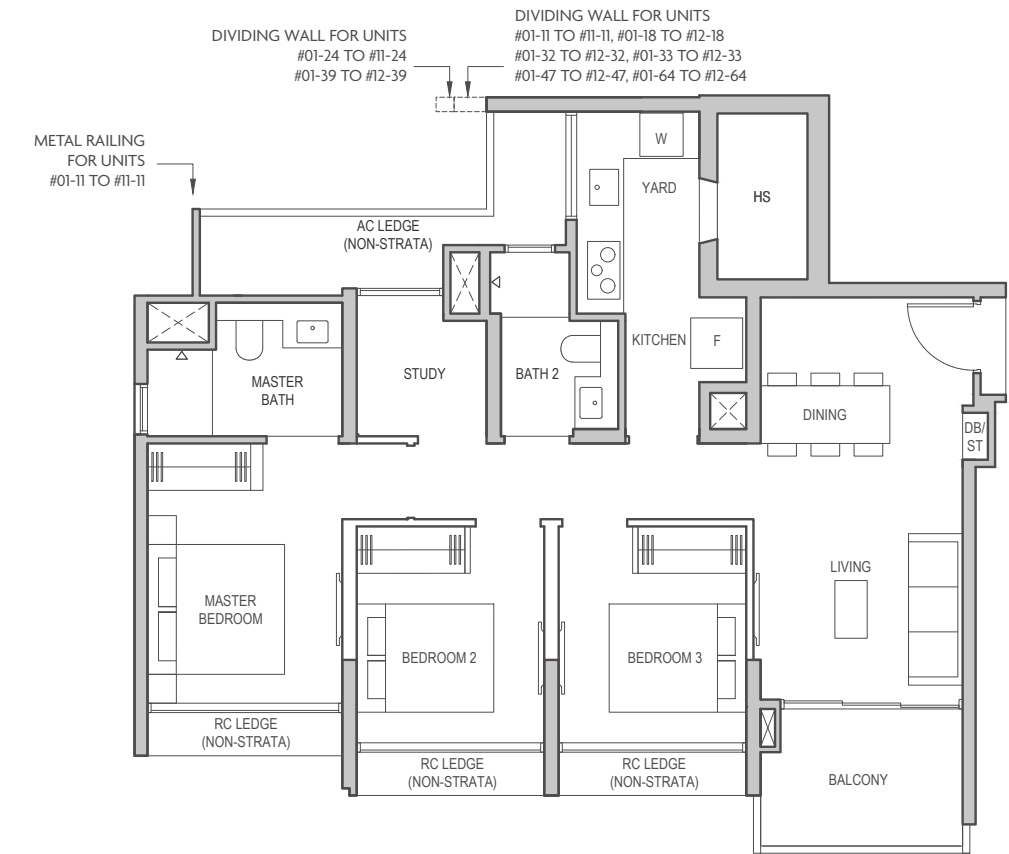
### 3-BEDROOM PREMIUM + STUDY

#### Type C3 85 sqm (915 sq ft)

- Block 2 #02-04 to #11-04
- Block 10 #02-18 to #12-18
- Block 12 #02-24 to #12-24
- Block 16 #02-32 to #12-32
- Block 26 #02-50 to #12-50
- Block 30 #02-58 to #12-58
- Block 32 #02-64 to #12-64

\*Mirrored Units

- Block 2 #02-01\* to #11-01\*
- Block 6 #02-11\* to #11-11\*
- Block 18 #02-33\* to #12-33\*
- Block 20 #02-39\* to #12-39\*
- Block 24 #02-47\* to #12-47\*
- Block 26 #02-51\* to #12-51\*
- Block 30 #02-59\* to #12-59\*

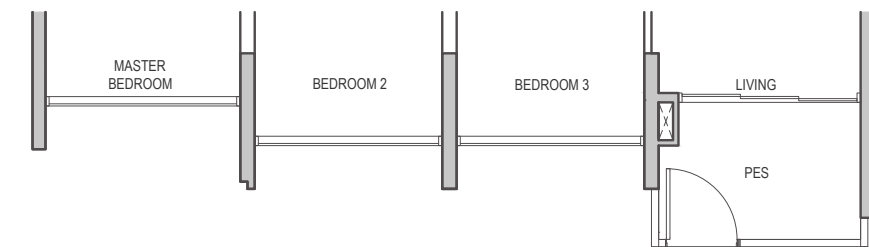


#### Type C3 (p) 85 sqm (915 sq ft)

- Block 2 #01-04
- Block 10 #01-18
- Block 12 #01-24
- Block 16 #01-32
- Block 26 #01-50
- Block 30 #01-58
- Block 32 #01-64

\*Mirrored Units

- Block 2 #01-01\*
- Block 6 #01-11\*
- Block 18 #01-33\*
- Block 20 #01-39\*
- Block 24 #01-47\*
- Block 26 #01-51\*
- Block 30 #01-59\*

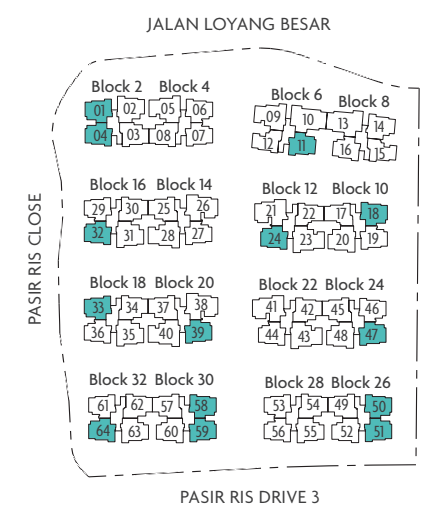


- PES - Private Enclosed Space
- WC - Water Closet
- F - Fridge (not included)
- W - Washer (not included)
- DB/ST - Distribution Board/Storage
- HS - Household Shelter
- RC - Reinforced Concrete
- AC - Air-Conditioner
- - Wall not allowed to be hacked or altered



Key plan is not drawn to scale

Area includes balcony or private enclosed space (PES), where applicable. All AC ledges and RC ledges (non-load bearing) are excluded from strata area. The above plans and illustrations are subject to change as may be required or approved by the relevant authorities. All areas and measurements stated herein as approximate and subject to final survey.

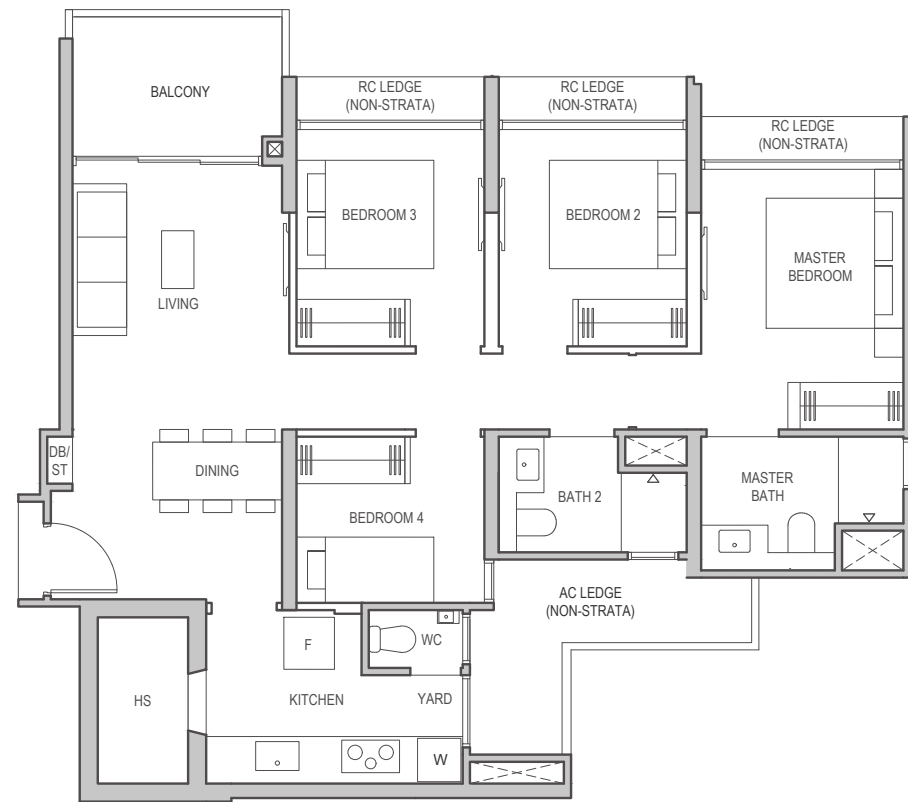


## 4-BEDROOM CLASSIC

### Type D1 92 sqm (990 sq ft)

Block 8 #02-14 to #11-14  
Block 26 #02-52 to #12-52  
Block 30 #02-60 to #12-60

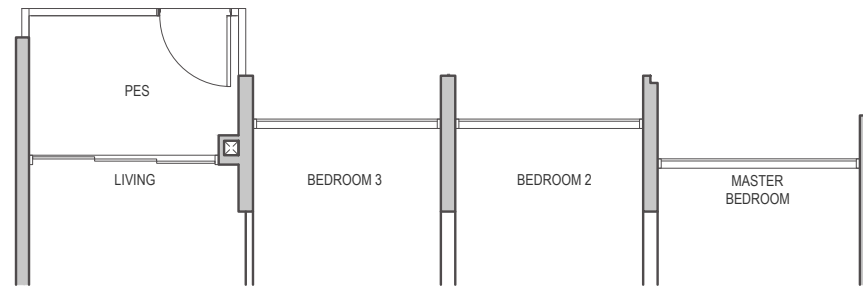
\*Mirrored Units  
Block 28 #02-55\* to #12-55\*  
Block 32 #02-63\* to #12-63\*



### Type D1 (p) 92 sqm (990 sq ft)

Block 8 #01-14  
Block 26 #01-52  
Block 30 #01-60

\*Mirrored Units  
Block 28 #01-55\*  
Block 32 #01-63\*

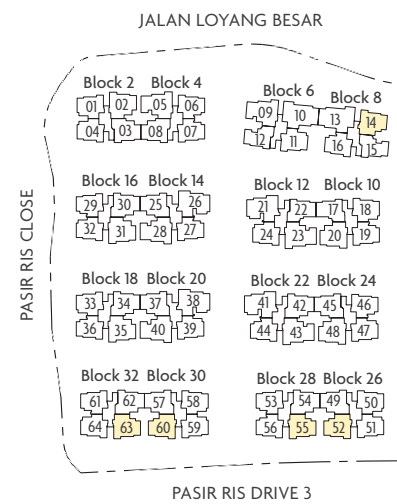


PES - Private Enclosed Space  
WC - Water Closet  
F - Fridge (not included)  
W - Washer (not included)  
DB/ST - Distribution Board/Storage  
HS - Household Shelter  
RC - Reinforced Concrete  
AC - Air-Conditioner  
■ - Wall not allowed to be hacked or altered



Key plan is not drawn to scale

Area includes balcony or private enclosed space (PES), where applicable. All AC ledges and RC ledges (non-load bearing) are excluded from strata area. The above plans and illustrations are subject to change as may be required or approved by the relevant authorities. All areas and measurements stated herein as approximate and subject to final survey.

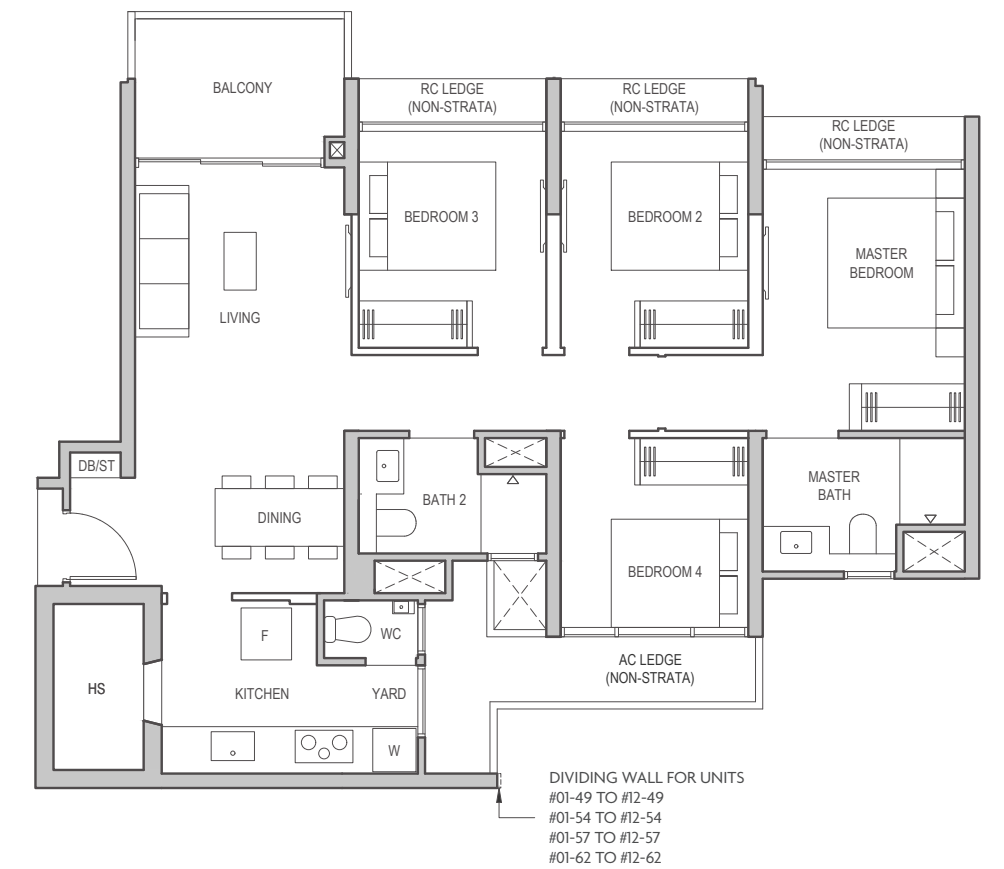


## 4-BEDROOM DELUXE

### Type D2 94 sqm (1012 sq ft)

Block 4 #02-08 to #11-08  
Block 16 #02-30 to #12-30  
Block 18 #02-34 to #12-34  
Block 22 #02-42 to #12-42  
Block 28 #02-54 to #12-54  
Block 32 #02-62 to #12-62

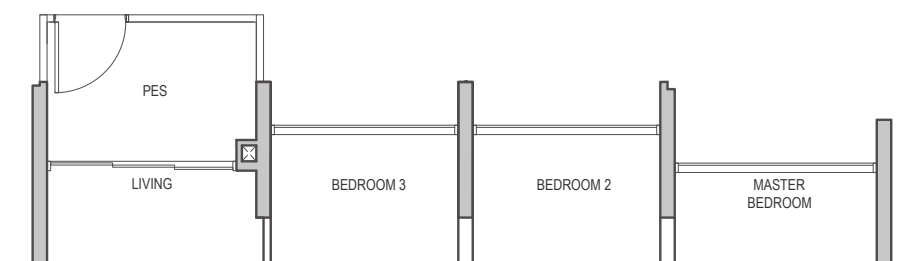
\*Mirrored Units  
Block 2 #02-03\* to #11-03\*  
Block 14 #02-25\* to #12-25\*  
Block 20 #02-37\* to #12-37\*  
Block 24 #02-45\* to #12-45\*  
Block 26 #02-49\* to #12-49\*  
Block 30 #02-57\* to #12-57\*



### Type D2 (p) 94 sqm (1012 sq ft)

Block 4 #01-08  
Block 16 #01-30  
Block 18 #01-34  
Block 22 #01-42  
Block 28 #01-54  
Block 32 #01-62

\*Mirrored Units  
Block 2 #01-03\*  
Block 14 #01-25\*  
Block 20 #01-37\*  
Block 24 #01-45\*  
Block 26 #01-49\*  
Block 30 #01-57\*

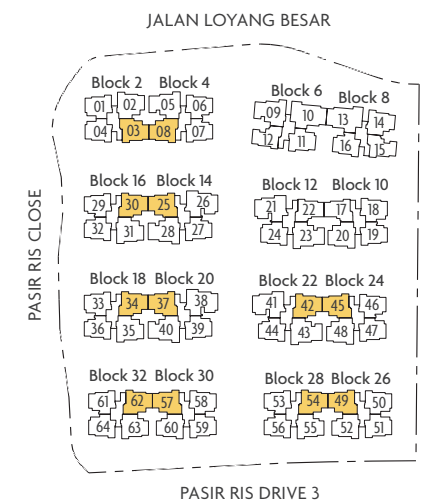


PES - Private Enclosed Space  
WC - Water Closet  
F - Fridge (not included)  
W - Washer (not included)  
DB/ST - Distribution Board/Storage  
HS - Household Shelter  
RC - Reinforced Concrete  
AC - Air-Conditioner  
■ - Wall not allowed to be hacked or altered



Key plan is not drawn to scale

Area includes balcony or private enclosed space (PES), where applicable. All AC ledges and RC ledges (non-load bearing) are excluded from strata area. The above plans and illustrations are subject to change as may be required or approved by the relevant authorities. All areas and measurements stated herein as approximate and subject to final survey.



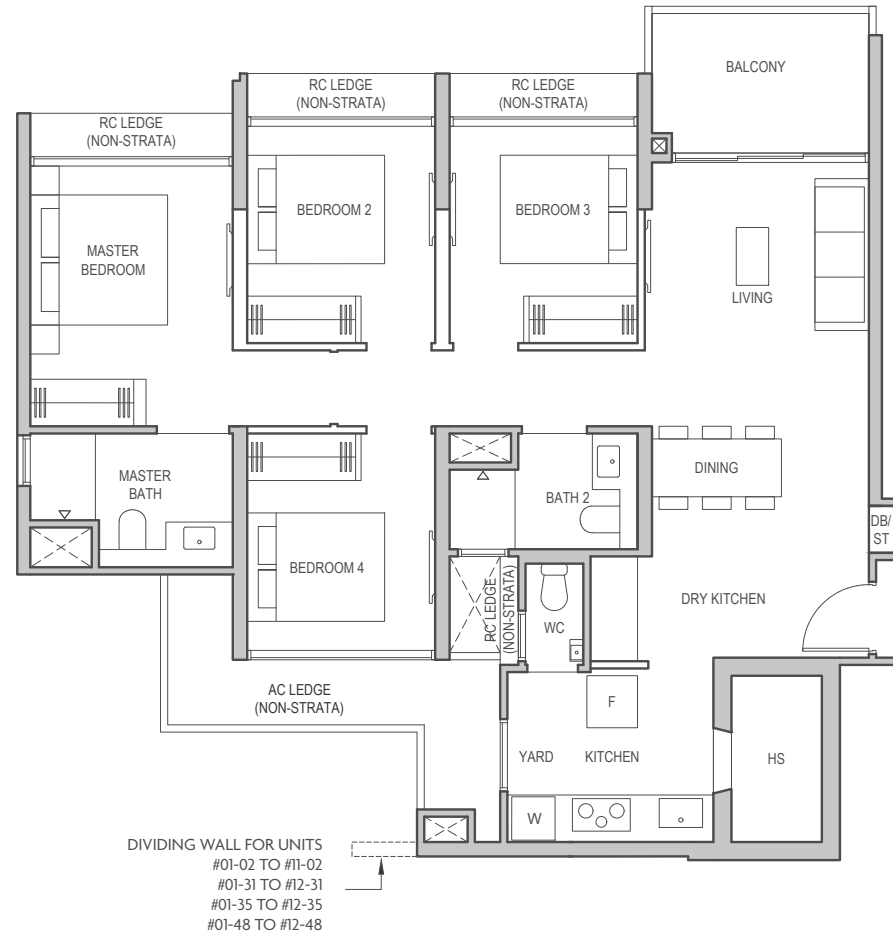
4-BEDROOM PREMIUM

Type D3  
98 sqm (1055 sq ft)

Block 16 #02-31 to #12-31  
Block 18 #02-35 to #12-35

\*Mirrored Units

Block 2 #02-02\* to #11-02\*  
Block 10 #02-20\* to #12-20\*  
Block 24 #02-48\* to #12-48\*

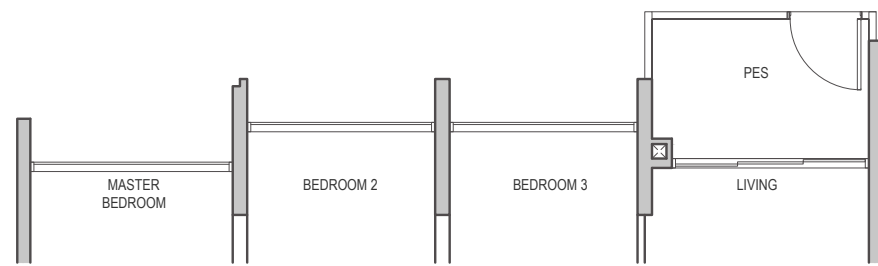


Type D3 (p)  
98 sqm (1055 sq ft)

Block 16 #01-31  
Block 18 #01-35

\*Mirrored Units

Block 2 #01-02\*  
Block 10 #01-20\*  
Block 24 #01-48\*

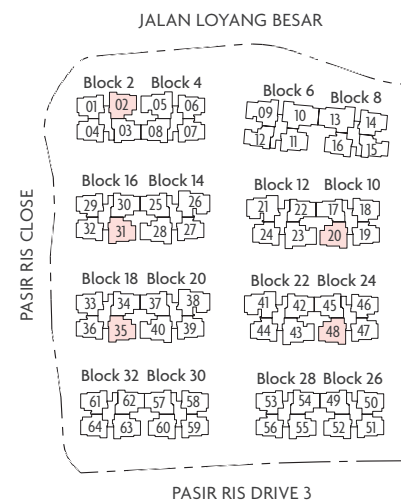


- PES - Private Enclosed Space
- WC - Water Closet
- F - Fridge (not included)
- W - Washer (not included)
- DB/ST - Distribution Board/Storage
- HS - Household Shelter
- RC - Reinforced Concrete
- AC - Air-Conditioner
- - Wall not allowed to be hacked or altered



Key plan is not drawn to scale

Area includes balcony or private enclosed space (PES), where applicable. All AC ledges and RC ledges (non-load bearing) are excluded from strata area. The above plans and illustrations are subject to change as may be required or approved by the relevant authorities. All areas and measurements stated herein as approximate and subject to final survey.



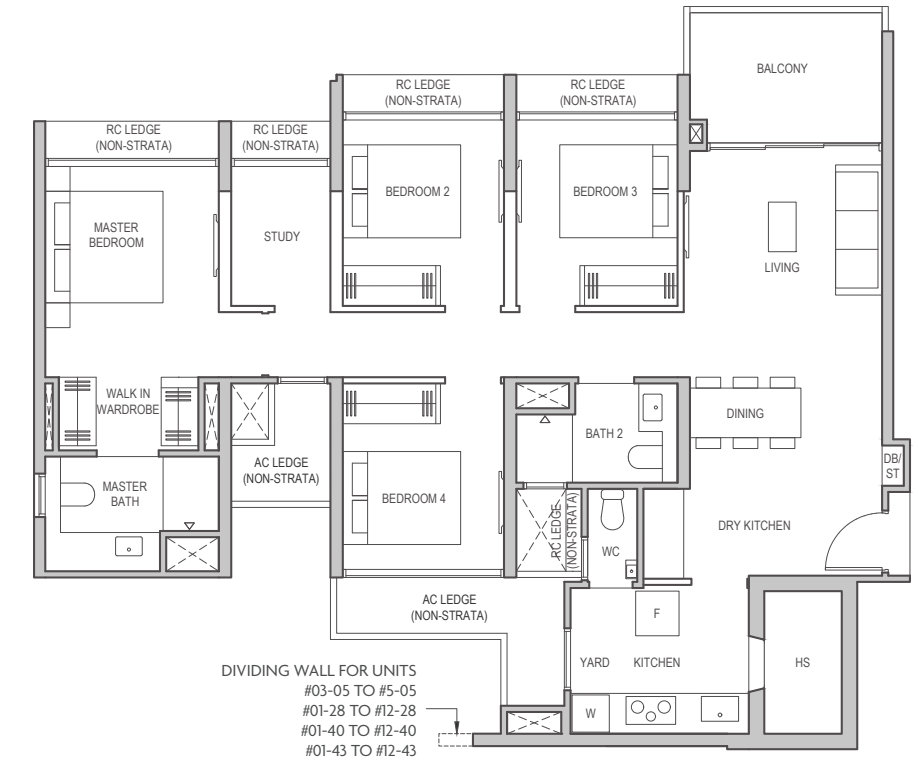
4 BEDROOM PREMIUM + STUDY

Type D4  
108 sqm (1163 sq ft)

Block 12 #02-23 to #12-23  
Block 22 #02-43 to #12-43

\*Mirrored Units

Block 14 #02-28\* to #12-28\*  
Block 20 #02-40\* to #12-40\*



Block 4 #03-05 to #05-05  
Block 6 #02-09 to #05-09

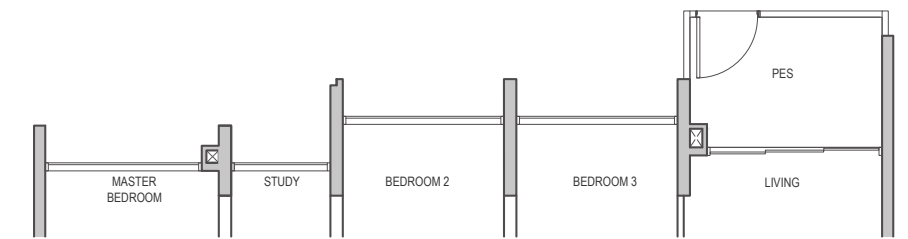
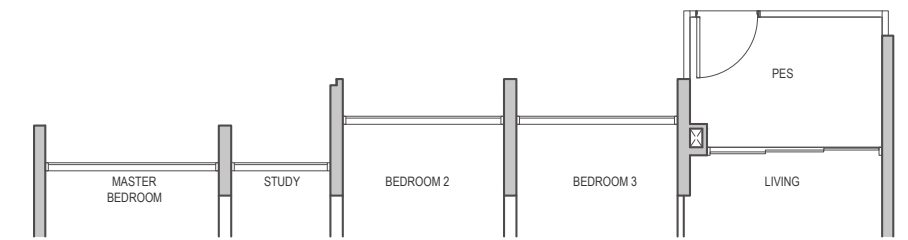
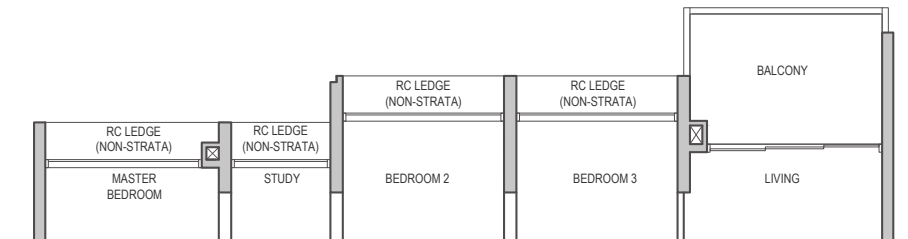
Type D4 (p)  
108 sqm (1163 sq ft)

Block 12 #01-23  
Block 22 #01-43

\*Mirrored Units

Block 14 #01-28\*  
Block 20 #01-40\*

Block 6 #01-09

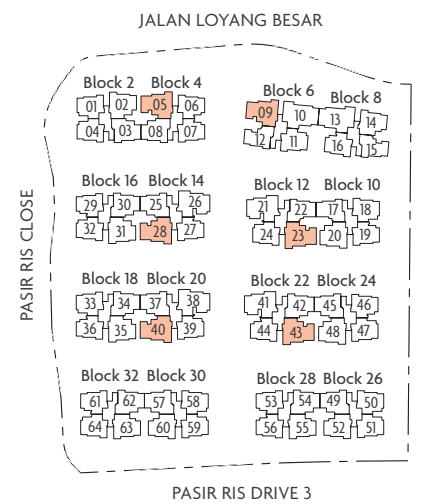


- PES - Private Enclosed Space
- WC - Water Closet
- F - Fridge (not included)
- W - Washer (not included)
- DB/ST - Distribution Board/Storage
- HS - Household Shelter
- RC - Reinforced Concrete
- AC - Air-Conditioner
- - Wall not allowed to be hacked or altered



Key plan is not drawn to scale

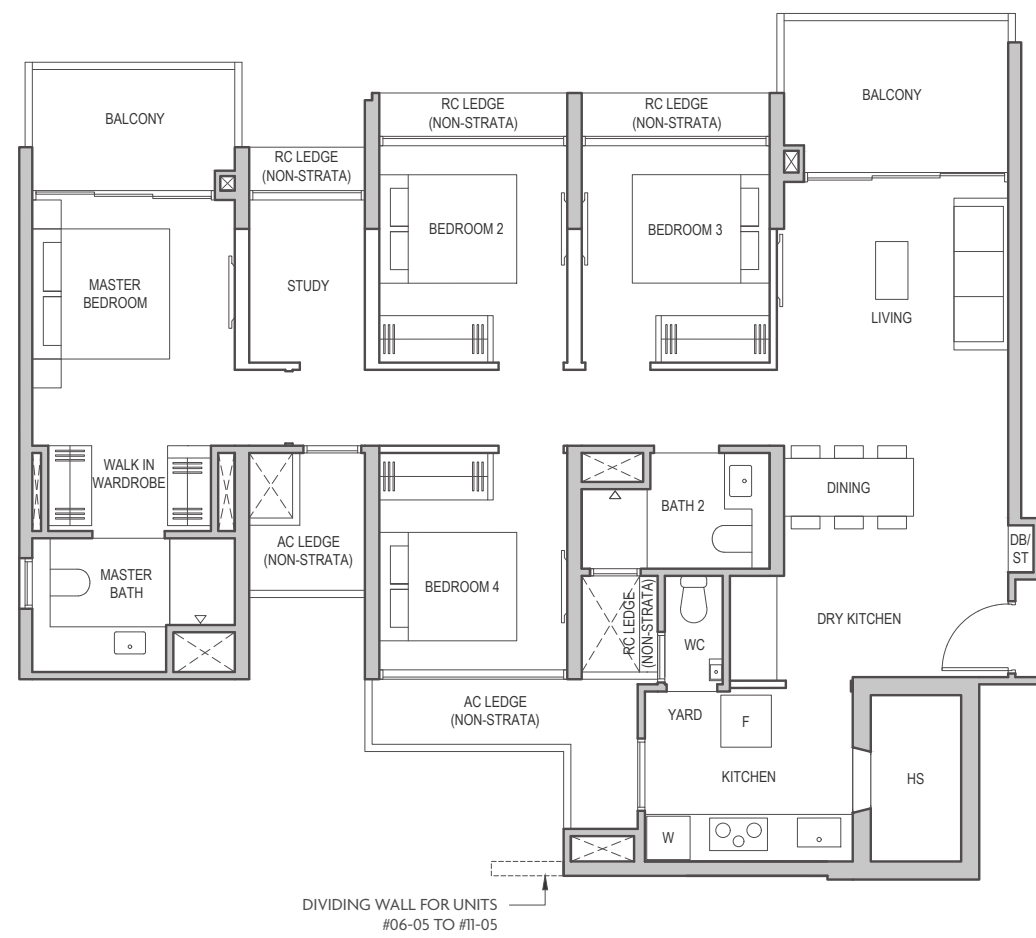
Area includes balcony or private enclosed space (PES), where applicable. All AC ledges and RC ledges (non-load bearing) are excluded from strata area. The above plans and illustrations are subject to change as may be required or approved by the relevant authorities. All areas and measurements stated herein as approximate and subject to final survey.



4 BEDROOM PREMIUM + STUDY

Type D4-B  
113 sqm (1216 sq ft)

Block 4 #06-05 to #11-05  
Block 6 #06-09 to #11-09



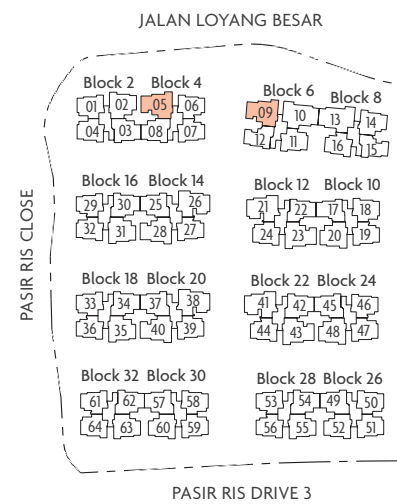
DIVIDING WALL FOR UNITS  
#06-05 TO #11-05

- PES - Private Enclosed Space
- WC - Water Closet
- F - Fridge (not included)
- W - Washer (not included)
- DB/ST - Distribution Board/Storage
- HS - Household Shelter
- RC - Reinforced Concrete
- AC - Air-Conditioner
- - Wall not allowed to be hacked or altered



Key plan is not drawn to scale

Area includes balcony or private enclosed space (PES), where applicable. All AC ledges and RC ledges (non-load bearing) are excluded from strata area. The above plans and illustrations are subject to change as may be required or approved by the relevant authorities. All areas and measurements stated herein as approximate and subject to final survey.

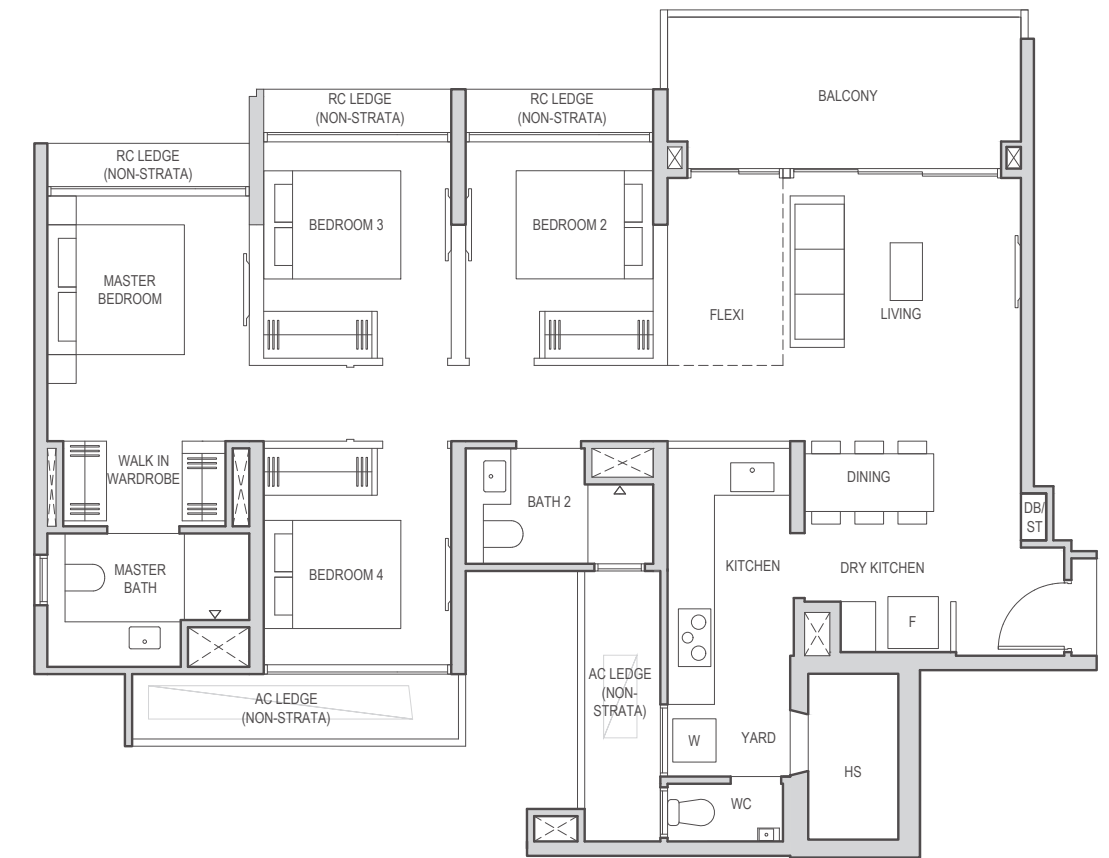


4 BEDROOM PREMIUM + FLEXI

Type D5  
112 sqm (1206 sq ft)

Block 12 #02-21 to #12-21  
Block 22 #02-41 to #12-41

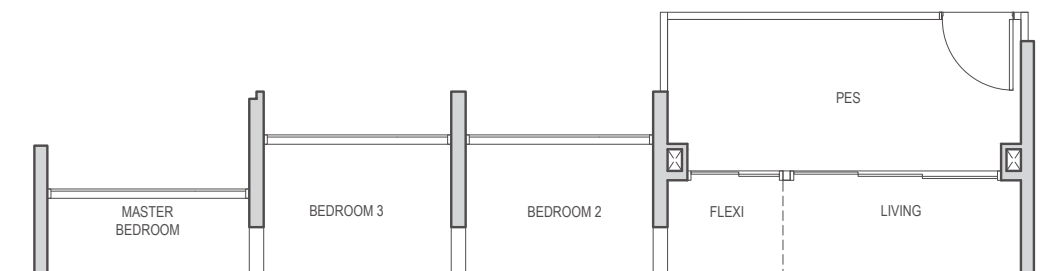
\*Mirrored Units  
Block 14 #02-26\* to #12-26\*  
Block 20 #02-38\* to #12-38\*



Type D5 (p)  
112 sqm (1206 sq ft)

Block 12 #01-21  
Block 22 #01-41

\*Mirrored Units  
Block 14 #01-26\*  
Block 20 #01-38\*

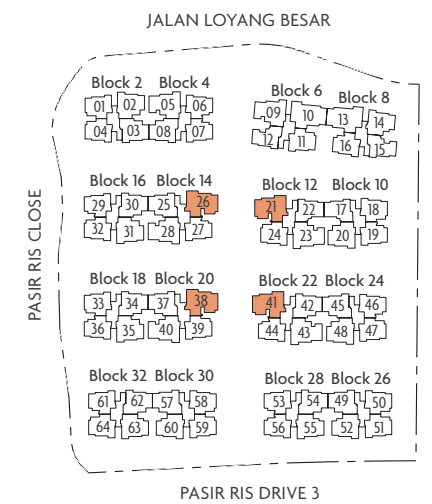


- PES - Private Enclosed Space
- WC - Water Closet
- F - Fridge (not included)
- W - Washer (not included)
- DB/ST - Distribution Board/Storage
- HS - Household Shelter
- RC - Reinforced Concrete
- AC - Air-Conditioner
- - Wall not allowed to be hacked or altered



Key plan is not drawn to scale

Area includes balcony or private enclosed space (PES), where applicable. All AC ledges and RC ledges (non-load bearing) are excluded from strata area. The above plans and illustrations are subject to change as may be required or approved by the relevant authorities. All areas and measurements stated herein as approximate and subject to final survey.

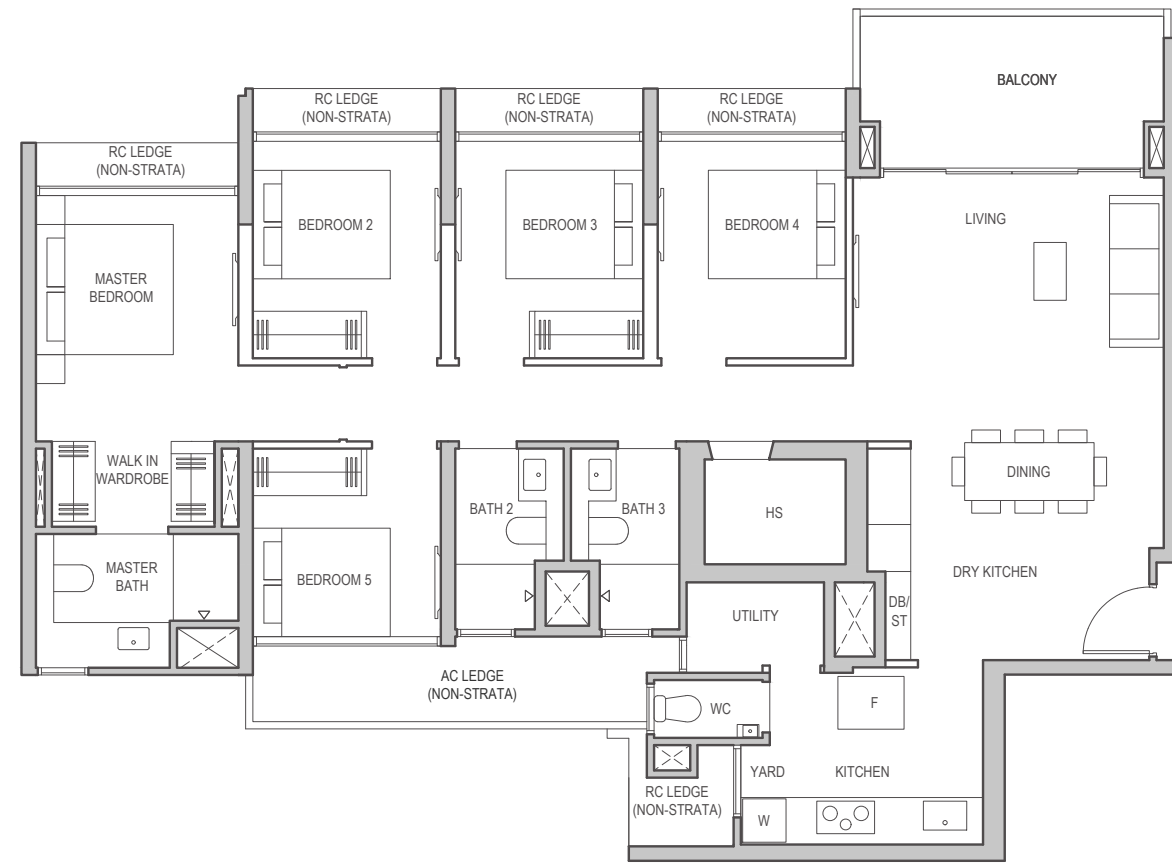


5 BEDROOM PREMIUM

Type E1  
127 sqm (1367 sq ft)

Block 8 #02-13 to #5-13

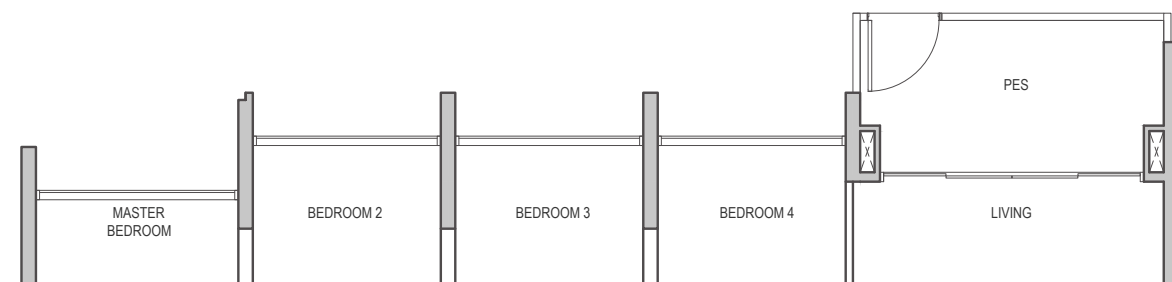
\*Mirrored Units  
Block 6 #02-10\* to #5-10\*



Type E1 (p)  
127 sqm (1367 sq ft)

Block 8 #01-13

\*Mirrored Units  
Block 6 #01-10\*

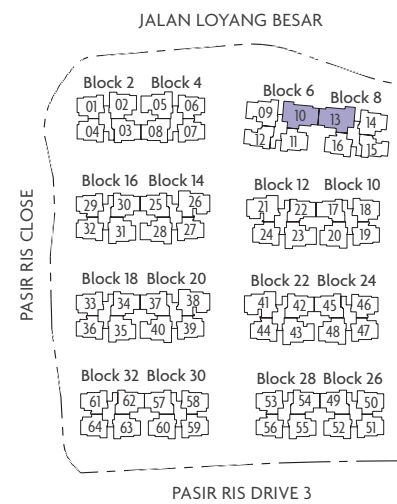


- PES - Private Enclosed Space
- WC - Water Closet
- F - Fridge (not included)
- W - Washer (not included)
- DB/ST - Distribution Board/Storage
- HS - Household Shelter
- RC - Reinforced Concrete
- AC - Air-Conditioner
- - Wall not allowed to be hacked or altered



Key plan is not drawn to scale

Area includes balcony or private enclosed space (PES), where applicable. All AC ledges and RC ledges (non-load bearing) are excluded from strata area. The above plans and illustrations are subject to change as may be required or approved by the relevant authorities. All areas and measurements stated herein as approximate and subject to final survey.



5 BEDROOM PREMIUM

Type E2  
132 sqm (1421 sq ft)

Block 8 #06-13 to #11-13

\*Mirrored Units  
Block 6 #06-10\* to #11-10\*



- PES - Private Enclosed Space
- WC - Water Closet
- F - Fridge (not included)
- W - Washer (not included)
- DB/ST - Distribution Board/Storage
- HS - Household Shelter
- RC - Reinforced Concrete
- AC - Air-Conditioner
- - Wall not allowed to be hacked or altered



Key plan is not drawn to scale

Area includes balcony or private enclosed space (PES), where applicable. All AC ledges and RC ledges (non-load bearing) are excluded from strata area. The above plans and illustrations are subject to change as may be required or approved by the relevant authorities. All areas and measurements stated herein as approximate and subject to final survey.

