

COME HOME
TO THE GOLD STANDARD
OF GREEN LIVING

2-BEDROOM + STUDY

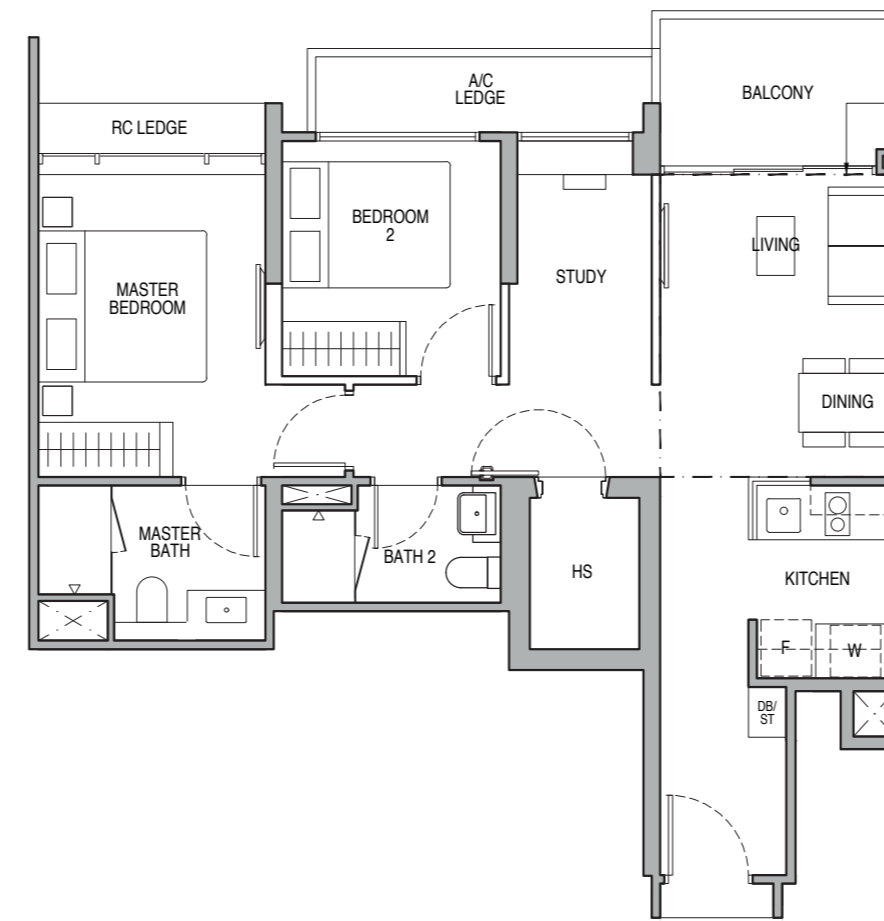
Type A1

75 sq m / 807 sq ft
BLK 55 : #04-09 to #13-09

Type A1-PH

86 sq m / 926 sq ft
BLK 55 : #14-09

Including strata void area of 11 sq m / 118 sq ft above living and dining with 4.5m floor to ceiling height

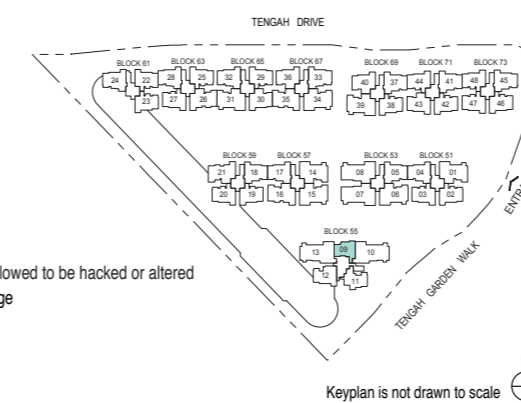


DOTTED LINE DENOTES STRATA VOID AREA OF 11 SQ M / 118 SQ FT ABOVE LIVING AND DINING FOR TYPE A1-PH

0 0.5 1 2 3 5M

PES - Private Enclosed Space
W - Washer/Dryer (not included)
WC - Water Closet
HS - Household Shelter
DB/ST - Distribution Board/Storage
RC - Reinforced Concrete
F - Fridge (not included)
A/C - Air-Conditioner
Wall not allowed to be hacked or altered
Mirror Image

Area includes air-conditioner (A/C) ledge, balcony and strata void area where applicable. The plans are subject to change as may be approved by relevant authorities. All floor plans are approximate measurements only and are subject to government re-survey. The balcony shall not be enclosed unless with the approved balcony screen. For an illustration of the approved balcony screen, please refer to the diagram annexed hereto as "Annexure A".



Type B1

87 sq m / 936 sq ft

BLK 51 : #02-02* to #13-02*, #02-03 to #13-03
BLK 59 : #06-19* to #13-19*
BLK 61 : #02-22 to #13-22, #06-23* to #13-23*
BLK 63 : #02-25 to #13-25
BLK 65 : #02-29 to #13-29
BLK 69 : #02-38* to #13-38*
BLK 71 : #02-42* to #13-42*, #02-44* to #13-44*
BLK 73 : #02-46* to #13-46*, #02-47 to #13-47, #02-48* to #13-48*

Type B1-P

87 sq m / 936 sq ft

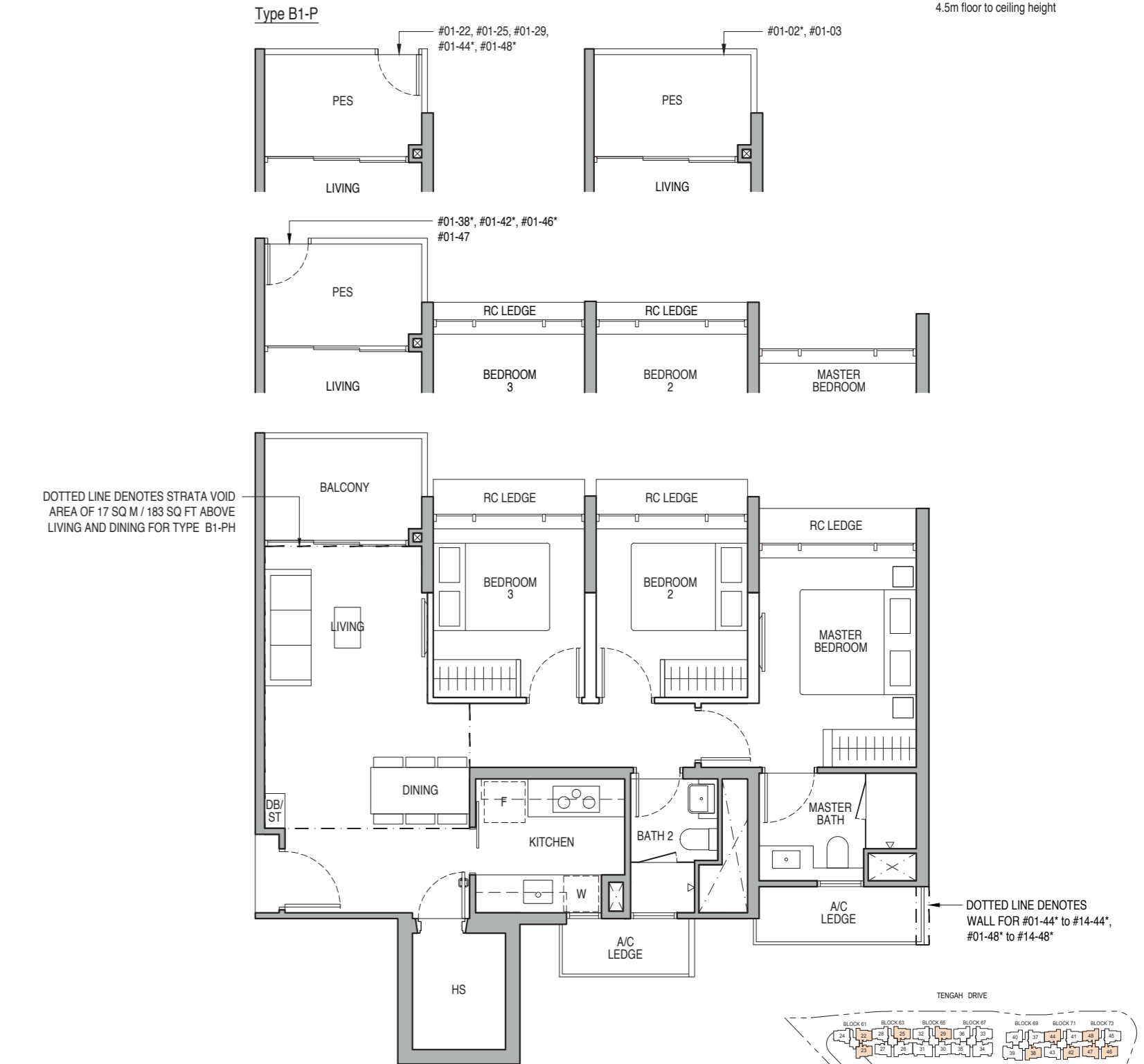
BLK 51 : #01-02*, #01-03
BLK 61 : #01-22
BLK 63 : #01-25
BLK 65 : #01-29
BLK 69 : #01-38*
BLK 71 : #01-42*, #01-44*
BLK 73 : #01-46*, #01-47, #01-48*

Type B1-PH

104 sq m / 1119 sq ft

BLK 51 : #14-02*, #14-03
BLK 59 : #14-19*
BLK 61 : #14-22, #14-23*
BLK 63 : #14-25
BLK 65 : #14-29
BLK 69 : #14-38*
BLK 71 : #14-42*, #14-44*
BLK 73 : #14-46*, #14-47, #14-48*

Including strata void area of 17 sq m / 183 sq ft above living and dining with 4.5m floor to ceiling height



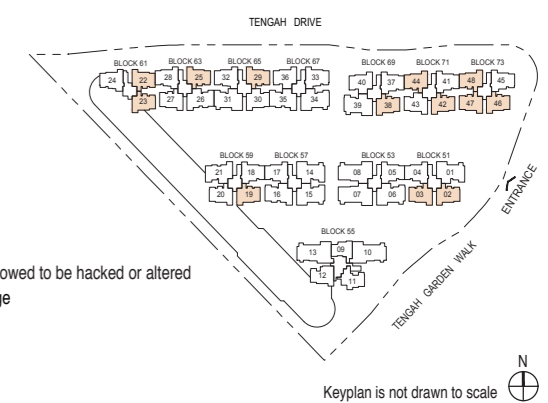
DOTTED LINE DENOTES STRATA VOID AREA OF 17 SQ M / 183 SQ FT ABOVE LIVING AND DINING FOR TYPE B1-PH

DOTTED LINE DENOTES WALL FOR #01-44* to #14-44*, #01-48* to #14-48*

0 0.5 1 2 3 5M

PES - Private Enclosed Space
W - Washer/Dryer (not included)
WC - Water Closet
HS - Household Shelter
DB/ST - Distribution Board/Storage
RC - Reinforced Concrete
F - Fridge (not included)
A/C - Air-Conditioner
Wall not allowed to be hacked or altered
Mirror Image

Area includes air-conditioner (A/C) ledge, balcony and strata void area where applicable. The plans are subject to change as may be approved by relevant authorities. All floor plans are approximate measurements only and are subject to government re-survey. The balcony shall not be enclosed unless with the approved balcony screen. For an illustration of the approved balcony screen, please refer to the diagram annexed hereto as "Annexure A".



3-BEDROOM DELUXE

3-BEDROOM DELUXE

Type B2

87 sq m / 936 sq ft
 BLK 59 : #06-20 to #13-20
 BLK 63 : #02-27 to #13-27

Type B2-P

87 sq m / 936 sq ft
 BLK 63 : #01-27

Type B2-PH

104 sq m / 1119 sq ft
 BLK 59 : #14-20
 BLK 63 : #14-27
 Including strata void area of 17 sq m / 183 sq ft above living and dining with 4.5m floor to ceiling height

Type B3

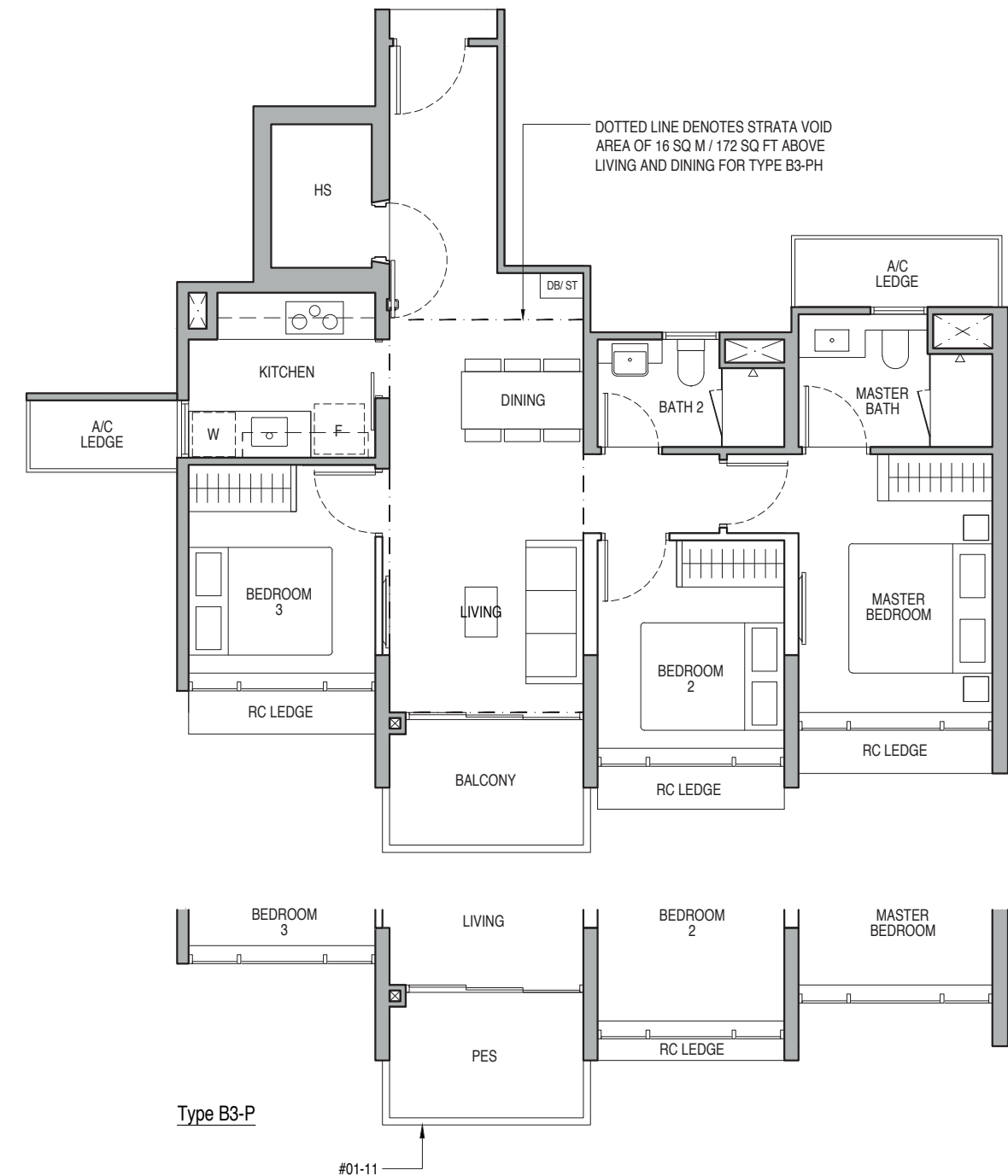
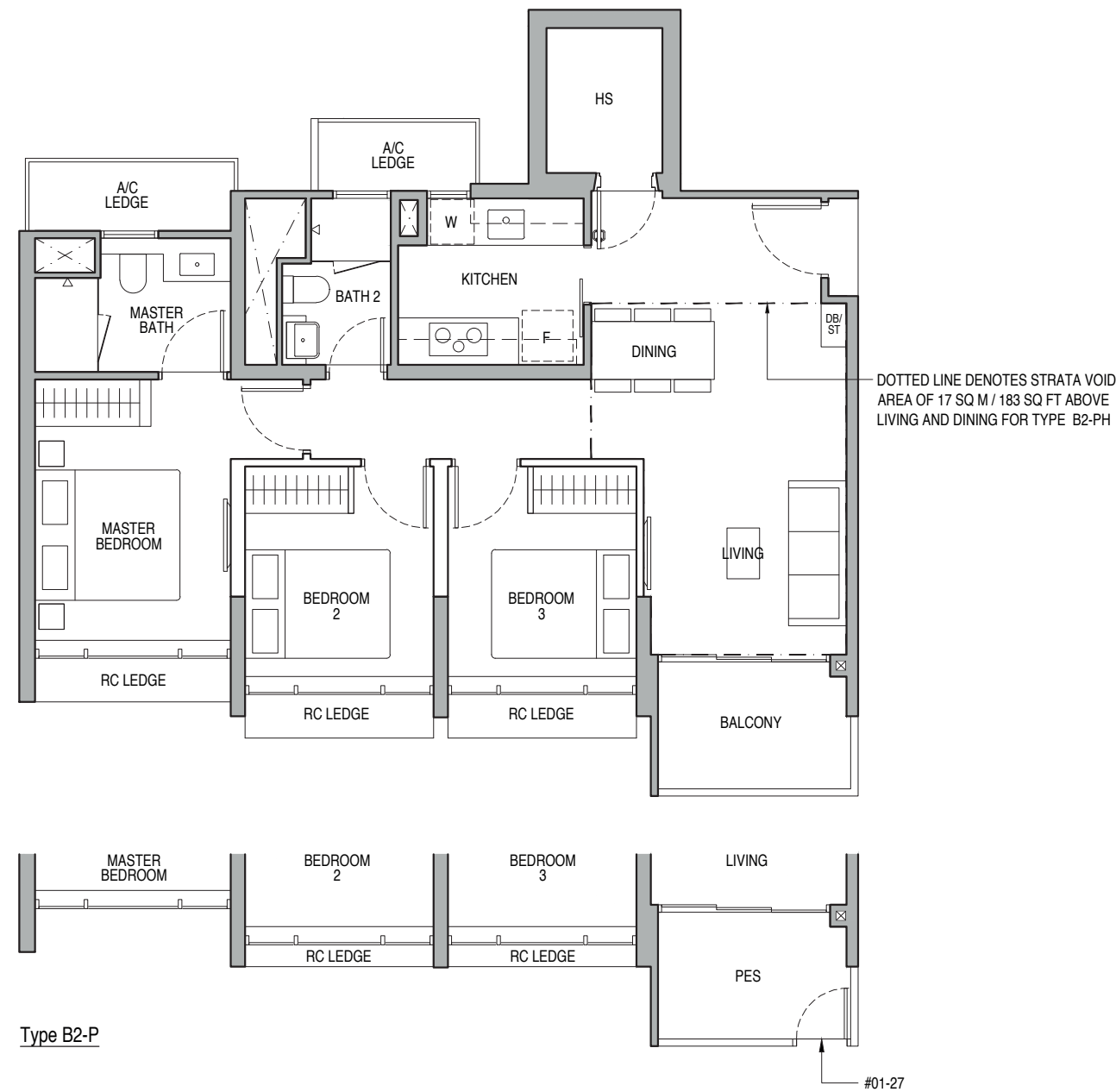
87 sq m / 936 sq ft
 BLK 55 : #02-11 to #13-11

Type B3-P

87 sq m / 936 sq ft
 BLK 55 : #01-11

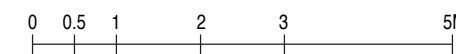
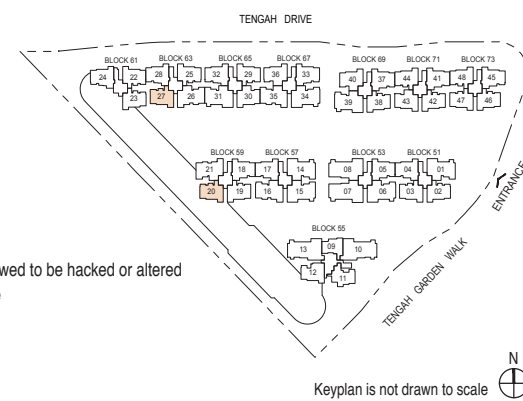
Type B3-PH

103 sq m / 1109 sq ft
 BLK 55 : #14-11
 Including strata void area of 16 sq m / 172 sq ft above living and dining with 4.5m floor to ceiling height



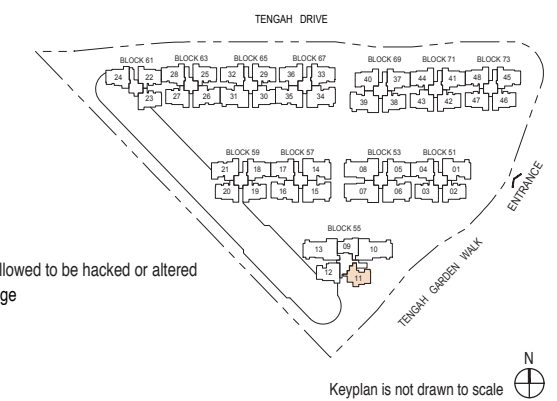
PES - Private Enclosed Space
 W - Washer/Dryer (not included)
 WC - Water Closet
 HS - Household Shelter
 DB/ST - Distribution Board/Storage
 RC - Reinforced Concrete
 F - Fridge (not included)
 A/C - Air-Conditioner
 Wall not allowed to be hacked or altered
 Mirror Image

Area includes air-conditioner (A/C) ledge, balcony and strata void area where applicable. The plans are subject to change as may be approved by relevant authorities. All floor plans are approximate measurements only and are subject to government re-survey. The balcony shall not be enclosed unless with the approved balcony screen. For an illustration of the approved balcony screen, please refer to the diagram annexed hereto as "Annexure A".



PES - Private Enclosed Space
 W - Washer/Dryer (not included)
 WC - Water Closet
 HS - Household Shelter
 DB/ST - Distribution Board/Storage
 RC - Reinforced Concrete
 F - Fridge (not included)
 A/C - Air-Conditioner
 Wall not allowed to be hacked or altered
 Mirror Image

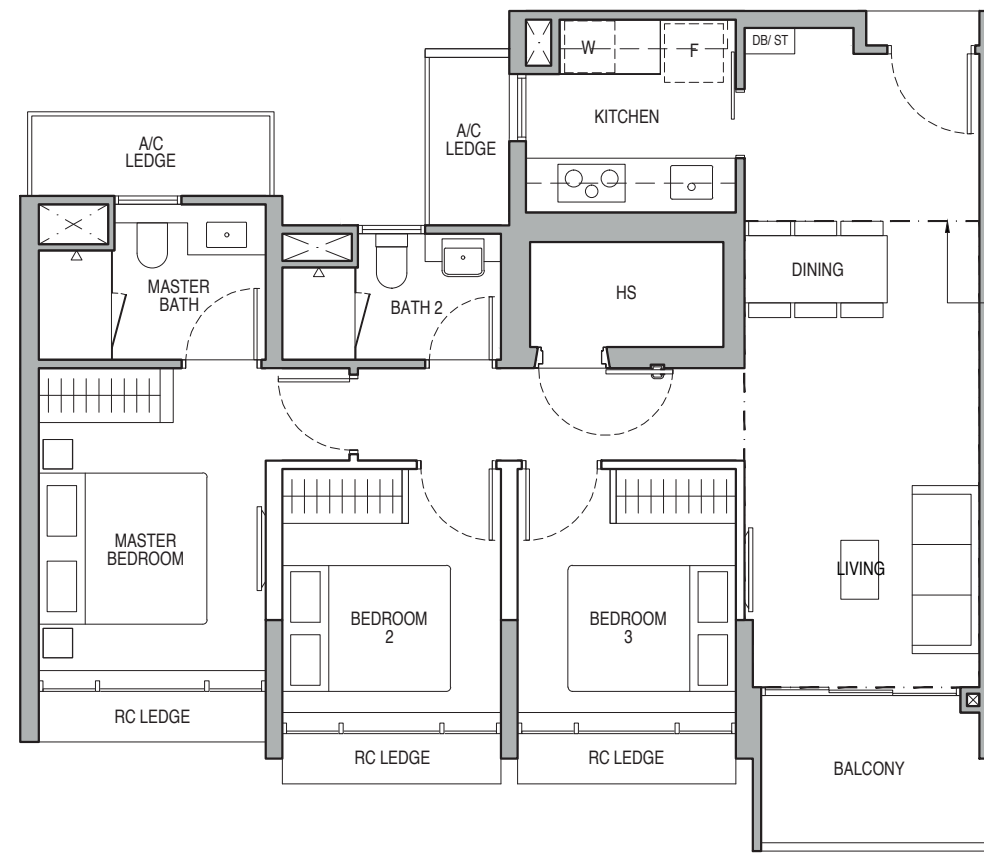
Area includes air-conditioner (A/C) ledge, balcony and strata void area where applicable. The plans are subject to change as may be approved by relevant authorities. All floor plans are approximate measurements only and are subject to government re-survey. The balcony shall not be enclosed unless with the approved balcony screen. For an illustration of the approved balcony screen, please refer to the diagram annexed hereto as "Annexure A".



3-BEDROOM DELUXE

Type B4

90 sq m / 969 sq ft
BLK 55 : #06-12 to #13-12



Type B4-PH

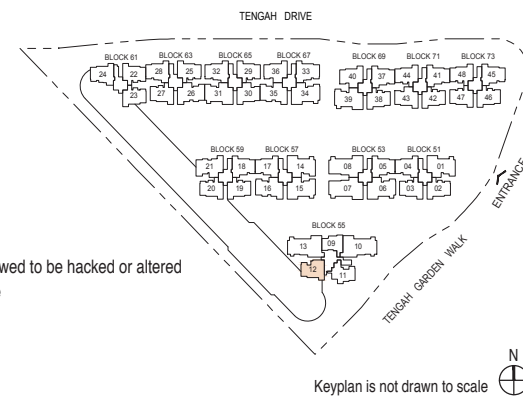
106 sq m / 1141 sq ft
BLK 55 : #14-12
Including strata void area of 16 sq m / 172 sq ft above living and dining with 4.5m floor to ceiling height

DOTTED LINE DENOTES STRATA VOID AREA OF 16 SQ M / 172 SQ FT ABOVE LIVING AND DINING FOR TYPE B4-PH



PES - Private Enclosed Space
W - Washer/Dryer (not included)
WC - Water Closet
HS - Household Shelter
DB/ST - Distribution Board/Storage
RC - Reinforced Concrete
F - Fridge (not included)
A/C - Air-Conditioner
Wall not allowed to be hacked or altered
Mirror Image

Area includes air-conditioner (A/C) ledge, balcony and strata void area where applicable. The plans are subject to change as may be approved by relevant authorities. All floor plans are approximate measurements only and are subject to government re-survey. The balcony shall not be enclosed unless with the approved balcony screen. For an illustration of the approved balcony screen, please refer to the diagram annexed hereto as "Annexure A".



3-BEDROOM PREMIUM

Type B5

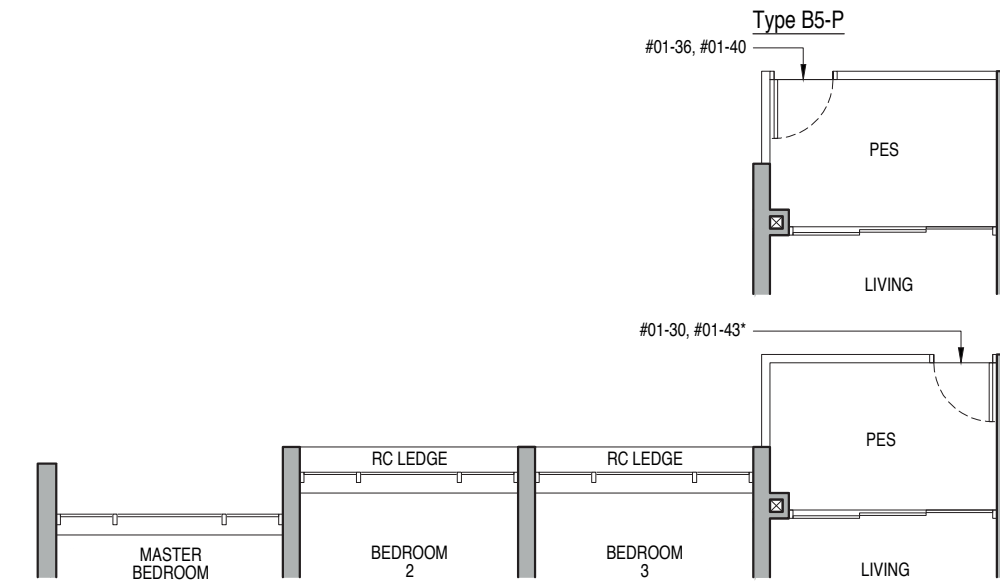
93 sq m / 1001 sq ft
BLK 65 : #02-30 to #13-30
BLK 67 : #02-36 to #13-36
BLK 69 : #02-40 to #13-40
BLK 71 : #02-43* to #13-43*

Type B5-P

93 sq m / 1001 sq ft
BLK 65 : #01-30
BLK 67 : #01-36
BLK 69 : #01-40
BLK 71 : #01-43*

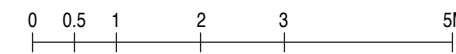
Type B5-PH

110 sq m / 1184 sq ft
BLK 65 : #14-30
BLK 67 : #14-36
BLK 69 : #14-40
BLK 71 : #14-43*
Including strata void area of 17 sq m / 183 sq ft above living and dining with 4.5m floor to ceiling height



DOTTED LINE DENOTES STRATA VOID AREA OF 17 SQ M / 183 SQ FT ABOVE LIVING AND DINING FOR TYPE B5-PH

DOTTED LINE DENOTES WALL FOR #01-30 to #14-30



PES - Private Enclosed Space
W - Washer/Dryer (not included)
WC - Water Closet
HS - Household Shelter
DB/ST - Distribution Board/Storage
RC - Reinforced Concrete
F - Fridge (not included)
A/C - Air-Conditioner
Wall not allowed to be hacked or altered
Mirror Image

Area includes air-conditioner (A/C) ledge, balcony and strata void area where applicable. The plans are subject to change as may be approved by relevant authorities. All floor plans are approximate measurements only and are subject to government re-survey. The balcony shall not be enclosed unless with the approved balcony screen. For an illustration of the approved balcony screen, please refer to the diagram annexed hereto as "Annexure A".



3-BEDROOM PREMIUM

3-BEDROOM PREMIUM

Type B6

94 sq m / 1012 sq ft

- BLK 51 : #02-04* to #13-04*
- BLK 53 : #02-05 to #13-05
- BLK 57 : #02-17* to #13-17*
- BLK 59 : #02-18 to #13-18
- BLK 63 : #02-28* to #13-28*
- BLK 65 : #02-32* to #13-32*
- BLK 67 : #02-33 to #13-33
- BLK 69 : #02-37 to #13-37
- BLK 71 : #02-41 to #13-41
- BLK 73 : #02-45 to #13-45

Type B6-P

94 sq m / 1012 sq ft

- BLK 51 : #01-04*
- BLK 53 : #01-05
- BLK 57 : #01-17*
- BLK 59 : #01-18
- BLK 63 : #01-28*
- BLK 65 : #01-32*
- BLK 67 : #01-33
- BLK 69 : #01-37
- BLK 71 : #01-41
- BLK 73 : #01-45

Type B6-PH

110 sq m / 1184 sq ft

- BLK 51 : #14-04*
- BLK 53 : #14-05
- BLK 57 : #14-17*
- BLK 59 : #14-18
- BLK 63 : #14-28*
- BLK 65 : #14-32*
- BLK 67 : #14-33
- BLK 69 : #14-37
- BLK 71 : #14-41
- BLK 73 : #14-45

Type B7

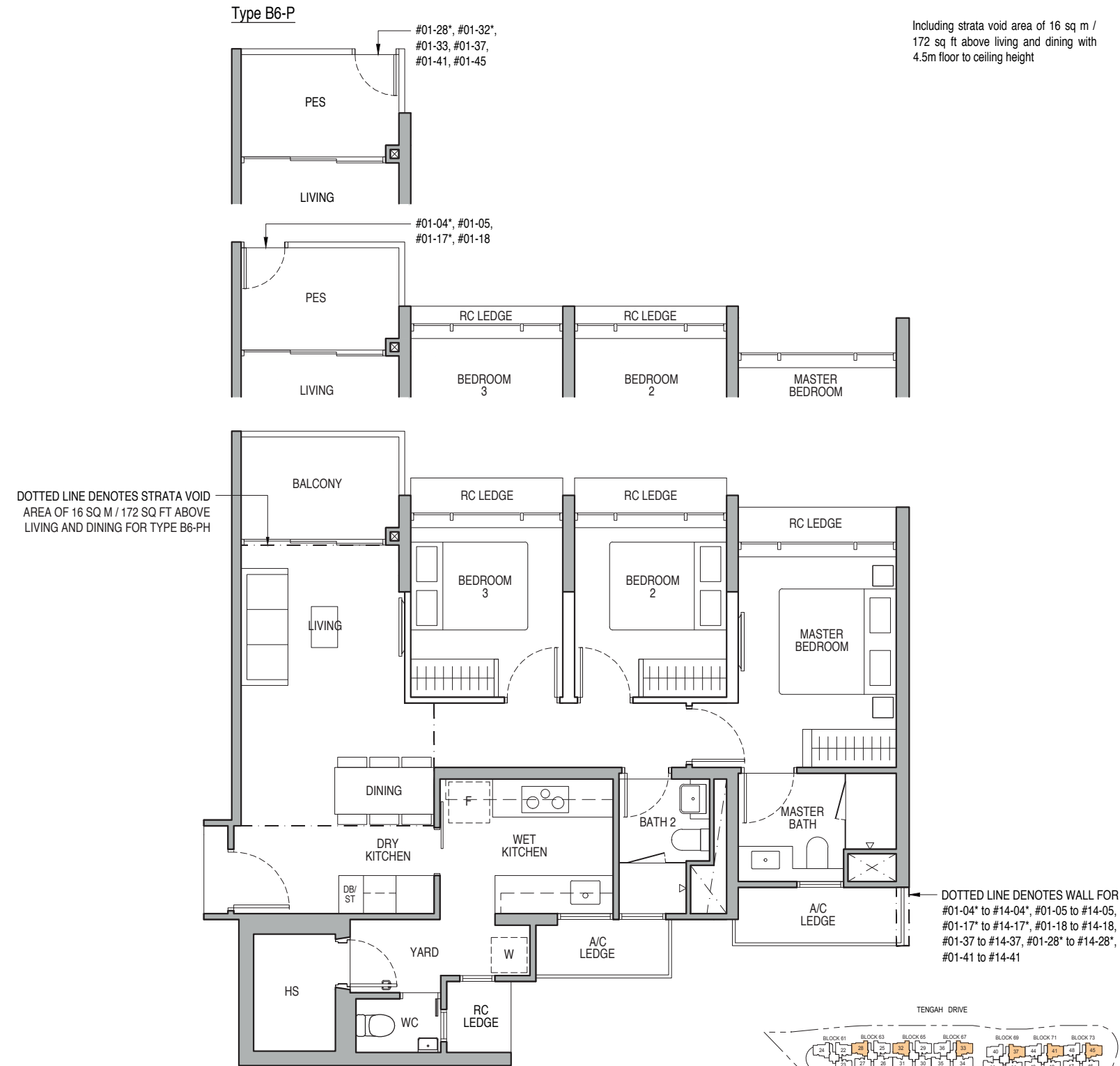
94 sq m / 1012 sq ft

- BLK 61 : #06-24 to #13-24

Type B7-PH

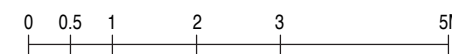
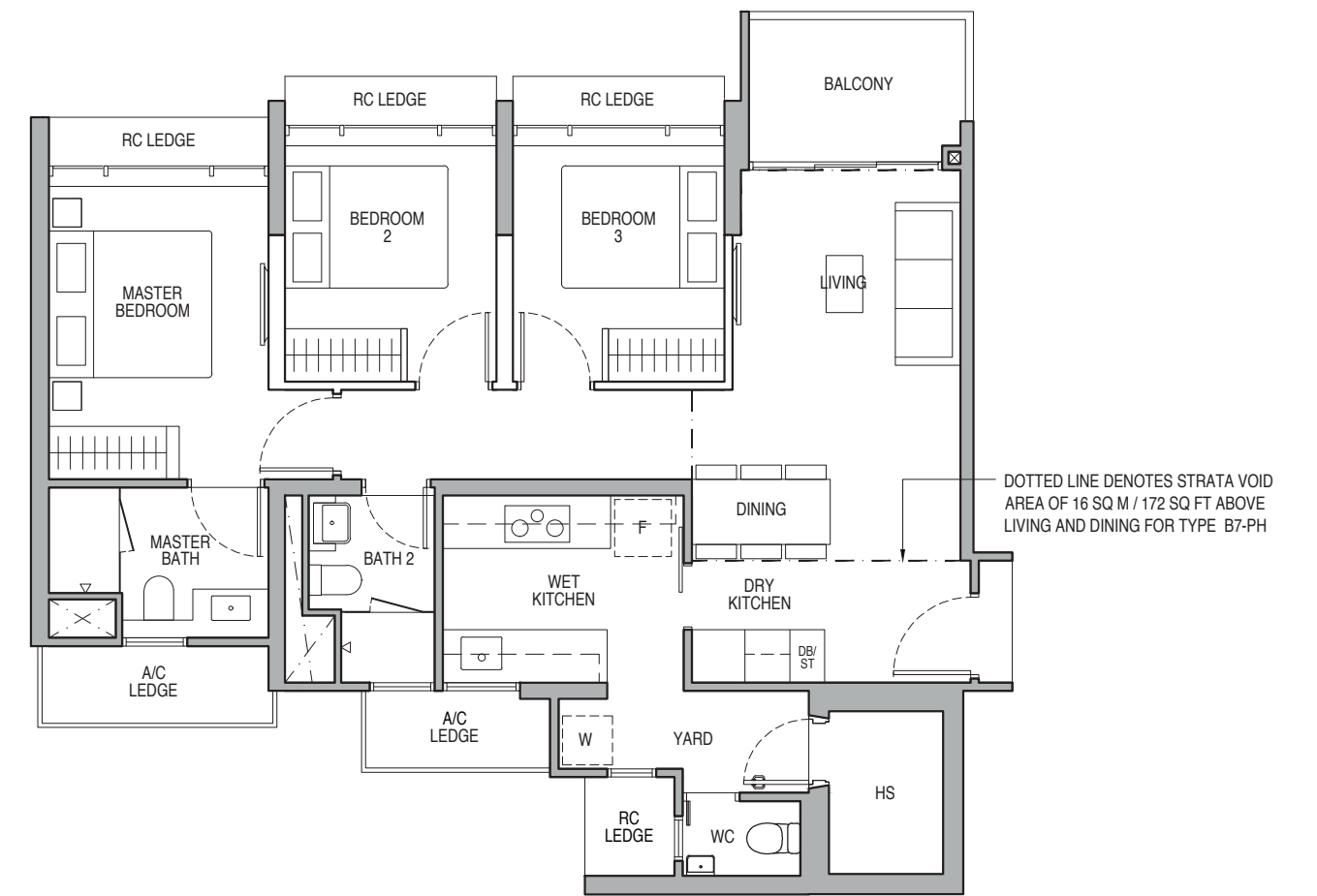
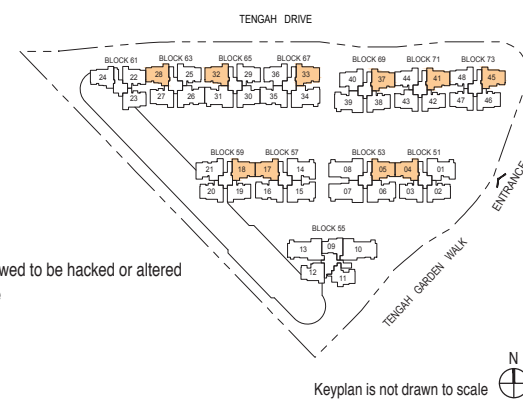
110 sq m / 1184 sq ft

- BLK 61 : #14-24
- Including strata void area of 16 sq m / 172 sq ft above living and dining with 4.5m floor to ceiling height



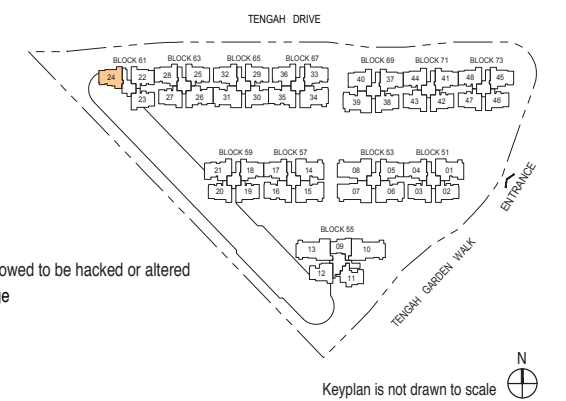
- PES - Private Enclosed Space
- W - Washer/Dryer (not included)
- HS - Household Shelter
- DB/ST - Distribution Board/Storage
- RC - Reinforced Concrete
- F - Fridge (not included)
- A/C - Air-Conditioner
- Wall not allowed to be hacked or altered
- Mirror Image

Area includes air-conditioner (A/C) ledge, balcony and strata void area where applicable. The plans are subject to change as may be approved by relevant authorities. All floor plans are approximate measurements only and are subject to government re-survey. The balcony shall not be enclosed unless with the approved balcony screen. For an illustration of the approved balcony screen, please refer to the diagram annexed hereto as "Annexure A".



- PES - Private Enclosed Space
- W - Washer/Dryer (not included)
- HS - Household Shelter
- DB/ST - Distribution Board/Storage
- RC - Reinforced Concrete
- F - Fridge (not included)
- A/C - Air-Conditioner
- Wall not allowed to be hacked or altered
- Mirror Image

Area includes air-conditioner (A/C) ledge, balcony and strata void area where applicable. The plans are subject to change as may be approved by relevant authorities. All floor plans are approximate measurements only and are subject to government re-survey. The balcony shall not be enclosed unless with the approved balcony screen. For an illustration of the approved balcony screen, please refer to the diagram annexed hereto as "Annexure A".



4-BEDROOM DELUXE

Type C1

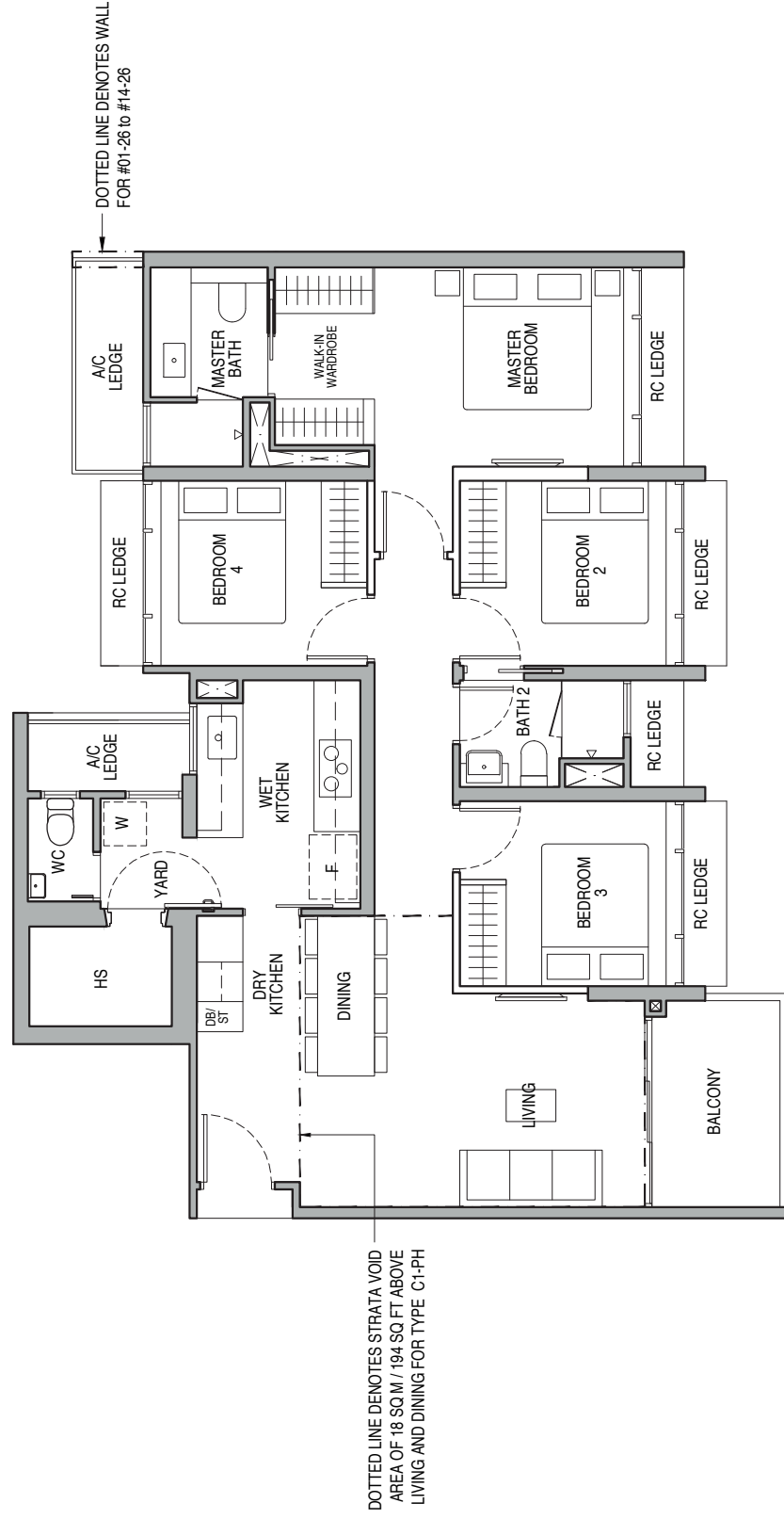
110 sq m / 1184 sq ft

BLK 59 : #06-21 to #13-21
 BLK 63 : #02-26 to #13-26
 BLK 67 : #02-35* to #13-35*

Type C1-P

110 sq m / 1184 sq ft

BLK 63 : #01-26
 BLK 67 : #01-35*



DOTTED LINE DENOTES STRATA VOID AREA OF 18 SQ.M / 194 SQ.FT. ABOVE LIVING AND DINING FOR TYPE C1-PH

#01-26, #01-35*
Type C1-P



Wall not allowed to be tracked or altered
 Mirror Image

P.E.S. - Private Enclosed Space
 W - Washer/Dryer (not included)
 WC - Water Closet
 HS - Household Shelter
 DBST - Distribution Board/Storage
 RC - Reinforced Concrete
 F - Fridge (not included)
 AC - Air-Conditioner

Area includes air-conditioner (AC) ledge, balcony and strata void area where applicable. The plans are subject to change as may be approved by relevant authorities. All floor plans are approximate measurements only and are subject to government re-survey. The balcony shall not be enclosed unless with the approved balcony screen. For an illustration of the approved balcony screen, please refer to the diagram annexed hereto as 'Annexure A'.



Keyplan is not drawn to scale

Type C1-PH

128 sq m / 1378 sq ft

BLK 59 : #14-21
 BLK 63 : #14-26
 BLK 67 : #14-35*

Including strata void area of 18 sq m / 194 sq ft above living and dining with 4.5m floor to ceiling height

4-BEDROOM DELUXE

Type C2

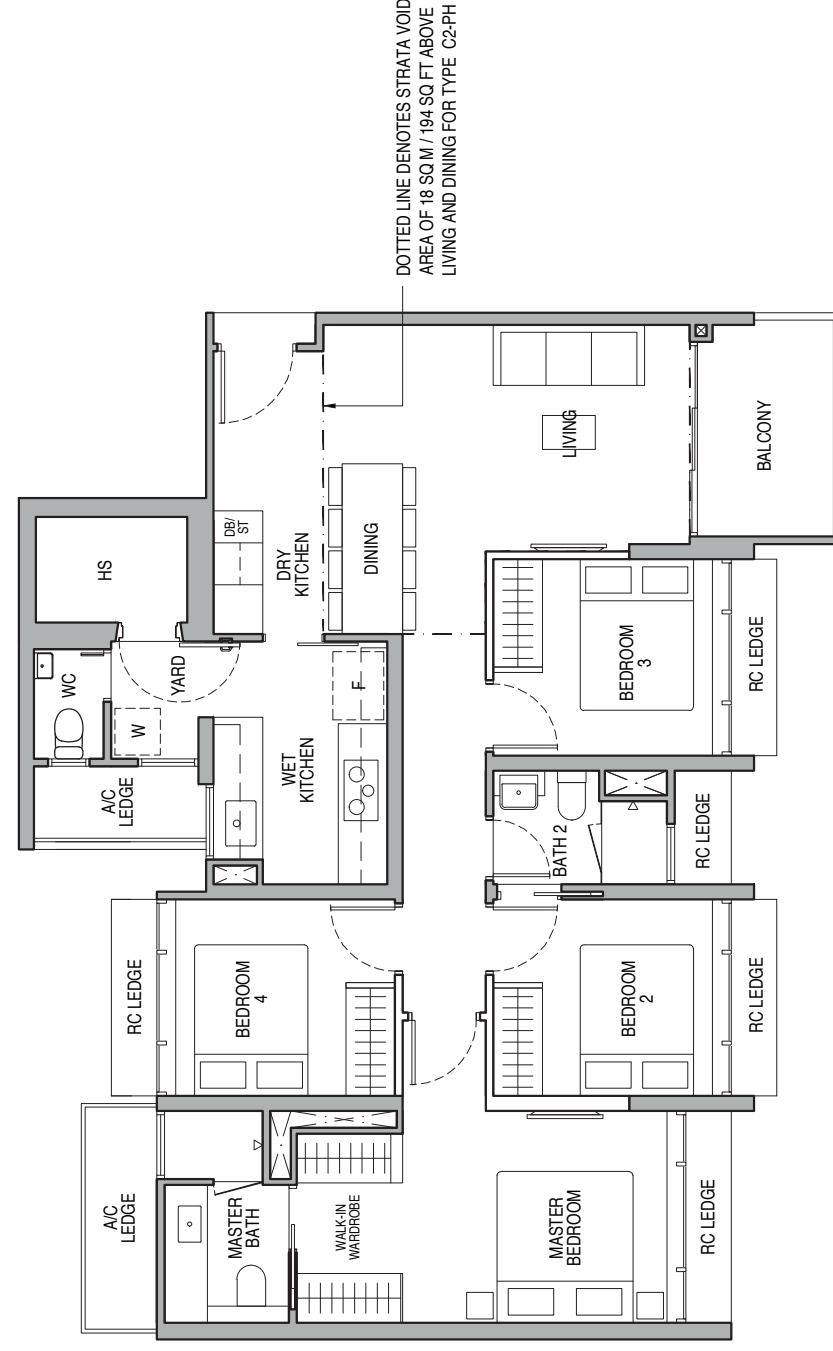
110 sq m / 1184 sq ft

BLK 57 : #02-16 to #13-16

Type C2-P

110 sq m / 1184 sq ft

BLK 57 : #01-16



DOTTED LINE DENOTES STRATA VOID AREA OF 18 SQ.M / 194 SQ.FT. ABOVE LIVING AND DINING FOR TYPE C2-PH

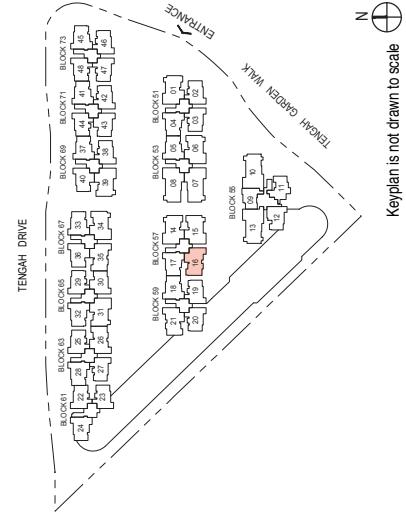
Type C2-P



Wall not allowed to be tracked or altered
 Mirror Image

P.E.S. - Private Enclosed Space
 W - Washer/Dryer (not included)
 WC - Water Closet
 HS - Household Shelter
 DBST - Distribution Board/Storage
 RC - Reinforced Concrete
 F - Fridge (not included)
 AC - Air-Conditioner

Area includes air-conditioner (AC) ledge, balcony and strata void area where applicable. The plans are subject to change as may be approved by relevant authorities. All floor plans are approximate measurements only and are subject to government re-survey. The balcony shall not be enclosed unless with the approved balcony screen. For an illustration of the approved balcony screen, please refer to the diagram annexed hereto as 'Annexure A'.



Keyplan is not drawn to scale

4-BEDROOM PREMIUM

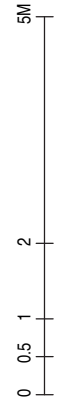
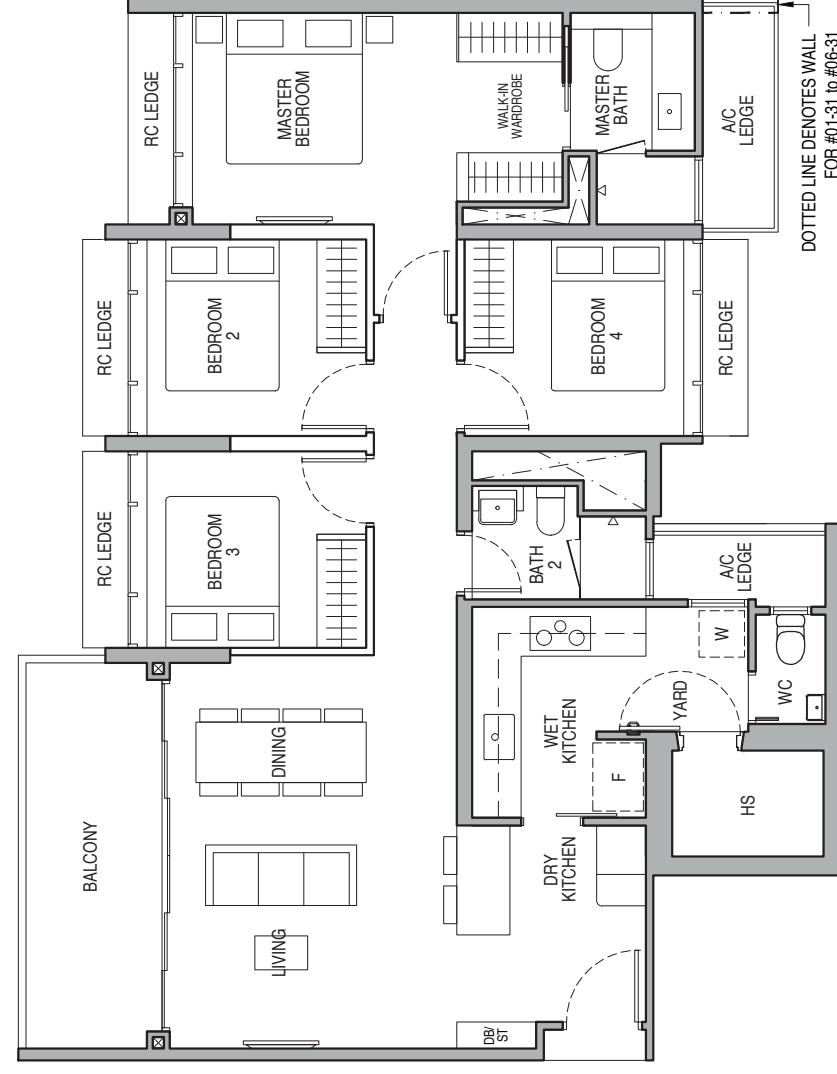
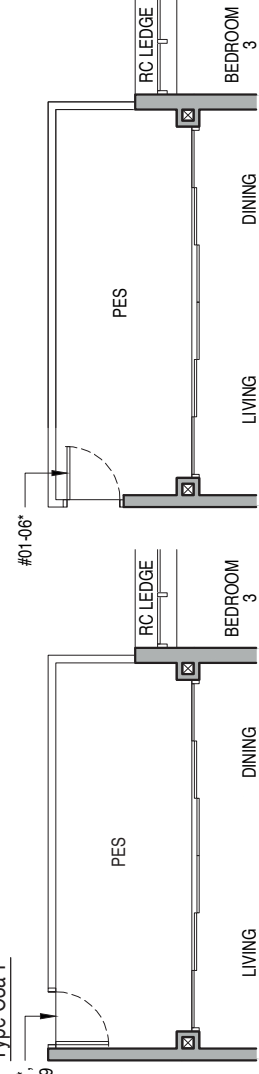
Type C3a

117 sq m / 1259 sq ft

- BLK 51 : #02-01 to #06-01
- BLK 53 : #02-06* to #06-06*
- BLK 57 : #02-14 to #06-14, #02-15* to #06-15*
- BLK 65 : #02-31 to #06-31
- BLK 67 : #02-34* to #06-34*
- BLK 69 : #02-39 to #06-39

Type C3a-P

- #01-01, #01-14, #01-15*, #01-31, #01-34*, #01-39

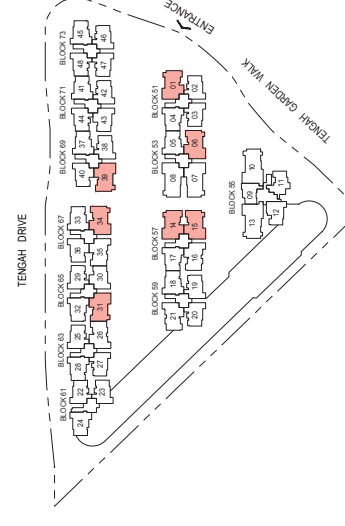


Wall not allowed to be tracked or altered
Mirror Image

P.E.S. - Private Enclosed Space
W - Washer/Dryer (not included)
WC - Water Closet
HS - Household Shelter
DB/ST - Distribution Board/Storage
RC - Reinforced Concrete
F - Fridges (not included)
AC - Air-Conditioner

Area includes air-conditioner (A/C) ledge, balcony and strata void area where applicable. The plans are subject to change as may be approved by relevant authorities. All floor plans are approximate measurements only and are subject to government re-survey. The balcony shall not be enclosed unless with the approved balcony screen. For an illustration of the approved balcony screen, please refer to the diagram annexed hereto as 'Annexure A'.

Keyplan is not drawn to scale



Type C3a-P

117 sq m / 1259 sq ft

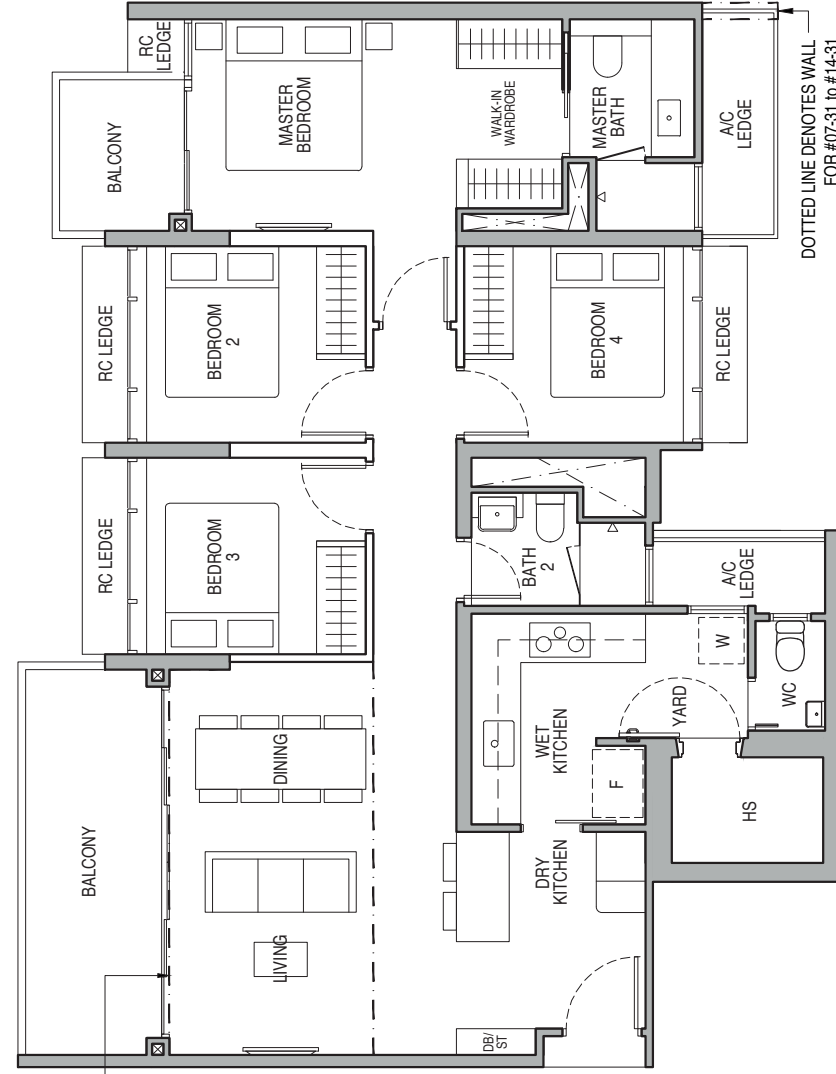
- BLK 51 : #01-01
- BLK 53 : #01-06*
- BLK 57 : #01-14, #01-15*
- BLK 65 : #01-31
- BLK 67 : #01-34*
- BLK 69 : #01-39

4-BEDROOM PREMIUM

Type C3b

120 sq m / 1292 sq ft

- BLK 51 : #07-01 to #13-01
- BLK 53 : #07-06* to #13-06*
- BLK 57 : #07-14 to #13-14, #07-15* to #13-15*
- BLK 65 : #07-31 to #13-31
- BLK 67 : #07-34* to #13-34*
- BLK 69 : #07-39 to #13-39



DOTTED LINE DENOTES STRATA VOID AREA OF 15 SQ M / 161 SQ FT ABOVE LIVING AND DINING FOR TYPE C3b-PH

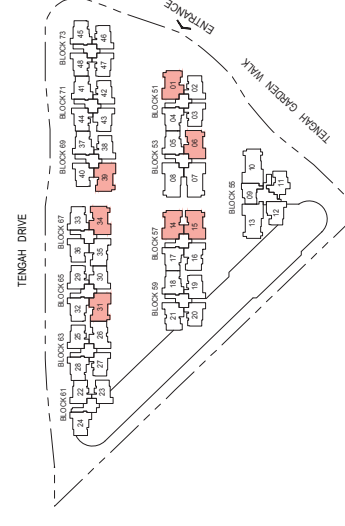


Wall not allowed to be tracked or altered
Mirror Image

P.E.S. - Private Enclosed Space
W - Washer/Dryer (not included)
WC - Water Closet
HS - Household Shelter
DB/ST - Distribution Board/Storage
RC - Reinforced Concrete
F - Fridges (not included)
AC - Air-Conditioner

Area includes air-conditioner (A/C) ledge, balcony and strata void area where applicable. The plans are subject to change as may be approved by relevant authorities. All floor plans are approximate measurements only and are subject to government re-survey. The balcony shall not be enclosed unless with the approved balcony screen. For an illustration of the approved balcony screen, please refer to the diagram annexed hereto as 'Annexure A'.

Keyplan is not drawn to scale



Type C3b-PH

135 sq m / 1453 sq ft

- BLK 51 : #14-01
- BLK 53 : #14-06*
- BLK 57 : #14-14, #14-15*
- BLK 65 : #14-31
- BLK 67 : #14-34*
- BLK 69 : #14-39

Including strata void area of 15 sq m / 161 sq ft above living and dining with 4.5m floor to ceiling height

5-BEDROOM PREMIUM

Type D1

141 sq m / 1518 sq ft

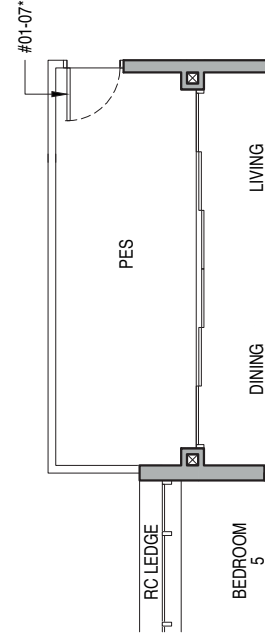
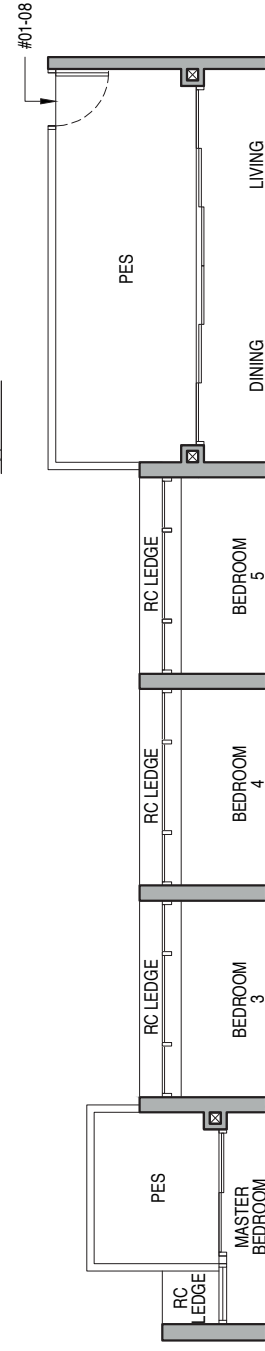
BLK 53 : #02-07* to #13-07*, #02-08 to #13-08

Type D1-P

141 sq m / 1518 sq ft

BLK 53 : #01-07*, #01-08

Type D1-P

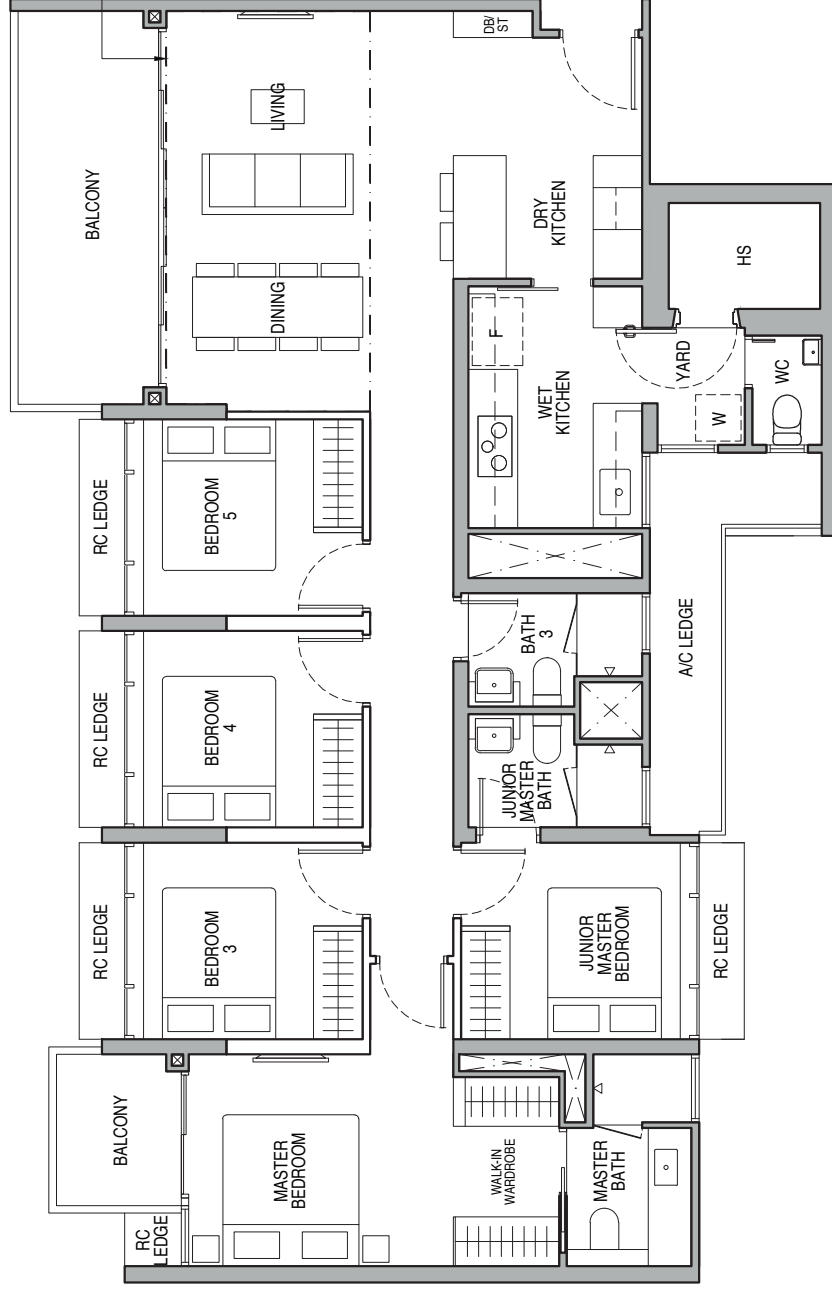
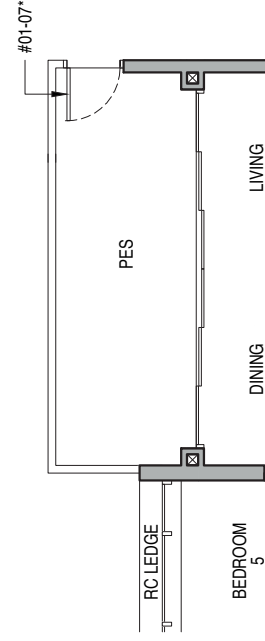


Type D1-PH

156 sq m / 1679 sq ft

BLK 53 : #14-07*, #14-08

Including strata void area of 15 sq m / 161 sq ft above living and dining with 4.5m floor to ceiling height



..... DOTTED LINE DENOTES STRATA VOID AREA OF 15 SQ M / 161 SQ FT ABOVE LIVING AND DINING FOR TYPE D1-PH

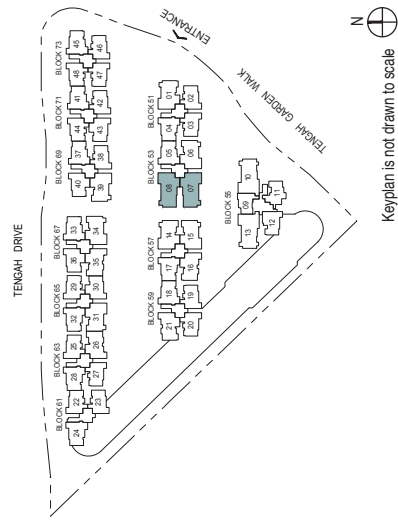


Wall not allowed to be tracked or altered
Mirror Image

P.E.S. - Private Enclosed Space
W - Washer/Dryer (not included)
WC - Water Closet
HS - Household Shelter
DBIST - Distribution Board/Storage
RC - Reinforced Concrete

F - Fridge (not included)
AC - Air-Conditioner

Area includes air-conditioner (AC) ledge, balcony and strata void area where applicable. The plans are subject to change as may be approved by relevant authorities. All floor plans are approximate measurements only and are subject to government re-survey. The balcony shall not be enclosed unless with the approved balcony screen. For an illustration of the approved balcony screen, please refer to the diagram annexed hereto as 'Annexure A'.



Keyplan is not drawn to scale

5-BEDROOM PREMIUM

Type D2

145 sq m / 1561 sq ft

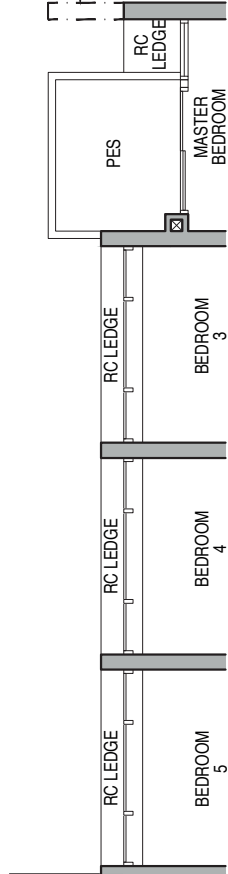
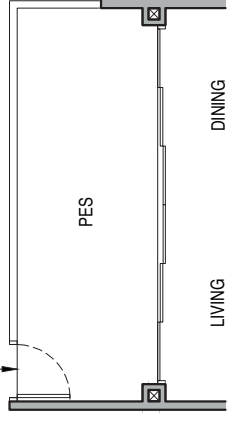
BLK 55 : #02-10 to #13-10, #02-13* to #13-13*

Type D2-P

145 sq m / 1561 sq ft

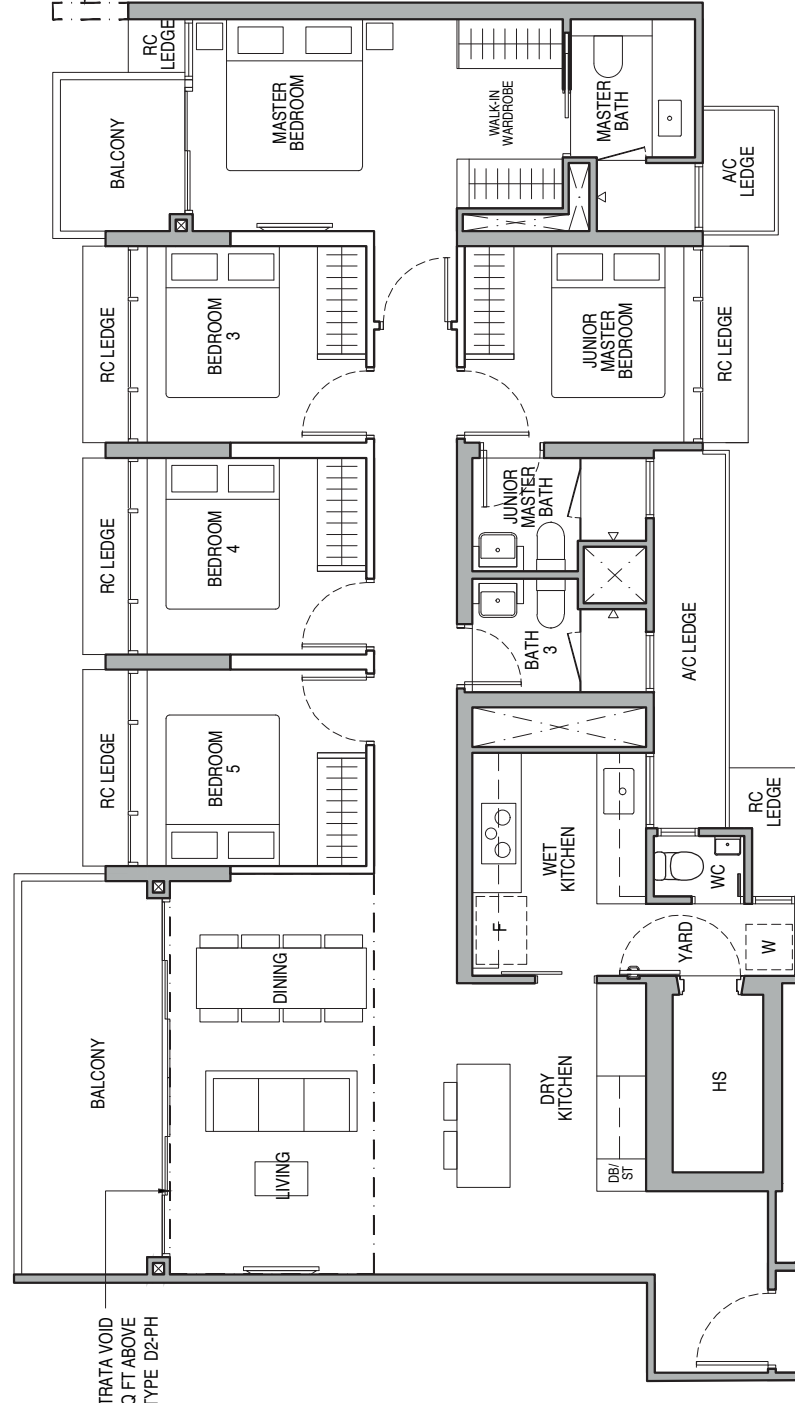
BLK 55 : #01-10, #01-13*

Type D2-P



..... DOTTED LINE DENOTES WALL FOR #01-13*

..... DOTTED LINE DENOTES STRATA VOID AREA OF 15 SQ M / 161 SQ FT ABOVE LIVING AND DINING FOR TYPE D2-PH



..... DOTTED LINE DENOTES WALL FOR #02-13* to #14-13*

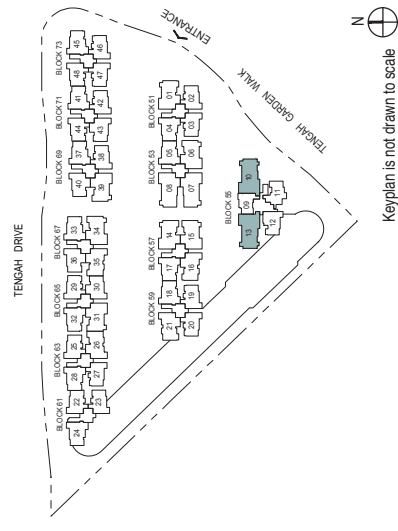


Wall not allowed to be tracked or altered
Mirror Image

P.E.S. - Private Enclosed Space
W - Washer/Dryer (not included)
WC - Water Closet
HS - Household Shelter
DBIST - Distribution Board/Storage
RC - Reinforced Concrete

F - Fridge (not included)
AC - Air-Conditioner

Area includes air-conditioner (AC) ledge, balcony and strata void area where applicable. The plans are subject to change as may be approved by relevant authorities. All floor plans are approximate measurements only and are subject to government re-survey. The balcony shall not be enclosed unless with the approved balcony screen. For an illustration of the approved balcony screen, please refer to the diagram annexed hereto as 'Annexure A'.



Keyplan is not drawn to scale