

1 - BEDROOM

TYPE A

49 SQM / 527 SQFT

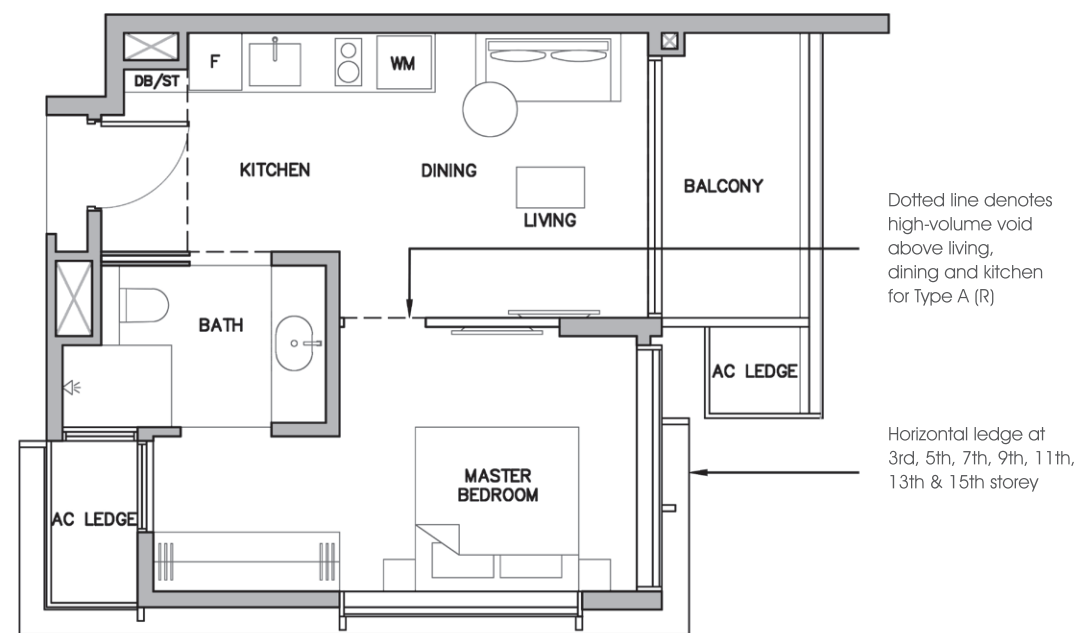
#02 - 04 to #15 - 04

TYPE A (R)

65 SQM / 700 SQFT

#16 - 04

(Inclusive of 16 sqm high-volume void)



2 - BEDROOM

TYPE B1

66 SQM / 710 SQFT

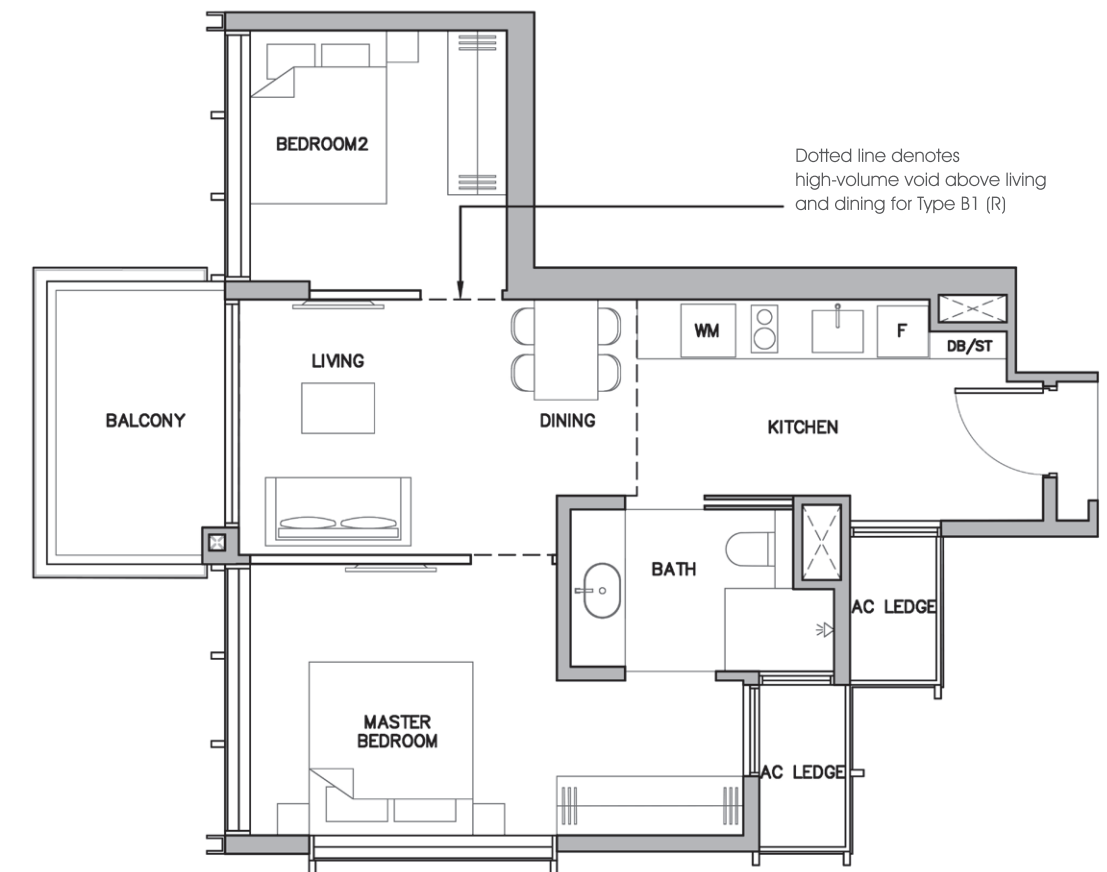
#02 - 01 to #15 - 01

TYPE B1 (R)

79 SQM / 850 SQFT

#16 - 01

(Inclusive of 13 sqm high-volume void)

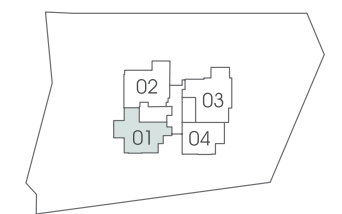


Key plan is not drawn to scale



LEGEND:
 F - Fridge
 WM - Washer cum Dryer
 DB - Distribution Board
 ST - Storage

Area includes air-con (a/c) ledge, private enclosed space (PES), balcony and strata void area where applicable. Please refer to the key plan of the unit plans shown in the brochure for orientation. The plans are subject to change as may be approved by relevant authorities. All floor plans are approximate measurements only and are subject to government re-survey. The balcony shall not be enclosed unless with the approved balcony screen. Please refer to the drawing titled approved typical balcony screen design.



Key plan is not drawn to scale



LEGEND:
 F - Fridge
 WM - Washer cum Dryer
 DB - Distribution Board
 ST - Storage

Area includes air-con (a/c) ledge, private enclosed space (PES), balcony and strata void area where applicable. Please refer to the key plan of the unit plans shown in the brochure for orientation. The plans are subject to change as may be approved by relevant authorities. All floor plans are approximate measurements only and are subject to government re-survey. The balcony shall not be enclosed unless with the approved balcony screen. Please refer to the drawing titled approved typical balcony screen design.

2 - BEDROOM PREMIUM

TYPE B2

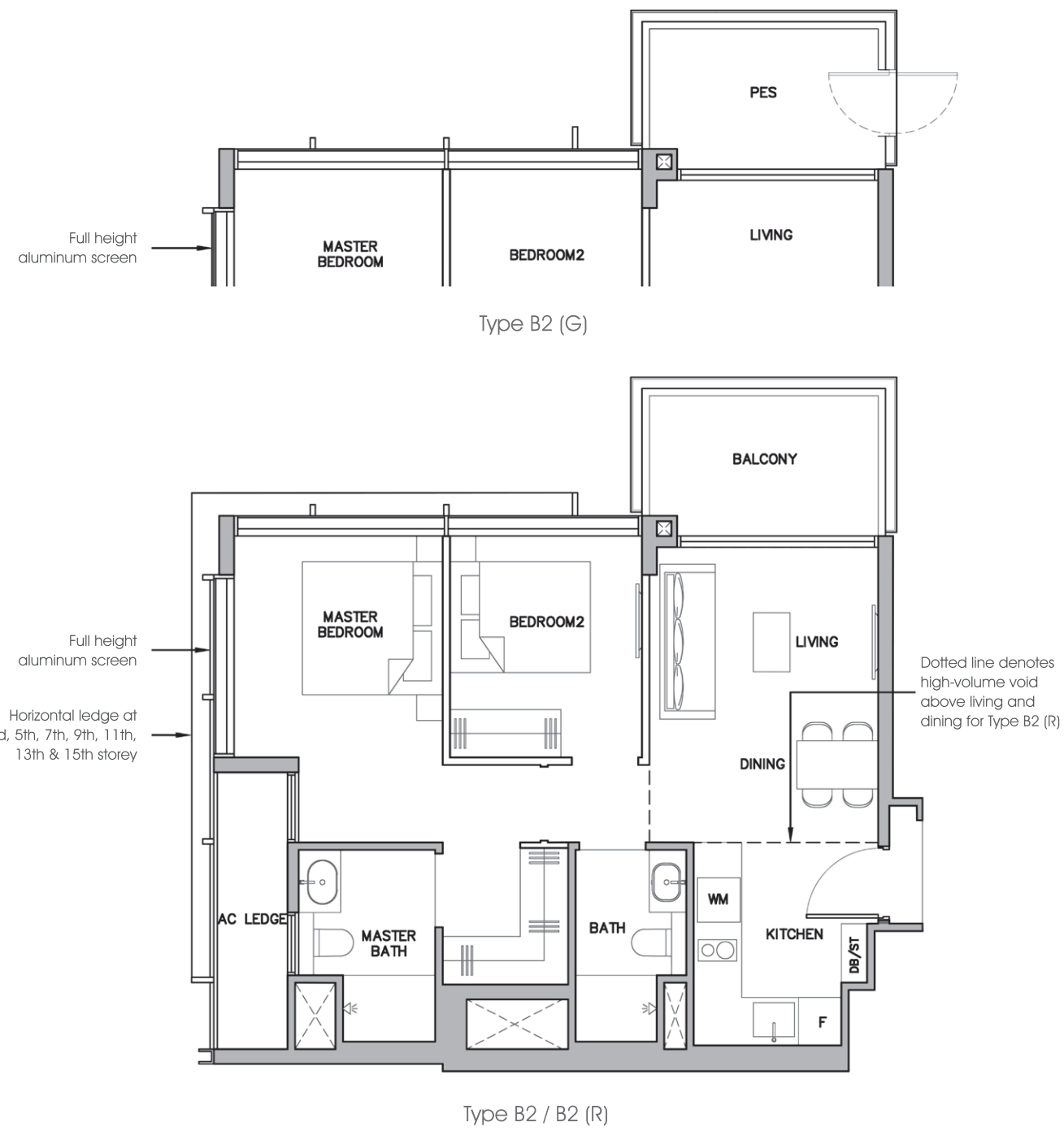
71 SQM / 764 SQFT
#03 - 02 to #15 - 02

TYPE B2 (G)

71 SQM / 764 SQFT
#02 - 02

TYPE B2 (R)

86 SQM / 926 SQFT
#16 - 02
(Inclusive of 15 sqm high-volume void)



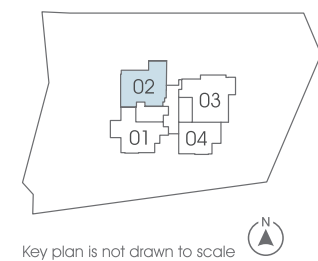
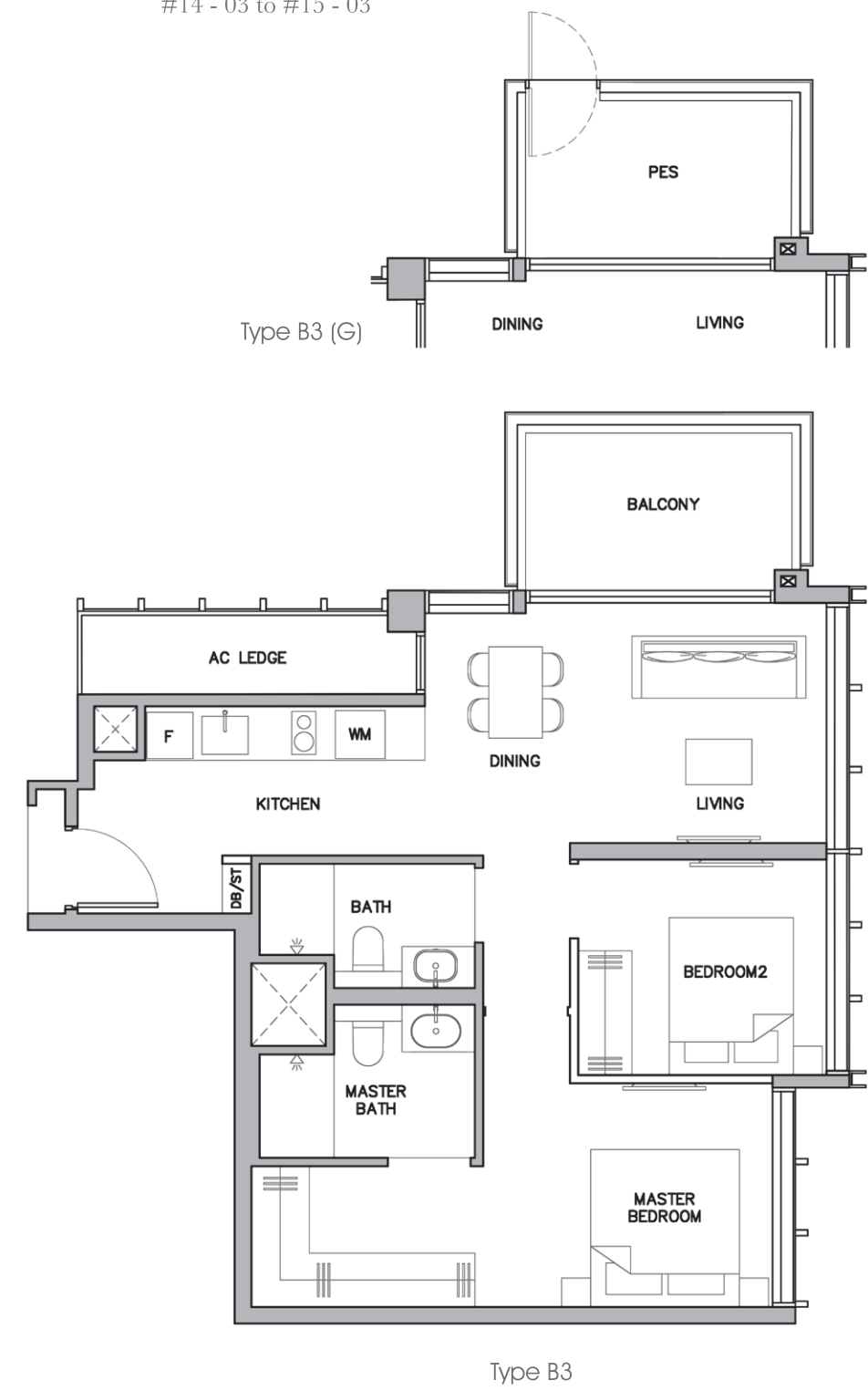
2 - BEDROOM SUITE

TYPE B3

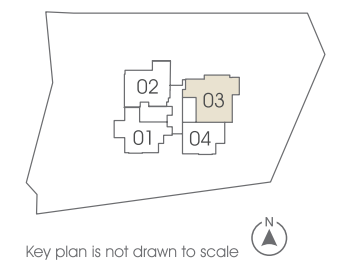
76 SQM / 818 SQFT
#03 - 03
#06 - 03 to #07 - 03
#10 - 03 to #11 - 03
#14 - 03 to #15 - 03

TYPE B3 (G)

76 SQM / 818 SQFT
#02 - 03



LEGEND:
F - Fridge
WM - Washer cum Dryer
DB - Distribution Board
ST - Storage



LEGEND:
F - Fridge
WM - Washer cum Dryer
DB - Distribution Board
ST - Storage

Area includes air-con (a/c) ledge, private enclosed space (PES), balcony and strata void area where applicable. Please refer to the key plan of the unit plans shown in the brochure for orientation. The plans are subject to change as may be approved by relevant authorities. All floor plans are approximate measurements only and are subject to government re-survey. The balcony shall not be enclosed unless with the approved balcony screen. Please refer to the drawing titled approved typical balcony screen design.

Area includes air-con (a/c) ledge, private enclosed space (PES), balcony and strata void area where applicable. Please refer to the key plan of the unit plans shown in the brochure for orientation. The plans are subject to change as may be approved by relevant authorities. All floor plans are approximate measurements only and are subject to government re-survey. The balcony shall not be enclosed unless with the approved balcony screen. Please refer to the drawing titled approved typical balcony screen design.

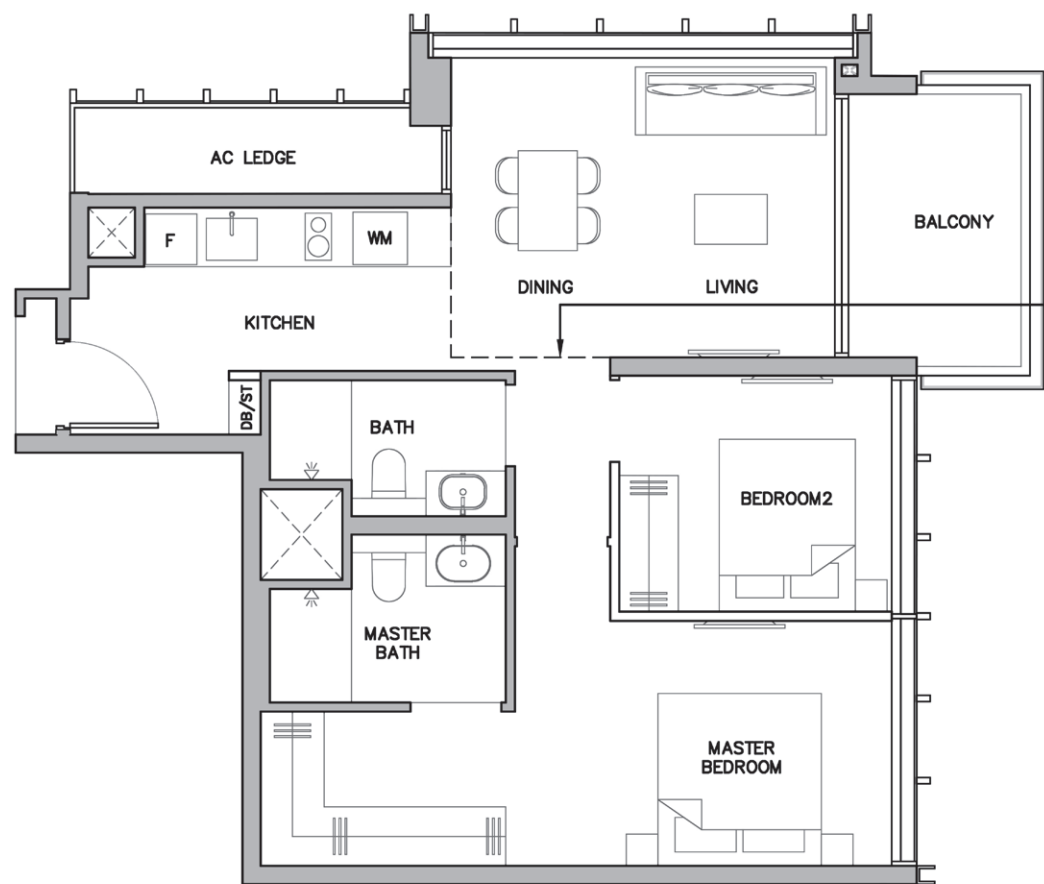
2 - BEDROOM SUITE

TYPE B4

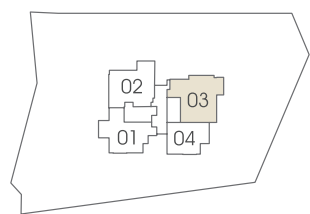
77 SQM / 829 SQFT
 #04 - 03 to #05 - 03
 #08 - 03 to #09 - 03
 #12 - 03 to #13 - 03

TYPE B4 (R)

94 SQM / 1,012 SQFT
 #16- 03
 (Inclusive of 17 sqm high-volume void)



Dotted line denotes high-volume void above living and dining for Type B4 (R)



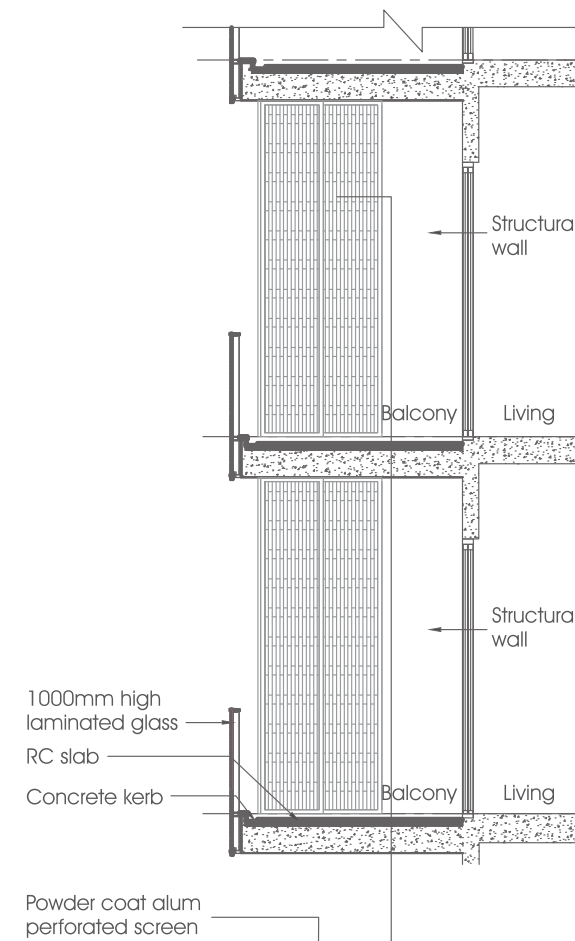
Key plan is not drawn to scale

LEGEND:
 F - Fridge
 WM - Washer cum Dryer
 DB - Distribution Board
 ST - Storage

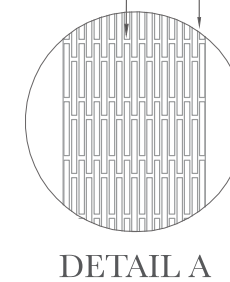
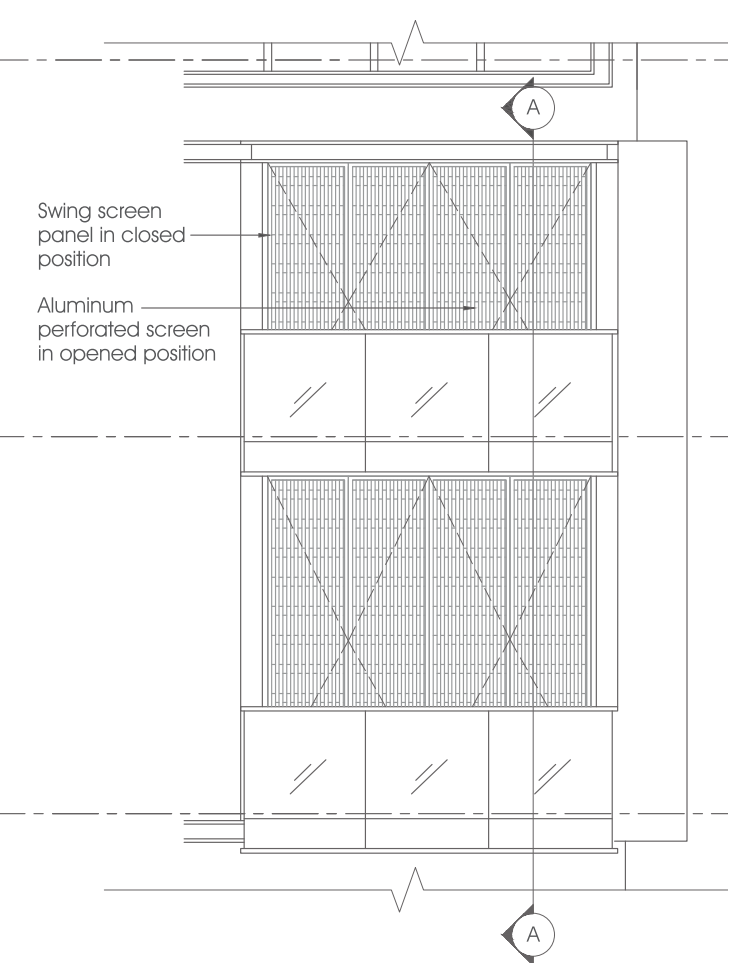
Area includes air-con (a/c) ledge, private enclosed space (PES), balcony and strata void area where applicable. Please refer to the key plan of the unit plans shown in the brochure for orientation. The plans are subject to change as may be approved by relevant authorities. All floor plans are approximate measurements only and are subject to government re-survey. The balcony shall not be enclosed unless with the approved balcony screen. Please refer to the drawing titled approved typical balcony screen design.

APPROVED TYPICAL BALCONY SCREEN DESIGN

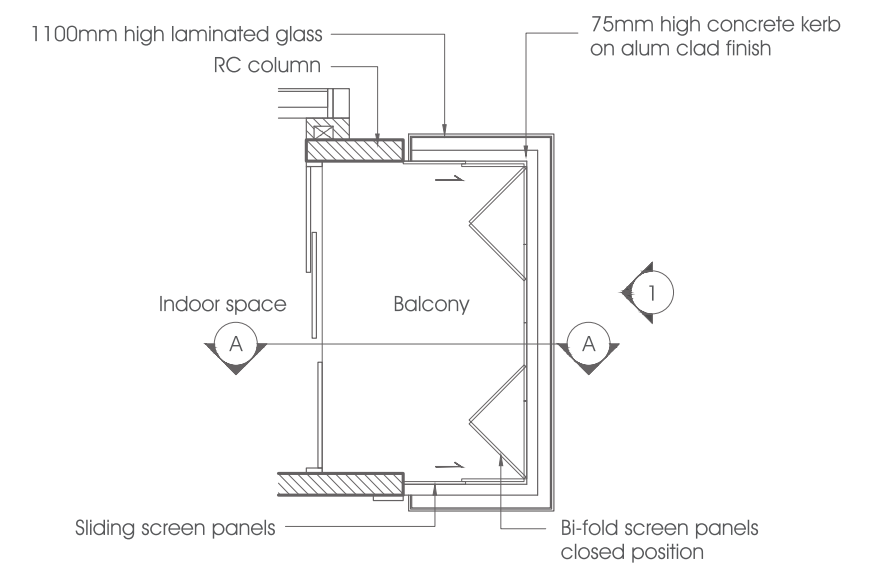
SECTION A-A
 (Typical section of balcony with screen)



ELEVATION 1
 OF BALCONY SCREEN



TYPICAL PLAN OF BALCONY SCREEN



BALCONY SCREEN NOTICE

- The balcony shall not be enclosed unless with the approved balcony screen;
- The proposed balcony screen allows for natural ventilation within the balcony at all times; and
- The proposed balcony screen is capable of being drawn open or retracted fully.
- The balcony screen will NOT be provided in the depicted units. Only partial balcony screen will be shown. The purchasers will have to bear the costs of installing the balcony screen if they wish to, after taking over their respective units.

BP No.: A1805-0001-2018-BP01
 BP Approval Date: 04 July 2019

BP No.: A1805-0001-2018-BP02
 BP Approval Date: 30 September 2019