

# TYPE B-G

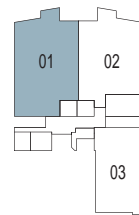
4+1 Bdrm  
118 sqm / 1270 sqft

#01-01



## UNIT HIGHLIGHTS

- 4.3M Floor-to-Floor Height
- Direct Access to Pool and Pavilion
- Direct Access to Communal Areas



KEY PLAN NOT TO SCALE



Artist's impression only

TAILORED LIVING DRIVEN BY DESIGN





# TYPE B

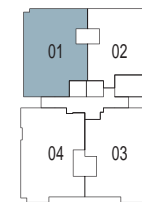
4 Bdrm  
100 sqm / 1076 sqft

#02-01  
#03-01  
#04-01



## UNIT HIGHLIGHTS

- 3.5M Floor-to-Floor Height
- Swimming Pool View
- Current Unblocked View to CBD for level 4 unit



KEY PLAN NOT TO SCALE

PURE LUXURY



# TYPE A

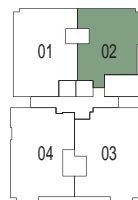
3 Bdrm  
81 sqm / 872 sqft

#02-02  
#03-02  
#04-02



## UNIT HIGHLIGHTS

- 3.5M Floor-to-Floor Height
- Swimming Pool View
- Current Unblocked View to the east for level 4 unit



KEY PLAN NOT TO SCALE



Artist's impression only

A PLACE LIKE NO OTHER

# TYPE C

4 Bdrm  
105 sqm / 1130 sqft

#02-03  
#03-03  
#04-03



## UNIT HIGHLIGHTS

- 3.5M Floor-to-Floor Height
- Greenery & Green roofs View
- Current Unblocked View to the east for level 4 unit



KEY PLAN NOT TO SCALE



# TYPE D

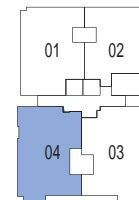
4 Bdrm  
105 sqm / 1130 sqft

#02-04  
#03-04  
#04-04



## UNIT HIGHLIGHTS

- 3.5M Floor-to-Floor Height
- Greenery & Green roofs View
- Current Unblocked View to the city for level 4 unit

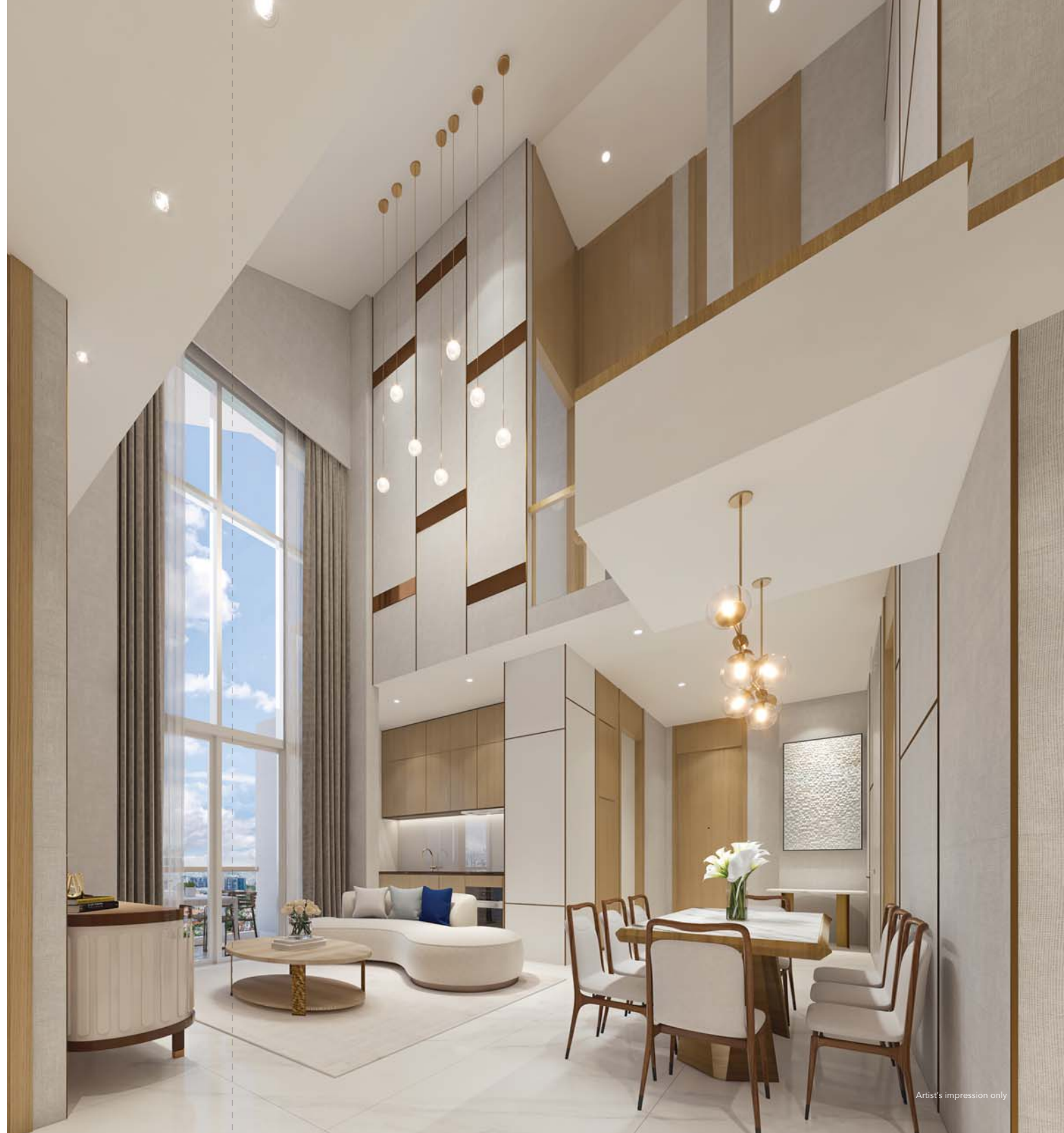


KEY PLAN NOT TO SCALE



## PENTHOUSE

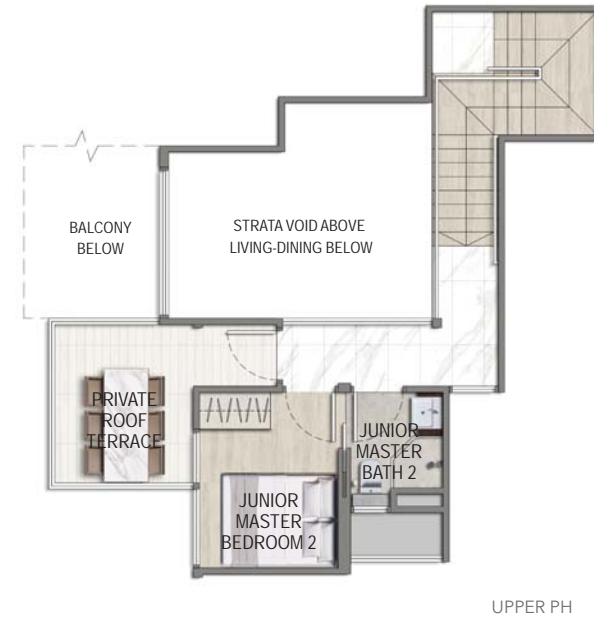
Ample natural light and ventilation, these double-height ceiling penthouses offer the perfect venue for hosting get-together and family events as well as unobstructed views to soothe your soul, an ultimate luxury living.



# TYPE B-PH

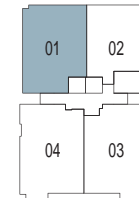
5 Bdrm  
151 sqm / 1625 sqft

#05-01



## UNIT HIGHLIGHTS

- 3.5M Floor-to-Floor Height
- 7M High Ceiling for Living & Dining Area
- Swimming Pool View
- Current Unblocked View to CBD



KEY PLAN NOT TO SCALE



# TYPE A-PH

4 Bdrm  
129 sqm / 1389 sqft

#05-02



## UNIT HIGHLIGHTS

- 3.5M Floor-to-Floor Height
- 7M High Ceiling for Living & Dining Area
- Swimming Pool View
- Current Unblocked View to the East



KEY PLAN NOT TO SCALE



# TYPE C-PH

5 Bdrm  
153 sqm / 1647 sqft

#05-03



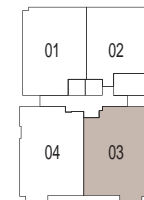
LOWER PH



UPPER PH

## UNIT HIGHLIGHTS

- 3.5M Floor-to-Floor Height
- 7M High Ceiling for Living & Dining Area
- Greenery & Green roofs View
- Current Unblocked View to the East



KEY PLAN NOT TO SCALE



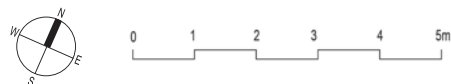
# TYPE D-PH

5 Bdrm  
156 sqm / 1679 sqft

#05-04



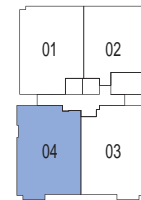
LOWER PH



UPPER PH

## UNIT HIGHLIGHTS

- 3.5M Floor-to-Floor Height
- 7M High Ceiling for Living & Dining Area
- Greenery & Green roofs View
- Current Unblocked View to CBD



KEY PLAN NOT TO SCALE

