

Interactive Diagrammatic Chart

To Use, Simply Click on the Desired Unit Type To View the Floor Plans

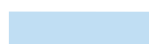
To Return to this Main Schematic Page, Simply Click on the Site Plan at the Bottom of the Floor Plan Page

STOREY/UNIT	1	2	3	4	5	6	7	8	9
30	PLH-1			PLH-3			PLH-2		
29	2A-2	3C	3C	1A	2C	1A	3A	2A-1	2A-1
28	2A-1	4A-4	3C	1A	2C	1A	3A	4A-3	2A-1
27	2A-1	3C	3C	1A	2C	1A	3A	2A-1	2A-1
26	2A-1	4A-2	3C	1A	2C	1A	3A	4A-1	2A-2
25	2A-1	2B-1	3C	1A	2C	1A	3A	2B-1	2A-1
24	SWIMMING POOL								
23	2A-1	2B-1	3C	1A	2C	1A	3A	2B-1	2A-1
22	2A-1	2B-1	3C	1A	2C	1A	3A	2B-1	2A-1
21	2A-1	2B-2	3C	1A	2C	1A	3A	2B-1	2A-2
20	2A-1	2B-1	3C	1A	2C	1A	3A	2B-1	2A-1
19	2A-1	2B-1	3C	1A	2C	1A	3A	2B-1	2A-1
18	2A-2	2B-1	3C	1A	2C	1A	3A	2B-2	2A-1
17	2A-1	2B-1	3C	1A	2C	1A	3A	2B-1	2A-1
16	2A-1	2B-1	3C	1A	2C	1A	3A	2B-1	2A-1
15	2A-1	2B-2	3C	1A	2C	1A	3A	2B-1	2A-2
14	2A-1	2B-1	3C	1A	2C	1A	3A	2B-1	2A-1
13	2A-1	2B-1	3C	1A	2C	1A	3A	2B-1	2A-1
12	2A-2	2B-1	3C	1A	2C	1A	3A	2B-2	2A-1
11	2A-1	2B-1	3C	1A	2C	1A	3A	2B-1	2A-1
10	2A-1	2B-1	3C	1A	2C	1A	3A	2B-1	2A-1
9	2A-1	2B-2	3C	1A	2C	1A	3A	2B-1	2A-2
8	2A-1	2B-1	3C	1A	2C	1A	3A	2B-1	2A-1
7	2A-1	2B-1	3C	1A	2C	1A	3A	2B-1	2A-1
6	2A-1	2B-1		1A	2C	1A		2B-1	2A-1
5	TENNIS COURT								
4				1D	1C	1B		3B	
3				1D	1C	1B		3B	
2	LANDSCAPE DECK								
1	SHOPS								

Legend



1-Bedroom



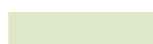
2-Bedroom



2 + Study



Shop



3-Bedroom



3-Bedroom
(Dual Key)



3 + Study + Family
(Maisonette)



Penthouse

TYPE 1A

1 bdrm

48 sq m

#06-03

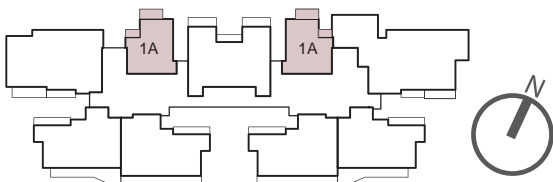
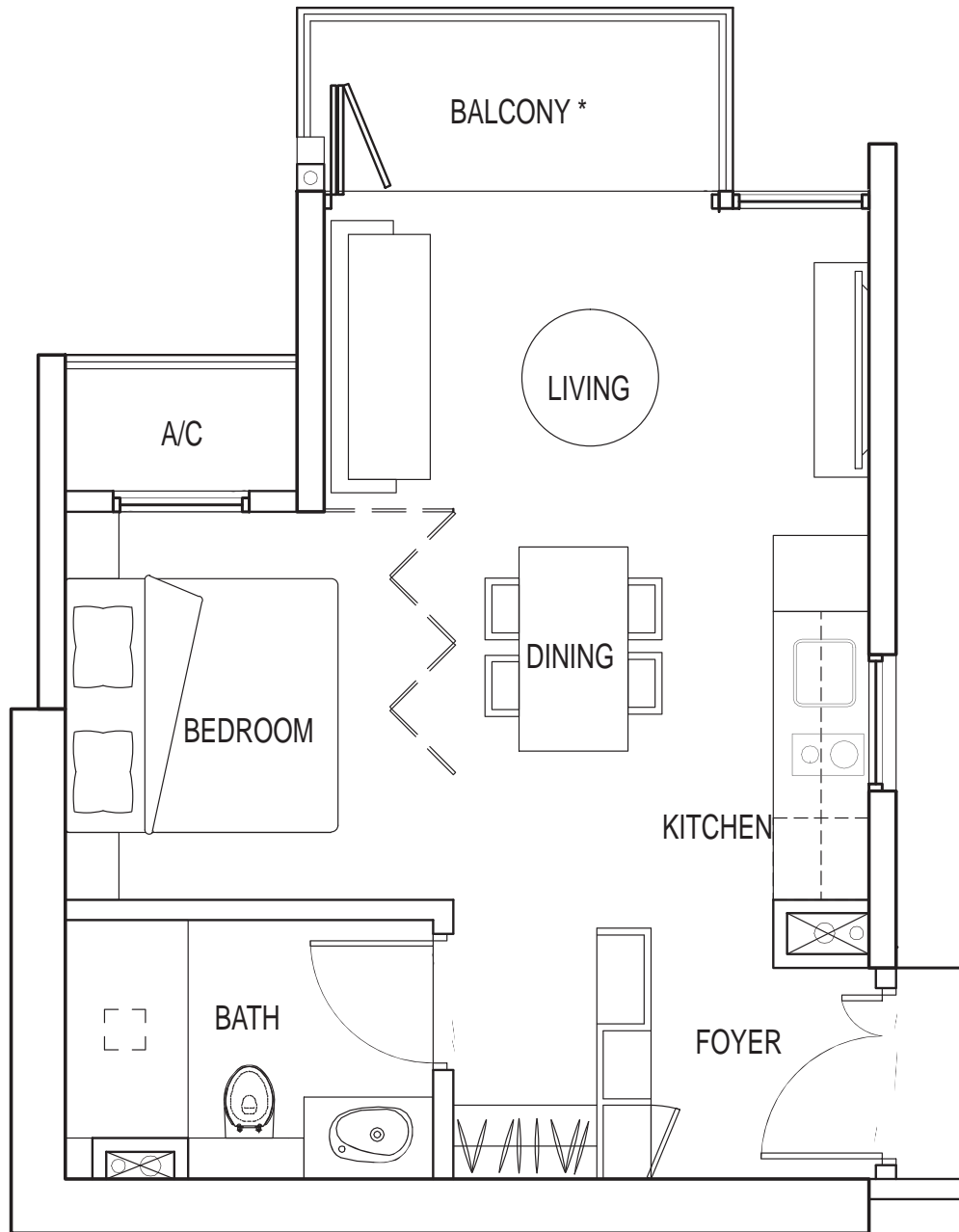
#07-04 – #23-04

#25-04 – #29-04

#06-05

#07-06 – #23-06

#25-06 – #29-06



Note: Unit area includes balcony, yard, AC ledge and/or void where applicable. All plans are subject to amendments as approved by the relevant authorities.

* "The balcony shall not be enclosed. Only approved balcony screens are to be used. For an illustration of the approved balcony screen, please refer to page 33 of this brochure."

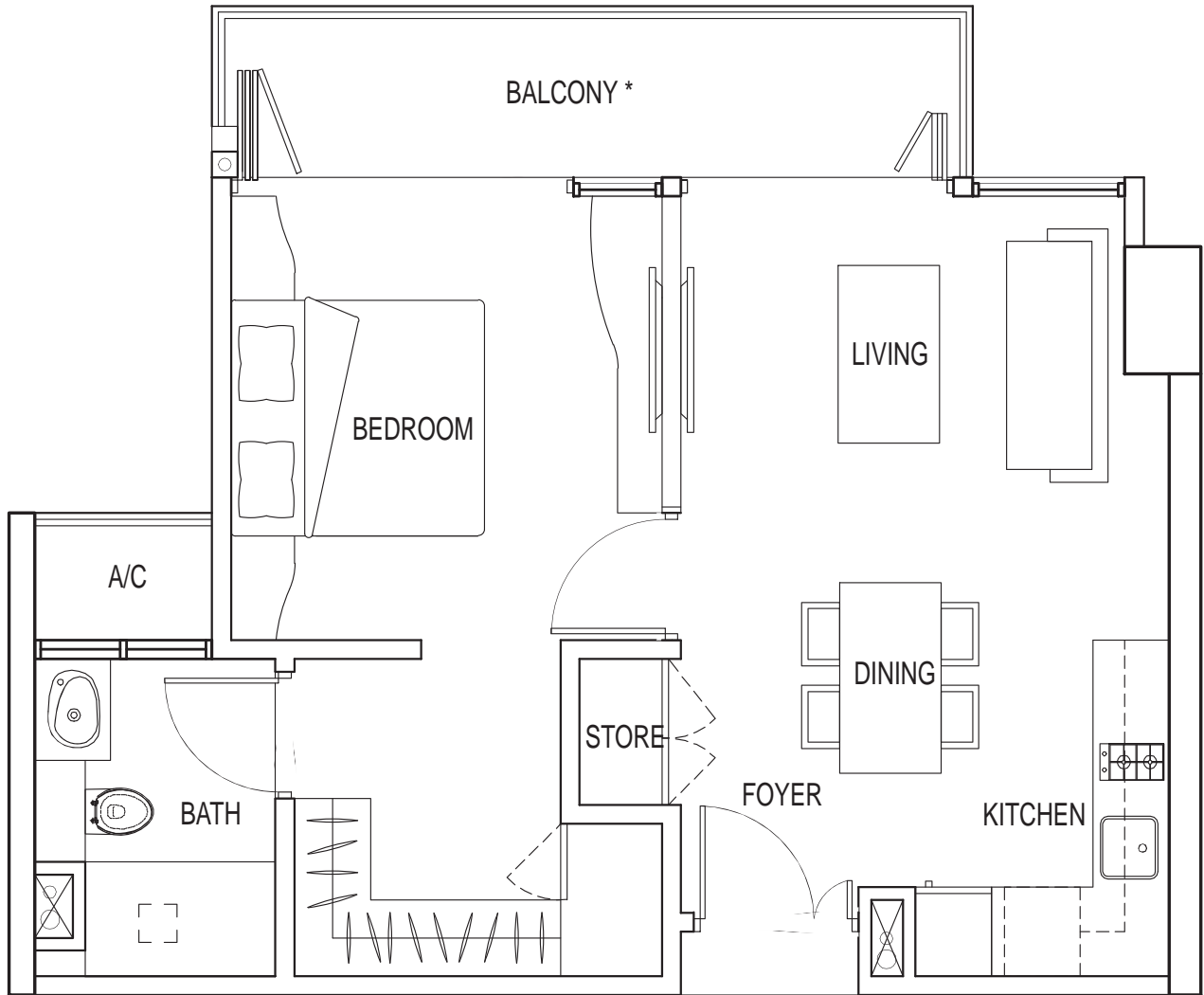
TYPE 1B

1 bdrm

61 sq m

#03-04

#04-04



Note: Unit area includes balcony, yard, AC ledge and/or void where applicable. All plans are subject to amendments as approved by the relevant authorities.

* "The balcony shall not be enclosed. Only approved balcony screens are to be used. For an illustration of the approved balcony screen, please refer to page 33 of this brochure."

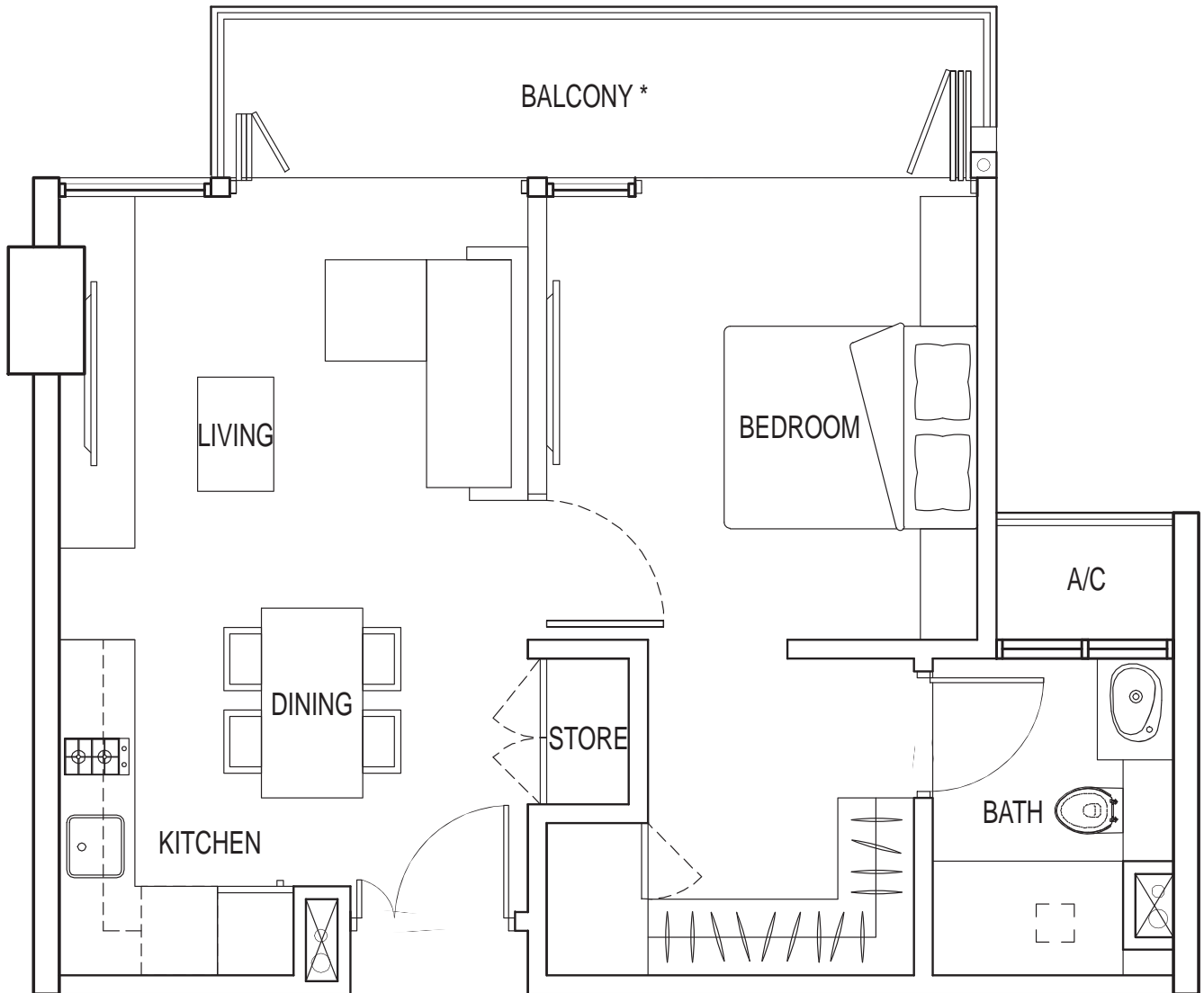
TYPE 1C

1 bdrm

61 sq m

#03-03

#04-03



Note: Unit area includes balcony, yard, AC ledge and/or void where applicable. All plans are subject to amendments as approved by the relevant authorities.

* "The balcony shall not be enclosed. Only approved balcony screens are to be used. For an illustration of the approved balcony screen, please refer to page 33 of this brochure."

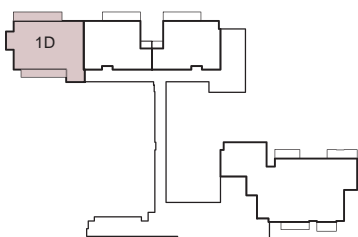
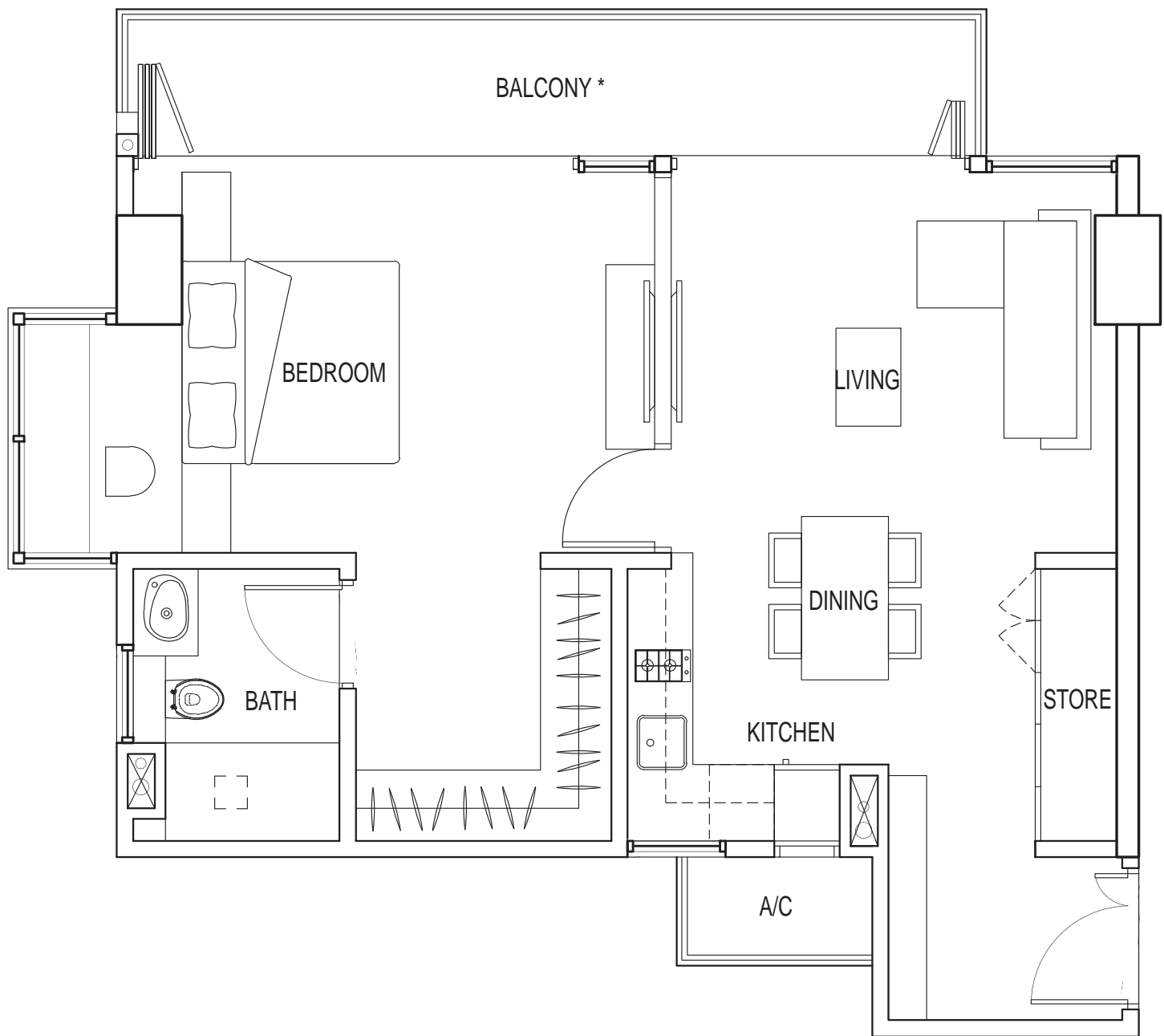
TYPE 1D

1 bdrm

77 sq m

#03-02

#04-02



Note: Unit area includes balcony, yard, AC ledge and/or void where applicable. All plans are subject to amendments as approved by the relevant authorities.
The balcony shall not be enclosed. Only approved balcony screens are to be used. For an illustration of the approved balcony screen, please refer to page 33 of this brochure.

TYPE 2A-1

2 bdrm

93 sq m

#06-01 – #11-01

#13-01 – #17-01

#19-01 – #23-01

#25-01 – #28-01

#06-07

#07-09 – #08-09

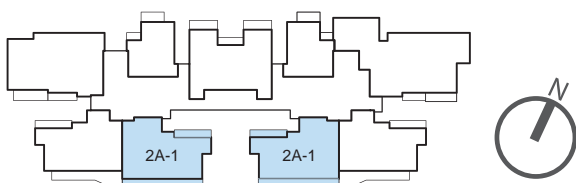
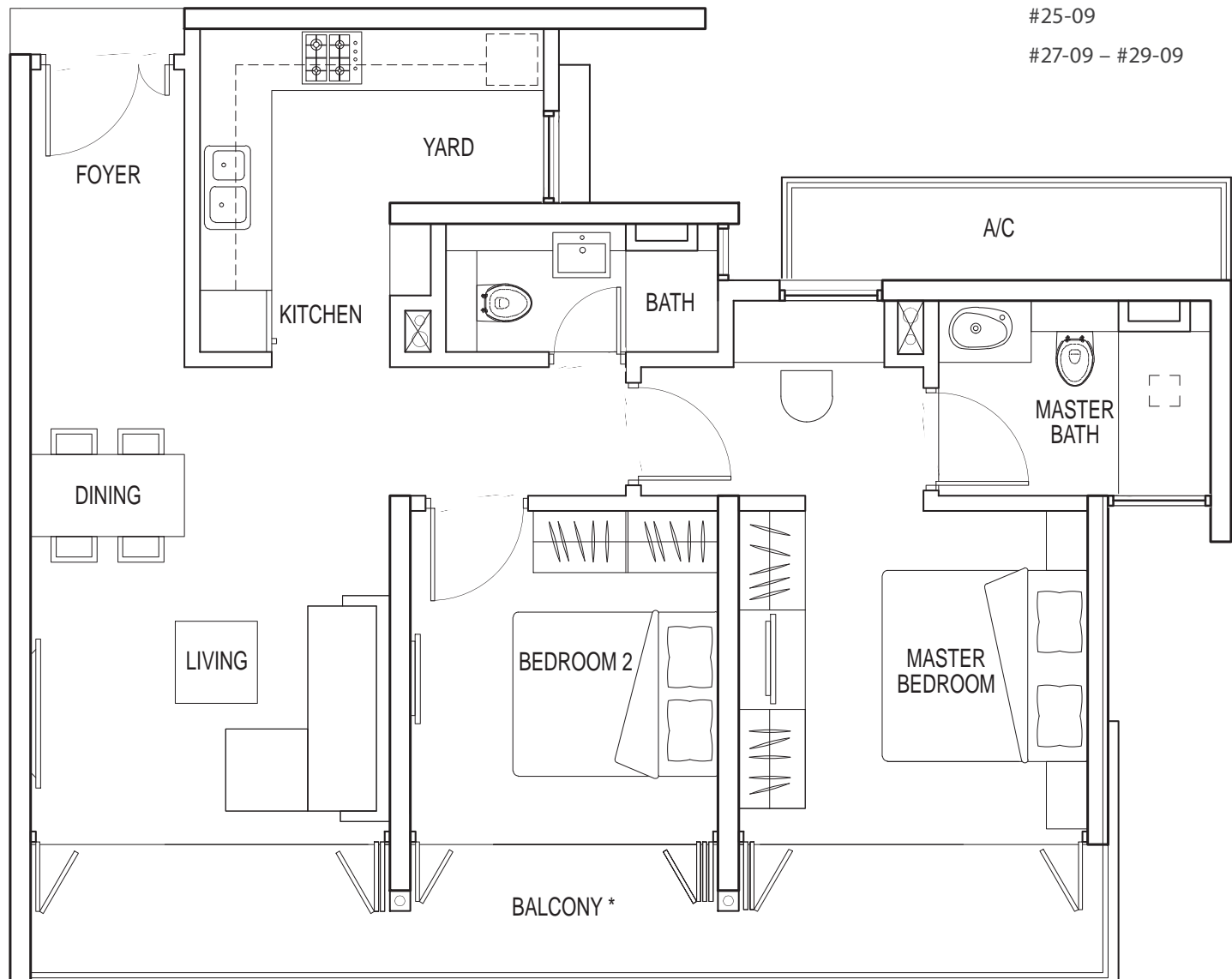
#10-09 – #14-09

#16-09 – #20-09

#22-09 – #23-09

#25-09

#27-09 – #29-09



Note: Unit area includes balcony, yard, AC ledge and/or void where applicable. All plans are subject to amendments as approved by the relevant authorities.

The balcony shall not be enclosed. Only approved balcony screens are to be used. For an illustration of the approved balcony screen, please refer to page 33 of this brochure.

TYPE 2A-2

2 bdrm

101 sq m

#12-01

#18-01

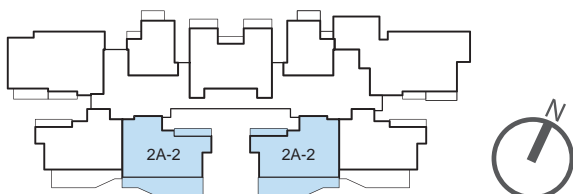
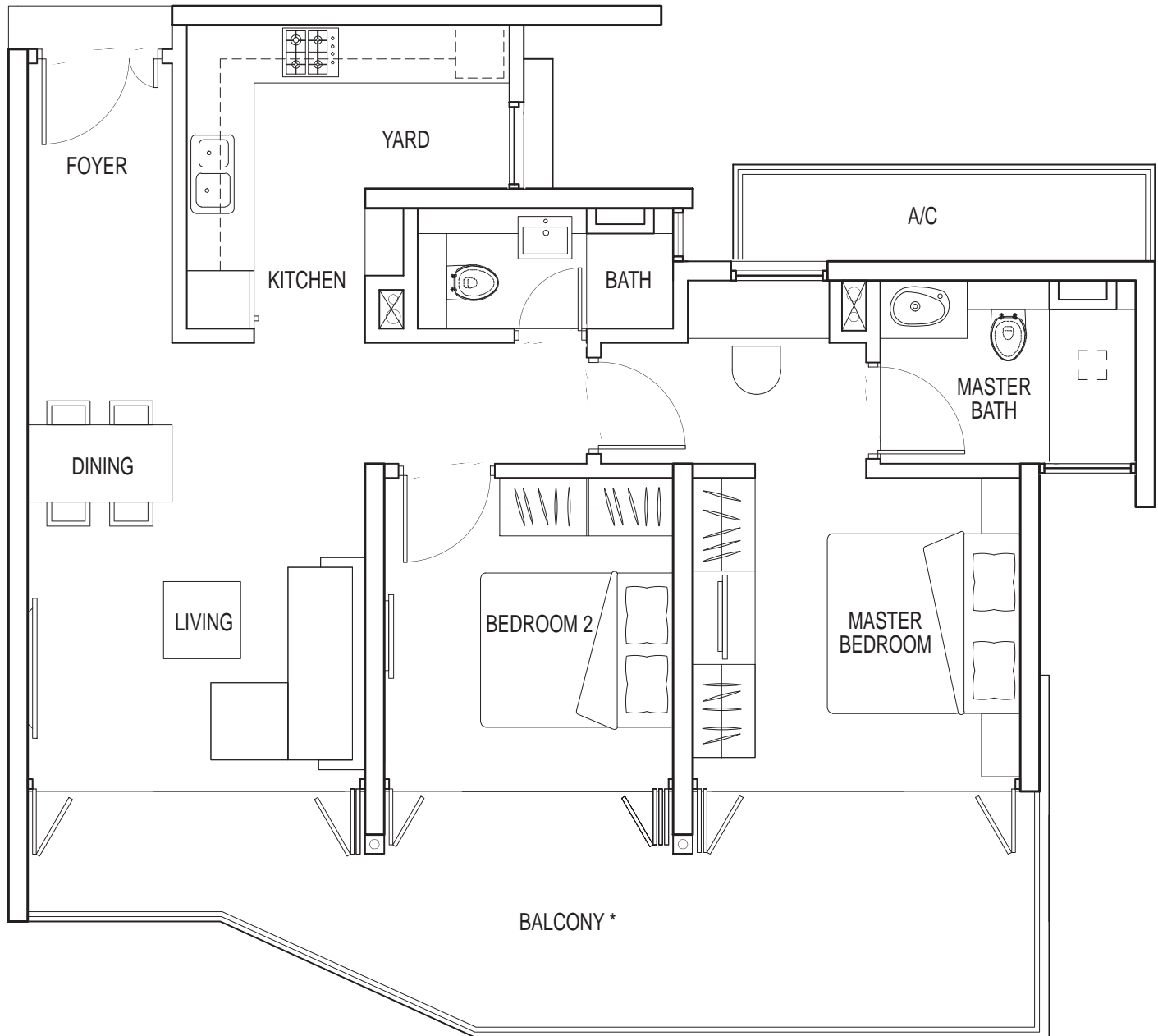
#29-01

#09-09

#15-09

#21-09

#26-09



Note: Unit area includes balcony, yard, AC ledge and/or void where applicable. All plans are subject to amendments as approved by the relevant authorities.
The balcony shall not be enclosed. Only approved balcony screens are to be used. For an illustration of the approved balcony screen, please refer to page 33 of this brochure.

TYPE 2B-1

2 bdrm

89 sq m

#06-02 – #08-02

#10-02 – #14-02

#16-02 – #20-02

#22-02 – #23-02

#25-02

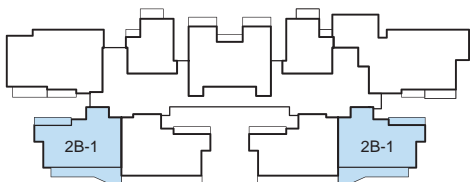
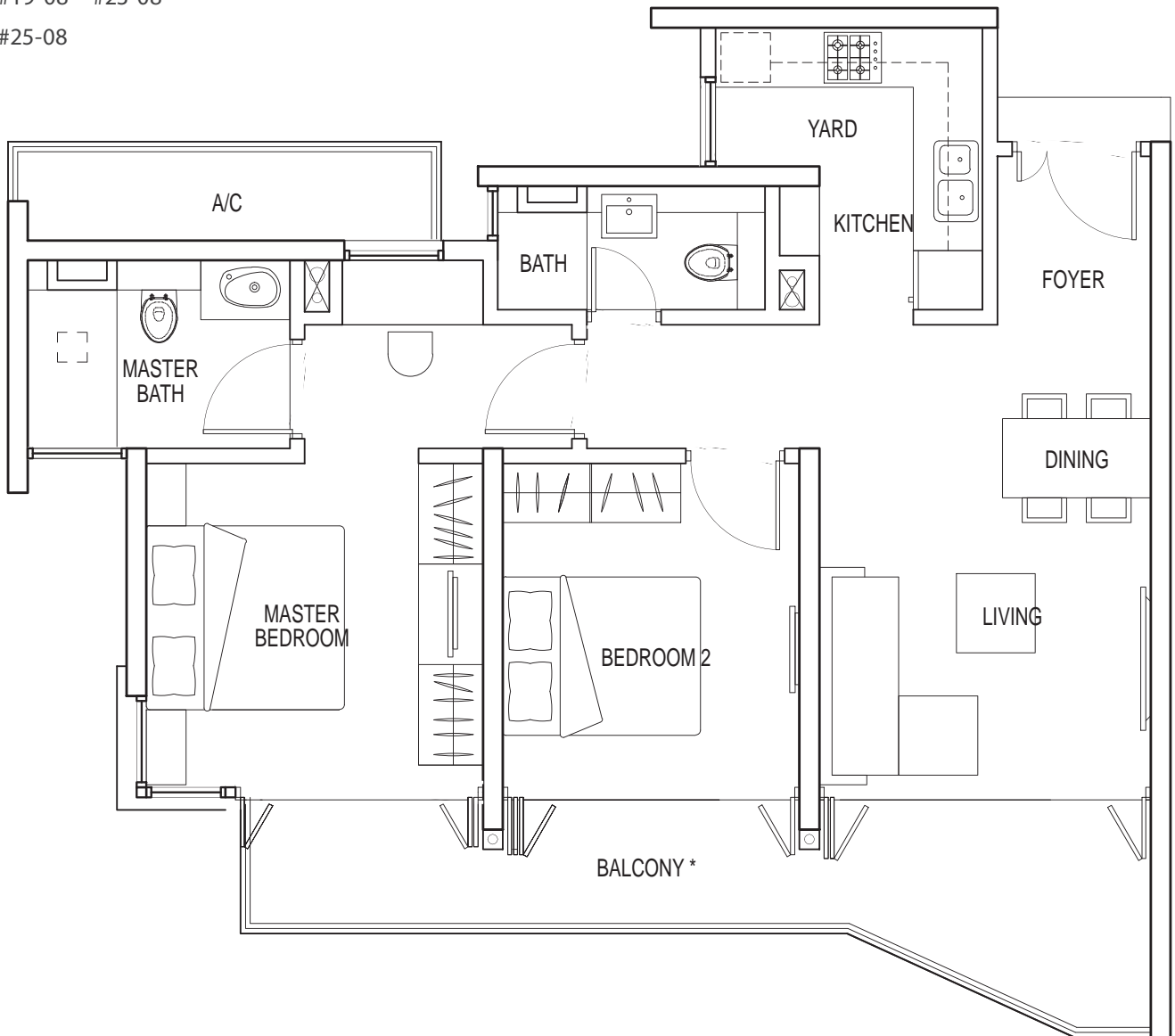
#06-06

#07-08 – #11-08

#13-08 – #17-08

#19-08 – #23-08

#25-08



Note: Unit area includes balcony, yard, AC ledge and/or void where applicable. All plans are subject to amendments as approved by the relevant authorities.

* The balcony shall not be enclosed. Only approved balcony screens are to be used. For an illustration of the approved balcony screen, please refer to page 33 of this brochure."

TYPE 2B-2

2 bdrm

94 sq m

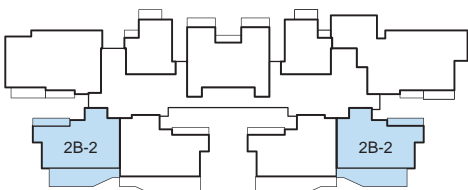
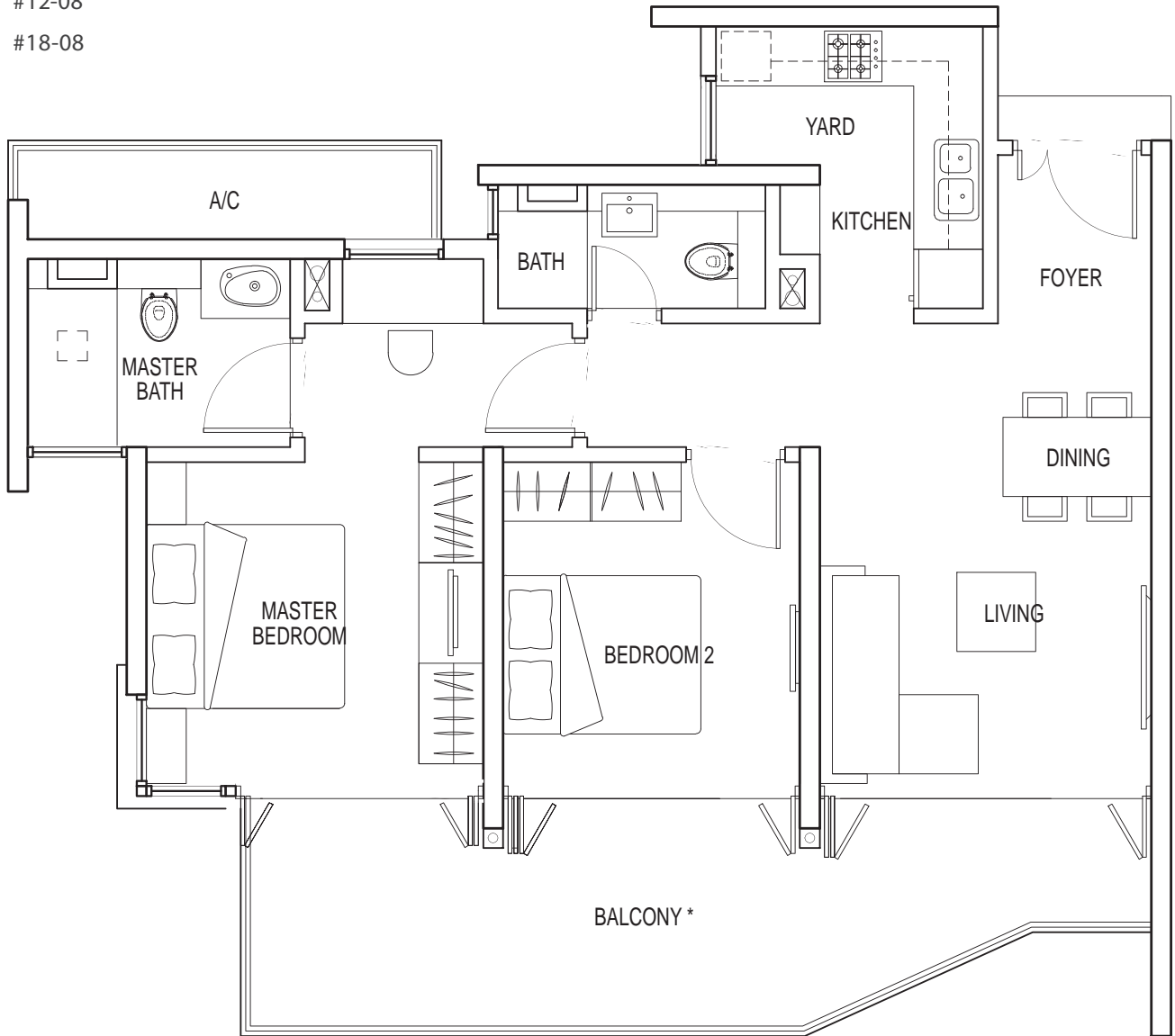
#09-02

#15-02

#21-02

#12-08

#18-08



Note: Unit area includes balcony, yard, AC ledge and/or void where applicable. All plans are subject to amendments as approved by the relevant authorities.

* "The balcony shall not be enclosed. Only approved balcony screens are to be used. For an illustration of the approved balcony screen, please refer to page 33 of this brochure."

TYPE 2C

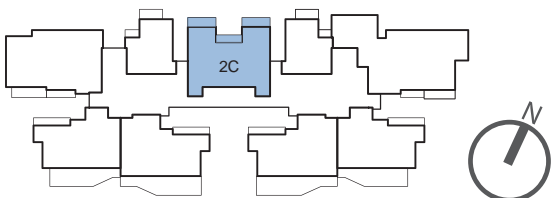
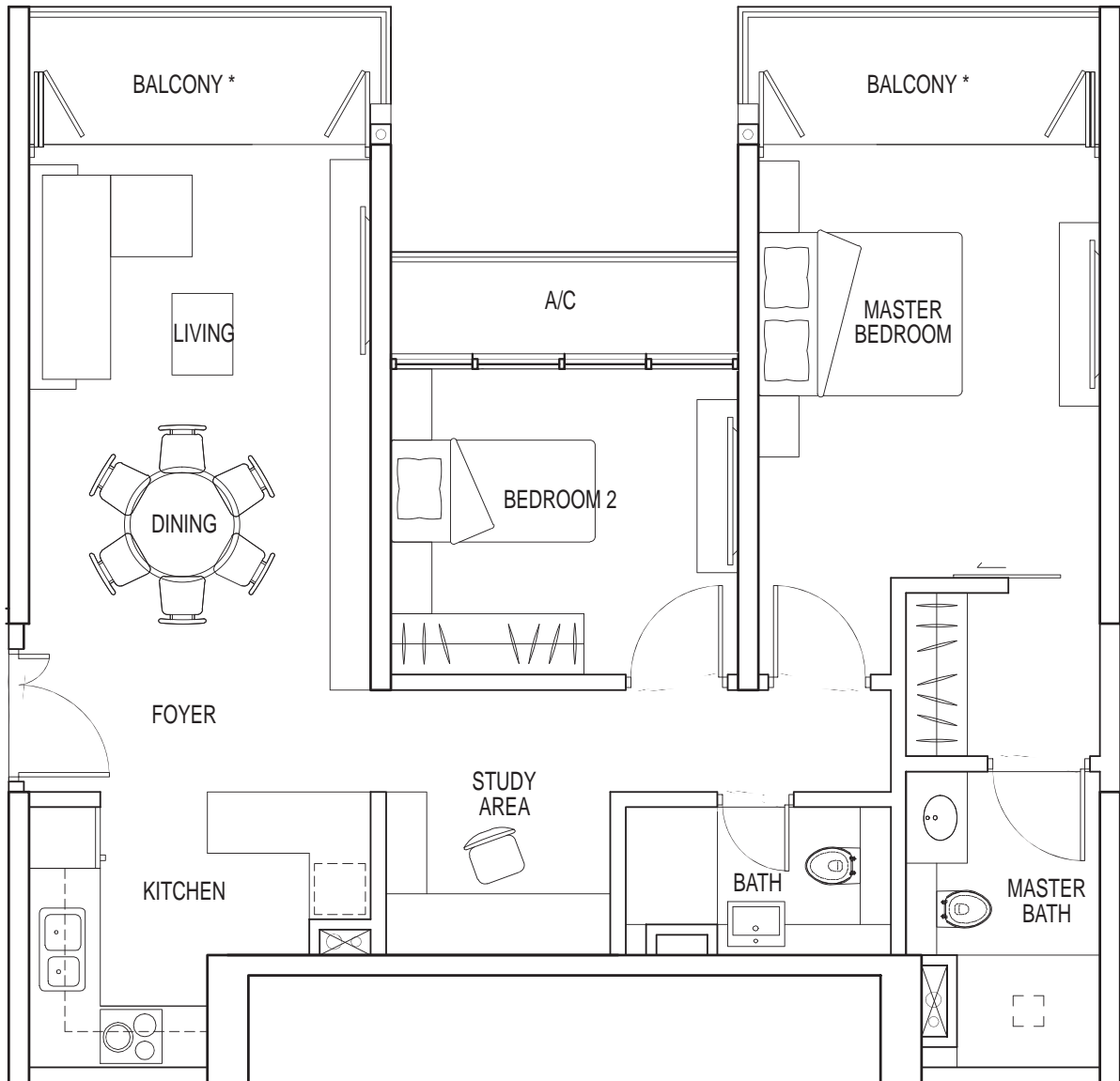
2 + Study

96 sq m

#06-04

#07-05 – #23-05

#25-05 – #29-05



Note: Unit area includes balcony, yard, AC ledge and/or void where applicable. All plans are subject to amendments as approved by the relevant authorities.

* "The balcony shall not be enclosed. Only approved balcony screens are to be used. For an illustration of the approved balcony screen, please refer to page 33 of this brochure."

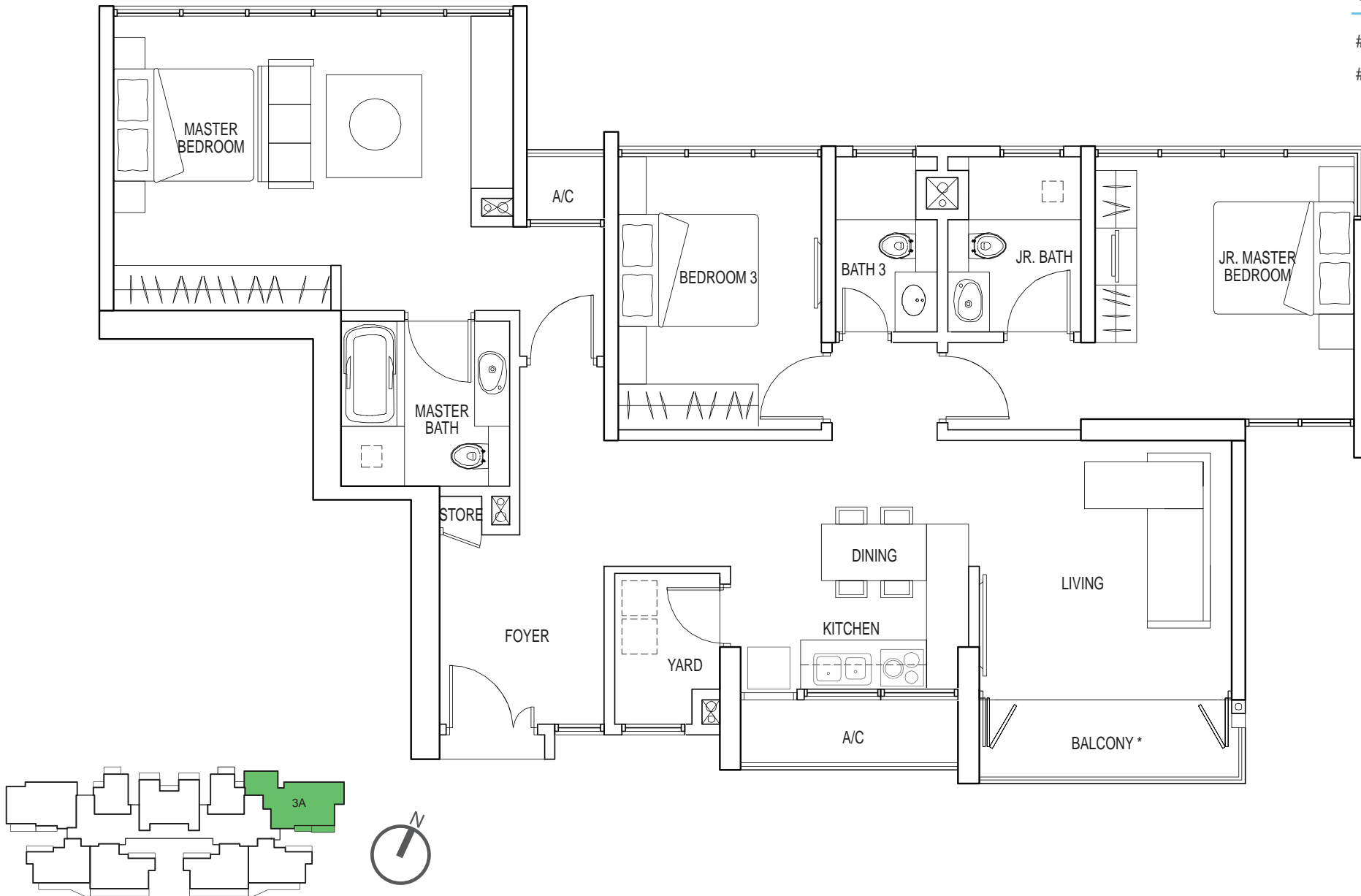
TYPE 3A

3 bdrm (Dual Key)

133 sq m

#07-07 – #23-07

#25-07 – #29-07



Note: Unit area includes balcony, yard, AC ledge and/or void where applicable. All plans are subject to amendments as approved by the relevant authorities.

* "The balcony shall not be enclosed. Only approved balcony screens are to be used. For an illustration of the approved balcony screen, please refer to page 33 of this brochure."

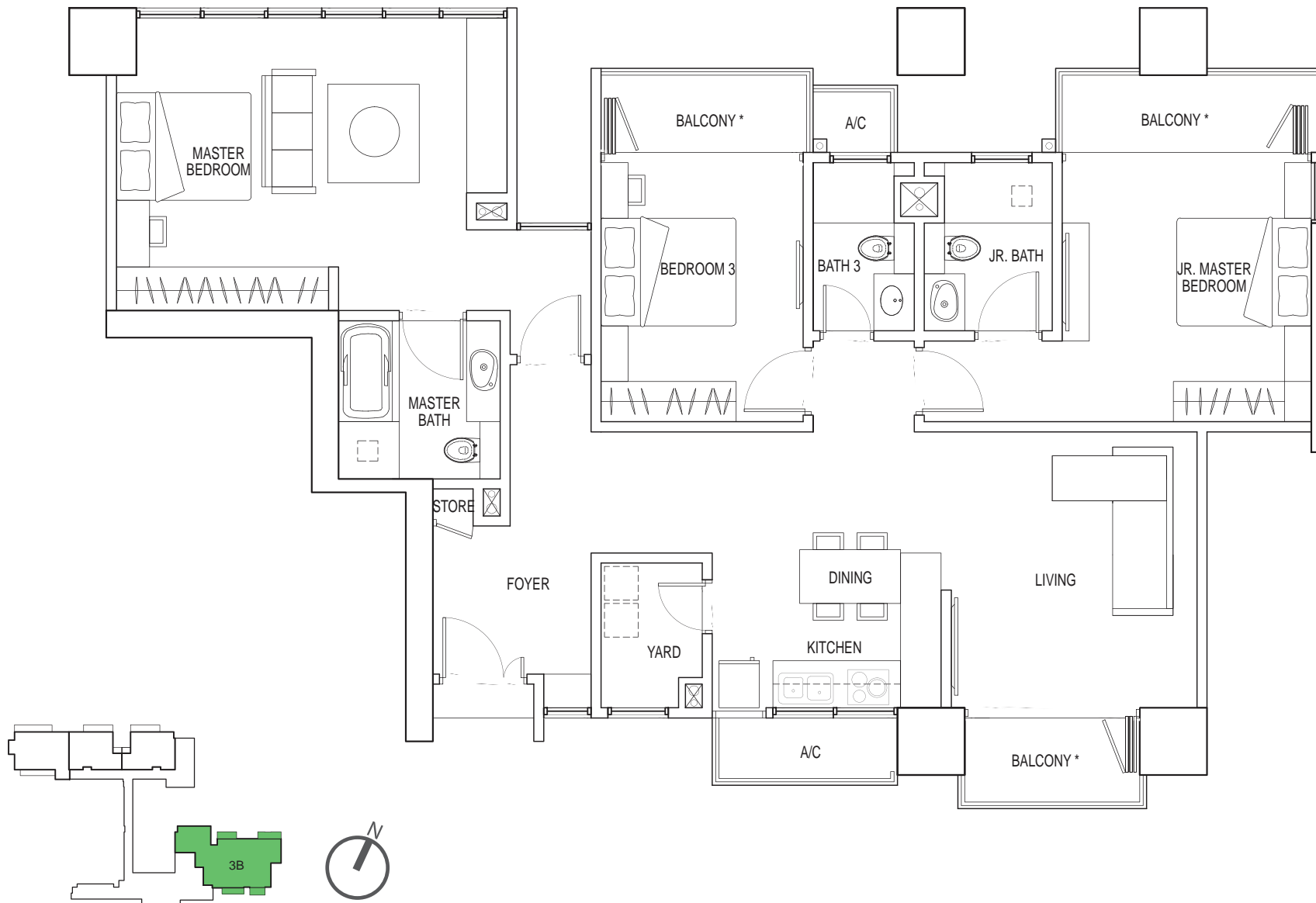
TYPE 3B

3 bdrm (Dual Key)

146 sq m

#03-01

#04-01



Note: Unit area includes balcony, yard, AC ledge and/or void where applicable. All plans are subject to amendments as approved by the relevant authorities.

* "The balcony shall not be enclosed. Only approved balcony screens are to be used. For an illustration of the approved balcony screen, please refer to page 33 of this brochure."

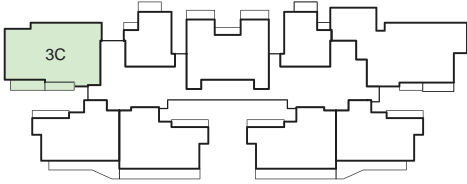
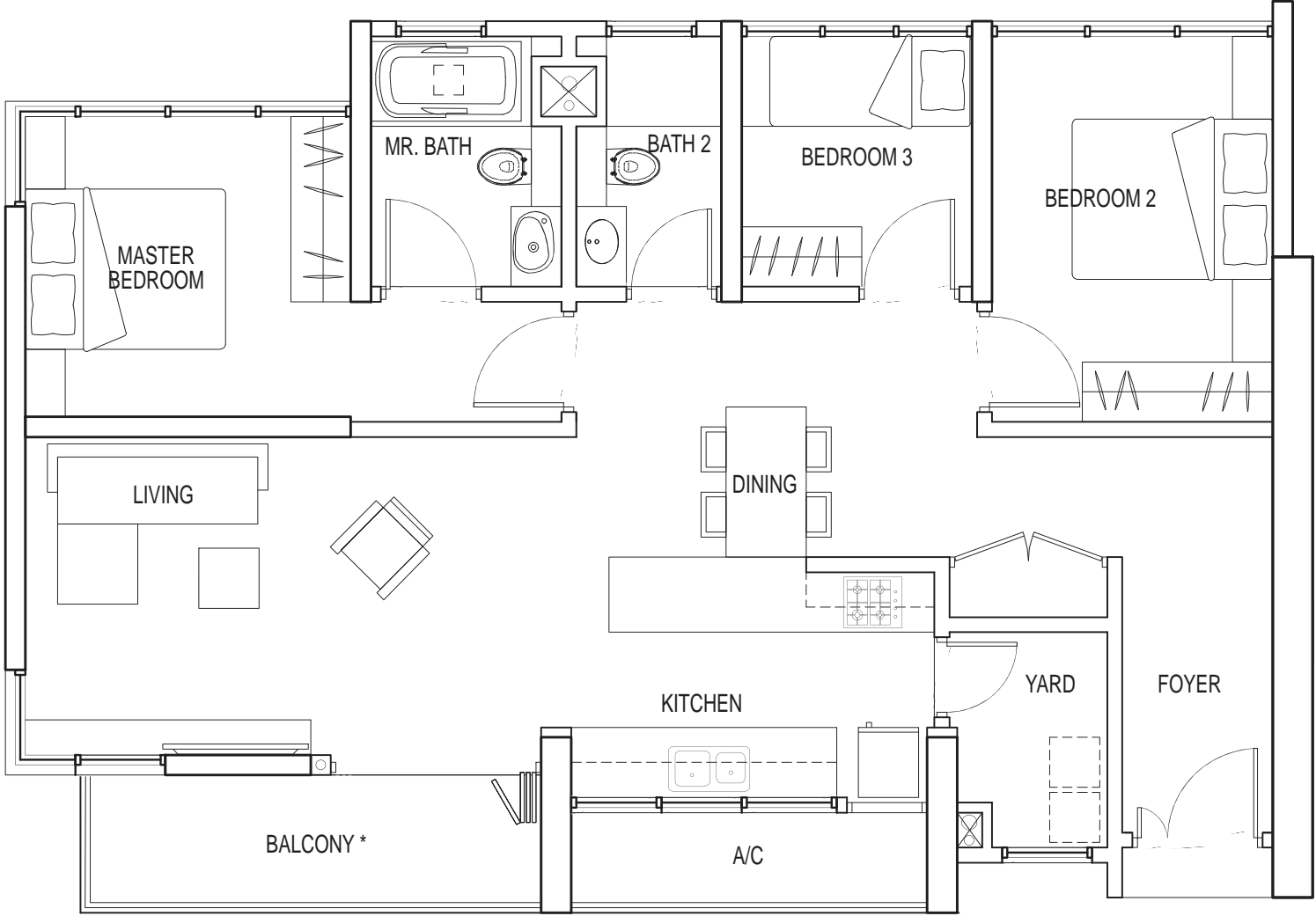
TYPE 3C

3 bdrm

106 sq m

#07-03 – #23-03

#25-03 – #29-03



Note: Unit area includes balcony, yard, AC ledge and/or void where applicable. All plans are subject to amendments as approved by the relevant authorities.

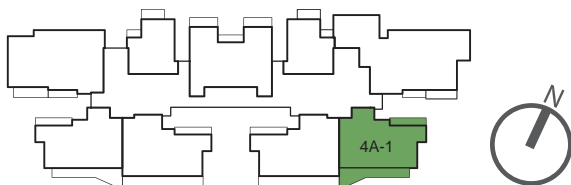
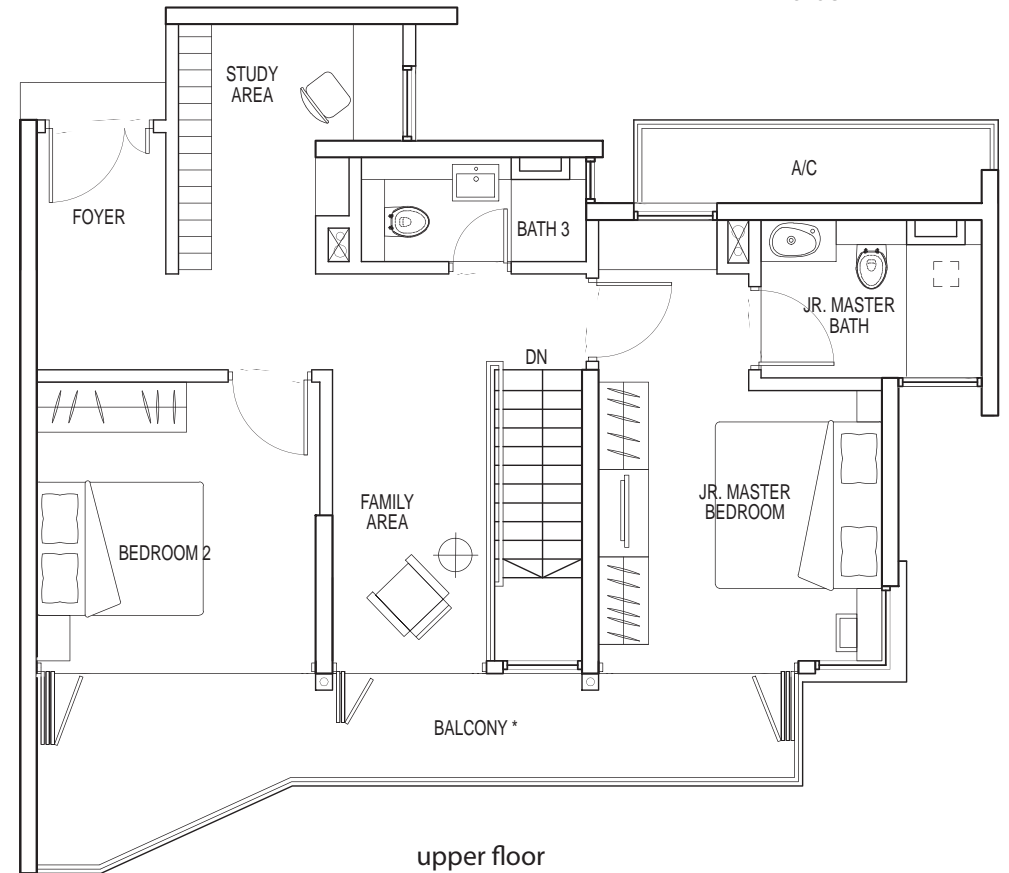
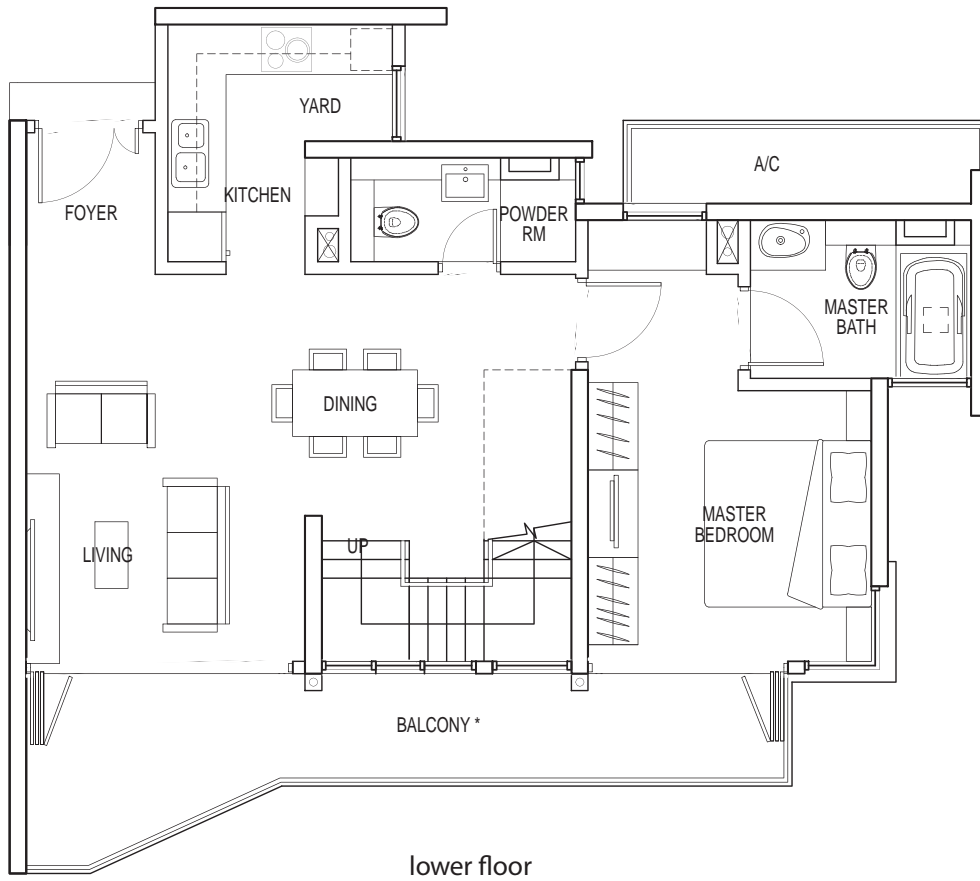
* "The balcony shall not be enclosed. Only approved balcony screens are to be used. For an illustration of the approved balcony screen, please refer to page 33 of this brochure."

TYPE 4A-1

3 + Study + Family

178 sq m

#26-08



Note: Unit area includes balcony, yard, AC ledge and/or void where applicable. All plans are subject to amendments as approved by the relevant authorities.

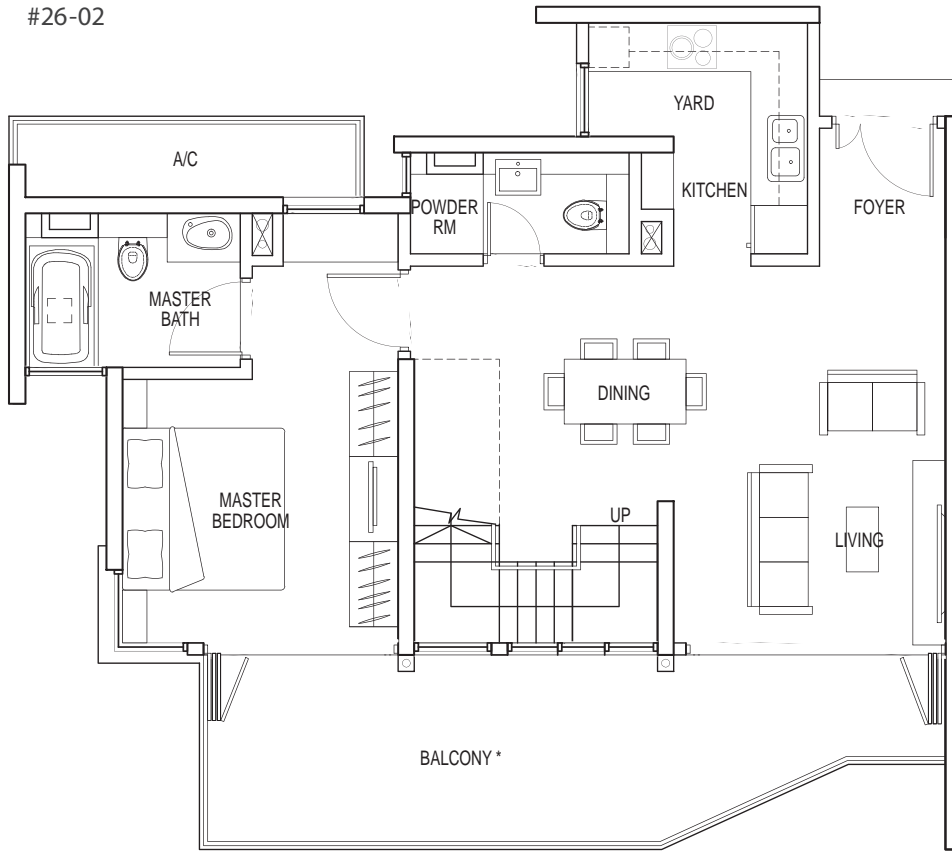
* "The balcony shall not be enclosed. Only approved balcony screens are to be used. For an illustration of the approved balcony screen, please refer to page 33 of this brochure."

TYPE 4A-2

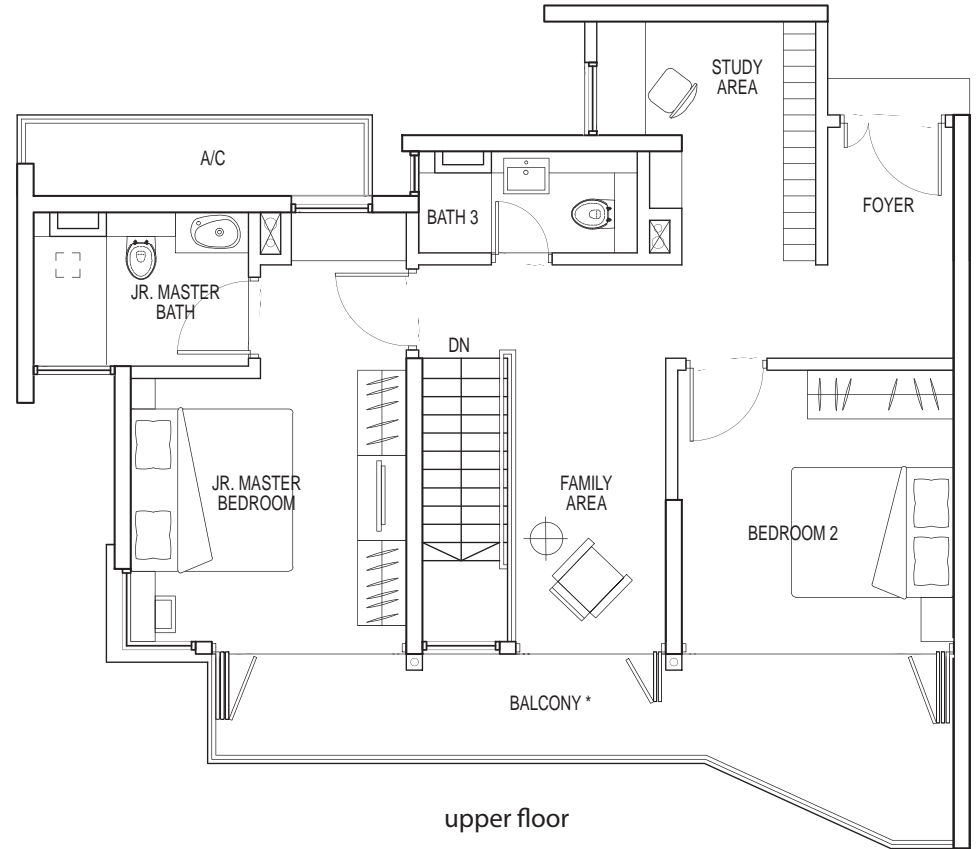
3 + Study + Family

183 sq m

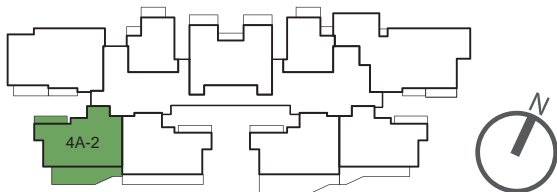
#26-02



lower floor



upper floor



Note: Unit area includes balcony, yard, AC ledge and/or void where applicable. All plans are subject to amendments as approved by the relevant authorities.

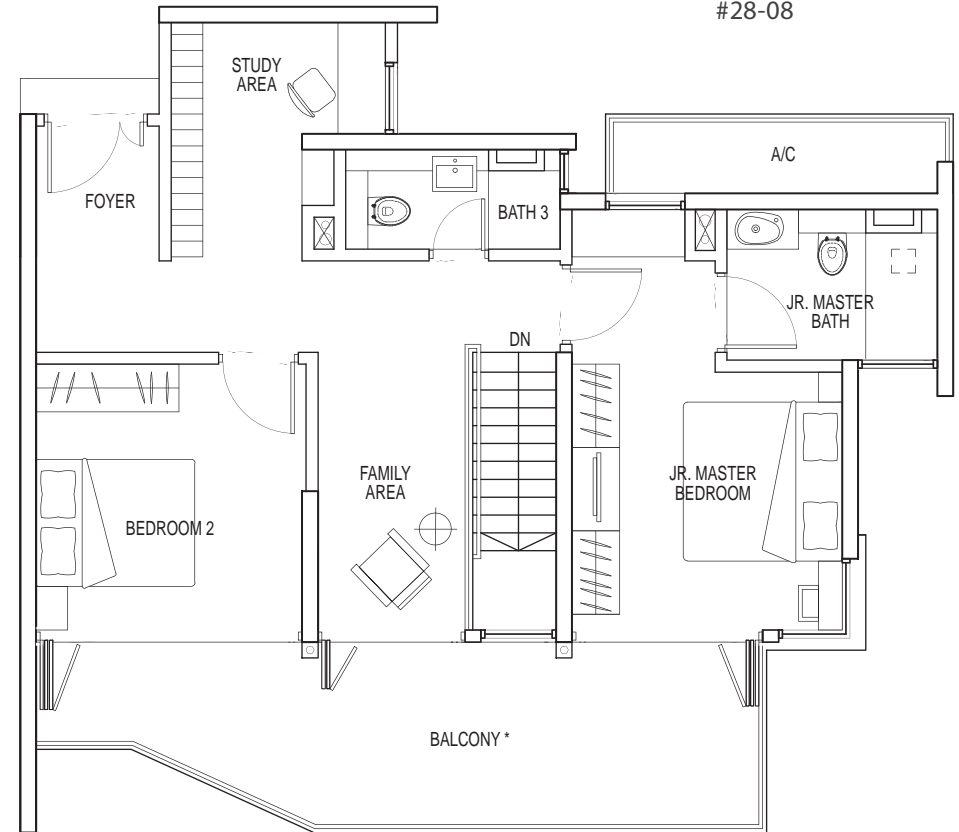
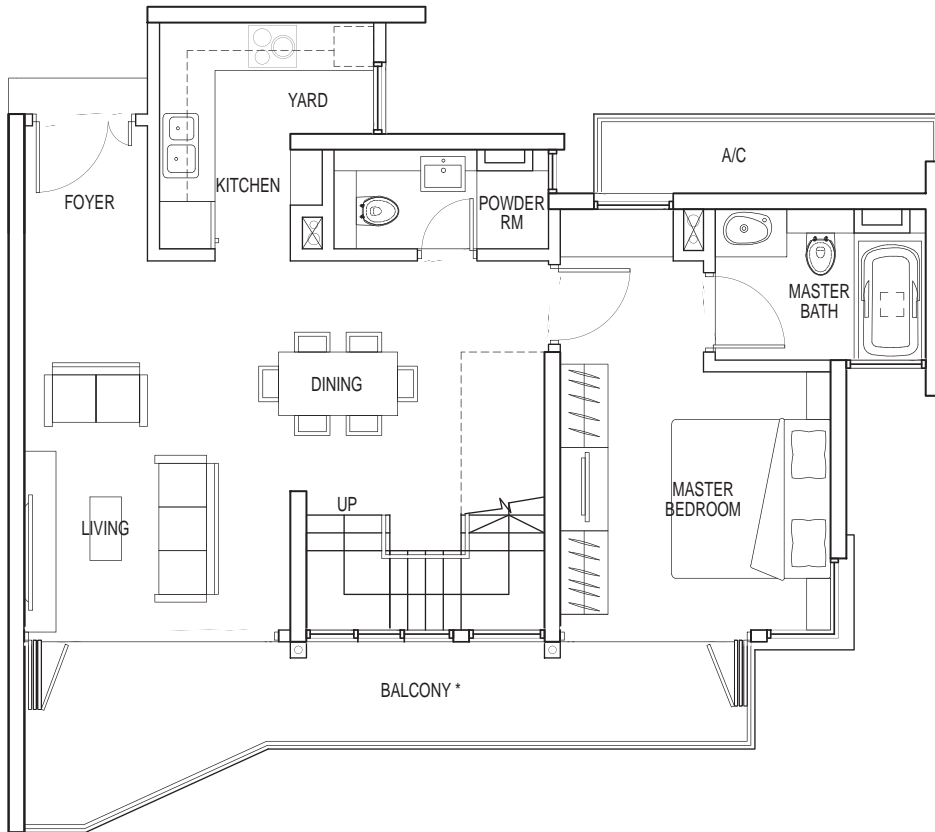
*The balcony shall not be enclosed. Only approved balcony screens are to be used. For an illustration of the approved balcony screen, please refer to page 33 of this brochure."

TYPE 4A-3

3 + Study + Family

183 sq m

#28-08



lower floor

upper floor



Note: Unit area includes balcony, yard, AC ledge and/or void where applicable. All plans are subject to amendments as approved by the relevant authorities.

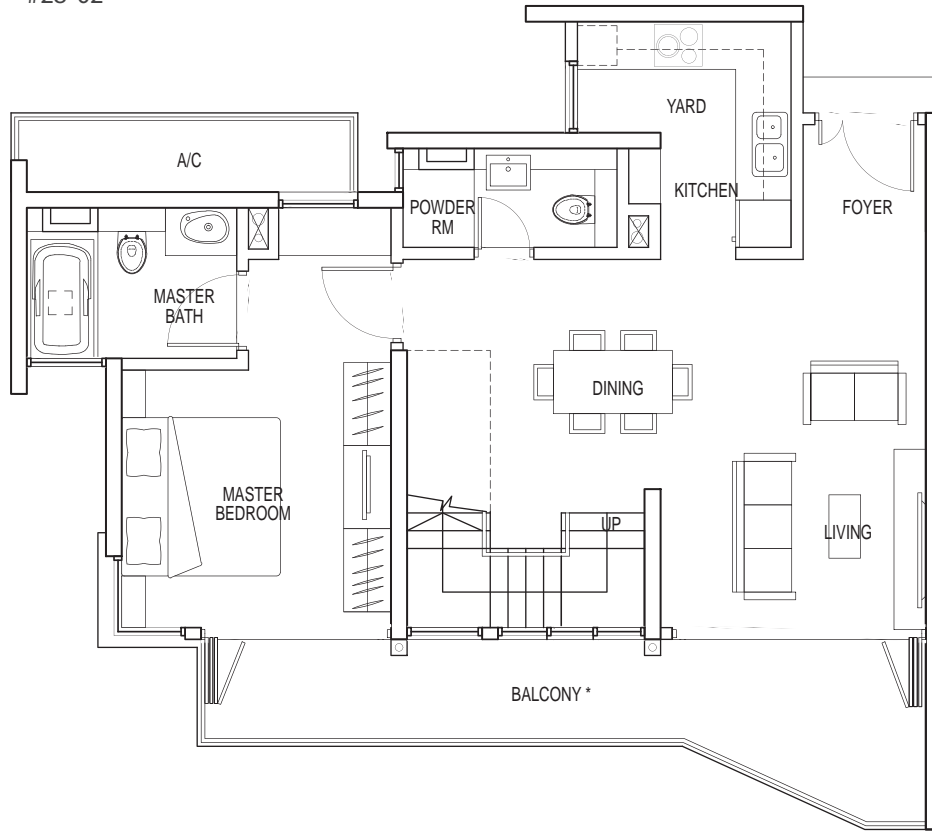
*"The balcony shall not be enclosed. Only approved balcony screens are to be used. For an illustration of the approved balcony screen, please refer to page 33 of this brochure."

TYPE 4A-4

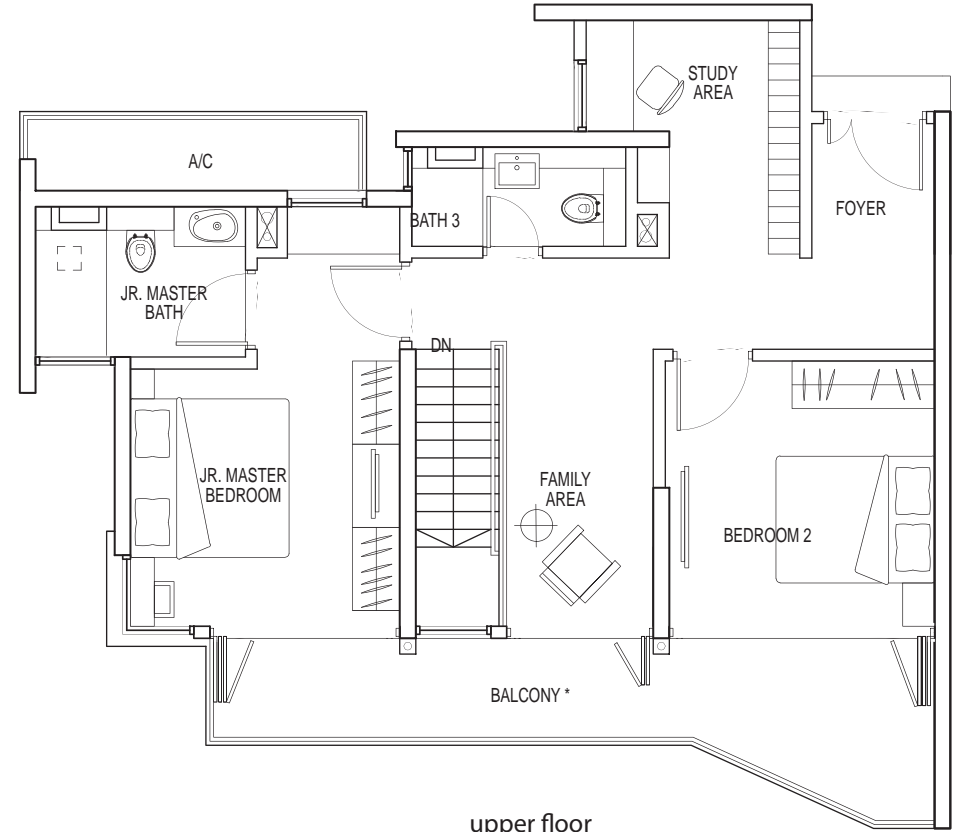
3 + Study + Family

178 sq m

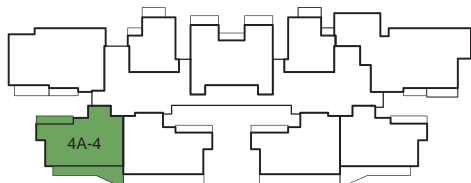
#28-02



lower floor



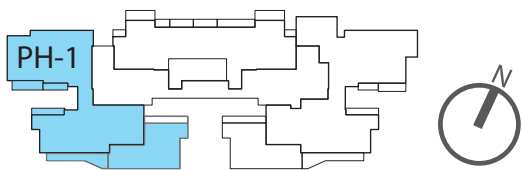
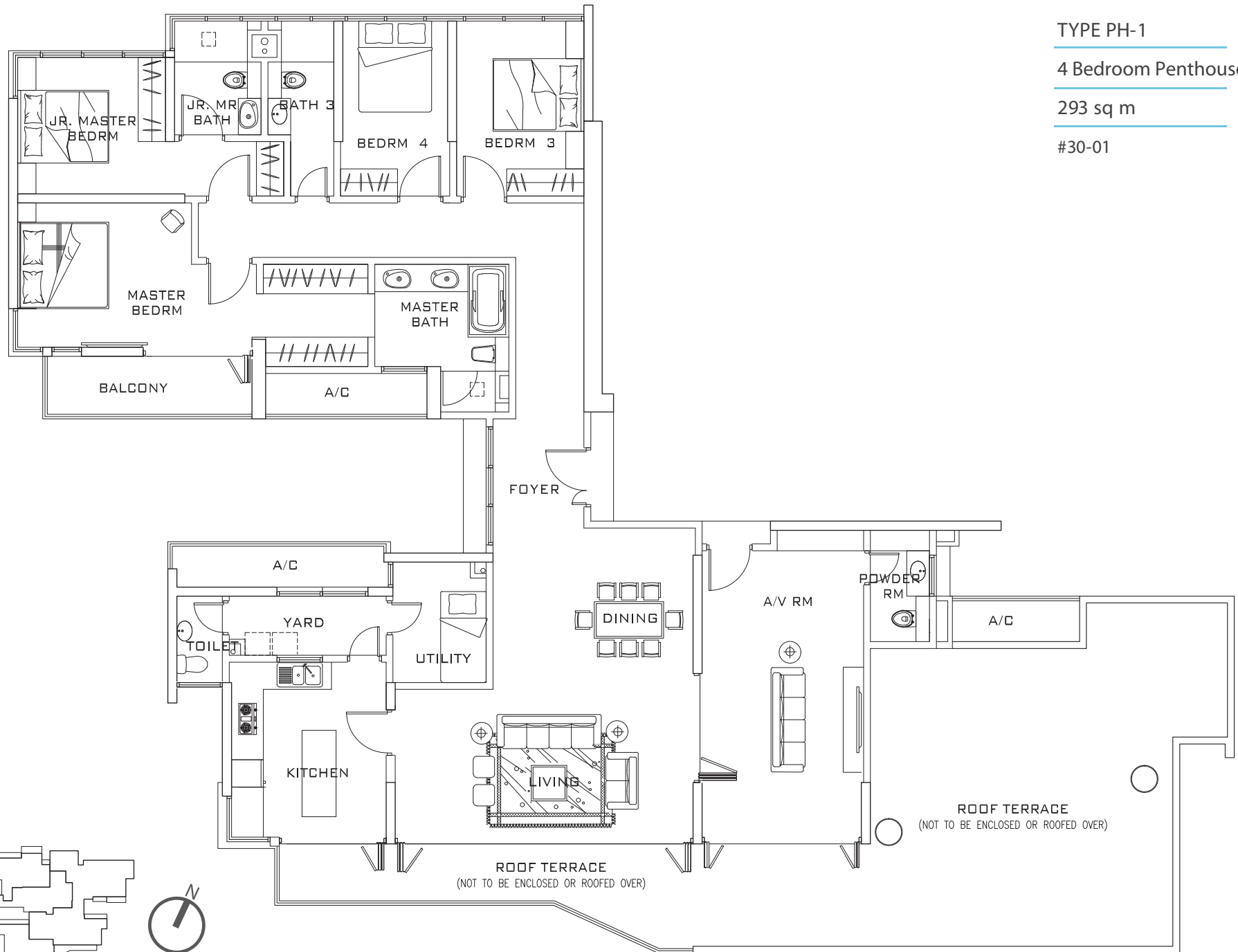
upper floor



Note: Unit area includes balcony, yard, AC ledge and/or void where applicable. All plans are subject to amendments as approved by the relevant authorities.

* "The balcony shall not be enclosed. Only approved balcony screens are to be used. For an illustration of the approved balcony screen, please refer to page 33 of this brochure."

TYPE PH-1
 4 Bedroom Penthouse
 293 sq m
 #30-01



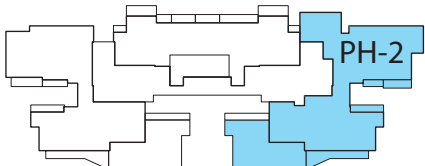
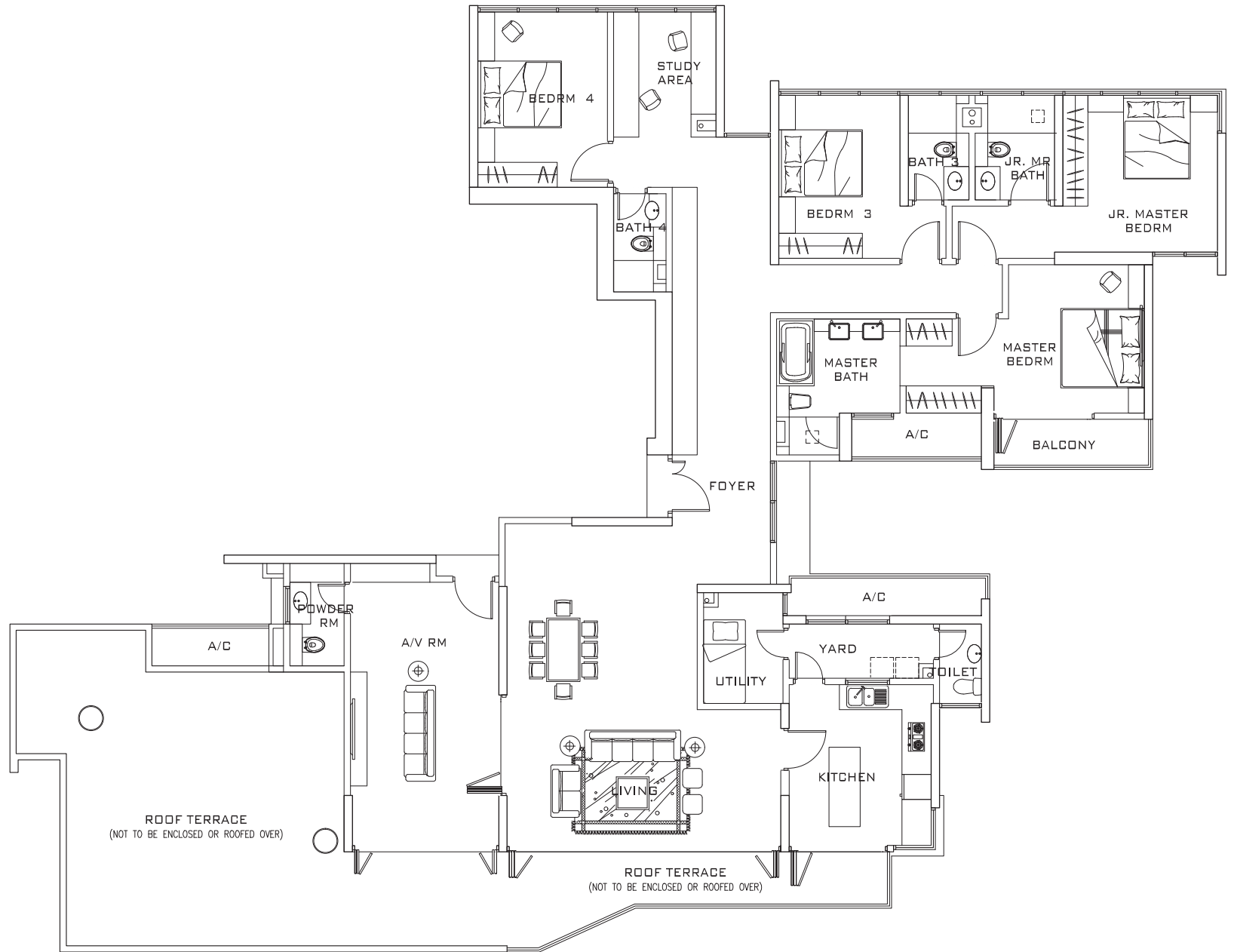
Note: Unit area includes balcony, yard, AC ledge and/or void where applicable. All plans are subject to amendments as approved by the relevant authorities.
 * "The balcony shall not be enclosed. Only approved balcony screens are to be used. For an illustration of the approved balcony screen, please refer to page 33 of this brochure."

TYPE PH-2

4 Bedroom Penthouse

325 sq m

#30-03



Note: Unit area includes balcony, yard, AC ledge and/or void where applicable. All plans are subject to amendments as approved by the relevant authorities.

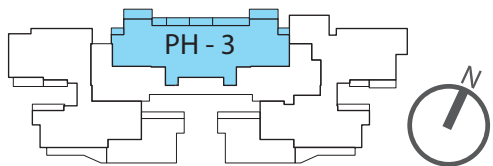
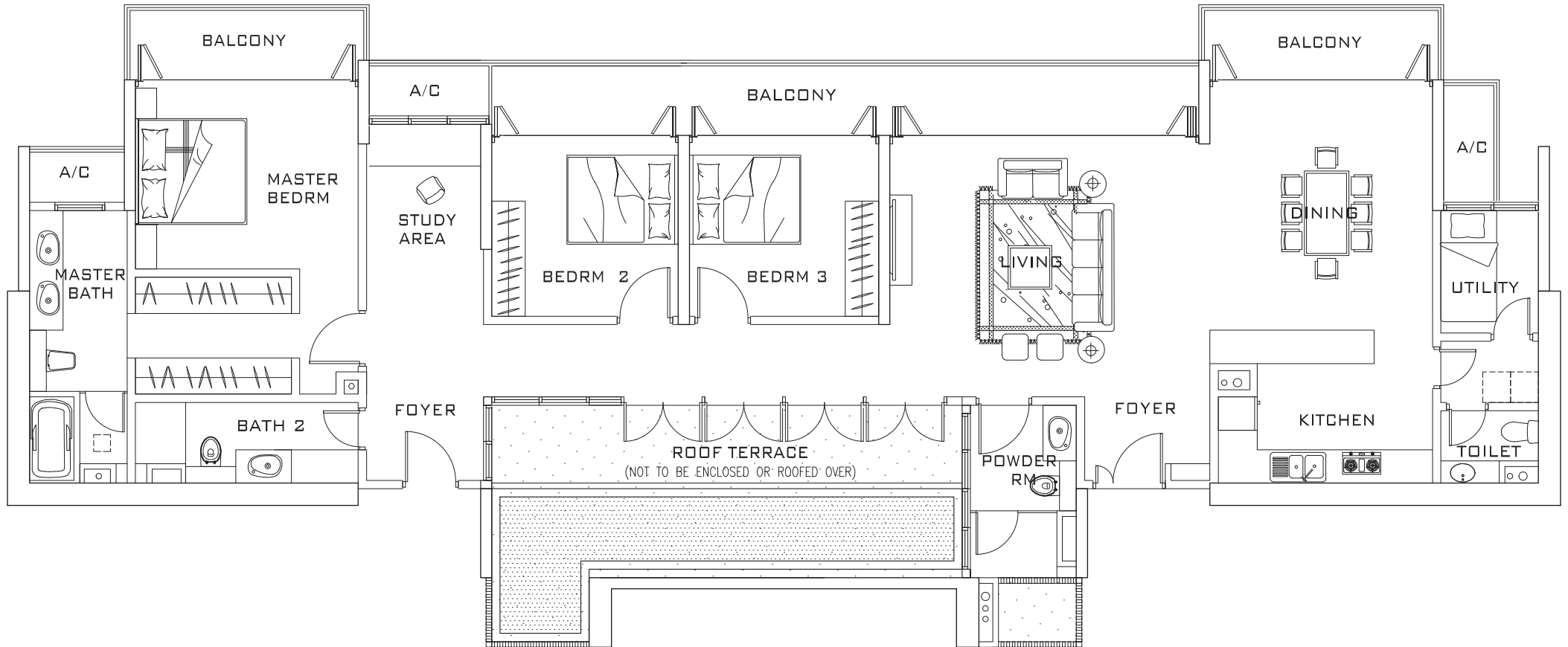
* "The balcony shall not be enclosed. Only approved balcony screens are to be used. For an illustration of the approved balcony screen, please refer to page 33 of this brochure."

TYPE PH-3

3 + Study Penthouse

233 sq m

#30-02



Note: Unit area includes balcony, yard, AC ledge and/or void where applicable. All plans are subject to amendments as approved by the relevant authorities.

The balcony shall not be enclosed. Only approved balcony screens are to be used. For an illustration of the approved balcony screen, please refer to page 33 of this brochure.