

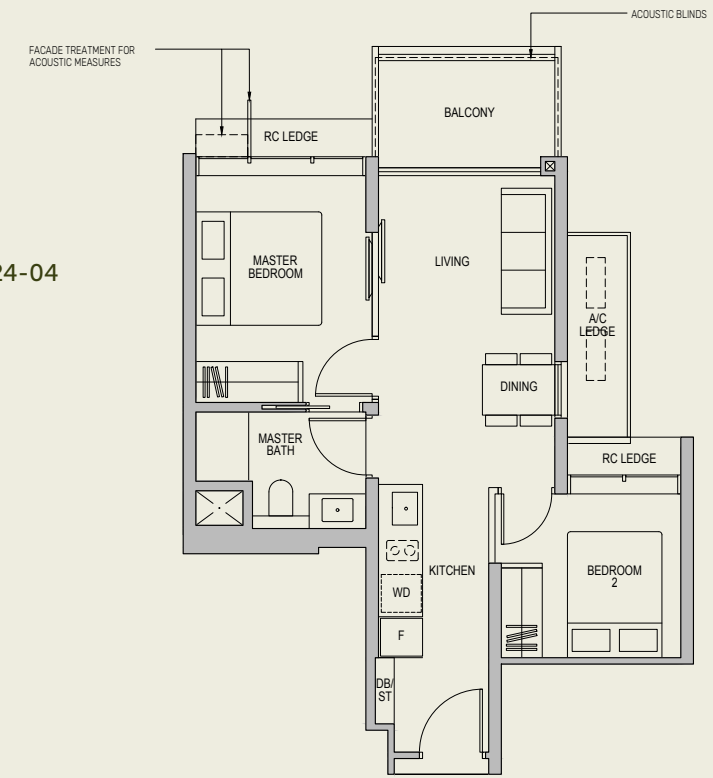


FOR ILLUSTRATION ONLY

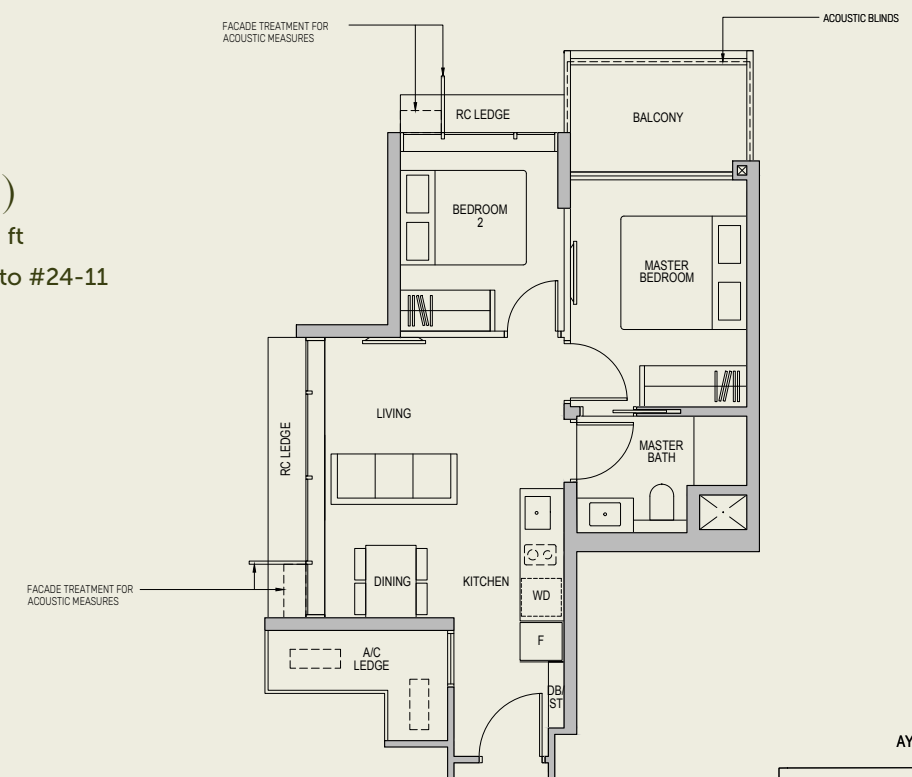
LYNDENWOODS

2-BEDROOM

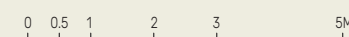
TYPE B1(a)
 59 sq m / 635 sq ft
 BLK 69 : #03-04 to #24-04



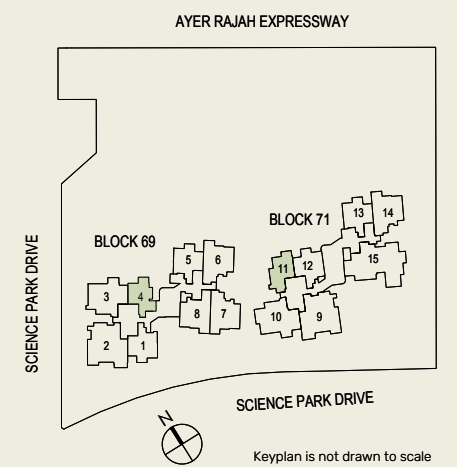
TYPE B2(a)
 59 sq m / 635 sq ft
 BLK 71 : #02-11 to #24-11



- WC - Water Closet
- HS - Household Shelter
- DB/ST - Distribution Board/Storage
- F - Fridge
- A/C - Air-Conditioner
- WD - Washer Cum Dryer
- RC - Reinforced Concrete
- Integrated Induction Hob
- Wall not allowed to be hacked or altered (including by way of drilling)



Area includes Balcony and A/C ledges. All RC ledges are excluded from strata area. All areas and measurements stated herein as approximate and subject to final survey.



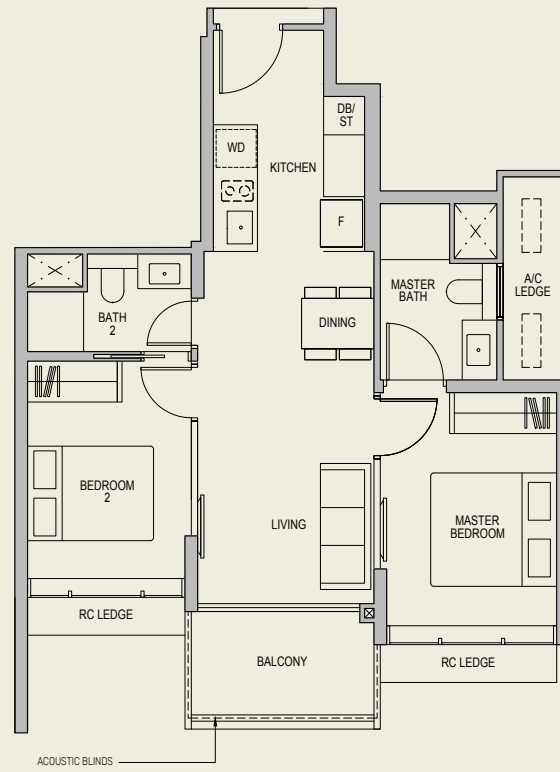
Keyplan is not drawn to scale

2-BEDROOM

TYPE B3

67 sq m / 721 sq ft

BLK 69 : #02-01 to #24-01

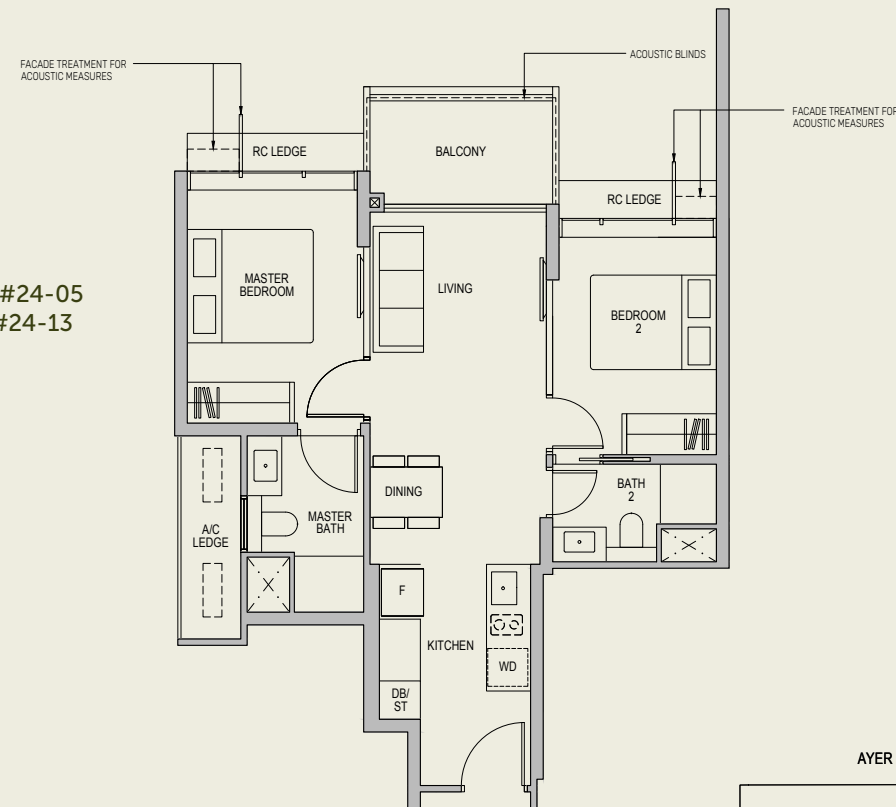


TYPE B3(a)

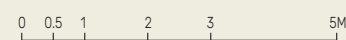
67 sq m / 721 sq ft

BLK 69 : #02-05 to #24-05

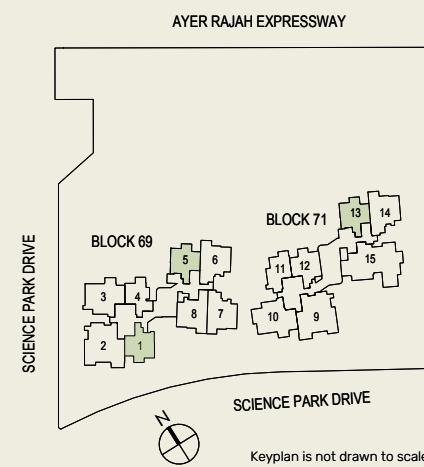
BLK 71 : #02-13 to #24-13



- WC - Water Closet
- HS - Household Shelter
- DB/ST - Distribution Board/Storage
- F - Fridge
- A/C - Air-Conditioner
- WD - Washer Cum Dryer
- RC - Reinforced Concrete
- Integrated Induction Hob
- Wall not allowed to be hacked or altered (including by way of drilling)



Area includes Balcony and A/C ledges. All RC ledges are excluded from strata area. All areas and measurements stated herein as approximate and subject to final survey.

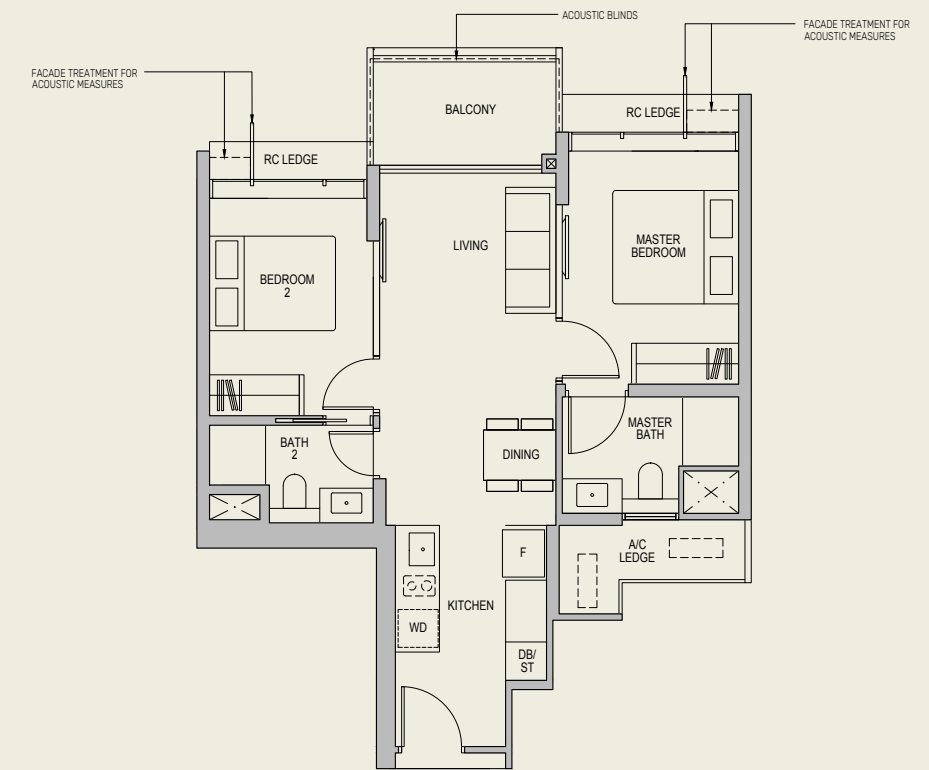


2-BEDROOM

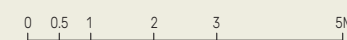
TYPE B4(a)

67 sq m / 721 sq ft

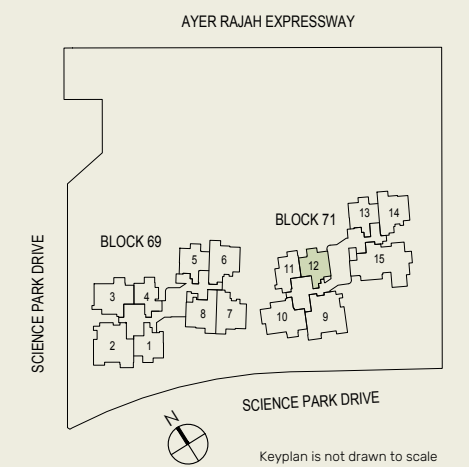
BLK 71 : #02-12 to #24-12



- WC - Water Closet
- HS - Household Shelter
- DB/ST - Distribution Board/Storage
- F - Fridge
- A/C - Air-Conditioner
- WD - Washer Cum Dryer
- RC - Reinforced Concrete
- Integrated Induction Hob
- Wall not allowed to be hacked or altered (including by way of drilling)

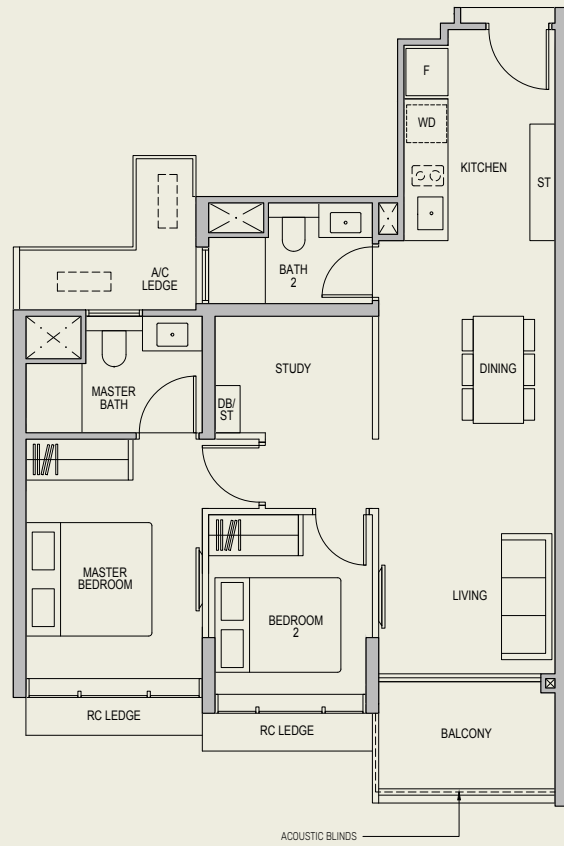


Area includes Balcony and A/C ledges. All RC ledges are excluded from strata area. All areas and measurements stated herein as approximate and subject to final survey.

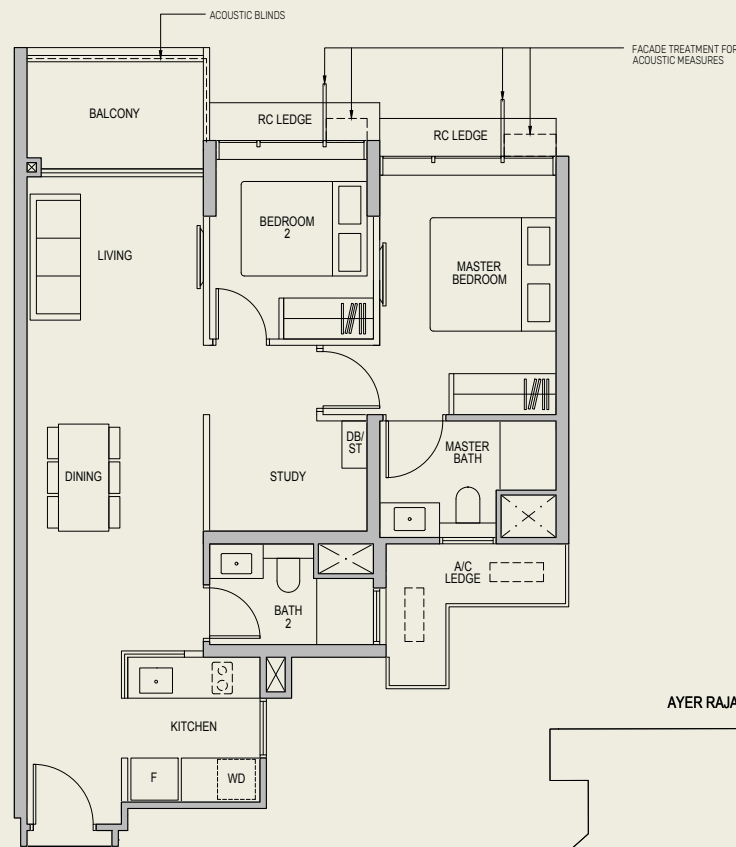


2-BEDROOM + STUDY

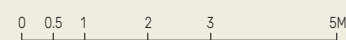
TYPE BS1
 79 sq m / 850 sq ft
 BLK 69 : #02-08 to #24-08



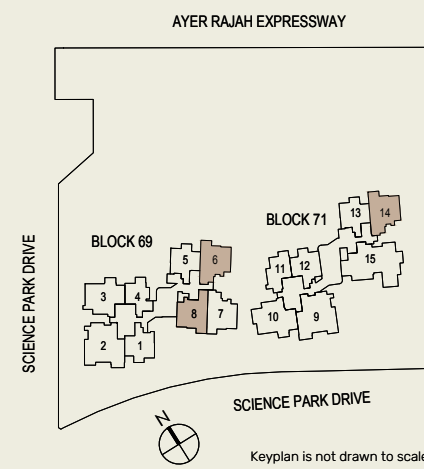
TYPE BS2(a)
 82 sq m / 883 sq ft
 BLK 69 : #02-06 to #24-06
 BLK 71 : #02-14 to #24-14



- WC - Water Closet
- HS - Household Shelter
- DB/ST - Distribution Board/Storage
- F - Fridge
- A/C - Air-Conditioner
- WD - Washer Cum Dryer
- RC - Reinforced Concrete
- Integrated Induction Hob
- Wall not allowed to be hacked or altered (including by way of drilling)

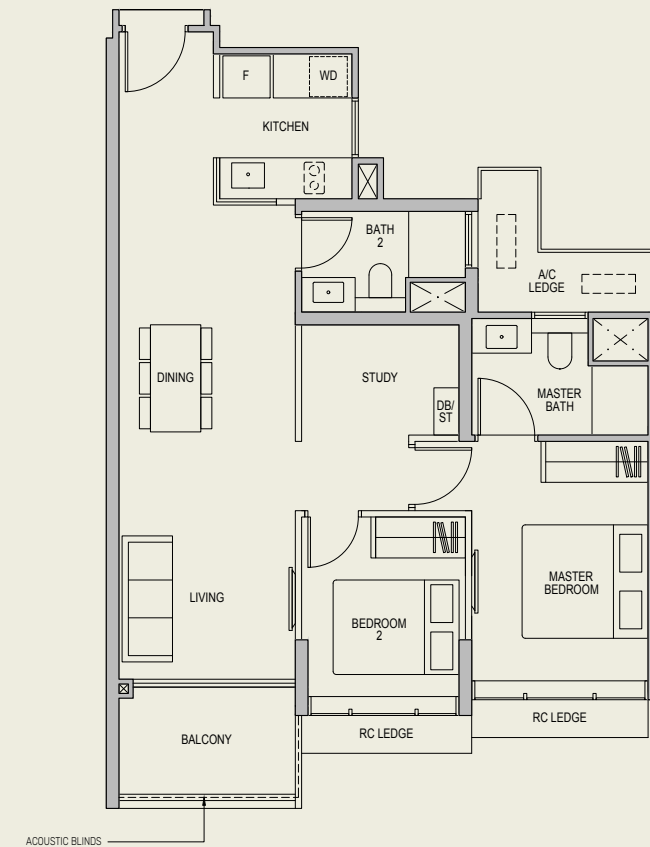


Area includes Balcony and A/C ledges. All RC ledges are excluded from strata area. All areas and measurements stated herein as approximate and subject to final survey.

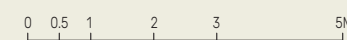


2-BEDROOM + STUDY

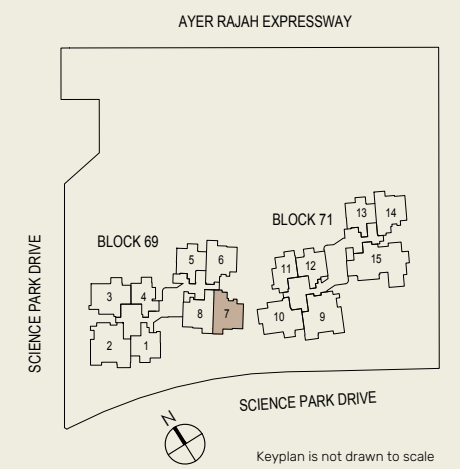
TYPE BS3
 82 sq m / 883 sq ft
 BLK 69 : #02-07 to #24-07



- WC - Water Closet
- HS - Household Shelter
- DB/ST - Distribution Board/Storage
- F - Fridge
- A/C - Air-Conditioner
- WD - Washer Cum Dryer
- RC - Reinforced Concrete
- Integrated Induction Hob
- Wall not allowed to be hacked or altered (including by way of drilling)



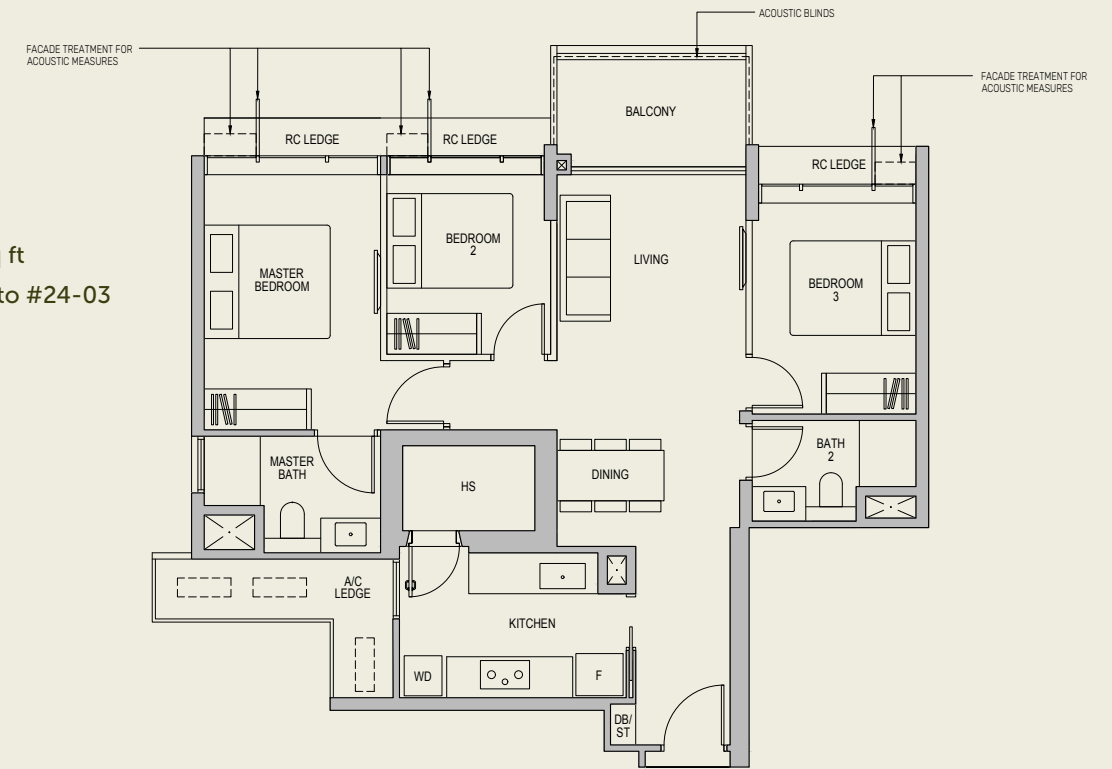
Area includes Balcony and A/C ledges. All RC ledges are excluded from strata area. All areas and measurements stated herein as approximate and subject to final survey.



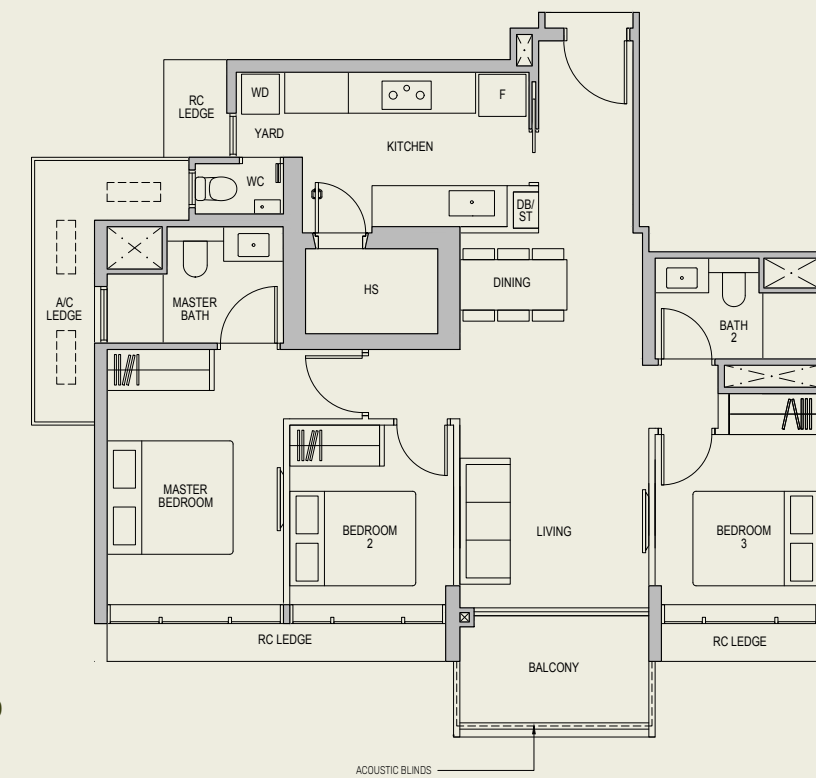


3-BEDROOM

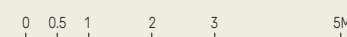
TYPE C1(a)
 95 sq m / 1023 sq ft
 BLK 69 : #03-03 to #24-03



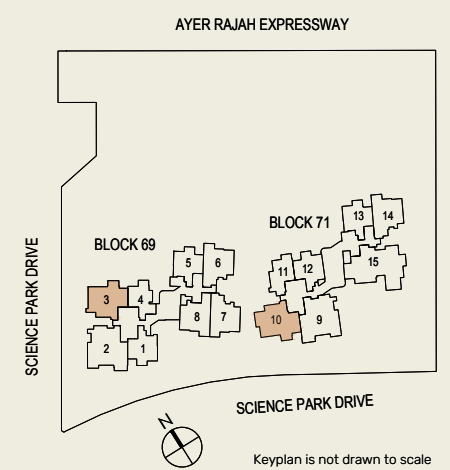
TYPE C2
 99 sq m / 1066 sq ft
 BLK 71 : #02-10 to #24-10



- WC - Water Closet
- HS - Household Shelter
- DB/ST - Distribution Board/Storage
- F - Fridge
- A/C - Air-Conditioner
- WD - Washer Cum Dryer
- RC - Reinforced Concrete
- Integrated Induction Hob
- Wall not allowed to be hacked or altered (including by way of drilling)



Area includes Balcony and A/C ledges. All RC ledges are excluded from strata area. All areas and measurements stated herein as approximate and subject to final survey.

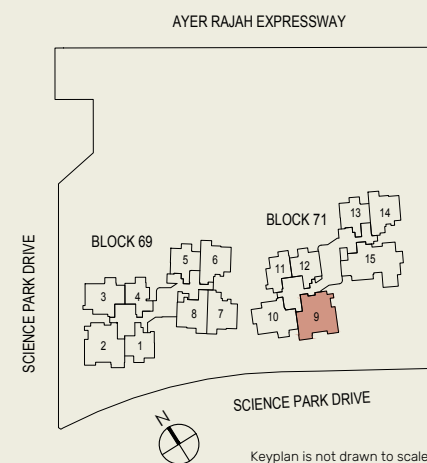
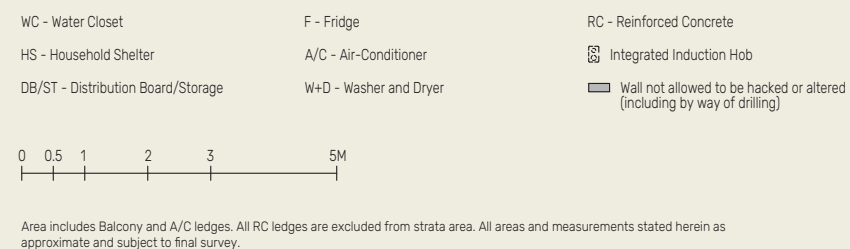
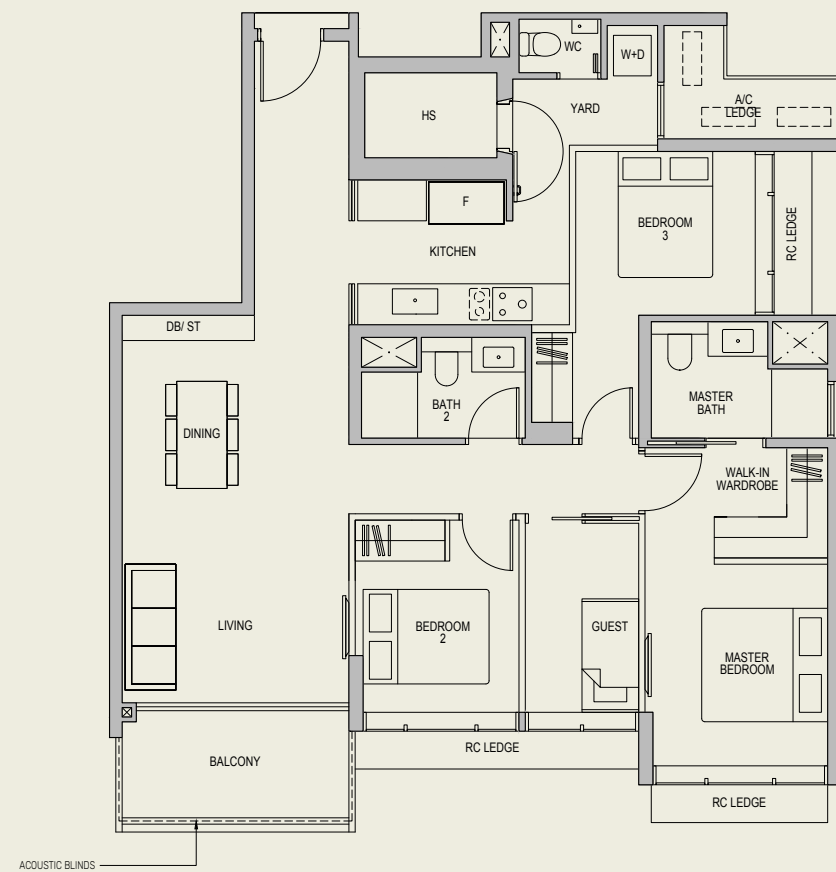


3-BEDROOM + GUEST (PREMIUM)

TYPE CGP

120 sq m / 1292 sq ft

BLK 71 : #02-09 to #24-09

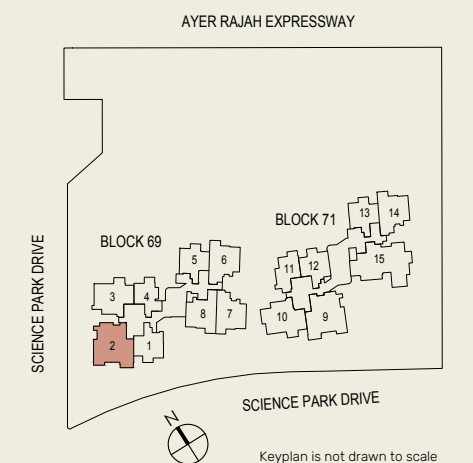
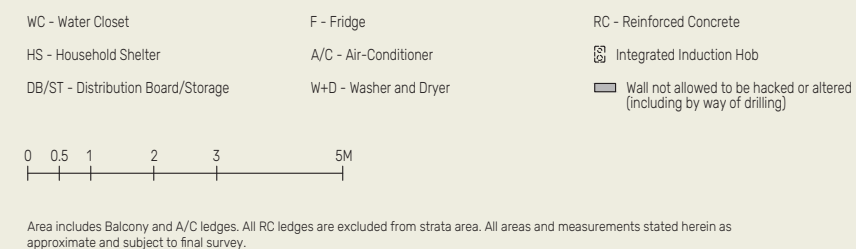
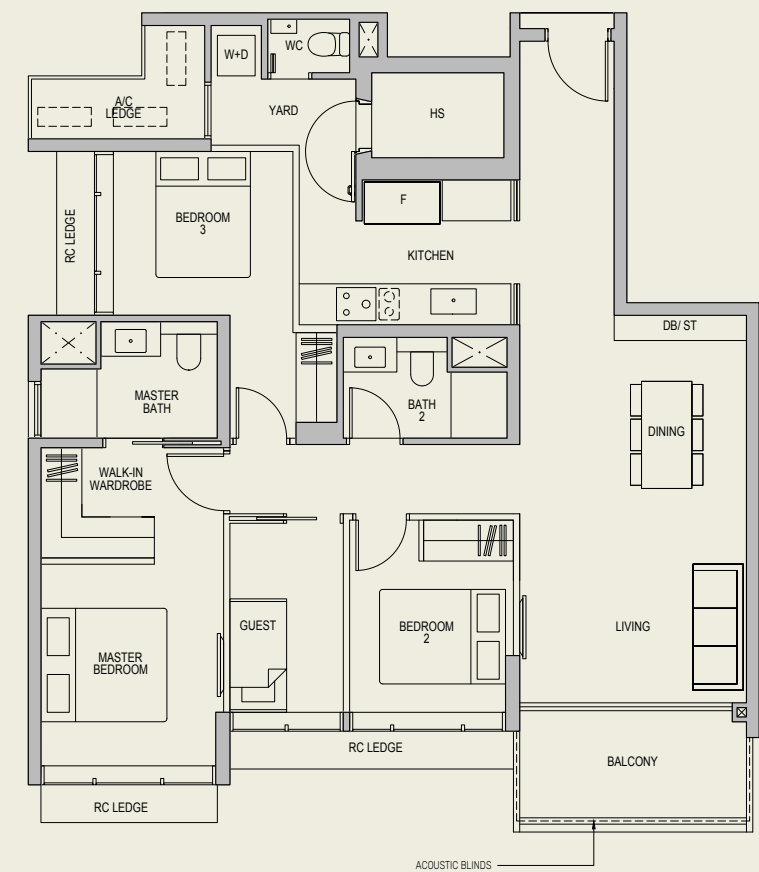


3-BEDROOM + GUEST (PREMIUM)

TYPE CGP(m)

120 sq m / 1292 sq ft

BLK 69 : #02-02 to #24-02





FOR ILLUSTRATION ONLY

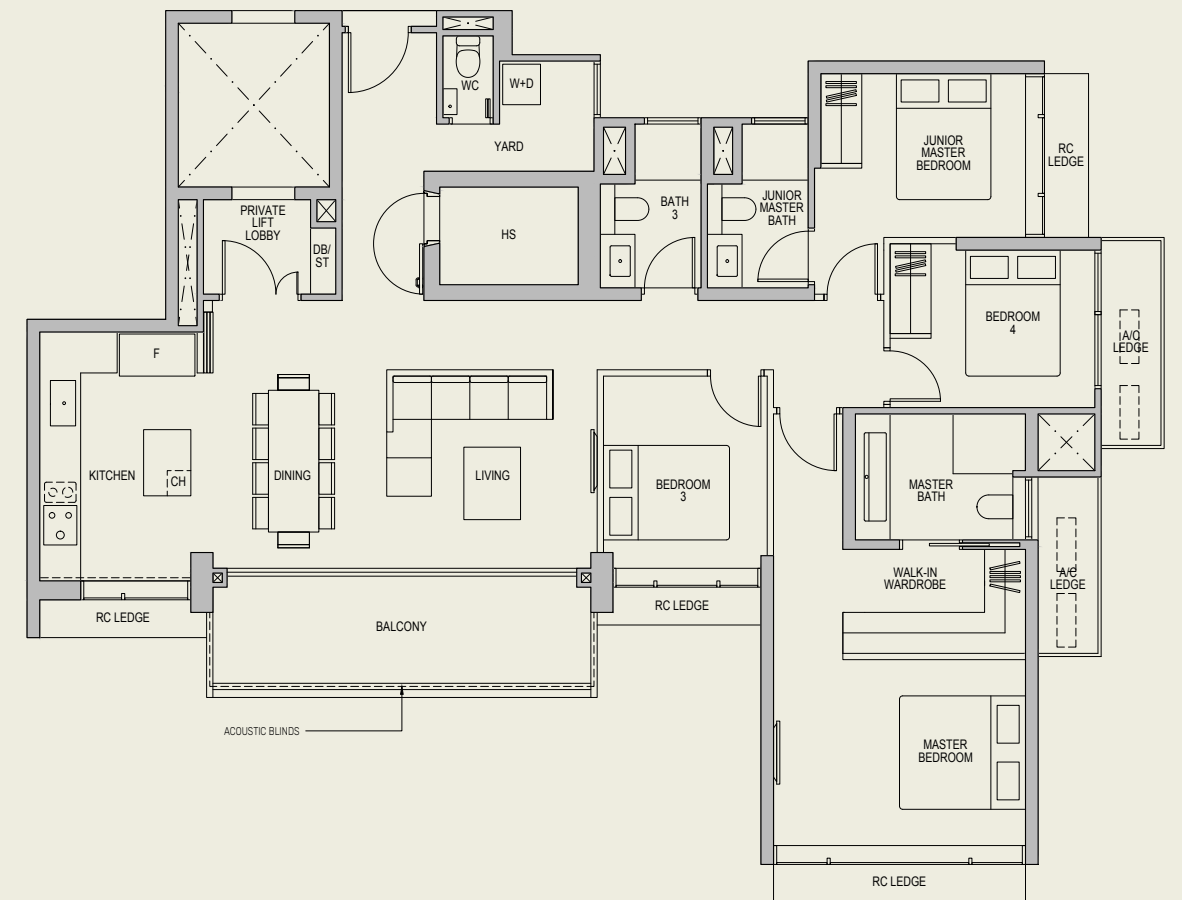
LYNDENWOODS

4-BEDROOM (PREMIUM)

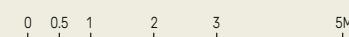
TYPE DP

153 sq m / 1647 sq ft

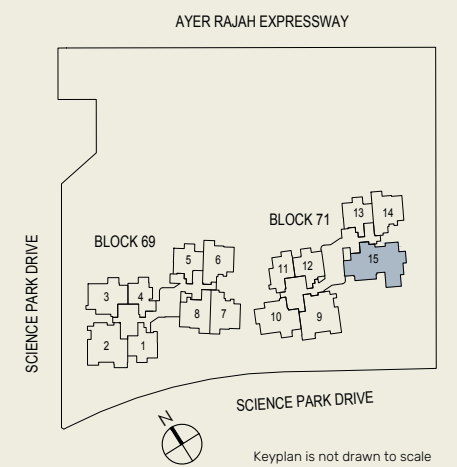
BLK 71 : #02-15 to #24-15



- WC - Water Closet
- HS - Household Shelter
- DB/ST - Distribution Board/Storage
- F - Fridge
- CH - Wine Chiller
- A/C - Air-Conditioner
- W+D - Washer and Dryer
- RC - Reinforced Concrete
- Integrated Induction Hob
- Wall not allowed to be hacked or altered (including by way of drilling)



Area includes Balcony and A/C ledges. All RC ledges are excluded from strata area. All areas and measurements stated herein as approximate and subject to final survey.



Keyplan is not drawn to scale