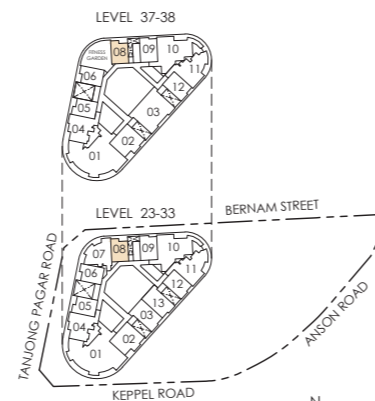
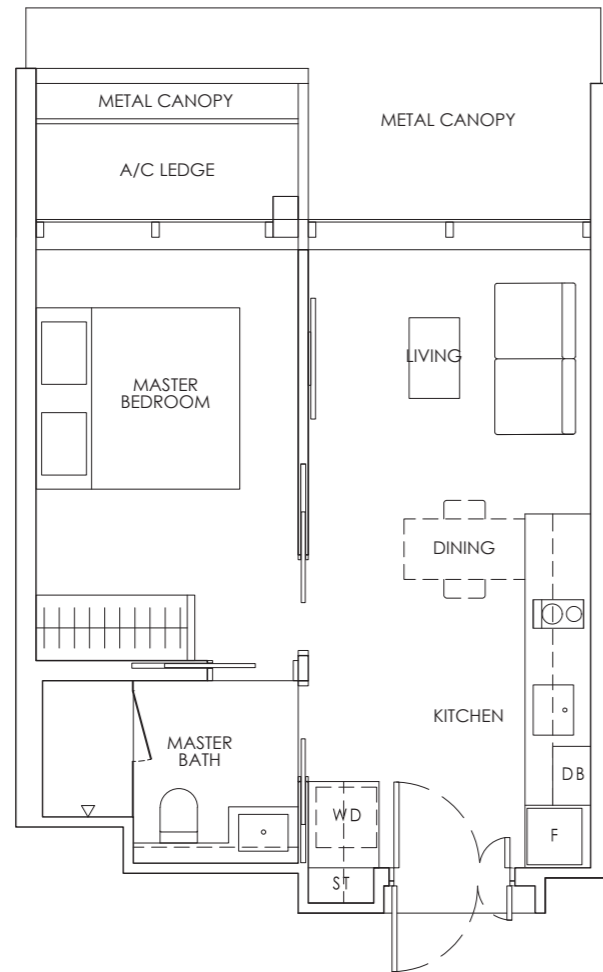


1-BEDROOM

Type A1
40 sq m / 431 sq ft

#23-08 to #33-08
#37-08 to #38-08



Key plan is not drawn to scale.



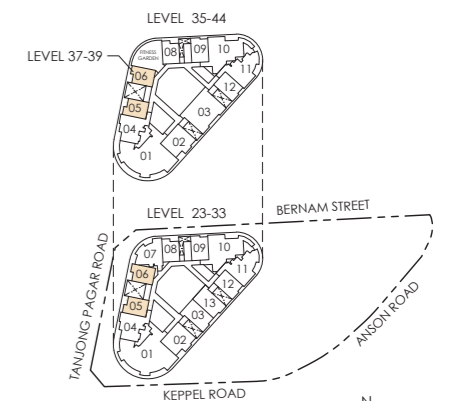
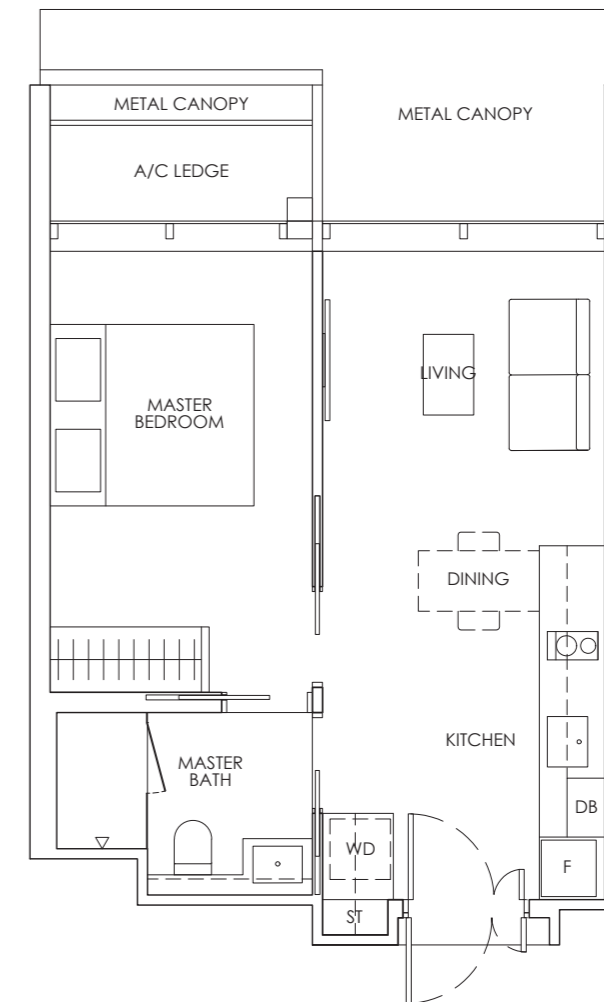
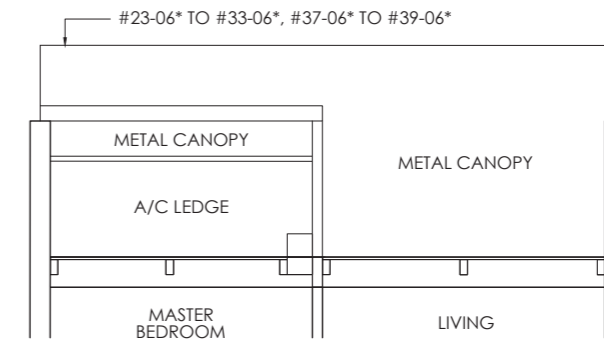
Legend (where applicable)
DB Distribution Board **WD** Washer cum Dryer **W/D** Washer and Dryer **F** Fridge **WC** Water Closet
ST Storage **HS** Household Shelter **A/C** Air-Conditioner **M** Mirror Image

Strata area includes air-conditioner (A/C) ledge, balcony and strata void where applicable. Metal canopy is not included in the strata area. All floor plans, areas and measurements stated herein are approximate only and are subject to final survey. Please refer to the key plan for orientation. The plans are subject to change as may be required by the relevant authorities. The balcony shall not be enclosed unless with the approved balcony screen, more particularly illustrated under the header "Approved Balcony Screen". Please refer to the letter containing the Particulars, Documents and Information (PDI) relating to the unit and the development, for the area breakdown and floor plan relating to the unit you intend to purchase. The Sale and Purchase Agreement contains the entire agreement between the developer and the purchaser and supersedes and cancels in all respects all previous representations, warranties, promises, inducements or statements of intention, whether written or oral made by the developer and/or the developer's agent(s) which are not embodied in the Sale and Purchase Agreement.

1-BEDROOM

Type A2
42 sq m / 452 sq ft

#23-05 to #33-05
#35-05 to #44-05
#23-06* to #33-06*
#37-06* to #39-06*



Key plan is not drawn to scale.



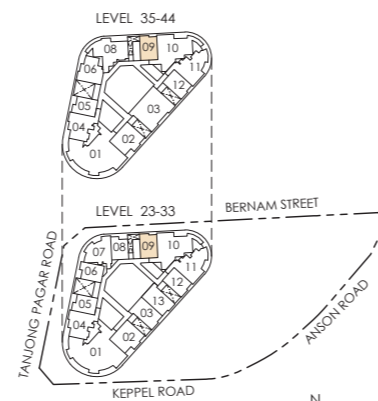
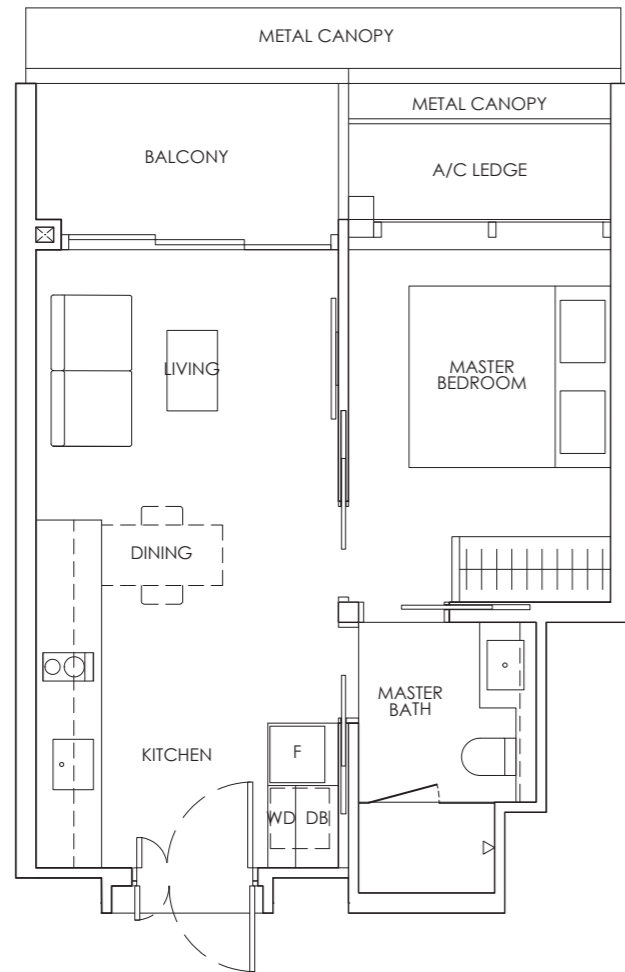
Legend (where applicable)
DB Distribution Board **WD** Washer cum Dryer **W/D** Washer and Dryer **F** Fridge **WC** Water Closet
ST Storage **HS** Household Shelter **A/C** Air-Conditioner **M** Mirror Image

Strata area includes air-conditioner (A/C) ledge, balcony and strata void where applicable. Metal canopy is not included in the strata area. All floor plans, areas and measurements stated herein are approximate only and are subject to final survey. Please refer to the key plan for orientation. The plans are subject to change as may be required by the relevant authorities. The balcony shall not be enclosed unless with the approved balcony screen, more particularly illustrated under the header "Approved Balcony Screen". Please refer to the letter containing the Particulars, Documents and Information (PDI) relating to the unit and the development, for the area breakdown and floor plan relating to the unit you intend to purchase. The Sale and Purchase Agreement contains the entire agreement between the developer and the purchaser and supersedes and cancels in all respects all previous representations, warranties, promises, inducements or statements of intention, whether written or oral made by the developer and/or the developer's agent(s) which are not embodied in the Sale and Purchase Agreement.

1-BEDROOM

Type A3
44 sq m / 474 sq ft

#23-09 to #33-09
#35-09 to #44-09



Key plan is not drawn to scale.



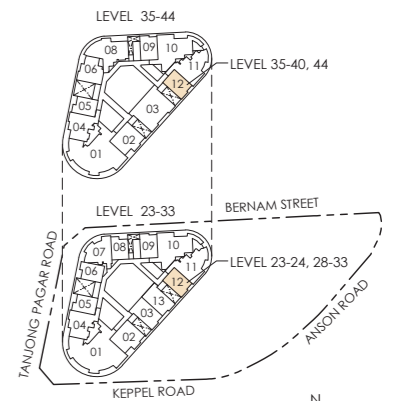
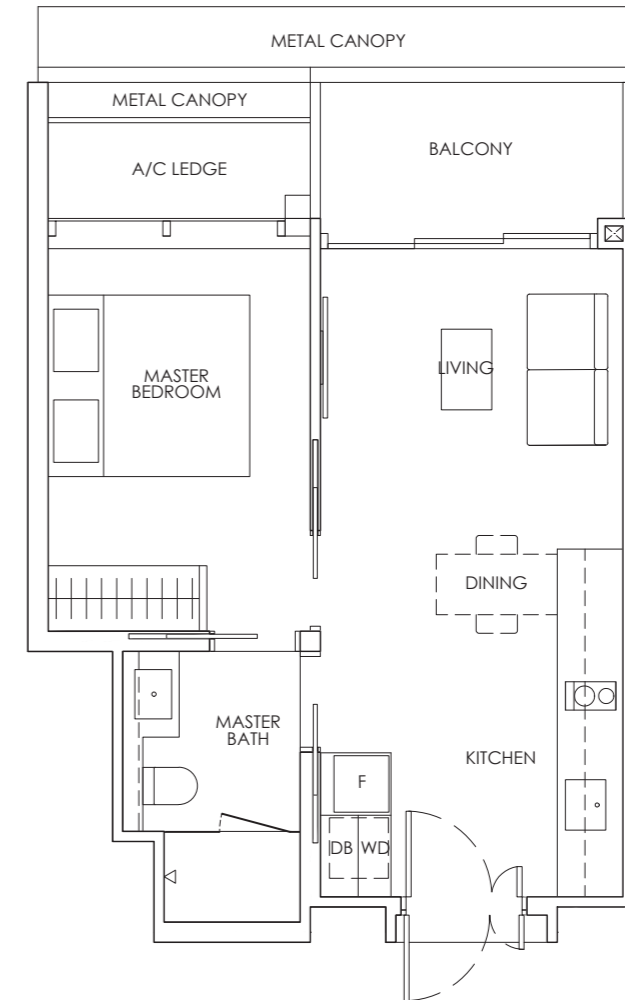
Legend (where applicable)
DB Distribution Board **WD** Washer cum Dryer **W/D** Washer and Dryer **F** Fridge **WC** Water Closet
ST Storage **HS** Household Shelter **A/C** Air-Conditioner • Mirror Image

Strata area includes air-conditioner (A/C) ledge, balcony and strata void where applicable. Metal canopy is not included in the strata area. All floor plans, areas and measurements stated herein are approximate only and are subject to final survey. Please refer to the key plan for orientation. The plans are subject to change as may be required by the relevant authorities. The balcony shall not be enclosed unless with the approved balcony screen, more particularly illustrated under the header "Approved Balcony Screen". Please refer to the letter containing the Particulars, Documents and Information (PDI) relating to the unit and the development, for the area breakdown and floor plan relating to the unit you intend to purchase. The Sale and Purchase Agreement contains the entire agreement between the developer and the purchaser and supersedes and cancels in all respects all previous representations, warranties, promises, inducements or statements of intention, whether written or oral made by the developer and/or the developer's agent(s) which are not embodied in the Sale and Purchase Agreement.

1-BEDROOM

Type A4
46 sq m / 495 sq ft

#23-12 to #24-12
#28-12 to #33-12
#35-12 to #40-12
#44-12



Key plan is not drawn to scale.

SCAN TO VIEW
VIRTUAL TOUR



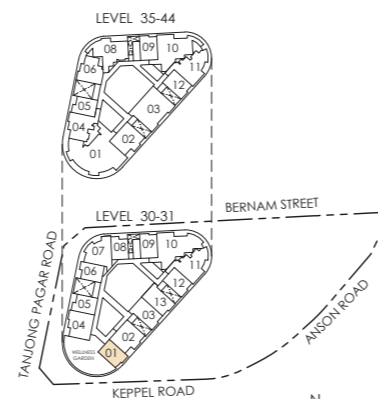
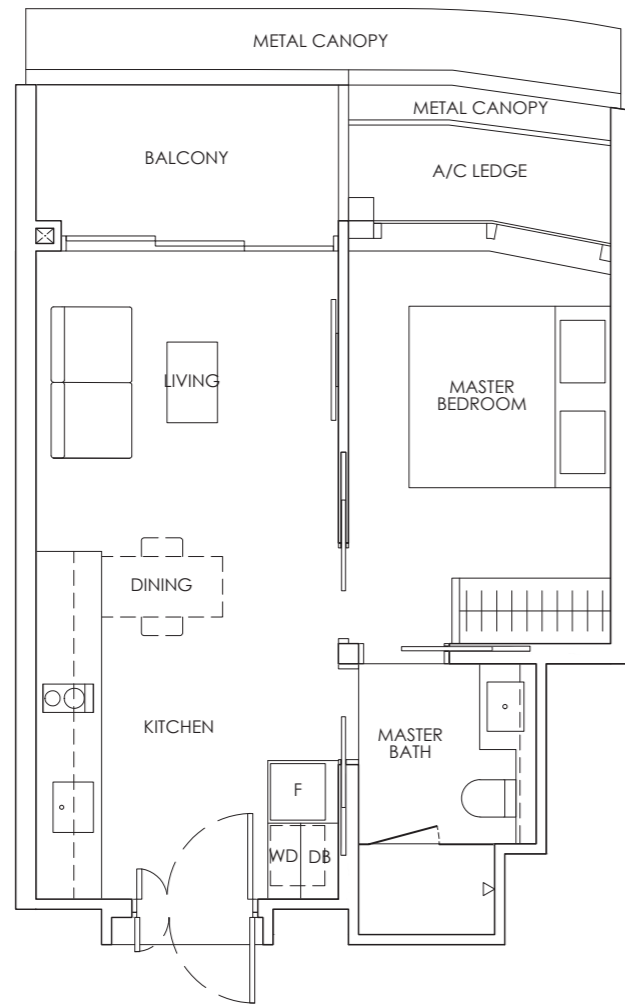
Legend (where applicable)
DB Distribution Board **WD** Washer cum Dryer **W/D** Washer and Dryer **F** Fridge **WC** Water Closet
ST Storage **HS** Household Shelter **A/C** Air-Conditioner • Mirror Image

Strata area includes air-conditioner (A/C) ledge, balcony and strata void where applicable. Metal canopy is not included in the strata area. All floor plans, areas and measurements stated herein are approximate only and are subject to final survey. Please refer to the key plan for orientation. The plans are subject to change as may be required by the relevant authorities. The balcony shall not be enclosed unless with the approved balcony screen, more particularly illustrated under the header "Approved Balcony Screen". Please refer to the letter containing the Particulars, Documents and Information (PDI) relating to the unit and the development, for the area breakdown and floor plan relating to the unit you intend to purchase. The Sale and Purchase Agreement contains the entire agreement between the developer and the purchaser and supersedes and cancels in all respects all previous representations, warranties, promises, inducements or statements of intention, whether written or oral made by the developer and/or the developer's agent(s) which are not embodied in the Sale and Purchase Agreement.

1-BEDROOM

Type A5
46 sq m / 495 sq ft

#30-01 to #31-01



Key plan is not drawn to scale.



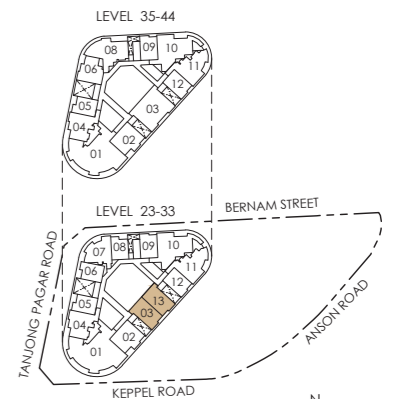
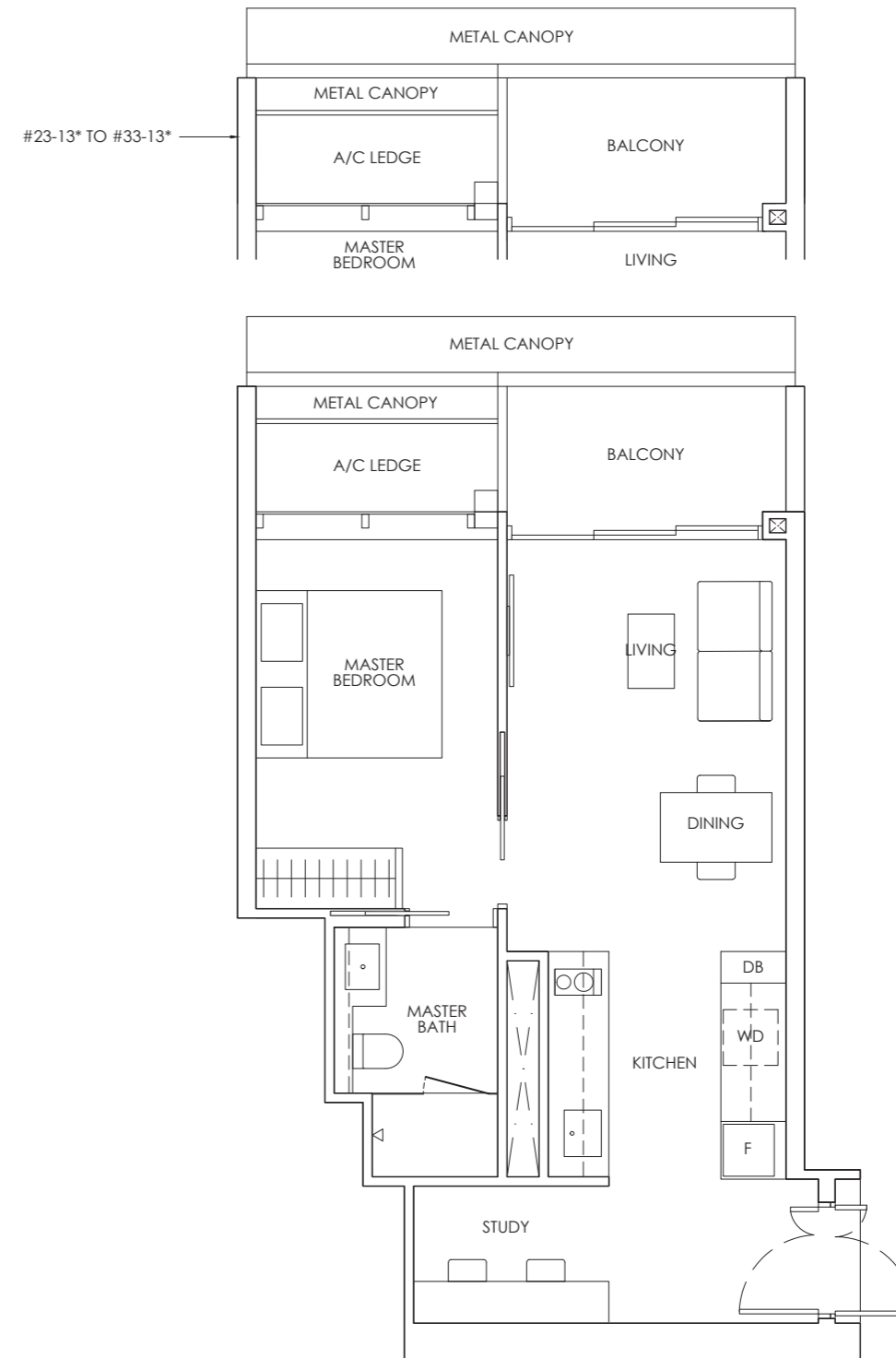
Legend (where applicable)
DB Distribution Board **WD** Washer cum Dryer **W/D** Washer and Dryer **F** Fridge **WC** Water Closet
ST Storage **HS** Household Shelter **A/C** Air-Conditioner • Mirror Image

Strata area includes air-conditioner (A/C) ledge, balcony and strata void where applicable. Metal canopy is not included in the strata area. All floor plans, areas and measurements stated herein are approximate only and are subject to final survey. Please refer to the key plan for orientation. The plans are subject to change as may be required by the relevant authorities. The balcony shall not be enclosed unless with the approved balcony screen, more particularly illustrated under the header "Approved Balcony Screen". Please refer to the letter containing the Particulars, Documents and Information (PDI) relating to the unit and the development, for the area breakdown and floor plan relating to the unit you intend to purchase. The Sale and Purchase Agreement contains the entire agreement between the developer and the purchaser and supersedes and cancels in all respects all previous representations, warranties, promises, inducements or statements of intention, whether written or oral made by the developer and/or the developer's agent(s) which are not embodied in the Sale and Purchase Agreement.

1-BEDROOM + STUDY

Type AS1
54 sq m / 581 sq ft

#23-03 to #33-03
#23-13* to #33-13*



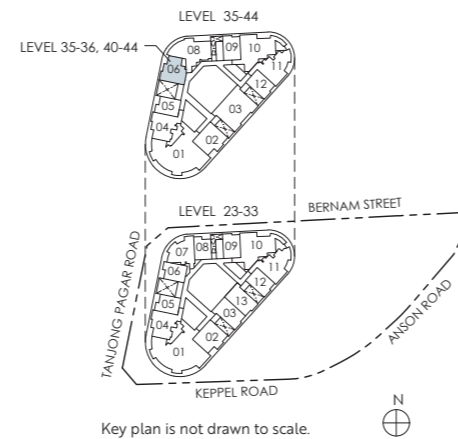
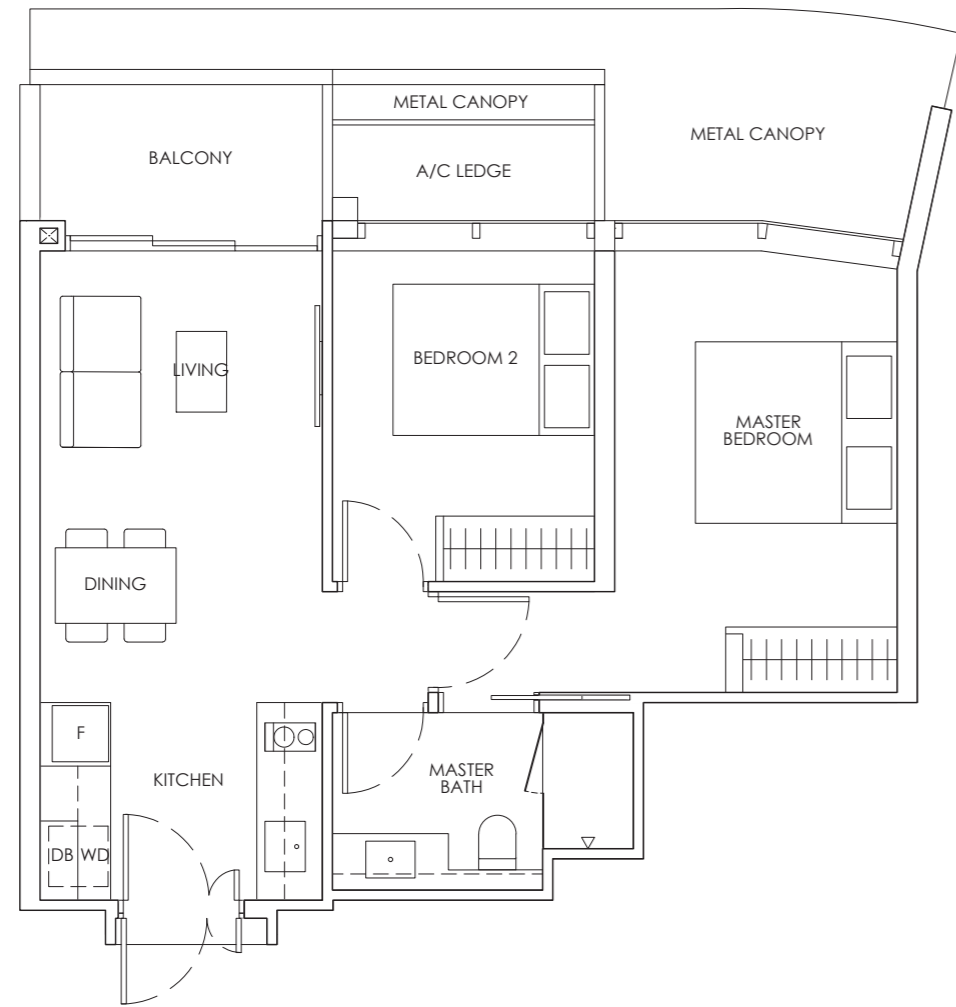
Legend (where applicable)
DB Distribution Board **WD** Washer cum Dryer **W/D** Washer and Dryer **F** Fridge **WC** Water Closet
ST Storage **HS** Household Shelter **A/C** Air-Conditioner • Mirror Image

Strata area includes air-conditioner (A/C) ledge, balcony and strata void where applicable. Metal canopy is not included in the strata area. All floor plans, areas and measurements stated herein are approximate only and are subject to final survey. Please refer to the key plan for orientation. The plans are subject to change as may be required by the relevant authorities. The balcony shall not be enclosed unless with the approved balcony screen, more particularly illustrated under the header "Approved Balcony Screen". Please refer to the letter containing the Particulars, Documents and Information (PDI) relating to the unit and the development, for the area breakdown and floor plan relating to the unit you intend to purchase. The Sale and Purchase Agreement contains the entire agreement between the developer and the purchaser and supersedes and cancels in all respects all previous representations, warranties, promises, inducements or statements of intention, whether written or oral made by the developer and/or the developer's agent(s) which are not embodied in the Sale and Purchase Agreement.

2-BEDROOM

Type B1
60 sq m / 646 sq ft

#35-06 to #36-06
#40-06 to #44-06



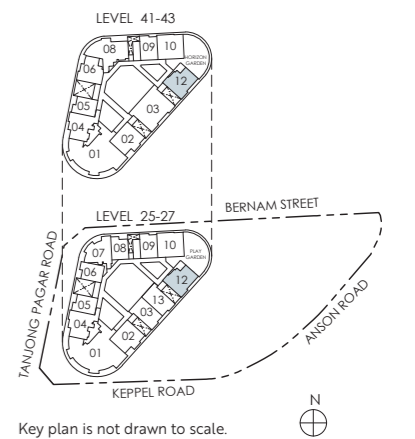
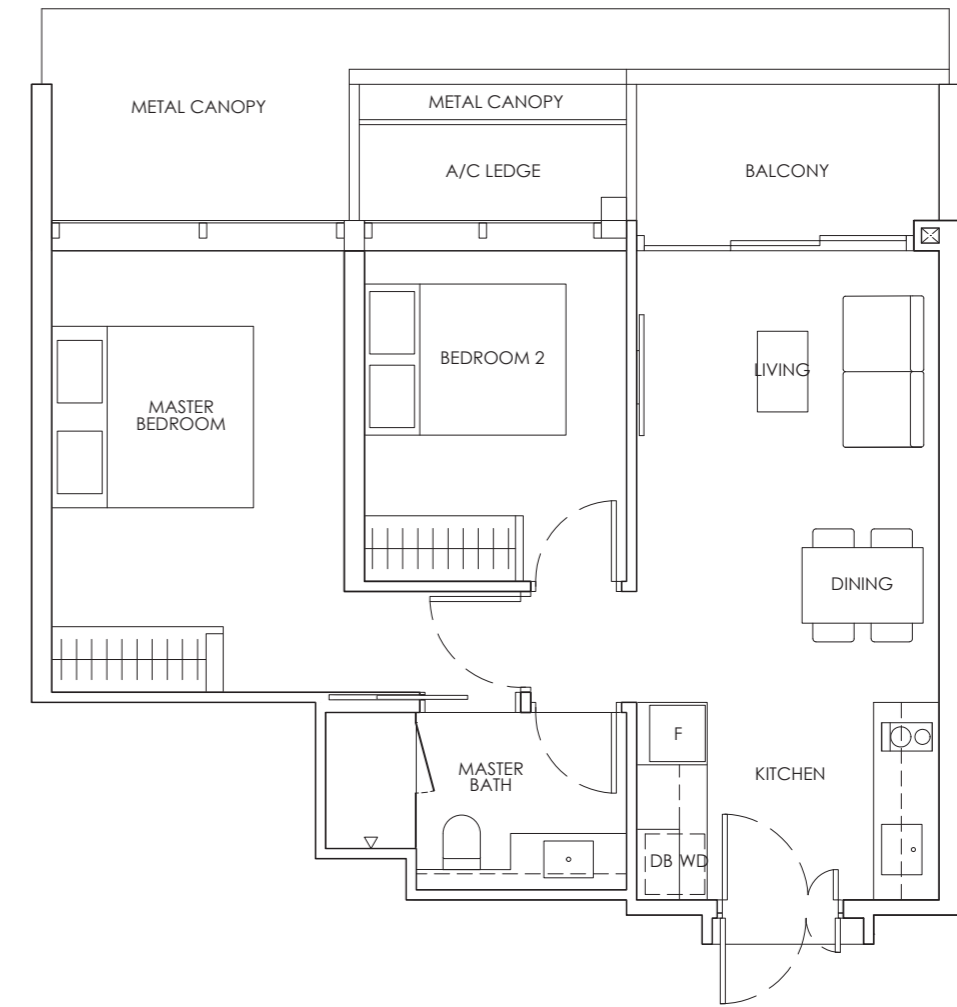
Legend (where applicable)
DB Distribution Board **WD** Washer cum Dryer **W/D** Washer and Dryer **F** Fridge **WC** Water Closet
ST Storage **HS** Household Shelter **A/C** Air-Conditioner **•** Mirror Image

Strata area includes air-conditioner (A/C) ledge, balcony and strata void where applicable. Metal canopy is not included in the strata area. All floor plans, areas and measurements stated herein are approximate only and are subject to final survey. Please refer to the key plan for orientation. The plans are subject to change as may be required by the relevant authorities. The balcony shall not be enclosed unless with the approved balcony screen, more particularly illustrated under the header "Approved Balcony Screen". Please refer to the letter containing the Particulars, Documents and Information (PDI) relating to the unit and the development, for the area breakdown and floor plan relating to the unit you intend to purchase. The Sale and Purchase Agreement contains the entire agreement between the developer and the purchaser and supersedes and cancels in all respects all previous representations, warranties, promises, inducements or statements of intention, whether written or oral made by the developer and/or the developer's agent(s) which are not embodied in the Sale and Purchase Agreement.

2-BEDROOM

Type B2
63 sq m / 678 sq ft

#25-12 to #27-12
#41-12 to #43-12



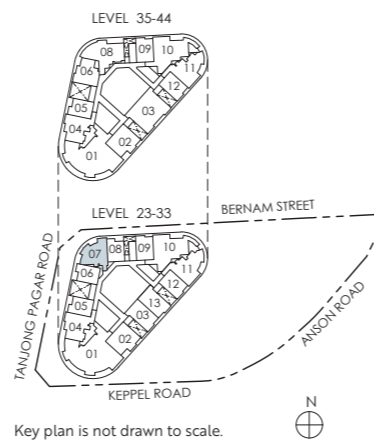
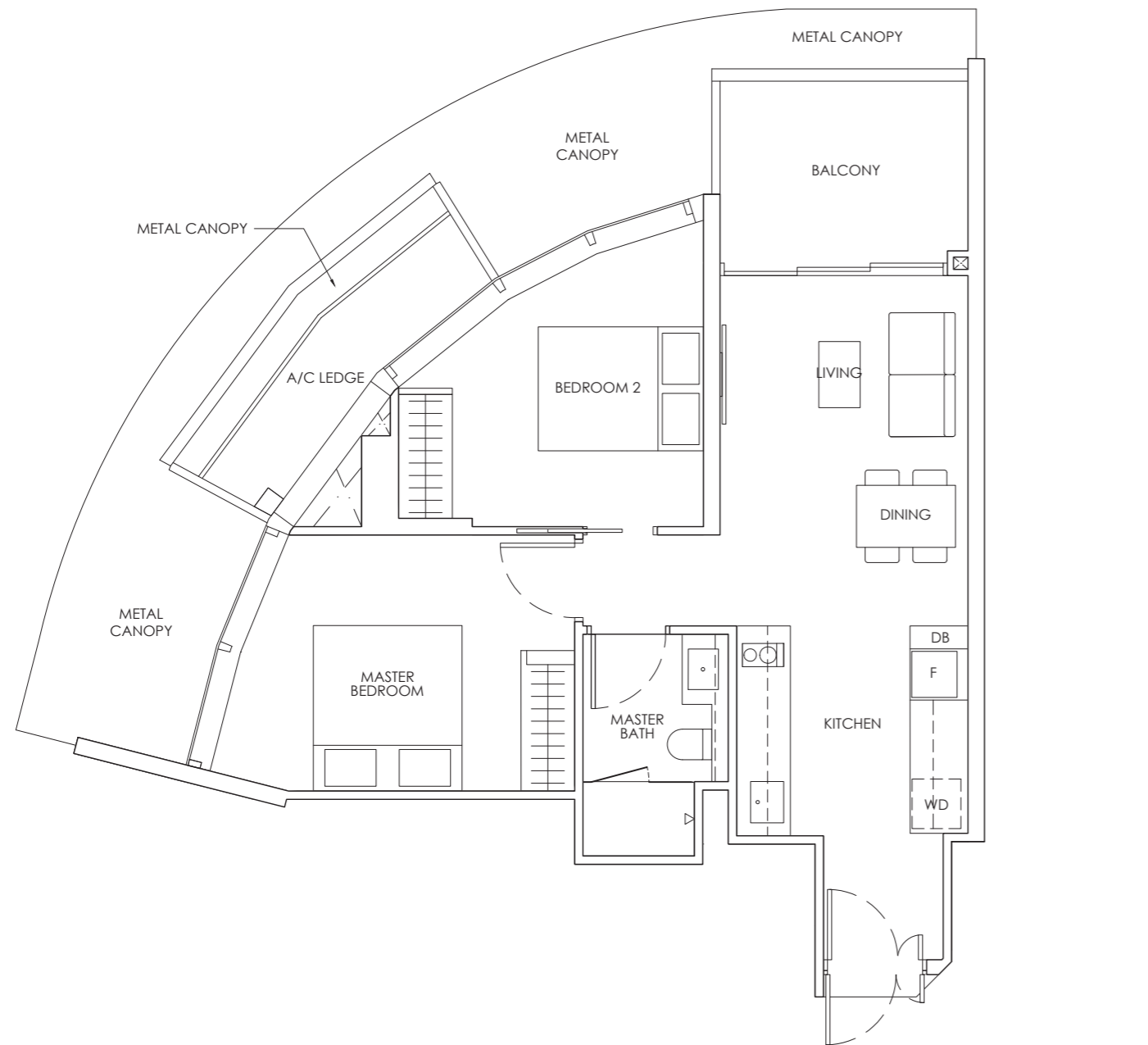
Legend (where applicable)
DB Distribution Board **WD** Washer cum Dryer **W/D** Washer and Dryer **F** Fridge **WC** Water Closet
ST Storage **HS** Household Shelter **A/C** Air-Conditioner **•** Mirror Image

Strata area includes air-conditioner (A/C) ledge, balcony and strata void where applicable. Metal canopy is not included in the strata area. All floor plans, areas and measurements stated herein are approximate only and are subject to final survey. Please refer to the key plan for orientation. The plans are subject to change as may be required by the relevant authorities. The balcony shall not be enclosed unless with the approved balcony screen, more particularly illustrated under the header "Approved Balcony Screen". Please refer to the letter containing the Particulars, Documents and Information (PDI) relating to the unit and the development, for the area breakdown and floor plan relating to the unit you intend to purchase. The Sale and Purchase Agreement contains the entire agreement between the developer and the purchaser and supersedes and cancels in all respects all previous representations, warranties, promises, inducements or statements of intention, whether written or oral made by the developer and/or the developer's agent(s) which are not embodied in the Sale and Purchase Agreement.

2-BEDROOM

Type B3
70 sq m / 753 sq ft

#23-07 to #33-07



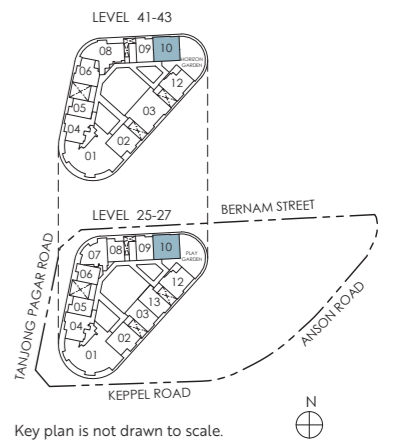
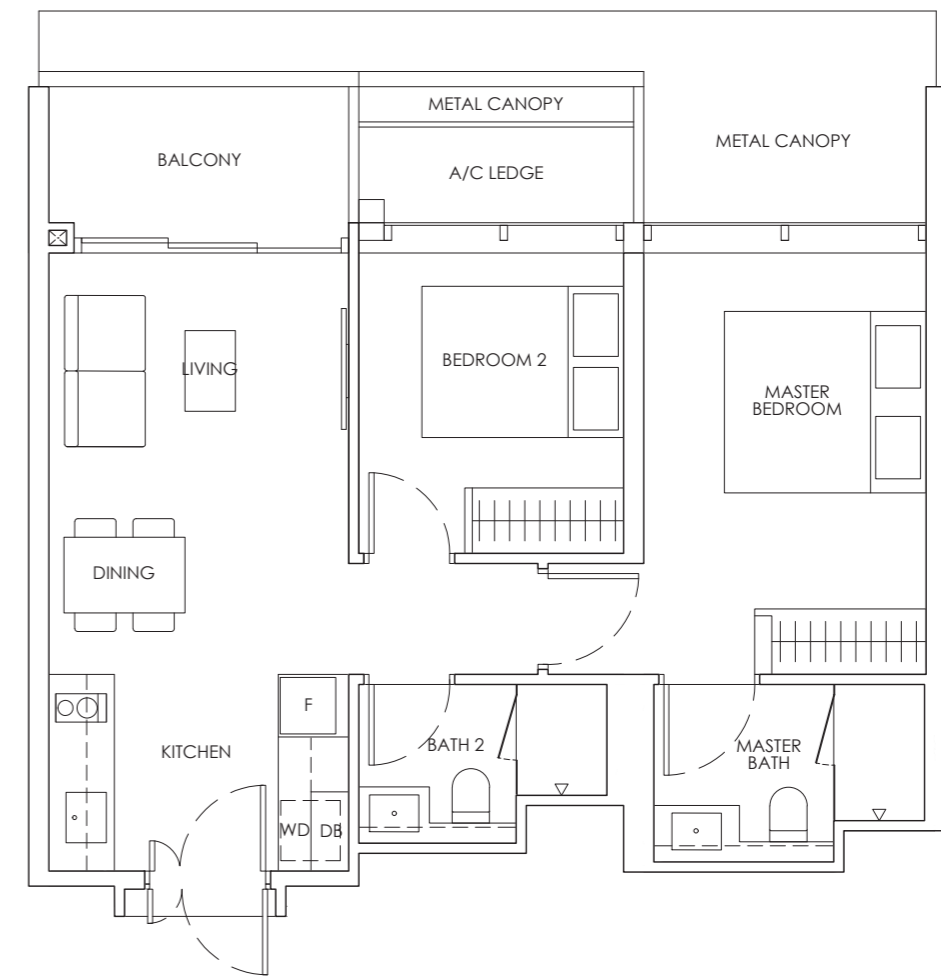
Legend (where applicable)
DB Distribution Board **WD** Washer cum Dryer **W/D** Washer and Dryer **F** Fridge **WC** Water Closet
ST Storage **HS** Household Shelter **A/C** Air-Conditioner **•** Mirror Image

Strata area includes air-conditioner (A/C) ledge, balcony and strata void where applicable. Metal canopy is not included in the strata area. All floor plans, areas and measurements stated herein are approximate only and are subject to final survey. Please refer to the key plan for orientation. The plans are subject to change as may be required by the relevant authorities. The balcony shall not be enclosed unless with the approved balcony screen, more particularly illustrated under the header "Approved Balcony Screen". Please refer to the letter containing the Particulars, Documents and Information (PDI) relating to the unit and the development, for the area breakdown and floor plan relating to the unit you intend to purchase. The Sale and Purchase Agreement contains the entire agreement between the developer and the purchaser and supersedes and cancels in all respects all previous representations, warranties, promises, inducements or statements of intention, whether written or oral made by the developer and/or the developer's agent(s) which are not embodied in the Sale and Purchase Agreement.

2-BEDROOM PREMIUM

Type BP1
64 sq m / 689 sq ft

#25-10 to #27-10
#41-10 to #43-10



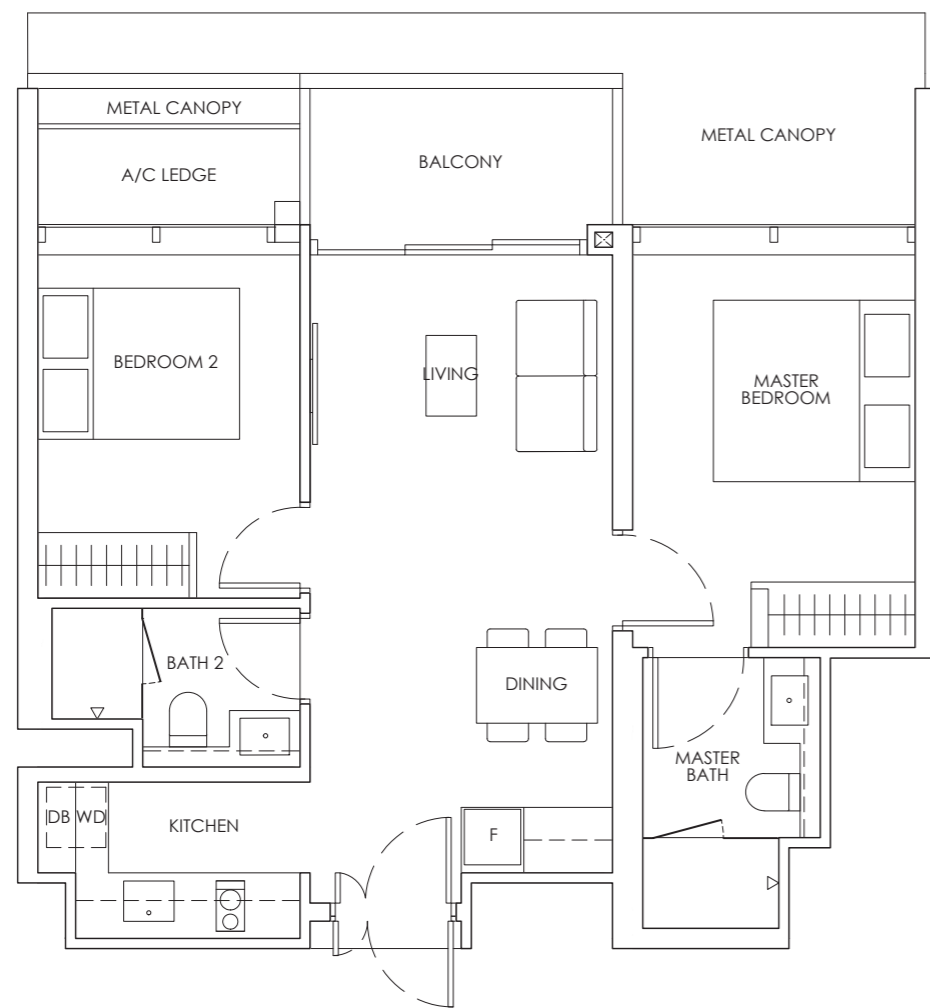
Legend (where applicable)
DB Distribution Board **WD** Washer cum Dryer **W/D** Washer and Dryer **F** Fridge **WC** Water Closet
ST Storage **HS** Household Shelter **A/C** Air-Conditioner **•** Mirror Image

Strata area includes air-conditioner (A/C) ledge, balcony and strata void where applicable. Metal canopy is not included in the strata area. All floor plans, areas and measurements stated herein are approximate only and are subject to final survey. Please refer to the key plan for orientation. The plans are subject to change as may be required by the relevant authorities. The balcony shall not be enclosed unless with the approved balcony screen, more particularly illustrated under the header "Approved Balcony Screen". Please refer to the letter containing the Particulars, Documents and Information (PDI) relating to the unit and the development, for the area breakdown and floor plan relating to the unit you intend to purchase. The Sale and Purchase Agreement contains the entire agreement between the developer and the purchaser and supersedes and cancels in all respects all previous representations, warranties, promises, inducements or statements of intention, whether written or oral made by the developer and/or the developer's agent(s) which are not embodied in the Sale and Purchase Agreement.

2-BEDROOM PREMIUM

Type BP2
66 sq m / 710 sq ft

#23-02 to #33-02
#35-02 to #44-02

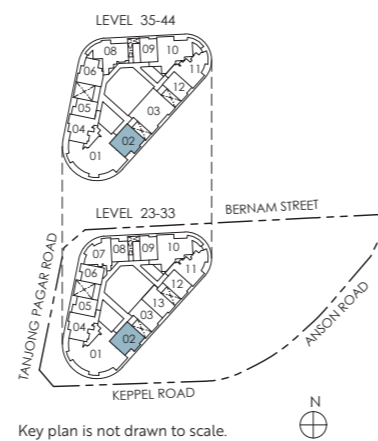


SCAN TO VIEW
VIRTUAL TOUR



Legend (where applicable)
DB Distribution Board **WD** Washer cum Dryer **W/D** Washer and Dryer **F** Fridge **WC** Water Closet
ST Storage **HS** Household Shelter **A/C** Air-Conditioner **M** Mirror Image

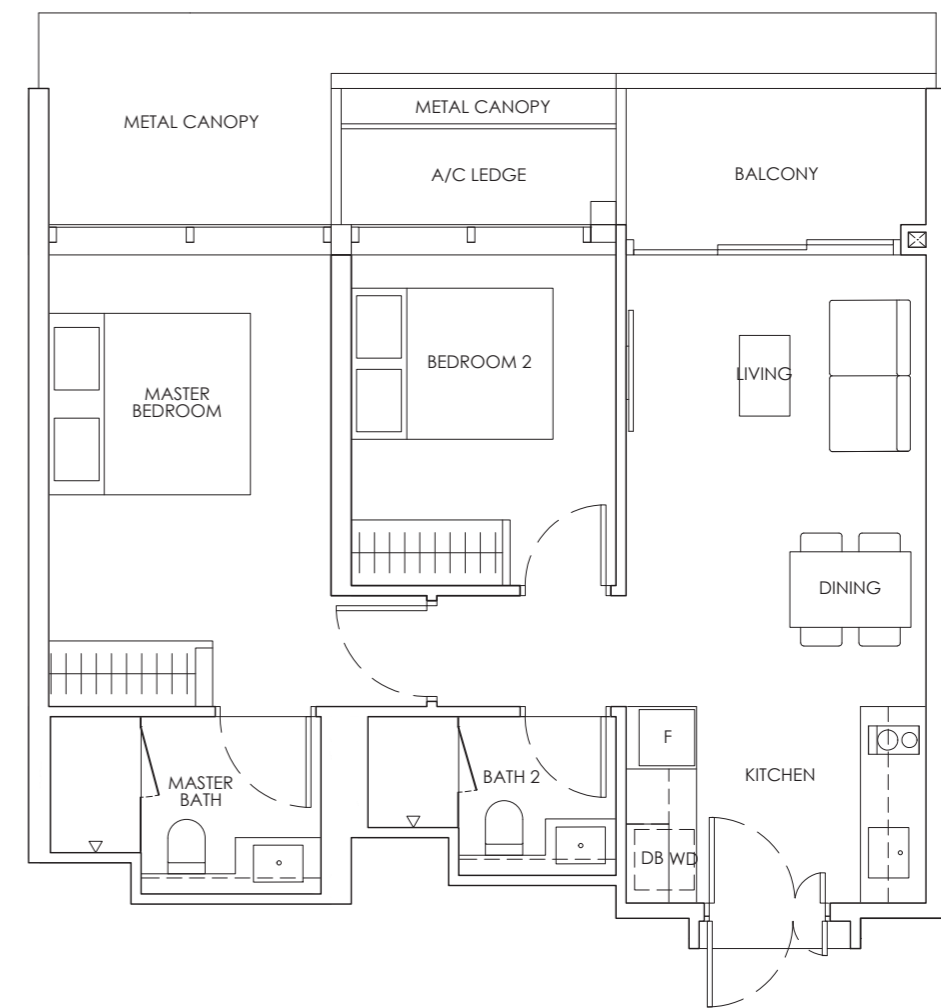
Strata area includes air-conditioner (A/C) ledge, balcony and strata void where applicable. Metal canopy is not included in the strata area. All floor plans, areas and measurements stated herein are approximate only and are subject to final survey. Please refer to the key plan for orientation. The plans are subject to change as may be required by the relevant authorities. The balcony shall not be enclosed unless with the approved balcony screen, more particularly illustrated under the header "Approved Balcony Screen". Please refer to the letter containing the Particulars, Documents and Information (PDI) relating to the unit and the development, for the area breakdown and floor plan relating to the unit you intend to purchase. The Sale and Purchase Agreement contains the entire agreement between the developer and the purchaser and supersedes and cancels in all respects all previous representations, warranties, promises, inducements or statements of intention, whether written or oral made by the developer and/or the developer's agent(s) which are not embodied in the Sale and Purchase Agreement.



2-BEDROOM PREMIUM

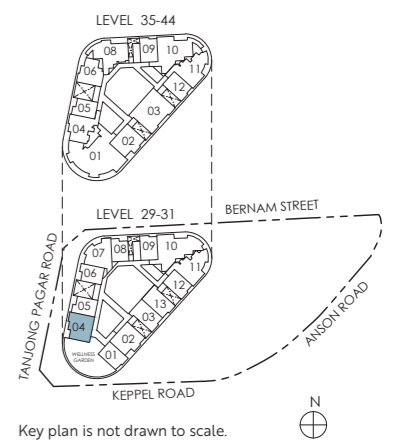
Type BP3
66 sq m / 710 sq ft

#29-04 to #31-04



Legend (where applicable)
DB Distribution Board **WD** Washer cum Dryer **W/D** Washer and Dryer **F** Fridge **WC** Water Closet
ST Storage **HS** Household Shelter **A/C** Air-Conditioner **M** Mirror Image

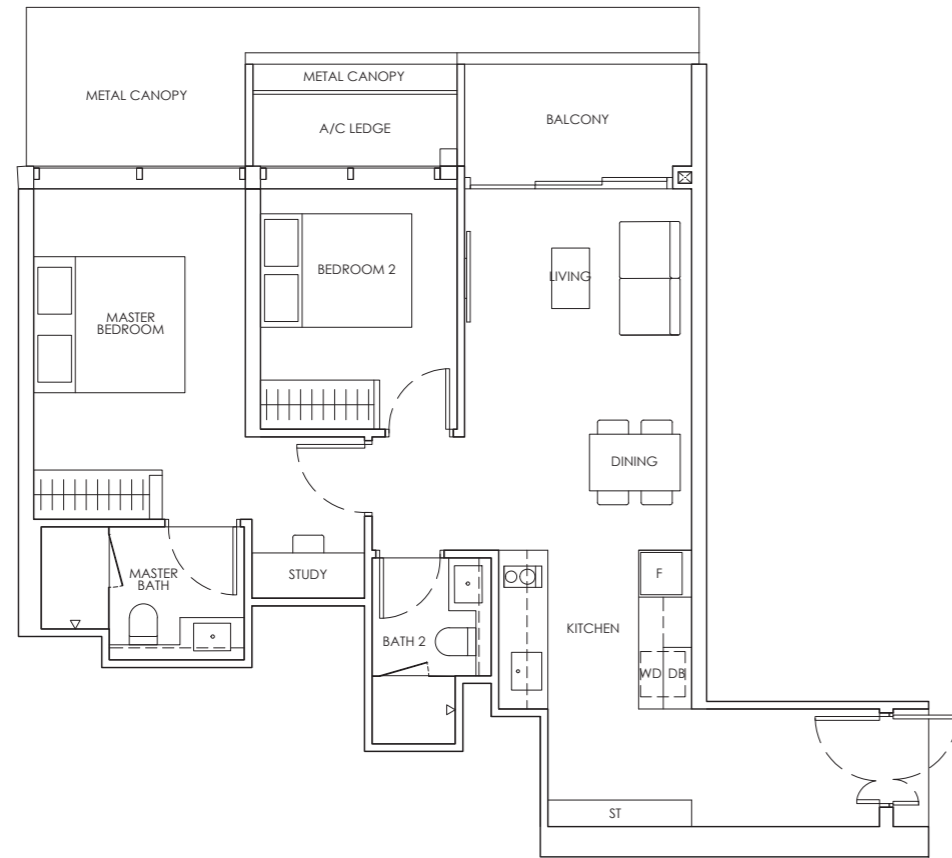
Strata area includes air-conditioner (A/C) ledge, balcony and strata void where applicable. Metal canopy is not included in the strata area. All floor plans, areas and measurements stated herein are approximate only and are subject to final survey. Please refer to the key plan for orientation. The plans are subject to change as may be required by the relevant authorities. The balcony shall not be enclosed unless with the approved balcony screen, more particularly illustrated under the header "Approved Balcony Screen". Please refer to the letter containing the Particulars, Documents and Information (PDI) relating to the unit and the development, for the area breakdown and floor plan relating to the unit you intend to purchase. The Sale and Purchase Agreement contains the entire agreement between the developer and the purchaser and supersedes and cancels in all respects all previous representations, warranties, promises, inducements or statements of intention, whether written or oral made by the developer and/or the developer's agent(s) which are not embodied in the Sale and Purchase Agreement.



2-BEDROOM PREMIUM + ENSUITE STUDY

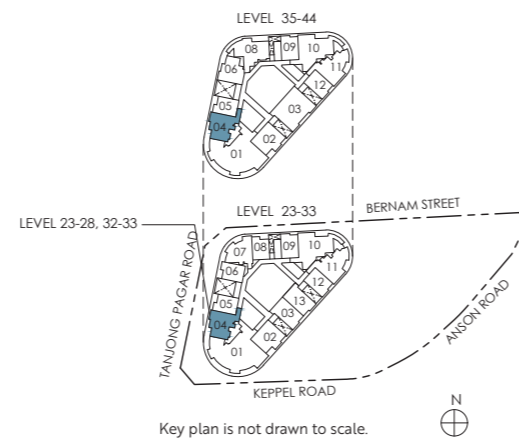
Type BPS1
76 sq m / 818 sq ft

#23-04 to #28-04
#32-04 to #33-04
#35-04 to #44-04



Legend (where applicable)
DB Distribution Board **WD** Washer cum Dryer **W/D** Washer and Dryer **F** Fridge **WC** Water Closet
ST Storage **HS** Household Shelter **A/C** Air-Conditioner **M** Mirror Image

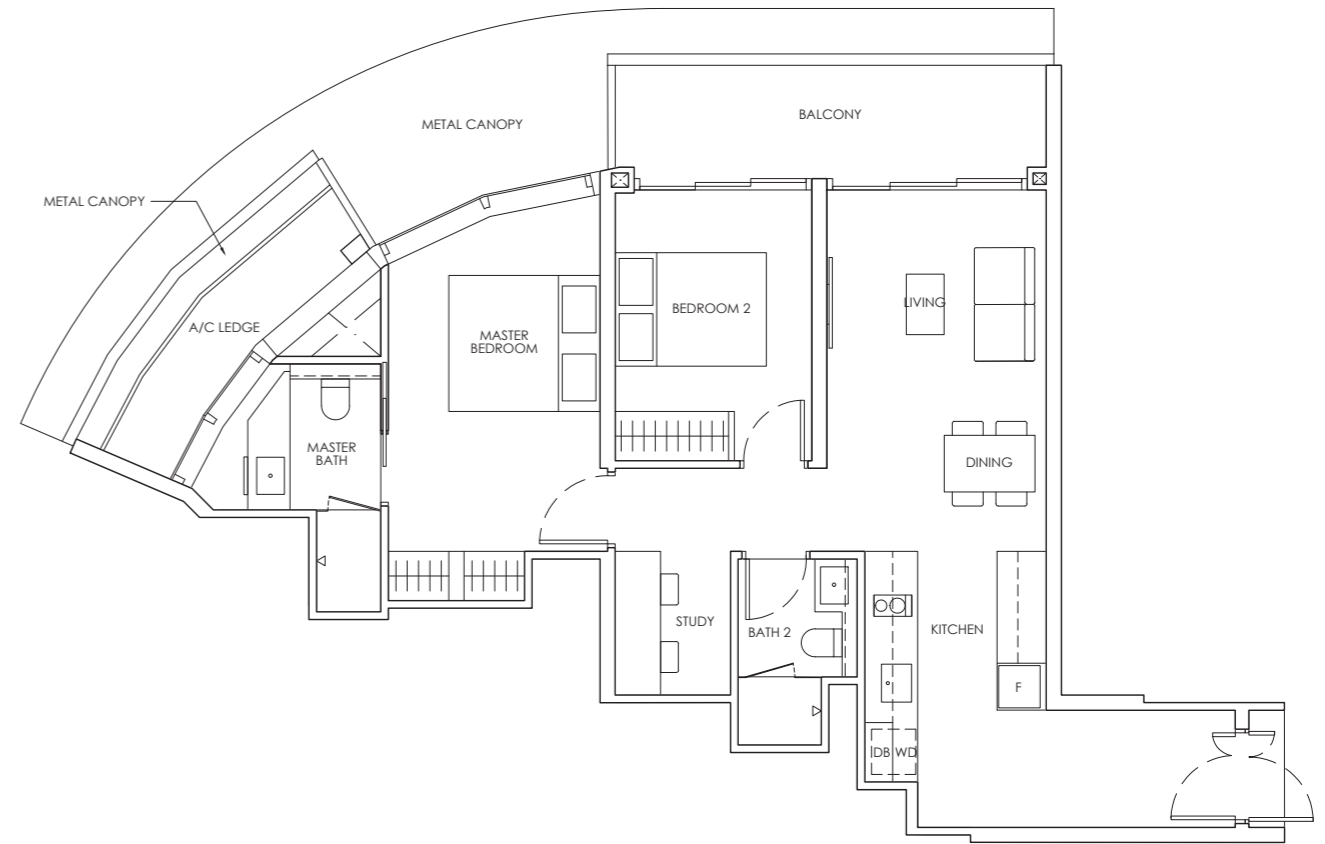
Strata area includes air-conditioner (A/C) ledge, balcony and strata void where applicable. Metal canopy is not included in the strata area. All floor plans, areas and measurements stated herein are approximate only and are subject to final survey. Please refer to the key plan for orientation. The plans are subject to change as may be required by the relevant authorities. The balcony shall not be enclosed unless with the approved balcony screen, more particularly illustrated under the header "Approved Balcony Screen". Please refer to the letter containing the Particulars, Documents and Information (PDI) relating to the unit and the development, for the area breakdown and floor plan relating to the unit you intend to purchase. The Sale and Purchase Agreement contains the entire agreement between the developer and the purchaser and supersedes and cancels in all respects all previous representations, warranties, promises, inducements or statements of intention, whether written or oral made by the developer and/or the developer's agent(s) which are not embodied in the Sale and Purchase Agreement.



2-BEDROOM PREMIUM + STUDY

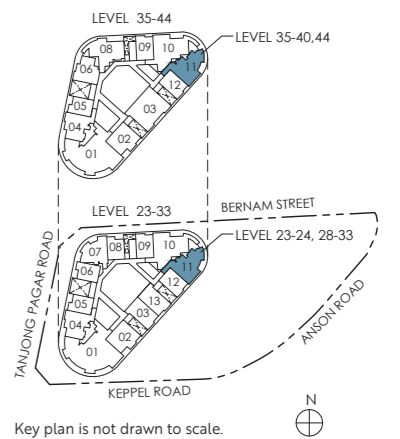
Type BPS2
86 sq m / 926 sq ft

#23-11 to #24-11
#28-11 to #33-11
#35-11 to #40-11
#44-11



Legend (where applicable)
DB Distribution Board **WD** Washer cum Dryer **W/D** Washer and Dryer **F** Fridge **WC** Water Closet
ST Storage **HS** Household Shelter **A/C** Air-Conditioner **M** Mirror Image

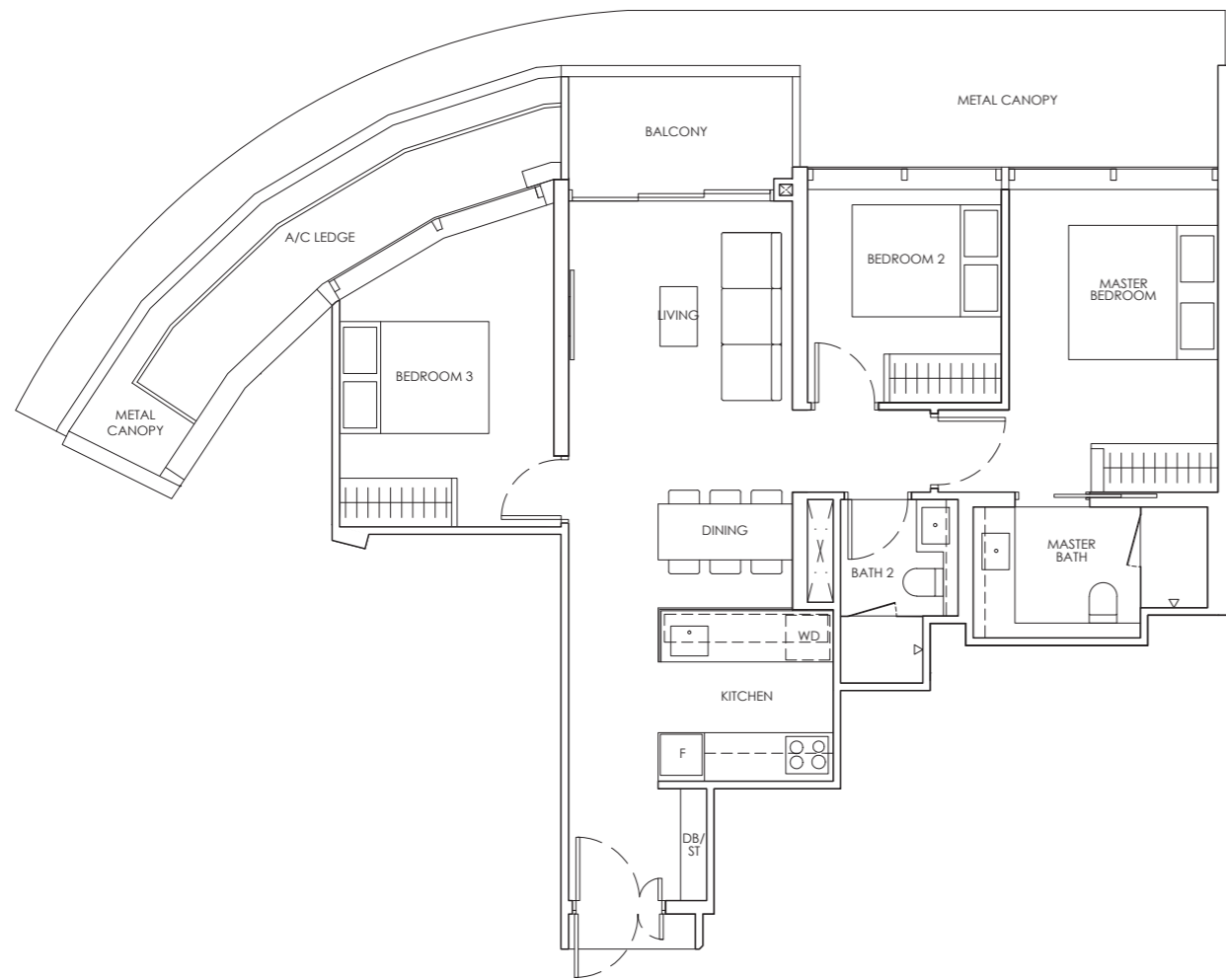
Strata area includes air-conditioner (A/C) ledge, balcony and strata void where applicable. Metal canopy is not included in the strata area. All floor plans, areas and measurements stated herein are approximate only and are subject to final survey. Please refer to the key plan for orientation. The plans are subject to change as may be required by the relevant authorities. The balcony shall not be enclosed unless with the approved balcony screen, more particularly illustrated under the header "Approved Balcony Screen". Please refer to the letter containing the Particulars, Documents and Information (PDI) relating to the unit and the development, for the area breakdown and floor plan relating to the unit you intend to purchase. The Sale and Purchase Agreement contains the entire agreement between the developer and the purchaser and supersedes and cancels in all respects all previous representations, warranties, promises, inducements or statements of intention, whether written or oral made by the developer and/or the developer's agent(s) which are not embodied in the Sale and Purchase Agreement.



3-BEDROOM

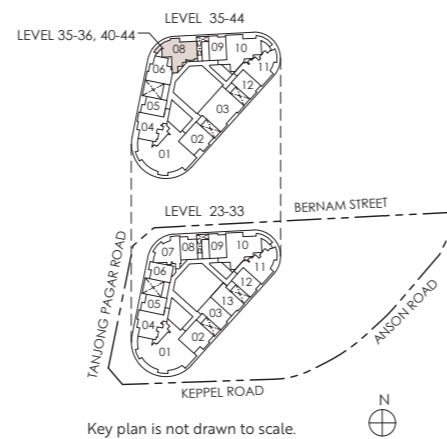
Type C1
91 sq m / 980 sq ft

#35-08 to #36-08
#40-08 to #44-08



Legend (where applicable)
DB Distribution Board **WD** Washer cum Dryer **W/D** Washer and Dryer **F** Fridge **WC** Water Closet
ST Storage **HS** Household Shelter **A/C** Air-Conditioner **M** Mirror Image

Strata area includes air-conditioner (A/C) ledge, balcony and strata void where applicable. Metal canopy is not included in the strata area. All floor plans, areas and measurements stated herein are approximate only and are subject to final survey. Please refer to the key plan for orientation. The plans are subject to change as may be required by the relevant authorities. The balcony shall not be enclosed unless with the approved balcony screen, more particularly illustrated under the header "Approved Balcony Screen". Please refer to the letter containing the Particulars, Documents and Information (PDI) relating to the unit and the development, for the area breakdown and floor plan relating to the unit you intend to purchase. The Sale and Purchase Agreement contains the entire agreement between the developer and the purchaser and supersedes and cancels in all respects all previous representations, warranties, promises, inducements or statements of intention, whether written or oral made by the developer and/or the developer's agent(s) which are not embodied in the Sale and Purchase Agreement.

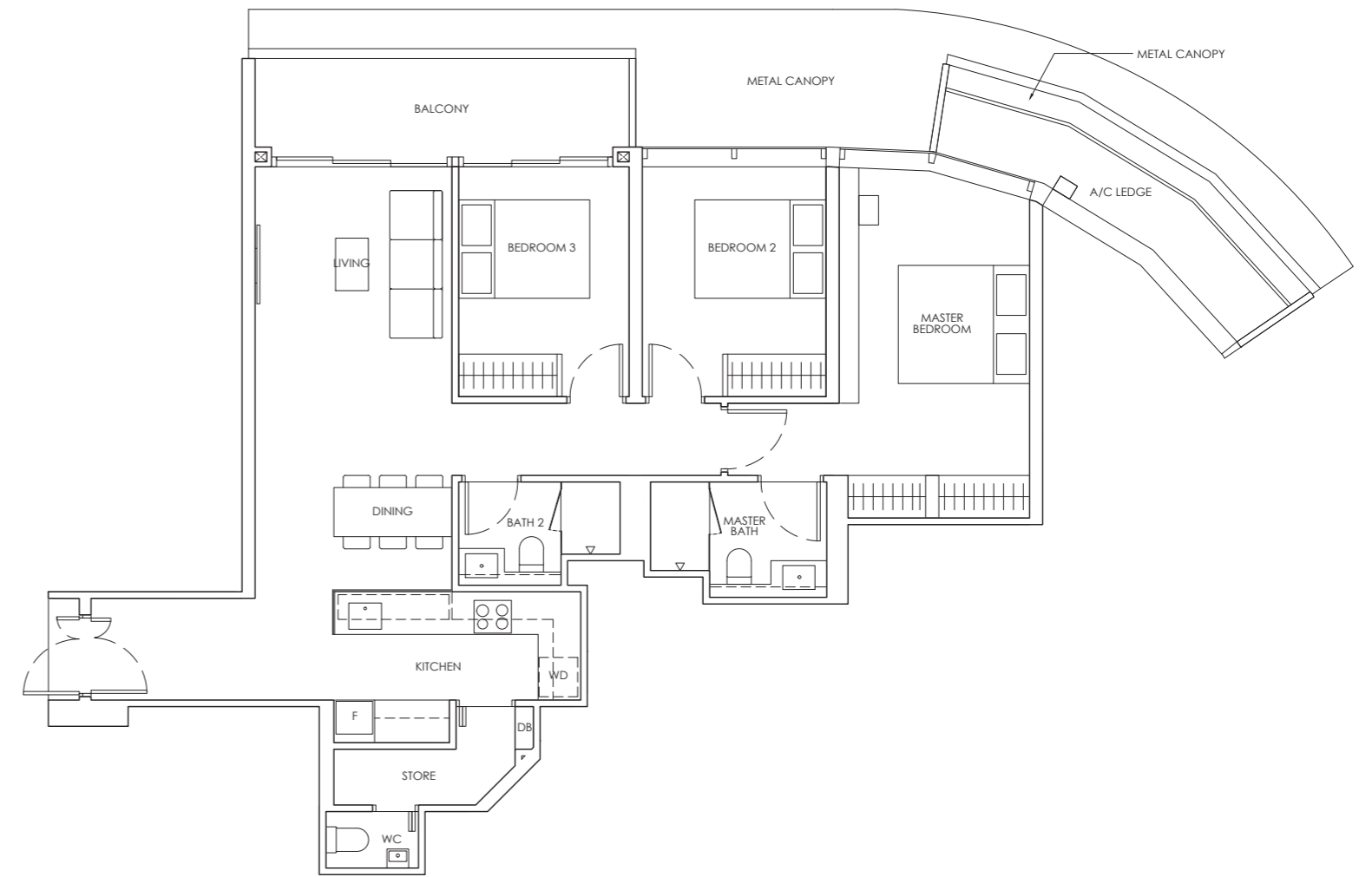


Key plan is not drawn to scale.

3-BEDROOM PREMIUM

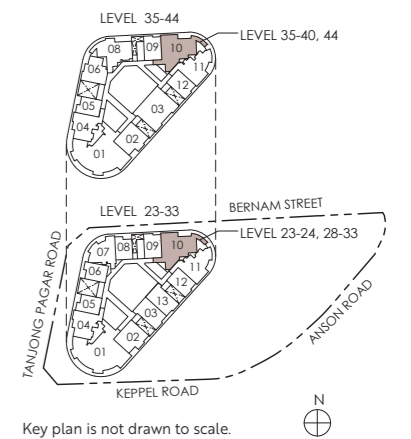
Type CP1
112 sq m / 1206 sq ft

#23-10 to #24-10
#28-10 to #33-10
#35-10 to #40-10
#44-10



Legend (where applicable)
DB Distribution Board **WD** Washer cum Dryer **W/D** Washer and Dryer **F** Fridge **WC** Water Closet
ST Storage **HS** Household Shelter **A/C** Air-Conditioner **M** Mirror Image

Strata area includes air-conditioner (A/C) ledge, balcony and strata void where applicable. Metal canopy is not included in the strata area. All floor plans, areas and measurements stated herein are approximate only and are subject to final survey. Please refer to the key plan for orientation. The plans are subject to change as may be required by the relevant authorities. The balcony shall not be enclosed unless with the approved balcony screen, more particularly illustrated under the header "Approved Balcony Screen". Please refer to the letter containing the Particulars, Documents and Information (PDI) relating to the unit and the development, for the area breakdown and floor plan relating to the unit you intend to purchase. The Sale and Purchase Agreement contains the entire agreement between the developer and the purchaser and supersedes and cancels in all respects all previous representations, warranties, promises, inducements or statements of intention, whether written or oral made by the developer and/or the developer's agent(s) which are not embodied in the Sale and Purchase Agreement.

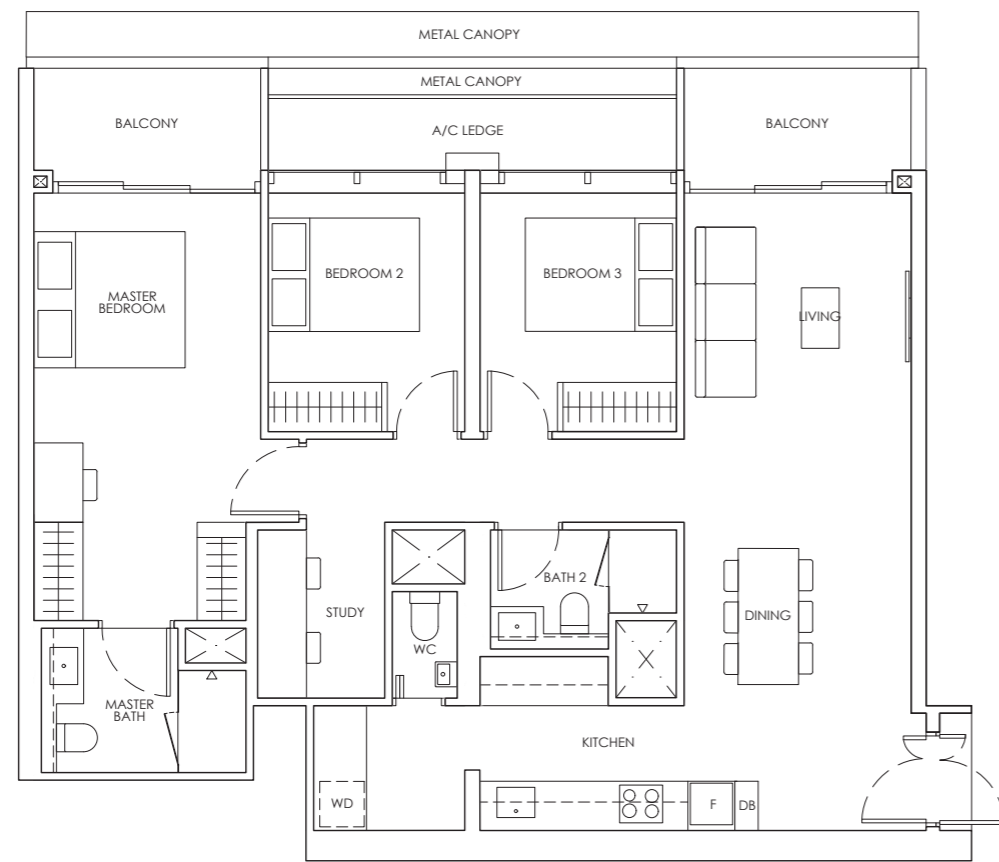


Key plan is not drawn to scale.

3-BEDROOM PREMIUM + STUDY

Type CPS1
114 sq m / 1227 sq ft

#35-03 to #44-03

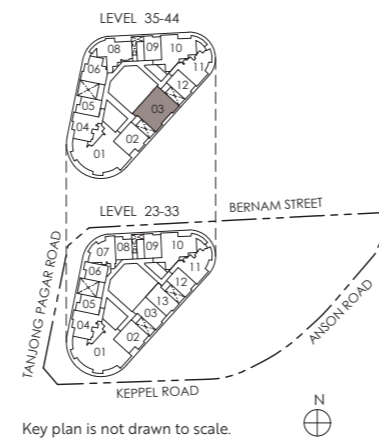


SCAN TO VIEW
VIRTUAL TOUR



Legend (where applicable)
DB Distribution Board **WD** Washer cum Dryer **W/D** Washer and Dryer **F** Fridge **WC** Water Closet
ST Storage **HS** Household Shelter **A/C** Air-Conditioner **•** Mirror Image

Strata area includes air-conditioner (A/C) ledge, balcony and strata void where applicable. Metal canopy is not included in the strata area. All floor plans, areas and measurements stated herein are approximate only and are subject to final survey. Please refer to the key plan for orientation. The plans are subject to change as may be required by the relevant authorities. The balcony shall not be enclosed unless with the approved balcony screen, more particularly illustrated under the header "Approved Balcony Screen". Please refer to the letter containing the Particulars, Documents and Information (PDI) relating to the unit and the development, for the area breakdown and floor plan relating to the unit you intend to purchase. The Sale and Purchase Agreement contains the entire agreement between the developer and the purchaser and supersedes and cancels in all respects all previous representations, warranties, promises, inducements or statements of intention, whether written or oral made by the developer and/or the developer's agent(s) which are not embodied in the Sale and Purchase Agreement.



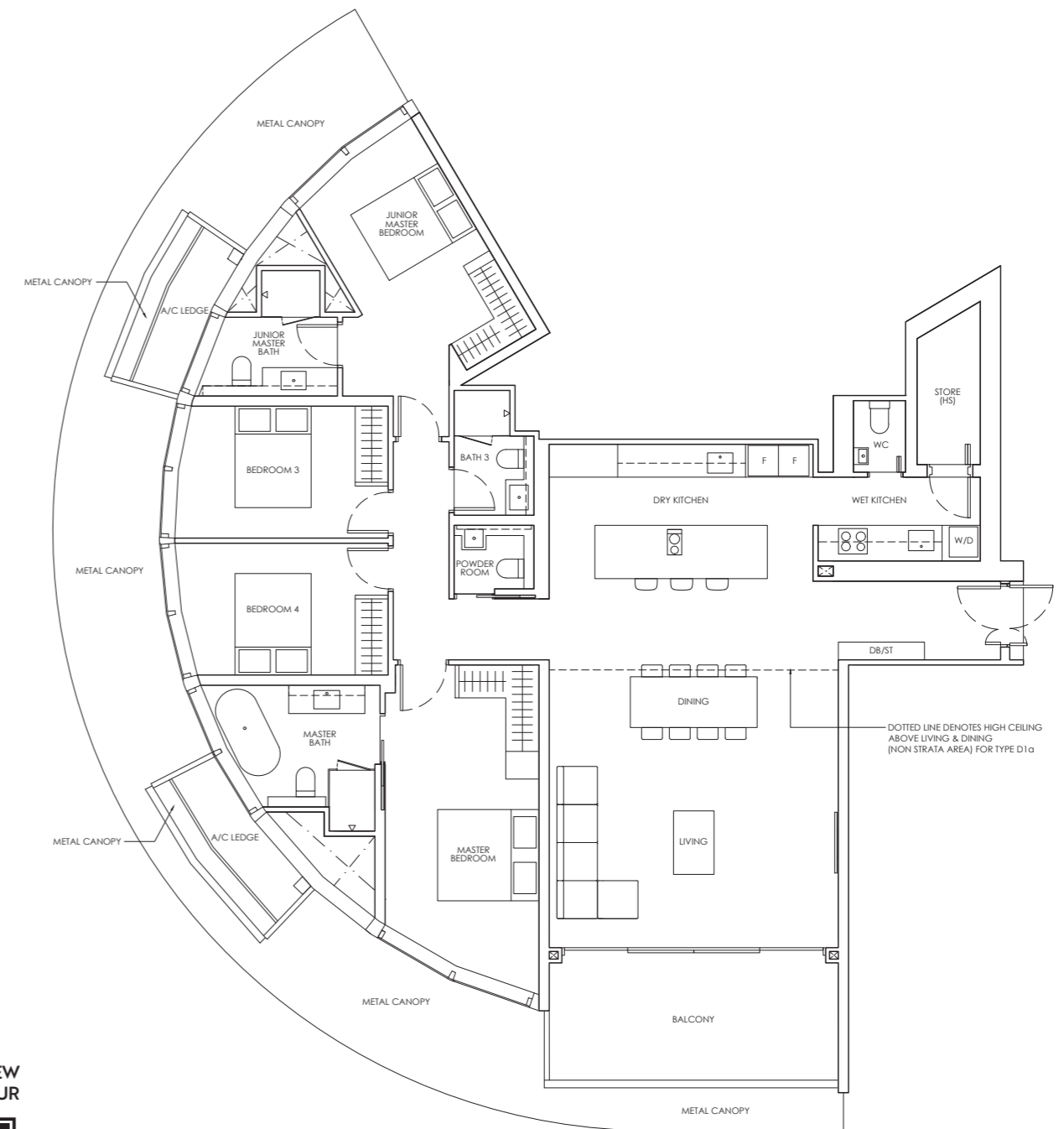
4-BEDROOM PREMIUM

Type D1
192 sq m / 2067 sq ft

#23-01 to #27-01
#32-01 to #33-01
#35-01 to #44-01

Type D1a
192 sq m / 2067 sq ft

#28-01



SCAN TO VIEW
VIRTUAL TOUR



Legend (where applicable)
DB Distribution Board **WD** Washer cum Dryer **W/D** Washer and Dryer **F** Fridge **WC** Water Closet
ST Storage **HS** Household Shelter **A/C** Air-Conditioner **•** Mirror Image

Strata area includes air-conditioner (A/C) ledge, balcony and strata void where applicable. Metal canopy is not included in the strata area. All floor plans, areas and measurements stated herein are approximate only and are subject to final survey. Please refer to the key plan for orientation. The plans are subject to change as may be required by the relevant authorities. The balcony shall not be enclosed unless with the approved balcony screen, more particularly illustrated under the header "Approved Balcony Screen". Please refer to the letter containing the Particulars, Documents and Information (PDI) relating to the unit and the development, for the area breakdown and floor plan relating to the unit you intend to purchase. The Sale and Purchase Agreement contains the entire agreement between the developer and the purchaser and supersedes and cancels in all respects all previous representations, warranties, promises, inducements or statements of intention, whether written or oral made by the developer and/or the developer's agent(s) which are not embodied in the Sale and Purchase Agreement.

