

# Studio

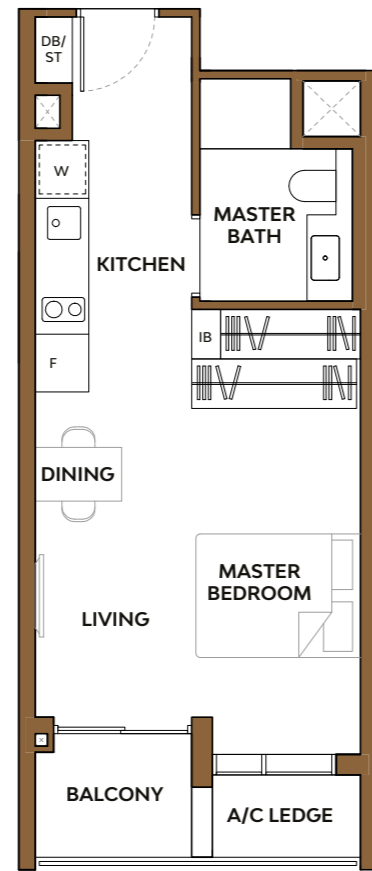
## Type A1

Area: 40 sq m  
(include Balcony 3 sq m, A/C ledge 2 sq m)

### Unit(s)

#04-36 TO #19-36

#04-39 TO #19-39



# Studio

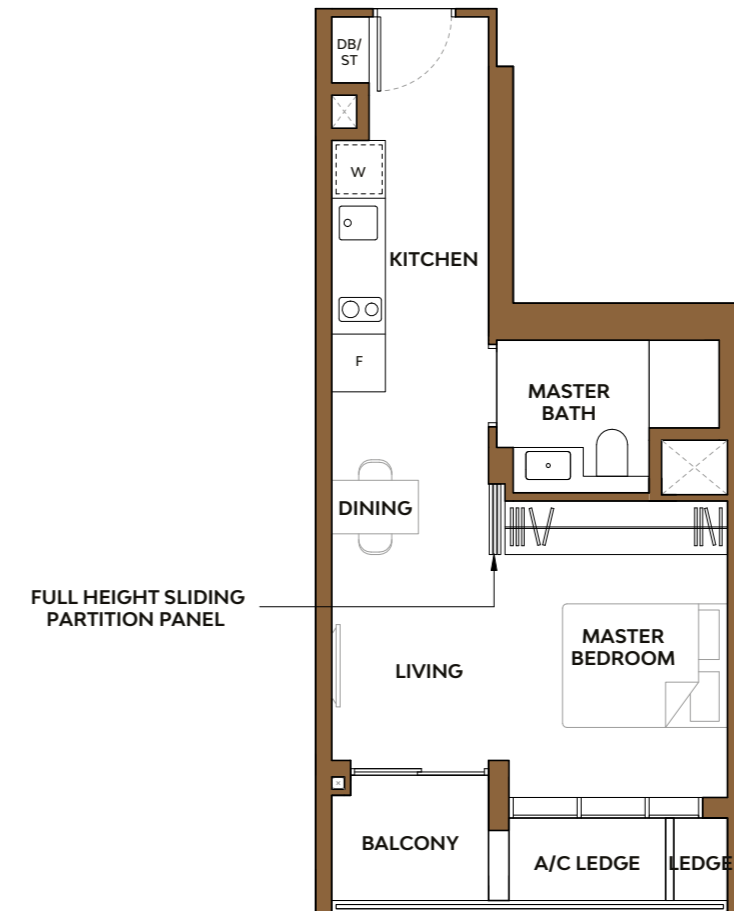
## Type A2

Area: 42 sq m  
(include Balcony 3 sq m, A/C ledge 2 sq m)

### Unit(s)

#04-37\* TO #19-37\*

#04-38 TO #19-38



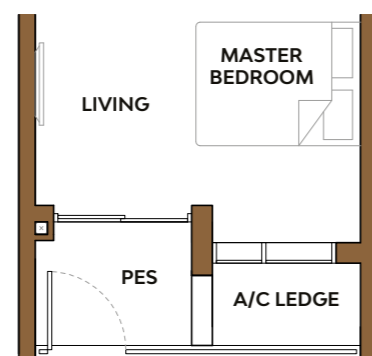
## Type A1-P

Area: 40 sq m  
(include PES 3 sq m, A/C ledge 2 sq m)

### Unit(s)

#03-36

#03-39



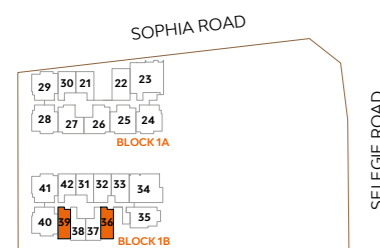
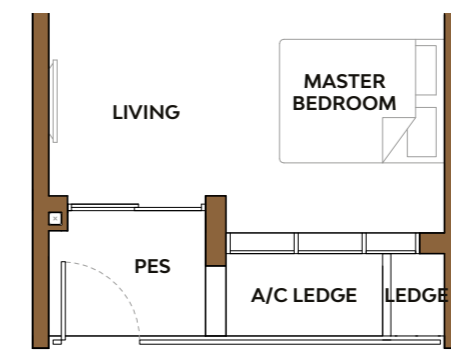
## Type A2-P

Area: 42 sq m  
(include PES 3 sq m, A/C ledge 2 sq m)

### Unit(s)

#03-37\*

#03-38

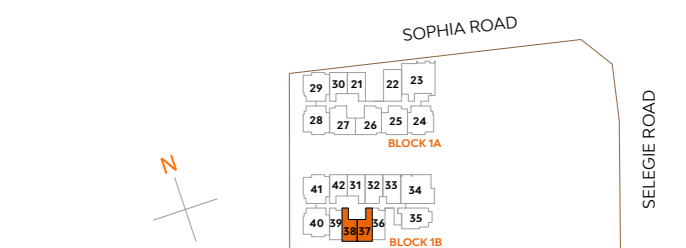


### LEGEND:

IB: IRONING BOARD

Note: \*Mirror Image

Plans are subject to change/amendments as may be required and/or approved by the Developer and/or the relevant authorities and do not form part of any offer or contract. These are not drawn to scale and are for the purpose of visual representation only. The balcony shall not be enclosed unless with the approved balcony screen. For an illustration of the approved balcony screen, please refer to APPROVED BALCONY SCREEN DESIGN page of this brochure.



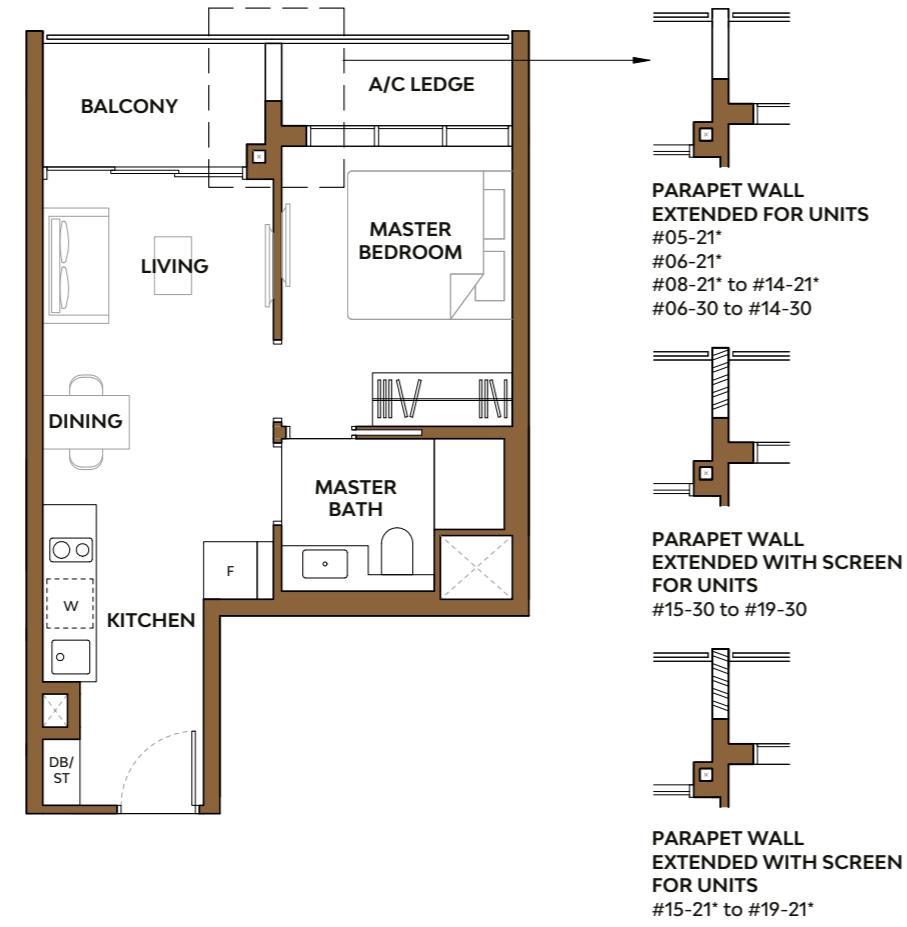
# 1-Bedroom Suite

## Type 1B1

Area: 45 sq m  
(include Balcony 5 sq m, A/C ledge 3 sq m)

### Unit(s)

- #05-21\*
- #06-21\*
- #08-21\* TO #19-21\*
- #06-30 TO #19-30
- #04-31\* TO #19-31\*
- #04-42 TO #19-42



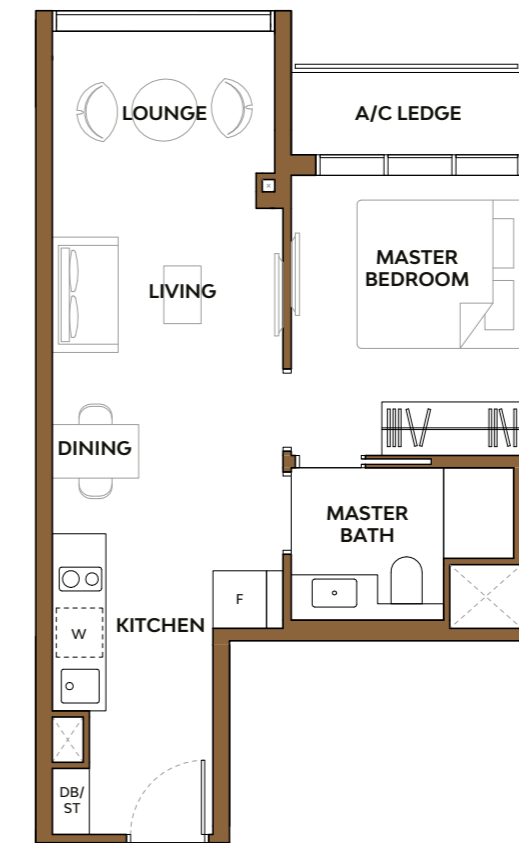
# 1-Bedroom Suite

## Type 1B2

Area: 47 sq m (include A/C ledge 3 sq m)

### Unit(s)

- #04-21\*
- #07-21\*
- #05-30

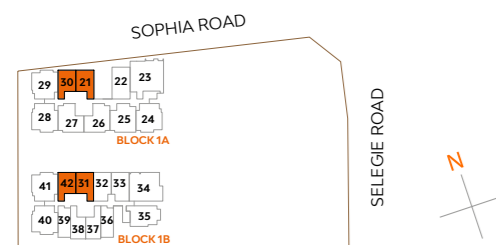
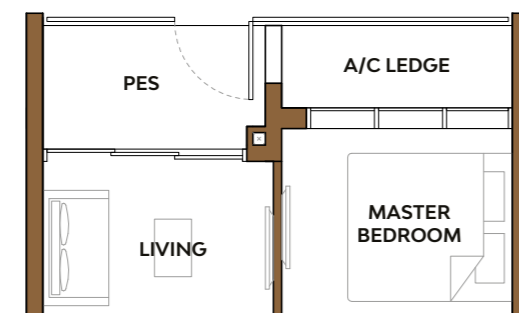


## Type 1B1-P

Area: 45 sq m  
(include PES 5 sq m, A/C ledge 3 sq m)

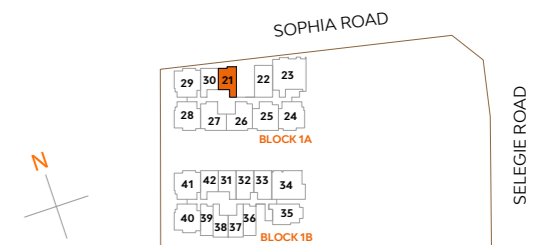
### Unit(s)

- #03-21\*
- #03-31\*
- #03-42



Note: \*Mirror Image

Plans are subject to change/amendments as may be required and/or approved by the Developer and/or the relevant authorities and do not form part of any offer or contract. These are not drawn to scale and are for the purpose of visual representation only. The balcony shall not be enclosed unless with the approved balcony screen. For an illustration of the approved balcony screen, please refer to APPROVED BALCONY SCREEN DESIGN page of this brochure.



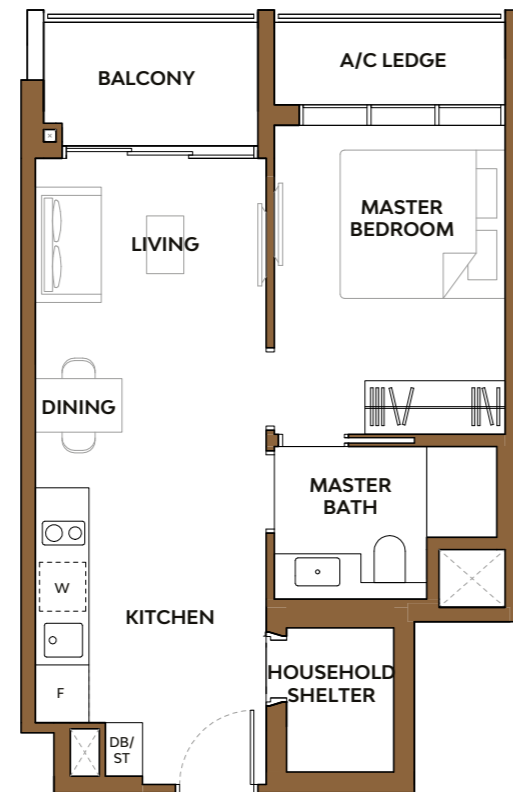
# 1-Bedroom Premium

## Type 1H1

Area: 50 sq m  
(include Balcony 5 sq m, A/C ledge 3 sq m)

### Unit(s)

- #04-24
- #04-40\*
- #04-41
- #05-29



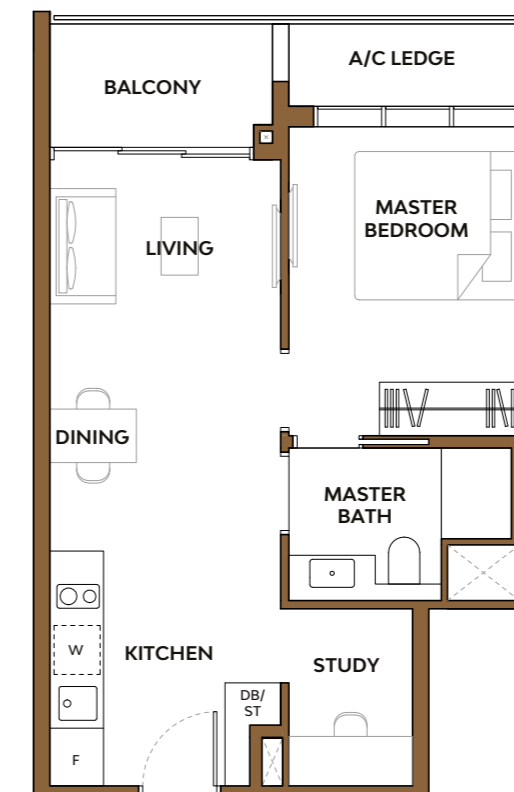
# 1-Bedroom + Study

## Type 1S1

Area: 51 sq m  
(include Balcony 5 sq m, A/C ledge 3 sq m)

### Unit(s)

- #04-32 TO #19-32
- #04-33\* TO #19-33\*

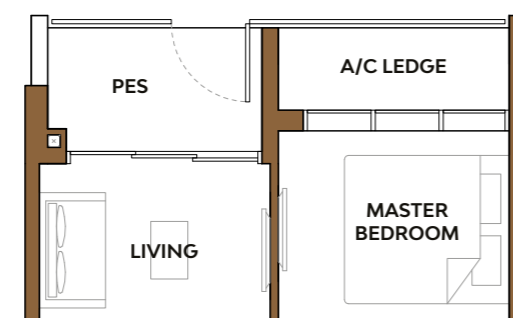


## Type 1H1-P

Area: 50 sq m  
(include PES 5 sq m, A/C ledge 3 sq m)

### Unit(s)

- #03-24
- #03-40\*
- #03-41

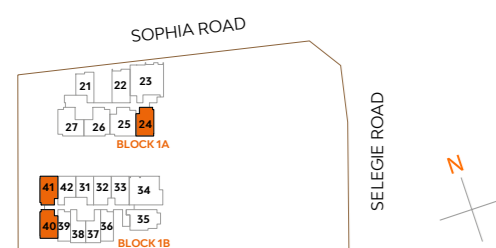
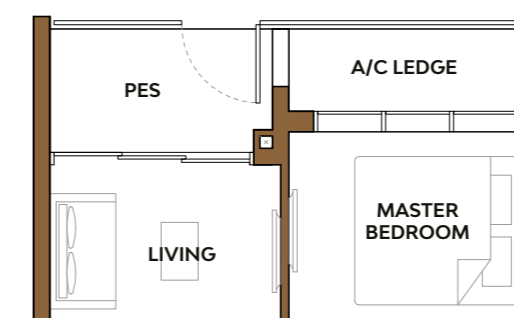


## Type 1S1-P

Area: 51 sq m  
(include PES 5 sq m, A/C ledge 3 sq m)

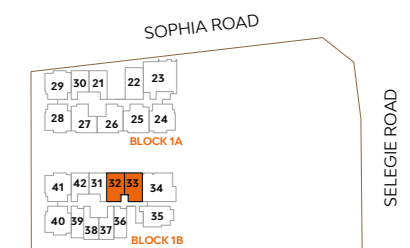
### Unit(s)

- #03-32
- #03-33\*



Note: \*Mirror Image

Plans are subject to change/amendments as may be required and/or approved by the Developer and/or the relevant authorities and do not form part of any offer or contract. These are not drawn to scale and are for the purpose of visual representation only. The balcony shall not be enclosed unless with the approved balcony screen. For an illustration of the approved balcony screen, please refer to APPROVED BALCONY SCREEN DESIGN page of this brochure.



## 2-Bedroom Deluxe

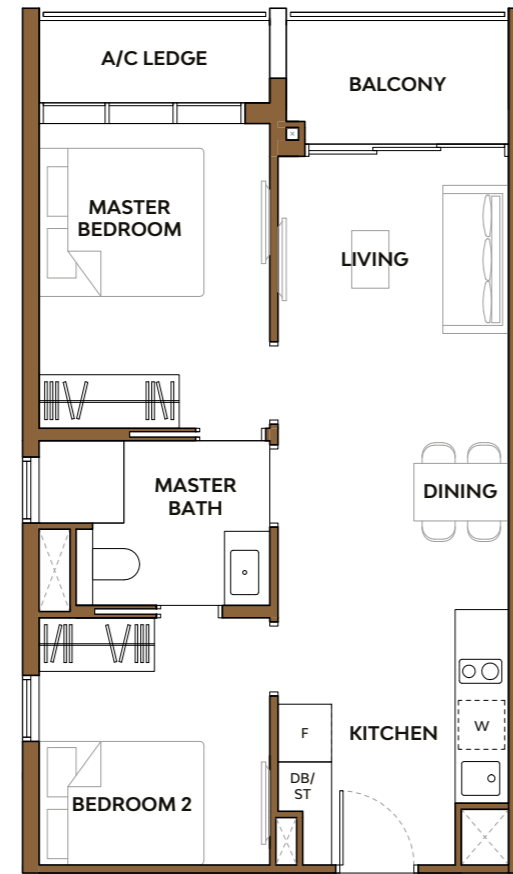
### Type 2C1

Area: 60 sq m  
(include Balcony 5 sq m, A/C ledge 3 sq m)

#### Unit(s)

#05-22 TO #07-22

#09-22 TO #19-22



## 2-Bedroom Deluxe

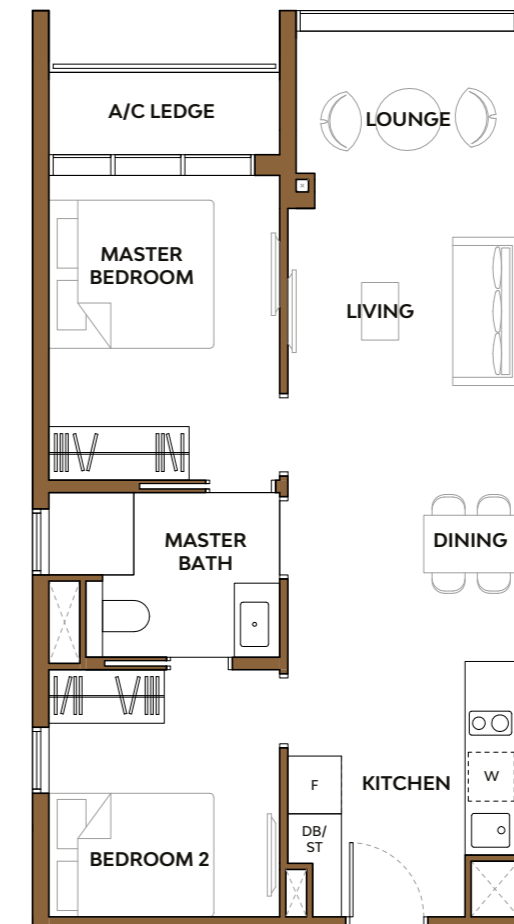
### Type 2C2

Area: 62 sq m (include A/C ledge 3 sq m)

#### Unit(s)

#04-22

#08-22

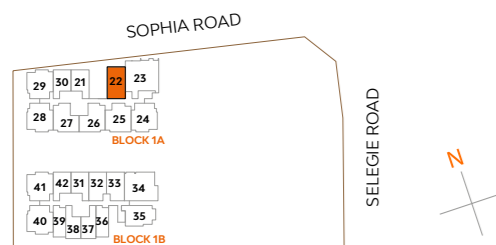


### Type 2C1-P

Area: 60 sq m  
(include PES 5 sq m, A/C ledge 3 sq m)

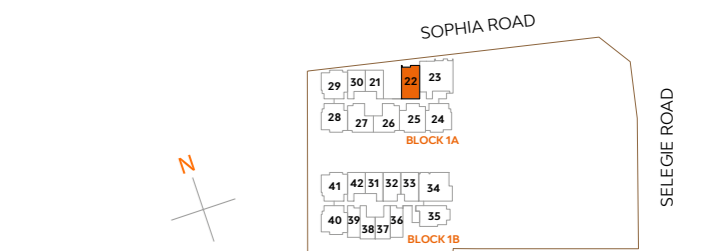
#### Unit(s)

#03-22



Note: \*Mirror Image

Plans are subject to change/amendments as may be required and/or approved by the Developer and/or the relevant authorities and do not form part of any offer or contract. These are not drawn to scale and are for the purpose of visual representation only. The balcony shall not be enclosed unless with the approved balcony screen. For an illustration of the approved balcony screen, please refer to APPROVED BALCONY SCREEN DESIGN page of this brochure.



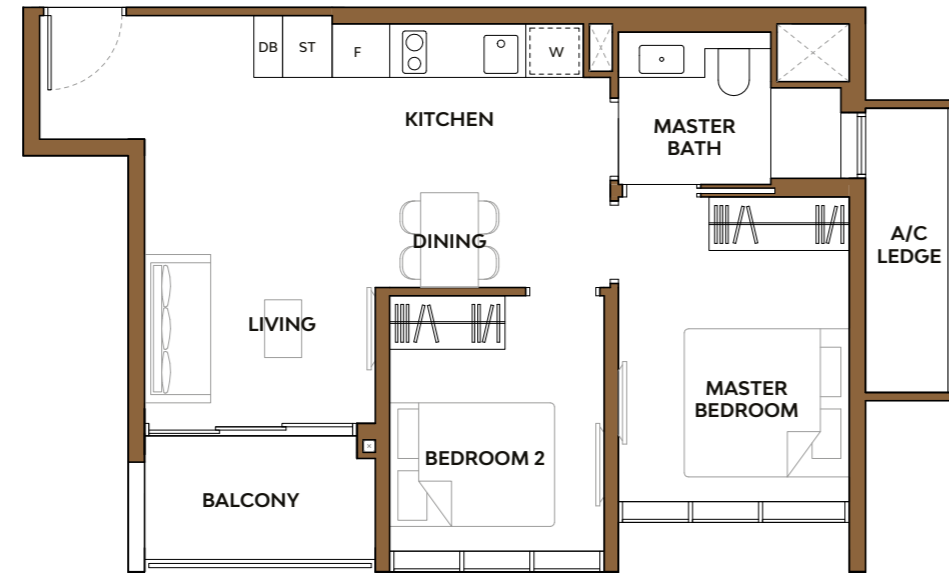
## 2-Bedroom Deluxe

### Type 2C3

Area: 62 sq m  
(include Balcony 5 sq m, A/C ledge 4 sq m)

#### Unit(s)

#04-35 TO #18-35



## 2-Bedroom Deluxe + Study

### Type 2S1

Area: 65 sq m  
(include Balcony 5 sq m, A/C ledge 3 sq m)

#### Unit(s)

#04-26\* TO #19-26\*

#04-27 TO #19-27

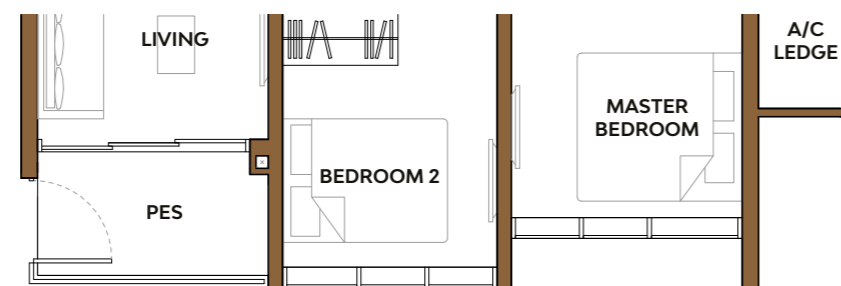


### Type 2C3-P

Area: 62 sq m  
(include PES 5 sq m, A/C ledge 4 sq m)

#### Unit(s)

#03-35



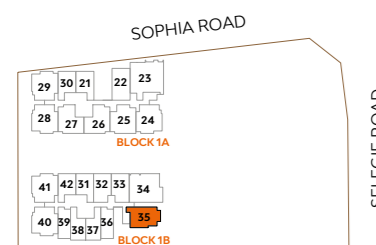
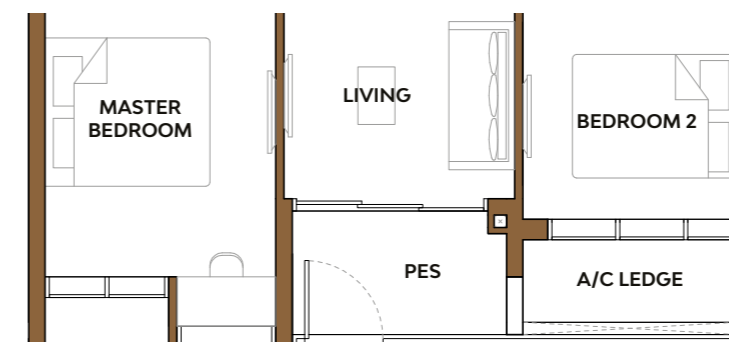
### Type 2S1-P

Area: 65 sq m  
(include PES 5 sq m, A/C ledge 3 sq m)

#### Unit(s)

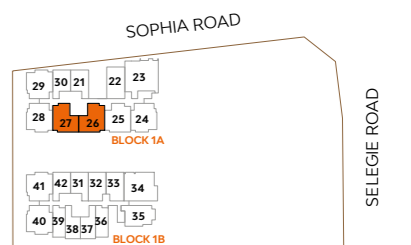
#03-26\*

#03-27



Note: \*Mirror Image

Plans are subject to change/amendments as may be required and/or approved by the Developer and/or the relevant authorities and do not form part of any offer or contract. These are not drawn to scale and are for the purpose of visual representation only. The balcony shall not be enclosed unless with the approved balcony screen. For an illustration of the approved balcony screen, please refer to APPROVED BALCONY SCREEN DESIGN page of this brochure.



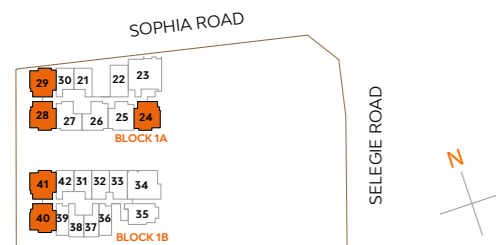
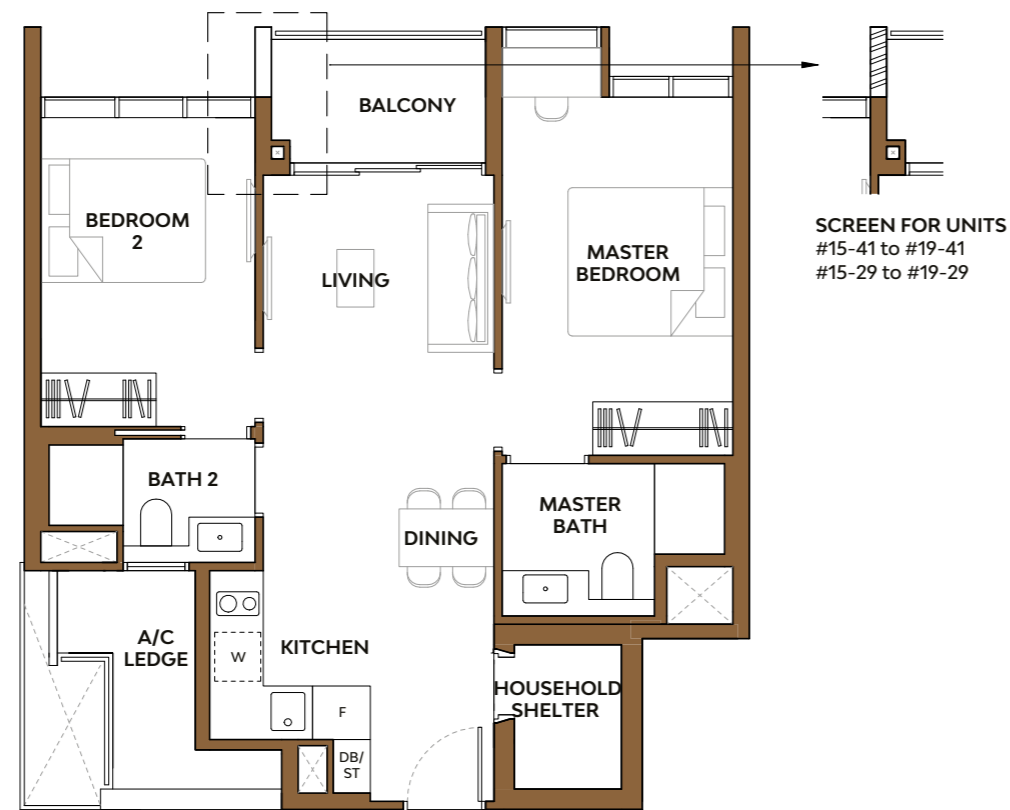
## 2-Bedroom Premium

### Type 2H1

Area: 71 sq m  
(include Balcony 5 sq m, A/C ledge 5 sq m)

#### Unit(s)

- #05-24 TO #19-24
- #05-28\* TO #19-28\*
- #05-40\* TO #19-40\*
- #05-41 TO #19-41
- #06-29 TO #19-29



Note: \*Mirror Image

Plans are subject to change/amendments as may be required and/or approved by the Developer and/or the relevant authorities and do not form part of any offer or contract. These are not drawn to scale and are for the purpose of visual representation only. The balcony shall not be enclosed unless with the approved balcony screen. For an illustration of the approved balcony screen, please refer to APPROVED BALCONY SCREEN DESIGN page of this brochure.

## 2-Bedroom Premium + Study

### Type 2S2

Area: 71 sq m  
(include Balcony 5 sq m, A/C ledge 3 sq m)

#### Unit(s)

- #04-25 TO #19-25

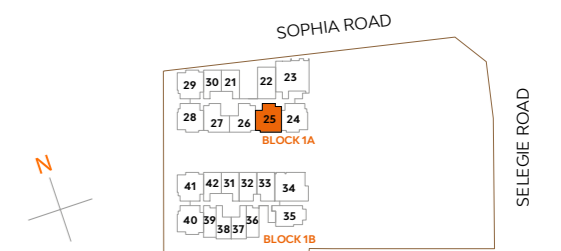


### Type 2S2-P

Area: 71 sq m  
(include PES 5 sq m, A/C ledge 3 sq m)

#### Unit(s)

- #03-25



## 3-Bedroom Premium

### Type 3H1

Area: 95 sq m  
(include Balcony 8 sq m, A/C ledge 5 sq m)

### Unit(s)

#04-34 TO #19-34



## 3-Bedroom Luxury

### Type 3D1

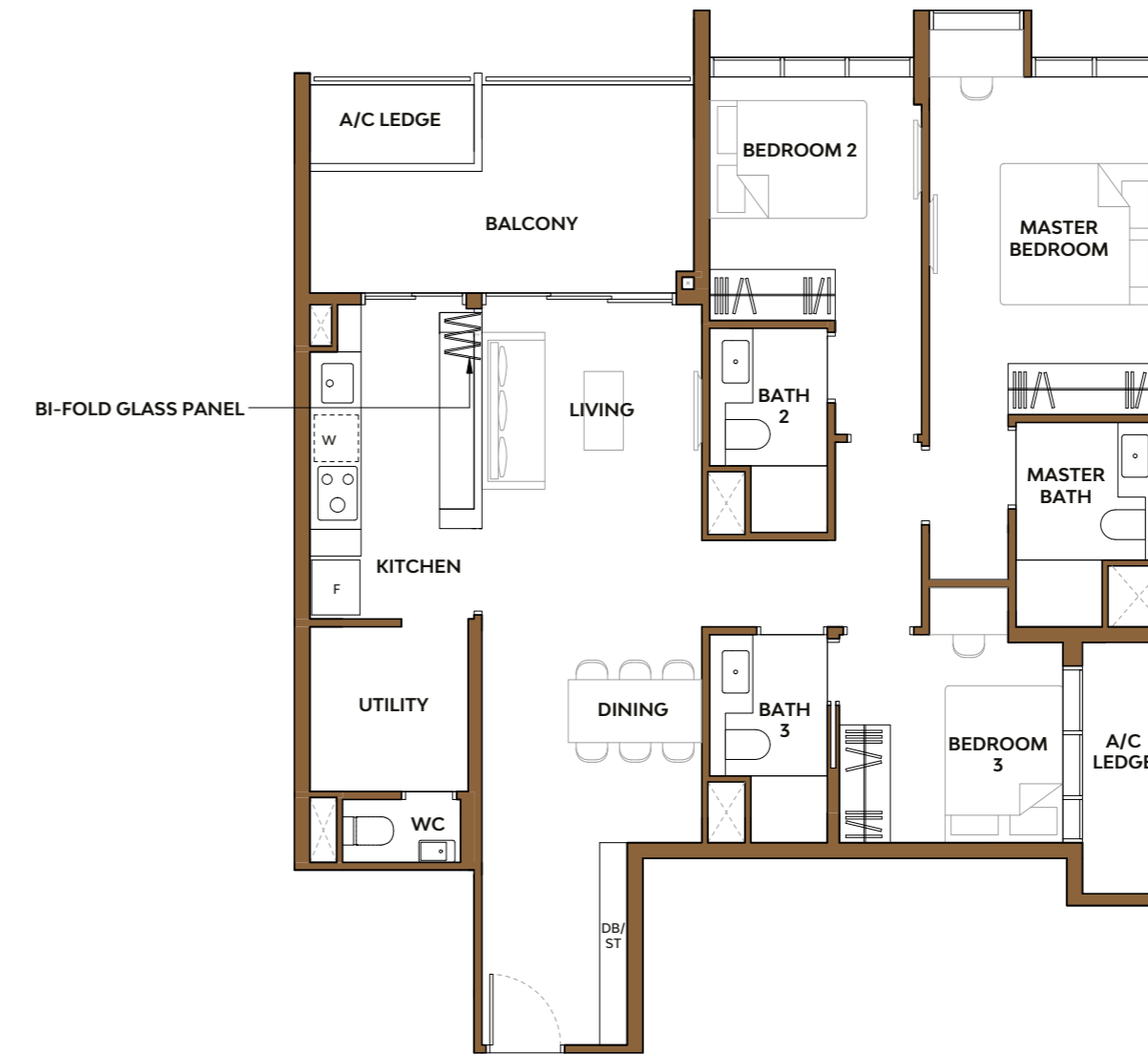
Area: 114 sq m  
(include Balcony 12 sq m, A/C ledge 6 sq m)

### Unit(s)

#04-23

#06-23

#08-23 TO #19-23



### Type 3H1-P

Area: 95 sq m  
(include PES 8 sq m, A/C ledge 5 sq m)

### Unit(s)

#03-34

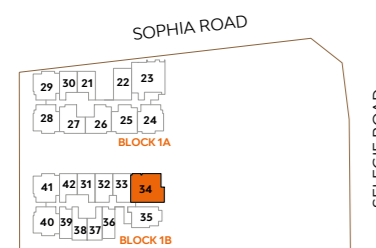
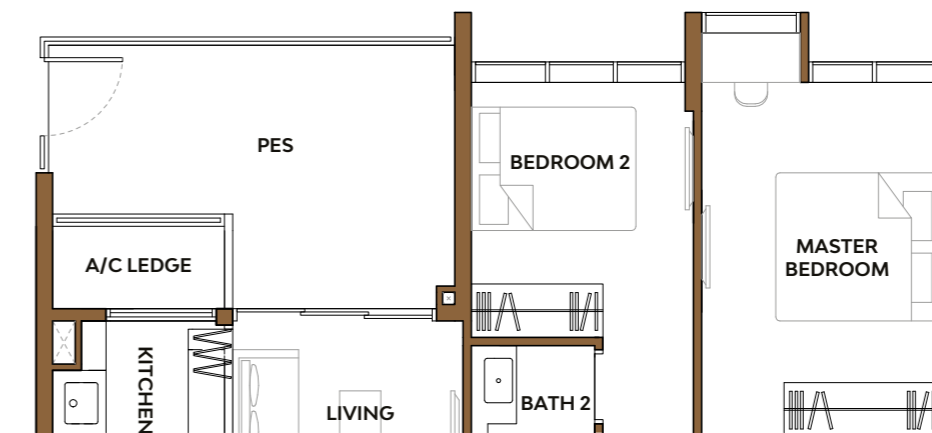


### Type 3D1-P

Area: 116 sq m  
(include PES 14 sq m, A/C ledge 6 sq m)

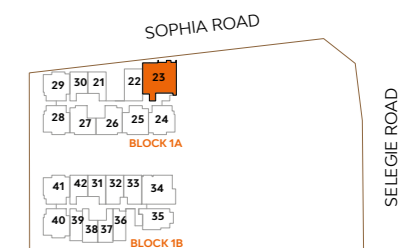
### Unit(s)

#03-23



Note: \*Mirror Image

Plans are subject to change/amendments as may be required and/or approved by the Developer and/or the relevant authorities and do not form part of any offer or contract. These are not drawn to scale and are for the purpose of visual representation only. The balcony shall not be enclosed unless with the approved balcony screen. For an illustration of the approved balcony screen, please refer to APPROVED BALCONY SCREEN DESIGN page of this brochure.



SELEGIE ROAD

# 3-Bedroom Luxury

## Type 3D2

Area: 116 sq m  
(include A/C ledge 6 sq m)

### Unit(s)

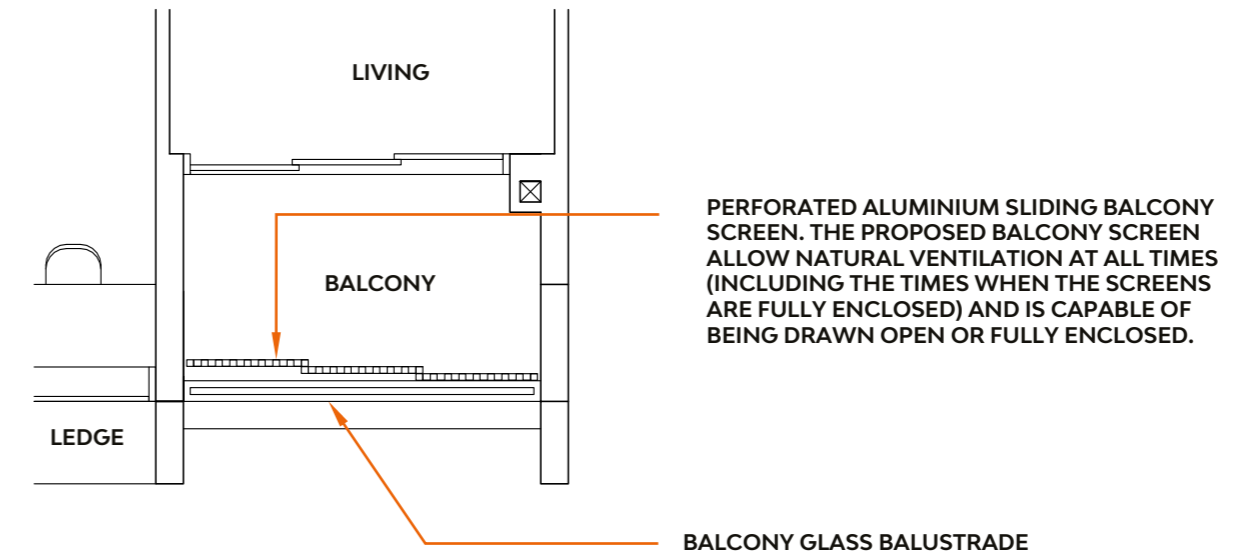
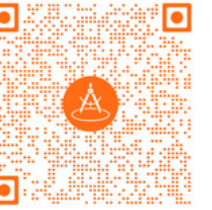
#05-23

#07-23

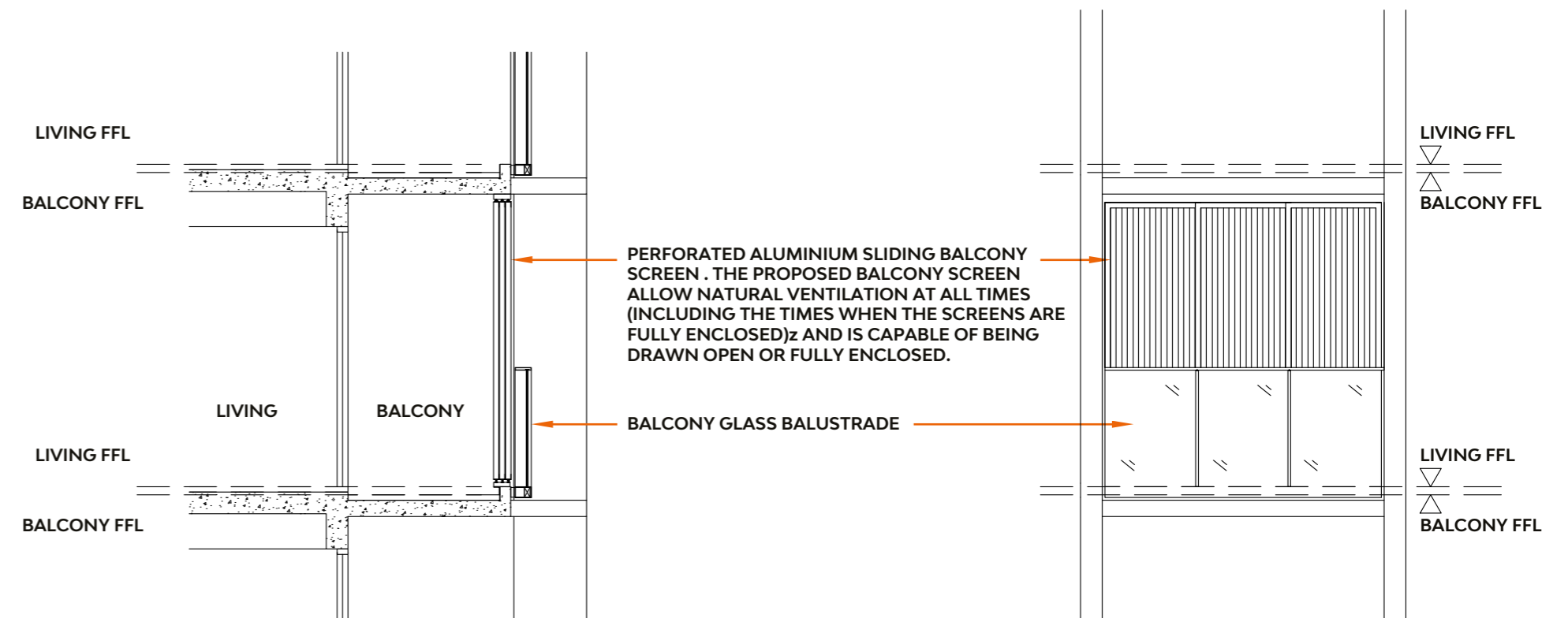


# Approved Balcony Screen Design

SCAN TO VIEW SPECIFICATIONS

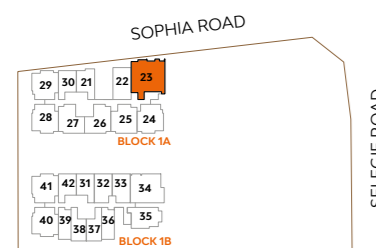


BALCONY SCREEN - PLAN



SECTION

ELEVATION 1



Note: \*Mirror Image

Plans are subject to change/amendments as may be required and/or approved by the Developer and/or the relevant authorities and do not form part of any offer or contract. These are not drawn to scale and are for the purpose of visual representation only. The balcony shall not be enclosed unless with the approved balcony screen. For an illustration of the approved balcony screen, please refer to APPROVED BALCONY SCREEN DESIGN page of this brochure.

The Balcony (if any) or private enclosed space (if any), where applicable, are not to be enclosed except with a balcony screen which has been approved and complies with the competent authorities' guidelines. Purchaser may opt to have approved balcony screen installed at the balcony (if any) or private enclosed space (if any), where applicable, at the unit at purchaser's own cost