

THE
HARBOUR
RESIDENCES



305

A decorative graphic consisting of two concentric diamond shapes (squares rotated 45 degrees) with thin lines. The number '305' is centered within the inner diamond. Two horizontal lines extend from the left and right vertices of the outer diamond.



Elevate Your Living at The Harbour Residence

AMENITIES WITHIN THE VICINITY

SHOPPING MALLS

Viva Vista Mall	2 Mins Drive
Alexandra Retail Centre	6 Mins Drive
Queensway Shopping Ctr	6 Mins Drive
Anchorpoint	7 Mins Drive
VivoCity	7 Mins Drive
IKEA	8 Mins Drive
The Star Vista	10 Mins Drive

F&B / EATERIES

Pasir Panjang Food Ctr	5 Mins Drive
Gilman Barracks	7 Mins Drive
Alexandra Village Food Ctr	8 Mins Drive
ABC Brickworks	9 Mins Drive
Timbre+	9 Mins Drive
Telok Blangah Cres Mkt & Food Ctr	10 Mins Drive

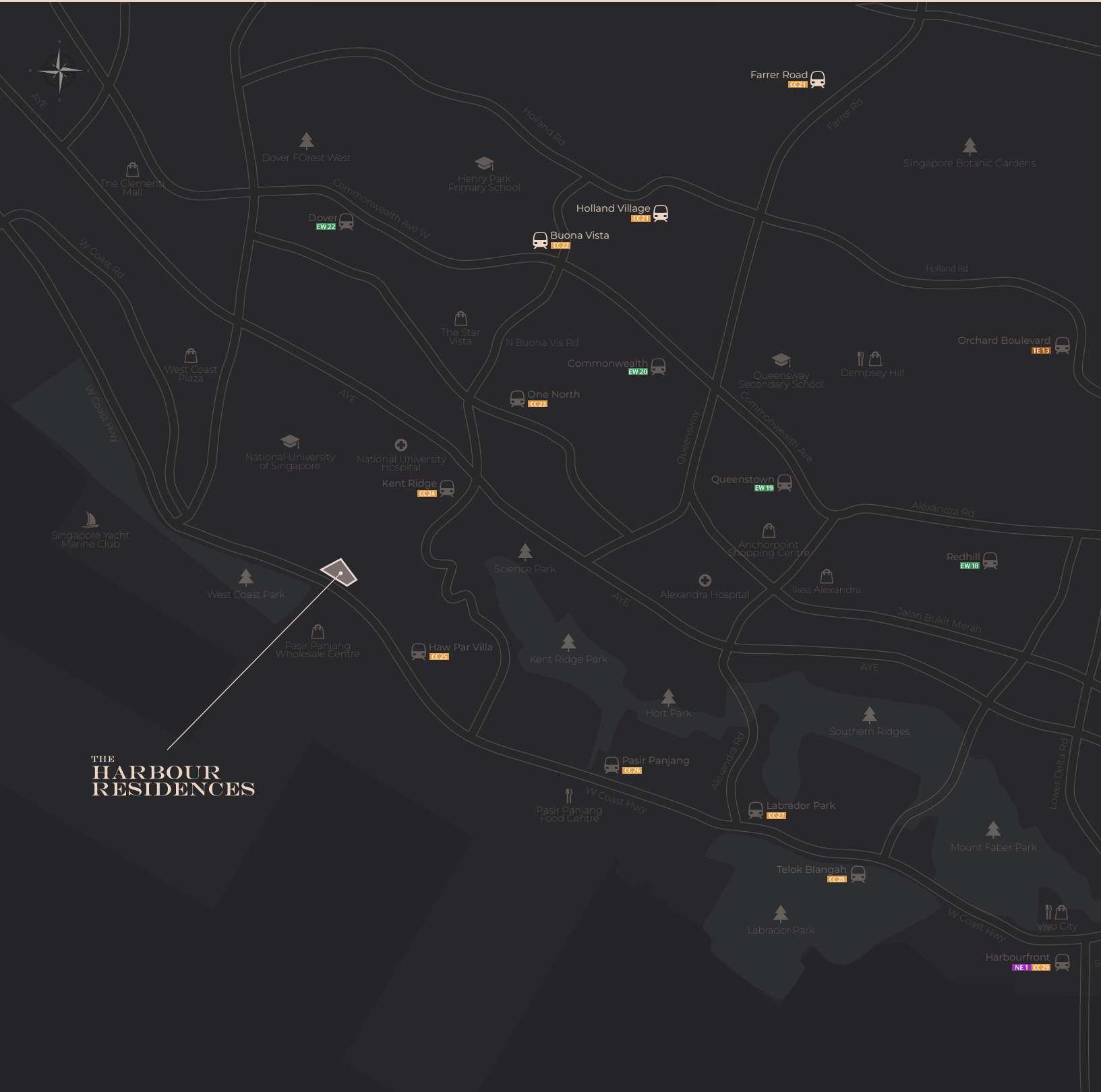
SCHOOLS

National University of Singapore	3 Mins Drive
Singapore Polytechnic	7 Mins Drive
Anglo-Chinese School (Independent)	9 Mins Drive
Nan Hua Primary School	12 Mins Drive

HOSPITALS

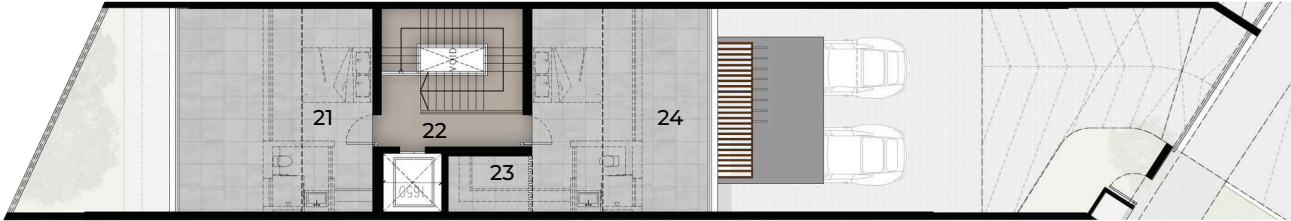
National University Hospital	9 Mins Drive
Alexandra Hospital	11 Mins Drive

LOCATION MAP

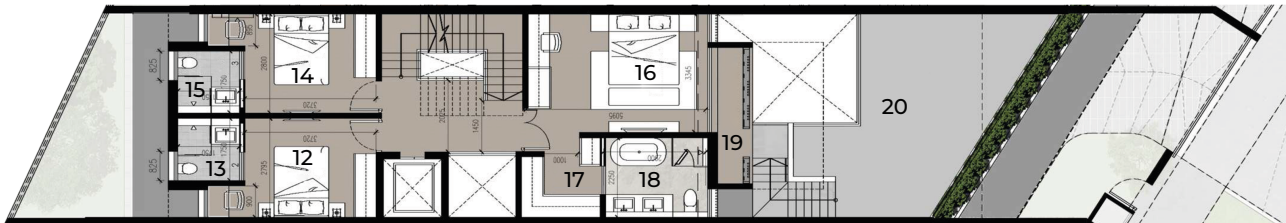


THE
**HARBOUR
RESIDENCES**

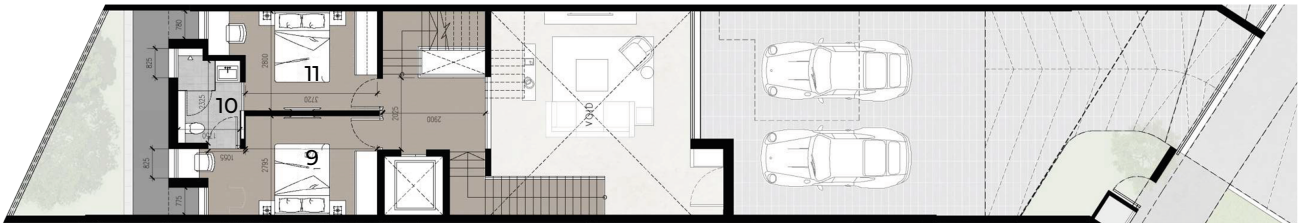
305 FLOOR PLAN



ATTIC STOREY



2ND STOREY



MEZZANINE



1ST STOREY

Gross Floor Area: 229.14 sqm
 Construction Floor Area: 534.24 sqm

- | | | | | | |
|----|-------------|----|-----------------|----|--------------------|
| 1 | CARPORCH | 11 | BEDROOM 2 | 21 | REAR ROOF TERRACE |
| 2 | LIVING | 12 | BEDROOM 3 | 22 | LIFT LOBBY |
| 3 | HS | 13 | BATH 2 | 23 | M&E |
| 4 | POWDER ROOM | 14 | BEDROOM 4 | 24 | FRONT ROOF TERRACE |
| 5 | DINING | 15 | BATH 3 | | |
| 6 | KITCHEN | 16 | MASTER BEDROOM | | |
| 7 | MAID'S ROOM | 17 | MASTER WASHROOM | | |
| 8 | MAID'S BATH | 18 | MASTER BATH | | |
| 9 | BEDROOM 1 | 19 | MASTER BALCONY | | |
| 10 | BATH 1 | 20 | BALCONY | | |

ARCHITECT

AKTA

aKTa-rchitects is a Singapore-based design practice for the built environment established in 2001, incorporating a wide range of works previously carried out by Kevin Tan.

With a particular focus on high-quality solutions, we seek to fulfill our client's needs through quality design, translating design concepts into spaces with impact and integrity, incorporating and considering all relevant issues such as climate, culture, context, technology, and sustainability.

DEVELOPER



SILVER EDGE GROUP
BUILDING THE FUTURE

A company incorporated in 2017 to hold common interests of a group of individuals for investment purposes with its principal activity to be property development (including REIT management and direct property fund management).

Silver Edge provides solutions for sustainable urbanization, urban development, connectivity, equity asset management and medical clinics.

As a multi-faceted property company, Silver Edge provides innovative real estate solutions with its sterling portfolio of residential developments and investment-grade commercial properties.

Silver Edge is geographically diversified in Asia, with Singapore as its key market, while it seeks aggressive growth in property portfolio expansion.

PARTNERS

BESCON

Bescon Consulting Engineers Pte (BESCON) is an award-winning Professional Mechanical and Electrical (M&E) Engineering Consultancy and Project Management firm.

With a full complement of professional staff from the various engineering disciplines, clients can be assured of the most comprehensive and highest standard of professional services.

CMP Consultants Pte Ltd / CMP Consulting Engineers is one of the few consulting engineering company in Singapore capable of providing multi-disciplinary consulting engineering services.

CMP CONSULTANTS PTE LTD
CIVIL • STRUCTURAL • MECHANICAL • ELECTRICAL

Established in 1961 as a branch firm of Crooks Michell Peacock & Stewart of Australia, the practice has grown and evolved into a mature and fully entrenched local practice.

The Company was established from the very beginning to provide consultancy services in the complete range of engineering disciplines, including Civil, Structural, Mechanical, Electrical, Industrial as well as Design for Safety (DfS), and Fire Safety Engineering – all provided "in-house".

OTHER DEVELOPMENTS



DISCLAIMER

While every reasonable care has been taken in preparing this brochure, neither the Developer nor its agents will be held responsible for any inaccuracies or omissions. Visual representations, illustrations, photographs, art renderings and graphic representations or references are intended to portray only artistic impressions of the development and cannot be regarded as representation of fact. All photographs and illustrations to credit original photographers and illustrators. We do not own any photographs or illustrations unless otherwise stated. The ownership of the artist's impression images is retained by | SILVER EDGE INVESTMENT HOLDINGS PTE. LTD. | whose consent must be sought before any use or reproduction of image/drawings or any part thereof can be made.

FOR MORE INFORMATION,
PLEASE CONTACT OUR HUTTONS ASSOCIATE NOW

OFFICIAL MARKETING AGENCY

Huttons

SINGAPORE'S LARGEST
PRIVATE REAL ESTATE AGENCY

ESTATE AGENT LICENCE NO.: L3008899K

www.huttonsgroup.com



SILVER EDGE GROUP
BUILDING THE FUTURE

SILVER EDGE INVESTMENT HOLDINGS PTE LTD

UEN: 201717753Z

66 KALLANG PUDDING ROAD, #07-00
SINGAPORE 349324

Silver Edge Investment Holdings Private Limited © 2024. All Rights Reserved.