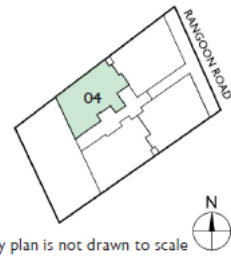
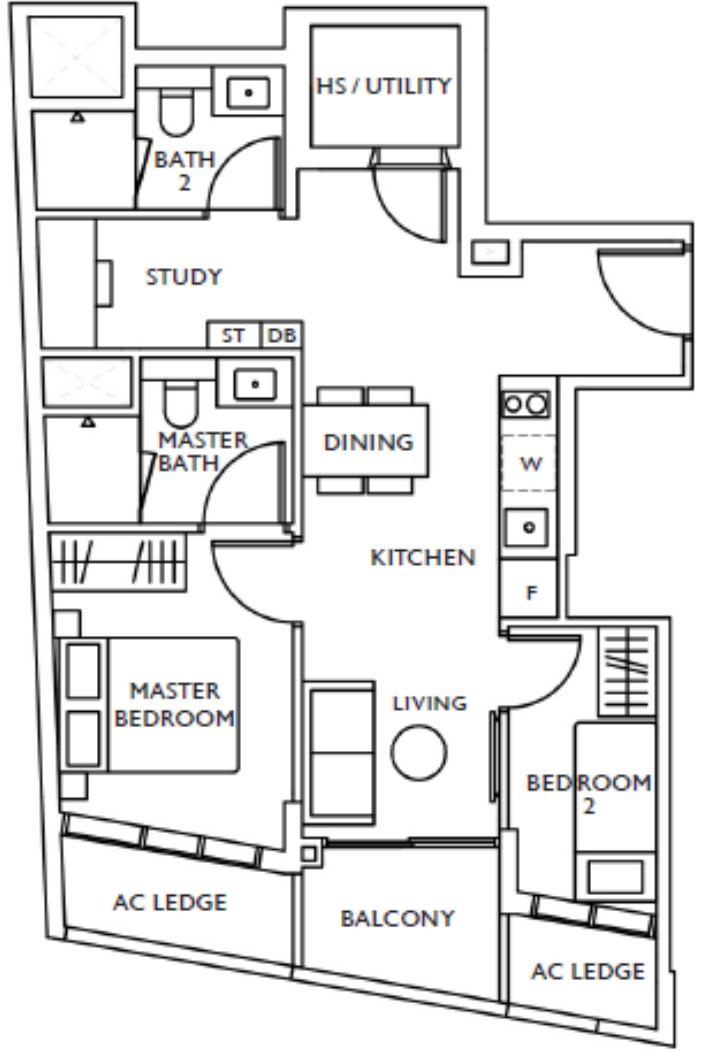


# 2-BEDROOM + STUDY

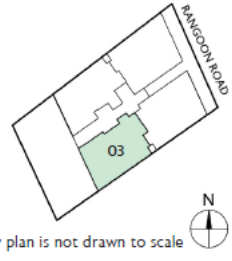
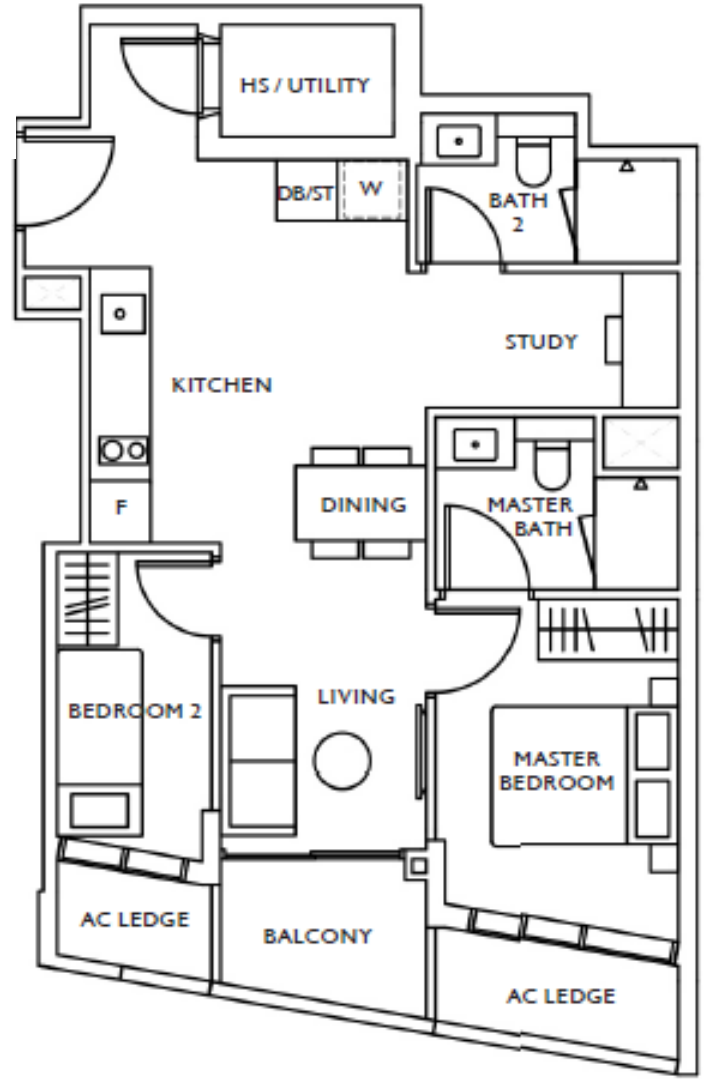
**Type B1:** 64 sqm or approx. 689 sq ft

- #02-04
- #03-04
- #04-04



**Type B2:** 68 sqm or approx. 732 sq ft

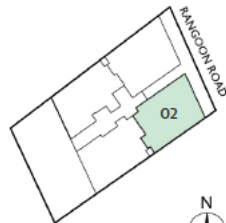
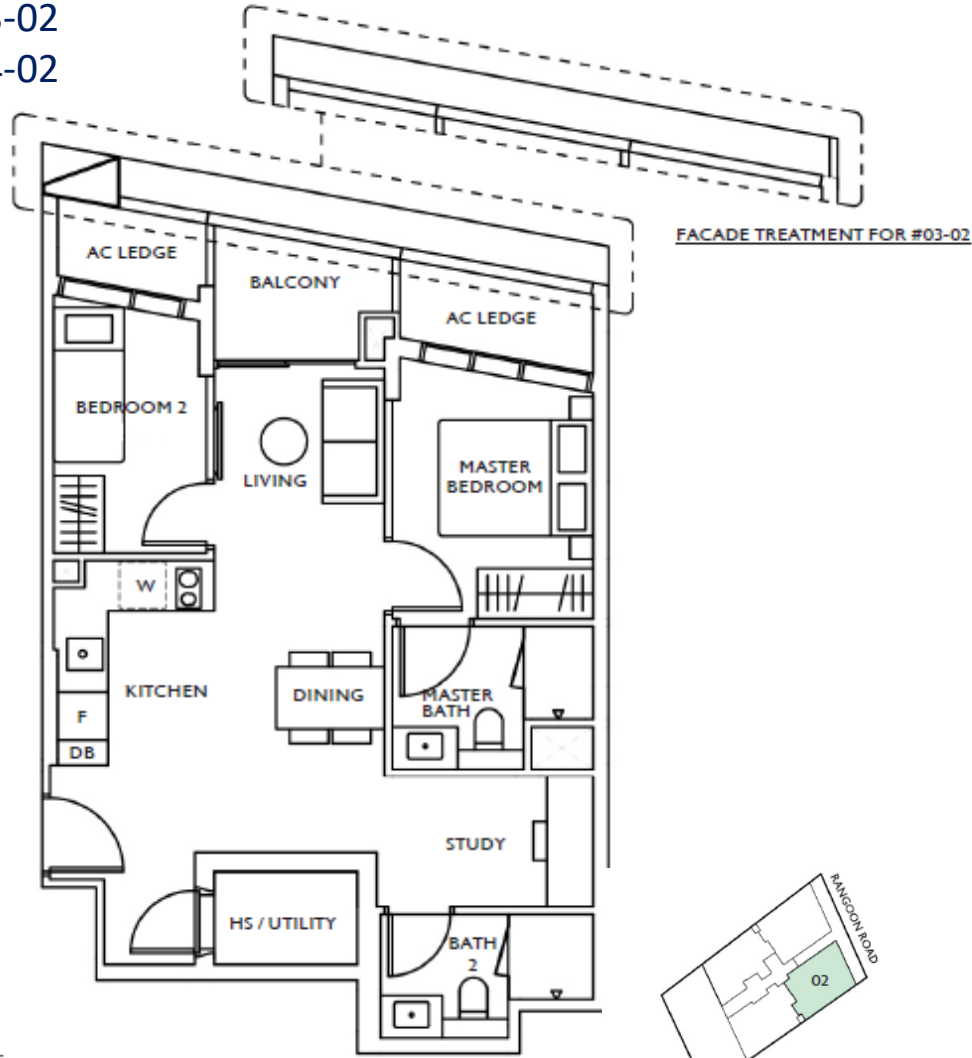
- #02-03
- #03-03
- #04-03



# 2-BEDROOM + STUDY

**Type B3:** 68 sqm or approx. 732 sq ft

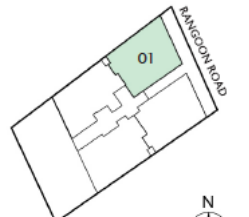
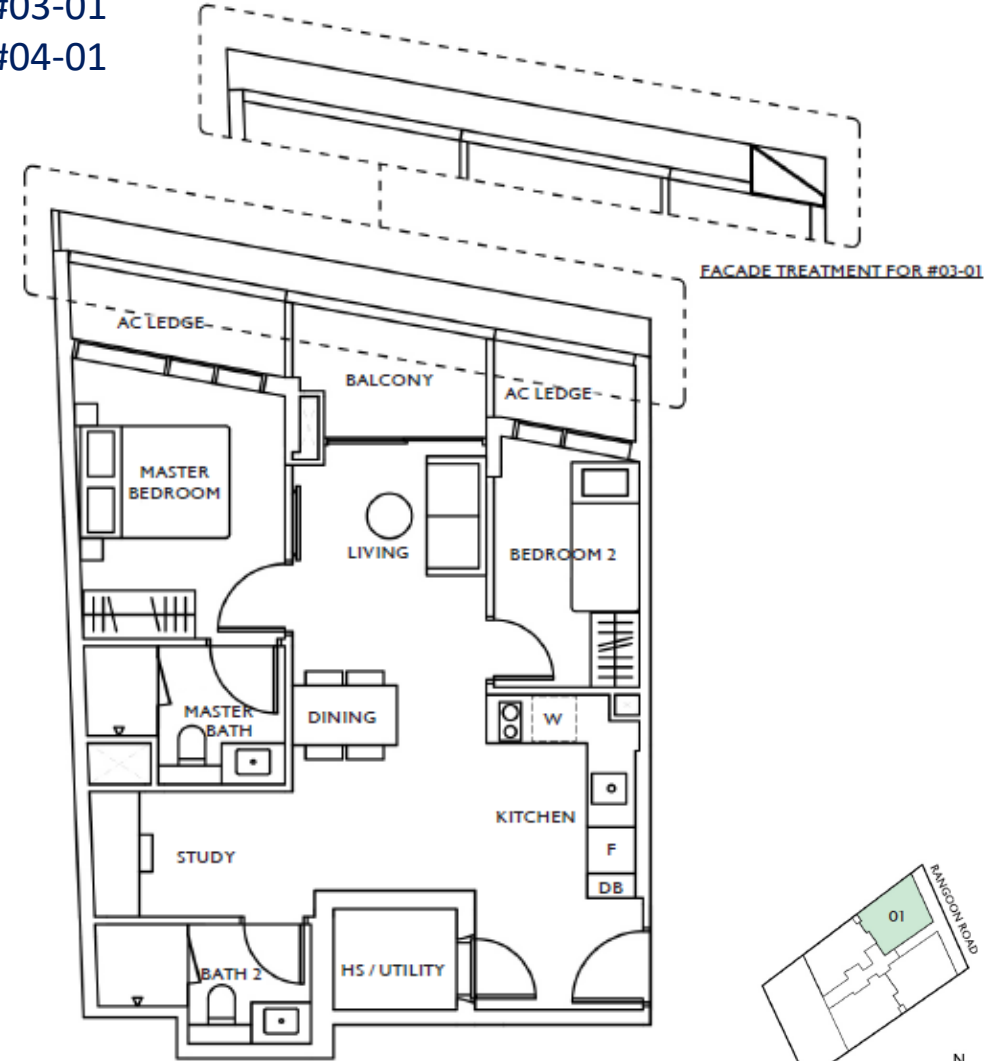
- #02-02
- #03-02
- #04-02



Key plan is not drawn to scale

**Type B4:** 72 sqm or approx. 775 sq ft

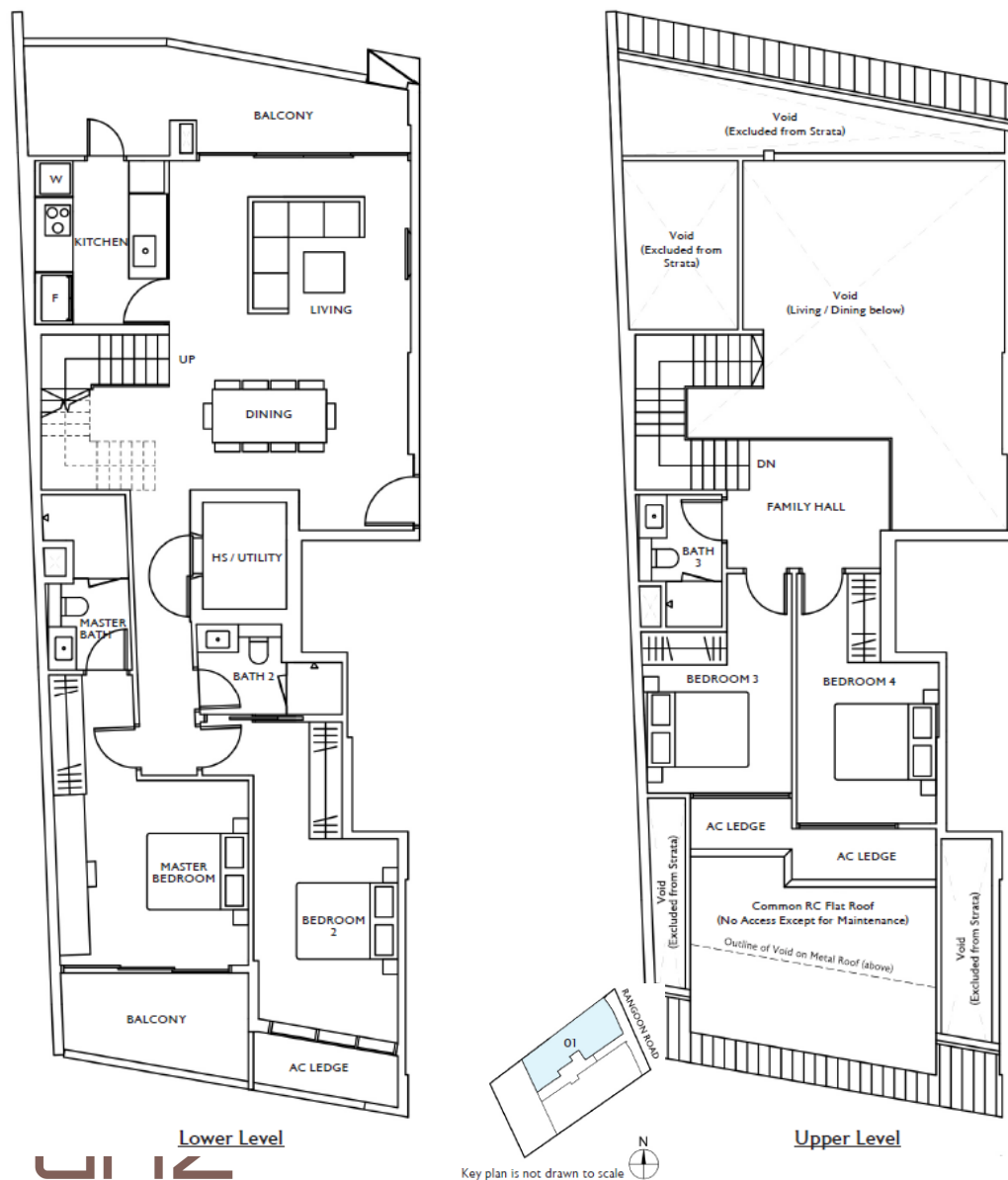
- #02-01
- #03-01
- #04-01



Key plan is not drawn to scale

# 4-BEDROOM DUPLEX

**Type PH1: #05-01 (219 sqm or approx. 2,357 sq ft)**



**Type PH2: #05-02 (218 sqm or approx. 2,347 sq ft)**

