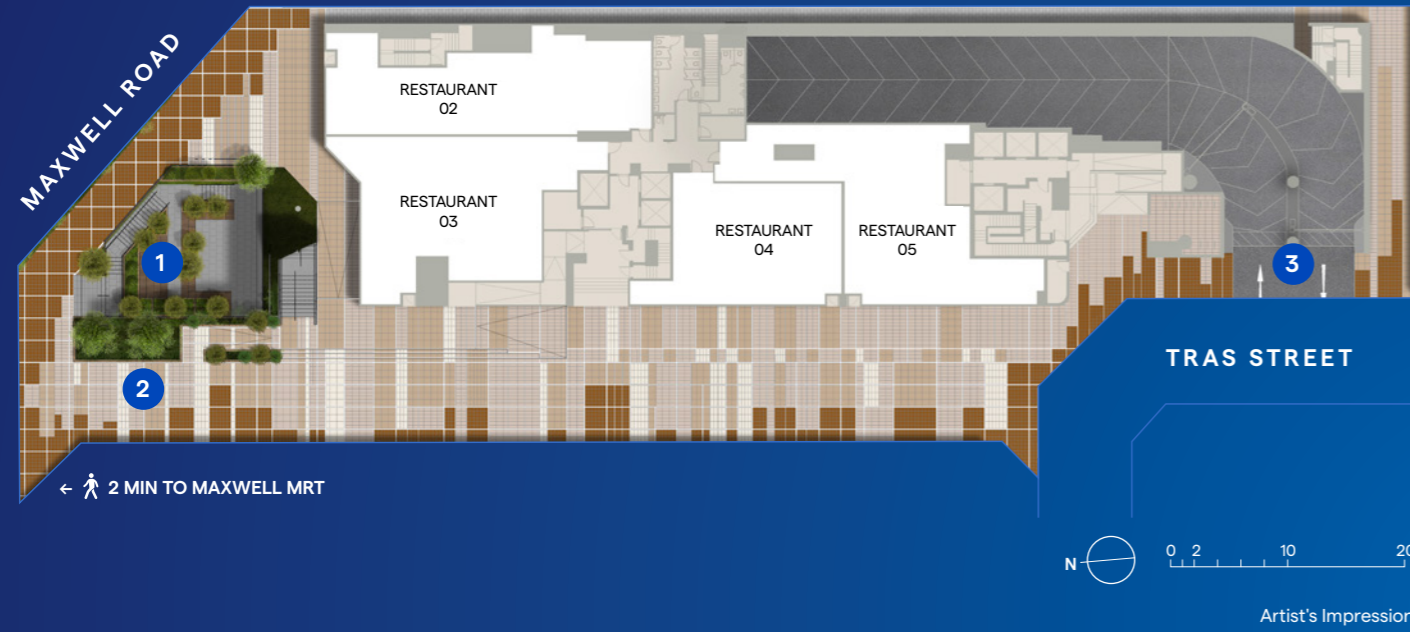


# 1<sup>ST</sup> STOREY SITE PLAN

- 1 The Commons (B1)
- 2 The Stage
- 3 Vehicular Ingress & Egress



# 4<sup>TH</sup> STOREY SITE PLAN / THE COURTYARD

- 4 Courtyard Dining
- 5 Festival Lawn
- 6 Courtyard Lounge
- 7 Fitness Courtyard
- 8 Courtyard Garden
- 9 Farm-to-Fork Garden
- GS Genset



# PARK

# ON

# PARK

## ROOF TMW HAVEN

Sky Pavilion  
Sky Lounger  
Sky Deck

Outdoor Shower  
Infinity Sky Pool  
Sky Gym

## 15 - 16<sup>TH</sup> STOREY SKY POOL

Lazy Deck  
Sky Jacuzzi  
Outdoor Shower

## 12<sup>TH</sup> STOREY SOCIAL GARDEN

TMW Social Club  
Social Lounge  
Social Blooms

## 9 - 10<sup>TH</sup> STOREY OUTDOOR LIVING ROOM

Breakout Pod  
The Living Room  
Plug and Play

## 4<sup>TH</sup> STOREY THE COURTYARD

Courtyard Dining  
Festival Lawn  
Courtyard Lounge

Fitness Courtyard  
Courtyard Garden  
Farm-to-Fork Garden

## 20<sup>TH</sup> STOREY SKY LOUNGE

Panorama

## 18 - 19<sup>TH</sup> STOREY SKY BAR

All-day Bar  
Cocktail Bar

## 17<sup>TH</sup> STOREY WELLNESS TERRACE

Wellness Deck

## 13<sup>TH</sup> STOREY THE BAR LOUNGE

Plug and Work

## 11<sup>TH</sup> STOREY DO-IT-ALL DECK

Executive Lounge

## 6 - 7<sup>TH</sup> STOREY TMW STUDY

Reading Alcove  
Working Lounge

As lives and stories unravel at TMW Maxwell, a biophilic spectacle arises. Fronting the buzz of lively Maxwell Road are a series of vertically stacked gardens. Ascending from the pedestrian level in a breathtaking crescendo right up to the peak, these gardens are principally designed based on duality - versatile green spaces that adapt and change throughout any given day. While levels and amenities from the 4<sup>th</sup> storey onwards are exclusive to residents, the overall facade draws the admiration of all. Within it, a perfect synchrony of facilities, ambiances and spatial concepts.



# UNIT

UNIT FLOOR	01	02	03	04	05	06	07	08	09	10
20	1S1	A4	1S2	2DK1	2DK2	1B2	A3	1B1		
19	1S1	A4	1S2	2DK1	2DK2	1B2	A3	1B1	A3	A3
18	1S1	A4	1S2	2DK1	2DK2	1B2	A3	1B1	A3	A3
17	1S1	A4	1S2	2DK1	2DK2	1B2	A3	1B1	A3	A3
16	1S1	A4	1S2	2DK1	2DK2	1B2	A3	1B1	A3	A3
15	1S1	A4	1S2	2DK1	2DK2	1B2	A3	1B1	A3	A3
14	1S1	A4	1S2	2DK1	2DK2	1B2	A3	1B1	A3	A3
13	1S1	A4	1S2	2DK1	2DK2	1B2	A3	1B1	A3	A3
12	1S1	A4	1S2	2DK1	2DK2	1B2	A3	1B1	A3	A3
11	1S1	A4	1S2	2DK1	2DK2	1B2	A3	1B1	A3	A3
10	1S1	A4	1S2	2DK1	2DK2	1B2	A3	1B1	A3	A3
9	1S1	A4	1S2	2DK1	2DK2	1B2	A3	1B1	A3	A3
8	1S1	A4	1S2	2DK1	2DK2	1B2	A3	1B1	A3	A3
7	1S1	A4	1S2	2DK1	2DK2	1B2	A3	1B1	A3	A3
6	1S1	A4	1S2	2DK1	2DK2	1B2	A3	1B1	A3	A3
5	1S1	A4	1S2	2DK1	2DK2	1B2	A3	1B1	A3	A3
4	1S1	A4	1S2	2DK1-G	2DK2-G	1B2	A3-G	1B1-G	A3-G	A3-G
3	COMMERCIAL									
2	COMMERCIAL									
1	COMMERCIAL									
B1	COMMERCIAL/ BASEMENT CARPARK									
B2	BASEMENT CARPARK									
B3	BASEMENT CARPARK									

# DISTRIBUTION

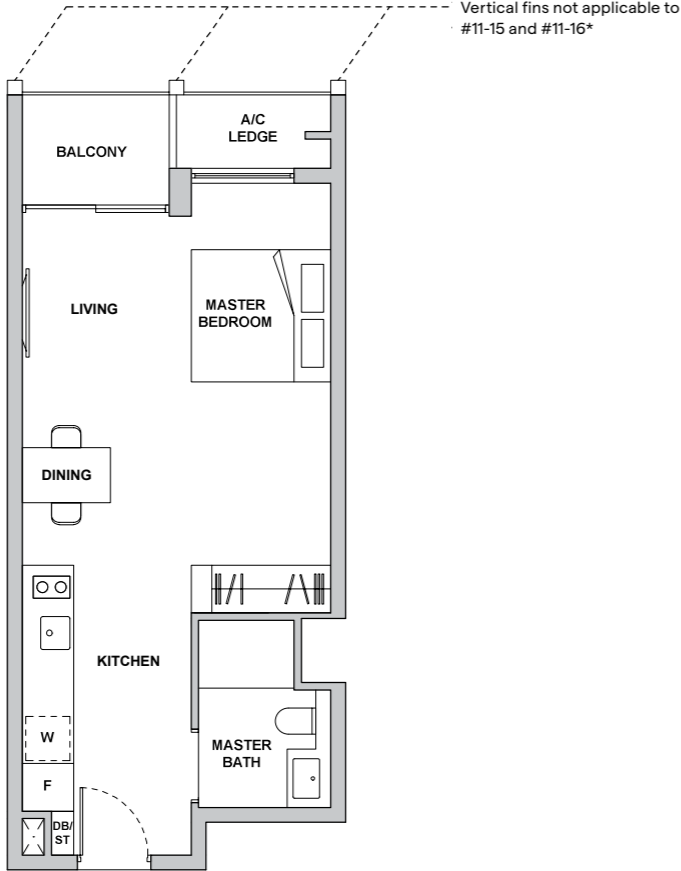
- Studio
- 1-Bedroom + Study
- 1-Bedroom Suite
- 2-Bedroom Premium
- 2-Bedroom Dual Key
- 1-Bedroom Loft

UNIT FLOOR	11	12	13	14	15	16	17	18	19	20
20										SKY GYM
19	A3	A3	A3	A3	BL1	BL1	BL2	BL2	BL2	2C1
18	A3	A3	A3	A3	A1	A1	A2	A2	A2	2C1
17	A3	A3	A3	A3	A1	A1	A2	A2	A2	2C1
16	A3	A3	A3	A3	A1	A1	A2	A2	A2	2C1
15	A3	A3	A3	A3	A1	A1	A2	A2	A2	2C1
14	A3	A3	A3	A3	A1	A1	A2	A2	A2	2C1
13	A3	A3	A3	A3	TMW SOCIAL CLUB		A2	A2	A2	2C1
12	A3	A3	A3	A3	TMW SOCIAL CLUB		A2	A2	A2	2C1
11	A3	A3	A3	A3	A1	A1	A2	A2	A2	2C1
10	A3	A3	A3	A3	A1	A1	A2	A2	A2	2C1
9	A3	A3	A3	A3	A1	A1	A2	A2	A2	2C1
8	A3	A3	A3	A3	A1	A1	A2	A2	A2	2C1
7	A3	A3	A3	A3	A1	A1	A2	A2	A2	2C1
6	A3	A3	A3	A3	A1	A1	A2	A2	A2	2C1
5	A3	A3	A3	A3	A1	A1	A2	A2	A2	2C1
4	A3-G	A3-G	A3-G	A3-G	A1	A1	A2	A2	A2	2C1
3	COMMERCIAL									
2	COMMERCIAL									
1	COMMERCIAL									
B1	COMMERCIAL / BASEMENT CARPARK									
B2	BASEMENT CARPARK									
B3	BASEMENT CARPARK									

# STUDIO

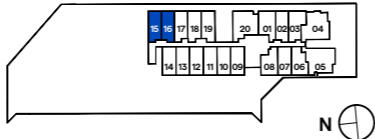
## TYPE A1

**AREA** 44 sqm (include 2 sqm A/C Ledge, 4 sqm Balcony)  
**UNIT(S)** #04-15 to #11-15  
 #14-15 to #18-15  
 #04-16\* to #11-16\*  
 #14-16\* to #18-16\*



**LEGEND**  
 W WASHER DB/ST DISTRIBUTION BOARD/STORAGE F FRIDGE A/C AIR CONDITIONER

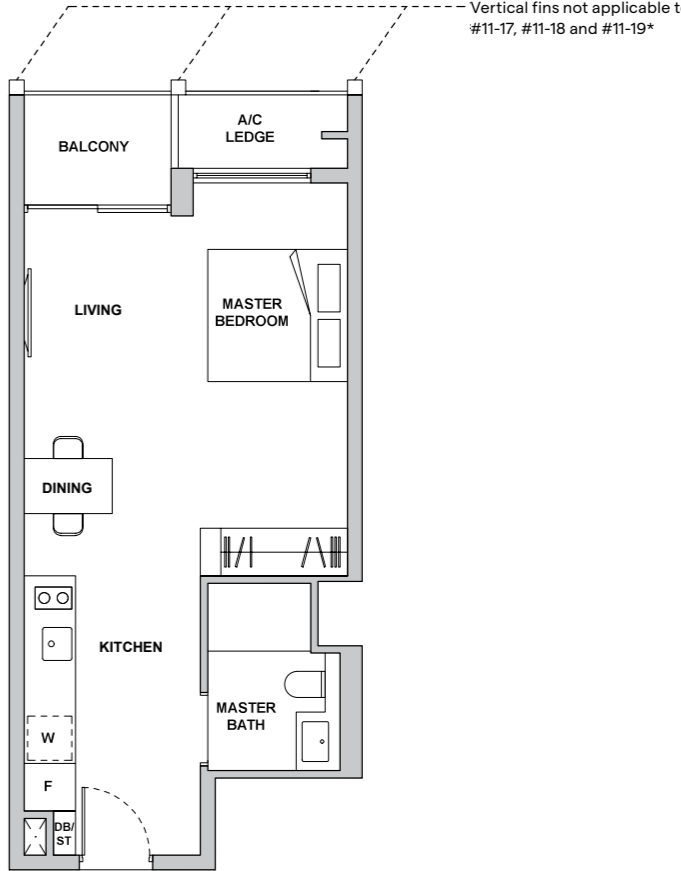
NOTE: \*MIRROR IMAGE  
 Plans are subject to change/amendments as may be required and/or approved by the Developer and/or the relevant authorities and do not form part of any offer or contract. These are not drawn to scale and are for the purpose of visual presentation only. The balcony shall not be enclosed unless with the approved balcony screen. For an illustration of the approved balcony screen, please refer to APPROVED BALCONY SCREEN DESIGN page of this brochure.



# STUDIO

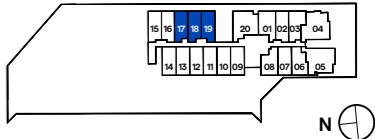
## TYPE A2

**AREA** 45 sqm (include 3 sqm A/C Ledge, 4 sqm Balcony)  
**UNIT(S)** #04-17 to #18-17  
 #04-18 to #18-18  
 #04-19\* to #18-19\*



**LEGEND**  
 W WASHER DB/ST DISTRIBUTION BOARD/STORAGE F FRIDGE A/C AIR CONDITIONER

NOTE: \*MIRROR IMAGE  
 Plans are subject to change/amendments as may be required and/or approved by the Developer and/or the relevant authorities and do not form part of any offer or contract. These are not drawn to scale and are for the purpose of visual presentation only. The balcony shall not be enclosed unless with the approved balcony screen. For an illustration of the approved balcony screen, please refer to APPROVED BALCONY SCREEN DESIGN page of this brochure.

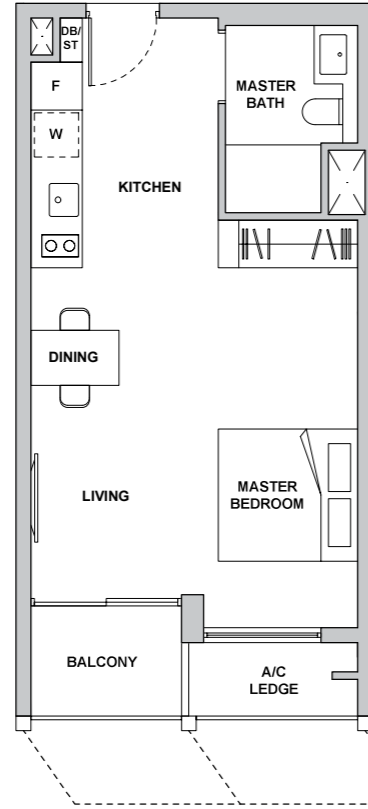


# STUDIO

## TYPE A3

AREA 44 sqm (include 3 sqm A/C Ledge, 4 sqm Balcony)

UNIT(S) #05-07 to #20-07  
 #05-09 to #19-09  
 #05-10 to #19-10  
 #05-11 to #19-11  
 #05-12 to #19-12  
 #05-13 to #19-13  
 #05-14 to #19-14

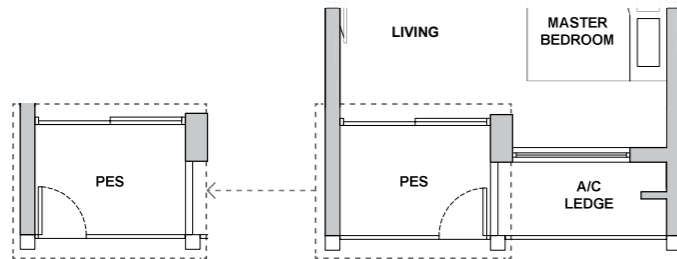


Vertical fins not applicable to  
 #12-07  
 #07-09, #10-09  
 #07-10, #10-10  
 #07-11, #10-11  
 #07-12, #10-12  
 #07-13, #10-13  
 #07-14, #10-14

## TYPE A3-G

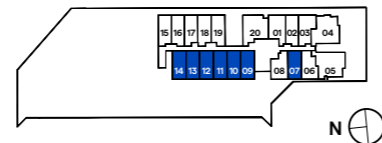
AREA 44 sqm (include 3 sqm A/C Ledge, 4 sqm PES)

UNIT(S) #04-07  
 #04-09  
 #04-10  
 #04-11  
 #04-12  
 #04-13  
 #04-14



Applicable to #04-07 only

**LEGEND**  
 W WASHER DB/ST DISTRIBUTION BOARD/STORAGE F FRIDGE A/C AIR CONDITIONER



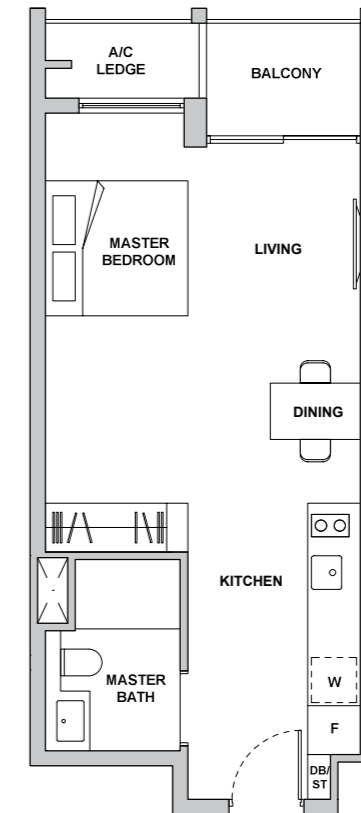
Plans are subject to change/amendments as may be required and/or approved by the Developer and/or the relevant authorities and do not form part of any offer or contract. These are not drawn to scale and are for the purpose of visual presentation only. The balcony shall not be enclosed unless with the approved balcony screen. For an illustration of the approved balcony screen, please refer to APPROVED BALCONY SCREEN DESIGN page of this brochure.

# STUDIO

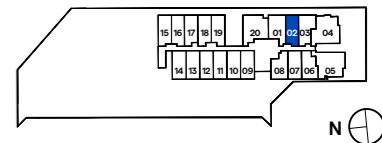
## TYPE A4

AREA 45 sqm (include 3 sqm A/C Ledge, 4 sqm Balcony)

UNIT(S) #04-02 to #20-02



**LEGEND**  
 W WASHER DB/ST DISTRIBUTION BOARD/STORAGE F FRIDGE A/C AIR CONDITIONER



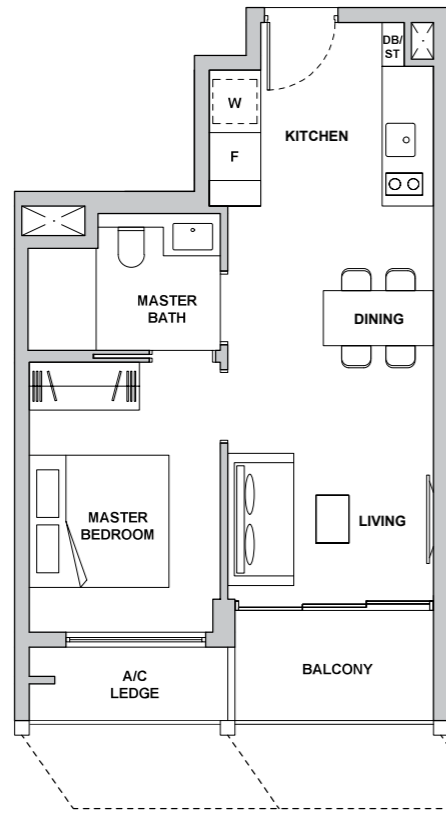
Plans are subject to change/amendments as may be required and/or approved by the Developer and/or the relevant authorities and do not form part of any offer or contract. These are not drawn to scale and are for the purpose of visual presentation only. The balcony shall not be enclosed unless with the approved balcony screen. For an illustration of the approved balcony screen, please refer to APPROVED BALCONY SCREEN DESIGN page of this brochure.

# 1-BEDROOM SUITE

## TYPE 1B1

AREA 48 sqm (include 3 sqm A/C Ledge, 5 sqm Balcony)

UNIT(S) #05-08 to #20-08

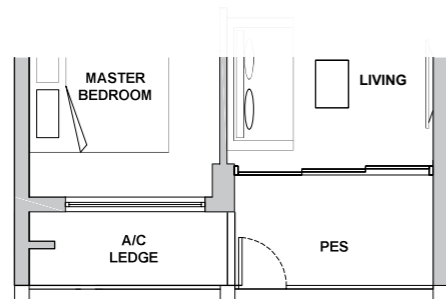


Vertical fins not applicable to #12-08

## TYPE 1B1-G

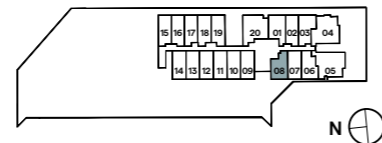
AREA 48 sqm (include 3 sqm A/C Ledge, 5 sqm PES)

UNIT(S) #04-08



**LEGEND**  
W WASHER DB/ST DISTRIBUTION BOARD/STORAGE F FRIDGE A/C AIR CONDITIONER

Plans are subject to change/amendments as may be required and/or approved by the Developer and/or the relevant authorities and do not form part of any offer or contract. These are not drawn to scale and are for the purpose of visual presentation only. The balcony shall not be enclosed unless with the approved balcony screen. For an illustration of the approved balcony screen, please refer to APPROVED BALCONY SCREEN DESIGN page of this brochure.

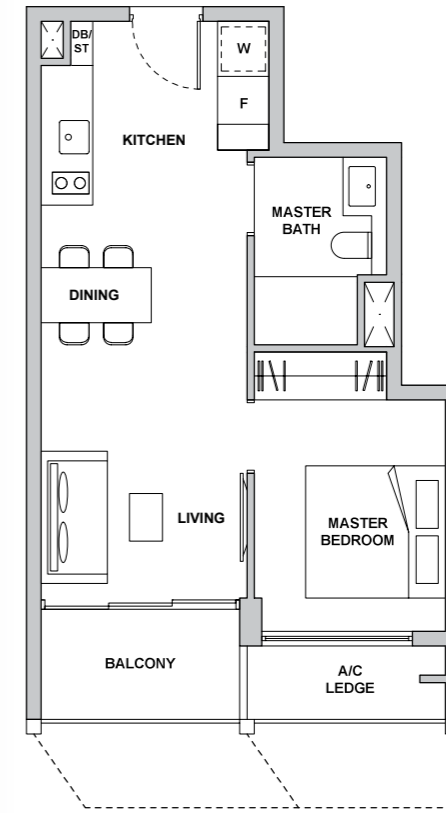


# 1-BEDROOM SUITE

## TYPE 1B2

AREA 48 sqm (include 3 sqm A/C Ledge, 5 sqm Balcony)

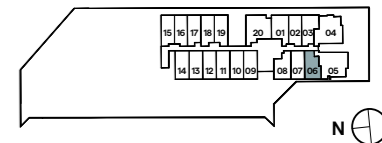
UNIT(S) #04-06 to #20-06



Vertical fins not applicable to #12-06

**LEGEND**  
W WASHER DB/ST DISTRIBUTION BOARD/STORAGE F FRIDGE A/C AIR CONDITIONER

Plans are subject to change/amendments as may be required and/or approved by the Developer and/or the relevant authorities and do not form part of any offer or contract. These are not drawn to scale and are for the purpose of visual presentation only. The balcony shall not be enclosed unless with the approved balcony screen. For an illustration of the approved balcony screen, please refer to APPROVED BALCONY SCREEN DESIGN page of this brochure.

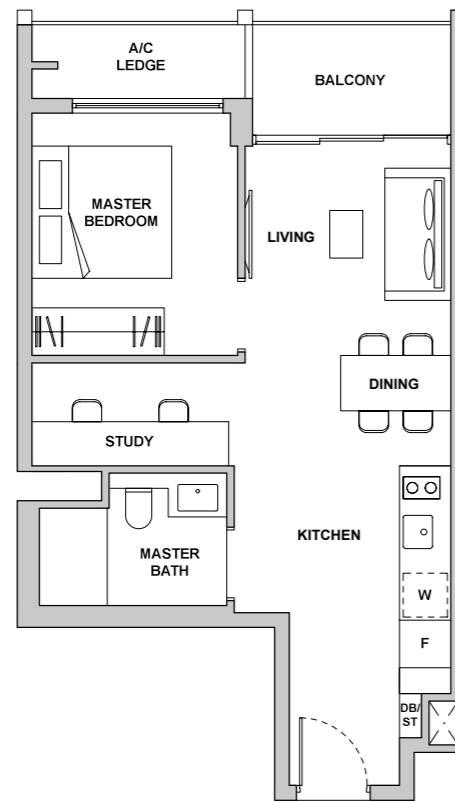


# 1-BEDROOM + STUDY

TYPE 1S1

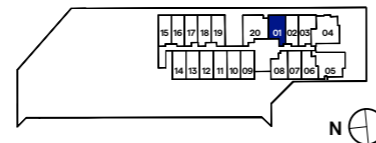
AREA 53 sqm (include 4 sqm A/C Ledge, 5 sqm Balcony)

UNIT(S) #04-01 to #20-01



**LEGEND**  
 W WASHER DB/ST DISTRIBUTION BOARD/STORAGE F FRIDGE A/C AIR CONDITIONER

Plans are subject to change/amendments as may be required and/or approved by the Developer and/or the relevant authorities and do not form part of any offer or contract. These are not drawn to scale and are for the purpose of visual presentation only. The balcony shall not be enclosed unless with the approved balcony screen. For an illustration of the approved balcony screen, please refer to APPROVED BALCONY SCREEN DESIGN page of this brochure.

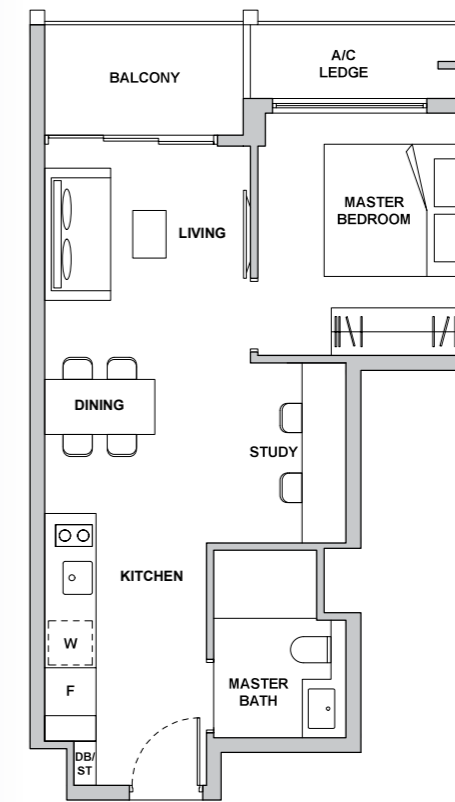


# 1-BEDROOM + STUDY

TYPE 1S2

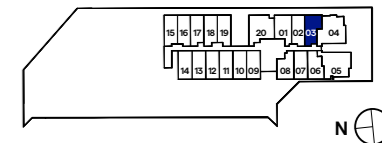
AREA 51 sqm (include 4 sqm A/C Ledge, 5 sqm Balcony)

UNIT(S) #04-03 to #20-03



**LEGEND**  
 W WASHER DB/ST DISTRIBUTION BOARD/STORAGE F FRIDGE A/C AIR CONDITIONER

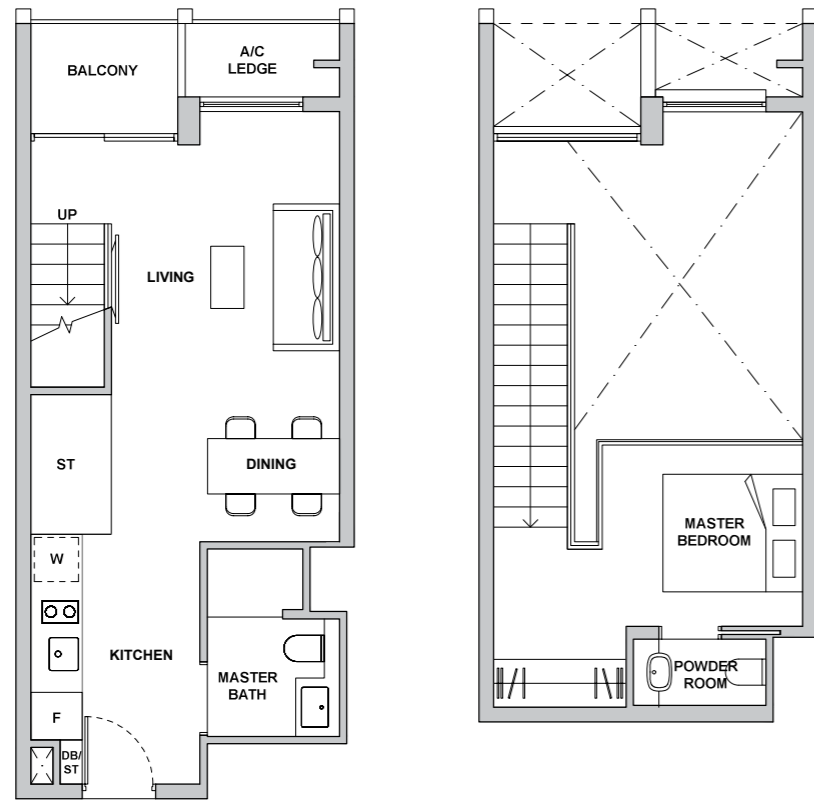
Plans are subject to change/amendments as may be required and/or approved by the Developer and/or the relevant authorities and do not form part of any offer or contract. These are not drawn to scale and are for the purpose of visual presentation only. The balcony shall not be enclosed unless with the approved balcony screen. For an illustration of the approved balcony screen, please refer to APPROVED BALCONY SCREEN DESIGN page of this brochure.



# 1-BEDROOM LOFT

TYPE BL1

AREA 79 sqm (include 2 sqm A/C Ledge, 4 sqm Balcony, 21 sqm Void)  
 UNIT(S) #19-15  
 #19-16\*



LOWER LOFT

UPPER LOFT

**LEGEND**  
 W WASHER DB/ST DISTRIBUTION BOARD/STORAGE F FRIDGE A/C AIR CONDITIONER

NOTE: \*MIRROR IMAGE

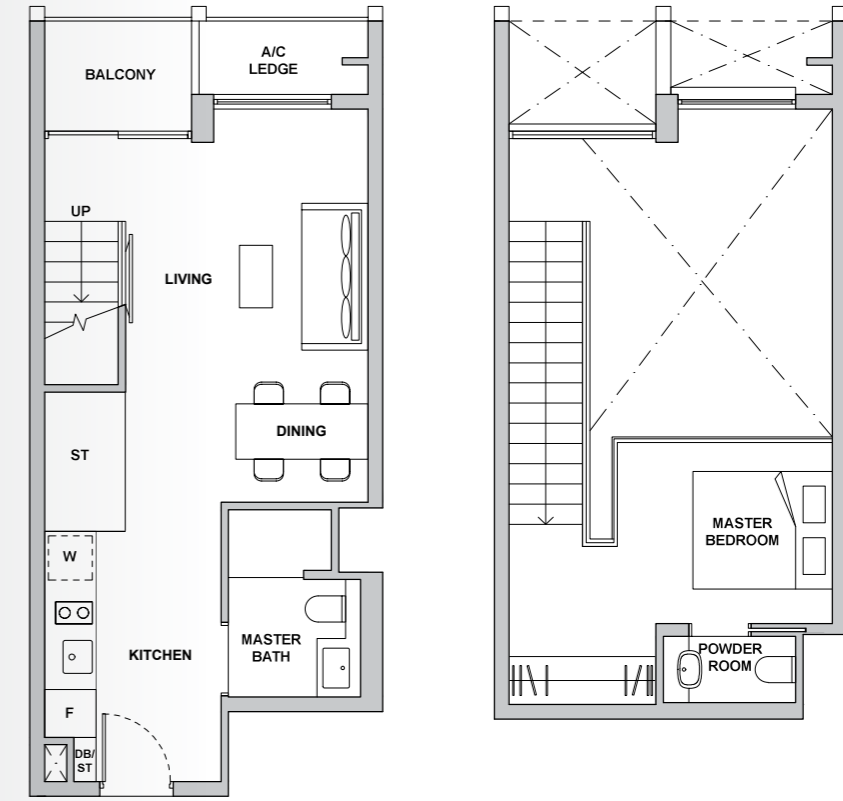
Plans are subject to change/amendments as may be required and/or approved by the Developer and/or the relevant authorities and do not form part of any offer or contract. These are not drawn to scale and are for the purpose of visual presentation only. The balcony shall not be enclosed unless with the approved balcony screen. For an illustration of the approved balcony screen, please refer to APPROVED BALCONY SCREEN DESIGN page of this brochure.



# 1-BEDROOM LOFT

TYPE BL2

AREA 82 sqm (include 3 sqm A/C Ledge, 4 sqm Balcony, 22 sqm Void)  
 UNIT(S) #19-17  
 #19-18  
 #19-19\*



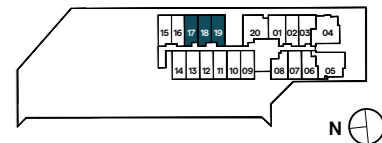
LOWER LOFT

UPPER LOFT

**LEGEND**  
 W WASHER DB/ST DISTRIBUTION BOARD/STORAGE F FRIDGE A/C AIR CONDITIONER

NOTE: \*MIRROR IMAGE

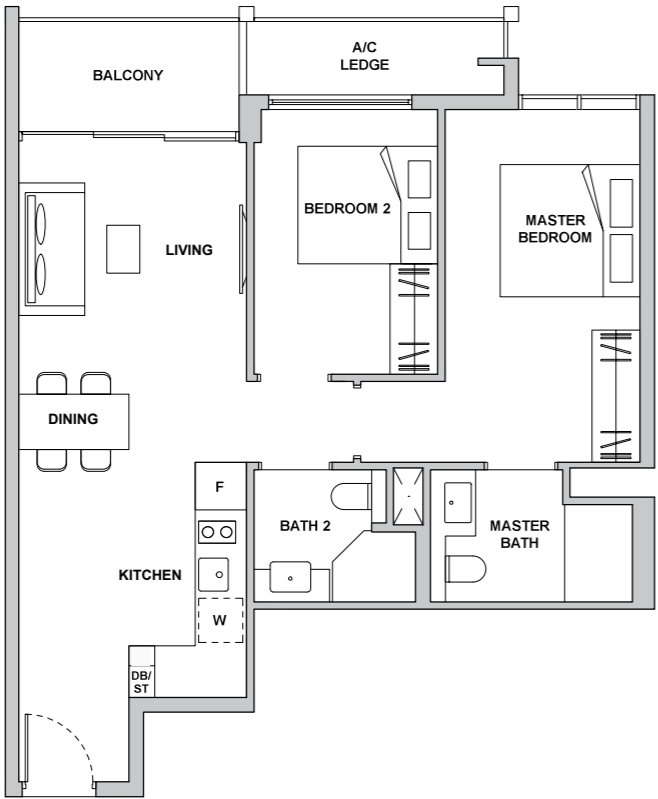
Plans are subject to change/amendments as may be required and/or approved by the Developer and/or the relevant authorities and do not form part of any offer or contract. These are not drawn to scale and are for the purpose of visual presentation only. The balcony shall not be enclosed unless with the approved balcony screen. For an illustration of the approved balcony screen, please refer to APPROVED BALCONY SCREEN DESIGN page of this brochure.



# 2-BEDROOM PREMIUM

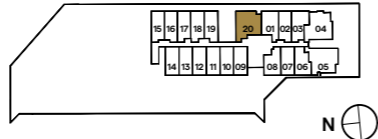
TYPE 2C1

AREA 73 sqm (include 4 sqm A/C Ledge, 5 sqm Balcony)  
 UNIT(S) #04-20 to #19-20



**LEGEND**  
 W WASHER DB/ST DISTRIBUTION BOARD/STORAGE F FRIDGE A/C AIR CONDITIONER

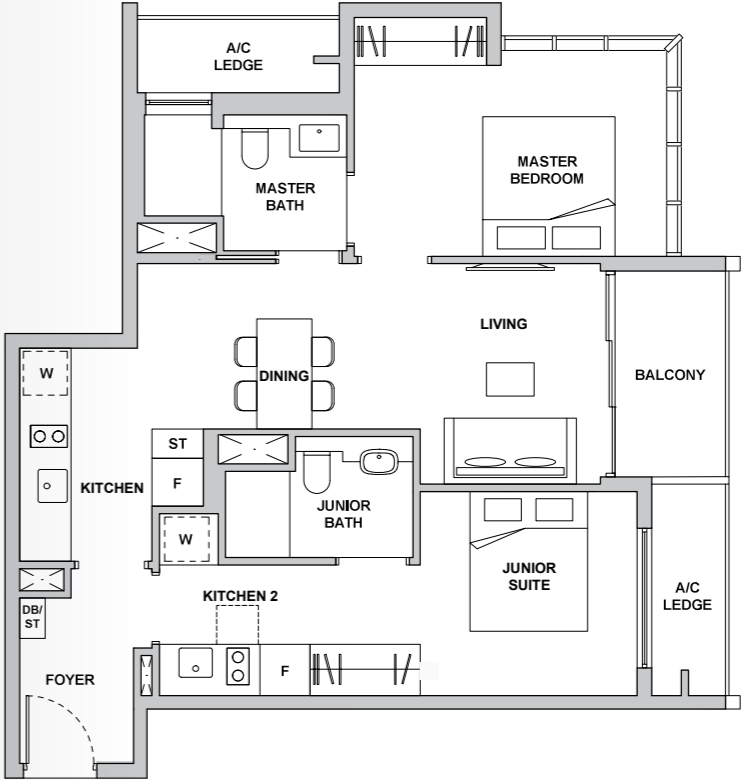
Plans are subject to change/amendments as may be required and/or approved by the Developer and/or the relevant authorities and do not form part of any offer or contract. These are not drawn to scale and are for the purpose of visual presentation only. The balcony shall not be enclosed unless with the approved balcony screen. For an illustration of the approved balcony screen, please refer to APPROVED BALCONY SCREEN DESIGN page of this brochure.



# 2-BEDROOM DUAL-KEY

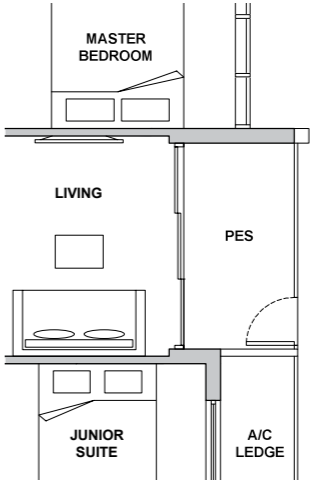
TYPE 2DK1

AREA 81 sqm (include 7 sqm A/C Ledge, 5 sqm Balcony)  
 UNIT(S) #05-04 to #20-04



TYPE 2DK1-G

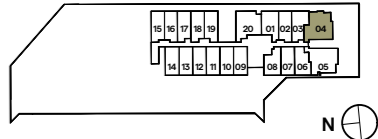
AREA 81 sqm (include 7 sqm A/C Ledge, 5 sqm PES)  
 UNIT(S) #04-04



**LEGEND**  
 W WASHER DB/ST DISTRIBUTION BOARD/STORAGE F FRIDGE A/C AIR CONDITIONER

NOTE: \*MIRROR IMAGE

Plans are subject to change/amendments as may be required and/or approved by the Developer and/or the relevant authorities and do not form part of any offer or contract. These are not drawn to scale and are for the purpose of visual presentation only. The balcony shall not be enclosed unless with the approved balcony screen. For an illustration of the approved balcony screen, please refer to APPROVED BALCONY SCREEN DESIGN page of this brochure.

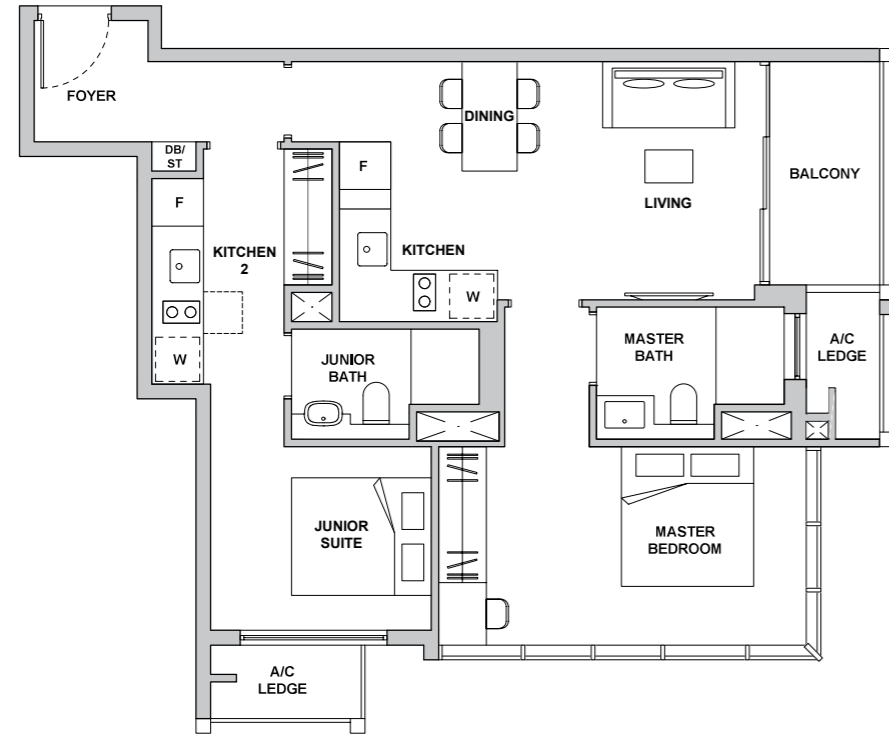


# 2-BEDROOM DUAL-KEY

## TYPE 2DK2

AREA 80 sqm (include 5 sqm A/C Ledge, 5 sqm Balcony)

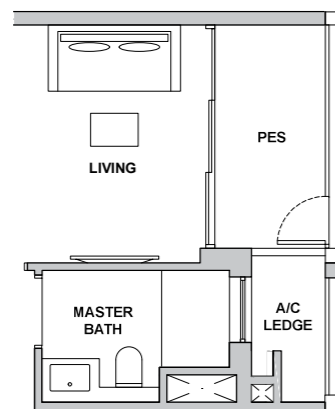
UNIT(S) #05-05 to #20-05



## TYPE 2DK2-G

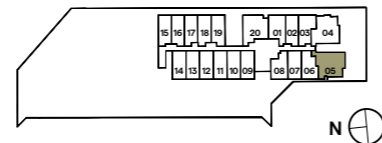
AREA 80 sqm (include 5 sqm A/C Ledge, 5 sqm PES)

UNIT(S) #04-05



LEGEND			
W	DB/ST	F	A/C
WASHER	DISTRIBUTION BOARD/STORAGE	FRIDGE	AIR CONDITIONER

Plans are subject to change/amendments as may be required and/or approved by the Developer and/or the relevant authorities and do not form part of any offer or contract. These are not drawn to scale and are for the purpose of visual presentation only. The balcony shall not be enclosed unless with the approved balcony screen. For an illustration of the approved balcony screen, please refer to APPROVED BALCONY SCREEN DESIGN page of this brochure.



# MULTIPLE SMART FEATURES FOR THE MULTI-HYPHENATES

There is no place like home. For the multi-hyphenates of tomorrow, this certainly rings true here in TMW Maxwell where homes are fitted with multiple smart features that enable and empower simultaneous live, work and play lifestyles.



### SMART HOME HUB

A centralised control hub that connects to all compatible devices seamlessly.



### DIGITAL LOCKSET

Added convenience of touchless and remote door security.



### IP CAMERA

Remote monitoring of in-house activities for extra peace of mind.



### SMART AIR CONDITIONER CONTROLS

Wireless control over air conditioning optimises comfort levels even before every arrival home.

# BRANDED FINISHING TOUCHES

A beautifully curated material palette elevates the living experience, while premium fittings and appliances exude touches of elegance.

