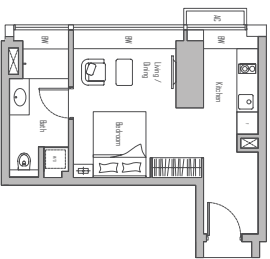
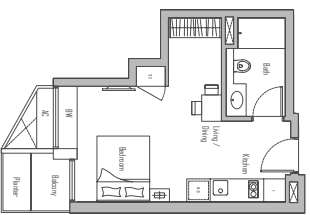
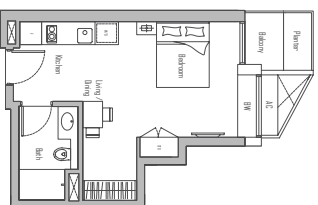


# STUDIO

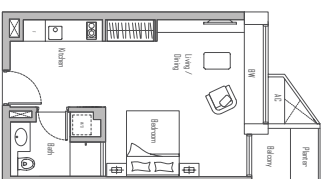


**TYPE S1**  
44 sqm / 474 sqft  
#09-14 to #25-14  
#25-14 to #33-14

**TYPE S2**  
42 sqm / 452 sqft  
#09-16 to #25-16  
#25-16 to #33-16

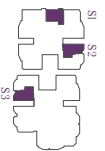


**TYPE S3**  
41 sqm / 441 sqft  
#09-21 to #25-21  
#25-21 to #33-21



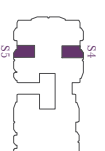
**TYPE S4**  
44 sqm / 474 sqft  
#36-11 to #51-11

**TYPE S5**  
42 sqm / 452 sqft  
#36-14 to #51-14



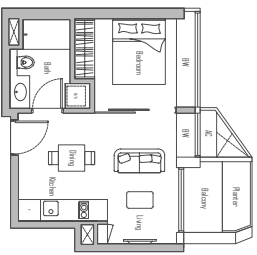
Plans are not drawn to scale and are subject to amendments as may be required or approved by the relevant authorities. All floor areas are approximate and subject to final survey.

# STUDIO



Plans are not drawn to scale and are subject to amendments as may be required or approved by the relevant authorities. All floor areas are approximate and subject to final survey.

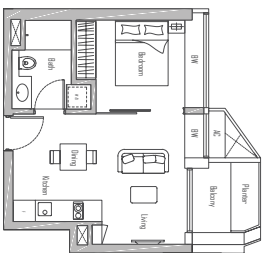
# 1 - BEDROOM



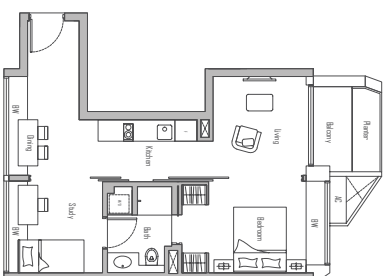
**TYPE A1**  
45 sqm / 484 sqft  
#09-17 to #23-17  
#25-17 to #33-17



**TYPE A2**  
47 sqm / 506 sqft  
#36-17 to #51-17

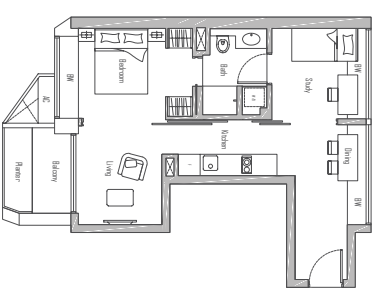


# 1 - BEDROOM + STUDY

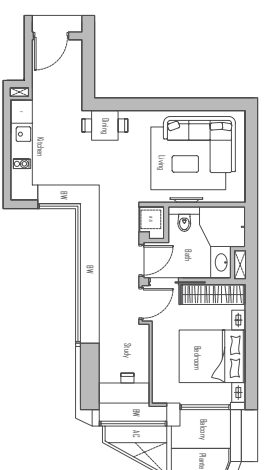


**TYPE AS1**  
67 sqm / 721 sqft  
#09-11 to #23-11  
#25-11 to #33-11

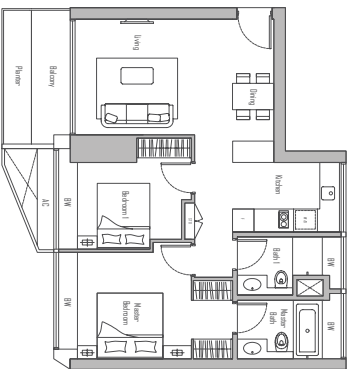
**TYPE AS2**  
64 sqm / 689 sqft  
#09-22 to #23-22  
#25-22 to #33-22



**TYPE AS3**  
69 sqm / 743 sqft  
#09-19 to #23-19  
#25-19 to #33-19

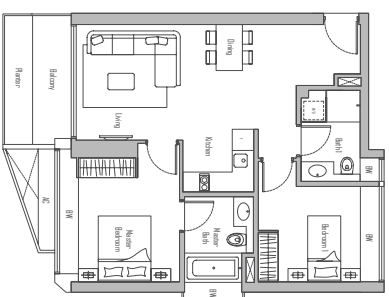


## 2 - BEDROOM



**TYPE B1**  
96 sqm / 1033 sqft  
#109-12 to #123-12  
#25-12 to #33-12

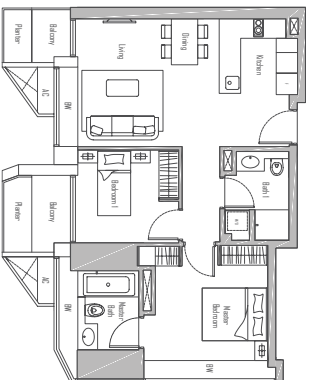
## 2 - BEDROOM



**TYPE B3**  
89 sqm / 958 sqft  
#36-13 to #51-13

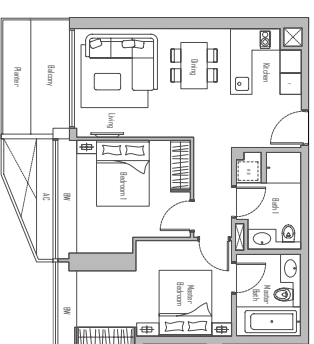
## TYPE B2

88 sqm / 947 sqft  
#109-20 to #123-20  
#25-20 to #33-20



## TYPE B4

82 sqm / 883 sqft  
#36-20 to #51-20

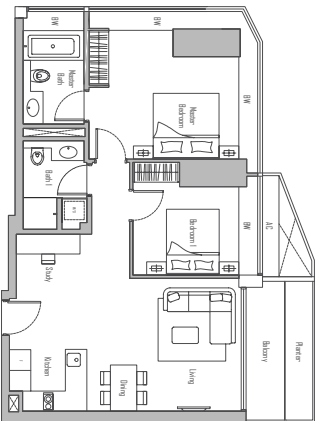


Plans are not drawn to scale and are subject to amendments as may be required or approved by the relevant authorities. All floor areas are approximate and subject to final survey.



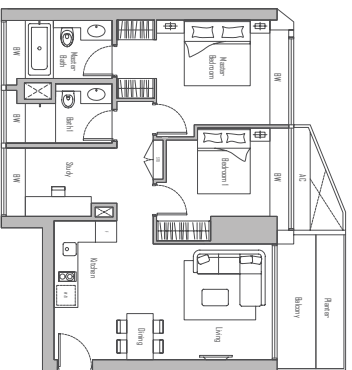
Plans are not drawn to scale and are subject to amendments as may be required or approved by the relevant authorities. All floor areas are approximate and subject to final survey.

## 2-BEDROOM + STUDY



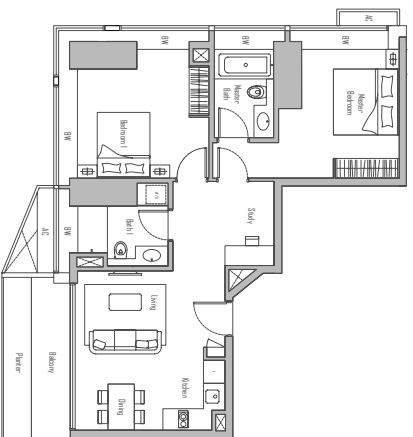
**TYPE BS1**  
102 sqm / 1098 sqft

#40-13 to #23-13  
#25-13 to #33-13



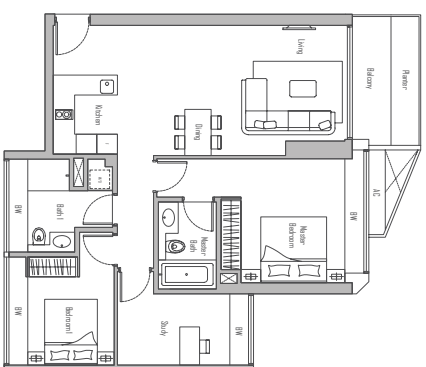
**TYPE BS2**  
107 sqm / 1152 sqft

#09-13 to #23-13  
#25-13 to #33-13



**TYPE BS3**  
98 sqm / 1055 sqft

#09-23 to #23-23  
#25-23 to #33-23

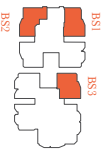


**TYPE BS4**  
112 sqm / 1206 sqft

#36-12 to #51-12

**TYPE BS5**  
113 sqm / 1216 sqft

#36-21 to #51-21



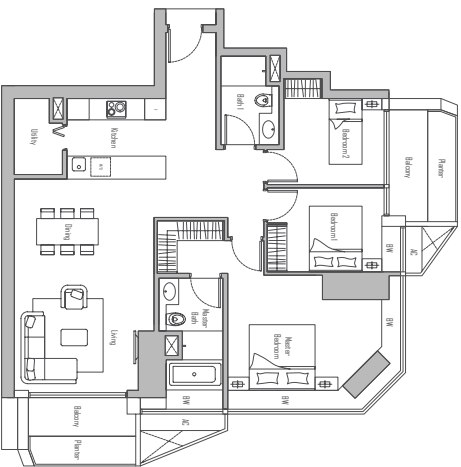
Plans are not drawn to scale and are subject to amendments as may be required or approved by the relevant authorities. All floor areas are approximate and subject to final survey.

## 2-BEDROOM + STUDY



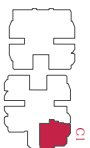
Plans are not drawn to scale and are subject to amendments as may be required or approved by the relevant authorities. All floor areas are approximate and subject to final survey.

## 3-BEDROOM



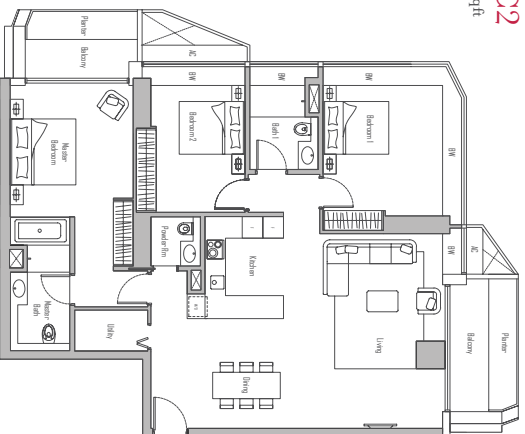
**TYPE C1**  
142 sqm / 1528 sqft

#09-18 to #23-18  
#25-18 to #33-18

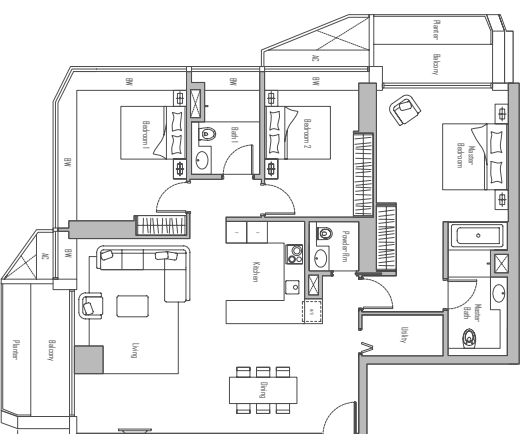


**TYPE C2**  
164 sqm / 1765 sqft

#36-16 to #51-16



## 3-BEDROOM



**TYPE C3**  
163 sqm / 1755 sqft

#36-15 to #51-15

**TYPE C4**  
141 sqm / 1518 sqft

#36-19 to #51-19

